

Candidates discuss platforms in forum

By MARTA AYN JONES
Staff Writer

As the final days of the ASMSU Presidential election approach, the candidates took advantage of yesterday's debate to reiterate their platforms.

The debate, sponsored by the Exponent, was the final formal discussion of election issues before tomorrow's election.

Both slates recounted their qualifications, involvement in ASMSU, legislative work at the capitol and experience in the business field.

"We're all qualified, up here," vice-presidential candidate Terry Hamburg said.

Diane Hill, Hamburg's presidential running mate, noted the key points of their platform.

"Both Terry and I are opposed to activity fee increases," Hill said. "We feel we can improve ASMSU without increasing fees."

The Hill/Hamburg team is also promoting a liaison system between ASMSU and the other governing bodies on campus.

The liaisons would be the voice of the other student groups to the senates, although they would have no voting power.

Hill and her opposition, Sam Korsmo, both came out in favor of getting the new Engineering and Physical Sciences Complex on the Governor's Long-Range Building Plan.

According to Korsmo and his partner, Mary Carol Mehrens, their three-point platform is based on student involvement.

"Students should have a say in how their government is set up," Mehrens declared.

The main ideas behind Korsmo's platform are the investigation of a transportation system for the university and the City of Bozeman, a permanent committee to handle student concerns and strong line of communication between ASMSU and MontPIRG.

"If the communication is not there, we (ASMSU and MontPIRG) run the risk of duplicating our lobbying efforts in Helena, which could have some detrimental effects here," Korsmo said.

"ASMSU can only lobby on higher education issues," Korsmo added. "If MontPIRG is there to handle to social issues, for example, tenant-landlord issues, we can have twice the effect."

During the debate, the candidates were given the opportunity to comment on the opposition's views.

"It's irresponsible for the executive officers to mandate for 11,000 students (not to have) the opportunity to decide whether or not they want a fee increase," said Korsmo of Hill's opposition to any fee increase.

"It's a very dangerous precedent to set," added Korsmo, "because unless you let the students decide, you're closing yourself off from them."

Hill countered by stressing the idea of bettering ASMSU's programs as they now stand.

"We want to improve what we have right now," Hill said. "With our legislative and marketing experience, we can take care of the whole scope of things."

When the floor was opened to questions from the audience, the candidates were met with a barrage of inquiries.

One spectator quizzed Korsmo on the transportation system the university had in effect in 1977.

"I'm not asking the university to do it, at least at this point," Korsmo said. "What I am asking is that someone look in to it."

Hamburg pointed out that the system that was funded eight years ago was a money loser.

"The transit system lost money," Hamburg said. "It was originally funded at \$26,809, with a projected income line of \$15,772. However, it wasn't being used, only 5.1% of that projected income actually came in. It led to a \$26,000 loss."

"That was eight years ago," Korsmo countered, "in 1977 we didn't have the parking problems that we do now, or the enrollment for that matter."

The candidates were also questioned as to why the new Engineering and Physical Sciences Complex was so high on the list of priorities.

"If you've ever been in Roberts Hall, that's clarification enough," Korsmo

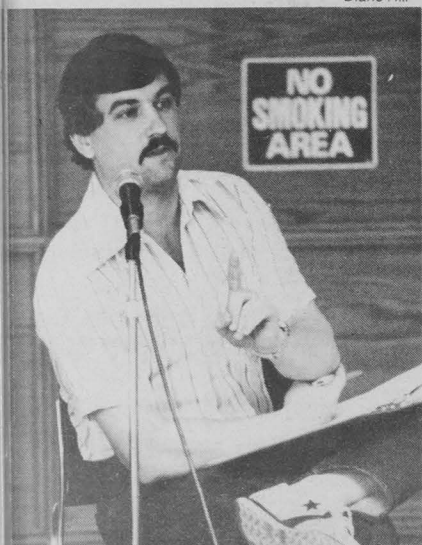
(continued on page 9)



Diane Hill



Sam Korsmo



Terry Hamburg



Mary Carol Mehrens

Support for candidates mixed

By MARTA AYN JONES
Staff Writer

There is an apparent difference of opinion among senators, program heads and members of the ASMSU administration as to whom should be the next president and vice president of ASMSU.

Eight of the 19 senators have come out in favor of Diane Hill and Terry Hamburg's pursuit for executive offices.

"I feel that Diane and Terry are the people who have the qualifications necessary to handle the executive offices in the manner they should be handled," said Senator Doug Stevenson. "I think their maturity and experience would be a valuable asset to ASMSU."

Senator Dennis Wagner said, "Diane Hill and Terry Hamburg are far and above the most qualified candi-

dates for ASMSU executive office.

"Diane has the most ASMSU experience, the best legislative background and works extremely well with others," Wagner added. "On Terry, he's mature and has the best judgement on how to market ASMSU programs."

Some of the senators said the reason their support went to Hill was due to Sam Korsmo's close ties with the highly controversial districting and MontPIRG issues.

"I guess I support Diane and Terry, basically because I oppose Sam's policies on districting," said Senator Lyle Hodgkiss. "And I'm not sure about MontPIRG. I think it's good in theory, but I think it could easily get out of hand and reflect poorly on the university."

"I support Diane and Terry, mainly I don't support

(continued on page 6)



Britons in Libya calm Thatcher's thirst for vengeance

(UPI) The London Sunday Times pointed out over the weekend that in the 19th century, gunfire from a foreign embassy that killed a London police officer might well have sent the royal navy off to war.

And, indeed, there has been thirst in Britain for vengeance for the murder of a woman officer last week outside the Libyan embassy.

But that thirst was not to be quenched, for 85-hundred excellent reasons, the 85-hundred British citizens who live in colonel Mormmar Khadafy's Libya.

No matter how much the Thatcher government wanted to bring to justice the unknown killer inside the embassy, it was boxed in by the pos-

sibility of reprisals against those thousand of potential hostages.

Surely, the grim memory of what happened to the Americans taken hostage by the fanatical Khomeini regime in Iran must have played a role in then British decision to end the embassy siege and break relations with Libya.

Since Khadafy refused to let British police enter his embassy and investigate the case, London decided to be rid of the troublesome Libyans, once and for all.

The Thatcher government is expelling all those inside the embassy, while at the same time giving them safe conduct.

Which means the killer will go free.

Although most Britons understood the government's dilemma, many are understandably angry with the decision. The always excitable British popular press screamed in fury, using expressions like "Ransom" and branding Khadafy "The God-father of International Terrorism."

But the Thatcher government felt it had no other choice. Its decision was--as one insider put it--"An in-

flating but sensible piece of realism."

There were practical factors involved, too.

Police say it would be extremely difficult to get evidence to convict the killer.

In the six days of the siege, there was time to destroy evidence, wipe off fingerprints, wash off gunpowder. It's also most unlikely any of the Libyans would testify against

another, and the gunman might well be an accredited diplomat, with immunity against prosecution under British law.

Now, the burden of decision falls on those 85-hundred Britons in Libya.

Their government has not told them to leave Khadafy's country. But it has told them to carefully consider whether it's worth the risk to stay.

'Twilight' tragedy puts Landis on trial

(UPI) A Los Angeles judge today sent film director John Landis and two associates to trial for manslaughter, raking the three men for what he called "gross negligence" leading to three deaths.

Actor Victor Morrow and two Vietnamese children died when a helicopter crashed onto them during the filming of a segment of the movie

"Twilight Zone." Municipal court judge Brian Crahan says Landis, special effects director Paul Stewart and helicopter pilot Dorcey Wingo exposed the three victims to harm because of the way they set up the fatal scene.

Landis--whose other credits include "Animal House" and "Trading Places"--commented after the

hearing that "being innocent isn't enough." His lawyer called the deaths an accident and accused prosecutors of being politically motivated.

Each defendant faces a maximum state prison sentence of six years.

Demonstration ends in 21 arrests

(UPI) Twenty-one of 300 anti-nuclear protesters were arrested for trespassing at Malstrom Air Force Base yesterday. The charge may carry a fine of \$500 and up to six months in jail. One protester had to be subdued when he resisted arrest, but the demonstration was otherwise peaceful. About 150 county, federal and military law enforcement officers were on hand.

Acid rain pollutes Yellowstone Park

(UPI) The National Wildlife Federation says acid rain is falling over Yellowstone National Park, but it adds the acidity is not as great as in the eastern United States and Canada. The federation says rain over Yellowstone has 15 times the acidity of unpolluted rain on the average. The acidity is 20 to 40 times normal in Canada and the East.

Rags to riches in Massachusetts lottery

(UPI) Talk about rags to riches, a man ordered by a judge to tear down the tarpaper shack he calls home became a millionaire today, thanks to the Massachusetts lottery.

Sixty-two year old Harold Costello of Lebanon, Maine, says he predicted Saturday night that he would wake up a millionaire. Now, with winnings of more than two-million dollars, Costello says he will, as he put it, "Live like normal people."

The retired carpenter says he'll replace the shack he's lived in for the past three years with a mobile home.

Town officials had taken Costello to court, charging the shack was run-down and built without the necessary permits. The hut also had no light or running water.

NOW INTERVIEWING ON CAMPUS

We are now accepting applications for management positions in the U.S. Navy for:

- *BUSINESS MANAGEMENT
- *NUCLEAR ENGINEERING
- *AVIATION *LAW
- *MEDICINE *INTELLIGENCE
- *CIVIL ENGINEERING
- *SHIPBOARD OPERATIONS

Applicants should be no older than 28 years old, have a BS/BA degree (technical degree preferred) or be within 18 months of graduation, be able to pass aptitude and physical examinations and qualify for security clearance. U.S. citizenship required. To make an appointment, call Navy Officer Programs toll-free:

- *IN WASHINGTON 1-800-562-4009
- *MONTANA/IDAHO 1-800-426-3626

Or sign up at the Career Placement Office for our campus visit on: April 25-27

★ THEY'RE BACK ★

Now Appearing

**The
JOHN COLTER
Band**

CAT'S PAW

April 23 - May 5

**Album on sale: MSU Bookstore, Cactus, Budget
Tapes, Musicland - Main Mall**

Department splits to help students

By **MELISSA KORBER**
Staff Writer

MSU's largest department, the Department of Electrical Engineering and Computer Science, will be split into two smaller departments by fall quarter.

The split will create two new departments: the Department of Computer Science (CS) and the Department of Electrical Engineering (EE).

The electrical and electronic engineering technology (EET) department, which is also included in MSU's largest department, will become part of the new EE department.

The current combined department has 1194 majors, according to last fall's enrollment figures.

"It's bigger than some colleges in the university system," noted Dean of Engineering Dave Gibson.

Of these 1194 majors, 471 are enrolled in CS, while EE has 581 majors, and 142 are in EET.

According to the current department head Donald Pierre, there will be few changes in the two programs, but two new department heads will be hired.

Pierre is stepping down from his administrative position to return to teaching and research.

Searches are currently underway for the two positions, said Gibson, and by summer, two new department heads will have been selected by search committees, subject to approval by the Board of Regents.

He said the cost of the split is approximately \$50,000, the yearly salary of a department head.

The split will also require additional office space for the new CS department.

Gibson points to the division as one way that administration is trying to meet engineering students' needs.

At a Regents' forum held at MSU last fall, a group of EE

students expressed concern over the size of their classes and the need for more resources in the department.

"In all areas of CS and EE, we're trying to get more resources because we've had such tremendous growth," Gibson said. "We're trying to match the workload to the growth."

He believes that the split will give students in both departments more visibility and more individual attention.

The loss of contact between faculty members may be a disadvantage, Pierre said.

However, Pierre said he thinks that the relationship between the CS and EE faculty will continue because the two departments are so closely related.

The CS and EE programs have been working out of the same office for four years. Prior to the CS and EE

'We're trying to match the workload to the growth.'

—*Dave Gibson*

merger, the CS department was part of the industrial engineering department.

In the future, the status of the two departments may improve even more, according to Gibson.

"We're looking forward to building and maintaining a strong program in CS at the undergraduate level, as well as strengthening and building the graduate program," added Gibson.

Soon, he predicts a doctorate in CS will be available at MSU.



Electrical engineering students work in a lab. (Staff photo by Dave Smith)

See Peace Corps Reps in the Student Union today through Friday

The toughest job you'll ever love

Career Days — SUB Ballroom Tues. - Wed.

Info. Booth — SUB North Lobby Thurs. - Friday 9:00 - 4:00

Free Film and Discussion

Thurs., 7:00 PM Reid Hall Rm. 105

Information, Applications, Interviews

Apply 6-9 Months Early for best Opportunities



David Webb
Jim Wick

RM. 300 LEON
JOHNSON HALL

PHONE 994-5045

PEACE CORPS

ACTIVE ELECTRONICS

Presents competent, conscientious repair and maintenance of **AUDIO EQUIPMENT.**

We repair stereos, amplifiers, synthesizers, recording equipment & sound reinforcement gear.

Call Clarence or Kelly at

ACTIVE ELECTRONICS

13 S. TRACY
587-9029

Present Student I.D. for **10% DISCOUNT**

The Best Little Hair House In Town

8-5 Mon-Sat
Evenings by Appt.

SHEAR WEST
Hair Salon

12610 West Main
Bozeman, Montana 59715
(406) 586-7385

Diana Thomas, Kastine Cameron & Wanda Miller would like to invite you to visit their new Hair Salon.

Across from the Town Pump
on West main 586-7385

Grand Opening Specials

Hair Texturizing	2.00 OFF
Hair Cuts	1.00 OFF
Highlighting	1.00 OFF

with this coupon - expires May 1



Executive candidates endorsed

With ASMSU's spring election at hand tomorrow, the following is the Exponent editorial board's endorsement for a major decision to be made on the ballot Wednesday.

In the evaluation of the candidates for executive offices, the board examined their past experience in student government, legislative experience at the state level, and the potential to more effectively represent ASMSU across-the-board.

For the office of ASMSU President and Vice President, it was the consensus of the board to endorse the candidacy of Sam Korsmoe and Mary Carol Mehrens.

Korsmoe and Mehrens are candidates who are experienced, informed, energetic, open-minded, and willing to explore new ideas and issues.

Their legislative experience is far superior to that of their opponents, Diane Hill and Terry Hamburg. Although neither Korsmoe or Mehrens lobbied during the last session, both spent the entire winter quarter in Helena with internships — time spent at the capital, working and observing the inner workings of the legislative process.

Hill and Hamburg, on the other hand, have legislative experience that is limited to one brief visit to Helena during the session (Hamburg) and a summer internship with the governor's office during a time when interaction with state government and legislators is at an absolute minimum (Hill).

Korsmoe and Mehrens are also candidates that are willing to take a stand on and adamantly support issues that are often seen as touchy or taboo areas for executive candidates (i.e. districting, MontPIRG, examining the feasibility of a transportation system, or a possible activity fee increase). They are willing to explore new ground and make the most of its possibilities and potential for the students.

Korsmoe and Mehrens are willing to take a good, hard stance on an issue that they feel is in the best interests of the students. This attribute is essential in Helena, where legislators will not take wishy-washy, please-all stands on issues from lobbyists. Legislators want to know where lobbyists stand on an issue, not how well lobbyists can please all colors of the spectrum.

Hill and Hamburg, in yesterday's presidential forum, often took a round-a-bout approach towards answering questions of controversial nature.

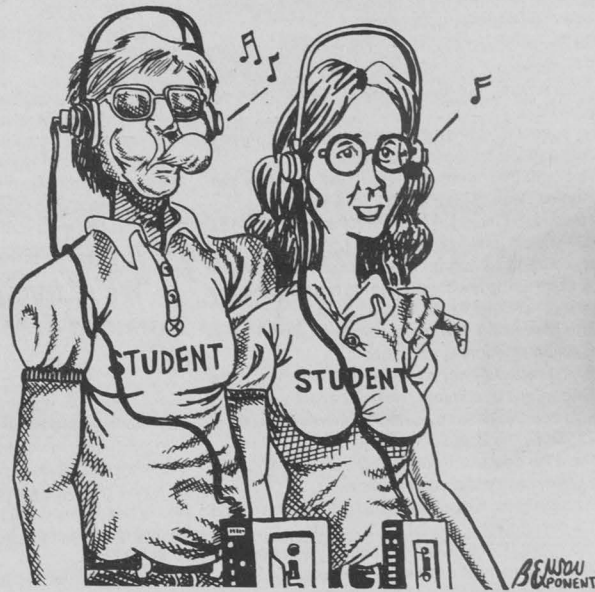
When they did take a hard stand, it often was a stand that ruled out possibilities and potentials, such as their strong stand against any fee increase (no matter how small) or even looking into issues they don't immediately see as profitable or popular.

Most importantly, Korsmoe and Mehrens are informed about issues they support and speak on. At the forum, it was apparent to those informed about ASMSU that Hill and Hamburg were often uninformed about issues they responded to. Because of their failure to effectively research issues they were forced to skirt certain issues. Additionally, information provided by Hill and Hamburg on several issues was cited by present ASMSU executive officers as being inaccurate and distorted.

The editorial board of the Exponent endorses the candidacy of Sam Korsmoe and Mary Carol Mehrens for ASMSU President and Vice-President in tomorrow's student elections. We urge you to do the same.

—Editorial Board

WHEN ANY CAMPUS POLITICIAN TALKS...



VIEWS

By **MIKE STOECKIG**
ASMSU President

As you're no doubt aware, tomorrow is election day here at MSU. Students will get a chance to vote for 12 Senators, an initiative on districting the Senate, and last, and but not least, the new ASMSU President and Vice President.

After long and careful consideration, I have decided to endorse the team of Sam Korsmoe and Mary Carol Mehrens for the executive offices of ASMSU. I do so for the following reasons:

1) Legislative experience. Both Sam and Mary Carol spent all of winter quarter 1983 at the legislature. Mary Carol worked for two of the state Senators and Sam interned with the Montana Television News organization. The combination of their experience is far more extensive than we as students could have hoped for, and given the stakes for the upcoming session (continued funding of work-study, garnering more state funds for computers on campus, the Engineering/Physical Sciences complex, etc.), it will not only come in handy, it will be essential.

Views columns can be reserved by contacting Exponent News Editor at the Exponent office. Any Views column must be typewritten and double-spaced. Preference will be given to columns written about on-campus issues. The Exponent reserves the right to edit for libel and length.

2) Transportation. Sam spent last summer working on an evaluation of a senior citizens' mass transit system and is campaigning on the establishment of an ASMSU/Bozeman bus system that would go all over the city and bring students to campus. If there is any way to bring such a system to fruition, I have every confidence that Sam Korsmoe and Mary Carol Mehrens can find it.

3) ASMSU Experience. Mary Carol has been actively involved in student government since 1981—a record unequalled by any individual seeking office this year—as a member of the Lectures Committee, a Senate candidate, and as a Senator. Sam has been involved in

ASMSU for approximately the same length of time as his opponent for the office of President, first as a student member of the State Legislative Committee and the Associated Student Legal Aid Committee, then since early last fall, as a Senator. Between them, Sam Korsmoe and Mary Carol Mehrens have more than four years of active participation within ASMSU's committees and government—quite a record!

I have a great deal of confidence in and respect for these two individuals. Please remember to vote tomorrow, and I urge you to vote for the most experienced, progressive team running: Sam Korsmoe and Mary Carol Mehrens.



Editor
Curt Pritchard

Managing Editor
James Pritchard

News Editor
Karin Olson

Sports Editor
Phil Ward

A & E Coordinator
Andy Roessgen

O & A Coordinator
John Ward

Photographers
Tom Lowe
Dave Smith

Graphics
Tim Benson

Typesetters
Kerry Austin
Chris Cott

Secretaries
Nanette Malletta
Mark Rensel

PMT Operator
Julie Mayara

Business Manager
Robert Schunk

Assistant Business Manager
Kara Jo Ketterling

Advertising Sales
Connie Flynn
Tammy Libby
Ben Scallan

Advertising Layout Manager
Helen Miles

Advertising Layout
Kelly Asbridge
Dan Mehan
Linda Meyer
Erik Schneider
Jill Wing

Copy Layout Manager
Barb Fredericksen

Copy Layout
Katherine Friedrich

Secretaries
Sally Frey
Dee Shipstead

Exponent
Office 994-2611



The Exponent (ISSN #362060) is an independent student-written and student-managed newspaper and was established January 1, 1910, at Montana State University, Bozeman, Montana, as a continuation of the Monthly Exponent, established January 1, 1885.

The opinions expressed herein are not necessarily those of the university or the student body.

The Exponent is published twice weekly during the school year except on holidays and during finals weeks by the Associated Students of Montana State University.

The Exponent is printed by the Bozeman Daily Chronicle in Bozeman, Montana.

Known office of publication is Room 312, Student Union Building, Montana State University, Bozeman, Montana 59717.

Second class postage paid at Bozeman, Montana. Subscription by mail per year is \$15. POSTMASTER: Send address changes to The Exponent, Rm. 330 SUB, MSU, Bozeman, MT 59717.

The Exponent is a member of the Montana Press Association and the Rocky Mountain Collegiate Press Association.

LETTERS



Be prepared

To the Editor:
I really enjoyed reading the last issue of our Exponent. I think it is healthy for the student body to debate issues especially if our student leaders would take the time to research the issues so we could have a factual debate. I have spent five months debating MontPIRG in my own mind. Being a farmer and a student in Agronomy, I wanted to be sure that MontPIRG would work for my best interest. I have talked to student leaders from the Uni-

versity of Montana to find out the status of MontPIRG on their campus. Asking questions like: Have you heard complaints about the funding system? Are their any complaints about MontPIRG working on the wrong issues? What are some of the issues MontPIRG has worked on and what do they plan to do in the future?

After talking with these student leaders and finding all positive feedback including the fact that MontPIRG thoroughly researching each issue before they actively support a bill or address a problem. MontPIRG has proven it's worthiness by developing workable solutions

for several problems in Missoula as well as Montana.

Remember this group is the student's group. Together students decide the direction MontPIRG will go. Fortunately, the organizers have the farsightedness to see that this group could never work on these issues with donations or income from bake sales. They have developed a waivable/refundable fee, and I think it is an insult to the Montana Bar Association to have students trying to interpret the law. The Board of Regents Legal Attorney has found no problem with MontPIRG's funding system. Again, it displays

the inexcusable ignorance of some of our student leaders when they compare the non-waivable system of New Jersey's PIRG with Montana's waivable system!

Seeing the concerns of our student leaders who oppose MontPIRG and knowing they have no basis, makes me question their leadership. Are these leaders really concerned for the student's interests or are they worried that they are losing their power over the student body.

I have carefully chosen to support MontPIRG after months of research and I challenge the rest of the students who wish to debate this issue to do the same. I ask the student body to not allow yourself to be persuaded blindly into supporting or not supporting MontPIRG. I also ask that before you actively support or attack MontPIRG to be prepared to support your stance with facts gathered from research, not hearsay from rumor!!

Walter Schweitzer

checks and balances built into them.
In addition to being a much needed service on this campus, MontPIRG is clearly serious about being accountable to students and deserves our support.

Mary McMahon

Lock your doors

To the Editor:

Lock your doors!! Hide the children! There's a conspiracy afoot right here in Bozeman! Thanks to the vigilance of Dennis Henry we have all been warned in time. Joe McCarthy would be proud.

Supposedly, MontPIRG is going to be creating all sorts of nasty, unethical "spin-off and front groups" to do its dirty work. Since we have not been told the identities of these "groups," perhaps Mr. Henry should form his own group to keep us informed on the subject. Potential names for such a group are limitless. How about CRAP (Contrived Rhetoric Against PIRG) or PSYCHO (Paranoid Students Yearning to Choke Opportunity) or SAD (Students Against Democracy) or ACHEW (Archaic Committee to Hunt and Eliminate Witches)?

People like Dennis Henry with his wild accusations indicate all the more how much good MontPIRG can do.

Dale Tischmak

Wishy-washy

To the Editor:

This is an open letter to Alice Smith and Mary Jones in reference to their criticism of the policies of the Film and Television department.

Wishy-washy people use fictional names. If you have a complaint take the initiative and meet with those who make the policy decisions; do something constructive. The Visual Communications Association, a film and television and photography student organization, was established for this purpose. Go through the channels; don't just nag and bitch in the dark. Be realistic, the television department is not imperialistic, the three media work together, they need each other.

Norman Tveit

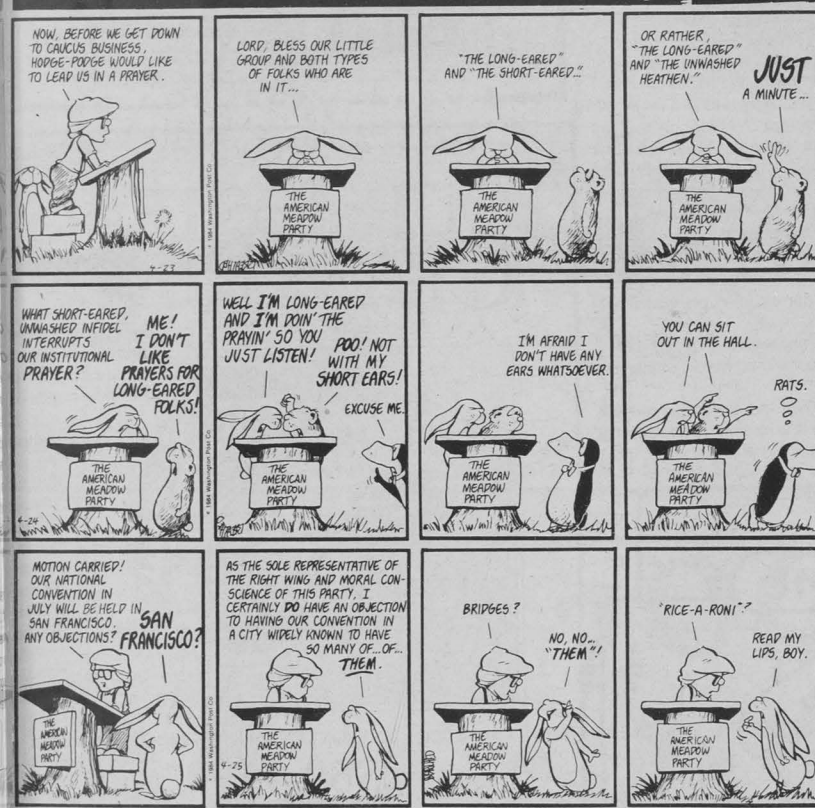
Accountable

To the Editor:

I'm having a hard time understanding some of these worries about the new student group MontPIRG. If you look at their structure and funding system, they have more accountability and responsiveness to the student body built into their organization than any other on campus. These features - surveying the student body for projects, an elected board to decide projects, an optional fee that requires majority support to be started and maintained - these will force MontPIRG to be very conscious about their standing with the average student. MontPIRG's lifeblood will be student support; it will have to work hard to actively maintain it and it would be financial suicide to do anything that might jeopardize it. I wish other campus programs and services had the same

(continued on page 10)

Letters to the editor must be typewritten and double-spaced. Preference will be given to letters under 300 words in length. Longer letters will be published when space permits. Letters must be signed and presented with positive proof of identification. The Exponent reserves the right to edit for libel and length.





The Original JOHN'S PORK CHOP SANDWICH



Pork-Out Special

Double Porkchop Sandwich & Fries

\$3.00

209 E. Main
Next to Rockin R Bar

Mon.—Thurs. 11 a.m.—9 p.m.
Fri. & Sat 11 a.m.—11 p.m.

TypeCraft

Professional Typing & Advertising Design

Resumes, Reports, Thesis, Posters, Flyers, Newsletters

We can help you make a good impression with your Resume, get your report in on time, or present your best promotional piece.

Low-Cost, Personal Service — Prepared Quickly!

24 South Willson 586-1146

Lighting survey reveals concerns

By **MELISSA KORBER**
Staff Writer

Gatton parking lot may be the most dangerous place on campus, according to the ASMSU Lighting and Phone Survey.

The final results of the survey are in, and Gatton parking lot has been identified by more students than any other area on campus as needing more lighting for safety and convenience.

Other spots which students felt would benefit from increased lighting (in the order of their priority) are: the area behind Traphagen and Reid Hall, the Bobcat Lair-Danforth Chapel area, the area surrounding Romney Gym, the construction site near Lewis Hall, the Hamilton Hall parking lot, and an area on Cleveland Street by Lewis and Clark Field.

Also mentioned by students as needing more lighting were nearly all on-campus parking lots, and a large area west of 12th Avenue near married student housing.

The survey also indicated that most students would be willing to pay for the additional lighting.

Fifty-seven percent of those surveyed said they sup-

ported a parking fee increase of \$2 to put in more lighting. Porsche Everson, chairman of the ASMSU Lighting Committee, said she was surprised, but pleased, that so many students supported a fee increase to improve campus lighting.

Over 1% of MSU's student body, 178 students, completed the survey.

Of these, 65% supported the installation of an outdoor pay phone on campus.

Twenty-seven percent drove to campus, but 65% said they would use public transportation if it were available.

Only 7% have ever used the Fang's escort service in the library, but 23% said they were planning to use it in the future.

Everson notes that since approximately half of those surveyed were male, this statistic is encouraging.

"Lighting is a problem that concerns everyone, regardless of sex," she added.

Everson said that the committee will now make recommendations to the MSU Facilities Planning Board on which areas should be high priority for improvements in lighting.

Support for candidates expressed

(continued from page 1)

districting and MontPIRG," Senator Craig Ellis stated.

Stephanie Phillips, one of the three senators who is endorsing Korsmoe, stated, "I support Sam. I think he has a real good head on his shoulders. He's not afraid to make a decision. He thinks before he talks, always!

"I don't agree with all of his policies, but when it comes down to it, I know he will make the right decision," Phillips said. "He is very realistic. He doesn't say he's against a fee increase entirely. By saying you're totally opposed to a fee increase, it is like putting your foot in your mouth.

Senator Porsche Everson, who included herself among Korsmoe's supporters, said, "I am supporting Sam and Mary Carol because I feel they offer ASMSU positive action and a definite potential for growth.

"I appreciate them going to the students and asking their opinions on the issues. I also appreciate the way they have worked with other student groups," Everson said.

The rest of the senators were either unavailable for comment or did not wish to make public their support.

Some of the strongest Korsmoe/Mehrens support comes from the current executive staff, both ASMSU President Mike Stoeckig and ASMSU Business Manager

Kevin Donegan came out in favor of Korsmoe.

"I think one of the main reasons I support Sam over Diane is I know he can stand outside of an issue and look at all sides of it," Donegan stated.

"One of the biggest problems I have with Diane and Terry's philosophy is, and I quote 'We intend to closely monitor the expenditures of student fees and will do our best to administer the program of ASMSU consistent with student opinion'," said Donegan. "That is what the business manager is there for, to facilitate budgeting and monitor spending. With the upcoming legislative session, there is no way they will have time to do all that. That's what they hire a business manager for.

"They just don't know what their job descriptions are," Donegan added.

Hill's executive level support came from Vice President Lori Takala.

"I'm supporting Diane. I believe in her beliefs. I think they began in the right direction and have continued in that vein," Takala said.

"I think they are both the type that are concerned with the student's opinion and will work very hard to do what the students want, be it districting or anything like that," added Takala.

DOMINO'S PIZZA DELIVERS™ FREE.



CALL US
Bozeman
586-5431
© 2020 West Babcock

Domino's Pizza® will deliver your pizza to your door in 30 minutes or less—and delivery is only free.

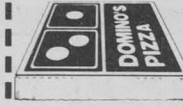
Hours:
4:30 pm-1 am Sun.-Thurs.
4:30 pm-2 am Fri. & Sat.

Our drivers carry less than \$20 in cash.

TERRIFIC TUESDAY

Treat yourself to a 16" custom-made pepperoni Domino's Pizza® and two Cokes® for only \$7.00.

Limited Delivery Area. Good at listed locations only. One coupon per pizza. Good Tuesday Only.



Name _____

Address _____

YOUR JOSTENS CLASS RING



YOUR CHOICE OF ANY JOSTENS WHITE LUSTRIUM RING
\$69.95

See Your Jostens Representative About Jostens Easy Payment Plans
4-23 to 4-27 7:45-5:15

Date _____ Time _____
MSU Bookstore, Inc.

Place



Jostens is the Official Awards Supplier of the 1984 Olympic Games

HOME SWEET HOME

Family Enrichment Center

HOME VIDEO

Rent A VCR
and
Two Movies
Anytime

\$10.00

MAIN MALL

586-1983

2825 W MAIN - BZN

Planning board considers expanding campus parking

By ED McLAUGHLIN
Staff Writer

A "major thrust" of the Facilities Planning Board on campus will be to look into the possibility of paving the parking lot south of the Brick Breeden Fieldhouse, according to Eric Raecke of MSU Facilities Planning.

Raecke said paving this section of the lot has been suggested to the Facilities Planning Board, a group comprised of faculty members, student representatives, and professional people in the community. This group votes on suggestions pertaining to parking on campus. If a suggestion is approved, funds are allocated for the project.

"We're presently trying to get an analysis of registrations of vehicles for the past year," Raecke continued. This will be done by analyzing the numbers and areas to which the most vehicles are registered by the Traffic and Security Division each quarter.

He said this data will provide the information needed to determine which areas, i.e. student, faculty, and motorcycle parking, need new parking space and repair.

A change in parking on campus will take place when the new greenhouse is built near Cheever Hall. According to Raecke, this construction will "eat-up the Cheever Hall parking lot and replacement parking will be needed."

He said another site for parking is being considered. "Parking will be replaced on a stall by stall basis," he added.

According to Raecke, Facilities

Planning works to "identify where we're short of parking and concentrate our money in these problem areas."

One "problem area" he cited was the parking problem faced by the residents of two all-female residence halls on campus: Hapner and Hannon. Raecke noted that these areas have never had their own parking lots. As a result, the women sometimes must park their vehicles several blocks away. Raecke is concerned that one of the women might be attacked while walking home at night after being forced to park "far away" from her hall.

"They (the women) would like to have a parking lot and we're looking into it," he added.

Raecke said Facilities Planning is also trying to determine "whether or not we're short on motorcycle parking." He noted that a "large number" of students ride motorcycles and Facilities Planning is "doing our best to accommodate them."

Film shown

A film about anorexia and bulimia will be shown Wednesday, April 25, at 7 p.m. in 276 Strand Union Building at MSU.

The 28-minute film, "I Don't Have to Hide," is sponsored by the MSU Student Health Service and Counseling Center.

Susan Adams, a nutritionist from the Health Service, and Susan Sindelar, a counselor from the Counseling Center, will lead a discussion following the film. There will be a charge of \$1.50.



The Facilities Planning Board is looking into the possibility of paving the rest of South Fieldhouse Parking Lot. (Staff photo by Dave Smith)

Free Cup of Coffee
with any dessert purchase

4/23 -
4/30

this week's feature coffee: **Vienna**



A blend of select Central American coffees specially roasted to the distinctive flavor of the famous coffee houses of Europe. In Vienna this full roast coffee is often topped with whipped cream and served as a festive dessert beverage.



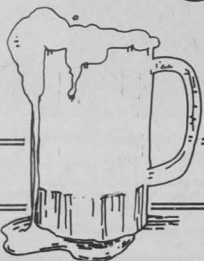
avogadros number 994-6023

The New **ZOO** THURSDAY

Mug Nite

starts at eight

25¢



The Pickle Barrel



WE DELIVER FREE!
587-2411

Bring this coupon to

The Body Shoppe

get a FREE brush or comb - \$2.50 value with purchase of \$15.00 or more

2 West Main 586-4446
Hair Cuts by
Toni & Dorothy
\$8.00

HUEY!



Photos by Dave Smith

ASMSU Concerts thanks the students who made the Huey Lewis concert such a great success.

Made possible by your student activity fee.

ASMSU CONCERTS

brought to you by...

Our reputation brings you in...

Your Satisfaction brings you back!

where speed & quality count

When you need printing NOW see us! we say...YES WE CAN!

insty-prints

The WIZ of the printing BIZ!

★ Envelopes ★ Letterheads ★ Invoices ★ Business Cards ★ Full Service Layout/Typesetting

29 S. Tracy Ave. 586-7007

University Square 587-5496

Candidates state issues in election forum

(continued from page 1)

said in reference to the condition of the building.

"Most of the equipment is outdated," Hill added, "It's very old and hasn't been updated since the building was built in 1955."

"MSU has a reputation as one of the best engineering schools in the U.S. The facility should reflect that,"

Mehrens said.

The final question fielded by the panel was their stance on across the board increases for all stipended ASMSU employees.

"Right now, I feel the stipends are fair," Hill said. "I feel real good about the way we (the Stipend Review Board and the ASMSU Program Heads) were able to work together and come to a reasonable solution," added Hill.

"I was one of the few people on the stipend review that fought like hell to get the stipends where they are now," Korsmoie said.

"I felt it was wrong, very very wrong that ASMSU was so discriminatory," Korsmoie added. Unless you are getting a lot of aid, or your parents are putting you through school, or are independantly wealthy you can't afford to work in ASMSU.

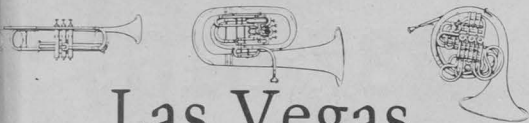
"It was a Catch-22 situation, the stipends needed to be increased but the fee increase failed, most of the time the votes were coming out 5-1 against with my being the only vote in favor of the increases," Korsmoie said.

CLASSIFIEDS
Students 5¢/word
Non-Students 10¢/word

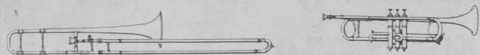
ASMSU

brought to you by...CAMPUS ENTERTAINMENT

ASMSU Performing Arts Committee proudly presents:



Las Vegas Brass Quintet



Tuesday, April 24, 1984
8:00 PM

Reynolds Recital Hall

Ticket Prices:

Students (all) \$3.00

Non-Students \$5.00

For further information please contact

Campus Entertainment/
Performing Arts
at 994-3591.

ASMSU

Films Presents



Film Festival

The Pink Panther Strikes Again

Tomorrow night at 7 and 9:30
in 339 Leon Johnson

Admission is \$1 for MSU Students \$2 for others

Showing this Weekend

Friday

URGH! A Music War

Saturday

Tess

Sponsored by ASMSU

Proudly Welcomes

Western Printmaker

John Pollock; lithographs

April 16-27

in cooperation with MSU School of Art's 7th Print Symposium

EXIT GALLERY

MontPIRG clarifies issues and intentions in letters to editor

(continued from page 5)

Center. A MSU student, Jo Ann Peterson, is now signing people up to become deputy registrars and will be coordinating registration drives with other interested parties.

This is one more reason why I support MontPIRG. Students are showing that they are serious about becoming involved in their community and they are taking some active steps. Support MontPIRG at MSU.

Julie DalSoglio

Thanks

To the Students:

We would like to thank you for your support in last Wednesday's election in our bid for ASMSU President and Vice President.

In particular, we greatly appreciate the energy and enthusiasm of people, too numerous to mention, who have put their time and talent into our campaign during the past two weeks. Their encouragement has made this whole experience worthwhile.

Again, we ask you take a serious look at the candidates and the issues and determine what you want for ASMSU. Be sure to vote tomorrow! Thanks again.

Sam Korsmoe
Mary Carol Mehrens

Henry In error

To the Editor:

I would like to point out an error that appeared in Dennis Henry's Views column of April 17th.

Mr. Henry expressed fears concerning a Western PIRG that would funnel Montana money and Montana energy out of the state. He asserted that such a Western PIRG is in the works and quoted me to support his assertion. For the record, I adamantly deny making any such statement of that kind. Furthermore, the idea that MontPIRG would ever relinquish its autonomy to any group is absurd.

In fact, one of the aspects of MontPIRG that attracted me to the organizing effort was the total autonomy involved. Occasionally, two or more PIRGs will convene

a conference to discuss common concerns (i.e. voter registration, bottle bills), but never do they combine funds or resources for regional or national projects.

To me, that's the real beauty of MontPIRG, MONTANA students organizing so that they, as citizens of MONTANA, can have input into MONTANA concerns.

Would you like to see an organization made up of Montanans for the benefit of Montanans? If so, I urge you to get the facts, then read and sign the MontPIRG petition.

Mike Brand

Needs a chance

To the Editor:

I'm surprised to see that the focus of the MontPIRG discussion has been on the mechanics of a \$2.00 fee. Actually, the fee issue is not all that significant; you don't have to pay it if you don't want to; the fee is not all that large, and the right of students to democratically determine their own fees is unquestioned — we just got done with a vote on a \$5.00 fee increase. What we really should be considering is whether students are going to get a "good buy" for their \$2.00.

If the activities of MontPIRG at the University of Montana offers any indication, that \$2.00 fee may be one of the best buys on campus. There, MontPIRG has dealt with a number of issues of considerable importance to the students and it is working on more.

For example, MontPIRG has been very active in dealing with housing problems. They have provided a "model" lease document and a comprehensive guide to landlord-tenant relations; they have helped establish a "hot line" so the students can call attention to problems and get help quickly. MontPIRG has also been working on a guide to Small Claims court, where many landlord-tenant disputes are resolved. But housing is only one issue; MontPIRG is also continually producing surveys comparing prices and services at Missoula banks, laundromats, eyewear dealer, and other businesses. These are all topics that are chosen by students at UM as being impor-

tant to them and are dealt with by MontPIRG.

On the state level, MontPIRG is instrumental in passing the "Lemon Law" that now protects car buyers. MontPIRG has also been very active in opposing proposed Montana Power rate hikes, requested by MPC to pay for Colstrip 3. In fact, MontPIRG has been working on the establishment of a Citizen's Utility Board, so that average citizens can deal with the utilities on a somewhat more equal basis. Once again, these are just examples of issues that students chose as being important to them, and dealt with.

One final point, it must also be remembered that MontPIRG is not a political group comprised of students, it is a stu-

dent group active in public affairs. This allows MontPIRG to be educational as well as an effective voice for students. Involvement in public issues can be a valuable facet to any education. This is borne out by the existence and support of the internship program that allows a student to get credit for working with MontPIRG.

I can't say that the topics I've just mentioned will be the topics that the MSU student body would choose to deal with. However, they would have the choice, something that they do not have now. The very existence of these programs also shows that students can do something. Students can make a difference in consumer and other public policy issues.

If you, as a student and a citizen like the idea of being able to deal effectively and educationally with public issues important to you, then give MontPIRG a chance here. Sign the MontPIRG petition.

Deborah L. Coax

CLASSIFIEDS
Students 5c/word
Non-Students 10c/word

\$4⁰⁰ Hair Cuts **\$6⁰⁰** Tints
\$10⁰⁰ Permanents
classes starting 4/24
Mr. Mack's (family)
Beauty College
2 W. Main 587-5161

Greta's Greenhouse

Roses

\$15.00 a dozen

587-5163

Rainier Days '84

May 15-19

**A BENEFIT FOR
BIG BROTHERS AND SISTERS
OF GALLATIN VALLEY**

**16 TEAM CO-ED
SOFTBALL TOURNAMENT**

Trophies and prizes awarded to Top 4 finishing places.
Teams must register by May 11, 1984 by calling 587-1216.

Sponsored by:

Rainier, Rocky Mountain Pasta Co., & Sigma Phi Epsilon

A Bob Daniels Production

OPEN 9am-9pm Mon-Fri
JOHN BOZEMAN'S Sat. 8am-9pm Sun. 8am-1pm
BISTRO
242 E. MAIN
WEEKEND BREAKFAST!
BURGERS & SANDWICHES
SOUPS & SALADS
STEAK and PASTA
CHINESE FOOD
SEAFOOD
CHEESECAKES
See BISTRO LOVES TO CATER!
Business luncheons, Bar-B-Q's, Weddings
Our Restaurant is available for your next Party or Banquet!
CALL 587-4100
*BISTRO/bee-stro/n(French) 1: a European-style cafe serving generous portions of home-cooked cuisine. Freqented by locals yet hospitable to tourists.
2: a great place to meet, greet, and eat.



Marlene Mazuranich, one of MSU's 154 secretaries, diligently plunges into another day of paperwork in an effort to keep the Research Dept running smoothly. (Staff photo by Dave Smith)

Secretaries dictate professionalism

By **TIM BENSON**
Staff Writer

Today is a day when Americans honor the personnel who keep business offices across the country running smoothly. April 24 marks the date dedicated to women in the secretarial field as part of Secretaries Week.

However, the holiday is no longer referred to as National Secretaries Week. In 1982, the National Secretaries Association, located in Kansas City, Mo., changed its organization's name to Professional Secretaries International, with 40,000 claiming membership worldwide. It renamed its late April holiday Professional Secretaries Week.

Not including clerks, typists or receptionists, 154 secretaries are employed by MSU according to an estimate made by the Personnel Office on campus.

Because this holiday usually means for most secretaries a lunch date with the boss or annually receiving a token of appreciation, floral shops, candy stores and even coffee companies seize the opportunity to capitalize on the occasion. Despite contradictory assumptions, PSI has acted as sole sponsor of the holiday since its inception in 1952. Originated by U.S. Senator Charles Sawyer, Professional Secretaries Week's purpose is to recognize the importance of secretarial work.

"Because of the state of the economy, business success or failure depends on productivity," said Louise Jones, PSI's director. "And secretaries play an integral role in insuring business productivity."

productivity."

Jones explained that her organization attempts to dispel myths about secretaries and emphasize their importance to business by providing workshops and seminars. Admitting that secretaries have gained respect from their employers in recent years, Jones insisted that changes are still needed to educate management about the secretarial profession.

"We're still trying to fight the image that secretaries are housewife-types at the office," Jones said. "The reason we changed both names was to encourage management in particular to view secretaries as professionally competent workers."

One industry magazine, Personnel Journal, criticized advertisers in its current issue for perpetuating an attitude considered offensive by many secretaries. The article's author, E. James Brennan, complained that advertisers cast secretaries as mere coffee makers and candy eaters who act as decorative adornments to an office.

A survey of professional secretaries at their regional conferences in the United States and Canada last year concluded that women, who dominate the field, earn less than men because they have less experience and fewer skills, family obligations keeping them away from their jobs and poorer education.

Besides charging that women secretaries are denied salaries paid to men doing equal work, Brown insisted that women

are expected to work long hours without overtime with little hope for advancement. He said they are also required to cover for their incompetence. Brown stated that pay for secretaries is most often based on seniority rather than skill, effort, job duties, responsibilities or job title.

In addition to seniority, factors influencing actual salaries include an employer's pay policy of the title of the secretary's boss and the number of other employees at the work location, according to Brown.

However, secretaries with no experience are sometimes paid more than established secretaries. Brown wrote that the average salary climbs for those with up to 35 years experience but declines afterward. He said that secretaries who head their own household earn better pay than those who are dependents.

Opinions taken from the survey differed about the potential for career advancement. Secretaries who earned more from their profession, viewed their chances more optimistically. Brown said that although secretaries paid the most tend to be informed that career advancement depends on attendance at a college or a degree, employers generally pay them little more than high school graduates.

Besides this week, secretaries might also have 1984 named in their honor. Awaiting only Senate approval, the Year of the Secretary has a theme boasting about the secretaries' mastery of computers and insuring business productivity.

Sixtieth annual High School Week gets underway

Over \$50,000 in scholarships and fee waivers will be awarded to Montana high school juniors and seniors at the 60th annual High School Week* program at MSU Thursday through Saturday, April 26-28.

Nearly 1,000 high school students from approximately 160 of the state's 182 high schools are expected to send delegates to this year's program, according to Marie McNellis, High School Week chairperson and assistant director of admissions at MSU. The purpose of the three-day program is to provide delegates an academic preview of the university while competing for scholarship awards.

The scholarships and fee waivers, ranging from \$100 to \$1000, are based on results of a three-hour comprehensive test that will be administered to delegates Friday morning. The test covers English, mathematics, American history, biological science, physical science and verbal analogies.

Money for the awards is primarily donated by MSU colleges and departments as well as some contributions from alumni, local businesses and organizations. The scholarship winners will be announced at a formal Friday evening awards banquet scheduled in the SUB. The scholarships can only be used at MSU and will be awarded when students enroll in the fall.

Delegates are selected by their high schools on a quota basis, based on the high school's enrollment and the average number of students from each school who have enrolled at MSU during the past four years, McNellis said.

"High School Week provides students an opportunity to be exposed to faculty, administration and current students and to investigate information regarding specific curriculums,

majors and departments," McNellis said. "In addition, students have the opportunity to compete for scholarships based on their results from an academic exam administered on Friday."

The university's faculty, staff, administration and students all cooperate, including a 30-member committee which plans and executes the activities with the assistance of over 200 student volunteers.

Students will have the opportunity to meet with deans, department heads and academic advisors, visit departments on campus to discuss programs and visit with coaches on college sports, and learn about the intramural sports program.

Other events include and activities carnival scheduled Friday afternoon to provide delegates information on MSU clubs, organizations and activities. Tours of the main campus, residence halls, fraternities and sororities, Museum of the Rock-

ies and the MSU Bookstore will also be available. A barbecue hosted by the sororities and fraternities is planned Thursday evening and a dance will be held following the banquet Friday evening.

quiet Friday evening.

In addition, an Industrial Arts Fair, featuring exhibits from high schools around the state, will be held on conjunction with High School Week.

Exhibits and the fair will be held in Cheever Hall.

The delegates will stay on campus in the residence halls and in sorority and fraternity houses.



Peace loving fund raiser

By JOHN WARD
Associate Editor

Having fun by dancing to 60's classics and drinking a few beers with friends are the sentiments behind this Friday night's Students for Peace fund-raiser.

The dance will be held at the old Moose Lodge, 1102 E. Curtiss, across from Lindley Park. A 2 dollar cover will be charged and beer will be sold at 50 cents a glass. Doors open at 8 p.m.

KGLT's infamous Program Director Al Vanderway, will be keeping the vinyl spinning on the turntable. The Brett Quinn Band will make their debut with a half-hour set from 10:30 to 11:00.

SFP core committee person Dan Glenn said the non-profit organiza-

tion is stressing the event to be a fun time with no information of the group's activities being distributed.

According to Glenn, the 60's was a decade of heightened social consciousness and SFP would like to see society attain a greater level of social involvement.

Glenn said funds from the dance would allow the organization to provide students information on initiative 98 and October's Freeze Friday. Proceeds will also be utilized in distribution of information on U.S. policy on nuclear arms, the Middle East and Central America, Glenn added.

SFP is encouraging people to wear 60's dress to the dance. An award will be given to the individual sporting the best attire.

Who's Playing Our Song

MSU Architecture Students seek information regarding the theft of personal items, including calculators, portable stereoes, walkmans, and tapes from the Sophmore and thesis studios in Cheever Hall. The theft occurred on April 12th between 1:00 a.m. and 6:00 a.m.

If you have any information or knowledge about those responsible please contact the campus police (994-2121) or Dept. of Architecture, Cheever Hall (994-4255).

Beyond Borders:

By MINI CRAIG
Exchange student from Australia
Sophomore in E.E.

Hi! My name is Mini Craig, and I am here on an exchange program from Australia. The course I am taking is Electrical Engineering and I am in my sophomore year.

I arrived in Bozeman on the 19th of January and I felt this whole year was going to be an adventure and my excitement grew as I approached the University.

I was met at the airport and escorted to the dorms by Stephanie Becker from the Office of International Education. The next day I met Don Clark who played a major part in helping me come here.

Well, I was assigned a roommate, Shelly Erickson, who welcomed me right away and I knew I would have no problems adjusting to dorm life. The next few weeks flew past with my meeting new people, learning new names, and absorbing the culture. As I began to settle down I realized what a beautiful landscape Bozeman has.

I attend a fair few parties and enjoy sharing my culture with the people I meet, but closest friends are found outside of this scene. At the beginning I found myself in a lot of amusing and embarrassing situations, mainly because of a lot of different phrases and word connotations, but that was all part of the fun!

An Australian's perspective

Well, winter quarter began and I immediately noticed the educational differences. There were weekly assignments due and frequent exams which I was not used to. Initially I found it difficult to apply myself to studies. I could not believe how easily approachable the professors were. In Australia we rarely had exams and the lecturer simply came to class, spoke and disappeared. Tuition back home is free, but the quality of education is just as cheap here most lecturers have office hours and help sessions which are certainly of great value to me.

Another aspect of my life is becoming involved with B.S.U. (Baptist Student Union). There are no fellowships as such in Australia and this was a new and rewarding experience.

There are so many people to meet, places to see, and things to do but fortunately time is a limiting factor. I did go to Big Sky when I first arrived. I had never skied before but after many wet patches I managed to master the bunny slope. As Americans would say, "the place was just awesome!"

Contact with people is what reflects the image of a place and I know I am going through an experience I will always have in my heart. I would like to get to know more of you from MSU and expand my knowledge about America. Please feel free to drop by anytime. I am looking forward to meeting you.

Continuous Wear Soft Contact Lenses

FREE FREE

2nd Pair

B & L Continuous Wear Lenses



Worn For Weeks Without Removal!
• Comfortable • Easy • Convenient

Dr. K.D. Kuntz, O.D.

2006 W. Babcock 587-8333

Bozeman Contact Lens Center

Bike inspection being offered

By JOHN WARD
Associate Editor

Is your bicycle making strange noises? Or are the wheels wobbling for no apparent reason? Well, if these two things are occurring, or even if they're not, you can pedal over to the ASMSU Bike/Ski Shop this Saturday at noon and have your bike inspected.

Bike/Ski Shop manager, Curt Wessinburger, and his three member staff are offering a six-hour period of free bicycle maintenance inspections and recommendations on how to improve the condition of your bike and then how to properly maintain it.

Wessinburger said he and his staff have noticed an increase in unsafe bicycles, particularly "with younger kids," being brought into the shop. The staff felt it was necessary to initiate some action to help remedy the situation.

In addition to receiving a free

inspection and written recommendations on improving the safety of your bike, the Bike/Ski Shop will be offering several other free services and distribution of biking pamphlets.

The staff will be registering bicycles with the city of Bozeman as a protective measure against theft (which Wessinburger called a big problem). They will also give advice and evaluations on purchasing bicycles.

Wessinburger said the staff will be distributing a pamphlet on bike maintenance, as well as, Montana Bicyclist Guide. The guide, according to Wessinburger, "provides information of concern to every cyclist."

Included in the publication are state regulations on operating bikes on roads and safety precautions while riding a bike.

A coupon for a free half-hour of stall time will be given to students, faculty, and staff bringing their bikes in to be inspected.

The 12 noon to 6 p.m. inspection will be conducted in front of the SOB Barn (behind the Hedges Dorm Complex). In case of inclement weather, the inspection will be upstairs in the barn.

Stall times will be available to rent. Stall rental is \$1/hour for students and \$2/hour for faculty/staff.



Pricing eggs

These young ladies compare their profits from last Saturday's ASMSU Daycare Center's Easter egg hunt. (Staff photo by Dave Smith)

Extending Reality

Remember Dock Ellis?

He was a pitcher for the Pittsburgh Pirates and the Texas Rangers who took the league by storm in 1971 with a 19-9 record and led the Pirates to a World Series Championship in that same year.

Back then every kid idolized the Dock, imitating him by throwing wild Wiffle Ball pitches into windows and treasuring baseball cards with his picture.

Yep, he sure was a hero.

Recently, Ellis admitted that when he pitched no-hitter in 1979, he was under the influences of LSD. Well doesn't that make you feel dandy. All of that time you thought it was intensely in his eyes. And what did those strategy talks with the shortstop really sound like?

'Hey Dock, the plate is over there.'

With a childhood image like Ellis' tarnished, it makes me wonder how many other adolescent heroes weren't really what they seemed.

What if your first-grade teacher admitted she was a homicidal maniac who had a fetish for chain saws?

'No, no Johnny, Don't hold your scissors like that or you might cut yourself. See, what did I tell you. Hee-hee-hee!'

It would erase a few good memories, wouldn't it?

But let's go further, shall we? How about the older kid next door. Now he couldn't do anything wrong, could he? But what about those Easter eggs nobody in the family could find?

'You kids only found three eggs? That's strange; I hid 47.'

And what about that stange explanation of how your garage burned down.

'Well, your cat, was like, kinda caught on fire and was, like, jumping all around setting all sorts of things on fire, and, like, your garage burned down. Yeah! Yeah! That's how it happened.'

You did think he had a few strange quirks though, like when you would play with your combat personnel.

'Ooh, did G.I. Joe lose an arm? That's too bad. Uh-oh! Joey just stepped in a land mine. That's going to cost him an arm and a leg.'

But you looked past these minor incidents because he was your hero. Then you found out what he was really like.

But it could have been worse. It could have involved your family. What if your grandmother confessed that she took LSD before she baked cookies for you?

'Oh boy, thanks Grandma! So many different shapes and sizes. Even little mosquitoes.'

How about if your father said he toked up before he took you fishing so he could tolerate you?

'Dad, you're supposed to put the worm on your hook, not up your nose!' Hopefully none of your childhood heroes have not lived up to your expectations, but the Ellis incident makes you wonder if you are still being deluded by some. And with his success under the influence of a drug, you know how many other baseball idols will be demolished?

'Coach, Freddie's having a bad trip. He's been smoking pine tar again.'

'Good. He's pitching tonight.'

Yeah, childhood heroes might never be the same for generations to come. But mine can still be ruined. So if you hear one day that Tom Seaver raped an adolescent girl, please don't tell me.

-Jim Weeks

VOTE
for a change!
VOTE
"Wild Bill" Trowbridge
for Senate.

FOR SALE

1 pr. ROSSIGNOL
(Big Sky Rentals) 190 cm
LOOK 5005 Bindings &
LOOK Poles

1 pr. NORDICA Boots
size 6 1/2 Ladies

1 pr. ROSSIGNAL SM skis 175 cm

1 pr. OLIN Mark III skis 190 cm
w/TYROLIA 150 bindings

587-2505

DOUBLE BUCK NITE
All Seats \$2.00
with this coupon to:
Reckless, Sahara, Tarzan
Good Tue-Wed-Thu, Apr. 24, 25, 26

TOI MOVIE INFORMATION
586-9505 586-9506

7:15, 9:20 **ELLEN**
SEAN PENN
ELIZABETH McGOVERN
Racing with the Moon
A PARAMOUNT PICTURE **PG**

7:30 and 9:30
MICHAEL DOUGLAS * KATHLEEN TURNER
Romancing The Stone **PG**

7:15 Only **CINEMA**
BROOKE SHIELDS
Sahara **PG**

7:30
9:10
Robin Williams
MOSCOW ON THE HUDSON **R**

9:35 Only
7:15 Only
POLICE ACADEMY **PG**
GREYSTOKE
THE LEGEND OF TARZAN (PG)
CAMPUS SQUARE

7:25, 9:20
GOLDIE HAWN
KURT RUSSELL
SWING SHIFTS **PG**

RIALTO
Ends Tonight
Shows 7:00, 9:15
Bozeman Film Festival Presents
"ARSENIC AND OLD LACE"
(Wed. & Thur. Only - "Beggars Opera")

UNLESS YOU PRINT YOUR OWN . . .

... it seems like a student never comes up with enough money to cover school expenses and have anything left over to enjoy.

The Air Force ROTC Program at MSU is offering one 3-year and one 2-year scholarship to students majoring in any of the following areas: Electrical Engineering, Civil Engineering, Mathematics, Meteorology, Architecture, and Physics. To be eligible for the scholarships, you must meet the following criteria at the end of the Spring Quarter:

2-year Scholarship

- a. 2.50 cumulative GPA
- b. One year of Calculus with a 'C' or better
- c. Pass the Air Force Officer Qualifying Test (AFOQT)
- d. Graduate by December 1986

3-year Scholarship

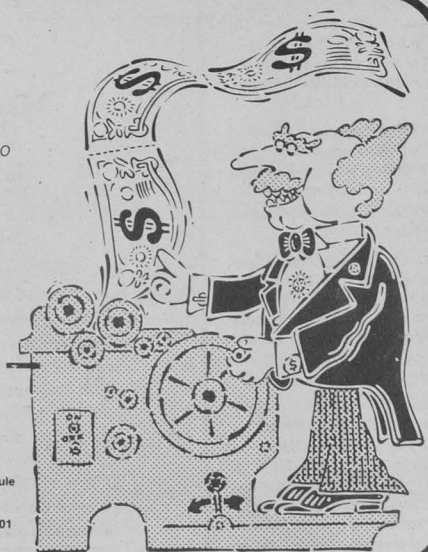
- a. 3.00 cumulative GPA
- b. One year of math with a 'C' or better
- c. Pass the Air Force Officer Qualifying Test (AFOQT)
- d. Graduate by August 1987

AIR FORCE

ROTC

Gateway to a great way of life.

Call Now to Schedule
For the AFOQT
994-4022
or stop by Room 201
Hamilton Hall



Speaking Out: What do you think the student voter turnout will be in Wednesday's ASMSU elections? Why?

Photo journalism by Tom Lowe



Marcia Tanner Jr.—Business Finance

I think it will be less than 50 percent. Basically it's apathy more than anything else. A lot of people don't know the issues. They (the students) don't know the people going for it (senate and president's office).



Eric Betts Soph.—CET

I would say less than 10 percent. No one really cares about student government.



Jim Nickman Jr.—Chem E

I'll say about 80 percent. There are some pretty major issues going on here, dude. Some pretty major issues.



Mike Hope Jr.—Business Management

Probably about 10 percent. Voter apathy is pretty great on this campus. People just don't care. They (the candidates) don't get out and students aren't informed about the issues.



Lori Stock Fr.—Business

I've talked to a lot of people who aren't really too interested in voting because it doesn't appeal to them (the students) very much. So I don't think that many (students) will turn out. It won't be as high as 75 percent.

Coming Up:

April 24-26

Tuesday

Parenting Series: "Selecting Child Care"—Geared Towards the Parent and Provider." 7 p.m. Hedges small dining room. Panel discussion on what to look for when selecting day care for children. Sponsored by ASMSU Day Care and Family Housing Advisory Council.

The Las Vegas Brass Quintet will present a concert at 8 p.m. in the Reynolds Recital Hall. Tickets for the concert, sponsored by the ASMSU Performing Arts Committee, are \$3 for MSU students and \$5 for non-MSU students.

The sixth annual MSU Career Days will be held Tuesday and Wednesday, in the SUB. Career Days will feature representatives from various companies and businesses and offer students an opportunity to discuss career options in various fields. No interviews will be conducted during the two-day event. It is free and sponsored by Career Placement and Planning Office.

A workshop on "Interview Techniques" will be held Tuesday and Wednesday, from 2-3 p.m. in 273 SUB. Dave Herries will provide suggestions for the development of a good personal presentation.

A workshop on "Ins and Outs of the MBA" will be presented from 3 to 4 p.m. in 272 SUB. Jim Lee will provide information on requirements entering MBA programs, the types of programs available and job prospects.

A seminar on "Career/Life Planning: The Essentials" will be presented from 3 to 5 p.m. in 273 SUB. Mark Haviland and John O'Connell will discuss the essentials of career/life planning including realistic self-assessment, utilization of career information resources and decision-making.

A seminar on "Resume Preparation" will be held Tuesday and Wednesday, from 2 to 3 p.m. The Tuesday seminar will be held in 272 SUB and the Wednesday seminar will be held in 275 SUB. Mark Haviland will provide information on how to produce a resume that is both attractive and effective.

A seminar on "Professional and Personal Issues in the Work Setting ... A Sharing" will be presented from 11 a.m. to 12:30 p.m. and from 12:30 to 2 p.m. A panel of professional women will respond to questions dealing with communication and relationships in the work setting including role modeling, the double standard and job negotiations.

A Pre-law Club meeting will be held today at 7:00, Room 273 in the SUB. This meeting will be for election of officers for the coming school year. Please attend.

Wednesday

State Representative Pat Williams is interviewed by KGLT News Director Pete Hirsch. Topics include the federal deficit, Central America, and education. The interview will be aired at 6:45 p.m. on KGLT 91.9 FM.

Thursday

What to do about Central America? Datus Proper, a career Foreign Service Officer, will present the Administration's view. Mark Anderson, a recent MSU Graduate, will present the dissenter's view at 101 Reid, 7:30 p.m.

Coffeeshop Concert: Pete and Paul Barkett will perform from 8 to 10 p.m. in the Northwest Lounge of the SUB. It is free and open to the public.

A lecture on "Memorials to the Dead Speak" will be given by William Hubbard, ommittee, are \$1 for the Urban Innovations Group at UCLA, at 8 p.m. in 215 Cheever Hall. The lecture, which is free and open to the public, is part of the visiting lecture series sponsored by the School of Architecture.

The film "MASH" will be shown at 9 p.m. Thursday and Friday, April 26 and 27. The Thursday showing will be in Culbertson/Mullan dining room and the Friday showing will be in North Hedges. The film, which is free and open to the public, is sponsored by RHA Programming.

High School Week: The 60th annual High School Week program, which attracts over 1,000 high school students from around the state, will be held through Saturday, April 28.

WE DELIVER FREE!
587-2411

Dorms - Greek - Organizations

The Montanan again sponsors the Crazy Picture Contest

1st Prize \$50.00
2nd Prize \$25.00
3rd Prize \$15.00

Winners will be published in the Montanan!

Greeks: Call 587-4033 to schedule your time

Dorms: Sign up your group at your dorm desk

Organizations: Sign up at the ASK US Desk

RULES

Minimum of 9 in a group. must be in good taste to be published, judged on originality and execution of idea.

Judging by popular vote
5x7 and 8x10 color prints available



ASMSU BICYCLE & SKI REPAIR SHOP

FREE BICYCLE MAINTENANCE INSPECTION

Saturday, April 28
12 to 6 p.m.
At the SOB Barn

Know Your Bicycle's Condition!

Bring it to us and you will receive:

—Bicycle Inspection Report - a written evaluation of your bicycle concerning its general condition and what maintenance needs to be performed.

—The Montana Bicyclists Guide - a state publication of bicycling regulations and basic information of concern to the Montana cyclist.

—A COUPON FOR ONE HALF HOUR FREE STALL TIME IN THE ASMSU BICYCLE & SKI REPAIR SHOP.

—Bicycle Registration with the City of Bozeman.

PARENTS please accompany children under age 12.
THIS IS FREE and OPEN TO THE PUBLIC.
FOR MORE INFORMATION CALL 994-3621.

Men netters hit jackpot with 3-0 weekend

By **BLAKE SHAW**
Staff Writer

When Bobcats attack their prey, they do it with full intentions to kill. For the MSU Bobcats men's tennis team, they did just that this past weekend in the Spokane, Washington area.

The Bobcats cleaned house on all three of their opponents over the weekend in what head coach Jerry Peach claimed were the best per-

formances for the men's team in two years.

The Cats opened up the weekend of action with an 8-1 clobbering of Whitworth College. Whitworth went into the match with an 11-2 won-loss record and a top position in the Midland Empire Conference.

"That felt good, winning that one," Peach said. "It showed me we were ready to play, and it was a good way to start the weekend. Everyone

played well. I saw some of the best singles matches taht I've seen all year from our team."

Saturday, the Bobcats continued their weekend attack, whitewashing Central Washington 9-0.

"We just outmanned them in every position," Peach maintained. "They weren't a real test, but it was good to work on our weaknesses against them. Every little bit of experience helps."

The Cats only real test for the

weekend came against Eastern Washington. EWU jumped out to a 3-0 lead, but MSU came back with the final three singles wins. The Cats then swept all three doubles matches to pick up a 6-3 win and push their won-loss record to 9-11.

"They were the best team we played," Peach noted. "We got a good team effort. There were no stars or standouts. We got good play from everyone, and that is encouraging."

Peach was overjoyed with his team's sweep of the doubles matches.

"That's a good sign of improvement," remarked Peach. "The guys finally did what we've tried to do all year. They were more consistent and picked up the points needed to win the close matches. The guys looked a lot stronger this weekend than I've seen them all year."

(continued on page 15)

Lack of indoor boosts Wolf Pack

By **PHIL WARD**
Sports Editor

Sports Ed. note—This is the second in a seven-part series looking at the Big Sky Conference men's track teams which will be in Bozeman on May 16-19 for the league championships.

After spending most of the outdoor track season competing in California and dropping their indoor track program this season, the Wolf Pack of Nevada-Reno is a virtual unknown to most Big Sky Conference track programs.

Due to lack of financial support, the Wolf Pack was forced to drop the indoor program, and for 16-year coach Jack Cooke, this move has been advantageous to his club which looks to vie for the conference championships, despite their lack of exposure in the league.

"Without an indoor program, our kids have been much more relaxed," Cook said. "We haven't had to drill, drill, drill all season. If you're a contender, you have to peak for the cross country championships in the fall, then peak for the indoor championships in winter, and then come back and try to peak for the outdoor season. It's just too tough on the kids. I'm very happy to be out and I hope we don't have to go back. We've accomplished a lot this year, and not having the indoor season has helped."

"I had been stripping our accounts to make it to the indoor championships because the athletic department wouldn't give us any extra dollars. I just couldn't do it anymore so it made sense to just drop the indoor program."

The extra training period has been beneficial to the Wolf Pack as a number of the Reno athletes are ranked high in the league standings in each event. This list is the only way that Nevada-Reno can judge the other league school's talents and vice versa.

"Not seeing the other schools affects us to some extent because all we see are the league rankings," Cook said. "They can be misleading because you don't know about that athlete's health status. It's tough to figure where we'll finish and the other schools don't know how to figure us out either. It's like rolling the dice, and we hope it comes up seven or 11 on the first roll."

"With our California competition, we're getting all we can handle."

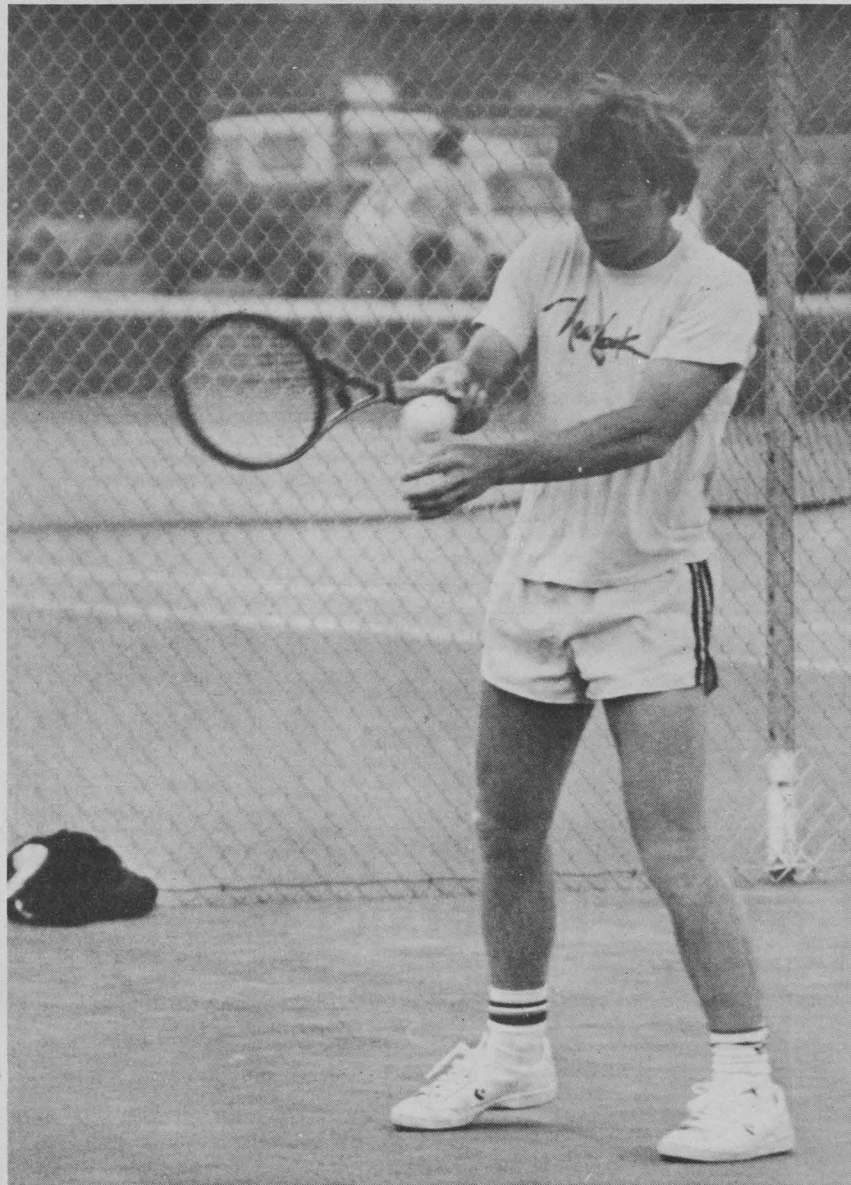
Cook said his team's strengths lie in the field events, primarily the throws where junior college transfer Trent Eddings is leading the conference in the shot put with a 64-1 effort to his credit. He is also second in the discus with a 182 foot throw behind MSU's Lance Deal.

Lee Lawrence is third in the discus with a throw over 171 feet. Cook said the Wolf Pack has four javelin throwers who have thrown over 200 feet.

The Wolf Pack also features the league's best sprinter in Phillip Attipoe who leads in both the 100-meters (10.44) and the 200-meters (20.95). The swift runner is currently hampered by a pulled hamstring, but Cook anticipates Attipoe's return by the league finals.

In the conference championships, Cook sees Idaho, the indoor champions, as the favorites with his team, Montana, Boise State, and Northern Arizona battling for the next spots. Because of funds, Cook's team will be taking only its best.

"We're gonna fly, so we're only taking those athletes who are in the top eight in the conference standings," Cook said. "We can only go with quality athletes. If we had to drive to Bozeman, we wouldn't go, so because we're flying, we can afford to take only the best."



Outdoor tennis in Bozeman?

Craig Robinson gets some practice on the unfamiliar MSU outdoor courts which have seen little action from the MSU netters due to inclement weather. The men netters went 3-0 over the weekend in the Spokane area. (Staff photo by Tom Lowe)

Stretching ideas for active people

A frequently overlooked aspect of fitness is flexibility. Everyone should strive to maintain some level of flexibility. The range of joint mobility varies in each area of the body such as ankle, trunk, shoulder, and neck. Some joints have higher flexibility while others are quite low in flexibility.

When you increase your flexibility, you are able to move more freely and efficiently. Stretching can help prevent joint stiffening which can occur from injury, disease, inactivity, and age. Stretching exercises are also helpful in a routine before vigorous exercise. Calisthenic exercises help prepare the body for activity by increasing the core temperature of the body and increasing the elasticity of connective tissue.

It is also found that many lower back problems can be associated with inflexibility, muscle weakness, and muscle imbalance. As treatment for certain disorders, many orthopedists recommend a series of stretching and relaxation exercises. Improved flexibility also aids sport performance, reduces the chance of injury, and helps to relieve some muscle soreness. Stretching helps to condition the muscles, tendons, ligaments, and bones to greater tensile strength and elasticity.

Flexibility can be improved faster and be retained longer than any other aspect of physical fitness. It is important to avoid stretching tissue to unbearable pain. Most authorities recommend holding the stretch for 10-30 seconds.

A complete flexibility routine involving the major joints should be performed statically and prior to vigorous exercise, both to aid in warm-up and to improve range of motion. Muscle temperature is ele-



ated and blood flow is increased, and this helps to make the muscles more pliable and therefore less likely to trigger the stretch reflex, which is the body's warning signal to avoid overstretching. Muscles should be stretched so a slight pull is felt in the bulky segment of the muscles rather than in the joints. It is wise to gradually ease into the stretched position and avoid going beyond the point of mild discomfort.

Stretching should be preceded by some form of exercise that elevates muscle temperature. Cold muscles are not fully pliable and may be easily pulled. Flexibility exercises should be used prior to a vigorous workout and immediately after such activities as weight training and jogging to stretch those muscles which may have actually been shortened during a workout.

Not breathing indicates a lack of relaxation. Concentrate hard to breathe and not hold your breath during any phase of exercise. Relax the muscle being stretched and avoid the urge to bounce. Do your stretches gradually and slowly and add a few seconds to holding time each workout until you can hold each stretch for approximately 30 seconds.

—Lauri Scott

Cat netters sweep matches

(continued from page 15)

MSU 8 Whitworth College 1

Singles—Mike Anderson (MSU) def. Sten Carlson 4-6, 6-3, 6-3; Craig Robinson (MSU) def. Kirk Rector 7-6, 6-3; Mike Weaver (MSU) def. Dave Miller 6-0, 6-1; Darren Clark (MSU) def. Bob Krueger 6-3, 6-3; Bill Anderson (MSU) def. Brett Stein 6-4, 6-4; Mark Murphy (MSU) def.

Doubles—Carlson-Stein def. B. Anderson-Robinson 7-6, 2-6, 7-6; Murphy-Lance Bouchee (MSU) def. Rector-Miller 6-2, 6-2; Clark-John Campbell (MSU) def. Krueger-Schrader 6-1, 6-1.

MSU 9 Central Washington 0

Singles—Anderson def. Eric Garretson 6-4, 7-6; Clark def. Matt Weaver 6-4,

6-3; B. Anderson def. Rich Minife 6-3, 6-1; Murphy def. Joe Teeley 6-0, 6-1; Campbell def. Len Duncan, 6-0, 6-1; Bouchee def. Doyle Shaffer 6-1, 6-3.

Doubles—Weaver-M. Anderson def. Garretson-Weaver 6-0, 6-1; Clark-Robinson def. Duncan-Minife 6-2, 6-1; Murphy-Bouchee def. Shaffer-Teeley 6-0, 6-1.

FREE DELIVERY 587-9002 FREE DELIVERY 587-9002 FREE DELIVERY 587-9002

FREE DELIVERY 587-9002

Wednesday Lunch

Taco Salad Bar

\$2⁹⁹

FREE DELIVERY 587-9002

Friday Afternoon club 3:00 pm - 5:00 pm

\$1.25 Pitchers of Beer

"Study Break" Sunday - Thursday 9:00 pm to midnight

COUPON

\$5.99

Lg. 15" PIZZA
1 ingredient
& Quart of Coke

good in store & delivery
expires 5/11/84

COUPON

COUPON

\$9.00

Jumbo 17" Pizza
2 ingredients
& Quart of Coke

good in store & delivery
expires 5/11/84

COUPON

Durand's

WILL MATCH YOUR DOWN PAYMENT

Are you planning on making the decision of a lifetime...like purchasing a diamond? It can be a tough choice finding the right cut, the right color, the right setting and the right jeweler.

When you're ready to make that important decision the diamond professionals at DURAND'S are ready to help. They'll make sure the diamond you choose is the right one, at the right price. DURAND'S will help you buy that diamond. You just make your cash down payment and DURAND'S will match that payment.

<i>EXAMPLE:</i>			<i>EXAMPLE:</i>		
	Ring		625.00	Ring	750.00
	You Pay		312.50	You Pay	250.00
	Durand's Matches		312.50	Durand's Matches	250.00
	Balance	000.00	Balance	250.00	
<i>EXAMPLE:</i>			<i>EXAMPLE:</i>		
Ring	900.00		Ring	750.00	
You Pay	400.00		You Pay	250.00	
Durand's Matches	400.00		Durand's Matches	250.00	
Balance	100.00				

Make your selection from these styles or from one of dozens of new settings that have just arrived. Choose from our wide selection of diamond rings, carved bands and loose stones.

Durand's

JEWELERS

3 E. MAIN • 586-2486
Appointments Available.

**THE
SUB STATION**

(behind the Hinky Dinky)

Featuring:

**GREAT DELI SUBMARINE SANDWICHES
SOLD BY THE INCH**

call ahead for instant pickup
or stay and eat

16" Ham Sub \$5.50

or

8" Ham Sub \$2.95

Your choice of bread, cheese, &
vegetables

Now serving soft serve
frozen yogurt and custard

expires
4/30

**THE SUB STATION
5 TAI LANE
587-2166
Open 11 a.m.-9 p.m.**

**Free
Delivery
after 5**

Seniors, track athletes top marks for thinclads

By **PHIL WARD**
Sports Editor

Success for the MSU men's track team this weekend came from the seniors in Seattle and the men on the track in Boise, Idaho, as the Bobcats split forces for a pair of invitationals.

In Seattle at the University of Washington Invitational, seniors Lance Deal and Jeff Clem highlighted MSU's performances. Deal bettered his own school record in the hammer throw, unleashing a 205-2 toss, just one foot, six inches off of the Olympic trials qualifying standard.

Deal finished second in the hammer and came back to win the discus with a 193-3 effort.

Clem was involved in what MSU distance coach Kirk Keller called "the best steeplechase field of the spring besides the NCAA's," and came away with a tenth place finish in 8:48.5. Weber State's Farley Gerber won the event in 8:25.

"The seniors did real well," Keller said. "They've been to this meet before, but I think the younger guys were awed by the competition. They shouldn't have been because they could run with them."

Other performers for MSU at the UW Invite included Doug Dray (3:57.25), Denny West (4:00.37), Bill Kelly (4:03.09), and Mark Decker (4:07.5) in the 1,500-meters.

"I'm quite disappointed with our middle distance runners except for Dale Huls (in the 800-meters)," Keller said. "We just haven't been moving."

In Boise at the Bob Gibb Invitational, senior Glenn Test led the MSU attack by winning the 110-meter hurdles in school record time of 14.39. Other top marks for MSU at

the meet included the 4X400-meter team of Willie Schoenbeck, Rick Tilstra, Uwe de St. Jeor, and Tim Gray (3:15.06), the school's second fastest time; Scott Steckel with a season's best in the shot put (56-9); Tilstra and Schoenbeck with season's bests in the 400 hurdles (53.79 and 54.04, respectively); Huls in the 800-meters with a personal best (1:53.3); Jim Weeks and Brett Owens with personal bests in the 5,000-meters (15:15.6 and 15:18); Chuck Ladd with a season's best in the 100-meters (11.14); and Steve Swan with a season's best in the 200-meters (22.39).

"It was a great meet," assistant coach Dan West said. "There were a lot of great competitors. The guys on the track looked real good, but we've got some problems in the jumping events. We have to solve some inconsistency things. We're not jumping like we did in the indoor season."

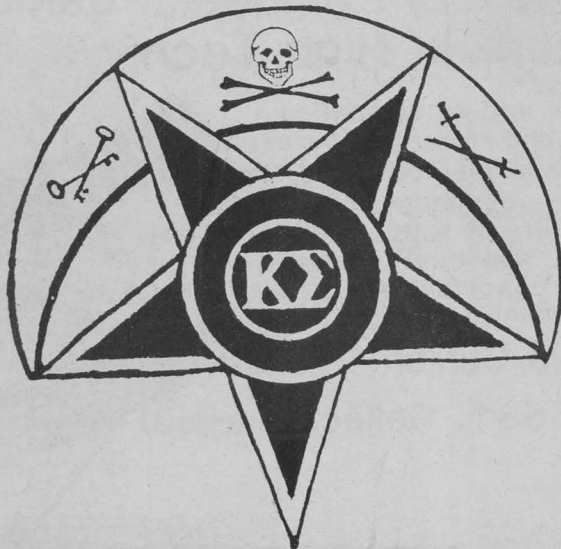
"We've got guys no heighting and getting real poor jumps. Maybe if we get some hot weather we could work on it. It's not an excuse, but it's hard to get a quality workout for any event in cold, snowy weather. We've got to do what we can and realize the weather can't slow us down. We have to get things going with the Cat-Griz dual this weekend."

The meet was unscored but featured an invitational high jump which produced two athletes with 7-4 efforts and an invitational mile which saw a winning time of 4:02.45.

The worst news from the weekend of action was that long jumper/triple jumper Doug Smith sustained a pulled hamstring which makes him questionable for this weekend's dual against the Grizzlies in Missoula.

WELCOME TO THE KAPPA SIGMA HOUSE

Brotherhood at Kappa Sigma means late night talks, intramural teams, and the excitement that fills the house before throwing an all campus party. Ritual and initiation provide a common tie of commitment between diverse individuals. Kappa Sigma may be the most diverse fraternity on campus - diverse socially, racially, religiously, in campus interests, and in campus involvement. And yet, we are still a very close house. Individuals are bonded together as loyal brothers. And that bond will last well beyond your college years.



CAREER DECISIONS??

CHANGING MAJORS??

UNDECIDED??

Take the Strong Campbell Interest Inventory for computer scored results. Drop in Monday through Friday, 8 a.m. - 4:30 p.m., Counseling Center. No waiting. Ask for Dr. John O'Connell or call 994-4531 for more information. \$3.00 test scoring charge. Go for it!

ATTENTION

NURSING STUDENTS

If you plan to begin upper division coursework in Nursing at an MSU extended campus during Autumn Quarter, 1985, or Winter Quarter, 1986, you may petition for guaranteed placement between April 1984 and May 30, 1984.

Petitions must be accompanied by a \$50 deposit. For further information and petition forms, contact the MSU School of Nursing office at 994-3783 or your current pre-nursing advisor.

Track improvement nearing completion

By PHIL WARD
Sports Editor

"We'll do the best we can with the facilities we have. It's probably the worst facility in the conference, but we'll try to make the best of the situation."

This is the assessment of the Montana State University outdoor track complex south of the university which will be the site of the women's Mountain West Athletic Conference and men's Big Sky Conference track championships the week of May 16-19. The comments were made by MSU women's coach Dale Kennedy who outlined some of the improvements made on the track in order to make it ready for the league finals.

Kennedy listed a number of changes and improvements including a resurfacing of lane one, an extension built onto the high jump landing pad to accompany a new high jump pad, a new shot put ring and landing sector of gravel and sand, a stand for judges, announcers, and the autotimer, the moving of the bleachers to the northwest end, the removal of the yellow storage trailer, a discus cage, new long jump and triple jump take-off boards, new concrete long jump pits, and new sand in those pits.

"The shot put landing sector will help a lot," Kennedy said. "We had been throwing into weeds and it was a real quagmire six days out of seven because of spring snows. This will drain water real well."

Kennedy said moving the bleachers to the other side made a lot of sense, insisting that spectators will have a better view of the finish line as well as the long jump, triple jump, shot put, and discus.

He said spectators will be parking in the parking lot across from Reno H. Sales Stadium and then using the asphalt walkway around the stadium to approach the track.

"The area will be fenced off for ticket-taking purposes, so everyone will use the asphalt walkway," Kennedy said. "That way they won't have to walk through the mudhole in front of the track to get to the bleachers. Also, only athletes and officials will be allowed on the infield. We'll be patrolling that carefully."

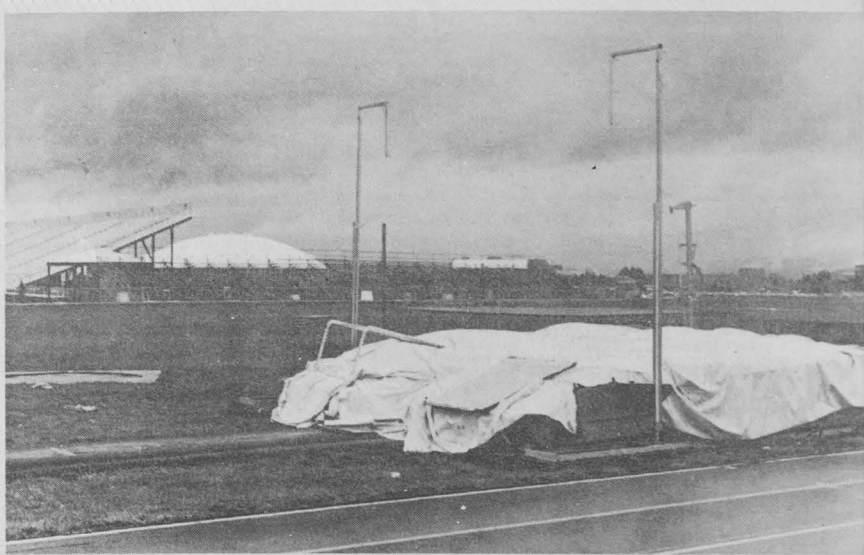
Kennedy said that a telephone system and a better electronics setup would need to be implemented before the meet gets underway.

Although Kennedy said the adjustments have made the track better and will give MSU the opportunity to host a better meet, he noted that future considerations must be made.

"The locker room facilities is a real critical issue," Kennedy said. "The athletes now have to use the restrooms at the football stadium. Also, the bleachers are in bad shape, but they will do temporarily."

Kennedy asserted that the facilities at MSU won't be the only determining factor to the Bobcats hosting a viable track championship.

"There's more to hosting a meet than having a great facility," Kennedy stressed. "If we provide an organized meet, have good officiating, and make the athletes feel welcome, we hope that can offset a facility that's not of great quality. We've made some adjustments to have the best track possible, but it's still not ideal."



A view of the MSU track showing the bleachers moved to the opposite side. (Staff photo by Tom Lowe)

Montana State University

Student Health Insurance

Students enrolled for Fall/Winter ONLY
need to re-enroll NOW!

Your Insurance Expired March 27, 1984

Spring/Summer Enrollment

March 26-April 30

Office Hours: On Recording

Call for Information 994-3199

New students can enroll also.

WORD PROCESSING

Resumes • Letters • Research Papers

wordworks

586-1212

Prompt • Professional • Guaranteed

The Pickle Barrel



WE DELIVER FREE!
587-2411

A STUDENT I.D.
OR
FEE RECEIPT
IS
REQUIRED

FOR EACH VISIT AT THE
STUDENT HEALTH SERVICE

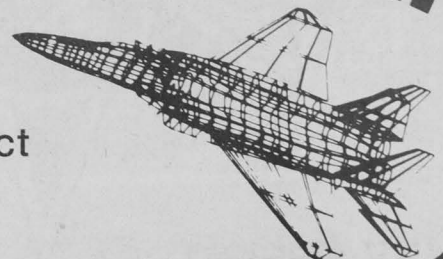
Pilot and Electrical Engineer Positions A Future In High Tech:

Your hard work, education and determination can lead to a challenging and rewarding career as an Air Force pilot or as an electrical engineer. The rewards are great. The challenges unsurpassed. If you are a college graduate or will graduate in the next twelve months, and want more details on these Air Force opportunities, contact our Officer Placement Recruiter

TSgt Tom Curran

(406) 723-5531 Collect

AIR
FORCE
A great way of life.



AIM HIGH

Soft Colored Contact Lens Special



\$50 off regular price with coupon stop in and try them on. See what colors can do for your eyes.

Expires Friday, May 18

BOZEMAN CONTACT LENS CLINIC

"STUDENT CREDIT AVAILABLE" With 17 offices serving you in Montana, incl. Main Mall Bozeman • 587-7050 Livingston • 1-222-0949 Belgrade • 388-1708 Whitehall • 1-782-2359

Dr. Kyle McMurray
Dr. Vaino

LOOK OVER THE RAINBOW.



Take a look at Digital's affordable Rainbow 100™ personal computer. It runs the widest assortment of 8 and 16 bit software. Everything from spreadsheet analysis to word processing to graphics.

42% Educational Discount

Through May 15

Base System List
\$2,027.10 \$3,495.00

	Discounted Price	List Price
Iso discounted 42%		
92K Memory Upgrade	\$377.00	\$650.00
Graphics Option	\$261.00	\$450.00
Microsoft Basic 86	\$145.00	\$250.00
1Mbyte Hard Disk	\$867.10	\$1495.00

See Microcomputer Department for complete listing.

MSU BOOKSTORE
STUDENT FACULTY OWNED SINCE 1921

Women tracksters paced by frosh heptathlon victory

By PHIL WARD
Sports Editor

A number of personal and seasonal bests and a school record in the heptathlon were the rule as the MSU women's track team competed in the Bob Gibb Invitational over the weekend in Boise, Idaho.

Freshman Marlene Michalek was the big news as she shattered the school's heptathlon mark by amassing 4,947 points in the seven events to win the event.

Her marks and points in each event included 695 points in the 100-meter hurdles (15.5), 823 points in the high jump (5-2½), 717 points in the shot put (31-3), 647 points in the 200-meters (27.5), 657 points in the long jump (16-1¼), 713 points in the javelin (120-4), and 695 points in the 800-meters (2:27.9).

Michalek needed a strong performance in the 800-meters to finally overtake favorite Lynn Wingle of Idaho State who led throughout most

of the competition. The only time Michalek led was at the finish.

"She had a real balanced attack," MSU coach Dale Kennedy said of Michalek. "She kept close and never led till it was over. There are areas where she can improve, and she has a shot of qualifying for nationals (5,200 points).

"This was the highlight of her collegiate career. Something finally happened for her and it's got her excited. We feel she can do even better."

Kennedy bases this belief that Michalek is off her personal bests in the high jump, long jump, and 200-meters. She did get a PR in the shot put and 800-meters.

Other MSU athletes with personal records and season's bests included Jean Basta with a school record in the triple jump (33-1¼), Cindy Thorstadt in the javelin (146-7), Lynn Creek in the 1,500-meters (4:36.64), Annette Hand in the

3,000-meters (9:47.24), and Marty Billingsley in the 800 (2:19.44).

MSU went 1-2 in the shot put with assistant coach Marcia Mecklenburg winning with a meet and stadium record of 50-10½ and freshman Dawn DeHart second at 45-10.

Kennedy attributed the strong competition to the large number of improved performances.

"The competition was great and we were pushed real hard," Kennedy said. "Also, it's getting that time of year when we ought to start coming around. We have only two meets before the conference championships, so it's getting down to the nitty-gritty."

MSU was hurt by the absence of middle distance runner Kim Millhouse who missed her second meet in a row with an injury. "We need her to get rolling heading into this weekend's dual with Montana," Kennedy said. "She could be a key in that meet."

INTRAMURALS

Attention all soccer and softball enthusiasts, tomorrow (Wed., April 25th) is the final day to file your team rosters for Coed Soccer and Men's

and Women's Softball. Bring rosters and a \$10 cash forfeit fee to Rm. 114 P.E.C.. For both events there is a mandatory manager's meeting Fri-

day, April 27th at noon, in the fieldhouse. Play begins May 1st. Don't miss it!

508 W. Main

BANGTAIL BICYCLE SHOP

SPRING TUNE-UP TREK SPORT TOURING RACING MOUNTAIN BIKES

ROSS **\$15.00** MIYATA

Sign-ups are still being accepted for the Intramural Weightlifting Competition. Classes in the women's division are 114 lbs. and under, 115-132 lbs. and 133 lbs. and over. For the men there will be 6 weight classes. Individuals will compete in the bench-press, dead and squat lifts. All those interested must sign-up in Rm. 114 P.E.C. by Friday April 27th.

Keep an eye out for these upcoming Intramural Events: Team Bike Race and Horseshoe. Entries start April 30th.

Early Bird Special

Recieve a free cup of coffee and the Breakfast Special for only **95¢** with this coupon. 6:30 a.m. - 8:00 a.m.

UNION MARKET



Freshman Maneely rises quickly in MWAC tennis

By **BLAKE SHAW**
Staff Writer

What do the words tennis, No. 2, nationals, freshman, and immediate winner all have in common?

Nothing, unless you take a look at MSU freshman standout Linda Maneely, who virtually has stepped into the limelight of the Mountain West Athletic Conference tennis program.

'Linda is the spark of our team. We're really fortunate to have her in our program.'

—Coach Jerry Peach

Maneely, a computer science major from Great Falls, was highly recruited, and after this season, there is little doubt why.

Maneely has not only jumped into the Bobcats' lineup, but she has hustled her way to the No. 2 position. Add to that stat her credentials of having posted a 14-6 won-loss record, second best on the MSU team, and being nominated for a berth in the NCAA Division II national championships, and you've got an athlete that would leave opposing coaches swimming with envy.

Yet for MSU tennis coach Jerry Peach, he's bathing in the pride of his youthful program which has become one of the most highly-respected teams in the MWAC.

"Linda is the spark of our team," Peach said. "She's got as fine of strokes as anyone we've ever had. We're really fortunate to have Linda in our program."

For many, the transition from high school competition to collegiate athletics is usually a hard and long task to carry out, but if anyone has

molded quite easily to the college scene, Maneely is one.

"She wants to learn," said Peach. "That has helped her, and she's come a long way since she first started here at MSU. She had never played doubles before this season, and now she is winning all of her doubles matches."

Although the young tennis player has seen nothing but success in her first year as a college athlete, she maintains rather a quiet humbleness about herself.

"I was really surprised about being nominated to nationals," Maneely said. "I didn't think No. 2 players could be nominated. My goal was to see the whole team go; I never even gave it a thought that I

might make it without the whole team going."

The freshman star isn't living in the past, however. She's already put together a list of goals for herself.

"I want to keep playing well and play my best at the MWAC championships and at the national championships if I'm selected," Maneely noted. "I just want to be as good a representative for MSU as possible. I've learned so much this year, especially patience. I think it's really important for me to keep a good positive attitude and keep working hard on both my strengths and weaknesses."

According to Peach, Maneely does have some youthful problems.

(continued on page 21)

MSU announces AOM's

Two women athletes have been selected athletes of the month at MSU.

Honored for their performances in March were Dawn DeHart in Track and Robin Coverdale in tennis.

The Athlete of the Month Award is sponsored by Fidelity Union Life Insurance Company. The award honors the outstanding athlete in each sport competing during that month. Players are chosen by the coach of their sports.

DeHart, a freshman from Loveland, Ohio, recorded the top shot put mark in the Mountain West Athletic Conference in her first outdoor meet of the season. She threw a personal best of 46-feet, four inches for a sixth-place finish at the Golden Bear Meet of Champions in Berkeley, Calif., a mark that still leads the conference. The toss also earned her MWAC Athlete of the Week honors for the third time this year.

"Dawn continues to do an out-

standing job for us," Bobcat coach Dale Kennedy said. "She has been improving consistently during both the indoor and outdoor seasons and has broken her own personal best marks in three meets this year."

Coverdale, a senior from St. Paul, Minn., helped the Bobcats to a 5-3 record on their annual spring break road trip to California. Despite suffering a broken left wrist on the trip, Coverdale managed a 6-2 singles and 5-3 doubles record (with teammate Joy MacPherson) during the month. In addition, she captured the open singles title at the Yellowstone Racquet Club Championships in Billings.

"Robin's accomplishments during the month were impressive enough by themselves, but when you stop to think that she played several of those matches with a broken wrist, then they're even more impressive," tennis coach Jerry Peach said.



Pizza Express!
587-4525
AFFORDABLE
FREE DELIVERY

**CUSTOM & METAL
FRAMES**

40% OFF In Store
Moulding

25% OFF Posters
MSU Students & Faculty Only

BAIRD STUDIO
24 S. Willson • 586-0956
"Across from the Downtowner Mall"

Learn to Fly

\$549

Solo in Less Than 30 Days



Most people dream about flying, but few of us have the chance to turn our dreams into reality and actually learn to fly . . .

So, if you've ever looked up at the sky, and dreamed about flying, your chance has come . . . For a limited time, you can turn your dreams into reality with Piper's Blue Sky Solo Course. For only \$549, and a little of your spare time, our flight instructors can

take you from ground instruction up through solo flight in less than a month. In less than 30 days, you can be flying a modern low wing Piper aircraft and enjoying that special world known only to those who fly . . . Instead of dreaming about flying, now you can do it.

Haven't you waited long enough? Come see us and we can get you started flying today and make your dreams a reality.



The Great Potato put-on!

FREE LARGE LEMONADE
with any purchase from
Spuds 'n' Stuff



Spuds n' Stuff

SIMPLIFIED MATHEMATICS TUTORING

$$\frac{1}{\sqrt{x}}$$

$$\int f(x) dx$$

$$-3x^2 + 2x$$

$$\frac{dy}{dx} = f'(x) = y' \quad [8 \ 2]$$

$$\frac{d^2y}{dx^2} + y = 0$$

$$\sin^2 x + \cos^2 x$$

$$\int e^{-x} dx$$

Call oby 586-0806

SCOOTER'S

How Fast Can You Eat The Hog Troff?

(9 scoops of ice cream, 3 bananas, topping, nuts & a cherry)

The first Annual Hog Troff contest will be held on May 5 at 1:00 p.m. at Scooter's Ice Cream. Enter now! The winner will receive free a week's worth of:

1. Sundae from Scooter's Ice Cream
2. Pizza from Dominoe's Pizza (Lg. single ingred.)
3. Movies from Sounds Easy Video Rental

(One of each product a day for a week)

Entry fee \$5.00 - deadline Thursday, May 3, 1984

For info call
Scooter's Ice Cream
2020 W. Babcock
Phone 586-3896

ENTER NOW!



ICE-CREAM

Women netters dump pair of weekend foes

**By BLAKE SHAW
Staff Writer**

The MSU women's tennis team wound up a successful weekend of tennis in Grizzly land, pulling off two victories and boosting their won-loss record to 12-8 in Missoula.

The Bobcats, welcoming back freshman standout Ashley Ashba, pulled off a 5-4 win over Washington State. Ashba had missed over a month of action due to a severe ankle sprain she sustained in mid-March.

Robin Coverdale, MSU's No. 1 singles player started off the MSU victory as she knocked off WSU's Brenda Tate 6-4, 7-6. Tate was the only one to beat Coverdale last season in regular singles action.

The Cats then dropped the next three singles matches before Kym Boyce stopped the Washington State streak. Boyce defeated Whitney Wright 0-6, 6-2, 6-1.

"That was a great match," MSU head tennis coach Jerry Peach said. "It says a lot when a player can lose 6-0 in the first set and then return and

win the next two sets. Kym really kept her composure and showed what kind of winner she really is."

Boyce was nominated by Peach for player of the week for the Mountain West Athletic Conference.

Ashba, playing in her first match in over a month, followed Boyce's win with a 6-1, 6-3 decision over WSU's Liz Hawley.

The Cats then finished up the dual match, winning two of the three doubles matches.

"We're lucky that we had Kym and Ashley," Peach noted. "Those two did excellent. I'm proud of the way Boyce came back after that first 6-0 loss in set number one. She adjusted mentally and played her game. It

was exciting to see Ashley back on the court, too. I've been saying all along, we need her badly, and she made the difference in this match."

The Bobcats then dealt a blow to the Grizzlies, clobbering them 8-1. The victory was the third time this season that MSU had beaten its cross-state rivals.

Again, Coverdale started off the assault with a 6-2, 6-1 victory over Tekla Hempel. Following her in victorious fashion were Linda Maneely, Ashba, Joanna York, and Boyce.

"It was a real good weekend for us," Peach said. "We saw a lot of improvement in our girls, and things are starting to fit together at the right time."

Maneely performs well in MWAC

(continued from page 20)

He said she needs to work on consistent concentration and in building confidence in herself and her tennis ability.

"That'll all come in time," noted Peach. "She's a hard worker, a go-getter, and we just need to give her time. How good she gets is up to her. The level of play is also up to her. All I know is she's real promising, and I'm excited about having her here at MSU for three more years."

Many times with success there comes an added amount of pres-

sure into the picture. According to Maneely, she doesn't feel any of it.

"I'm young and the underdog in the big matches," quipped Maneely. "If I go to nationals, I don't think there will be as much pressure on me as there will be on the older players there."

The pressure has slowly eased over the tennis season for the 19-year-old.

"I'm more relaxed now than I was when the season started," she concluded. "That's helped my performance a lot."

EXPONENT CLASSIFIEDS
5¢ Students
10¢ Non-students

Bobcat Weekly Special

With this coupon, receive a 5 oz. Burrito for only 39¢. (Reg. 69¢)

Clip this coupon and save 30¢ off the regular price on a delicious 5 oz. Burrito from Mini Mart.

For a price this good and a taste this great, you'll SAY OLE.

But hurry. This offer expires April 30, 1984. So stop by your nearest Mini Mart today, where little things mean a lot.



Limit one per coupon. Offer good at Bozeman Mini Mart only.



Our special **Moviemate** offer is winning us some very big friends.

Rent our Moviemate* for only 4.⁹⁵ Monday-Thursday and see a second movie **FREE**** with this ad

*Includes Moviemate VCR and 1 movie
**Rentals on a daily basis only, Security deposit or VIP card required.

Must present ad at time of rental



expires 5/30/84

University Square 586-4345

CLASSIFIEDS

PERSONALS

Hey Care! Vous etes beacoup jolie! Mea hopa you comma homa soon. Comprehenda?

Some people "say" they will do something Others "DO" something for ASMSU. Vote Korsmoie and Mehrens for action for talk.

Bucko - only 7 more weeks to go until I'm yours for a week.

Vote action not talk on April 25. Elect Sam Korsmoie and Mary Carol Mehrens for a new ASMSU.

Happy Birthday Mom! I'm sure you and Dad will be out celebrating and I'll be stuck with a yucky babysitter. Have a good time anyway. Love your "Daughter" Susan.

KE welcomes our new activists. Congratulations Mark K., Jerry G. Steven K. and Mark P.!

Fancy posters and brochures don't make a good President. Vote action on April 25 with Sam Korsmoie and Mary Carol Mehrens.

The Beach Ball still haven't received the fraudulent mail package. Should be forwarding back correspondence. Burl wants information on the condition of the greens. Present schedule is too much. Thank God I have a large apartment to spread out in. Weather sucks. And how was your day? Cane.

Vote for a transportation study and the right to choose Vote Korsmoie - Mehrens tomorrow.

Hey you - remember me? Huey show? Up front? Stage left? You had pink top, tight jeans, heels, coat on shoulders? You said thank you? Remember? Let's meet again soon. New Drug for Blonde.

T.K. - We could always talk instead of working on my car - L.

Take the initiative for a new ASMSU with Korsmoie and Mehrens.

Tanya K. - You've caught my eye... next time I "work on my car", wish you'd help - L.

Korsmoie - Mehrens. Let them develop a student concerns committee that will address your concerns. Vote April 25.

At least -- VOTE!

The team for you. Vote Hill and Hamburg.

Smith for Senate.

For reliable representation in ASMSU. Vote Sean Scott.

April 25th. Vote Hill and Hamburg - the qualified candidates.

Vote Sean Scott for Senate April 25.

Vote April 25th: Smith Senate.

Korsmoie - Mehrens. Proven dedication to student involvement. Vote tomorrow.

Spurs and Fangs, old and new, continue the tradition of involvement - Vote Sean Scott for Senate.

Legislative experience that can't be beat. Vote Korsmoie - Mehrens to ensure ASMSU's interests in the 1985 State Legislature.

Vote Smith for Senate tomorrow.

Vote Hill and Hamburg. Improve ASMSU; don't make it larger.

Get involved! Vote Smith for Senate tomorrow.

Vote Korsmoie and Mehrens tomorrow.

We care about ASMSU. Vote experience. Vote Hill and Hamburg.

Scott for Senate - paid for by the committee to elect Sean Scott.

FOR SALE

1970 VW Squareback, good radials and battery, runs ok. \$500/best offer. 587-1829 evenings, keep trying.

1972 Honda 450. Good condition. \$300. 587-1601. Keep trying.

76 VW Rabbit, green clean, good condition. \$1,500. O.B.O. 6-5073. 6-8466, evenings.

Two Craig power Play Car Speakers work great! 25% "OLDS" Trumpet with case. HPM40 Stereo Speakers. best offer. 587-5872.

1970 Plymouth Roadrunner 440-6 pack, 4 spd., all original, good cond., drive anywhere \$3800 or best offer. Helena 475-3549.

TOYOTA PARTS FOR SALE: Have starters, rims, body parts, engine parts, etc., for 1966 thru 1971 Toyotas. Going cheap, call 587-5571 evenings.

1978 Subaru Brat, sunroof, sliding rear window, AM/FM cassette stereo, excellent tires, two excellent spares, \$2500. 587-2398.

1980 Yamaha 400X5, lots of extras. Good condition. 586-3421.

69 Datsun Pick-up with Topper needs engine work. 586-1235.

CHEAP Airline ticket for San Jose, California one-way. half price ask for Don 222-7390, Livingston.

JOBS

Girls needed for modeling age 14 to 25, 5'6 or taller. National Modeling Network no experience necessary, call today for free evaluation. Studio Bozeman 587-4033.

Government jobs. \$16,559-\$50,553/yr. Now hiring. Your area. Call 805-687-6000 ext. R-4836.

\$360 Weekly/up mailing circulars! no bosses/ quotas! Sincerely interested rush self-addressed, stamped envelope. Division Headquarters, Box 464CEAW, Woodstock, IL 60098.

Major Billings Bank has Summer opening for individual with excellent secretarial skills - typing 60-70 wpm, shorthand preferred. Send letter of application and resume to P.O. Box 30678, Billings, MT 59107.



Custom Designed
Jewelry
gold silver
colored golds

Rings Like No Others

Wedding Bands Engagement Sets
Gifts of Endearment

by appointment only — 587-1821
James L. Goehring
Artisan in Expressive Metals

Dysan. The Finest Quality Diskettes Available.

Dysan's 5 1/4" or 8" diskettes are available single- or double-sided, and in single- or double-density formats.

Dysan's advanced production techniques assure that each Dysan diskette is certified 100% error free. So you can count on Dysan for your IBM*, Apple*, Tandy*, Atari*, Commodore*, Osborne* or other personal computers.

So give us a call. Or stop by. We have a complete inventory of the finest quality diskettes on hand. Dysan diskettes.





Dysan is a registered trademark of Dysan Corporation. *Trademarks of respective manufacturers.

BITS-N-PIECES

Two perspectives on U.S. foreign policy in Central America will be the topic of a forum Thursday, April 26.

The forum is scheduled at 7:30 p.m. in 101 Reid Hall at Montana State University.

The forum will feature Datus C. Proper, a career foreign service officer and currently director of the Office of Regional Political Programs, Bureau of Inter-American Affairs, and Mark Anderson, a recent MSU graduate.

It is free and open to the public and sponsored by the Office of International Education.

The deadline to apply for Sweet Pea '84 arts and crafts booths is May 15. Applicants must submit 35 mm color slides of their handcrafted material for judging by a jury of Bozeman area artists and craftspeople. Applications are available at Artifacts Gallery, 308 E. Main, Bozeman. For information contact Russ Heiker at 587-0293.

Architect William Hubbard will speak on "Memorials to the Dead Speak" Thursday, April 26, at 8 p.m. in 215 Cheever Hall at Montana State University.

Hubbard is the director of the Urban Innovations Group at the University of California-Los Angeles.

Hubbard received his bachelor's degree from the University of Virginia and his masters at

Massachusetts Institute of Technology. Prior to his current position he worked in private firms in New York and Richmond, Va.

He is the author of "Complicity and Conviction: Steps Toward an Architecture of Convention" and has had articles printed in several publications. He has been involved in several architecture projects in Virginia and he has been a guest lecturer at several colleges and universities in the U.S.

The lecture, which is free and open to the public, is part of the Visiting Lecture series sponsored by the School of Architecture.

A panel discussion on selecting childcare will be presented Tuesday, April 24 at 7 p.m. in the Hedges small dining room at MSU.

The discussion is co-sponsored by the Associated Students of MSU Day Care Center and the Family Housing Advisory Council. It is free and open to the public.

Representatives from the ASMSU Day Care Center, the Bozeman Day Care Association, Pooh Corner Day Care and a day care home provider will discuss what parents should look for in child care.

Free child care is available at the ASMSU Day Care Center for workshop participants. For more information contact Programming Services at 994-4781.

Free Beer or Pop pitcher

Plus \$2.00 off with purchase of a large pizza at

— Karl Marks Pizza —

Tuesday Nites 5-9

1003 W. College 587-5544

Deliveries Not Included

Make a good buy before you say goodbye.

Andy Griffith



Buying your leased phone now saves you time and money next term.

This year, don't leave for home without your phone. Buy it before summer and save yourself some time and money. Buying your AT&T leased phone now means you'll have your phone with you the very first day back to class.

To buy the phone you're leasing, just call AT&T Consumer Sales & Service's toll-free number. Or visit

any of our AT&T owned and operated Phone Centers. It's that easy. So call us before you say goodbye. Then unplug your phone and take it with you. And have a nice summer.

1-800-555-8111

Call this toll-free number 24 hours a day.



© 1984, AT&T Information Systems

Bozeman
15 West Olive

CLASSIFIEDS

Note: Exponent policy requires all classified ads to carry the names of authors on the original blue forms along with submission of some form of positive identification when they are presented to the Business Office in Montana Hall. Anonymity will be maintained unless publication of names is desired. Students, faculty and any other persons will be responsible for what is published regardless of intent, direction of statement or personal belief. Release of name(s) will take place only when ordered by court of law. Business classifieds will no longer be accepted.

SERVICES

Hot Air Balloon Instruction, learn to fly in 10 hours special Spring rates. 587-1544, 586-9473.

Simplified math tutoring, call Oby 586-0806.

Custom sewing, alterations, mending, call Michele 586-7573 eves.

LOST & FOUND

\$25 Reward for the return of my HP-33 left in 339 Johnson 4. 16. 84 phone 587-4944.

ANNOUNCEMENTS

HIGH SCHOOL WEEK 1984 - April 26, 27, 28 coming soon.

It is going to happen!

Hey, SPCM Majors! Get involved, meet new friends and have some fun. Meeting, Tuesday, April 24, 5:00 p.m. in Wilson 1-122. Tonight.

Look! Is it a bird? A plane? No it's a High School Senior. Its High School Week 1984, April 26, 27, 28.

Paradise Dance - Baxter Hotel

Caravan of Dreams Belly Dance Troupe presents Midnight at the Oasis May 5 Baxter Ballroom. Tickets available at Cactus Records, SUB Box office, or call Cranchush 587-4728.

One week and counting... High School Week begins Thursday April 26.

Do you know what's happening April 28th at the Baxter?

To all the present and future teachers, counselors, administrators, and parents: Community Intervention Workshop is coming to Bozeman June 11! Learn how to prevent and stop alcohol and drug abuse. For more info call 388-6027.

Pregnant? We care. The Pregnancy problem Center offers free pregnancy tests, referrals to social services, and information on positive alternatives for you and your baby. Call our 24-hour hotline, 586-9444.

SPCM MAJORS! Now's our chance to have a voice in our Dept. Meeting in Wilson 1-122 TONIGHT Tuesday, April 24 at 5.

It is going to happen Thursday night April 26th from 9-11:00 in the Hannon Lobby.

Overeaters Anonymous will meet this Friday in Wilson 1-117 10:00 a.m.

Its 1984! Remember when? Next week High School Week, April 26, 27, 28.

Live band, open bar. Baxter Hotel - April 28th.

SPEECHES UNITE! Student vs. Faculty softball, Kegger, New Friends, New advising, Career info, Beer Volley Ball. Become known in your dept. Spring blow out. Organizing meeting Tuesday at 5, Wilson 1-122.

Is it an invasion? No its High School Week, April 26, 27, 28. Next Week!

Hannon Talent Show, Thursday, April 26th in Hannon Lobby.

Dance the night away, all campus - semi formal dance. Baxter Hotel - April 28. Tickets: SUB Box Office, Resident Hall Desks, at the door. \$6.00 couple, \$3.50 single.

MSU Welcomes High School Seniors, April 26, 27, 28. High School Week 1984.

WANTED

Christian female roommate wanted. Share "extra nice" 2 bdrm apt. \$150/mo. ALL utilities included. Call 587-5353, keep trying.

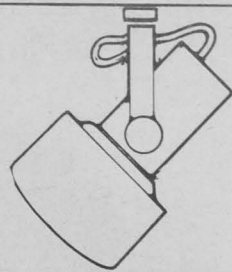
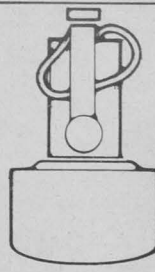
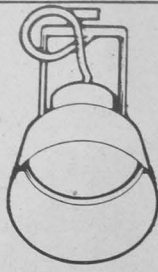
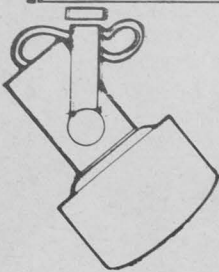
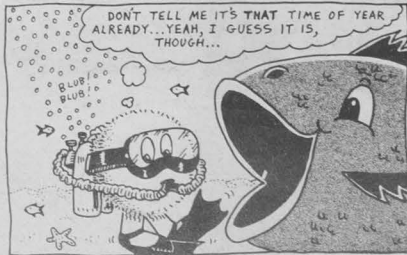
Roommate Needed: Available May 8. Furnished apartment: 1 block off campus. \$132.50/mo. plus 1/3 electric, \$130 deposit, share bedroom; must be neat and non-smoker. Call Mark at 586-0098.

Roommate Needed, Bsmt. Apt. close to campus. \$125.00/month, no utilities, large yard. Available May 1st, call 587-2492.

Need 12+ mo. lease 2-4 br. home with fenced yard. Excellent local, references, single preferred. 587-2095.

Moo U.

by Steve Preston



DENNIS MILLER

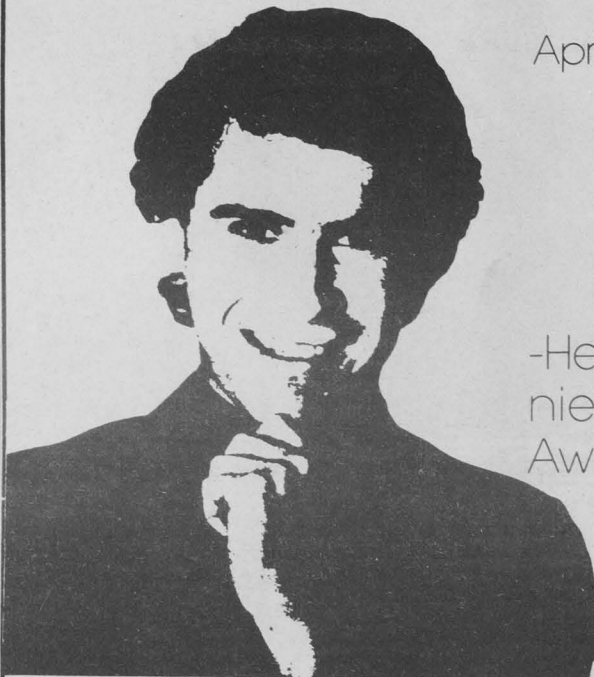
the funniest man in town

Appearing
April 24, 25, 26, 27, 28

Placed in Playboy Magazine Humor Contest

-He has won the "Funniest Man in Pittsburgh" Award.

-Finalist in the New York Laugh-Off comedy competition.



BLACK ANGUS

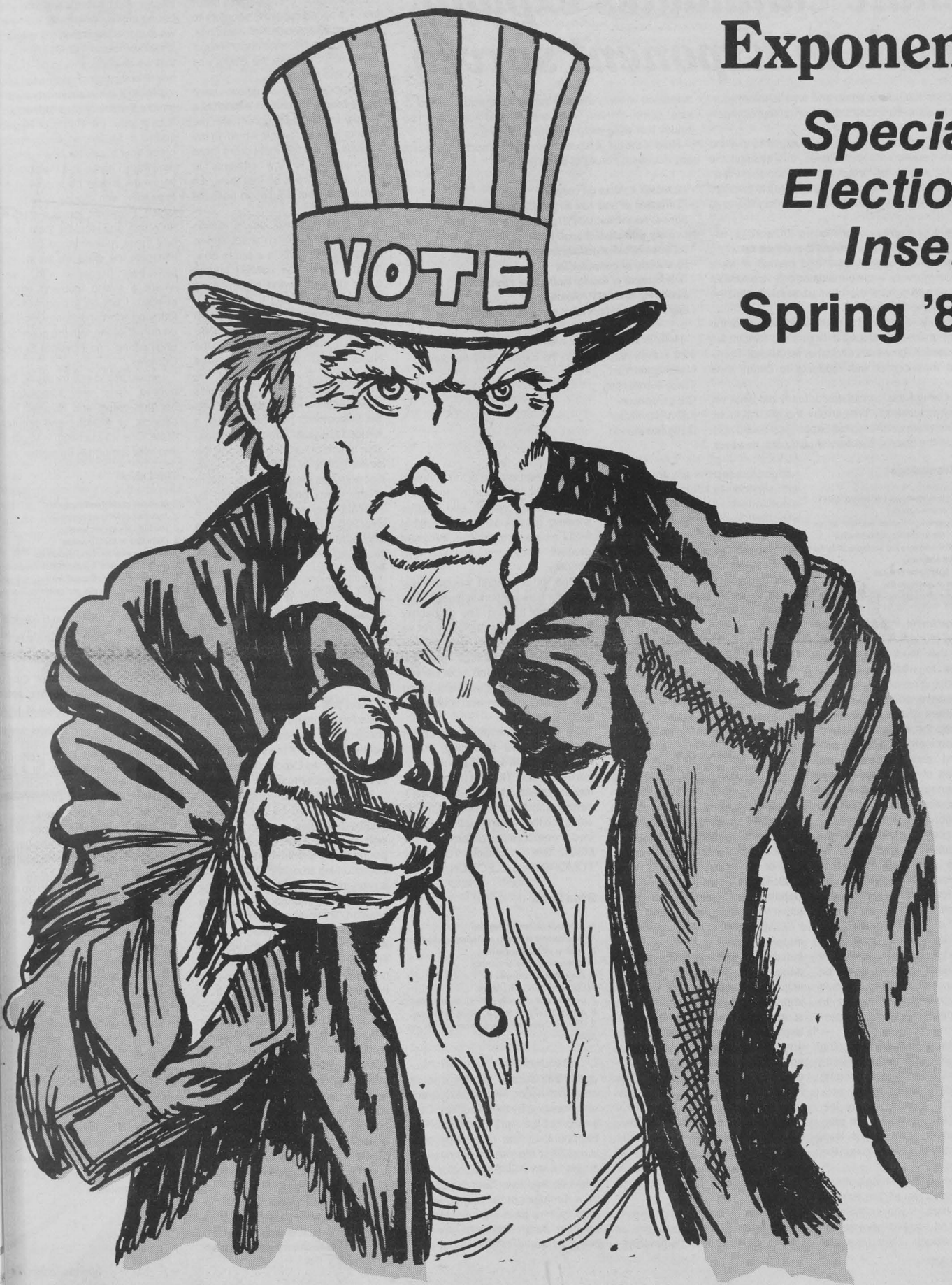
Steak House & Lounge

520 W. Mendenhall

Exponent

***Special
Election
Insert***

Spring '84



Senate candidates explain stands in Exponent survey

It's election time once again and time to inform ourselves on how the candidates stand on issues of importance to us.

In an effort to make it easier for students to see the differences between the candidates, this election the Exponent changed its format for its special election issue. We asked all of the senate candidates to prioritize a list of issues and any others they felt were significant to cite.

In the past, candidates were allowed 300 words to say whatever they wanted. This proved to produce rambling statements of little significance and carried in most cases a commonality — the candidates only wrote about one issue — with most of the information taken from the previous Exponent issues.

What we have attempted to do this year is to offer the candidates a series of issues in hopes the candidates would readdress the issues and other issues not mentioned, and then confer with students to create their platform.

Whether or not the candidates actually did what we hoped for, we cannot say. We can say, though, that those who did submit a response to the Exponent (five did not), did prioritize the issues. Readers should note, however,

William Trowbridge

1. OTHER: Informing the student body of ASMSU programs and senate activities
2. OTHER: Improving relations between the student body and the university administration
3. OTHER: Maintaining a low student activity fee through careful budgeting.
4. Increased lighting on campus
5. Evaluation of computer fee
6. Development of faculty and course evaluations

I feel the most important issue concerning students is information. It seems that students are uninformed as to what the ASMSU Senate is doing on a week-to-week basis. I believe one of the major responsibilities of the senate is to always keep the student body well informed concerning ASMSU programs and senate activities. As another part of this, I also believe that the senate should also try to improve relations with the university administration.

Student body cooperation with the administration is necessary on issues like increased lighting on campus, evaluation of how the new computer fee should be used, and development of faculty and course evaluations. The administration holds significant control over these matters and should listen to student input on them. The senate, as the students' representatives, should provide a convenient means to communicate with the administration.

The following issues are being decided directly by the student body at large, not by the senate: changing the method of districting (or not), changing the student activity fee, and MontPIRG. I suggest that concerned students do express their opinions on these issues through the various media.

Budgeting is the senate's major activity. Related issues are evaluation of user fees for various ASMSU programs and stipend reviews for ASMSU positions. User fees are,

that since we only allowed the candidates 300 words or less, some of them were only able to address a few issues that were most important to them.

Here is the list of issues given to the candidates (not in any necessary order of importance):

- Increased lighting on campus
- Evaluation of user fees for ASMSU programs
- Stipend review for ASMSU positions
- Dealing with student apathy
- Increased student activity fee
- Evaluation of computer fee
- Development of faculty and course evaluations
- Districting of ASMSU Senate
- Any other issue important to the candidate

Here is a list of the candidates who failed to submit their survey responses to the Exponent by deadline:

Neil Heckerman
Tracy Henderson
Chuck Jenson
Kathy Kovalicky
Doug Stevenson

needed to keep the activity fee low, and stipends to keep people interested in their work for ASMSU. It is important for each budgeting session to review the amounts required both for stipends and for user fees.

As a senator, my major task will be to insure that the senate is aware of the students' wants and needs, and makes decisions based upon those wants and needs.

Heidi Smith

1. Dealing with student apathy
2. Districting of ASMSU Senate
3. OTHER: MontPIRG
4. Increased lighting on campus
5. Evaluation of user fees for ASMSU programs
6. Evaluation of computer fee
7. Increased student activity fee
8. Stipend review for ASMSU positions
9. Development of faculty and course evaluations

Student apathy is an important issue and should be of substantial concern to the ASMSU Senate in 1984. Lack of student involvement cannot be entirely attributed to the students. I believe that the ASMSU Senate should take the initiative to strive for student involvement.

ASMSU districting is an issue I support. However, it is not in the senate's, but in the hands of the students now. Districting by living arrangements is a plan designed to improve student involvement and to stimulate competition. With the at-large system presently used there are fourteen senatorial candidates competing for twelve seats. This system obviously does not promote competition. Districting will also guarantee a proportionally representative senate. Sam Kormoe's initiative will involve all segments of the student population. Our senators will become accountable and responsible to the people they live with and around.

Although MontPIRG is not a senate issue, if organized here at MSU it will need open communica-

tion between itself and the senate. I support coordination between MontPIRG, the senate, and all other existing groups on campus. What MSU needs is an active, informed student body, not an apathetic majority.

One of the least controversial issues I can support is that of adequate night lighting. The probability of sexual assault is obviously not as high as in urban areas, but hopefully lighting will discourage potential threats. The main and most beneficial function will be that of alleviating fear among women who walk alone at night.

In brief conclusion, student apathy, ASMSU districting, MontPIRG, and night lighting are my concerns for 1984. Three of four of these issues directly support America's democratic process. Student involvement is the key to an active, organized, democratic community at MSU. Get involved! VOTE IN TOMORROW'S ELECTION.

Sean Scott

1. Increased student activity fee
2. Development of faculty and course evaluations
3. Dealing with student apathy
4. Increased lighting on campus
5. Evaluation of computer fee
6. Districting of ASMSU Senate
7. Development of faculty and course evaluations
8. Evaluation of User fees for ASMSU programs
9. OTHER: Communication between students and ASMSU

Communication between students and senate members is an area that needs vast improvement, as evidenced by the "Speaking Out" section of the April 10 issue of the Exponent. Of the responses published, half did not even know the duties of an ASMSU Senator, and only one had ever been contacted by a senator concerning an issue. How can we have effective representation when students are not being informed of the issues and

senators are not seeking out students' views? To combat this problem, I propose requiring senators to speak at Residence Hall meetings, greek house meetings and in front of campus groups like the Spurs and Fangs and Circle K.

Many students I know have expressed a desire to establish a faculty evaluation program with the results published. This would, in my opinion, make the instructors more accountable to the students in choosing courses so that they can obtain the best education possible here at MSU.

In light of next year's tuition increase, maintaining the activity fee at its present level is a prime concern of mine. The ASMSU budget could go further and satisfy many more people without a hike if managed properly. Events scheduling should be targeted at mainstream acts like Huey Lewis and the News, which appeal to a large number of students. Part of the ASMSU budget should go towards better publicity for its programs. This will accomplish two things. First, it will lead to greater campus participation, which in turn will enhance the performance of ASMSU services. Secondly, as people become aware of the many programs offered by ASMSU, they will take note of the over 200 opportunities for leadership and career-related job experience, resulting in increased student involvement.

Jerry Malmo

1. Dealing with student apathy
2. Districting of ASMSU Senate
3. Evaluation of computer fee
4. Increased lighting on campus
5. OTHER: Transit system
6. Development of faculty and course evaluations

I feel that all the issues we were asked to comment on deserve to be thoroughly addressed. Unfortunately, because of the limited space provided by the Exponent, I can only respond directly to four.

First, I feel that dealing with student apathy can be done before apathy becomes a major problem with students. One way is to start during each orientation session for our incoming students. I believe that a presentation of ASMSU should be incorporated into each orientation session. This presentation will show the new students exactly what ASMSU is, all the programs ASMSU sponsors and runs, and how easy it is for every student to become an active and involved participant in ASMSU and Montana State. As a senator, I would work with Student Affairs and Services to see that this is done.

As of now, the districting of the ASMSU Senate is a student issue. However, if and when it passes and anything needs to be resolved or clarified pertaining to the districting issue, I, as a senator, would work hard to see that this is done correctly to make districting work as a viable policy.

As a student, I can clearly see the need for an increase in the amount of lighting here on campus. The next step is to utilize the information from

the senate's Safety, Strategy, and Issues Committee's lighting and phone survey which will tell where we students feel increases in lighting should be made. However, I do feel that we students should not have to pay directly through increased parking fees. It is the university's job to ensure the safety of all students.

Last year, the Board of Regents added a \$1 fee on each student credit hour to pay for new computer hardware. I agree that the computer hardware should be improved and expanded with money already collected. However, this is a state-run university and I feel the state should pay these maintenance costs and eliminate the extra fee we students have been burdened with. This is where a strong lobbying effort is needed. I will be joining ASMSU's lobbying effort and these will be high on my list, along with the push for an Engineering and Physical Services Complex.

I would like to end by saying that I believe it is very important to become active and involved in all aspects of ASMSU and Montana State. One way to begin is to get out, and vote tomorrow. So please do.

Tim Lohof

1. Increased student activity fee
2. Increased lighting on campus
3. Dealing with student apathy
4. Districting of ASMSU Senate
5. Stipend review for ASMSU positions
6. Evaluation of user fees for ASMSU programs
7. Evaluation of the computer fee
8. Development of faculty and course evaluations

Certainly a prime issue for MSU students is student activity fees. Increases, I'm definitely in favor of them, given first that they're for an appropriate need and that they're moderate in size. I don't really believe that a \$2 fee-hike is at all excessive.

Increased lighting on campus is not a fall issue at all — one only needs to be on campus for a little while to see that it is very necessary. I believe it's actually a serious problem that needs to be solved.

Students apathy, of course, is still quite a serious issue. Having been a resident advisor for several quarters now, I sincerely know just how rampant it is. Possibly this could be alleviated, at least partially, by increased interaction between the senate and the Residence Hall Association governments.

Finally, I must address the issue of districting. I don't believe it's necessary. I really don't think one could term on-campus students, fraternities/sororities, etc., special interest groups that require specialized representation; they're all members of ASMSU and I believe most senators, in spite of their origins, will fairly represent all students and will listen to any particular student concern. I don't believe that any significant differences exist in budget decisions, decisions in general, representation, etc. between greek, and on- and off-campus senators.

1. Dealing with student apathy
2. Evaluation of user fees for ASMSU programs
3. Districting of ASMSU Senate
4. Stipend review for ASMSU positions
5. Increased lighting on campus
6. Evaluation of computer fee
7. Development of faculty and course evaluations
8. Increased student activity fee

I believe the number one issue facing ASMSU and MSU in general is overall student apathy. This is especially relevant in this election where only fourteen people are competing for twelve senate seats, and less than 20% of the students voted in last week's presidential primary. Unfortunately, I'm not sure that the problem can be combated on a large scale, as it seems to be a conscious effort on the part of many students to avoid involvement and information on many campus issues despite KGLT, Exponent, and poster exposure. The informational and senate involvement programs being proposed by the executive candidates are a definite step in the right direction, but no miracles should be expected.

I strongly oppose any attempt to raise the ASMSU activity fee. Many of the programs currently offered just do not have a high enough usage rate to justify more money. Long before fees are raised, the senate and the students must consider raising user fees on many of the programs, such as intramurals, so that the students are not disproportionately subsidizing those who actually use them.

On the subject of fees, I continue to oppose the proposed MontPIRG funding system. I don't believe that just anyone who can collect a majority of student signatures should be allowed to use MSU as a revenue agent, least of all by using the negative check-off system. This system preys on the aforementioned student apathy to collect funds, rather than reliance on active supporters. There is a difference between MontPIRG saying "We have a majority of student supporters" and "A majority of the students do not oppose us."

If MontPIRG is established, there should be good communication between the ASMSU lobbying force and MontPIRG to prevent redundancy of efforts. But if the slightest conflict arises, MontPIRG must take a back seat to the ASMSU interests. Not only is ASMSU the most established group, but they more directly represent issues of specific interest to students.

Finally, I am very interested in representing the students of MSU on the ASMSU Senate. I won't compromise by beliefs to jump on a bandwagon, but neither will I close my mind to any opposing views. I would appreciate your vote tomorrow.

1. Increased student activity fee
2. Increased lighting on campus
3. Evaluation of user fees for ASMSU programs
4. Stipend review for ASMSU positions
5. Dealing with student apathy
6. Development of faculty and course evaluations
7. Evaluation of computer fee
8. Districting of ASMSU Senate

During my high school years, I was very involved in student government. I feel this has given me a good background for dealing with ASMSU matters. I am currently a sophomore majoring in accounting. I have a cumulative GPA of 3.67. With a business background, I feel I am well qualified for a senate position.

I am one hundred percent for increased lighting on campus, but I do feel that it should not be totally funded by ASMSU. I oppose an increase in the student activity fee. I feel that with better management the current funding will be sufficient. I also oppose and increase of user fees for ASMSU programs. The current fees are fine. In regard to stipend review for ASMSU positions, I believe that they are adequate at the present time.

I feel that the current issue of districting is not really a campaign issue since the students will also be voting on it on Wednesday. However, I oppose districting for various reasons. Mainly, I feel it would put a burden on competition and although it would seem to represent more fairly, we would not be getting the most qualified people for the jobs. As a result it may turn into a popularity contest. I do hope for an increase in student involvement. It was sad to see that only about 1600 students voted in the primary. I would like to remind everyone to go to the polls on Wed. April 25 and vote. I would appreciate your vote.

Deborah Coax

1. Dealing with student apathy
2. Dealing with student apathy
3. Development of faculty and course evaluations
4. Increased lighting on campus
5. Stipend review for ASMSU positions
6. OTHER: MontPIRG
7. OTHER: Transportation
8. Evaluation of user fees for ASMSU programs
9. Evaluation of computer fee
10. Increased student activity fee

Much of the apathy regarding ASMSU stems directly from a lack of knowledge - who the senators are, what the senate does, when the senatorial meetings take place, and what those meetings cover.

The first step towards getting the students involved should be to inform them about the senate, and not just with "picture posters" hung before and election. A positive step in this direction would be a published senate agenda, and more informational output to students before issues are decided. Senators cannot just sit in the ASMSU offices and wonder why the students at MSU are not "involved".

Districting of this campus is something else that I have and will continue to actively support. The senate of MSU should be equally represen-

tative of all the students - especially if it wants these students to take an active interest in MSU affairs.

I would also like to see faculty and course evaluation information available to students. Perhaps a compilation of the familiar evaluation forms could be provided. Then, not only would professors and courses that deserve recognition receive it, but any problems would be readily and publicly made apparent. I definitely feel that this would assist in the general betterment of education on this campus.

Furthermore, I firmly support Sam Korsmoe's proposals concerning a transportation system for Bozeman. This is definitely a subject worth examining and one form which MSU students could really benefit.

Finally, I feel that the establishment of a MontPIRG chapter at MSU would be a real asset. MontPIRG and ASMSU work in different areas. With a positive ASMSU/MontPIRG commitment to communications, I see nothing but benefits in the organization of a strong students consumer oriented group.

Donald Abbe

1. Dealing with student apathy
2. Increased student activity fee
3. Districting of ASMSU Senate
4. Increased lighting on campus

Executive candidate responses

Our surveys for the executive office candidates (president and vice president) were designed somewhat like those for the senate candidates with only a few variations.

Because of the importance of the executive positions, the editorial board felt it important to give these candidates more room (750 words instead of 300 words) to explain themselves and their platform. Along with that expanded space, we gave them more freedom in the setting of priorities.

Since all of the executive candi-

Sam Korsmoe, President Mary Carol Mehrens, Vice President

The most important attribute ASMSU executive officers should possess is legislative experience. Having spent the entire winter quarter (1983) working in the state legislature, we have the experience necessary to accomplish many positive goals for ASMSU.

First, MSU is in dire need of a new engineering building. MSU has long been recognized as one of the best engineering schools in the country and it should have the facilities which match its accomplishments.

Having witnessed first-hand ASMSU's successful lobbying effort for the greenhouse, we know the necessary process to obtain the engineering building.

Secondly, last year the legislature mandated a \$54 per year increase in our tuition. This year, ASMSU must lobby effectively to keep our tuition to a reasonable level. With an ever increasing state budget and limited revenues, higher education could be severely cut unless ASMSU's executive officers take the initiative to strongly fight against an increase.

Finally, work study is a source of revenue many students rely on to make it through school. Last session we received work study only after an intense lobbying effort.

(continued on page 4)

5. Evaluation of computer fee
6. Evaluation of user fees for ASMSU programs
7. Stipend review for ASMSU positions
8. Development of faculty and course evaluations

My name is Don Abbe and I'm running for senate in the upcoming ASMSU elections on April 25th. The Exponent has given me a list of issues and has asked me to both prioritize and discuss those issues. First, I would like to say that all the issues are important and secondly, you cannot adequately discuss all the issues in less than 300 words, which was also a condition for this article. Because of the limited amount of space, I will only be able to cover the first four issues.

Dealing with student apathy: You hear it all the time, why ask the students, they don't care anyway. I think this is far from the truth. It's more accurate to say the students aren't informed. It's hard to form a strong opinion on an issue, when you haven't gotten all the facts. This, I feel, is the responsibility of the executive officers and the senate of ASMSU. A well informed student is more likely to vote.

Increase student activity fee: Any increase in the student activity fee should always be voted on by the students. I feel the role of the ASMSU officers in this situation is that of getting the information to the

students. Once the students are aware of the implications of either accepting or rejecting the fee increase, they can inform the senate, via the voting process, of their decision. Here again the underlying factor being communication between ASMSU officers and the students they represent.

Districting of ASMSU: Districting is widely accepted at levels of local, state and federal governments. The real issue then, is that of coming up with an equitable way of districting, not whether or not we should district at all. Here, as in the increase in student activity fees, the student should be given the chance of either accepting or rejecting it.

Increase lighting on campus: I feel that the lighting on campus is not adequate. It limits the number of students using the campus during evening hours. Although I applaud the Fang escort service, they can not cover every dark walkway or parking lot. I feel if ASMSU, along with other campus organizations, approach the administration with this problem, some coreactive action will happen.

Thank-you for taking the time to get to know your candidates better and please exercise your right to vote on April 25th.

dates are stressing the importance of a good lobbying effort for the next legislative session, we felt it necessary to have them specify and prioritize three particular issues they see as important to MSU students, rather than to just letting it be said, "I feel we need a strong lobbying effort..."

Also, with the new constitution the students passed last fall, the next ASMSU President will be the first to enjoy a fixed President's Fund (1% of revenues or approx. \$5,000). Since this new president will be setting an example on how the fund will be used in the future, we felt it neces-

sary for students to know how the next president plans to use this new privilege.

In conclusion, we asked the candidates to list and prioritize three other issues that they plan to address as president and vice president, giving their reasons for citing them and prioritizing them as they did.

We hope this new approach to our election issue will help our readers in making a decision in tomorrow's election. Remember to VOTE!

Diane Hill, President Terry Hamburg, Vice President

We'd like to begin by thanking everyone who supported us in the last election. In deciding to run for ASMSU President and Vice President, we put a great deal of importance on the upcoming legislative session. Some high priority issues for us include the following:

1) We'll fight to keep tuition as low as possible in order that all students are able to afford the quality education that MSU has to offer.

2) There are six line items in the university budget. The instructional portion is the most important line item to the student lobbying effort. The amount of instructional funding will determine the size of classes, whether MSU will attract quality faculty, and may increase the one-to-one contact between student and instructor that is so important to higher education.

3) We are currently working to get the Engineering and Physical Sciences Complex on the Governor's Long-Range Building Plan. Funding for the complex will certainly be an integral part of our legislative drive. The complex is of importance to MSU in order to increase available classroom and laboratory space not only in the fields of engineering and physical sciences, but also in

(continued on page 4)

Students submit letters of endorsement for election

To the Editor:

Is it worth it to the students of MSU to pass districting and elect Sam Korsmoe to ASMSU? If it is, vote for him and the proposal. If not, listen. First of all, I see that districting will hurt, if not kill, communications between the organizations at MSU. When RHA first approached ASMSU for a restructuring of ASMSU, we had the idea that it would improve communications between ASMSU, the Greek society and RHA. As I see it now, this districting idea will divide MSU more than it is now. If we get four districts, the ASMSU Senate will be posturing for a showdown. They do not have to be against each other.

I also see this districting proposal breaking the unity of each district. The reason I see is that if Roskie or AGR had their respective senators in their residences, the rest of the people would feel left out and resentful of that group because they had access and the rest did not.

Greek society doesn't have a good grasp on what RHA does nor what is happening in the halls. This goes the same way for the students in the halls and their views on Greek life. There is a communication gap between RHA and IFC and it is not going to be solved on the Senate floor, it is going to take more personal diplomacy.

As for Sam, my vote is for Diane Hill. Graham Gilchrist

To the Editor:

I am writing to express my strong support for Diane Hill's effort to become ASMSU President. Her commitment and hard work as a student senator and President Pro-Tempore of the ASMSU Senate has been an example other senators would do well to follow. In addition, Diane has never maintained a wishy-washy stance on any student issue, but rather has always taken a firm position on issues of concern to students. Her steadfast opposition to the proposed fee increase was just one example of her leadership.

As a former ASMSU legislative lobbyist, I would also state that Diane's experience as the governor's intern and her efforts during the last legislative session will make her a quality student representative for the upcoming legislature. Stand behind this candidate — she's a real worker!

Dennis Wagner

To the Editor:

This year our student government needs strong leaders who will professionally represent MSU at the state legislative session. I support Diane Hill and Terry Hamburg, candidates for ASMSU President and Vice President, to be these leaders. Diane has served ASMSU as

Senate Pro Tempore and Budget Committee member. I have worked with Diane on organizing MSU Day of Student Recognition and the "ASK US" Information Center. She is reliable, assertive, confident, knowledgeable about ASMSU and the campus, and possesses the sophistication necessary to professionally represent MSU at the legislative session.

I have also worked with Terry Hamburg as a 1983-84 Orientation Leader, where Terry displayed his talents as a strong leader. Terry has the ability to work with all personality types, listen to their ideas, develop a plan of action, and motivate people to be involved in the completion of the project. Terry has the leadership characteristics we all desire — when Terry speaks, people listen. As a non-traditional student returning to college after several years in the professional world, Terry is serious about his education and dedicated to getting involved at MSU.

Diane and Terry are determined to increase the quality of student representation on ASMSU actions. They plan to re-establish communications with previously silent organizations and establish a liaison system that will provide a voice for unrepresented sectors of campus life.

I encourage everyone to weigh the issues presented by the presidential/

vice presidential candidates and select the candidates offering MSU strong leadership and excellent representation in Helena — Hill and Hamburg.

Kim Anderson

To the Editor:

It's election time again and I feel a compelling instinct to place my support behind the mature and efficient team of Diane Hill and Terry Hamburg for the office of ASMSU President and Vice President.

I am supporting Diane and Terry not only because of their experience, but because of the energy which flows from their unmistakable excitement and dedication. Diane and Terry aren't submerging themselves in issues the students need to decide upon (like districting). However, they will support and carry out the concerns and proposals of the students in their effort to improve ASMSU.

Diane is currently an ASMSU Senator and because of her enthusiasm and willingness to work, she was elected to the office of President Pro Tempore by her colleagues. She has also served as an intern to the governor. Terry, on the other hand, has also been involved as a senator and had served as a professional marketing consultant. He has the workable knowledge to balance a superior

combination.

What MSU needs is a commitment to a strong lobbying effort, an improved ASMSU without cost increases, and involvement from students from all university groups. What MSU needs is Diane and Terry.

Dan Nygaard

To the Editor:

Typical of most students we usually don't take an active part in ASMSU politics. However, we would like to express our strong support for Diane Hill in the upcoming election for President. Hill has encouraged student involvement in all aspects of ASMSU. She communicates well with people and is committed to increased participation in ASMSU. Her experience and leadership abilities are a strong asset to ASMSU right now as she serves in the capacity of President Pro Tempore of the senate and hopefully in the future as ASMSU President.

Diane Hill has always kept the student interests as her top priority and views each issue objectively. Once again, we would urge you to vote for Diane Hill on April 25th — to ensure your best representation.

John LeMieux
Dwane Dighans
Clint Hill

Korsmoe and Mehrens discuss their campaign platform

(continued from page 3)

This coming session, we would like to see work study funded at an even higher level. To effectively accomplish this, executive officers must know the legislative process. Without such knowledge, MSU could lose its work study revenue. This would be extremely detrimental to many students.

Under the new constitution passed last fall, the president will receive a discretionary fund of about \$5,000. We plan to use the fund, in part, to finance our new Student Concerns Committee. Within ASMSU there is currently no strong vehicle to address issues that concern students, such as inadequate lighting, alcohol awareness (i.e. DUI legislation) and sexual assault, just to name a few. With the President's Fund, we would publish information and/or promote awareness of these issues and potential solutions. Unless ASMSU faces these issues head-on, they will remain and continue to plague those effected students. We believe ASMSU should do everything in its power to alleviate those concerns. We would also publish and distribute surveys to the student body on a regular basis so we can receive feedback on what the students would like to see from ASMSU.

Our biggest goal for next year is to determine the potential for a transportation system for ASMSU. We will research a system for ASMSU and also research a joint effort between ASMSU and the city of Bozeman. We believe a transit system would encompass many other issues, such as the parking problem and poor city streets. It would be a fantastic public relations move on ASM-

SU's behalf. We believe this could be one reason for the apparent lack of knowledge and/or apathy about ASMSU.

Such an idea is not new. For example, the city of Fort Collins and the Associated Students of Colorado State University have combined their money and energy to develop an excellent transportation system. Currently, their system has 13 buses and all CSU students ride for free. The cost to the CSU students is \$3/semester or the equivalent of \$2/quarter for ASMSU.

Hill and Hamburg discuss their campaign issues

(continued from page 3)

other curriculums as well. A new engineering and physical sciences building will go a long way towards improving the quality of education at MSU.

It is difficult to limit the legislative issues to three because all issues concerning higher education are of importance to the students of MSU, (e.g. Work Study, Computer Space, and Financial Aid). These issues all deserve the attention of ASMSU.

We plan to use the President's Fund to better inform the students about ASMSU. Surveys would be performed to evaluate usage of programs, past histories of programs would be reviewed, and senators and members of various committees would undergo orientation to prepare them to better market and inform students of ASMSU through the use of visual presentations to student groups.

We intend to use part of the discretionary fund to involve students in the lobbying effort, (e.g. Student

communications network between ASMSU and MontPIRG. The end result will be two positive groups working to coordinate student needs — such an effort will be a first for MSU.

During the past three weeks of campaigning, we have been consistently questioned on districting. Districting is NOT part of our platform. We are the sponsors of the initiative because we felt the issue was too important to be decided upon by one body (i.e. senate). Therefore, we tabled in the SUB and

Lobby Day, the phone tree, correspondence costs, forums by state leaders, etc.). Involvement of students is important and aids in lobbying for higher education — for you!

Terry and I have opposed and will continue to oppose an activity fee increase. By reviewing records of programs and using proven methods of marketing, we feel we can improve ASMSU without an increase in costs to the students.

We are working to develop a liaison system to facilitate better communication between the senate and other student groups — those of RHA, IFC, Panhellenic Council, and Family Housing Advisory Council. Liaisons from these respective governing bodies will have a direct voice in ASMSU Senate affairs, and will have total access to all senate information. In addition, senators will go out to the various meetings on campus. We are firmly committed to having senators go to the students — we feel it is our job to listen to students in their environment, not

force them to come to the ASMSU offices in order to voice their concerns. Student involvement is critical!

Teamwork is a necessity for the offices of president and vice president. Terry and I work well together.

residence halls to receive enough signatures to put it on the ballot. Having received 829 signatures, the issue can now be voted on by EVERYONE, not just by 20 senators. We felt it was important to let the students decide.

In summary, determine for yourself what you want from ASMSU next year. It is your student government and we encourage you to determine its future. Please vote in tomorrow's elections!

We have legislative experience, professional marketing experience, and ASMSU experience to do a quality job for ASMSU. Please consider carefully the issues and the candidates; we would appreciate your vote!

REMEMBER
VOTE TOMORROW!
WEDNESDAY, APRIL 25th

At these locations

- *SUB BOOKSTORE
- *SUB CAFETERIA
- *RENNE LIBRARY
- *HANNON HALL
- *COLTER/PRYOR HALL
- *CULBERTSON/MULLAN HALL
- *HEDGES NORTH
- *HEDGES SOUTH

