

ASMSU cancels weekend concert

by Scott Peters

John Burgess

The Ozark Mountain Daredevils and Pure Prairie League concert has been cancelled—as of Wednesday only 84 tickets had been sold.

The concert was cancelled during an impromptu meeting consisting of the head of CEC; ASMSU President Amber Webb; ASMSU Vice-president Russ Crawford; and ASMSU Business Manager

Cindy Huck.

While much of the blame for the cancellation has been laid at Huck's feet, she says the decision was a group decision.

"I talked to past business managers, other people familiar with concerts (like Webb), and some business consultants," Huck said. "Ultimately the decision was mine, but both Amber and Russ stood behind me."

Huck estimated the concert could have lost approximately \$13,000 from the information available to her. The actual loss is still being negotiated by CEC. Huck felt students' money shouldn't be "thrown away."

Lee Paulsen, head of the Program Board, felt the CEC should have gone ahead with the concert.

"I mean, at least, they'd have something to show for

their money," Paulsen said. "Even with the loss we would have still been within our budget."

"CEC has been pretty bad about getting the word out about concerts this year, but this time around everything came together."

"Paulsen continued, "Then the volcano went off and everything shut down. Of course they didn't sell any tickets, there wasn't any place to buy them. We sell over half of them the day of the concert."

"All this is going to do is hurt our reputation even more," Paulsen said. "Although the other concerts were cancelled by the promoters, CEC is developing a reputation that they can't deliver on a big name concert. The committee is really disappointed—we finally get it together and with even less lead time than usual and now the concert is cancelled."

Huck said other considerations in deciding to cancel included a standard policy to have only promoter concerts in the Fieldhouse—which this one wasn't.

Huck also felt that even if CEC had stayed within their budget there wasn't any reason to waste the students' money on groups that have already been here.

Beth Olson, co-ordinator of student activities, says there is no policy for promoter run concerts.

"It's prudent to have and it's wiser to have a promoter," Olson said, "but it's not a standard policy."

CEC business manager John Myett says the decision was all Huck's.

"She looked at the situation and her decision was that we would lose less by cancelling," Myett said.

Myett said the breakeven point for the concert was right around 3,000 ticket sales.

"Promotionally," Myett said, "we lost right around \$1,500—including the Exponent. We are still negotiating what we have to pay the bands."

The concert was cancelled when Huck refused to sign the contract and so, according to Myett, the 50 percent clause may not apply.

"There's a right place for a promoter concert and there's a right place for a CEC concert," Myett said. "The only difference being the promoter would have paid and not ASMSU."

Myett did not want to speculate on whether or not the concert would have made money.

"What we are dealing with is CEC reputation," Myett said. "With CEC's damaged ticket sales it is possible that people were waiting until the last minute to buy tickets. They've had to deal with refunds before."

"CEC apologizes for the cancellation," Myett said. "I hope students will back us in the future."

Preregistration deadline extended

Since the University was closed last Tuesday, preregistration material will be collected through Tuesday, May 27, 1980. Continuing students who turn in material after this date will be responsible for the \$15.00 late fee. Students who have not preregistered are to obtain the necessary materials from their adviser.

1980-82 Catalogs are coming

The new catalogs will be out soon! All students currently enrolled are entitled to one copy of the 1980-82 Undergraduate Catalog. Catalogs will be handed out in the SUB South Lounge Thursday May 29 and Friday May 30 from 9:00 a.m. until 11:45 a.m. and from 1:15 p.m. until 4:30 p.m.

CURRENT VALID I.D.'S ARE REQUIRED

After this time, copies of the catalogs will be made available from the Registrar windows in Montana Hall.

msu exponent

Friday, May 23, 1980

Vol. 71, No. 51 An ASMSU Student Publication

Bozeman, Montana



When school was closed down on Tuesday Donna Pauvi, George Robson and Tia Nelson took advantage of the day off by riding their horses through a deserted campus.

Julie Evans Photo

Campus describes Church of Christ tactics

by Laurie Knox
Scott Riek

Editor's Note: This article is in reference to the campus Church of Christ-at MSU and does not necessarily reflect on the Church of Christ parish of Bozeman, Montana. This is the first part of a two part series. The Church of Christ will have a rebuttal in next Friday's paper.

Both my friend and I came to MSU from a small eastern Montana community and had difficulty at first adjusting to a large school. Often we confided in each other about the loneliness and fears we both felt.

Halfway through fall quarter we began to see less and less of each other. She had joined a campus religious group and was constantly trying to persuade me to join it.

Finally she told me over the phone that if I didn't join her group she would never speak to me again. When it came to this point, I was very concerned about her and tried to talk to her in person.

When I did get to see her, she had three "friends" with her who would not allow us to talk in private. All the time I was there these "friends" kept hassling me about my beliefs and how I was damned to hell because I did not attend their church. I finally gave up and left.

From that point on whenever I saw her on campus she always had one of her "friends" with her. They never seemed to leave her alone. I found out later that the group she had joined was the campus Church of Christ.

In a Gainsville Sun (May 1979) article Gene Dryer,

pastor of University Baptist Church in Gainsville, Florida, explained some of the tactics used.

"They teach their young prospects to denounce previous paths, religious beliefs and heritage and to publicly state that all other groups are hell-bound. They suffocate people with attention, attract a lot of insecure, lonely kids, then if the prospect tries to back off or even go to another church,

INSIDE

- Under stress?.....p.3
- Letters.....p.5
- Boho Babel.....p.12
- Aftermath.....p.14

they'll cut these prospects off to such an absolute degree that it has done terrible damage."

According to interviews conducted with students, campus pastors and resident hall supervisors these same tactics are being applied on the MSU campus.

A student who was involved in the campus Church of Christ and left with a great deal of difficulty said: "They were constantly dominating my time. We attended church for Bible study and services all Sunday morning then went back for services most of Sunday evening. We also had Soul Talks at least one night a week plus a big group meeting Friday evening. They never seemed to leave me alone. I had no time to myself!"

There has been a great deal
(Continued to page 4)

Guggenheim awards sculptor fellowship

by Ken Western
MSU News Service

Deborah Butterfield is a sculptor whose finest work may be realized through a year of research and experimentation supported by the John Simon Guggenheim Memorial Foundation.

An assistant professor of art at Montana State University, Butterfield is the sole Montana educator to be awarded a Guggenheim Fellowship for 1980 and one of only 276 in the U.S. and Canada.

"I was totally surprised,"

Butterfield said of her selection from among 3,000 applicants. "I don't think that it has really sunk in yet."

The prestigious fellowships are awarded on the basis of demonstrated accomplishment and strong potential. Grantees are relieved of their teaching duties for a year in order to concentrate on their work.

"It's an opportunity to make mistakes," Butterfield said, noting that she'll spend much of her time at MSU but

may also have a chance to visit China to study various aspects of sculpture.

Butterfield, 30, has built a national reputation with shows in such major art centers as New York City, San Francisco and Chicago. She is scheduled to exhibit her work this October in Jerusalem and next year in London and Cologne.

Butterfield's work reflects a love for horses and most of her pieces are full-size. Her work has become increasingly abstract, but observers agree that it is no less accessible to viewers whatever their background.

Butterfield uses such materials as wood and sticks, old fencing, steel and "things with linear patterns." Often mixed with these materials are mud, hay, glue and hog hair.

Listen to
KGLT radio
FM 92

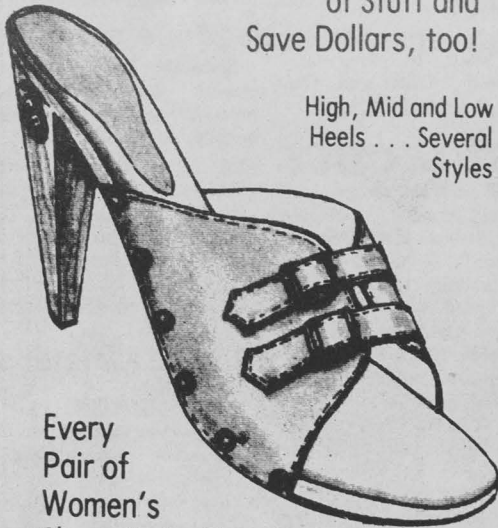
At the **Eagles Club**
Steak dinners every Saturday
through May **\$6.00**
Starts at **6:30**
16 oz. T-BONE
with all the trimmings

Live music Thursday, Friday, and Saturday
'MidNite Hour' Open Club

A MAY TIME SHOE SPECIAL

Pick a Perky Pair
of Stuff and
Save Dollars, too!

High, Mid and Low
Heels . . . Several
Styles



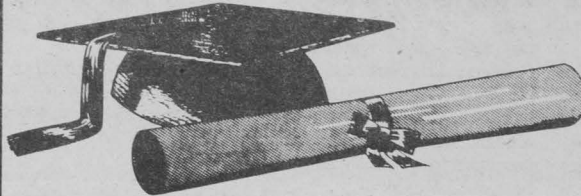
Every
Pair of
Women's
Shoes 'N Stuff Reduced to

\$25 THIS WEEK ONLY

Egbert's
BOOTS & SHOES
DOWNTOWN BOZEMAN • FREE PARKING



MSU Graduates!



**YOU'VE WORKED HARD.... AND WE
THINK YOU DESERVE A NEW CAR.**

Exclusively for MSU Graduates ...

... a very special car purchase and financing program that recognizes your achievements; Graduation and a Career Job Commitment, available only at J.C. Billion.



Here's how it works:

Select a new car or truck from stock, you'll receive immediate delivery. We'll arrange special low down payment financing. Regular monthly payments won't start until after you begin your new job. Come in to J.C. Billion and get the complete story today!

1919 W. Main

586-4575

J.C. BILLION INC.
OLDSMOBILE • PONTIAC • CADILLAC • GMC • DATSUN

OPEN MONDAY THRU FRIDAY 8-6, SATURDAY 8-5

UPINNEWS SUMMARY

Court refuses olympic reversal

A Federal Appeals Court has rejected a bid by 25 would-be Olympians who want to go to Moscow. The Court refused to order the U.S. Olympic Committee to overturn its decision to boycott the Moscow games.

U of W reports tremors

The University of Washington reports three small earthquakes shook Mount St. Helens early today and noise during the night indicated molten rock may be moving beneath the surface.

U.S. warns N. Koreans

The State Department issued an indirect but clear warning to communist North Korea today not to exploit the current civil strife in South Korea. A statement warned that Washington would react strongly to any external attempt to exploit the disorders.

Earlier, the Pentagon said the United States has agreed to a South Korean government request that some of its troops be released from the joint command to help control the disorders.

Gas expected to increase

Deputy Energy Secretary John Sawhill says gasoline prices could go up as much as eight cents a gallon in coming months. According to Sawhill the culprits this time are OPEC which recently raised crude prices about two-dollars a gallon and the U.S. government which is lifting controls on domestic oil prices.

Suffering from stress? Here are some tips

by MSU
Counseling Center

Spring, finals, graduation, changing your environment, saying goodbye to close friends, fear of poor grades.

Time when you may be questioning who you are and what life's all about. College students appear to have more pressures on them than their noncollege counterparts. You might not be aware that spring brings together a large number of stressors for college students, as the above list reflects.

A lot of people don't even know when they're under unusually high stress and also don't know how to cope with it effectively. A certain amount of stress is necessary and can be beneficial but it's important to know how to manage stress to keep it at a productive level.

Many people don't realize that pleasant as well as unpleasant events create stress. Graduation or the excitement of beginning a new job can bring as much stress as flunking school or losing a job. Any mixture of several intense life changes or situational pressures can demand physiological and psychological accommodation.

How can you tell when you're under stress?

Physically, you may notice that while under stress you neck, jaw or chest muscles are tense, you may have sweaty or cold hands and palms gastrointestinal difficulties, problems sleeping, may tire easily and experience frequent headaches.

Psychologically, stress can be identified by an inability to concentrate, increased irritability with tasks or friends, poor work and test

performance, and moderate to high anxiety.

Once you learn how you, personally, deal with and incorporate stress, the best time to intervene and short circuit the process is when you first begin experiencing a higher-than-normal stress level.

Here are some strategies and suggestions on how to live with and reduce stress:

1. **Work it off.** Physical exercise is a good way to reduce tension-both physical and mental. Take a walk, play tennis or racketball, swim or do some running.

2. **Talk it out.** Sharing worries with good friends will help to reduce some of the tension and possibly help you see another side to your problem. Talking helps put things in perspective.

3. **Take one thing at a time.** Things can get overwhelming if you try to do it all at once. Make a schedule of when you'll do certain things so that you have a plan of attack and put the most urgent work first. It's self-defeating to try to do it all at once.

4. **Be flexible.** If other people are creating the stress in your life, try to see their point of view. Stop having to be right and instead of fighting, allow yourself to let go of your point. However, if you are being "used" by others, learn to be more assertive so that you can better take care of yourself.

5. **Think about others.** Concentrating too much on yourself will at times contribute to your problem. Try getting your mind off yourself by helping a friend! (There's a good payoff in it, too!)

6. **Don't fight it.** Learn to

accept what you have no power to change. If you've already failed a midterm and are just barely hanging in there, don't brood over your grade. It won't help to worry about what you can't change and your energy can better be used to study for the final. If you find yourself thinking "I can't stand it", "I must", "I should" or "I need to," you're not thinking objectively. Changing your thoughts could reduce some of your self-imposed stress.

7. **Take care of yourself.** Play a little-as well as work. Get enough sleep and rest. Even though it seems there aren't enough hours in the day to get your work done, make sure to leave some time to restore the energy you're going to need for tomorrow.

8. **Relax.** Some short breaks between tense situations can help you cope with the immediate situation. Several deep breaths will drain some tension off; repeating to yourself words like "calm" or "relax" also can reduce tension.

Exams are an upcoming situation that can be very stress provoking. The following are tips provided from the Counseling Center's test anxiety program that might help you make this exam period less stressful and more successful.

1. Try to get an adequate amount of sleep the night before an exam.

2. Give yourself time in the morning to go through

your regular routine (e.g., shower, exercises, etc.) 3. Eat a nutritious breakfast and plan your strategy for studying and dealing with tension during the day.

4. Give yourself positive self statements (e.g., "you can do it", "just do your best") throughout the day. Avoid becoming your own worst enemy by talking to yourself in such a manner that you begin to doubt your own abilities. 5. **Do something** relaxing or pleasant for yourself right before the exam. Quit studying at least a half an hour before the test.

6. Avoid getting to class too early. Time before examinations is usually spent engaging in idle worry. 7. Be aware of your own signs of developing anxiety and use self-control strategies to keep tension at a manageable level. 8. Be prepared: Have the right books, sharpened pencils, pens, paper; also bring a watch to keep track of time.

9. Sit in the seat you occupy during regular class sessions unless you'll be easily

distracted there. If you feel you may be distracted, move to a more isolated location in the room.

10. Try to avoid anxious obsessive students before examinations. They'll only serve to make you more upset. 11. Don't cram directly before a test or study when anxious. Also, don't reopen books after entering the examination room. 12. Quickly look over the test and identify which questions are worth more points. Answer

(Continued to page 16)

Get the Printing YOU Need TODAY at **insty-prints**
CASH & CARRY - WHILE YOU WAIT

insty-prints

29 South Tracy
Bozeman, Mt.
586-7007

Live Country - Rock Music
by SWEETWATER
Friday and Saturday May 23, 24
Fine Food • Mixed Drinks • Beer
OASIS STEAK HOUSE • Manhattan

BLACK JACK
returns to the Molly
with a new name and
a new face. **KRAZY JACK**

You've loved them before and you'll love them again.
Don't miss em! Playing May 26th - 31st.

MOLEY BASHIN

Applications now being accepted for

ASMSU SENATE POSITION

Applications due May 29th
at 5:00 P.M.

Appointment will be made that evening

Stop by ASMSU office
for applications and information

Church of Christ

(Continued from page 1)
of controversy surrounding these tactics utilized by the MSU campus Church of Christ. Many people have termed the tactics used as being cult-like in nature.

In a statement released to the press Monday, March 12, 1979 by Jack Jennings, President, Gallatin County Ministerial Association and Wayne Snyder, President Park-Gallatin Association Evangelicals, a cult is characterized as using six techniques:

1. Sleep and dietary

deprivation. Make them so tired and worn down they can't think straight.

2. Brainwashing. Make them listen to hours of tapes, view hours of films, read stacks of approved pamphlets. Allow no other "negative" thoughts.

3. Blind subservience to authority. Revere the great leader and above all, obey the cult leadership. Do what you're told.

4. Cutting off from family and friends. Normal parent-child conflicts are exploited. "You don't need your family any more. You have a new family." Old ties of school, church and friends must be severed.

5. Monopolize their total time. No time any longer for

old friends, going to class or even reading the newspaper. Who needs outside influence? The cult has all a person could ever need. The group is what is important now, not the individual.

6. No negativity. Don't ask questions, just listen! We know what is best for you. Trust us. We will lead you into new truth. To question is to doubt our authority. Then we cannot help you.

From observation, interviews and the Gainesville article, it would seem that the Crossroads Church of Christ and the campus Church of Christ of MSU fulfill all but one of the characteristics.

Brainwashing - New members of the Church of Christ are given "approved"

pamphlets, tapes and books and told to study them extensively. Examples of such readings are "Your First 40 Days", "Developing Spiritual Relationships with the Body." Two tapes authored by Chuck Lucas, a leader of the Church of Christ are, "For the People Had a Mind to Work" and "Unless the Lord Builds the House."

Blind subservience to authority - While evidence on this is sketchy, the almost unquestioned following of Chuck Lucas by the members of the Crossroads Church of Christ has caused many to worry about such charismatic leadership exhibited by religious leaders in the past.

Cutting off from family and friends - There seems to be a push by members of the campus Church of Christ to cut off all ties with other people who don't belong to

the church. This is seen as a tactic to cut off outside information thus making the only information you receive from the church.

Monopolize their total time - As the one ex-campus Church of Christ member commented, "They never seemed to leave me alone. I had no time to myself."

No negativity - There is no room for questions or negativity in believing the campus Church of Christ way. Information is handed down through leaders of the Church of Christ. Bible passages are pointed out that may be used in various situations however little or no thought is given to the context in which the verse is given. According to the Gainesville article in an interview with Chuck Lucas, he was quoted as saying, their people are not interested in such things as context when they are studying the Bible.

25% DISCOUNT ON SUMMER RENT RATES FOR FURNISHED MOBILE HOMES

2 Bedroom	WAS \$ 195 - 240
	NOW \$ 145 - 180
3 Bedroom	WAS \$ 270 - 315
	NOW \$ 200 - 235

UTILITIES PAID, only a \$150 deposit required.

Located in Wagon Wheel Park, within walking distance to campus.

Available from end of Spring Quarter until Sept. 1st.

One month minimum rent period.

HOME LEASING, INC. - WAGON WHEEL PARK

CALL 586-2391

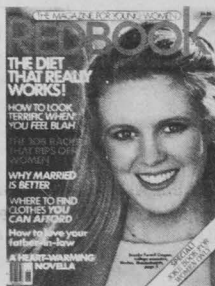
2219 W. COLLEGE

586-2678

[SOUTH OF BIG BOY RESTAURANT]

ATTENTION GRADUATES:

Before You Seek a Job Counselor, Be Sure to Read "Job Counseling: More Hype Than Help?" in JUNE REDBOOK



with a special update on "The Class of 1970"... Where are they now? PLUS Clothes to Take You From Campus to Career for Under \$50! AT ALL NEWSSTANDS NOW!

The MUSTARD SEED

by Peter Clark

United Methodist Campus Pastor

Well, by the looks of things Selective Service Registration for young men ages 19-20 is very nearly a reality. THE Congress is acting with much greater haste than usual. The only action faster was Ed Muskie's confirmation as Secretary of State a week ago.

There are a number of disturbing issues involved in this process which I think need examination. First this "pre-mobilization registration" would save only 4 days over a "post-mobilization registration" (waiting until the emergency occurred), would waste \$21.9 million and is not even favored by the selective Service System. A study done by the Executive branch, later laundered to two the Carter line, originally stated that draft registration should not be started:

"The post-mobilization option is by far the most cost effective, and least intrusive. Pre-mobilization is redundant and unnecessary."

The administration is obviously after something else, perhaps an image in the world of toughness toward Soviet aggression. Can you imagine how frightened that would have made our Nixon regime had the Russians gone through a similar process during our aggression in Vietnam, Laos and Cambodia? Some joke! Or maybe Carter is trying to appease the hawks in his own backyard so election to a 2nd term becomes a reality. To minimize backlash he's picked the most politically powerless

age group, its members being generally too young to have reached positions of power in business, unions or universities. How does it feel, 19 and 20 years olds, to have someone standing on your neck for re-election? If you feel like a pawn, you should, because you probably are.

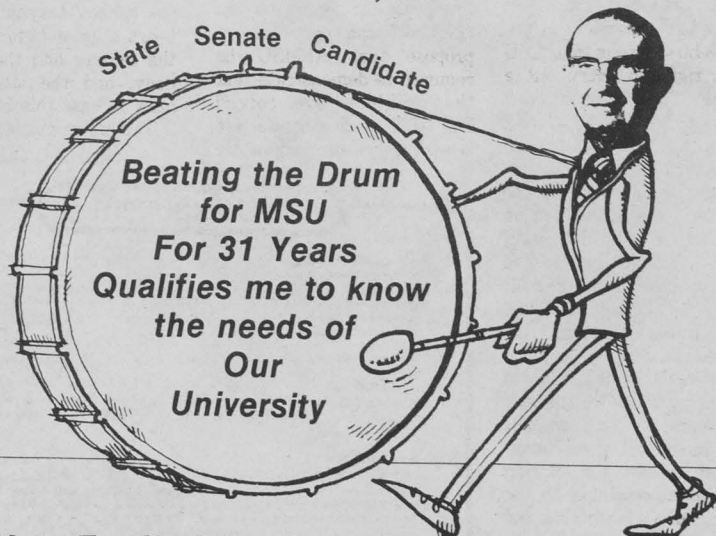
Finally, what's next after registration? Classification? The abuses of this are notorious-have been ever since the first draft. Usually it's the poor minority who shoulders the greatest load and consequently gets killed the most. That may not be of concern to most MSU students since few are poor or a minority. But we ought to be because it's unjust and injustice anywhere tears at the fabric of the entire society, wounding all in the long run. The prophet of the Old Testament laid on us a double obligation: to do justice and mercy, and not when it only effects us directly, but always.

And what do we hear about the Conscientious Objector classification? Reports are that the plan is to limit it severely to a few historic "peach Churches," meaning a devout Roman Catholic or United Presbyterian who feels moved by faith and conscience to passivism and non-violence in any situation either caves in and violates himself or goes to jail as a felon. Incidentally, anyone who fails to register for the draft is a felon too, punishable with up to 5 years in prison and a \$10,000 fine.

Well, this whole thing is a (Continued to page 16)

EDMUND P. SEDIVY, Sr.

State Senate Candidate



Beating the Drum for MSU For 31 Years Qualifies me to know the needs of Our University

Vote For 'Ed' For State Senate, Republican on June 3rd Primary.

Support Committee for Sedivy, c/o Robert G. Border, Treasurer 815 South Tracy, Bozeman, Montana 59715

SUBJECTIVELY SPEAKING

Letters to the Editor Big guerillas needed



Editor

All letters to the editor will be printed providing that they are typewritten and double-spaced, and they do not exceed 250 words. The Exponent reserves the right to edit for libel. Letters must be signed.

Will the real Webb please stand up

To the editor:
Last Friday, the Exponent published a letter from me regarding Amber Webb and the Spring Thaw. Ms. Webb called me to state that she did not have any conversations with me at any time regarding the Spring Thaw, or any complaints I might have had regarding it. In that letter, I intended to refer to the person in charge of last year's Spring Thaw. If, indeed, the person I talked to last year was NOT Ms. Webb, I sincerely apologize to Ms. Webb for misidentifying her.

The underlying problem has not been solved, however. Ms. Webb still feels that MSU has a right to carry out a Spring Thaw activity; a provisional right with which I wholeheartedly agree. However, that right has not yet been accompanied by the necessary responsibilities on the part of ASMSU; until those obligations are satisfied, I will still oppose it in any legal way available.

My initial concerns, expressed in writing and by telephone to the organizers of the Spring Thaw for the past two years, as well as this year, have still gone unanswered. While the Spring Thaw is entertaining to the participants, it is a bother and nuisance to many who do not wish to listen to the music. The organizers have an obligation to solve the noise pollution created by their attempts at a profit-making enterprise. If they can't solve the problem in the Stadium,

To the editor:
We are looking for a few good men and women to participate in an guerilla-style raid for the purpose of releasing the 50 American hostages in Iran.

The mission will require long hours of training in desolate desert locales, personal privations to develop toughness, a complete abstention of sexual activities, and real physical danger. The reward will be satisfaction in teaching those Muslims a well-deserved lesson, and the acclaim of your fellow countrymen. Residual benefits will be realized in terms of endorsements of breakfast cereals, commando paraphernalia for urban residents, and Ford Pintos.

In addition, participants can expect to appear on the Tonight Show, and serve as guest hosts on Real People.

Qualifications include some knowledge of street-fighting techniques. For this reason residents of Butte will receive preference. A background in making homemade bombs, repelling counter-offensives in city streets, and preaching anti-intellectualism is necessary.

For a look at the detailed operation plans, including a scale model of the entire city of Tehran, and an application form, please come to the ASMSU office in the SUB. Sorry, only work study students are eligible.

John Burgess
Nick Geranios

then they should move it somewhere else. It is up to them to provide solutions if they create the problems. If ASMSU cannot assure the neighbors that they will not be subjected to the day-long din produced by the Spring Thaw, I see no reason that it should be permitted to occur. The concert planned for the Fieldhouse on this coming Friday proves that a solution is available.

Ms. Webb feels that Spring Thaw should be issued the appropriate permits to operate, with the hope that the problems forced on the neighbors can be solved. I propose that ASMSU be required to demonstrate that the problems are solved BEFORE such permits are issued. Other businesses are

asked to do this regarding their potential pollution; why should Spring Thaw be exempt, simply because they can't make a profit otherwise—that is part of the cost of doing business.

The Exponent quoted Ms. Webb as expressing disgust at the City of Bozeman; she opined that because MSU provides so much for Bozeman, the student body somehow deserved community support. I still believe that this is an arrogant attitude. While some merchants in Bozeman profit from MSU, the general taxpaying public bears a great burden due to the campus and the student body, and the students do little to ease this burden.

The university is only part

(Continued to page 16)



Get your heads out of the books

by Steve Hickman

Isn't student apathy wonderful?

You know what apathy is don't you? That's when you decide that an hour at lunchtime isn't long enough to allow you time to vote, or that it's too much trouble to write a short letter to your Congressman or university president about an issue affecting your education.

Apathy has done wonders for other college campuses—look at the University of Montana for instance. You say you don't see anything in Missoula except a ghost town where the University used to be? Don't let the atmosphere fool you. After a decade of post-60's lethargy the Griz is preparing to take advantage of your apathy towards MSU.

"How's that?" you ask. Well remember the Film & TV building controversy? It's still here. Contrary to popular belief it has not been settled in MSU's favor. Location of the building will be decided in the Legislature next winter, and the U of M is planning a big fight for it.

Film & TV is a valuable program at MSU and if all or part of it is snatched up by the U of M, all students will feel the effects, either directly through the loss of numerous services provided by the Film & TV Department, or indirectly if this move prompts a trend towards more departments (like Social Work or Theatre) being axed when MSU students are apathetic enough not to support them.

I would hope that MSU students don't want their university to go the way of that nearly extinct beast known as the U of M, and will fight for the quality of their own education. If you are not apathetic and wish to help in the fight for the building in some way, contact the Film & TV Department—they would greatly appreciate your help. If you would rather prove that you are not apathetic in some other way, ASMSU has a lot of openings on the various committees and in all of the individual activities that it sponsors. Getting involved in the university in some other way than as a student is all that it takes to cure a case of crippling apathy.

Vista needs help

To the editor:

We need your help. Today, more than ever, Peace Corps and VISTA (Volunteers In Service to America) volunteers are needed. The developing nations are requesting more than 2,000 new Peace Corps volunteers for programs that begin between June and September. The VISTA program is looking for at least 500 new volunteers for assignments throughout the United States.

Many of your readers possess the skills that are essential for this development effort. We presently have requests for individuals who have an interest in upgrading the health, nutrition, sanitation, farming, and construction of 60 countries. The need is there, and

through your efforts we may be able to inform the public about these opportunities.

We seek men and women, minorities and elderly, farmers and blue collar workers—anyone committed to helping the disadvantaged and willing

Sculpture is an eyesore

To the editor:

The new piece of artwork or the statue that has been erected in front of the S.U.B. is an eyesore. Any normal human can tell that it's structure and color are not suitable for it's location. The person or persons responsible for it's design and color have done to artwork what Hitler did to the Jews.

Brian Wiley
C.E.T.

MSU Exponent

editor	Nancy Lee Espelin McGee	managing editor	Shaun Doig
news editor	John Burgess	sports editor	Mark Beatty
photo editor	Donna Zook	assistant photo editor	Julie Evans
staff writer	Scott Peters	darkroom tech	Alan Thometz
writers	Julie Fletcher Michael Johnson	photographers	John Vance Robin Brown Bob Doernbach
			Phillip Milne Frank Sheridan Chuck Day
			Jay Littlewolf Steve Hickman Ron Dauenhauer
layout assistant			Randy Boschec
copy editor			Candy Atkinson
proofreaders			Ginger Hula
business manager			Tony Naturale
assistant business manager			Terri Bennett Mark Beatty
ad salespeople			Bernie Koenig Sue Setterquist Frank Jurenka

The Exponent is an independent, student written and student managed newspaper at Montana State University, Bozeman. The opinions expressed herein are not necessarily those of the university or the student body. Published twice weekly except holidays and final week during the school year by the Associated Students of Montana State University. Known office of publication: The Exponent, Student Union Building, Montana State University, Bozeman, MT 59717. Second class postage paid at Bozeman, MT. By mail per year \$7.50.

Peace rally, letters revive old memories

LeRoy Schmitz
The May 2nd peace rally along with the ensuing letters to the Exponent and some of the poems in the Jabberwocky, bring back many memories of a time when I was feeling the same frustration, bitterness, and sometimes despair being expressed today. I would like to share a poem I wrote in 1976 and follow it with some comments about things I did not consider when I wrote it

and which have not been brought up yet here. The "fuel" for the poem came from 4 years in the Marine Corps (from '70-'74), Watergate, and all the class reunions various high schools held in 1976.

The title is: **The Bells of Truth Toll for Their Names** (A Tribute to the Silent Minority)

A dusty book of unspoken names,

frozen smiles on plastic faces; Our brothers and our friends, staring out of blood-stained pages. They won't make the next reunion and there's noone to take their places.

For some the memories are fading, all the headlines are gone; Only a chapter in the history books, a war that lingered on; Just a few names with a couple of dates carved into pieces of stone.

But for those who lost their brothers, life will never be the same; A faded photograph, an unfinished dream, nothing else remains. Listen and you can hear The Bells of Truth toll for their names.

You big executives and bankers, You'd like to control this land. But little do you care, you don't seem to understand That now you've got dried blood mixed with the green ink-stains on your hands. And you bought-and-paid for politicians in your offices you hid. You self-righteous hypocrites,

comfortable in you honor and your pride. How many of your sons were among those who died?

There are still so many others dying in far-away lands, Lying bleeding in the streets with American guns in their hands. Must this be the world we live in? Are we afraid to take a stand?

So listen all you people to what we have to say. Please don't close your eyes, don't turn your heads away. They're trying to take our freedom and make the world their slave.

One of the things I did not consider back then was that the military, the government, big business, and the big banks are not just non-personal institutions sitting out there threatening me and my lifestyle. They may seem like it and may function like it at times, but under closer examination I find that they are made up of people no better and no worse than myself.

I am not making excuses for any wrong doings an institution may be guilty of. But it is an insufficient analysis of the situation to stop there and say "There is our

problem." I believe the problem is primarily in the people who make up the institution and not necessarily in the institution itself. A suggested solution might be to just replace the "bad" people with "good" people; people who share our way of thinking. But ask yourself this question: "If I was in a position of power in one of those institutions, would I do things much differently?" Many of you will probably answer, as I would have in '76, with a resounding "YES". A simple way to test the truth of that answer is to ask yourself another question: "How well am I living up to the moral standards I have chosen to live my life by?" Any thing less than 100 percent is not good enough. I, for one, was not even close to 100 percent in '76 even though from 1968, when I graduated from high school, to 1977, when I became a Christian, my standards had changed many times.

The whole situation is a variation of the theme, "Do as I say and not as I do." Only this time we are on the delivering end. This statement was answered in the 60's and is still being answered today by a line from a protest song some of you may remember: "If he can't run his own life, I'll be damned if he'll run mine." This line is echoing through the minds of children against their parents, high school students against their teachers, and people against their government representatives. This is why I said anything less than 100 percent living by our moral standards is not good enough. Do you trust someone with your car if you know he is a notoriously reckless driver? Do we really expect people to trust us with their lives if we cannot run our own?

The real problem appears to be much deeper than people doing wrong things. I think a careful look at psychology and philosophy in light of history will show this. There is not only something wrong with people's actions, there is something wrong with people.



Where am I suppose to park?

LOST HIGHWAY BAND

AT Gallatin Gateway Inn

MAY 23, 24, 25
9:30 - 1:30 \$1.00 Ticket

Jam Session starting Sunday 3:00 p.m.
Musicians welcome.

INTERESTED IN RIVER FLOATING OR HIKING?

If so, you will be interested in these two new guide books.

THE HIKER'S GUIDE TO MONTANA

Bill Schneider
Paperback, 224 pp.

\$6.95

Features hikes throughout Montana—both for beginning and experienced hikers. Heavily illustrated with 80 topographic maps.



THE FLOATER'S GUIDE TO MONTANA

Hank Fischer
Paperback, 160 pp.

\$5.95

An introduction to 26 of Montana's most popular floating streams including access points, hazards, fishing tips and historical tidbits. Heavily illustrated with 26 maps.



Send checks—including 75 cents per book for Postage and handling—to Falcon Press, P.O. Box 279, Billings, Mt. 59103.

JEAN SALE



SUMMER JEANS, PANTS AND SHORTS WITH TOPS TO MATCH.

20% off

Check Our 1/2 Price Racks

Village Casuals
1009 W. College
Bozeman, MT. 59715

NEWS...

KGLT is a non-commercial educational FM broadcast facility licensed to Montana State University, owned and operated by the Associated Students of Montana State University. KGLT receives funding through ASMSU from student activities fees, and also from local merchants and supporters in the form of general contributions. KGLT originates programming from studios located in the basement of the Student Union Building on the campus. Our transmitter is located 2 miles East of Bozeman on Beacon Hill. KGLT broadcasts with an effective radiated power of 2000 watts in stereo at an assigned frequency of 91.9 Megahertz on the FM radio dial.

KGLT is an affiliate of the National Public Radio Network, the Broadcasting Foundation of America, and

the Longhorn Radio Network. KGLT is also served by United Press International, and the Christian Science Monitor Radio News Service, and is a member in good standing of the Intercollegiate Broadcasting System and the Montana Broadcasters Association.

KGLT provides musical and educational programming for the students and faculty of MSU, the people of Bozeman, and the inhabitants of the Gallatin Valley. Programs announced in this guide are subject to change without notice to permit broadcast of special public interest programs or because of problems beyond our control. However, every effort will be made to ensure that broadcast information is accurately reflected in this program guide.



NEWS AT A GLANCE & WEATHER At 7:30 am, 9:00am, 4:00pm, 8:00pm, 10:00pm, and 12:00 midnight daily.

NOON NEWS Including world, financial and Montana news with sports and weather and MSU events. Monday through Friday.

6:00 EVENING NEWS Including world, financial and Montana news with the Christian Science Monitor News Service, sports and weather and the farm report, MSU news

STARDATE At 10:30 p.m. Produced by the University of Texas McDonald Observatory, this series of 2-minute programs is designed to foster a sense of excitement and enthusiasm about the intricate and mysterious universe in which we live.

LISTENERS' PERSONALS A community service relaying messages of Lost & Found, Rides Wanted, Riders Needed, and various other interests. No money-related items, please. Just call the station for assistance. 7:25am, 12:25pm, 6:25pm.

EXECUTIVE STAFF

Spring 1980

General Manager	Jerry Ball
Chief Engineer	Mark Jurenka
Chief Announcer	Brad Dewalt
Music Director	Lamar Conn
News Director	Franni Turean
Assistant News Director	Andy Millard
Production Coordinator	Mark Eckert
Assistant Production Coordinator	Paul Stark
Program Director	Jennifer Ball
Insights and Interests	
Producer	Ann Barnaby
Secretary	Loretta Gardella
Assistant Chief Engineer	Gregg Norton

KGLT UNDERWRITERS

- Artifacts Galleries Ltd.
- Langohr's Flowerland
- Sound Pro
- Leaf & Bean, Coffee, Tea, and Spice
- Specialty Shop
- Madison Lumber Co. of Ennis
- Cactus Records & Tapes
- Bangtail Bicycle Shop
- Intermountain Opera Association
- Bozeman Symphony Society
- Budget Tapes & Records

SUNDAY	MONDAY	TUESDAY	WEDNESDAY	THURSDAY	FRIDAY	SATURDAY
7:00 a.m.-10:00 a.m. Larry J. Baker	6:00 a.m.-10:00 a.m. Brian Brophy Soul & rhythm & blues	6:00-10:00 a.m. Martinelli Jazz	6:00-10:00 a.m. Brad Halleburg Mellow morning moods	6:00-10:00 a.m. Rand Frahm Folk & jazz & rock	6:00-10:00 a.m. J.B. Dewalt	6:00-10:00 a.m. Bill Klenn Folk & rock & blues
7:25 News & Weather						
7:25 - 7:35 NEWS AT A GLANCE & WEATHER, LISTENERS' PERSONALS, MSU EVENTS CALENDAR						
9:30 a.m.-11:30 a.m. Chicago Symphony	10:00 a.m.-10:15 a.m. Agriculture Experience Agriculture U.S.A.	10:00-10:30 a.m. Consider the Alternatives	10:00-10:30 a.m. Overseas Assignment	10:00-10:15 a.m. Focus On Health	10:00-10:30 a.m. Museum News of the Air	10:00-10:30 a.m. Kidstuff
9:00-9:03 A.M. NEWS AT A GLANCE & WEATHER						
10:00 a.m.-2:00 p.m. Andy Millard Romanian Classical Music	10:00 a.m.-2:00 p.m. Tim Gardner	10:00 a.m.-2:00 p.m. Gary Grunwald Jazz, folk, rock, bluegrass	10:00 a.m.-2:00 p.m. Bryan Severns You name it, I play it.	10:00 a.m.-2:00 p.m. Brady Wiseman Jazzola, r & r, blues	10:00 a.m.-2:00 p.m. Allan Park Rock-n-roll wake up	10:00-2:00 p.m. Jim Roskos
12:00-12:03 NEWS AT A GLANCE						
12:00 - 12:10 P.M. FULL NEWS						
12:10-12:25 p.m. Japanese Press Review	12:10-12:25 p.m. Arab Press Review	12:10-12:25 p.m. Israel Press Review	12:10-12:25 p.m. Last Week at the U.N.	12:10-12:25 p.m. British Press Review	2:00-6:00 p.m. Jim Marchwick	
12:25-12:30 P.M. LISTENERS' PERSONALS						
2:00-6:00 p.m. Tom Pascale The jazz show	2:00-6:00 p.m. Franni Turean Light afternoon tunes	2:00-6:00 p.m. Apprentice Show	2:00-6:00 p.m. Michael Billets Country, folk, rock	2:00-6:00 p.m. Jerry Ball New releases	2:00-6:00 p.m. Jon Von Ohlsen Hard rock	1:00-3:00 p.m. Intermountain Opera Folk Festival U.S.A.
2:00-2:15 p.m. AERO Environmental Issues	2:00-2:25 p.m. The Human Condition	2:00-2:30 p.m. International Literary Report	2:00-2:30 p.m. Views & Reviews	2:00-2:30 p.m. Performing Arts Profile		
4:00-4:03 P.M. NEWS AT A GLANCE & WEATHER						
6:00-6:30 PM FULL NEWS & WEATHER, LISTENERS' PERSONALS,						
6:00-10:00 p.m. Michael T. Seolik Classical	6:00-10:00 p.m. Rose Jaffe	6:00-10:00 p.m. Dead-Air Norton Sounds of Silence	6:00-10:00 p.m. Lamar Conn Souling rock	6:00-10:00 p.m. Martha Hodder	6:00-7:00 p.m. Voices In the Wind	
6:00-10:00 p.m. Ray Pratt The blues tradition	6:30-7:00 p.m. Jazz Revisited	6:30-7:00 p.m. Thirsty Ear Notes for a Listener	6:30-7:00 p.m. Insights & Interests	6:30-7:00 p.m. Montana Woman	6:00-10:00 p.m. Ann Barnaby The drone	
9:30-10:00 p.m. Stars & Stuff	9:30-10:30 p.m. Midnight Special	10:03-10:30 p.m. Old Time Radio	10:03-10:20 p.m. Superman	9:30-10:30 p.m. Earplay	9:30-10:15 p.m. Album of the Week	9:30-10:15 p.m. Album Premiere
10:00-10:03 P.M. NEWS AT A GLANCE & WEATHER						
10:30-10:32 p.m. STARDATE						
10:00 p.m.-2:00 a.m. Scott Peters Anarchistic eclectics	10:00 p.m.-2:00 a.m. Dan Downey Kickback, Folk, Blues, Rock	10:00 p.m.-2:00 a.m. Marta Davis Mad Dog Blues	10:00 p.m.-2:00 a.m. Barrett, Golding The Wandering Jew	10:00 p.m.-2:00 a.m. Mitch Amundson Rasta Man	10:00 p.m.-2:00 a.m. Marco de Sa e Silva Dangerously weak-kneed rock n roll	10:00 p.m.-2:00 a.m. Diane Nalty
12:00-12:03 A.M. NEWS AT A GLANCE & WEATHER						
2:00-6:00 a.m. Theron Yeager Hal Lewis Rock, jazz, little folk, lotta coffee						
2:00-6:00 a.m. Jack Boulwara Just rock						

LIBRARY OF CONGRESS CHAMBER
MUSIC SERIES 1979-1980
Sunday 5:00 - 7:00 P.M.

April 20
PROGRAM SIXTEEN
Poulenc:
Bartok:
Piston:
John Rushby-Smith
Martinu:
April 27
Program Seventeen
Mendelssohn:
Paul Chihara:
Shostakovich:

KEITH BRYAN, FLUTE AND
KAREN KEYS, PIANO
Sonata
Hungarian Peasant Suite
Sonata
"Szyzgy"
Sonata
THE PRIMAVERA String Quartet
Quartet in E minor, Op. 44, No. 2
"Primavera" Quartet (1978)
Quartet No. 8

May 4
PROGRAM EIGHTEEN
Schoenberg:
Schulamit Ran:
Ralph Shapley:
May
PROGRAM NINETEEN
Monteverdi:
Poulenc:
de Falla:
May 18
PROGRAM TWENTY
Tchaikovsky:
Brahms:
May 25
PROGRAM TWENTY-ONE
Beethoven:
Corigliano:
R. Strauss:

The University of Chicago Contemporary
Chamber Players, directed by Ralph Shapley
Suite, Op. 29
Double Vision
Song of Songs No. 1 (Premiere)
THE NEW YORK CHAMBER SOLOISTS,
with Daniel Llorca, marionette artist
Il Combattimento del Tancredi e Clorinda
Les Bestiaires
El retablo de Maese Pedro (Master Peter's
Puppet Show)

PROGRAM TWENTY-TWO
Mozart
Kenneth Lieberson
Ravel
June 8
PROGRAM TWENTY-THREE
June 1
Beethoven
Kodaly
Brahms

THE YUVAL TRIO (violin, cello, and piano)
Trio in A minor, Op. 50
Trio in B major, Op. 8
JAMES BUSWELL
VIOLIN AND JAMES TUCCO, PIANO
Sonata in B flat major, Op. 12, No. 3
Sonata
Sonata in E flat major, Op. 18

PROGRAM TWENTY-FOUR
Mozart
Beethoven
Brahms
June 22
PROGRAM TWENTY-FIVE
Haydn
Bartok
Beethoven
June 27
PROGRAM TWENTY-SIX
Beethoven
Mendelssohn
Faure

THE JULLIARD STRING QUARTET
Quartet in E flat major, K. 428
String Quartet (1979)—a new work by a
student at the Juilliard School
Quartet in F major
THE JULLIARD STRING QUARTET AND
STANLEY
DRUCKER, CLARINET
String Quartet in F minor, Op. 95
Duo for violin and violoncello
Clarinet Quintet in B minor, Op. 115

PROGRAM TWENTY-SEVEN
Mozart
Beethoven
Brahms
June 22
PROGRAM TWENTY-EIGHT
Haydn
Bartok
Beethoven
June 27
PROGRAM TWENTY-NINE
Beethoven
Mendelssohn
Faure

THE JULLIARD STRING QUARTET AND
GILBERT KALISH, PIANO
String Quartet in D minor, K. 421
Sonata in C minor for violin and piano.
Op. 30, No. 2
Piano Quartet in G minor, Op. 25
THE JULLIARD STRING QUARTET
Quartet in B flat major, Op. 103 (unfinished)
Quartet No. 1
String Quartet in F major, Op. 59, No. 1
THE JULLIARD STRING QUARTET AND
NADIA REISENBERG, PIANO
String Quartet in B flat major, Op. 18, No. 6
Trio in D minor, Op. 49
Piano Quartet in C minor

ALL PROGRAMS SUBJECT TO CHANGE

WFMT — CHICAGO SYMPHONY ORCHESTRA RADIO
SERVICE BROADCAST SCHEDULE [APRIL-
JUNE]

APRIL 20
CONDUCTOR: Sir Georg Solti
SOLOIST: Vladimir Ashkenazy, piano
ELGAR: Overture, *In the South (Alessio)*, Op. 50
BEETHOVEN: Piano Concerto No. 4 in G, Op. 58
ELGAR: Symphonic Study, *Falstaff*, Op. 68
APRIL 27
CONDUCTOR: Claudio Abbado
SOLOISTS: Samuel Magad, violin; Frank Miller, 'cello;
HAYDN: Ray Still, oboe; Willard Elliot, bassoon (all
soloists are CSO Principals)
MAHLER: Sinfonia Concertante in B-flat for Violin,
'Cello, Bassoon and Orchestra, Op. 84
Symphony No. 5 in C-sharp Minor
MAY 4
CONDUCTOR: Erich Leinsdorf
SOLOISTS: Donald Gramm, bass-baritone & narrator;
Janice Hall, soprano; Delia Wallis, mezzo-
soprano; Men of Chicago Symphony Chorus
(prepared by the Chorus' Assistant Director,
James Winfield)

PREVIEW — PREVIEW — PREVIEW

ALL-RICHARD STRAUSS PROGRAM:

Die Tageszeiten [The Times of Day], Song-
Cycle for Men's Chorus and Orchestra, Op. 76
(Texts from Eichendorff's *Wanderlieder*)
Der Burger als Edelmann [Le Bourgeois
gentilhomme] 'Comedy with Dances from
Moliere', Op. 60 (Concert Version of Hugo von
Hofmannsthal's adaptation of the Folio play,
with connecting narrative and English
translation by Richard Wilbur)

MAY 11
CONDUCTOR: Sir Georg Solti
ELGAR: *Pomp and Circumstance* March No. 4 in G, Op.
39, No. 4
BEETHOVEN: Symphony No. 6 in F, Op. 68 [Pastoral]
TCHAIKOVSKY: Excerpts from *The Nutcracker* Suite, Op. 71a;
SUPPE: *Overture miniature: Dance of the Sugar Plum
Fairy; Trepak [Russian Dance]; Dance of the
Toy Flutes; Waltz of the Flowers
Pique Dame, Overture*

(This was a Pension Fund concert, played in
the historic Auditorium Theatre in Chicago,
the hall in which the Chicago Symphony
performed before it got its own 'home', Or-
chestra Hall, and in which it had not played as
the Chicago Symphony for more than 40
years).

MAY 18
CONDUCTOR: Kazuhiro Koizumi
SOLOISTS: Jseph Golan, violin (Mr. Golan is Principal
SOLOIST:
Second Violin of the CSO)
BARTOK: *Dance Suite*
RICHARD MANNERS: *Violin Concerto (World Premiere)*
BRAHMS: *Symphony No. 2 in D, Op. 73*

MAY 25
CONDUCTOR: Rafael Kubelik
SOLOISTS: Mary Sauer, piano; Donald Koss, timpani
(both soloists are CSO Principals)
MARTINU: *'Double Concerto' for Two String Orchestras,
Piano, and Timpani*
Symphonie fantastique, Op. 14a

JUNE 1
CONDUCTOR: Leonard Slatkin
VARESE: *Integrals*
GINASTERA: *SIBELIUS: Concerto for Strings, Op. 33
Symphony No. 5 in E-flat, Op. 82*

JUNE 8
CONDUCTOR: Sir Georg Solti
SOLOIST: Samuel Magad, violin (Mr. Magad is one of
CSO's two Co-Concertmasters)
BARTOK: *Violin Concerto No. 2*
STRAVINSKY: *Le Sacre du printemps [The Rite of Spring]*

JUNE 15
CONDUCTOR: Sir Charles Mackerras
DVORAK: *Carnival Overture, Op. 92*
JANACEK: *Symphonic Poem, Ballad of Blanik*
SMETANA: *Vltava [The Moldau] from Ma Vlast [My
Fatherland]*
Suite No. 3 in G for Orchestra, Op. 55

JUNE 22
CONDUCTOR: Claudio Abbado
SOLOIST: Shlomo Mintz, violin
BRIAN FERNEYHOUGH: *La terre est un homme [The Earth is a Man]*
(U.S. Premiere)
BRUCH: *Symphony No. 3 in E-flat, Op. 55 (Eroica)*

VOICES IN THE WIND
Saturday 6:00 - 7:00 P.M.

April 5 Jessica Mitford, author; Marie Rhines, fid-
dler; Richard Condon, author; Brent Burns,
songwriter; Tim O'Brian, author; Oscar
Brand, host; Sam Levenson, author-humorist;
Martha Schlamme.
12 Curt Lees, spoonplayer; Sybil Morgan, MTA
spokesperson, Jack Pelsingser & Craig
Castleman, workshop director and teacher;
The Fabulous Five, graffiti artists; Jeffery
Mumford, composer; Betty Allen, mezzo-
soprano; Barry Hyamn, author; Joseph
Hirshhorn, art collector; Art Lovers Vox
Pops.
19 Marion Seldes, actress; Kenneth Cooper,
harpichord player; Leslie Ullman, poet;
Gerry Mulligan, saxophonist; Oscar Brand,
Something to Sing About; Eugene Moye,
cellist; Bosoms & Neglect Bernard Gersten,
John Wulp, and John Guare; Ethel Merman,
singer.

26 Robert Merrill, baritone; Tommie John,
Charlie Lau, Fred Stanle Yankees; Portnoy's
Complaint, Andy Trudeau; Edward Villella,
dancer; Smithsonian Sports Exhibit, Jim
Ryun, Pete Roselle, Jerry Lucas, Kelo
Shannon; Meadowlark Lemon, Harlem
Globetrotters; LeRoy Neiman, artist; Sully
Hay, tennis player; Frank Chirkinian, CBS
Sports; Kansas City Scoreboard, Jim Amend;
Glenda Pethers, Houston Oiler Derrick Doll.
May 3 Moses Pendleton, member of the Pilibolus
dance & mime group; Barbara Lea, singer;
Constance Costigan, Natalie Alper, Kevin
McDonald, artists-painters; Tom Wolfe,
writer; James Dickey.
10 Ben Bagley, record producer; Roger Sharpe,
author of "Pinball"; Donald Knaack, per-
cussionist on John Cage; Oscar Brand, "Pigs";
Jim Turner, concert performer on the musical
wrenches and saw; Maynard Solomon, on
Vanguard Records, and on his biography of
Beethoven; Misha Dichter, pianist, on the
experience of records.
17 James DePriest, conductor; Warren Robbins
& Amina Dickerson, on Museum of African
Art; June Jordan, poet; Billy Taylor, jazz
pianist; James Earl Jones, actor; Alice
Walker, poet-novelist.
24 Phillip Hayes Dean, playwright, on Paul
Robeson; Ossie Davis, actor-director-
playwright, on Dean's Robeson; Clamma
Dale, soprano; Melvin Deal, African Heritage
dancer; Richie Havens, singer; Teixeira Nash,
painter; Gilbert Price, actor.
31 Walter Wager, author-ASCAP PR director;
Robert Aldrich, director; Vanessa Redgrave,
actress; Alex North & Steven North, film
composer & film producer, father & son;
Charles Champlin, LA Times film critic;
Oscar Brand, host; George Segal, actor; Mario
Custodio & Saul Swimmer, actor & director.
June 7 Ed Love, sculptor; Linda Gray Sexton;
Sharon Chaiklin, dance therapist; Kate Millet,
author-sculptor; Robert Graham Small, Jim
Brady, and Fred Struther of New
Playwrights' Theatre; Dr. Charles Jarvis,
hjmorist-dentist.
14 Judy Fireman, editor; Oscar Brand, host;
Roger Tory Peterson, artist-ornithologist;
John Adams, composer; Robert Leydenfrost,
artist-author; Ralph Hopper, Arapahoe
storyteller; Paul Winter, saxophonist.

EARPLAY RADIO DRAMA
Thursday 9:30 - 10:30 P.M.

April 3 STEVIE Glenda Jackson stars in the story of
Stevie Smith, a celebrated English poet and a
remarkable woman.
10 STUFFINGS A lively comedy which asks the
romantic question: would you marry a
taxidermist?
I HOPE I NEVER GET TO MONMOUTH An
encounter with Dan Kelly in a bar, which
reveals him as a classic casualty of American
business.
17 LATER A mother and her two grown
daughters spend time together recalling the
past, considering their future and exploring
their relationship with men and their iden-
tities as women.
24 ABSENT FRIENDS A comedy of manners
develops as a reunion of old friends
deteriorates into an unwanted encounter-
session.
May THE ANTIQUE BEARERS Nightmare
images of a childhood in the segregated south
haunt a young black man as he arrives in
Harlem. Ray Aranha explores the psychology
of racism.
8 THE SIGN OF THE SCARAB A comic
mystery that follows the adventures of
detective Smith and Sergeant Jones in
tracking down a mysterious murderer.
15 WHEN THE TIME COMES Ben is a dying
man, in the last round of his bout with ter-
minal cancer. He and his wife reach for the
meaning of their lives while straining to face
death standing up.
22 YOU WOULDN'T REMEMBER When Jack
Beeston dies all his wife can say for him is, 'at
least he was never out of work!' But she didn't
know all there was to know about her
husband.

29 MANHATTAN has his problems
comedy. His psyche
middle of Charles
June 5 ATTRACTA AN
whose parents we
troubles in Ireland
more recent atmo
12 LAYHOUSE BLAN
War I, in a St. Lo
waits fearfully for
while her four da
uncertain future
19 LAME DUCK T
lodge and babys
give her and her
the new lodger's
Anne's greatest
26 THE 75TH F
Harris star in this
75th high school

MUSEE
ANN
"NEW
Guests for

April 18 Bruce Kramers
Veterinarian
Topic: Veterin
Colleen Moore
Silent Screen
Topic: Colleen
May 2 David Rothstein
Staff Physician
Michael Reese
Topic: Prof
Assassinations
May 9 Isaac Abella,
Associate Pro
University of
T.O.P.I.C: Lase
May 16 Warren Swann
Products-Exhib
International
Topic: Agricult
May 23 William B. Mo
Acting Region
General Servic
Topics: GSA; A
May 30 Jeffrey Levett
Director of th
Engineering
Rush-Presbyte
Topic: Biomed
June 6 Robert G. Sac
Director
Argonne Natio
Topics: Arge
Energy
June 13 Marvin Aspen
Judge of the
Topic: Rehabi
Courts
June 20 John Hartsfiel
Aerospace Ed
National Aeo
ministration
Topic: NASA
June 27 Jack O'Dowd
Director of U
Northwestern
Topic: No
Development
July 4 Richard Rush
Exhibit Desig
Richard Rush
Topics: Trans
Sculpting with

NEW — PREVIEW — PREVIEW

INTERMOUNTAIN OPERA / FOLK FESTIVAL, U.S.A. 1:00 - 3:00 P.M. Saturday

- April 12 **Cavalleria Rusticana** composer: Pietro Mascagni
conducted by James Levine
starring: Renatta Scotto, Placido Domingo, Pablo Elvira **Pagliacci**
composer: Ruggiero Leoncavallo
conducted by Nello Santi
starring: Placido Domingo, Montserrat Cabellé, Sherrill Milnes, Barry McDaniel
- April 19 **Marriage of Figaro** composer: Wolfgang Amadeus Mozart
- April 26 **Rigoletto** composer: Giuseppe Verdi
starring: Pablo Elvira
- May 3 **Barber of Seville (Part I)**
- May 10 **Barber of Seville (Part II)** composer: Gioacchino Rossini
conducted by: James Levine
starring: Beverly Sills, Nicolai Gedda, Renato Capecchi, Sherrill Milnes, Ruggero Raimondi
- May 17 Fourth Annual Winnipeg Folk Festival
- May 24 Brattleboro Folk Festival
- May 31 Fox Hollow Festival
- June 7 Fourth Western Regional Folk Festival
- June 14 North Carolina Folklife Festival
- June 21 Thirty-eighth National Folk Festival

JAZZ REVISITED Monday 6:30 - 7:00 P.M.

- April 7 **HAMP STOMPS, JUMPS AND ROCKS**
Some up tempo records from the all star sessions led by Lionel Hampton in the 1930's.
- 14 **OLD AND NEW**- Contrasting recordings of the same compositions from a period when jazz was evolving rapidly.
- 21 **SOME KINGS AND JAZZ**- A variety of recordings by jazz related musicians who carried the title of "King".
- KIRBY AND THE CLASSICS**- Recordings of classical compositions by the small jazz groups led by bassist John Kirby.
- May 5 **PIANO SOLOS**- Jazz pianists playing in a variety of different styles.
- 12 **PARALLELS**- Two recordings each of "Sweethearts on Parade", "Tea for Two", and "The Night We Called It A Day".
- 19 **THE HOT RECORD SOCIETY BIG EIGHTS**- 1940's recordings of the Hot Record Society label featuring some of the major musicians.
- 26 **THEY ALL PLAY WALLER**- Fats Waller compositions as played by King Cole, Tommy Dorsey, Harry James, and others.
- June 2 **GOODMAN TRIOS**- Recordings by the different Benny Goodman threesomes over twelve years.
- 9 **WHITEMAN REPEATS**- Two recordings each of favorite tunes recorded by Paul Whiteman.

- 16 **UNUSUAL INSTRUMENTS**- Jazz as played on washboards, jugs, celestes, harpsichords, and other unusual instruments.
- 23 **THEME SONGS**- The themes of Louis Armstrong, Frank Sinatra, Les Brown, and others.

MONTANA WOMAN Thursday 6:30 - 7:00 P.M.

- April 3 **Women in Literature**
10 Focus on Women-Women Aware Conference
17 **Women & Math Anxiety**
- 24 **Female Sexuality-Feminist Therapy**
- May 1 **Women On Campus: Becoming A Feminist**
8 **Saluting Mother's Day: Mothering**
15 **Images of Women In Film**
22 **Women and Pornography**
29 **Women & Fitness-Nutrition**
- June 5 **Women & the Environment**
12 **Women & Conflict**
19 **Women & Humor: Ellen Goodman Interview**
26 **Menstrual Cycles: Fact & Fiction**

- 28 The Jefferson River
4 The Harley Dam
11 Death by Drowning
18 Dr. George Haven Beecham
25 Stone House

OLD TIME RADIO Tuesday 10:03 - 10:30 P.M.

- April 8 **Ellery Queen** The World Series Crime
15 **The Avenger** Tunnel of Disaster
22 **Inner Sanctum** A Corpse for Halloween
29 **The Shadow** When The Grave is Open
- May 6 **Suspense** Nightmare
13 **Guns** The Warning
20 **Have Gun Will Travel** The Final Show
27 **Magnificent Montague** Publicity
- June 3 **The Whittier** Grave Secret
17 **Weird Circle** The Returned
Inner Sanctum Ghosts Always Get The Last Laugh

SUPERMAN—Wednesday 10:03 - 10:20 P.M.

- April 2 **Girl Stabbed In The Hospital**
9 **North Star** Mining Company
16 **The Tramp Steamer**
23 **The House Search**
30 **The North Star** Mine
7 **Keno & the Wolf**
14 **Lois Lane, Hostage**
21 **The Jinx** Town

PROGRAM GUIDE

SUNDAY 9:30 A.M.
CHICAGO SYMPHONY ORCHESTRA
Currently in his eleventh year of a historic musical partnership, KGLT presents the CSO and Sir Georg Solti as music director. See PREVIEWS for details. 2 hours.

5:00 P.M.
LIBRARY OF CONGRESS CHAMBER MUSIC
For the fifteenth successive year the Katie and Walter Louchheim Fund in the Library makes these tapes possible. The concerts take place in the Coolidge Auditorium, and will feature the Juilliard String Quartet, the Library's resident ensemble. 80-120 min. See PREVIEWS for details.

9:30 P.M.
STARS & STUFF
Hosted by P.J. Or te, whom most of you know as the charming voice of "Little Frieda", this series of original science fiction and fantasy stories written for radio comes to you from the folks at ZBS Media, creators of our hero-remember? Jack Flanders. 30 minutes.

MONDAY 10:00 A.M.

AGRICULTURE EXPERIENCE- AGRICULTURE U.S.A.
Alternating Sam Rosen's locally produced AG. EXPERIENCE, involving student and faculty, with the U.S. Dept of Agriculture program, we bring to you news and information pertinent to the area we live in. 15 minutes.

12:10 P.M.
JAPANESE PRESS REVIEW
Another current weekly dealing with editorial comment and opinion from our old friends at the Broadcasting Foundation of America in New York. 15 minutes.

2:00 P.M.
AERO ENERGY REPORT- ENVIRONMENTAL ISSUES
Alice Flynn and Dan Downey come at you with more informative material concerning all of us. Their shows will alternate weekly. up to 15 minutes.

6:30 P.M.
JAZZ REVISITED
Returning with some of the greatest sounds of the past, from NPR See PREVIEWS for details. 30 min.

9:30 P.M.
MIDNIGHT SPECIAL
Hosts Norman Pellegrini and Ray Norstrand bring you farce, show tunes, satires, British and American humorists, and gospel music. 60 min.

TUESDAY 10:00 A.M.

CONSIDER THE ALTERNATIVES
This weekly series on foreign and domestic policy issues provides a vital public forum for the discussion of current events. 30 minutes

12:10 P.M.
ARAB PRESS REVIEW
An on-the-scene program which quotes and discusses editorial comment from all shades of opinion on the most current vital issues in the Arab world. 15 minutes

PROGRAM GUIDE

2:00 P.M.
THE HUMAN CONDITION
Conversations with experts who have suggestions on how we can improve our mental conditions and our lives. 25 minutes

6:30 P.M.
THIRSTY EAR-NOTES FOR A LISTENER
Presenting major new artists in concert and interview. THIRSTY EAR will be aired alternately with our own locally produced show, featuring Alan Leech. 30-60 minutes.

10:00 P.M.
OLD TIME RADIO
Blasts from the past...golden greats. See PREVIEWS for details. 30 minutes

WEDNESDAY 10:00 A.M.

OVERSEAS ASSIGNMENT
News and commentary from around the world brought to life by the fine news staff of the BBC. 30 minutes

12:10 P.M.
ISRAEL PRESS REVIEW
BFA presents surveys of world opinion through editorials in the most influential newspapers of Israel. This program follows KGLT's news and weather and precedes listeners' personals. 15 minutes

2:00 P.M.
INTERNATIONAL LITERARY REPORT
A pass key to the wonderful world of books with contributions from Europe and the Far East interspersed with U.S. and Canadian comment. 30 minutes

6:30 P.M.
INSIGHTS AND INTERESTS
Anne Barnaby interviews local people and visitors to the Gallatin Valley and MSU. The interviews probe current goings on and experiences close to MSU and Bozeman residents. 30 minutes

10:00 P.M.
THE ADVENTURES OF SUPERMAN
See PREVIEWS for details. 15 minutes

THURSDAY

10:00 A.M.
FOCUS ON HEALTH
Forest Hospital Foundation presents interviews with physicians discussing areas of medicine where advances have been made and/or new treatment methods developed. 25 minutes

12:10 P.M.
LAST WEEK AT THE U.S.
A weekly report from the United Nations including floor debates and speeches. 15 min.

2:00 P.M.
VIEWS AND REVIEWS
A weekly KGLT production with Michael Sexson of English studies and Linda Sexson of Religious studies presenting their views of local occurrences, current and non-current books, movies and the like, and of things to do in Bozeman. 30 minutes

6:30 P.M.
MONTANA WOMAN
New this fall on KGLT. Jan Strout, Anne Barnaby, and others interview women on various topics. Includes womens news and events calendar. 30 minutes

PROGRAM GUIDE

9:30 P.M.
EARPLAY RADIO DRAMA
The 79-80 series continues, only now with a slot of it's own, allowing a weekly presentation. 1 hour. See PREVIEWS for details

FRIDAY 10:00 A.M.
MUSEUM NEWS OF THE AIR
The Museum of Science and Industry presents issues to the community through interviews with scientists, educators, authors, government and industry leaders, and other celebrities. 30 minutes

12:10 P.M.
BRITISH PRESS REVIEW
Yet another BFA production offering a survey of world opinion through editorials in the most influential newspapers of Great Britain. 15 min.

2:00 p.m.
PERFORMING ARTS PROFILE
Weekly interviews featuring portraits of prominent figures active in the performing arts. 30 minutes

9:30 p.m.
ALBUM OF THE WEEK
A preview of new releases from the Rock, Soul, Jazz, Folk, and Country music categories received during the week at KGLT. 45 minutes

PROGRAM GUIDE

SATURDAY 10:00 A.M.
KIDSTUFF!!!
Yes, Marta Davis returns with an assortment of tales and storyteller for a half hour of fun and entertainment for everyone. Even if you're not a kid!

1:00 P.M.
INTERMOUNTAIN OPERA-FOLK FESTIVAL U.S.A.
Five operas, hosted by Ray Pratt and Verity Bostic, will be aired the first six weeks. Followed by Folk Festival, to finish out the quarter. 2 hours See PREVIEWS for details

6:00 P.M.
VOICES IN THE WIND
A weekly opinion magazine of the arts produced by NPR. A continuing story of this nation's involvement with the arts is presented. See PREVIEWS for details. 1 hour 30 p.m.

ALBUM PREMIERE
A preview of new releases from the Rock, Soul, Jazz, Folk, and Country categories received during the past week at KGLT. 45 minutes

Sir Georg Solti, music director

The Chicago Symphony

In concert

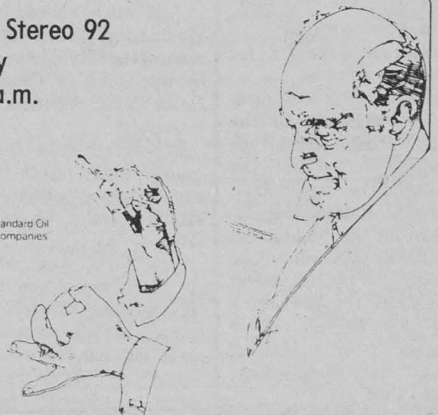
underwritten by
Bozeman Symphony
Society

A weekly series
of recent performances.

KGLT, Stereo 92
Sunday
9:30 a.m.



Presented by Standard Oil
and its Amoco companies



Phi Kappa Phi selects new members for initiation

Eighty-nine members of the junior and senior classes will be recognized for their outstanding academic achievement and will be initiated into M.S.U.'s academic honor society, Phi Kappa Phi.

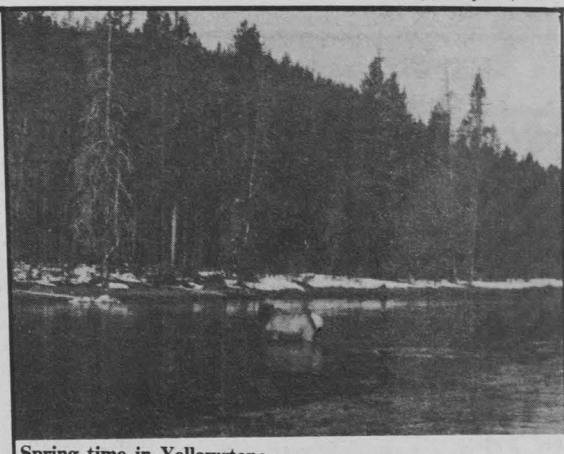
The Society of Phi Kappa Phi is the oldest national honor society recognizing academic excellence in all disciplines, and thus these students represent all seven colleges and schools of the university. They will join over 30,000 others being recognized in this way across the nation this spring.

The initiation ceremony is in the S.U.B. Ballroom at 6:00 p.m., May 27, and will be conducted by myself as President of the M.S.U. Chapter and Joseph E. Frazier, the Secretary. At the Society's banquet im-

mediately following this year's outstanding senior will be named, and the Fridley Distinguished Teaching Awards will be conferred on four members of the faculty. The students are:

Thomas P. Basinger, Industrial Arts; William L. Duncan, Pre-Veterinary; Donald J. Eliasson, Agricultural Business; Douglas R. Hart, Agricultural Economics; Joni L. Sasich, Plant and Soil Science; Eileen M. Walsh, Pre-Veterinary; Gregory J. Waters, Plant and Soil Science; Amorette F. Allison, Film and Television; Diane S. Huyser, Music; Aldin V. Johnson, Architecture; Richard N. King, Film and Television; Lisa C. Lauritzen, Art; Douglas Mark Schwarz, Film and Television; Karin K. Thomas, Music; Lori R. Anderson, Accounting; Brian D. Bras, Accounting; Russell W. Crawford, Accounting; Everett D. Figgins, Accounting; Lisa B. Hanson, Accounting; Jennifer R. Montgomery, Secretarial; Donald H. Murdoch, Accounting; Vickie S. Rausser, Accounting; Ruthmary J. Tonn, Accounting; Randy T. Weld, Management; Dorothy L. Baker, Home Economics; Constance C. Duffy, Home Economics; Carol L. Eliason, Elementary Education; Christine S. Gajewski, Elementary Education; Lynda J. Golding, Elementary Education; Sandra Lee Hamilton, Home Economics; Gary A. Heidner, Elementary Education; Katharine B. Hurley, Elementary Education; Robin A.

Hutton, ealth, Physical Education and Rec.; Jeneen Laura Jabs, Elementary Education; Joan E. Nikola-Lisa, Home Economics; Brenda L. Overton, Elementary Education; Deborah A. Pike, Health, Physical Education and Rec.; Janis L. Stewart, Health, Physical Education and Rec.; David Andersen, Chemical Engineering; Joseph D. Brookshier, Electrical Engineering; William P. Cornelius, electrical Engineering; Rick B. Drazich, Chemical Engineering; Mark C. Eatinger, Civil Engineering; Steven E. Elliott, Civil Engineering; Kurt John Erickson, Chemical Engineering; John A. Gasvoda, Electrical Engineering; Craig R. Granlund, Chemical Engineering; Lawrence R. Hall, Civil Engineering; Dan S. Johnson, Electrical Engineering; Steven A. Meisner, Civil Engineering; Thomas J. Morse, Chemical Engineering; Elizabeth Ratliff, Chemical Engineering; Wayne A. Robertson, Chemical Engineering; Scott L. Truster, Civil Engineering; Randall C. Violet, Electrical Engineering; Karl J. Warren, Chemical Engineering; Lawrence W. Wirtala, Electrical Engineering; Karen J. Acree, English; Uma H. Amirtharajah, English; Kelley J. Barnard, Psychology; Julie M. Bolding, Biology; Calvin L. Braakmsa, Political Science; Clark A. Chinn, Physics; Duane A. Claypool, Biology; Ted M. Dawson, Biology; Charles L. Dixon, Biology; Debra D. Eckhardt, Microbiology; Karl E. Grover, Biology; Kristine K. Knutson, Biology; Pamela K. Kober, Microbiology; Caroline Krauss, English; Lynn E. Lahren, Sociology; Renee M. Lance, Microbiology; Elizabeth J. Mentzer, History; Theodore E. Nelson, Biology; Mark B. Ritter, Physics; Susan E. Roberts, English; David M. Schmidt, Biology; Fay L. Shultz, Earth Science; Gregory C. Sisk, Political Science; Kenneth K. Steele, Earth Science; Chris A. Tiaht, Mathematics; Lydia C. Wizenalt, Microbiology; Lee E. Allen, Cindy L. Chamberlain, Lorraine M. Geissler, Noreen A. Johnson, Sue A. Revin, and Christina M. Stalberg-School of Nursing.



Spring time in Yellowstone

UNIVERSITY HIGHLIGHTS

MSU hosts rodeo finals

Hundreds of college students will be vying for national titles and \$125,000 in Copenhagen/ Skoal Rodeo scholarships at the College National Finals Rodeo (CNFR), June 17-21. Champions in four of the events will also be invited to compete at the 1981 Rodeo Superstars Championship.

Returning to Bozeman for the tenth year, after a switch to Lake Charles, Louisiana in 1979, the 31st CNFR is being held on the MSU campus.

Collegiate cowboys and cowgirls from 64 schools, representing 37 states, will compete for \$93,000 in scholarships on a regional level and \$32,000 on a national level. The monies are presented to the schools in the winners' names, and used exclusively for the education of participants in the schools'

rodeo programs. To date, U.S. Tobacco has awarded over half a million dollars through the Copenhagen/Skoal College Rodeo Awards Program. By the time the CNFR winds up, \$598,000 will have been awarded since the program was initiated in 1974. A special \$500 scholarship will be given to Miss College Rodeo when she is crowned on June 21.

The CNFR is sponsored this year by the Gallatin Empire Lions Club, MSU and the National Intercollegiate Rodeo Association.

More than 300 NIRA contestant's will compete in nine events during the five day rodeo. The NIRA is composed of ten regions, with each region eligible to send two men's teams and two women's teams to the College Finals.

Rifle match draws 68 people

The MSU Rifle Club held their Third Annual All Campus Rifle Match Thursday May 15. The All Campus Match was held by the Rifle Club as a fun Activity for the students and faculty of MSU.

Sixty-eight people participated in the All Campus Match. All equipment and ammunition was provided. The course of fire consisted of 10 shots prone, kneeling and standing. Members of the

Rifle Team were present to run the relays, give help to the participants and answer any questions about competitive shooting. All of the scoring for the match was done by Rifle Team Coach Jack Foster.

Awards were given to the top five people in the match. The winning score out of a possible 300 points was a 261 by Rob Davidson, 2nd place was Stu Jennings with 247, 3rd place was Tom Roll from

the Anthropology Department with a score of 233, 4th place was Bob West with 231, and 5th place was Jim Eales with 230. There was a 5th place tie between Jim Eales and Tim Maze. The tie was broken by NRA 3-position rules- the person with the highest standing score is the winner. Jim Eales had a 71 and Tim Maze had a 70 for standing scores.

From the enthusiasm of the students and faculty towards the All Campus Match the Rifle Club is hoping that a fourth annual match will be possible. The continuation of this match will depend upon the future of the Rifle Team.

The Rifle Club would like to thank the students and faculty members that participated.

In the Fraternity Competition:

Fraternity	Competitors	Score
1st Sigma Chi	Bob West & Rich West	432
2nd Sigma Chi	Jim Eales & A.J. Kalanick	401
3rd Pikes	Tim Ritter & Tracy Brown	393
4th Kappa Sigma	Reader & Colmey	335
5th Delta SIGMA	Mike Ayers & Doug Shipp	287
6th Pikes	Bruce Reid & Kelly Tuck	275
7th Sigma Phi Epsilon	Randy Huss & Pat Gilmore	238

Commencement exercises set for June 7

Commencement is scheduled for June 7th for this years graduates.

Graduates who are planning to participate in the Commencement exercises are encouraged to attend the "Meeting of the Candidates"; Wednesday June 4, 1980, at 4:00 p.m. in the Fieldhouse. Graduates who will not be attending Commencement are to notify the Registrar's Office by filling out a "Request for Mailing Diploma" form by Friday, May 30, 1980.

Ad course offered in June

The course "Everything You Wanted to Know About Advertising But Were Afraid to Ask" will be offered June 4, Wednesday, in the conference room of the City Center Motel by the Office of Continuing Education at Montana State University.

Preregistration for the course, which meets from 7 a.m. to 1 p.m., is required by May 28. Cost of the course is \$25.

Neal "Nick" Nixon, who has 20 years experience in entertainment, will teach the course. He will discuss such areas as the roles of advertising, demographics, target marketing, product

evolution, basic media strategy, and how to use radio, T.V. and newspapers.

Nixon has a master's degree in industrial psychology from the University of Tulsa. He has worked in television with such shows as "Ironsides," "The Virginian," and "Daniel Boone."

Nixon was a radio announcer at KXXL from 1971 to 1973 and at KBMN from 1973 to 1977. He has served as a guest lecturer at MSU in advertising procedure and advertising management.

Nixon is currently an insurance agent at Montana (Continued to page 16)

intramurals

ARCHERY RESULTS

Mike Ellig was on target in the Intramural Archery Shoot, scoring 296 points to easily clinch first place in the recurve division. Larry Martin cleaned clocks in the compound, no-sight category scoring 376 points, while Louis Nordrum took home the fletching in the compound, sight class with 338 points. CONGRATULATIONS.....eat your heart out Robin Hood!

SOFTBALL PLAY-OFFS BEGIN

Intramural Softball Play-Offs begin Tuesday, May 27. Check in 301 Romney to see if YOUR team made it to the tournament!!!!

TRACK

Make TRACKS to 301 Romney before it's too late. Today is the last day of sign-ups for the Intramural Track Meet. The Meet will be held on Wednesday and Thursday, May 28 and 29, beginning at

5:00 p.m. on the MSU track. MOVE IT OR LOSE IT!!!! GOLF

Get into the swing of things!!! Entries open today for the Intramural Golf Match and sign-ups will be taken through Thursday, May 29, in 301 Romney. The fun begins on Friday, May 30, at Valley View Golf Course. See you there!!!!

MILE CLUB

Tam Woodrich logged another 50 miles to bring her total to 75 miles, while Debbie Howes has stepped off 200 miles. Bill Foulk is now kickin' ASH at 2800 miles. AWESOME!!!!

GLUB CLUB

Jerry Rodriguez has again added 5 miles to his total to up himself to 20 miles. Cherie Barth has kicked by 40 miles, while Jean Perkins has reached the 50th milestone. Let's hear it!!!!

Handicapped ski teaching course begins fall quarter

The Health, Physical Education and Recreation Department will be instituting a new course for students interested in teaching the handicapped to ski. A new course P.E. 480 - Teaching Skiing to the Handicapped, will be introduced Autumn Quarter. The two credit class will consist of one credit lecture and one credit lab. The lecture portion will introduce the student to characteristics of special populations, methods of teaching skiing

and adapting teaching methods to the handicapped. The lab portion of the class will be a two day clinic at Bridger Bowl simulating disabilities and the use of special equipment in teaching.

The new course will be a pre-requisite for a practicum to be offered Winter Quarter providing the student instructor with an opportunity to teach a handicapped person.

Mr. Herb Agocs, Associate Professor of Health, Physical

Education and Recreation will be administering the program. Mr. Agocs recently spent the Winter Quarter in Winter Park, Colorado, teaching skiing to the blind, deaf, amputees, mentally retarded, victims of Cerebral Palsy, multiple sclerosis, post polio and trauma related disabilities.

Students interested in taking the course may add during Autumn Quarter and should contact Mr. Agocs.

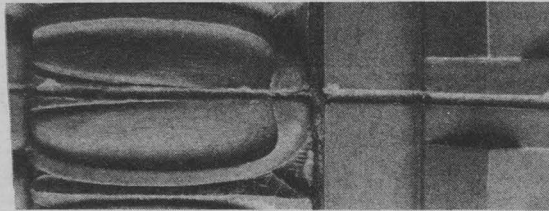
Alcohol fuels conference set for May 31 at EMC

A conference on the farm scale production of alcohol fuels will be held in Billings, Montana on Saturday May 31, 1980. The event is being cosponsored by the Alternative Energy Resources Organization, Northern Plains Resource Council and the National Alcohol Fuel

Producers Association. The purpose of the conference is to give farmers and ranchers the necessary information to begin their own fuel production.

The conference will be held on the campus of Eastern Montana College in the Library Auditorium 148. Registration will begin at 8:00 a.m. Tickets, at the door, are \$14 per person, or \$21 for a couple. All those who preregister will receive a \$2 discount, and members of Alternative Energy Resources Organization (AERO) and Northern Plains Resource Council (NPRC) will receive an additional \$3 discount. Lunch is included in the cost of all tickets.

For more information, or to order tickets, write to AERO, 424 Stapleton Building, Billings Mt 59101, or call (406) 259-1958.



Win a free pizza from Happy Joe's. Guess where this photo was taken and call 994-2611 after 2 p.m.

Reynolds dinner is tonight

A dinner honoring Dr. Creech Reynolds, who has been with the Department of Music at Montana State University for 25 years, will be held at 7 p.m. Monday, May 26, at the Cartwheel Supper Club.

degrees from Oklahoma State University and the Eastman School of Music, Rochester, N.Y.

Reynolds has been a member of the Rochester Philharmonic and Civic Orchestras at Rochester, served as acting chairman of the music department at Central State College, and was an assistant concertmaster of the Oklahoma City Symphony.

Reynolds began teaching at MSU in 1955 and has done research in the fields of motor skills used in music and aesthetics in music.

Tickets for the dinner are \$6 per person and may be purchased from the MSU music department until Friday, May 23. The dinner is open to the public with a cocktail hour at 6 p.m.

Reynolds was appointed chairman of the MSU music department in 1966. He holds

Committee seeks nominations

Four terms on the University Budget Planning and Review Committee will end in June 1980. Since this committee is active throughout the summer these vacancies should be filled this quarter.

Nominations are requested from Education, Extension, Library and Nursing to fill the seats held by George Shroyer, Verne House, Anna

Price, and Sue Barkley. Shroyer, House and Price are eligible for re-election. Nominations of female and minority faculty are particularly requested.

Please send written nominations or expressions of interest to Audrey Jean Haight, Committee on Committees, Renne Library, by Friday May 23, 1980.

Dial-a-Happening

994-3541

7-1707

END OF SCHOOL.....

PARTIES!!!

15 TAI LANE

AT THE

Slide — Co

2 - WEEK CALENDAR

CUT OUT AND SAVE



MAY 16 - MAY 29

Slide Calendar

FRI. 16	SAT. 17	MON. 19	TUES. 20	WED. 21	THURS. 22
2:00-7:00 TGIF Club Ladies Night 7:00-9:00 free brew For the Ladies NO MEN TIL 9:00	Celebrate Football check our super specials	Wine Night SPECIALS Pitchers \$3.50 Glass \$1.00	INTRAMURAL Drinking Contest 10:00 → TWO FOR ONE 8:00-11:00 BUCKHORN HAMMS	HUMP DAY! OLY SPECIAL Pitchers \$2.00 Bottle 70c Tap 40c Oly T-Shirt Raffle Every hour 9:00-1:00 BUFFS SPECIAL	MUG NIGHT 25° Get hammered 7:00-2:00
FRI. 23	SAT. 24	MON. 26	TUES. 27	WED. 28	THURS. 29
2:00-7:00 TGIF Club Ladies Night 7:00-9:00 free brew For the Ladies NO MEN TIL 9:00	check our super specials	Wine Night SPECIALS Pitchers \$3.50 Glass \$1.00	MUG NIGHT 25° Get hammered 7:00-2:00	HUMP DAY! OLY SPECIAL Pitchers \$2.00 Bottle 70c Tap 40c Oly T-Shirt Raffle every hour 9:00-1:00 BUFFS SPECIAL	MUG NIGHT 25° Get hammered 7:00-2:00

CUT OUT AND SAVE

We're Dyin to Meet You



Boho Babel



by Tony Naturale

(Boho-Editor's Notes: This newly created column, **Voices**, serves as a timely and much needed print space for a flourishing tribe of New Bozemians. Settling in Bozeman, these New Bozemians are people like you and me except that they are riding on a mental train of thoughts (or rather a spacecraft of enlightenments). They carry three essential luggages-- a love for

love, an art for art, and a civilization of all civilizations. So don't just sit there and get bored; come on out and get on board. The essay printed below is written by a civilization engineer who is

currently writing the first interdisciplinary textbook for all future civilization engineering students. Next week, there will be a history on The New Bozemians.)

by Oral Bohemian

Good-day, this is the first in a series of rambling, one-sided dialogues. You can, of course, stop reading and respond on your own at any time. Quite frankly, I'd rather demand you to do a little rambling of your own, even though it will probably seem like useless drivel at first.

As an opening note I would like to mull over the meaning of civilization, man as non-equilibrium assemblage of carbon based organic molecules, and the finite nature of the planet Earth. This is your first chance to get off. Next stop: North Station.

Staying just this side of asking the question, "What is the meaning of Life," (which will be dealt with in dialogue three or four), I would like to raise the question--"What do

we want to leave behind, how would we like to be remembered?" There's alot

of talk these days: Mine the Persian Gulf, Return the Shah,

No Uranium enrichment plants for South America, Import Tariffs on Foreign Goods, Invade Cambodia (oops, wrong decade!), Nuke the Whales, Nuke Manhattar and so on.

Well, all this talk has a very two sided perspective...you know, us-them, ally- enemy. In all the talk these days it is always someone ruining or returning or tariffing or denying or applauding or nuking somebody else. This is not useless drivel, this is people, people who are right on both sides. **We are like the different continents on which we live.** Always moving directly apart, violently colliding head-on, slipping, obliquely passing one another. This is human interaction, being played on the ball park of human nature. Next stop, Fenway.

This brings me back to my question: "What do we want to leave behind, how would we like to be remembered?" Not as Asians or North Americans or African, Orientals or Occidental, but as humans, as **Earthlings!**

It is one of the abiding laws of Nature (actually the 2nd law of Thermodynamics) that for every expenditure of energy, you get a little warmth, some work done and a small increase in the universal chaos (entropy). Well, look around Bozo, we are expending our energies, our physical, mental,

emotional, human and worldly (earthly) energies at a rate greater than ever before. Don't get me wrong, I'm not one to predict gloom and doom such as these researchers at the sausage Institute who predict "that at our present rate of consumption we're going to be out of pepperoni in 17-30 years, conservatively speaking."

But don't laugh too long. The energy resources of the Globe are finite. Now if you could get a little energy back (warmth) and get something done (work) every time you light a match (the 1st Law) we'd be in great shape; The Earth would last forever, getting better all the time. But you can't. Every time you spend a match you get some warmth, some illumination (work) and you contribute a wee bit to the cosmic chaos. The Milky Way moves a fraction of the smallest unequivocal distance away from the center of the universe. And let's face it, **there's only so many matches in the box.** Next stop, Commonwealth and Washington.

You may want to get out here and walk the rest of the way. If I haven't impressed you Earthlings (plural), let's see if I can offer another analogy that will strike a little closer to home. You (individual, singular (possessive)) are not in equilibrium with yourself. For the same reason that the edges of the universe are moving slowly away from your center, you too are moving slowly away from your center. It took some energy to make you, and that energy is not perfectly conserved. To get warmth (love) or to get something done (go to a kegger or cocktail party) there is an irreversible loss, a wee bit of chaos. The chaos is the part that will get you. You are

finite. So regardless of whether east meets west or we mine their harbor, **ying will come to yang**, someday. Next stop, Roxbury.

Well, you could get off here and say, "Another Lt. Colonel Worldend." As I said earlier, I am not one to predict gloom and doom. I would like to suggest an alternative.

Let's try to get together with folks around the universe and see if we can't do something about keeping the universe's edges from moving away from the center. After all, it's only the universe that will last forever, getting better all the time, regardless of how fast the edges are moving. You could get off here, but we've come so far. Besides, it's fun to ride the trolley through the round-house.

Hell, if we spent just half the matches we've spent on weaponry, war, defending ourselves from them into peaceful projects such as an attempt to have a more universally agreeable dialogue, we could be having cocktails with the folks that vacation on Mars. Let's invest some of our precious matches into a message that will still be strong and fast when it gets to the moving edges of the universe. While we wait for a reply let's wisely strike our remaining matches for more warmth (love) and less to get something done. And if we do need a precious bit of flame to get something done, let it be to build a better tractor, to make the fish grow fatter, to feed the hungry (us and them). We must spend our remaining matches to **keep all the people, us and them, you and I.** If we ever get a reply to our message, they may want a dialogue with children or a people who think the edge of the rain forest is the edge of the universe.

STUDY IN EUROPE

1980-81

England, France, Germany

Earn MSU credits

contact: Office of International Education

Wilson 2-194 994-4351



FREE-FREE-FREE

Coupon

FREE Sundae when you buy lunch.
Buy any sandwich, get a FREE Sundae.
Chocolate, Hot Fudge, Butterscotch,
Strawberry.

With this coupon.

LAIRS

Ice Cream Parlour & Restaurant

726 N. 7th

CASH REBATE

\$200

MUSTANG-CAPRI-PINTO
FAIRMONTS, ZEPHYRS

\$100

FIESTA
FRONT WHEEL DRIVE

GRADUATE TO
SOMETHING NEW

BOZEMAN
FORD-MERCURY
587-1221

Join the "George"
and the Friday Afternoon Club.

1:00 to 7:00 every Friday.

* ATTENTION REGISTERED STUDENTS *
* TRANSCRIPTS requested after May 30, 1980 will NOT be *
* issued until your Spring Quarter grades are posted. *
* Graduating students are advised that transcripts will be *
* available only after their degree is posted (by July 1). Let- *
* ters of "Completion" will be available upon written request. *
* GOOD STUDENT AUTO INSURANCE forms will NOT be *
* processed until your Spring Quarter grades are posted. *
* Going to MSU's Summer Session? "Applications" or *
* "Intent to Register" forms are due from each student by *
* June 2, 1980. *

The Trinity boys return

The Trinity Boys are back in town Saturday May 31st. The wests wackiest cowboys, one night only in 339 Johnson Hall. It's a double-feature you won't want to miss!

THEY CALL ME TRINITY Rated "G"

Starrin Terence Hill, Bud Spencer, Dan Sturkie & Farley Granger as "Major Harriman."

A band of pudgy Mexican bandits, a group of bearded pacifist Mormon farmers, an evil unscrupulous rancher and a lazy, grimy, grinning, gunslinger are drawn together in crunchy, crackling mayhem that turns the old west into a madhouse of side-spitting insanity.

Frontier karate, radicalized farmers, and southern belles make this riotous western spoof whiz along with a fast and furious funniness!

TRINITY IS STILL MY NAME Rated "G"

Starring Terence Hill, Bud Spencer, Harry Carey, Jr. Yanti Somer, and Jessica Dublin.

Here's another rolling addition to the TRINITY series of Western spoofs. Two Ne'er-do-well cowboys promise their dying Father that they will become successful outlaws with a huge price on their heads. But, no matter how hard they try, they come out of the Adventure on the good side of the law. Encounters with a

band of outlaws disguised as monks a beautiful pioneer woman, and a corrupt village leader, leads to plenty of laughs in this merry, G-rated action film.

Bring the family, it'll be a night you'll never forget. "All proceeds go to the MARCH OF DIMES." Tickets are only \$1.75 for both shows, we'll see you there, sponsored by Delta Sigma Phi, and remember TRINITY is back!

The first show begins at 7:00 p.m.

living in the dark



by Scott Peters

One of the funniest films to find its way into the Bozone, "Simon", is a definite must for anyone wishing something of a belly laugh.

"Simon" was written and directed by Marshall Brickmen. It's his first directoral effort, the past few years being productively spent helping Woody Allen write his last few films. For a first film, it is a particularly impressive effort.

The government has provided blank check funding to an outfit called the Institute for Advanced Concepts. The government has forgotten they existed, but is still providing funding for them. The institute has gathered some of the best and the brightest and lets them poke at what they will. What they have ended up with is a group of practical jokers par excellence.

"This is Becker, he's in media." Becker holds up a small box. "This device modifies Nielsen ratings." He holds up an issue of Variety. The Headlines read: "Donny and Marie Get Record 60 Share" Becker continues, "Actually, there were only 12 families in Utah watching the program."

While at dinner one night, Becker wonders what would happen to society if they really did contact an extraterrestrial. To find out, they find themselves a space case to convince that he is, in fact, an alien orphan.

Enter Alan

Enter Alan Arkin. They successfully convince him that he isn't of this world. He proceeds to get out of control. The rest of the film has such

entertaining twists that I wouldn't dast spoil it for you.

As expected, the film has something of a Woody Allen flavor. It takes a lot of swipes at what makes day to day existence in this culture a pain in the ass. While not as cold as many films produced in New York, it has insights into that insanity known as the West Coast that only a New Yorker could conceive.

It also has the usual assortment of in-jokes that many film goers would not recognize as humor. One researcher that is working on recombitant gentics with humans and beetles is caught reading a copy of Kafka's Metamorphosis. When asked where he came from, Arking replies "Orion". Orion was once the upper level management of United Artists, who quit in mass and formed their own production company, Orion Pictures.

The film also features some nicely turned performances by the hippy lady that appeared on the Smother Brothers show and by Fred Gwynne, Muldoon of "Car 54" and later Herman Munster.

While it does have a flavor of Woody Allen, Brickman avoided copying Allen. Woody Allen's humor has been derived, to a certain extent from Brickman's genius, rather than the other way around.

"Simon" tends to drag a bit towards the end, but it has a fairly satisfying ending, considering where the film has gone. All in all, while we may have lost a great comedy writer, we've gained what could become a great comedy director, a rare thing indeed in these days of sappy and mindless sit-coms.

Jabberwocky
50¢
The magazine contains short stories, poems, drawings and photographs

The Long Riders
"All the world likes an outlaw. For some damn reason they remember 'em" — Jesse James

Shows at 9:30 only

THE BOWL 414 E. BAKER

Bill Murray
MEATBALLS

Showing at 7:30 & 9:30

FRIDAY THE 13TH
A PARAMOUNT PICTURE

24 Hour Dial-A-Movie
586-9505
586-9506

Find out what's playing today!

They were warned... They are doomed... and on Friday the 13th nothing will save them!

A 24 hour nightmare of terror.

Will you survive... Will you want to survive!

Join the Summer Evening Fun Sign up now for Summer Leagues Call 586-5018

THE HOLLYWOOD KNIGHTS
A Columbia Pictures Release

Shows Tonight at 7:20 & 9:20 Sunday only Earlybird Discount at 5:15

DON ADAMS is MAXWELL SMART
THE NUDE BOMB
A UNIVERSAL PICTURE

Shows at 7:35 & 9:40 Sunday only Earlybird Discount at 5:30

Winner 5 Academy Awards
DUSTIN HOFFMAN
KRAMER vs. KRAMER
Including Best Picture Best Actor Best Supporting Actress

Shows at 7:35 & 9:40 Sunday only Earlybird Discount at 5:30

BETTE MIDLER
ALAN BATES
THE ROSE
ALSO! PG

After her divorce, Erica got to know some pretty interesting people... including herself.

an unmarried woman

Gates Open at 8:15 Shows at Dusk

ASMSU Films Presents

THE CAT PEOPLE

WED. MAY 28
8PM 339 JOHNSON
MSU STUDENTS 1.00
OTHERS 1.75

The Aftermath:

I LAVA, LAVA THAT ASH

by Julie Evans

As the volcanic ash slowly settles upon the small western town of Bozo all inhabitants are firmly cautioned to stay inside. Cabin fever slowly but surely starts to effect the many who must share the fallout shelters. A few jokes such as; "Can we eat meat on Ash Monday?" and "Kiss my ash" are circulating to ease the tension. As more people enter the protective shelter they are vacuumed and very thoroughly checked for ashes.

Inside the shelter the women are busy making every effort to stretch supplies and take advantage of the situation by making particle pie, lava lasagne, and an eruption of other dishes. Exposed water supplies are reported to be dangerous because of contamination so we are only drinking boiler-makers. Meanwhile, the men are working vigorously to cover up all the ash holes in the shelter. The cigar these men are smoking inside the enclosed shelter is probably causing more ashes and harm than St. Helens herself and the smell is definitely more toxic.

World famous geologist and Fortune Hunter, Helen Volcano, is outside risking her life under cloudy hazy skies to gather particles of ash for

testing and, if we ever survive this traumatic experience, possible sale and exploitation. She intends to bottle it and sell it as "A Cheap Piece of Ash".

Police Chief Hanson has been trying to quiet down college "Ash-bashes" all day long, the lava finally gets here, and all he gets is light ash all over his car in which some prankster has written "Mount St. Helens or Bust!" A number of time Hanson has been told that he doesn't need to wear a mask for protection indoors but he explains that he isn't wearing one. Hanson, I am surprised!

Mountain Bell has asked that Mr. Molten Rock quit making an ash of himself and limit his phone calls because he is jamming the lines and emergency calls can't get through.

As I sit here listening to the faint sound of an air raid siren, which I can hear through the blaring lyrics of Jimmy Buffet telling us he doesn't know where to go either, I think about Rocky who is far away at Quake Lake. In case we don't live through this incident to tell about it and how we all made the best of the situation, I hope whoever finds this message will tell him that I lava, lava, lava him.



Photos by Julie Evans



CLASSIFIEDS

Announcements

RIDE NEEDED to Las Cruces, New Mexico, or area. Call Becky, 587-1091. Share usuals. **GOING TO SEATTLE?** Will share expenses if you'll carry small pickup load or pull rental trailer carrying that much. Call John Linder, 586-5971, and leave a message.

WANTED: 70-76 Suzuki 125 Motorcycle. Any condition. Call Mark at 994-3435. Keep trying.

I NEED A PLACE FOR SUMMER and possibly fall quarter. Preferably a house. Call Brad, 994-2967.

SWAP HOUSES: Professional couple two children want to swap their 3 bedroom apartment with garden and garage in Berkeley, 15 minutes from San Francisco for house in Bozeman for 2 to 4 weeks during the summer. 587-9689.

For Rent

HORSES PASTURE BOARDED: Hay fed daily during winter. Good facilities. 587-3031.

ROOMMATE NEEDED to share a two bedroom apartment one block from campus. It is fully furnished and has a washer and dryer in the building. \$135 per month. Call 586-6985.

ROOMMATE NEEDED to share 2 bedroom apartment 6 blocks from campus. Must be non-smoker. Available in June. \$175 per month, utilities included. Laundry, fireplace. Call Christopher for information at 586-6890.

HORSES PASTURE BOARDED: Hay fed daily during winter. Good facilities. 587-3031.

FOR SUMMER: 2 bedroom-single beds, next door to bathroom, shower and two sinks. Livingroom & kitchen. Utilities furnished. 586-2248.

For sale

FOR SALE: One Conn Strobotuner, perfect condition. \$325.00. 222-7080, Livingston.

TYPEWRITER FOR SALE: Manual with case. \$50. Types well. 587-2962.

FOR SALE: Double bed and 9 x 12 carpet. Any reasonable offer accepted. 586-6943.

STEREO FOR SALE: LRG Advent speakers, Nikko amp, Pioneer turntable. 25 records. \$400. 587-2962.

FOR SALE: E.B. rock climbing boots. Used twice, phone Jim, 586-8063 around sup-
per-time.

FOR SALE: Camera outfit, Nikon F Nikkor 35, 50, 105, 200 lenses; Omega enlarger and darkroom equipment, Garrard turntable and Sansui AM-FM stereo receiver, H & R 22 pistol. Call Christine, 586-3568.

SANYO REFRIGERATOR: 1.5 cubic feet. Perfect for dorms. \$55. 586-4464.

AVON to buy or sell. Call 587-0818.

Jobs

COUPLE WANTED FOR SUMMER RANCH HELP: Man should know horses, woman help with cabins. Cabin and utilities plus pay. 996-4266.

CAREER SEEKERS: Put your best foot forward with a powerful, professionally prepared resume. Call Career Concepts today at 586-0231.

TEACHERS WANTED: Elementary and Secondary. West and other states. Placements since 1946. Southwest Teachers' Agency, P.O. Box 4337, Albuquerque, NM 87196.

Lost and Found

SIGNIFICANT REWARD for return of a red nylon velcro closure wallet removed from my pickup at the Bacchanalia. Important medical papers required! NO QUESTIONS ASKED. 587-0173 or call SUB please!

REWARD: For maroon & Gray Wyoming woolen jacket, with checkbook inside. Lost at Rocking R Bar on Saturday. Any information please call 587-9360, ask for Brian.

LOST: One pair of prescription sunglasses, lost in front of 101 Gaines, May 21. Call 994-3431 after 10:00 p.m.

Personals

HAPPY 1ST ANNIVERSARY Deaner and Jim. Love S & M.

HUCKERS: "The Bitch is back," Elton John.

CLASSYC: Let a has been bel Ingrid D. led recently. (653-4578).

Calendar

THURSDAY, May 29

There will be a lecture on television management-sales by Mr. Peter Friden, General Manager, KPAX-TV in Missoula in Cheever Hall, Room 212. It is organized by F & TV 340-Television Management-Sales Class. Faculty and students are invited to attend.

All submissions for the calendar must be typewritten and double-spaced. Deadlines are at 4 p.m. Wednesday and Sunday for Friday's and Tuesday's papers, respectively. The calendar is a public service to our readers.



We want a few good people

EXPONENT

WRITERS PHOTOGRAPHERS LAYOUT
PERSONS SECRETARIES AD SALES
PEOPLE ARTISTS

WE ARE NOW HIRING FOR FALL
SEE US IN THE BASEMENT OF THE SUB

MUSEUM
9-4 SOWMENDAYS
1-4 SOWMENDAYS
OF THE
ROCKIES



BE ON THE BOARD OF DIRECTORS AT 22.

Think of a ship as a corporation, and it's not farfetched at all. A destroyer may have fifteen officers, other ships even fewer. Even the most junior officer gets to share in running the show.

You become part of the management team when you get your commission as an ensign after just 16 weeks of leadership training at Officer Candidate School.

Choose to be a Navy officer and you are responsible for people and equipment almost immediately.

Many officers go on for further advanced schooling. The Navy has literally dozens of fields for its officers—

everything from nuclear propulsion to systems analysis, oceanography to inventory management. In graduate school, this training would cost you thousands, but in the Navy, we pay you.

Ask your Navy representative about officer opportunities, or mail this coupon for more information. Or call toll-free 800-841-8000 (in GA call toll-free 800-342-5855). There's no obligation, and you'll learn about an excellent way to start a career in management. As a college graduate you can get management experience in any industry. But you'll get it sooner—and more of it—in the Navy.

NAVY OPPORTUNITY INFORMATION CENTER C140

P.O. Box 2000
Pelham Manor, New York 10803

Yes, I'm interested in becoming a Navy Officer. Please send me more information. (ØG)

Name _____ (PLEASE PRINT) _____ LAST

Address _____

City _____ State _____ Zip _____

Age _____ †College/University _____

‡Graduation Date _____ †Grade Point _____

Δ Major/Minor _____

Phone Number _____ (AREA CODE) _____ CN5/80

The More We Know, The More We Can Help. The Privacy Act under Title 10, Section 503, 505, and 510 states that you do not have to answer the personal questions we have asked. However, the more we know, the more accurately we can determine your qualifications for our Navy Officer Program.

NAVY OFFICERS GET RESPONSIBILITY FAST.

Stress

(Continued from page 3)

easier questions first and then move on to the more difficult ones.

13. Read each question twice, slowly. Underline key words and phrases. Once you have decided on an answer, resist the temptation to alter your response. 14. Re-word

questions in a way that makes sense. 15. To answer multiple choice questions, use a process of elimination. 16. If you can't answer a question, go on to the next one.

Remember, stress is a part of our daily lives and can't be avoided. What you can do, though, is learn to deal with it more effectively. Spring is a time when students are "under

the gun," so it's a good time to use and practice new strategies for your old problems.

MustardSeed

(Continued from page 4)

mess from top to bottom. There's still time to defeat it if you get on the horn to Senators Melcher and

Baucus. Otherwise, the choices are limited and the options most unpleasant. Peace.

Webb

(Continued from page 5)

of the Bozeman community, not the cause of it. No one, under circumstances, "deserves" anything from anyone, and that includes the University community. If we can't make it on our own, we have little standing to complain about the actions of others.

Paul W. Marsh
Secondary Education

VISTA

(Continued from page 5)

to serve one year in a low-income area of the United States or two years in a developing nation.

The American volunteer spirit is alive and the opportunities are abundant. We would like to thank you and your readers for this chance to express our needs. For more information please write:

Peace Corps/VISTA
Recruitment Office
Room 103E
Denver, CO 80203

Sincerely,
Tim Keefe
Area Manager

Advertising

(Continued from page 10)

International Insurance. For more information, interested persons should contact the Office of Continuing Education at MSU, 446 Reid Hall, 994-3851.



A STANLEY KUBRICK FILM

STARRING

JACK NICHOLSON SHELLEY DUVAL "THE SHINING"

WITH

SCATMAN CROTHERS, DANNY LLOYD STEPHEN KING

BASED ON THE NOVEL BY

SCREENPLAY BY

STANLEY KUBRICK & DIANE JOHNSON

PRODUCED AND DIRECTED BY

EXECUTIVE PRODUCER

JAN HARLAN

PRODUCED IN ASSOCIATION WITH
THE PRODUCER CIRCLE CO.



From Warner Bros. A Warner Communications Company © MCMXXX Warner Bros. Inc. All Rights Reserved.

WORLD PREMIERE MAY 23
NEW YORK and LOS ANGELES
AND FROM JUNE 13
AT A THEATRE NEAR YOU

1980 SPRING GRADE REPORTS

Students desiring to receive the "Student Copy" of their grade report my mail must file a signed REQUEST FORM and a LEGAL SIZED STAMPED, SELF-ADDRESSED ENVELOPE with the Registrar's Office by Friday, May 30.

Student copies not mailed will be available from their adviser after June 13.

The Black Angus invites you to treat yourself to a special evening of fine food, drinks and musical entertainment.

Tuesday - Prize Night
Prize giveaway starting at 9:00

Wednesday - Ladies Night
½ price drinks for ladies.

Sunday - Thursday
Happy Hour 4:00 - 6:00
buy one, get one free

48's **BLACK ANGUS** Steak House & Lounge
520 West Mendenhall