

Agatha Christies, 'The Mousetrap'

Opening with an eight night run on Wednesday, April 30, is Agatha Christie's **The Mousetrap**. This gripping murder mystery presents a delightful change from the

Mrs. Boyle is portrayed by Stacey Kimble, who has done several fine portrayals at MSU among which are: Mrs. Peachum in **The Beggar's Opera**; the second

MSU theatre; he has also played the beggar in **The Beggar's Opera**; Roy Wild in **The Secret Affairs of Mildred Wild**; and Tony Bumpkin in **She Stoops to Conquer**. The mysterious Miss Casewell is portrayed by Gwenn Harris; Gwenn has given several distinguished performances at MSU as Thea in **Hedda Gabler**, as Antigone in Jean Anouilh's **Antigone**, and most recently as Clytemnestra in **Iphigenia in Aulis**. Playing Mr. Paravicini is Randy Doyle, who has appeared in **King Lear** and **Our Town**. Detective Sergeant Trotter is played by Todd Hoberecht; Todd is also new at MSU this year and has appeared in **She Stoops to Conquer** and in **Iphigenia** as a messenger and chorus member. The show is stage managed by Lori Eschler, who is assisted by April Goeferd. The set and lighting is designed by Ralph Kerr, and costumes are designed by Christine McLaren.

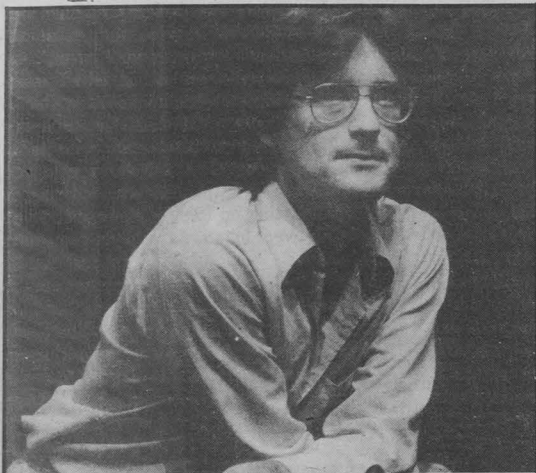
Showtime is 8:00 P.M. and tickets are available by calling 994-3904 or by going to the SUB Theatre Box Office between 9 and 5. The Theatre Arts Department is trying the new run to afford a greater opportunity for attendance by running two weekends. Ticket prices are \$2.50 for MSU students, \$3.50 for adults, and \$2.50 for children under 12; group rates are offered. Don't miss this production; it promises to provide some excellent entertainment.

anniversary of its opening in London.

The play revolves around a group of people snowbound in Monkswell Manor, a guest house just outside of London, run by Giles and Mollie Ralston. One of the group is a murderer and the others all could be the murderer's victim. With typical Agatha Christie suspense, the murderer strikes, leaving all

of the remaining residents suspecting one another.

The MSU production sports a promising cast, as well as being the first play to be directed by the Theatre Department's distinguished new faculty member, William Pullman. Mr. Pullman has been seen before in Bozeman with the Shakespeare in the Parks productions of **The Miser**, in which he played the leading role, and **A Midsummer Night's Dream** which he directed. In the role of Mollie Ralston is Susan Murdoch; she has appeared most recently in MSU productions as Cordelia in **King Lear**; the drunken whore, Betty Doxy, in **The Beggar's Opera**; and as Lady Macbeth in **Macbeth**. Giles Ralston is played by Scott Sieffert, who is a newcomer to the MSU stage, having appeared in several productions at Bozeman Senior High School. Christopher Wien is played by Loren Miller; Loren has done a considerable amount of competitive drama in high school; this is his first appearance at MSU.



New theatre department faculty member William Pullman is directing 'The Mousetrap' which will open Wednesday April 30th.

Ron Dauenhauer photo

past spring Shakespearean witch in **Macbeth**; and tragedies. **The Mousetrap** holds the record for the longest running professionally produced play; this year marks the 28th

with in **Macbeth**; and Mildred Wild in **The Secret Affairs of Mildred Wild**. Appearing in the role of Major Metcalf is Bruce Mathieu, a familiar face in

The Mousetrap is running from Wednesday, April 30th to Saturday, May 3rd, and again from Wednesday, May 7th to Saturday, May 10th.

Mary McClure, 19 and a MSU student, was killed last Saturday in a one-car accident three miles north of the Riverside Country Club on Springhill Road. The Exponent extends it sympathy to her family and friends and offers this poem as a memorial.

EASTER

(la resurrection)
by patti smith

flower and heart are equal. as one unfolds
the other is closing. the fist of charm.
the dance of fathoms. of voids. of veils.
layer after layer. wall after wall. there
is always more. there is always more after.

the scalloped edged of further valor.
the vigil of soldiers. foot and circular.
the waving tremors of empty warriors.
a thorn in the wound of love. of torture.
another immeasurable pain to suffer.

first dealing with entry into the spirit.
the wall is pierced and the will assaulted
is vaulted. is shimmied into. is fenced.
fencing defending the sheets of the flesh
winding and binding and then to relax.

seconds of suspension in the pass of pain
wailing. exhaling. passed thru the strange.
this is the formula. the force of the father.
the hand that extends. the heart that is bleeding
hard then harder then silent and beating.

in a space warm and glowing. infinite yet dense.
the tune of chain caught then stretched.
this is the communication of the future.
death is a dance. a ballroom. a glove
an extension of total abandon in love.

Public Education Campaign

Survival Summer

A broad coalition of student, environmental, peace, community, trade union, and religious organizations will soon launch a nationwide grassroots public education campaign known as Survival Summer.

Citing the large increase in military spending while social services are cut back, the development of "first-strike" nuclear weapons, and the continued construction of nuclear power plants, project coordinators hope to bring these "survival issues" to the forefront of the election campaign.

The specific positions promoted by the Survival Summer project include: the reduction of military spending with an increase of funds available for social programs; the elimination of nuclear power and cutbacks in the use of fossil fuels in favor of conservation and use of renewable energy resources;

a U.S. policy against the use of nuclear weapons and a comprehensive agreement with the Soviet Union against nuclear development; and, a rejection of draft registration, the military buildup, and U.S. armed intervention.

Encouraged by the growing anti-draft and anti-nuclear sentiment on college campuses, Survival Summer hopes to rely largely on student volunteers. "This should be the largest grassroots mobilization of students on militarism and nuclear issues in U.S. history," says Stephen Zunes, a recent Oberlin College graduate working on the Survival Summer staff. "We hope to train and mobilize thousands of students during the summer months for organizing in their local communities."

Modelled after the civil rights Freedom Summer of 1964 and the antiwar Vietnam

Summer of 1967, Survival Summer volunteers will do door-to-door canvassing, teach-ins and neighborhood forums, media work, community group presentations, local political participation, and other projects. Eight regional training centers are being established for training volunteers in organizing skills and providing background information on the issues.

The summer project also plans to tie in with national and regional demonstrations, including the April 26 March for a Non-Nuclear World in Washington, D.C., the Midwest anti-nuclear rally in Chicago June 7, the Black Hills Survival Gathering in South Dakota this July, and the actions at the Democratic and Republican national conventions.

"The response so far has been very encouraging," says Betsy Sweet, a recent Colgate University graduate and

Trampoline meets start tonight

by John Burgess

The first of three meets to select the 1980 U.S. National team in trampoline, double mini-tramp and tumbling is set to start tonight in the MSU fieldhouse.

Admission is being charged to cover the expense of the judges. For adults it is \$4 for the two-day event or \$2 for a session. For students it is \$2 for the two days or \$1 for each session.

There are three sessions planned: one tonight and two tomorrow. The schedule is as following:

Session I Friday, April 25.

6:00 p.m. Prelims - Double Mini Tramp

7:30 p.m. Prelims - Tumbling

9:00 p.m. Prelims - Syncho Tramp-two tramps

Session II Saturday, April 26.

11:00 a.m. Prelims - Trampoline

1:00 p.m. Finals - Syncho Tramp.

2:00 p.m. Finals - Double Mini Tramp.

Session III Saturday, April 26.

7:00 p.m. Finals - Tumbling.

8:30 p.m. Finals - Trampoline.

The event is sponsored by Mac Rugheimer and ASMSU.

Following is a brief description of the events and how they are judged.

Trampoline

A competitor may bounce as many times as desired to gain height and stability but after beginning the first skill only ten more bounces are allowed. Each of the ten skills must be different (repeats are not allowed). Example: A back flip with the legs tucked is a different skill from a back flip in either the layout or pike position.

Each competitor must attempt the same compulsory routine which is judged on form only. All competitors are allowed at least one optional routine. Optional routines are judged on BOTH FORM AND DIFFICULTY.

The object is to combine as many flips and twists in ten bounces as possible while maintaining the best possible form. The preliminary competition consists of the compulsory and one optional.

In the final competition the

top ten performers are allowed a second optional. The competitor having the highest TOTAL score of all three routines is the winner. The competitor with the lowest score performs first in the finals.

Synchronized Trampoline

The same rules apply but the competition consists of only the compulsory and one optional. A team is judged on FORM, DIFFICULTY AND SYNCHRONIZATION. Both competitors must perform the same skills in the same order.

Double Mini Tramp

During each turn (called a pass) a competitor may touch the bed either two or three times - however, only two skills are allowed per pass. If three bounces are used the free bounce cannot be taken between the skills.

The preliminaries consist of three passes. The top ten competitors are selected for the finals (two additional passes).

In the finals the competitor with the lowest preliminary

(Continued to page 16)

UPINEWS SUMMARY

WALDHEIM CONVINCED RELEASE IS NEAR

U.N. Secretary General Kurt Waldheim told American newspaper publishers in Honolulu he is convinced the American hostages in Tehran will be released...and that Americans should continue to show patience.

REFUGEES PICKED UP BY BOATS

From tiny pleasure craft to big charter fishing vessels...scores of boats traveled the 90 miles between the United States and Cuba today. They plan to pick up refugees from the Peruvian embassy in Havana...even though the State Department says the operation violates U.S. immigration laws. The sealift was organized by the Cuban exile community in southern Florida.

WHO'LL DELIVER THE STORKS?

If the stork delivers babies...workers at the Louisville Zoo may soon learn who delivers the stork. The zoo's two storks are taking turns sitting on four eggs...expected to hatch in mid-May--a rare event for storks in captivity.

EL SALVADOR KILLINGS CONTINUE

The killing goes on in El Salvador. The bodies of 18 men were found just west of the capital of San Salvador. All had the initials "E-M" carved on their chests. Those letters represent the initials of a right-wing death squad.

DEAD GYPSY ROBBED

Three days after he died...thieves in Novara, Italy, Wednesday pried open the crypt of the so-called "King of Italian Gypsies"...removed a 20-thousand-dollar gold and ruby ring and gold chains from his body...and made off with about four-thousand dollars in cash left in his coffin.

PRESIDENTS MEET OVER OLYMPICS

The president of the International Olympic Committee says he's preparing to meet with the Presidents of the United States and the Soviet Union in an effort to diminish the threat of a widespread boycott of the Moscow Games this summer.

THE BEST CHEESE CAKE IN TOWN!

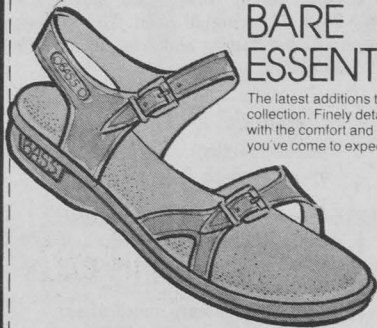
Formerly the Old World Deli.

LUCKY'S DELI

242 East Main
587-4100

BARE ESSENTIALS.

The latest additions to the Sunjun collection. Finely detailed calfskin with the comfort and durability you've come to expect.



Bass

SUNJUNS

Egbert's
BOOTS & SHOES

DOWNTOWN BOZEMAN • FREE PARKING
Hours: Mon. - Sat. 9:00-5:30

ASMSU LECTURES

PRESENTS:

THE AMAZING KRESKIN



Tickets are available;
SUB Activities Desk, Programming Services Office, North Hedges
Infants not allowed. For More Info: 994-3591

May 1, 1980 Ellen Theatre, 8:00 P.M.
M.S.U. Students \$1.50
Others \$3.00

MSU Cheerleader to attend camp

Daryl Schmidt has never attended a cheerleading camp in his life. Yet he'll be instructing several this summer.

Schmidt, a junior in electrical engineering at Montana State University, is one of MSU's 12 cheerleaders. And he's one of 70 college cheerleaders from across the nation selected by the International Cheerleading Foundation to instruct summer cheerleading camps for high school and college cheerleaders.

"I always thought cheerleading was girls' stuff until I saw the men cheerleaders perform at an MSU game a couple of years ago," Schmidt, a 1977 graduate of Dawson County High School in Glendive, said. "Cheerleading is a sport in itself and it involves a lot more than just jumping up and down and smiling a lot."

As an ICF instructor, Schmidt will teach cheers, chants, double stunts, pyramid building and pompon routines. He'll also give lectures to camp participants on fund raising, spirit and pep rally ideas, crowd control, and captain and sponsor duties.

Schmidt will instruct eight to 10 four-day camps this summer.

"There are five regions with about nine or 10 states in each region," he said. "I'll be assigned to one region and will instruct camps in that region. I'm hoping to get placed in a region other than the Northwest so I can see a lot of the country. I've never

had a chance to travel much so it will be a good experience in that respect, as well."

Schmidt, 21, applied for the instructor position in January and was notified of his selection earlier this month. He was chosen from a field of several hundred applicants enrolled in colleges

throughout the United States.

Schmidt, who's been involved in gymnastics in high school and college, will go through a week of training at Rockhurst College in Kansas City, Mo., in early June.

"We'll learn at the training session all the things we'll be teaching throughout the summer," he said. "Teaching the summer camps will be a lot of work because we will

(Continued to page 16)



Courtesy photo

"I was really surprised when I got it because I'd only been a cheerleader at MSU for a year and I've never even had the chance to participate in a camp myself," he said.

The ICF based its selection on the applicants' background in gymnastics and cheerleading and their signs of leadership and teaching abilities.

Ride your bike for diabetes

On May 17, from 9 to 3, Bozeman will hold its annual **DIABETIC BIKE-A-THON**. There will be four mileage routes- 52, 29, and 13 miles and a new 5 mile, around-town route designed for youngsters. Riders will originate at McDonald's and may circle the route as many times as you wish. Prizes, locally and statewide, will be awarded. Grand prize, statewide, will again be a trip to Disneyland for a family of four. The grand prize is awarded to the rider who raises the most money. Other prizes will be given in each age category to those who raise the most money, ride the most miles or have the most sponsors. The age categories include 18 years and up, ages 12-17 and 11

years and under.

You will be participating in a ride that bikers all over Montana will be in. This is a combined effort to raise funds for research to find a cure for diabetes, to help lengthen the lives of diabetics, help pay for a summer camp for diabetic children in which they learn how to better cope and control their diabetes, as well as other programs.

There is a category for everyone, so get out your bike and join in for a fun time! Sponsor sheets can be picked up at any Bozeman sports shop or on campus at the SUB main desk. For further information, contact **Judy Thayer** at 587-2263 or 994-2550. Double your pleasure-pedal for yourself and diabetes.

THE KLIP JOINT'S Spring Special

Warm and Gentle Permanent (cut included)

Regular \$38.00 NOW \$28.00

Call for an appointment 587-1401

708 W. Main

9:15-6:00
MON.-SAT.
OPEN FRIDAY
NIGHTS 'TIL 9!



Price Limited to Stock on Hand



TENNIS SALE

good thru Monday, April 28th

Durafiber Tennis Racquets

	REG	SALE
Graphite	179 ⁰⁰	99 ⁹⁵
XT Baron	106 ⁰⁰	69 ⁹⁵
XR Graphite	100 ⁰⁰	69 ⁹⁵
Lite	86 ⁰⁰	49 ⁹⁵
Duraluminum	57 ⁰⁰	29 ⁹⁵

HEAD • DAVIS • WILSON • YAMAHA



VASQUE HIKING
BOOT SALE
40% OFF

Untouchable in quality
and workmanship



FREE

STAYTITE
NYLON STRING
with purchase of
any tennis frame

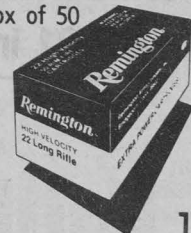
WILSON OR PENN
TENNIS BALLS



Can of 3
2¹⁹

REMINGTON HIGH
VELOCITY AMMO

.22 long rifle
Box of 50



129

The ASMSU Performing Arts Committee
Proudly Presents



AMADEUS STRING QUARTET

Wednesday, April 30, 1980
8:00 p.m. - Ellen Theatre

MSU Student \$3.00 Non-MSU Student \$5.00

Tickets may be obtained at the Student Activities Office in the Strand Union Building on campus, Cactus Records and Tapes, and Budget Tapes and Records. For more information call 994-3591.

SHOP FRIDAY NITE 'TIL 9:00

The MUSTARD SEED

by C.J. Kelly
Campus Minister

Chauncy Gardener who is really Peter Sellers in the movie "Being There" is a contemporary Christ-figure who gains some of his notoriety by his claim that he doesn't read the newspapers. The truth is he can't read. Were Chauncy Gardener for real, such illiteracy might be regarded as a blessing, given the gloom and doom which fills the news media these days. Every day, it seems, the media confronts us with either worsening conditions or new reasons to accept the hopelessness of life in these days.

The danger of the widespread atmosphere of discouragement over the depressing situations that have befallen us is well made by this tale. A policeman rushed out to a man on the Golden Gate bridge just in time to stall his intended suicidal leap. He talked him into making a deal. The officer would listen to the jumper's story and then he would have his say. After a brief conference, so the story

goes, they climb on to the rail together and both of them jump off the bridge. Gloom and doom are infectious.

But so are hope and joy. A very small group of people in the cynically exhausted and despiritualized climate of first century Rome were able to set it afire wherever they moved because of the contagious joy that came forth from their lives.

The great Jewish writer of a generation ago; Sholem Asch, in his novel **The Apostle**, describes an unforgettable scene which was inspired by an event in the early church. As Asch describes the scene, hundreds of people have been lowered into a dungeon through a small trap door. There in a horror-laden atmosphere they await death. Suddenly into this indescribable place of darkness and despair a man is lowered. He is singing songs of praise and thanksgiving to God. The prisoners at once recognize him as Paul, the apostle of the new way. This word spreads among them like wild fire. The spirit of this new prisoner is so contagious that soon all of the doomed prisoners are singing, singing songs of praise and joy.

Joy has always been the true mark of the Christian.

Perhaps the most damaging indictment of Christianity in modern times was made by an observant philosopher-critic when he said, "Christians have no joy."

St. John tells us that in the fear-filled room where they were hiding after the crucifixion of Jesus, suddenly "the disciples rejoiced." He was there, in their midst! And he gave them their commission, "As the Father has sent me, so I send you." He sends us—to share with others his hope and joy. Why not let others discover Him in their midst through our sharing with them something that is both news and good—the Good News that he will not leave us orphans and so we can rejoice, today and always!

Home Ec granted accreditation

The Department of Home Economics at Montana State University has been granted accreditation for another two years by the American Home Economics Association.

The action is especially significant in light of action currently being taken by the Board of Regents.

(Continued to page 16)

Schwinden discusses issues facing state

by Michael Johnson

Montana Lieutenant Governor Ted Schwinden was the attraction of a public forum held Monday night in the SUB Ballroom.

Feeling confident about his four-way race for the Democratic gubernatorial nomination Schwinden said he has attracted a good staff and "I think we're going to win".

When reminded that his major opponent in the primary battle is incumbent Governor Tom Judge who has a reputation as a good vote getter, Schwinden facetiously answered that he was sorry but Judge would suffer his first campaign loss in June.

The Lieutenant Governor spent most of the time discussing the issues facing Montana.

When a listener said they thought MSU and Montana Tech in Butte were getting a "raw deal" from the Legislature's funding formula, Schwinden conceded that funding formulas are not good for people-type problems but the Legislature uses them and rolling

averages of enrollment to get a handle on how much to budget the institutions.

The two schools have increasing enrollment whereas all other units of the Montana University System have declining enrollments.

He said more money is needed for Montana public employees adding "there is an anger there that I have never seen the likes of before".

An audience member mentioned restoring enthusiasm to public employees with pay increases but asked how more money could be raised for the university system.

Schwinden was certain that more moeny would be available but there would not be enough to satisfy all demands. He added that he did not equate enthusiasm for a job with money.

With his thoughts on energy development in Montana he said the fundamental problem is more of politics than energy. However, he did say Montana has a responsibility to share its resources adding that the

(Continued to page 16)

FREE DELIVERY 587-9002



LOCATION 19 TAI LANE Next door to Locksmith Above the Slide Co.

We not only have the BIGGEST Pizza in town - BUT NOW ! -

THE BIGGEST AND BEST

SUBS AND HERO'S

No cheap FILLERS and LOW quality meats and cheeses

WE SELL THE BEST

SANDWICH SPECIALS

GOOD TILL MAY 2

Jumbo - 21 inch hero or sub \$4.35 Reg. - 10 inch hero or sub \$2.25

DAILY SPECIALS

MONDAY 6:00 - 9:00 pm	SPAGHETTI NIGHT	\$2.69
TUESDAY 6:00 - 9:00 pm	PIZZA NIGHT	\$2.99

HAPPY HOUR

FRIDAY 3:00 - 5:00 pm	PITCHERS	\$1.25
-----------------------	----------	--------

FREE DELIVERY 587-9002

19 TAI LANE Next door to Locksmith; Above Slide Co.

SUBJECTIVELY SPEAKING

Letters to the Editor



Election time is here

To the editor:

Election time is once again upon us and the students of Montana State University are being called to elect into office, fellow students who they feel can represent the wishes of the student body. It has been my pleasure to have served as your student body Vice President in this last year. I thank all of you for the chance to show my interest and dedication in making life a little easier and perhaps more enjoyable for all students who attend MSU.

I would like to take this opportunity to ask your support and votes for a few people who I have worked with in the past and are running for elected office. Amber Webb is the present

head of Program Board and is a candidate for ASMSU President. I know of very few people, if any who have shown as much concern and dedication for getting things done for ASMSU. In the past few years Amber has worked hard to bring the programming section up to higher standards and credibility. It hasn't been easy, but Amber has done a commendable job. The office of ASMSU president will be very demanding in this next year and without the leadership of a person like Amber all that we have worked for may start to slip away. I trust and believe in Amber Webb and I am asking you to support and vote for her this Friday.

There are also senate seats open for election this quarter and over twenty candidates for the offices. There are three candidates with whom I have worked and openly support for their election into office. Marc Strahn has served in a very influential manner in the last year as a member of the Constitutional Appeals Committee. His concern and knowledge could prove valuable in the next year as the senate deals with issues ranging from financing

to constitutional rulings. Bill Bickle also has been very active in ASMSU in the past year and a half in the area of Finance Board. His ability to think situations out analatically could provide a needed calm head in times of high tension and emotion in senate meetings.

Jeanne Rankin has served for the past year on the Student Senate and has been very outspoken when critical issues have come up such as budgeting programs for the next year. Jeanne is the only senator seeking re-election for a second term. To simply stay on Senate for a single year takes a great deal of patience, fortitude and dedication. When Jeanne filed for a second term, it showed that she is still concerned what happens on Student Senate. It gives me great pleasure to endorse her for her second term and urge you to return this experienced student leader to Senate.

I once again thank you for the opportunity to serve you in the last year. Please remember to get out and vote Friday, in an election of this type your vote can make a difference.

Scott G. Riek
ASMSU Vice-President

To change or not to change— that is the question

Now is your chance to change or not change the makeup of your elective body. Today's election will determine who will run and how they will run ASMSU next year, and you can make the difference that will count.

Traditionally the voting rate has been very low in ASMSU elections, low enough to allow a minority control the majority of the senate seats.

Also you will be selecting three people to three of the most powerful positions in ASMSU: ASMSU Business Manager, President and Vice President. Unfortunately few are competing for the positions, but there are some with excellent qualifications.

Bookstore representatives are also on the ballot and will have a large say in the Bookstore policies.

For whom you vote does not matter, but you need to voice your opinion through this election. Carefully examine the candidates and the issues and make an informed choice of what you want for next year.

You can make a difference, so vote!

Activities 'rob Peter to pay Paul'

To the editor:

We are somewhat bewildered by the willingness of MSU students to allow a handful of ASMSU junior achievers to continue to expropriate roughly \$400,000 annually and distribute the money to programs of dubious value to the student population as a whole. It appears to us that the basic motivation is enhancement of their own resumes rather

than service to the students. Now, with the coming of the ASMSU elections, a new coalition of junior achievers is being exhorted by the EXPONENT editor to increase funding of various sports and clubs.

While we can identify with the enjoyment and fraternity found in sports, clubs, and other activities sponsored by ASMSU, we fail to see why those with little or no interest

in such activities are coerced into subsidizing them. If these activities are as valuable to those involved (and to some MSU students who are non-participants) as we are led to believe (EXPONENT editorial, April 11), then clearly those who stand to benefit should be willing to endeavor to raise their own funds. Further, if some MSU students who are non-participants also benefit, then a payment mechanism such as admission fees can be used so that **only** those who find the activities of merit need pay for them. We suspect that if **only** those who benefit pay for the activities then the amount of support for these activities that actually exists at MSU will be revealed to be significantly lower than the EXPONENT editor would have us believe. We feel that working for things of value is worthy of encouragement at every opportunity and wholeheartedly commend those sports and clubs that do so.

While political channels are an easier alternative than working for your own support, people who use political

channels must be confronted with the fact that, quite simply, they are invoking the rule of force when **all** must pay for what they alone might desire. It is this "rob Peter to pay Paul" mentality that drives much of what ails America today. While such programs in Washington, D.C. have clearly garnered the support of the vocal minority of "Pauls", it is increasingly apparent that the nation's capitol is not the only place where this mentality of theft is encroaching upon individual liberty.

Rod Fort
Bill Nelson
Steve Bender
Craig Simons
John McArthur

Write-in Wolfram

To the Editor:

Both Mike Meuli and Amber Webb have proven themselves capable as an ASMSU Senator and Director of Program Board, respectively. But the BEST candidate for ASMSU President is a write-in---GORDON WOLFRAM.

As a student voter I'm faced with choosing between two very good candidates or writing-in GORDON WOLFRAM who BEST represents the qualities which are necessary for the next ASMSU President.

I have been a Senator under five ASMSU Presidents and I have never been as sure about any presidential candidate as I am

about GORDON WOLFRAM.

GORDON has proven himself time and again as an outstanding leader and worker both as General Manager of KGLT and Director of Media Board. Any project GORDON has undertaken has always been done top-notch and has earned him the respect of those who he has worked with.

While GORDON has served the students through his work with the ASMSU Media, he has also been directly involved with the Senate. GORDON's thoroughness, fairness and dedication have established a fine credibility and rapport with Senate that will be beneficial in his ability to best serve the students.

GORDON is very level-headed and quite pleasant to work with. This not only comes in handy for work on campus, but is crucial for MSU's success in dealing with legislators at next year's session. Neither Mike Meuli nor Amber Webb would be unable to deal with the legislature, but GORDON would be the MOST effective.

I urge my fellow students to write-in GORDON WOLFRAM (and then be sure to check the box by his name) for ASMSU President.

Sincerely,
Rick Boylan
ASMSU Senator
Sr. Political Science

MSU Exponent

editor	Nancy Lee Espelin McGee
managing editor	Shaun Doig
news editor	John Burgess
sports editor	Mark Beatty
photo editor	Donna Zook
assistant photo editor	Julie Evans
staff writer	Scott Peters
darkroom tech	Alan Thometz
writers	photographers
Julie Fletcher	John Vance
Michael Johnson	Robin Brown
Susy Roegen	Bob Doernbach
	Kathy Burke
	Steve Hickman
layout assistant	Randy Boschee
copy editor	Candy Atkinson
proofreaders	Ginger Hula
business manager	Terry Bennett
assistant business manager	Mark Beatty
ad salespeople	
Bernie Koenig	
Sue Selterquist	
Frank Jurenka	

The Exponent is an independent, student written and student managed newspaper at Montana State University, Bozeman. The opinions expressed herein are not necessarily those of the university or the student body. Published twice weekly except holidays and final week during the school year by the Associated Students of Montana State University. Known office of publication: The Exponent, Student Union Building, Montana State University, Bozeman, MT 59717. Second class postage paid at Bozeman, MT. By mail per year \$7.50.

HIGH SCHOOL SENIORS WELCOME TO MSU

GET THE FACTS ON AIR FORCE ROTC



AIR FORCE ROTC— HERE ARE THE FACTS

When you're discussing something as important as your future, it's urgent that you get the straight facts...and that you understand them. Air Force ROTC can be an important part of your future. We would like to outline some of the facts and invite you to look into gathering more.

It's a fact: the Air Force needs highly-qualified, dedicated officers...men and women. It's a fact: we need people in all kinds of educational disciplines. It's a fact: we're prepared to offer financial help to those who can qualify for an Air Force ROTC scholarship.

Get together with us and discuss the program. We'll give you all the facts. It could be one of the most important talks you've ever had with anyone about your educational plans.

- Scholarships (that pay all tuition, lab fee, and book expenses)
- \$100 per month tax free allowance
- Flying Instruction
- Student Travel
- Graduate Study

DROP BY ROOM 201 HAMILTON HALL AND DISCUSS OUR PROGRAM
OR PHONE 994-4021 OR 994-4022

AIR FORCE

ROTC

Gateway to a great way of life.

Rifle Club takes first honors once again

The Intermountain Shooter's League has completed its 1979-80 season, with the MSU Rifle Club taking first honors once again. The A team's first place traveling trophy came back to Bozeman from the Banquet Match in Pocatello to what has been its home for the past three years. Numerous other awards and honors were brought home also.

MSU's B team placed first among the B team standings, and the MSU Woman's team placed second in the women's competition. League records that were set by MSU team members in this 1979-80 season are: High Team Score of 2214, and High Individual Score of 560 set by Russell Hunnewell. In addition to these current records, MSU team members also hold League records that were set in preceding seasons. They are as follows: High Team Score of 2127 set in 1977-78, High Individual Average of

554.5 set by Guyle Guderian in 1977-78, and High Kneeling Score of 196 set by Guyle Guderian in 1978-79. At the Banquet Match in Pocatello, April 12, John Hawkins won the High Prone award for his score of 197.

The members of the MSU Rifle Club who have participated competitively this season are: Mac Clark, Guyle Guderian, John Hawkins, Dave Erickson, Russ Hunnewell, Norm Comfort, Roald Christensen, Jim Maunder, Bib Griffin, Sara Ross, Debbie Beatty, Barb Cook, Karlen Moe, Rob Garrison, and Ruth Horneck. These people would like to thank the following people for the contributions of their time, knowledge, and help to the Club: John R. Foster - Coach and alias "Foster Dad", Capt. Dave Jackson - ROTC Advisor and "follower", Swede Erickson - for his contributions and friendship, and Ken Bruwelheide and Tom Rowe for their support and advice.

MSU Student dies

Mary McClure, a 19 year-old Sophomore in business marketing, died Saturday in a car accident three miles north of Riverside Country Club on Springhill Road.

She was a member and rush chairman of the Chi Omega Sorority and also was a little sister to the Sigma Chi Fraternity.

The accident occurred on

the way back from a "sneak" party. Four other students, Randy Holland, Jodie Hoines, Robin Smith, and Cheryl Slocum, were also in the car. They were treated and released after the accident.

The car left the road, throwing Ms. McClure from the car. The car rolled, pinning her underneath the car.

She was the daughter of Lizabeth and George McClure. George McClure is a professor in the Architecture department. The Department discontinued operations Monday and Tuesday in deference to the tragedy.

McClure was noted for her early and continuing involvement in student activities. She was a member of the ASMSU Consumer Affairs Committee and a student orientation leader.

Letters Cont.

(Continued from page 15)

office. They are John Burgess and Mark Beatty. I have worked closely with these men on the Exponent and I know each has awareness both of campus needs and the structure of the ASMSU senate, and both would be effective senators.

Joining me in supporting these candidates are the entire Exponent staff.

I urge everyone to carefully consider the merits of these two outstanding candidates. It is rare that you find their combination of political experience, idealism, and personal integrity in student senate candidates.

They want to serve. How about giving them a chance?
Nick Geranios

Support Strahn

To the editor:

For the past year, I have been fortunate enough to

serve as the Student Body Student Accountant and as a Student Senator. Next week I will be turning my senate seat over to another individual who shall be elected by you.

I have a keen interest in the successful future of ASMSU, and it is in this interest that I would like to specifically endorse one senate candidate in particular, Marc Strahn.

In my past three years in ASMSU I have seen a lot of people become senators who didn't have any concept of the workings of ASMSU and it showed in many of the decisions of the senate. There is only one incumbent student senator (Jeanne Rankin) running for re-election and therefore it is of the utmost importance to have as many of the new senators as possible be familiar with the workings of ASMSU, and Marc Strahn has this.

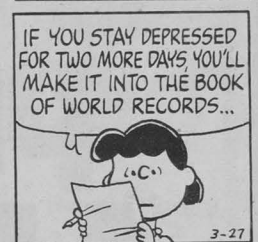
Marc has been involved in the ASMSU Judicial Council and served on the ASMSU Constitutional Appeals Committee. Marc has also attended numerous senate meetings as well as several of the recent budgeting sessions.

Besides having a great knowledge of ASMSU Marc is a responsible and hard working person and deserves your vote this Friday April 25th.

Sincerely,

Cindy Huck "Huckers"
ASMSU Senator & Student Accountant

PEANUTS®



by Charles Schulz

TEA & EGGROLL

OPEN 11:00 A.M. DAILY

GIVE YOURSELF A BREAK AND A SUNDAE



25¢ OFF

Large Sundaes

Offer Expires Sunday, April 27, 1980

JUST NORTH OF MSU CAMPUS

917 W. College 587-1736

THE CREAMERY

THE GEORGE

Every Monday Night: Backgammon tournament

\$25⁰⁰ First prize

\$10⁰⁰ Second prize

Prizes may be higher, depending on number of entrants

Bring your boards if possible. \$1.00 entry fee

Starts at 8:00

Jam session starts at 6:00 on Sundays

Join the "George" and the Friday Afternoon Club.

1:00 to 7:00 every Friday.

Reserve the Mine for your Private Parties

WHAT COULD THE ARMY POSSIBLY OFFER A BRIGHT PERSON LIKE YOU?

Drop your guard for a minute. Even though you're in college right now, there are many aspects of the Army that you might find very attractive.

Maybe even irresistible. See for yourself.

MED SCHOOL, ON US

You read it right.

The Army's Health Professions Scholarship Program provides necessary tuition, books, lab fees, even microscope rental during medical school.

Plus a tax-free monthly stipend that works out to about \$6,450 a year. (After July 1, 1980, it'll be even more.)

After you're accepted into medical school, you can be accepted into our program. Then you're commissioned and you go through school as a Second Lieutenant in the Army Reserve.

The hitch? Very simple. After your residency, you give the Army a year as a doctor for every year the Army gave you as a med student, and under some conditions, with a minimum scholarship obligation being two years' service.

INTERNSHIP, RESIDENCY & CASH BONUSES

Besides scholarships to medical school, the Army also offers AMA-approved first-year post-graduate and residency training programs.

Such training adds no further obligation to the student in the scholarship program. But any Civilian Graduate Medical Education sponsored by the Army gives you a one-year obligation for every year of sponsorship.

But you get a \$9,000 annual bonus every year you're paying back medical school or post-graduate training.

So you not only get your medical education paid for, you get extra pay while you're paying it back.

Not a bad deal.

A GREAT PLACE TO BE A NURSE

The rich tradition of Army Nursing is one of excellence, dedication, even heroism. And it's a challenge to live up to.

Today, an Army Nurse is the epitome of professionalism, regarded as a critical member of the Army Medical Team.

A BSN degree is required. And the clinical spectrum is almost impossible to match in civilian practice.

And, since you'll be an Army Officer, you'll enjoy more respect and authority than most of your civilian counterparts. You'll also enjoy travel opportunities, officer's pay and officer's privileges.

Army Nursing offers educational opportunities that are second to none. As an Army Nurse, you could be selected for graduate degree programs at civilian universities.

ADVANCED NURSING COURSE, TUITION-FREE

You get tuition, pay and living allowances. You can also take Nurse Practitioner courses and courses in many clinical specialties. All on the Army.

While these programs do not cost you any money, most of them do incur an additional service obligation.

A CHANCE TO PRACTICE LAW

If you're about to get your law degree and be admitted to the bar, you should consider a commission in the Judge Advocate General Corps. Because in the Army you get to practice law right from the start.

While your classmates are still doing other lawyers' research and other lawyers' briefs, you could have your own cases, your own clients, in effect, your own practice.

Plus you'll have the pay, prestige and privileges of being an Officer in the United States Army. With a chance to travel and make the most of what you've worked so hard to become. A real, practicing lawyer. Be an Army Lawyer.

ROTC SCHOLARSHIPS

Though you're too late for a 4-year scholarship, there are 3-, 2-, and even 1-year scholarships available.

They include tuition, books, and lab fees. Plus \$100 a month living allowance. Naturally they're very competitive. Because besides helping you towards your degree, an ROTC scholarship helps you towards the gold bars of an Army Officer.

Stop by the ROTC office on campus and ask about details.

UP TO \$170 A MONTH

You can combine service in the Army Reserve or National Guard with Army ROTC and get up to \$6,500 while you're still in school.

It's called the Simultaneous Membership Program. You get \$100 a month as an Advanced Army ROTC Cadet and an addi-

tional \$70 a month (sergeant's pay) as an Army Reservist.

When you graduate, you'll be commissioned as a Second Lieutenant, but not necessarily assigned to active duty. Find out about it.

A BONUS FOR PART-TIME WORK

You can get a \$1,500 bonus just for enlisting in some Army Reserve units. Or up to \$2,000 in educational benefits.

You also get paid for your Reserve duty. It comes out to about \$1,000 a year for about 16 hours a month and two weeks annual training.

And now we have a special program to help you fit the Army Reserve around your school schedule. It's worth a look.

A SECOND CHANCE AT COLLEGE

Some may find college to be the right place at the wrong time for a variety of reasons. The Army can help them, too.

A few years in the Army can help them get money for tuition and the maturity to use it wisely.

The Army has a program in which money saved for college is matched two-for-one by the government. Then, if one qualifies, a generous bonus is added to that.

So 2 years of service can get you up to \$7,400 for college, 3 years up to \$12,100, and 4 years up to \$14,100. In addition, bonuses up to \$3,000 are available for 4-year enlistments in selected skills.

Add in the experience and maturity gained, and the Army can send an individual back to college a richer person in more ways than one.

We hope these Army opportunities have intrigued you as well as surprised you. Because there is indeed a lot the Army can offer a bright person like you.

For more information, send the coupon.

Please tell me more about: (AM) Medical School and Army Medicine, (AN) the Army Nurse Corps, (AL) Army Law, (FR) ROTC Scholarships, (SS) Army Reserve Bonuses, (PC) Army Educational Benefits.

NAME _____

ADDRESS _____

CITY _____

STATE _____

ZIP _____

SCHOOL ATTENDING _____

DATE OF BIRTH _____

Send to: BRIGHT OPPORTUNITIES, P.O. BOX 1776
MT. VERNON, N.Y. 10550

THIS IS THE ARMY

Note: To insure receipt of information requested, all blanks must be completed.

AROUND CAMPUS

Senior women needed

On Sunday May 4 the 58th Annual Women's Day of recognition will be held in the SUB Ballroom starting at 1 p.m. One of highlights of Women's Day down through the years has been the "Breaking of the Ties" ceremony at the beginning of the program.

This ceremony consists of a processional of senior women and their wand carrier (an underclassman who they will symbolically pass on their responsibilities and

privileges as a student). After the ceremonial cutting of the ties the senior woman gives up her wand to her wand carrier.

Senior women who are interested in partaking in this traditional ceremony are responsible for finding an underclassman to serve as their wand carrier. They must also fill out an application form and have it returned by Thursday May 1. Applications are available at the Office of Student Affairs and Services.

Nominations being requested

Nominations are requested for one faculty position on the **Committee on Committees** to replace Mac Rugeimer whose term expires at the end of spring quarter. This committee is charged with nominating persons for membership on Faculty Council Committees, making nominations for other university committees as requested, and recommending membership on university wide search committees. Nominations for this position are requested from the following colleges or schools: Agriculture, Arts & Architecture, Business and Nursing.

Please send written nominations or expressions of interest to Audrey Jean Haight, Committee on Committees, Renne Library, by Friday May 2, 1980.

Larry Nielsen to perform

Larry Nielsen, a junior in Music Education, will be performing on tympani, marimba, xylophone, snare drum and more at a recital on Sunday, May 4.

The percussion recital is set for 8:15 p.m. in the CAC Recital Hall. Admission is free.

Speech team completes season

by Lisa B. Hanson

The Montana State University Speech Team completed their 1979-1980 competition by attending the 35th Annual Big Sky Speech Tournament April 18 and 19 in Missoula.

The team made a good showing at the tournament. Mark Seiffert placed 3rd in Montana Style Individualized Impromptu, with David Shontz and Ruth Sass placing as finalists. In Oral Interpretation, Patty Hostetter was a finalist. Ruth Sass, an exchange student from Moorhead State University in Moorhead, Minnesota, was a finalist in Persuasive Speaking. Mark Strahn received honorable mention for the 4th Annual TIBTS Award. Coach and Mrs. Les Lawrence were awarded honorary status as UM Debaters in honor of Coach's semi-retirement.

Regional Tournament in Coeur d'Alene, Idaho March 22-25. The following competitors received certificates of achievement: Bill Bickle, Superior in Extemporaneous Speaking and Good in Persuasive Speaking; Russ Crawford, Excellent in Extemporaneous Speaking; Lisa Hanson, Excellent in Expository Speaking; Dan Saint, Excellent in Expository Speaking; Ruth

Sass, Superior in Persuasive Speaking and Good in Oral Interpretation; David Shontz, Good in Extemporaneous Speaking; and Mark Strahn, Good in Extemporaneous Speaking.

The 1979-1980 season was a good one for the Montana State University Speech Team, and they look forward to renewed competition in the fall.



Library shows films

Tuesday, April 29. Noon, the films **FOOD FOR MAN** and **IRRIGATION WATER MANAGEMENT** will be shown in the basement of the Renne Library, Room 17. **FOOD FOR MAN** gives a quick look at the past, present and future of agriculture including developments such

as cloning, and farming in space and the sea. **IRRIGATION WATER MANAGEMENT** shows the components of irrigation systems, discusses soil factors which influence irrigation,

and describes a variety of methods and equipment suitable for proper water management techniques.

Free and open to the public. For further information, contact Dick Luce, 994-3110.

Renne Library having special art exhibition

In the M.S.U. Renne Library is a special exhibition of oil and water color paintings as well as some graphics by Montana artist H.H.V. Ramon Exhibit is presented in part by Homestead Studio and shows through April 30th.

Arts and Exhibits

ASMSU Arts & Exhibits committee presents two exhibitions in April: **We Loved Wyoming** an exhibit of cemetery humor through Bob Greger's photography, now in the Exit Gallery till April 25. Also a special exhibition of oil and water color paintings. By Montana artist H.H.V. Ramon showing in Main lobby of MSU Renne Library, April 11th through April 30th.

MIDTERMS ARE HERE

•• DON'T LET THEM LEAVE YOU LOST ••

The ASMSU Tutorial Program has tutors available in a wide variety of subjects. If you're having problems, Get Some Help.

For more info

At the **Eagles Club**
Steak dinners every Saturday
through April and May \$6.00
Starts at 6:30
16 oz. T-BONE
with all the trimmings

Live music Thursday, Friday, and Saturday
'MidNite Hour' Open Club

Take Cover

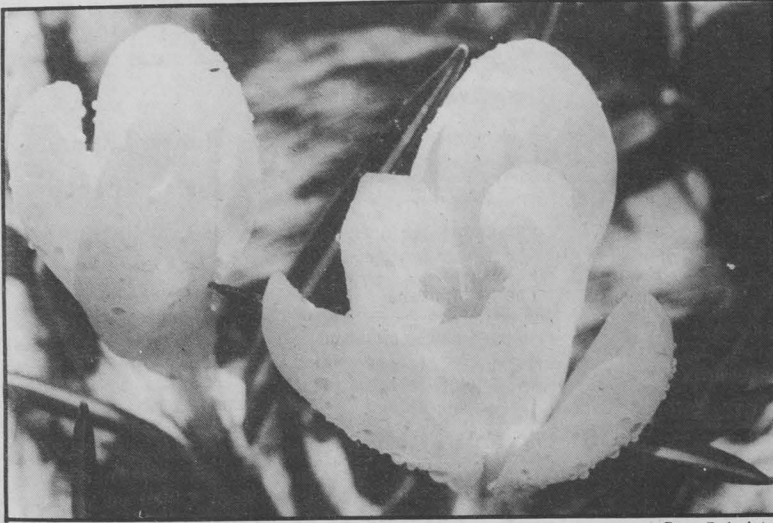
With ROUGHRIDER SEAT COVERS

The ROUGH-RIDER covers you from summer sun and winter frost.

Take cover with our kid-proof, machine washable seat covers. The custom tailored covers for the bench or buckets in your car or truck will be ready in only 2 hours. Your custom tailored fit will be padded with a 2 year guarantee. Starting at only \$41.00.

12 South Church • Pzeman, MT 59715 • 406-587-4001

Springtime in the Rockies.....



Donna Zook photo



Donna Zook photo

SLIDE

15 TAI LANE

7-1707

CO.

— 13 BY MONTHLY CALENDER —



MONDAY,
April 28

• WINE NIGHT — • GLASS-50¢
• 60oz PITCHERS-3.50

• HAPPY HOUR — DRAFT-40¢ • BOTTLES-70¢
530-800 • PITCHERS \$1.75


TUESDAY, April 29 Intramural Drinking—Ounce a minute teams

• HAPPY HOUR—600-800 • Details at Bar

WEDNESDAY, APRIL 30

• HUMP DAY
• BUCKHORN CANS-40¢
• BUCKHORN T-SHIRT GIVEN AWAY EVERY HOUR!

THURSDAY - • MUG NIGHT

 GET HAMMERERRR!

FRIDAY, APRIL 25 & MAY 1

• TGIF CLUB-200-700—HAPPY HOUR PRICES•

JITTERBUG CONTEST—10.00—
SIGN UP BY 9:00PM.

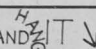
1st Prize "5 pitchers"
2nd Prize - 3 pitchers
3rd Prize - 1 pitcher

SATURDAY, APRIL 26 & MAY 2

— NO MEN TILL 9:00PM.—

LADIES NIGHT • 7-9PM. — FREE BREW

"WE'RE DYIN' TO MEET YA!"

✓ CUT OUT AND  IT ↓



MSU SPORTS

Four Athletes of the Month chosen

'Cats hope to end long losing streak in Missoula this weekend

It's always a battle when Montana State and Montana get together in athletic competition and this Saturday should be no different when the Bobcats and Grizzlies meet in Missoula for their annual track matchup. It has been a long dry spell since the Bobcats have won this dual meet. The last MSU victory came in 1967 and Bobcat coach Rob Stark and his squad are well aware of the 14-year drought.

"This is always a big meet for us because of the amount

of pride that can be lost or gained," Stark said. "We really feel that we have a good shot at winning this year's meet. It's no secret that we are a strong field event team so to win Saturday we have to at least 35 points on the track and win one of the relays."

Last weekend the Bobcats walked away with the championship in the Eastern Montana College Invitational Track Meet in Billings. MSU scored 274 points, well ahead of second-place Eastern Montana with 121. Stark was pleased with the performance last week and he was particularly happy about the track time that the 'Cats are finally getting.

"We really needed the track time we got last week. The weather we've had this spring hasn't allowed us the outside exposure that we really needed," Stark commented. "The team is starting to come around. Times are getting faster and distances are getting longer so it looks like we will be ready this weekend."

While the Bobcats are thought of as a field event team, the Grizzlies are strong in the middle distances and the hurdle events. Stark feels that the team that wins the dual will have to score well in another area.

"The meet could very well be decided in the sprints. Neither team has shown much strength in the dashes this season and the team that can pick up the sprint points should win the meet. I hope it will be us because it is always fun to beat the Grizzlies."

Four athletes from Montana State University have been named players of the month in the women's athletic department.

They include Laurie Holm in track, Marianne Arild in gymnastics, Ingrid Gustafson in skiing and Donna Friedt in tennis.

The athlete of the month awards are sponsored by Fidelity Union Life Insurance Company. The award honors the outstanding athlete in each sport competing during

that month. Players are chosen by the coach of their sport.

Holm, a freshman from Missoula, was selected for her outstanding performance at the AIAW Indoor Track and Field National Championships. In the 1,000-meter run, Holm's time of 2:51.55 set a new MSU record. In the distance medley, Holm ran half-mile leg in a time of 2:09. It was the fastest half-mile leg run among the 19 teams

(Continued to page 13)

Female netters play host this weekend

The Montana State University's women's tennis team hosts its first home matches of the season this weekend at the MSU Invitational.

Four universities will compete, including Boise State University, the University of Montana, Washington State University and MSU.

Matches will be held Friday and Saturday on MSU's outdoor courts. Admission is free to the meet.

MSU finished second to the University of Idaho last weekend at the Idaho Invitational. The Bobcats defeated Washington State

and the University of Puget Sound, but lost to Idaho 5-4.

Coach Doug Powell said he was pleased with the team's progress over the weekend.

"We're playing much better," he said. "I think we'll be ready for regionals in a few weeks."

MSU's win over Washington State was the Bobcats' first dual match win ever over the Cougars. WSU finished fourth at the meet.

MSU's outstanding player at the tournament was Jeanne Rogers of Bozeman. She was undefeated in both singles and doubles play, where she was teamed with Karen Egan of Helena.



Scott Descheemaeker goes through final preparations before this weekend's meet in Missoula. Robin Brown photo

ASMSU FILMS PRESENTS

gentleman's agreement

starring: Gregory Peck
Dorothy McGuire

Sun. April 27 339 Johnson Hall 8p.m.
Students: \$1.00 Others: \$1.75

The Black Angus invites you to treat yourself to a special evening of fine food, drinks and musical entertainment.

Tuesday - Prize Night
Prize giveaway starting at 9:00

Wednesday - Ladies Night
½ price drinks for ladies.

Sunday - Thursday
Happy Hour 4:00-6:00
buy one, get one free



BLACK ANGUS

Steak House & Lounge

520 West Mendenhall

Bobcats to take this season line(ing) down

by Bruce Parker
MSU Sports
Information Director

It's always nice to have experience on a football team and that seems to be the case this season at Montana State University.

To be precise, it seems at least half right.

On the offensive line the Bobcats return four starters off last year's Big Sky Conference championship team and two other players who were part-time starters. The story is reversed on the defensive line. Gone are two starting tackles and a big job during spring football drills will be to fill those spots.

"We should be strong on the offensive line because of the experience that is returning," offensive coordinator John McMahon said. "What we must do is establish some depth to back up the starters. We've moved some people around and we have some young people that we hope can do the job."

Leading the list of returnees is senior center Larry Rubens. The 6-1, 230-pound native of Spokane, Wash., is a two-year starter and his leadership and ability

should be a strong force in the Bobcats' championship drive. Last season, Rubens was given honorable mention honors on the all-conference team.

"Larry is one of the finer centers in the Big Sky," McMahon said. "He works very hard at his game and that work is very evident when he puts on the pads."

Returning starters on the line along with Rubens are tackles Scott Sax, a 6-7, 230-pound junior from Missoula, and Mike Ereaux, a 6-3, 230-pound senior from Malta, and senior guard Jay Jackman of Spokane, who stands 6-2 and weighs 226 pounds.

Two other players were part-time starters last season. Tom Fox appears to be the top candidate for the starting nod at tight end. Fox is a 6-3, 225-pound senior from Billings. Filling the void at guard will be 6-3, 220-pound Don Samuelson of Broadus.

Other top prospects include Derek Wunsch, a senior from Spokane, and sophomore Don Davis of Bremerton, Wash. at center; Jeff Bedey, a sophomore from Hamilton; Charles White, a junior from Napa Valley, Calif.; Todd

Belot, a sophomore from Calgary, Alberta; and Bellevue, Wash., native John Blackman at the guard positions.

Also in the tackle picture are freshman Eric Harlington of Wenatchee, Wash., and Calgary sophomore Brian Strong. Along with Fox at tight end are Ron Torchia, a junior from Great Falls and sophomores Bruce McKean of Kennewick, Wash., and Neil Parker of Oak Harbor, Wash.

"At this time in spring ball we are about in the same position as last year," McMahon said. "If we can establish the depth that we are looking for we could be much stronger."

Defensive line coach Ed Schmidt doesn't have the luxury of a host of experienced players but that doesn't phase him.

"We have more talent this year than last," Schmidt commented. "We are young and inexperienced but the potential is there. It is just a matter of getting the experience."

A key to the defense could be the middle guard position where two veterans return. Ron Ranieri, a 6-0, 215-pound

senior from Great Falls, and Tim McVicker, a 6-1, 220-pound junior from Kelso, Wash., split time as starters last season. Ranieri was named to the second team all-conference squad.

"It will probably take us a little more time to develop but we should eventually be better," Ranieri said. "Tim, Gary (Fickle) and myself are fighting it out at middle guard and the tackle positions are wide open and that makes things very interesting."

Graduation left a void at the tackle position and the

trio battling for the two spots didn't see very much playing time last season.

The group consists of Jim Missel, a 6-4, 246-pound junior from Spokane, sophomore Phil Bruneau, a 6-5, 235-pounder, and Bob Kardoes, a 6-3, 215-pound sophomore.

"If we took all of the actual game time that those three accumulated last season, it wouldn't equal one game," Schmidt commented. "Our number one goal this spring is to gain some maturity and experience. We're very young!"

CO-ED RACQUETBALL DOUBLES

Play begins Monday, April 28, in the Intramural Co-Ed Racquetball Doubles Tournament. Come on out and watch the fun!

SOFTBALL

Intramural Men's and Women's Softball begins Monday, April 28. Get out of left field and get in on the action!!

WEIGHT LIFTING

If school is getting to be pressing....enter the Intramural Weight Lifting Competition. Sign-ups begin

Monday, April 28, and will be taken in 301 Romney through Thursday, May 1. Competition will be held Saturday, May 3, in the Fieldhouse. Don't WEIGHT to enter this event or you won't win SQUAT!!!!

GLUB CLUB

Kicking by the 10th milestone this week is Jerry Rodriguez, one of the newer Glub Club members. Chris Porter has finished 15 miles, while Sally Weyers is up to 20 miles. Don't forget to turn in your mileage to 301 Romney....let's get kickin'!!!!

THIS ISSUE
L'GLOVE PANTS

LEVI'S

L'WOMENSWEAR



NOW YOU CAN MOVE WITH TOTAL ABANDON
L'Glove Pants hidden "magic flex" waistband and stretch fabric give you all the freedom you need.

LOOK MA, NO SEAMS!
You're a real smoothie because we've eliminated the outside seam for a more flattering fit.

KEEP YOUR OPTIONS OPEN
Two different leg openings and a wide variety of striking colors.

AND L'GLOVE PANTS ARE KIND TO YOUR WALLET!

Levi's
L'WOMENSWEAR

QUALITY NEVER GOES OUT OF STYLE.
Ladies Dept. on the Balcony

WE DRESS THE WEST AT...
McCracken's
131 EAST MAN • DOWNTOWN BOZEMAN

Free Parking in the rear
Store Hours: Mon. thru Sat. 9 a.m.-5:30 p.m.

Featured in Junior Sizes



THE JOHN COLTER BAND

The John Colter Band, Bozeman's own country rock band, playing the best music you've ever heard from a local group. Playing April 28th through May 3rd. Come on down to the Molly and see for yourself!

RAZOR, a Rock and Roll Band from Seattle with a promising future will be playing through the 26th of April.

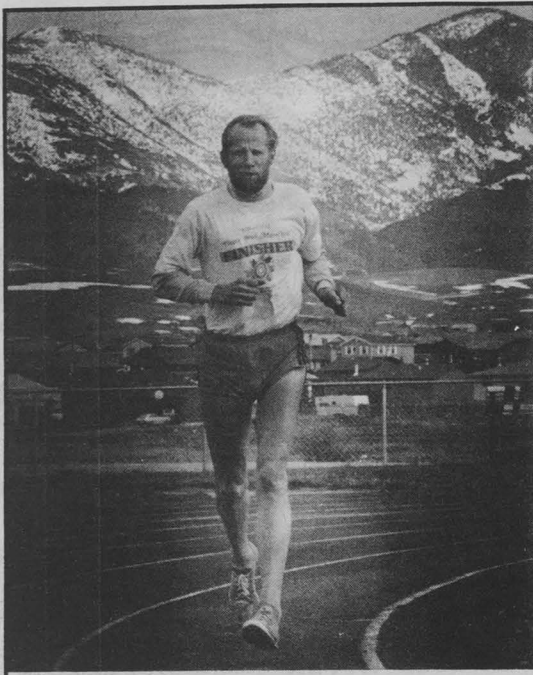


Continued from page 11
entered in the medley.

Arild was honored for her gymnastics performance at the NCWSA Region IX championships in Spokane. Arild's uneven bar and balance beam routines during team competition earned her a chance to compete in the individual championships. She was the only MSU gymnast to compete in the individuals.

Gustafson's award was her third of the season. She has consistently been the team's high scorer throughout the season. She was chosen for her skiing performance at the AIAW National Championships in Vermont.

Friedt, a senior from Billings, was selected for her play during a series of matches between MSU and California schools.



Bill Foulk, a 46 year-old father and member of the MSU track team, runs a few laps to loosen up after his return from Boston, where he competed in the world's biggest marathon.
Robin Brown photo

MSU female thinclads in Idaho

Montana State University women's track coach Neil Eliason is planning a change in strategy for his team this weekend.

The Bobcats travel to the Idaho State "Potato Classic" in Pocatello on Saturday. After several weeks of successful meets throughout the region, Eliason says the team is going to concentrate on improving running times and performance quality.

Eliason said the entire team will travel to Pocatello, but the emphasis is competition will be on quality, not quantity.

"We'd like to win, but we also want to improve our times and distances," he said.

Freshman Laurie Holm returned in MSU's top performance at the Kansas Relays last weekend. She finished second in the 1,500-meter run with a time of 4:28.34. Holm also finished seventh in the 800-meter run with a time of 2:11.9.

Lauri Adams captured seventh in the 5,000-meter run with a time of 17:11.09. Adams' time was one second off the national qualifying time.

MSU's field events competitors were led by Deb Holliday, who finished fifth in the discus with a throw of 45'1/2". Teammate Carol Halland placed eighth in the discus with a throw of 36'10". Sharrie Shelton took seventh place in the long jump with an 18'1/2" effort. The Bobcats also won the

Rocky Mountain Invitational track meet in Billings. Competing against nine area schools, MSU finished with 199 points, followed by the University of Montana with 185. Flathead Valley Community College finished third with 34 points.

Sharon Canda, a junior from Portland, Oreg., won the 100-meter and 100-yard dash events and earned outstanding athlete honors at the meet.

Peggy Travis took first

place in the 100-meter hurdles, long jump and high jump. She finished second in the shot put and ran a leg of the mile relay with MSU's team which finished second.

Laurie Adams and Merna Jacobsen were double winners for the Bobcats. Adams won the 1,500-meter and 800-yard runs. She anchored MSU's winning two-mile relay team and also ran in the mile relay.

Jacobsen threw the discus 129'4 1/2" and the shot 42'3 1/2".

Donovan, Missel perfect

Nineteen Montana State University football players earned 3.0 or better grade point averages during the winter quarter and 15 have cumulative GPAs of 3.0 or better.

Of the 77 student-athletes playing football at Montana State, the cumulative GPA is 2.5.

Kevin Donovan, a defensive end from Helena, and Jim Missel, a defensive end from Spokane, Wash., led the way with perfect 4.0 GPAs.

Other players who had 3.0 or better GPAs winter quarter were: Terry Alberta, Billings, 3.0; Bob Balzer, Federal Way, Wash., 3.25; Don Davis, Bremerton, Wash., 3.0; Mike Doerfler, Missoula, 3.41; Mark Eibner, Apple Valley, Minn., 3.16; Bob Fisher, Salem, Ohio, 3.11;

Skip Higgins, Choteau, 3.25; John Johnson, Spokane, Wash., 3.0; Dain Lochridge, Livingston, 3.41; Chris Lofgren, Spokane, Wash., 3.25; Mike McLeod, Cheyenne, Wyo., 3.44; Pat McLeod, Cheyenne, Wyo., 3.06; Dan Meade, Iowa City, Iowa, 3.0; Steve Roderick, Spokane, Wash., 3.0; Larry Rubens, Spokane, Wash., 3.87; Bill Walker, Townsend, 3.26; and Steve Waterson, Townsend, 3.26.

Those who have cumulative GPAs of 3.0 or better are: Jeff Bedey, Hamilton, 3.04; D. Davis, 3.3; Doerfler, 3.16; Donovan, 3.10; Eibner, 3.22; Higgins, 3.26; Johnson, 3.42; Lochridge, 3.53; M McLeod, 3.47; P. McLeod, 3.17; Steve Nicksich, Spokand, Wash., 3.23; Rubens, 3.0; Scott Sax, Missoula, 3.23; Walker 3.55, and Waterson, 3.18.

25% DISCOUNT ON SUMMER RENT RATES FOR FURNISHED MOBILE HOMES

2 Bedroom	WAS	\$ 195 - 240
	NOW	\$ 145 - 180
3 Bedroom	WAS	\$ 270 - 315
	NOW	\$ 200 - 235

UTILITIES PAID, only a \$150 deposit required.

Located in Wagon Wheel Park, within walking distance to campus.

Available from end of Spring Quarter until Sept. 1st.

One month minimum rent period.

HOME LEASING, INC. - WAGON WHEEL PARK

CALL 586-2391

2219 W. COLLEGE

586-2678

[SOUTH OF BIG BOY RESTAURANT]

ASMSU NEEDS TUTORS FOR THE FOLLOWING CLASSES:

BuAc	225
Chem	133
Math	105, 226
EM	253

APPLY AT STUDENT
SENATE OFFICE.

LADIES WANTED,

FOR HUNDREDS OF LADIES, QUALITY, NAME BRAND SHOES, BOOTS, AND HANDBAGS AT LOWER THAN WHOLESALE PRICES:

HOW DO WE DO IT?
HERE'S OUR STORY

NOT ONE SALESMAN —
SERVE YOURSELF AND SAVE

We have 100's of Shoes on Plain Wooden Racks. All Shoes are grouped by Size, and Prices are plainly marked. Most of our Shoes are Special Purchases, Over Productions and Close-Outs, or they could not be sold at Our Ridiculously Low Prices. We Buy Direct from the Factories, Eliminating the Middleman & Saving You Lots of Bucks!

EVERYDAY IS A SALE DAY AT . . .

SCOTTY'S
SHOE HOUSE

115 N. BOZEMAN 587-9049

(a block & a half off main)

—CAUTION—

SOUND PRO IS GOING COMPLETELY

BANANAS!

OVER 300 ITEMS WITH PRICES PEELED DOWN TO A MINIMUM!

GET THIS PORTABLE
AM/FM CASSETTE VALUED AT \$249⁰⁰

SPECIAL LIMITED OFFER

\$699

4 PIECE
SYSTEM
COMPLETE



AM/FM
STEREO
AC/DC 12 V



\$249
VALUE

FREE
WITH THE PURCHASE OF THIS
SPECIAL PRICED YAMAHA STEREO SYSTEM

WE'VE REALLY GONE BANANAS! CHECK THESE PRICES!



METAL CASSETTE
W/DOLBY
FLORESCANMETERS

\$149 *Never Again!*



TECHNICS TURNTABLE W/STROBE
\$80 SHURE CARTRIDGE

\$159 *It's Bananas!*

Reg. \$239



8" 2-WAY SPEAKERS SYSTEM
FOR THE BEDROOM OR DEN!

\$69 A PAIR!
(While they last)

Reg. \$129



JVC 80 WATT AMPLIFIER

\$199 *Now, that is bananas!*

(Limited supply)

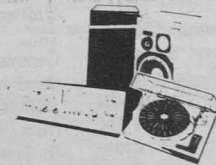


COMPLETE SEPARATE COMPONENT
STEREO SYSTEM FOR UNDER \$400?

YES . . . WE REALLY ARE BANANAS!

\$349

- JVC amplifier
- Turntable
- Speakers



\$15 pair

5 1/4" STEREO
SPEAKERS
A steal



\$89

AM/FM IN-DASH
CASSETTE PLAYER



\$79

60 WATT POWER
BOOSTER
W/EQUALIZER



\$39 pair

TRIAXIALS
(While they last)



?? WATCH FOR THE GORILLA-FREE BANANAS!

26 WEST MAIN

587-5118



CLASSIFIEDS

Announcements

PLAN NOW FOR MAY 3 MKD pig roast, kegs, tunes, sun in Missoula. Don't miss it.

HEY, BOYS AND GIRLS! Drop the slack and kick back... The Zonker Harris Cocoa Butter Open and Spring Picnic, May 17th. Soak those rays!

LET YOUR POLITICS HANG OUT! Organizational meeting for people against the draft. Monday April 28, 7 p.m. Bighorn Room, SUB.

GET READY: May 3, Grand Opening of Chapter No. 2 MKD Missoula

OLD SPURS AND FANGS: Old New Party, May 3, Moose Lodge.

THE DRAFT: What-me worry? Come hear about the draft and ways to stop it. Monday April 28, 7 p.m. Bighorn Room, SUB.

WANTED-YOUR MIND: and energy to keep your body from being drafted. Monday April 28, 7 p.m., Bighorn Room SUB.

For Rent

ROOMMATES WANTED to share large three bedroom house South of campus-garden-laudry. Call 586-1077 evenings.

FOR RENT: Two bedroom trailer, Wagon Wheel Park. Open May 1. Partially furnished, 180.00. Call 7-8406.

HORSES PASTURE BOARDED: Hay fed daily during winter. Good facilities, 587-3031.

CLEAN ROOM FOR RENT: 1 block from MSU, male, non-smoker, call 587-7857.

ROOMMATE NEEDED: for summer central location, call Caroline, 586-7794.

For Sale

FOR SALE: 1977 Datsun 280Z. \$6900. Metallic blue. Excellent condition. Call Billings, 656-8469 after 3:00 weekdays, all day weekends.

RECYCLE your aluminum and steel beverage cans and your beer bottles. Bring them to 202 W. Curtiss, tomorrow, from 9:30 a.m. to 4 p.m. Proceeds will be used to finance the bottle bill.

AVON to buy or sell. Call 587-0818.

FOR SALE: 1977 Datsun 280Z. \$6900. Metallic blue. Excellent condition. Call Billings, 656-8469 after 3:00 weekdays, all day weekends.

FOR SALE: 1977 Datsun 280Z. \$6900. Metallic blue. Excellent condition. Call Billings, 656-8469 after 3:00 weekdays, all day weekends.

MOVING: Must sell one pair KLH Model 5 acoustic-suspension speakers. Perfect condition. 586-6943.

FOR SALE: 1977 Datsun 280Z. \$6900. Metallic blue. Excellent condition. Call Billings, 656-8469 after 3:00 weekdays, all day weekends.

FOR SALE: 1977 Datsun 280Z. \$6900. Metallic blue. Excellent condition. Call Billings, 656-8469 after 3:00 weekdays, all day weekends.

Jobs

SUMMER JOB CLERK NEEDED for Parks' Fly Shop. Send application resume to Box 196, Gardiner, Mt. 59030. Trout Fishing experience preferred.

TEACHERS WANTED: Elementary and Secondary. West and other states. Placements since 1946. Southwest Teachers' Agency, P.O. Box 4337, Albuquerque, NM 87196.

LIFEGUARD NEEDED for Roskie Beach. Mouth to mouth resuscitation essential. Added benefits. Females preferred. Call 2887. An unequal opportunity employer.

Personals

LATRINE: Life isn't always what it seems. A pound of feathers weighs the same as a pound of gold. Keep trying. LaAnn.

KELLY: Are you getting skinny. I'm getting hungry for seafood.

STUDS FOR HIRE: Tracy or Larry. 6-06.

LISA AND JODY: Three's Company. Sundance soon again! Tom.

SMILES (T.S.): How was yer weekend? Didn't trust me, eh? I wouldn't either. It's good to have ya back! Me Myself & I.

LOST: Keys on brass ring. Important, please call 994-4953.

LOST: Black Norwegian sailor cap on 1st floor Reid Hall. Sentimental value. lease return. 587-5637.

CAR WASH: Friday April 25. Starting at 1:00 p.m. Sponsored by AGD, 1206 South Sixth. All proceeds go to the Nat'l Juvenile Diabetes Foundation. Please help!

Calendar

FREE HIGH BLOOD PRESSURE SCREENING for adults and children who are family members of students. Drop in Wednesdays 1 to 5, Nursing Services Center, 117 Sherrick Hall.

WOMEN'S HEALTH FORUM: What are your concerns: health promotion, birth control, stress. Let us know. What you would like to discuss and when. Days 994-4171 or 994-4781 evenings 587-8915.

Every Thursday from 7-9 p.m. there will be a lecture for Television Management and Sales class in room 212 of Cheever Hall.

Come vote

To the Editor:

Within the upcoming election a number of fine candidates are running for ASMSU offices. Ten Senators and three Executive Officers will be chosen from over twenty candidates. All students at MSU who are presently carrying seven or more credits are eligible to vote at the polls which will be located South Hedges, Pryor Colter, Hannon, and the SUB. All that is needed to vote is your validated I.D.

The people that will be elected will allocate the student activity fee which students pay each quarter, a total contribution of \$45 per three quarters. These same students that will be elected will also develop and coordinate many student

programs on campus. Your voice through your vote is an expression of how you want your campus developed and money spent. Get out and vote in the elections Friday April 25, 1980.

Pat Davidson
ASMSU President

Support Mike

To the Editor:

Having been a student senator for two years (1977-79) I know how easy it is for student senators to lose touch with the true feelings of the general student population at MSU. I feel quite strongly that such will not be the case for Mike Reinhardt and I would like to encourage you to put him in your student senate.

Before he decided to run for senate Mike spoke with individuals both in and out of student government about the problems and important issues facing ASMSU, and if he is elected to the senate I'm certain he will continue to listen to the students feelings and concerns on the pressing issues facing senate.

During the next year the state legislature will be in session and it will be important that ASMSU have people who know what the students want and can articulate these wishes in

Helena and I believe Mike can be a good spokesman for you.

I would again like to encourage you to support Mike Reinhardt this Friday.

Sincerely,
Chris Walterskirchen

Lighten up!

To the editor:

To whom it may concern

I think it very commendable that the SUB cafeteria management has given the mentally handicapped a chance to work and be more independent. But the practice of following these people around and measuring their performance with a stopwatch is absurd. During and after these time studies are they compared to the NORMAL worker? Is this the general practice whenever the mentally handicapped are employed? Lighten up, they are already under an enormous amount of pressure to compete with the NORMAL worker and this can only add to it.

Thank You
Mike Hawkes

We support Webb

To the Editor:

Having worked together with Amber Webb for the last

three years in the Student Activities Office has shown us that she is the ideal person for the job of ASMSU President. Amber has proven herself to be a hard working, dedicated and assertive individual first as a member of the ASMSU Contemporary Entertainment Committee, Muscular Dystrophy Association Dance Marathon Chairperson the last two years, and presently as the director of the ASMSU Program Board. It has been through Amber's leadership that a very high level of entertainment has been made available to the students of MSU.

This same leadership can be applied to the Associated Students through the position of ASMSU President. We urge you to vote for Amber Webb for ASMSU President on Friday, April 25.

Dan Krebill, Chairman
ASMSU Performing Arts Committee
Brian Vinchesi, Director
"ASK US" Information Referral Center

Vote Burgess and Beatty

Dear editor:

There are two candidates for ASMSU senate who are exceptionally qualified to hold

(Continued to page 7)

(24 HOUR DIAL-A-MOVIE 586-9505 AND 586-9506)

Tonight at 7:00 & 9:00 **ELLEN**

JAMES CAAN in **HIDE IN PLAIN SIGHT**

PG

John O'Neal **Milly McNichol** in **Little Darlings**

PG

Nothing Personal

The Government doesn't care, the Military is lying, and a Billion Dollar Corporation is trying to kill them...

Starts Today!

Triple Feature at the **SKATETOWN USA**

ALSO **ROLLER BOOGIE**

PLUS **The Salt that Saved Pittsburgh**

Final Week

Cruising for a killer...

AL PACINO **CRUISING**

United Artists

Norma Rae **SALLY FIELD**

Shows at 7:20 & 9:35 Family Discount Sat. & Sun. 5:05

"Best Actress"

Serial

"Honor thy wife, and everyone else's."

Showing Nightly at 7:15 & 9:15

MARTIN MULL **TUESDAY WELD** **SALLY KELLERMAN**

STARTS TODAY!

SERIAL

A PARAMOUNT PICTURE

Start Times are 7:00 & 9:00 Nightly

THE BET IS ON: WHOEVER CATCHES A GUY FIRST - WINS.

The two girls from "Paper Moon" and "Family" grow up quickly at Summer Camp

From Mel Brooks **BLAZING SADDLES** with **Gene Wilder** and **Cleavon Little**

SLEEPER

Coal Miner's Daughter

Nightly at 7:00 & 9:20

Fri. & Sat. at 11:00

ELLEN

CONTINUEDS

Schwinden

(Continued from page 4)

federal government is going to take it anyway. He believes there will be energy rationing by price or volume within the next 2-3 years.

Schwinden said he believed that the proposed energy exploration of the Bob Marshall Wilderness was more of a test of environmental consciousness than an effort to find gas reserves. He approved of last weeks Forest Service decision to not allow energy exploration in the reserve.

In an interesting comment which also seemed to show his confidence in defeating Judge in the June primary, Schwinden reported he has an aversion to the use of veto power because that puts more emphasis on his decision than that of the legislature.

Because of his experience as Director of the Department of State Lands Schwinden was asked what he thought of the reclamation at

Colstrip. He said there is no productivity on old mined land spoils but "I really feel good about the reclamation program" and added he has a "growing conviction that we can reclaim land".

He said the big question is water. Some coal seams are aquifers and when they are removed the water table may sink to prohibitive depths offering a serious problem to the possibility of agriculture on land that has been mined.

Commenting about Montana being one of only three states in the nation without a sales tax he said he does not believe Montana will institute one in the near future. He said it's usually instituted as a property tax replacement but it doesn't always work that way. What it really does is give the government an excuse to think up more ways to spend money.

Other candidates in the Democratic primary race for Governor are Martin Beckman, Robert Kelleher of

Billings, and Governor Judge. Kelleher will speak May 7 in Willson School auditorium. Judge has indicated he would like to have a public forum in Bozeman but has not yet decided on a date.

Contestants in the Republican primary battle for Governor are Florence Hagen from Buffalo, Montana, Jack Ramirez of Billings and Al Bishop, also of Billings.

Hagen will hold a public forum May 5 in the Bighorn-Yellowstone Room of the SUB; Ramirez on May 12 in the Madison Room of the SUB; and Bishop on May 19, also in the Madison Room. Times have not yet been announced for any of the speaking engagements.

The Forums are co-sponsored by the Presidents Office of MSU and ASMSU.

Cheerleader

(Continued from page 3)

work with camp participants expenses, both during the camps and in between camps. In addition, the instructors will receive \$95 a week and a weekly commission ranging from \$15 to \$50, based on the number of people enrolled in the camp.

"It's really a good job for me because I'll be doing something I enjoy and I'll get to meet lots of people. And at the same time, I'll be making pretty good money when you consider that I won't have to pay rent or food.

"The camps will be held during the weeks. On weekends, we're free to travel and sightsee. I plan to make the most of the summer."

Teamtrials

(Continued from page 2)

score starts both of the passes. Skills are judged on BOTH FORM AND DIFFICULTY.

Tumbling

The preliminaries consist of one compulsory and two optional passes. At least three skills must be per-

formed in each pass. As in the other events, the top ten performers are selected for the finals (two additional passes). The competitor with the lowest score in the preliminaries will begin both of the final passes.

A tumbling routine shall be planned to demonstrate a variety of forward, backward, and sideward skills. The routine should show good control, form, execution, maintenance of height and difficulty. Tumbling passes must start from a run up to the mat and the last skill in each pass held stationary in a standing position on the mat, for three seconds.

Home Ec

(Continued from page 4)

Don Clark, assistant to MSU President Willaim J. Tietz, said, "Since the Regents are doing a lateral review of the home economics departments at MSU and the University of Montana, it's extremely beneficial that our home economics department at MSU has received this re-accreditation."

Survival

(Continued from page 1)

"The anti-nuclear movement has reached the point where we can take these interrelated issues into the living rooms of America," says Fernandez. "Once again, we must act to move government policy away from the course set by the military-industrial complex and other vested interests."

There was also a sense of urgency expressed by Survival Summer coordinators. "The development of the M-X, the cruise missile, the Trident submarine, and the Pershing missiles in Europe are all indicative of a U.S. commitment to a first-strike nuclear policy," says Jerilyn Bowen of the Mobilization for Survival. "This greatly increases the chance of a nuclear confrontation. We must stop this

CONTINUEDS

trend soon-before the actual deployment begins-or it may staffmember of the Women's International League for Peace and Freedom. "The threat of the draft has really brought the issues home for students, and we're ready to take it to the streets again."

One member of the Survival Summer staff is the Rev. Richard Fernandez, a former civil rights activist and veteran of Vietnam Summer. He expressed optimism about the timing of the project.

She also expressed concern over the apparent unawareness of the public on the risks of nuclear holocaust and the need to generate an informed public debate on nuclear policy during the election period.

"Survival Summer is the next step in our ongoing work to build a broadbased working majority to reorder national priorities from the community level up," says Bowen. "It seeks to transform the widespread feelings of hopelessness and helplessness into a determination the people can and must exert their rights as citizens, call government to account, rebuild community, and redirect human resources to human ends."

Volunteers will receive training from experienced movement leaders and will get organizing support in the communities where they work. Training, organizing materials, and resources will be provided free of charge. Most volunteers will cover their own living expenses, though limited scholarships will be made available for those who cannot otherwise afford to participate. College credit may also be available.

For more information, contact: Survival Summer, Mobilization for Survival, 3601 Locust Walk, Philadelphia, Pa. 19104 (215) 386-4875.

Sundance AUCTION CO.

Turn your furniture & "STUFF" into CASH.
Sundance Auction now consigning for our next sale. 586-4836

Live Country - Rock Music
by SWEETWATER
Friday and Saturday April 25, 26
Fine Food • Mixed Drinks • Beer
OASIS STEAK HOUSE • Manhattan

THE CATS PAW
Now playing for your listening and dancing pleasure, DAN MOODY

→ A variety of music
→ to please everyone.

721 N. 7 Ave.
586-3542

Try us for your carry out liquor and beer.

NO COVER CHARGE

Also enjoy our spacious game room.



ASMSU FILMS PRESENTS
BERNARDO BERTOLUCCI'S
THE SPIDER'S STRATAGEM



sat. april 26 8pm
msu students \$1.00 339 Johnson
others \$1.75