



Life is a mystery to be lived . . .

. . . not a problem to be solved.

Museum module given go ahead

The board of trustees for the Museum of the Rockies has given a "go ahead" for construction of the museum's second module on the MSU corner of Kagy and 7th

The 20-member board, acting at a recent meeting, authorized its trustee building committee to enter into agreement with a contractor. The move paves the way for the second two-level, 12,800 sq. ft. building, on which construction may begin this fall.

Work on the museum's first building may be completed by September. Both structures are being financed by private contributions.

The proposed building is the second of eight planned modules, which will be

connected by corridors. Each building will eventually be devoted to displays interpreting the physical and social aspects of the Northern Rocky Mountain area.

"We have contributions totaling about two-thirds of the second module's cost," said Dr. Leslie Drew, the museum's director, "and will have to raise the rest."

Directories to be delivered

According to informed sources, the student phone directory will be out Thursday, September 28.

The directories will either be delivered to each dorm

room or will be picked up by the students at the front desk of each dorm.

No charge will be attached for the directories.

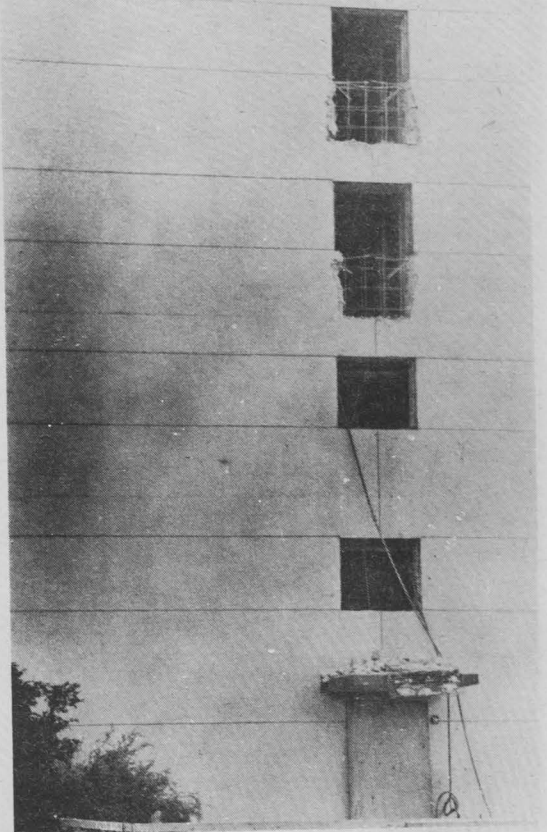
For those students who are having trouble dialing, here are some suggestions.

If a student does not know a certain number he may call the on-campus operator by dialing "0".

For all 994 calls, the on-campus student only has to call the last four numbers of the total seven digit number.

Anyone wishing to call off campus must first dial 9 and wait for the dial tone. On hearing the dial tone the student may proceed to dial the desired number.

Students wishing to obtain a special billing number for long distance calls may contact the Bozeman telephone office.



The question most often asked is "What is happening to Lewis and Clark?" Well, they're putting in enclosed fire escapes. This picture shows the beginning of construction.

Photo by Shovic

ENTER OUR "GREAT SCREEN LOVERS" CONTEST

Clip this coupon and bring it to the Cinemas to see if you are a winner! Circle one of the names below:

HUMPHREY BOGART — CLARK GABLE
RUDOLPH VALENTINO — WOODY ALLEN

If the name you have chosen matches our nightly selection—you will be admitted free!

WOODY ALLEN???
Evokes the Memory Of Humphrey Bogart

"PLAY IT AGAIN. SAM"

PG-13 Technicolor



CINEMA TWO
BOZEMAN, MONTANA
Ph. 586-9505

Shows Nightly 7:30 & 9:15

Jesse James and Cole Younger's most daring bank robbery!
Cliff Robertson in "THE GREAT NORTHFIELD, MINNESOTA RAID"

•NOW• 7:05 and 9:00
Rated PG

CINEMA ONE
BOZEMAN, MONTANA
Ph. 586-9505

DUSTIN HOFFMAN

AS

LITTLE BIG MAN



C
I
N
E
M
A

C
I
R
C
U
I
T

ONE SHOWING NIGHTLY... 7:30pm SUB THEATRE
SATURDAY, SEPT. 23
SUNDAY, SEPT. 24
ADMISSION — \$75

Counseling classes carded

The MSU Educational Services Department has announced that Introduction to Counseling, a graduate level course, will be offered in a late afternoon time period this fall.

The schedule has been arranged to accommodate teachers, administrators in education, and others from Bozeman and the surrounding area interested in enrolling.

The course carries three hours of graduate credit. It will be offered from 5 to 6:30 pm, Mondays and Wednesdays of autumn quarter, in Room 101, Reid Hall.

Instructor will be Dr. Richard Horswill, assistant professor of educational psychology.

Horswill said the class will explore the counselor's role, which is different, he emphasized, from that of the guidance counselor. Included will be ethics and responsibility, therapy, individual development and theories of counseling.

Persons enrolling in the course must have graduate standing (hold a bachelor's degree), though they do not have to be admitted to the MSU College of Graduate Studies.

Registration for students who are not regularly enrolled at MSU can be accomplished at the first class session Monday, Sept. 25.

ENDING SATURDAY!
CLINT EASTWOOD in

"PLAY MISTY FOR ME"

At 9:25 —R— Added:
GENE HACKMAN in
"CISCO PIKE" 7:30



ELLEN
THEATRE
BOZEMAN, MONTANA
Ph. 586-9505

ENDING SATURDAY!
HE'S 20-SHE'S 80
IT'S A LOVE STORY!

"HAROLD AND MAUDE"
—PG—
at 7:30 & 9:20



RIALTO
THEATRE
BOZEMAN, MONTANA
Ph. 586-9505

Recycling is around again

Newspaper recycling will continue this fall according to Louise Keough, the new head of the project on campus.

Louise Keough, a senior in chemistry, will be in charge of the project on campus this year, replacing John Dineen, a former Exponent editor, who got the project started on campus.

The recycling project was started on campus last April and was continued over the summer. The paper collected is hauled to Cody, Wyoming by the Montana National Guard where it is pressed into plasterboard.

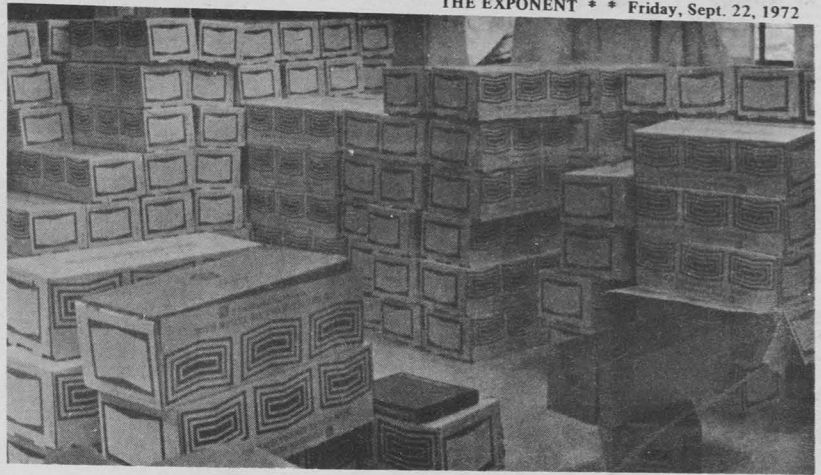
Green and white barrels are situated in several dorms and there are three barrels in the SUB. Barrels are placed on the first floor near the door in Hannon, Hapner, Hedges North, Lewis and Clark, Langford, and Reid Halls.

The first collection took place Wednesday evening with about 250 pounds of paper collected in the SUB alone. Students bundle the paper and deposit it in a building donated by Montana National Bank. The bundled paper ends up at

the Big Horn Gypsum Co. where the pressing takes place.

By pressing the newspaper into plasterboard the environment is saved from the sludge given off during the de-inking process. The newspaper does not have to be de-inked when it is pressed into plasterboard. The plasterboard is an inexpensive and ecological way to use the paper stated Keough.

Collection time will be announced in the Exponent.



The Montanan is alive and well and all students that were here last year can pick theirs up at the Montanan office.

Photo by Ed Hoadley

Exponent editor resigns

Louise Keough, a senior in chemistry, has resigned her position as editor of the Exponent. A new editor has not been appointed.

Citing lack of time for study, Keough ended her quarter long position in a letter of resignation in June. The letter was acted on at Thursday's student senate meeting.

Keough stated, "I feel that I can no longer ignore my grades and the rest of my life as the Exponent often forces its editor to do." She offered, however, to help her replacement.

The unexpected resignation leaves the Exponent without an editor for the first time in

memory. Keough was the second female to hold the post in four years.

The editor is chosen from candidates submitting applications to media board. Student senate must approve the media board's recommendation for editor.

Applications for the position are available in the student senate office. To qualify for

the position, a student must have worked on the newspaper for two quarters prior to his application.

However, according to Don Pilotte, media board director, that requirement will be waived if none of the qualified applicants are satisfactory.

Deadline for applications is 5 pm, Thursday, Sept. 28, in the student senate office.

Application Now open for

- 1 - Exponent Editor
- 2 - Student Senate Chairs
- Misc. Committee positions

Apply at asmsu office in SUB

Anyone can apply Equal opportunity employer

Theater productions slated

Below is the list of Student Union Theater productions for the 1972-73 school year. Admission for adults is \$2.00. Youngsters under the age of 12 will be charged \$1 for each production. For further information, contact Dr. Bruce Jacobsen, chairman of MSU Theater Arts.

October 31 - November 4

Dark of the Moon

A classic of rural Americana, based on the haunting ballad of Barbara Allen and set in the Smokey Mountains. "A folk play of color, atmosphere, and imagination."

January 31 - February 3

A Company of Wayward Saints

Enjoy a fine meal in the SUB Ballroom with this Dinner Theatre comedy. "A fine mosaic of the procession of life, redeemed by humor and human understanding."

February 13 - February 17

The Brown Pelican

George Sklar's new environmental play addresses itself to the pressing crisis facing us today.

April 24 - April 28

The Balcony

In a series of macabre, climactic scenes, Jean Genet develops his mocking view of man and society with this masterpiece of the absurd.

May 15 - May 19

Musical

An Alpha Psi Omega production to be announced.

Shoestring Theatre

(Student Directed Series - No Admission Charge).

December 5 - December 9

The Firebugs

Max Frish's astounding allegory about a careless

Everyman who has permitted evil and destruction to insinuate themselves into his house, then to enthral and finally to destroy it and all its occupants.

March 6 - March 10

Hail Scrawdyke

David Halliwell's fantasy play of protest... "A kooky play... the best of the scene has a mad hatter quality, quite engaging..."

May 29 - June 2

Production to be announced.

GET THE LOOK AND FEEL OF ACTION!

Welcome Back Students & Faculty
Special Back-to-School SAVINGS
on the Most Complete Line of GOODYEAR
TIRES & ET WHEELS In The Area

SIZE AND TYPE	Reg. Sale Price	Sale Price	Fed. Ex. Tax
	W/Trade	W/Trade	
H-79-15 CPC PG NW	55.30	34.95	3.01
G-78-15 CPC PG NW	52.40	31.95	2.84
F-78-14 PC PG XNW	49.60	32.64	2.52
H-78-14 P-Belt PG BL	47.90	29.95	2.75
E-78-15 SAFAW2W	44.95	23.00	2.36
C-78-15 PC PE BL	34.50	19.95	2.10
F-70-15 Spd. WTWS	39.95	21.00	2.63
G-70-14 Spd WT GT WL	41.95	32.00	2.79
L60-14 Rally GT WL	59.95	49.00	2.42
L60-15 Rally GT WL	60.95	49.00	2.41



ALL ET WHEELS 20% OFF

3 WAYS TO PAY AT GOODYEAR

GOODYEAR TIRE CENTER

"Home of Polysteel"

512 East Main

Owned and Operated by LAMBRECHT TIRE COMPANY

Ph. 587-0616



MSU is a member of Pi Kappa Delta, national forensic fraternity; the Rocky Mountain Forensic League; the Western Speech Association; the Interstate Oratorical Association; and the Montana Intercollegiate Forensic Association.

Exponent Opinions

Editorless Exponent expounds

The Exponent for the first time in memory is without an editor. Because of this the staff is a little more disorganized than usual, therefore please bear with us until a new editor is chosen in about two weeks.

The present staff has decided not to make any changes in policy until we have an editor.

We encourage letters to the editors. These letters should be typewritten, double-spaced, and no longer than 250 words. We reserve the right to edit these letters but will not willfully change the author's intent.

No letter will be published without the author's name, class, and curriculum. In the case of a non-student, their address is required.

If sufficient cause is shown we will withhold the author's name but we must know who the letter is from.

The Exponent does not publish announcements of club meetings, etc. These announcements will appear together in a column from Information Board. Only special announcements that are too late for this column will be published.

We're open to suggestions provided that they're constructive.

Feel free to come in and talk to us anytime.

cm

Fresh man fears and frustrations

After a few initial moments of fear and trepidation, you, dear freshmen, find yourselves in the midst of collegiate life here at good ol' MSU with four glorious years ahead — or maybe just two wild quarters.

Well, life isn't too bad in Bozeman, America, if you can tolerate cowboys, an extreme emphasis on varsity sports, and a less-than-friendly public down the hill.

We're particularly strong in engineering and ag and nursing at this school, and the current building frenzy on campus should enhance other departments. Now all we have to do is pay our instructors reasonable living wages.

It's still safe to walk on campus after dark, and most faculty members are still willing to rap with us chillun when they have the time. Drunks at home football games may offer you a swig from their paper bag, and the dorm food is good at least once a week. It's not too hard to hitch a ride up to Bridger Bowl during the winter, and you should be inundated with invitations to attend keggers in the spring.

Oh, we have a semi-rock radio station and we have a few token members of the Radical Student Union, but it is still mostly a 1950's type of campus populated with rural-oriented students.

Welcome, ya'll.

jrn



'I'LL SEE YOU IN NOVEMBER!'

McGovern nomination greeted with enthusiasm

To the editors:

The nomination of Senator George McGovern for the Presidency has been greeted with enthusiasm by veterans all over the nation. Letters pledging a willingness to work or financial support for the campaign have come from people on active duty in Vietnam, Germany and bases throughout the world.

Twenty-five years of preparations for war have brought to America ten years of actual war. The veteran has become the forgotten man in this deadly game of "brinkmanship." Senator McGovern's proposal to reduce defense spending to a reasonable level and to divert our resources to the more pressing social and economic needs of the American people is of great importance to the veteran.

The legislative record of George McGovern has reflected a strong stand for the veterans of all wars. A decorated combat veteran of World War II, he favors increases in the GI Bill to meet the rising costs in education and extensive government action in cooperation with private industry to curb the high rate of unemployment confronting today's veterans.

Unlike Richard Nixon, Senator McGovern does not have a "secret" plan for peace that has failed at the expense of over 20,000 American lives, countless more Vietnamese and billions of dollars. Unlike Richard Nixon, Senator McGovern would not continue to bomb indiscriminately, nor would he bomb at all.

The McGovern plan for peace is public, in keeping with the honor and integrity of the American people. The Nixon "game plan" which equates "peace and prosperity" with more war, massive bombing, inflation and greater unemployment must cease. The veteran can play a key role in restoring peace and purpose to American policy at home and

abroad; the election of George McGovern as President will bring a new and better government to the American people.

Veterans for McGovern organizations are presently forming on campuses and in communities across the country. Working closely with local McGovern for President offices, many are still understaffed and lacking funds. We encourage and need your support. If you're short of time and money — remember, it takes little time to register and no money to vote. If you have any problems, questions or suggestions, feel free to write or call — we're here to help you out.

G. Dudley Acker, Jr.
National Director
Veterans For McGovern

The Warden's words

A warm heart felt greeting to all for the academic year 72-73. As this year unfolds I'm sure you, the student, will realize the new effort being put into ASMSU by many from all aspects of campus.

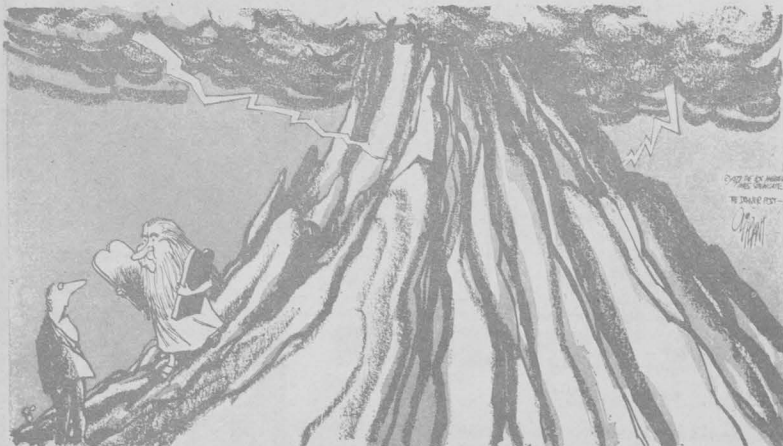
This large dramatic change in student involvement was slow in coming to MSU and now it looks like it is in full swing.

I invite any and all who may be interested in participation in ASMSU to stop by and chat at the Student Senate office anytime the door is open. I will have office hours to be announced next issue. Let's keep trucking for 72-73.

Respectfully,
Bill Warden
ASMSU Student Body President

A note of sincere thanks to Woodstock Nistles, C. Mackey, Steve Ryan and Troll in preparation of our first big issue.

gwg



'THAT'S ALL VERY FINE . . . DO YOU HAVE ANY WORD ON FOOD PRICES?'

The Exponent is an independent, student-written and student-managed newspaper at Montana State University, Bozeman. The opinions expressed herein are not necessarily those of the university or the student body. Published twice weekly except holidays and final week during the school year by the Associated Students of Montana State University. Known office of publication, the Exponent, Student Union Building, Montana State University, Bozeman, Montana 59715. Editorial, business phone 587-3121, ext. 333. Subscription rates, second class postage paid at Bozeman, Montana, to any point within the United States and its possessions at \$6 per college year.

GUEST
EDITORIAL

by Majorie W. King

Food service stresses quality

EDITOR'S NOTE: Marjorie W. King, a member of the Board of Regents, spoke to a conference of agricultural deans from colleges and universities across the nation earlier this summer. What follows is part of what she told them.

By law the Regents of the Montana University System must represent Montana geographically and politically. Presently our board consists of two lawyers, two bankers, a librarian, the president of a small Catholic college, an electrical engineer, a rural housewife, and a non-voting student. Our backgrounds are as diverse as our views. We represent a variety of people and we listen to an even greater variety of people. I can tell you some of the things non-academic people are saying and thinking.

They are thinking that statements of academic freedom as expounded by faculty groups and approved by governing boards are too idealistic and that academic responsibilities are glossed over too lightly. There is a nagging doubt that too many faculty members are hiding behind tenure without producing, and compounding this problem, that administrators are ignoring the fact in order to avoid controversy and lawsuits. There is a feeling that if the profession does not give adequate assurance that they are concerned with these problems, someone-else should try to solve them.

There is doubt that research is the glowing search for truth it is purported to be. There is question as to how often it is motivated by desire for personal prestige and financial gain at the expense of the student.

There is disgust for students whose marching and demonstrating obstructs the rights of others. There is outright disdain for the faculty people who support and encourage this type of venting of frustration.

If this sounds negative, perhaps I should remind you that the life of a regent is not necessarily filled with telephone calls from happy parents, letters from satisfied students and conferences with jubilant legislators!

I know, and you know, that good things are happening and great things have been accomplished. Conscientious people are striving to come up with answers which will satisfy both genuine and exaggerated doubts. Education does not always have a good press. The public appetite for sensationalism perplexes me and the eagerness of the media to disseminate emotional and melodramatic coverage vexes me.

This kind of conference is heartening. Your initiation of a conference devoted to the concepts and principles of self-evaluation and accountability — and the fact that you have invited a governing board representative to participate portends good! May I thank you.

Our board has grave and serious concern about the current financial out look for higher education in Montana.

There is a vague sense of disenchantment which exists, yet is difficult to identify. It is illusive but it is there. It is negative — it is stubborn. I do not believe it has geographic perimeters. All across the U.S. the signals are up.

A positive reaction can perhaps stem the tide.

Quality is the goal of Montana State University's food service operation, according to Glenn Lewis, director of on-campus living.

MSU feeds approximately 3,200 students each quarter in three dining complexes. Lewis, who's been director for five years, said his staff used few convenience foods and prefers to prepare from scratch.

"We use all raw food," he said. "We feel we get greater quality and food that's more satisfying to the students."

Preparation for the autumn quarter students begins in early summer. Lewis orders food and supplies through the State Department of Administration. Everything must be bid.

The food service serves 20 meals a week. Only two meals are served on Sunday. Prices for fall quarter for a double room and board are \$335.50.

MSU is considering an optional meal plan under which students may arrange for 10, 15 or 20 meals a week and be charged accordingly.

Lewis said before the plan is accepted a student survey will be made to determine their choices and preferences.

The director also is concerned about money with the optional meal plan.

The food service is operated by Montana State University and receives no state aid for building, maintenance or operations. All money coming in comes from food charges.

Lewis said food monies go for labor, food, maintenance and bond commitments for building.

"If we adopt the optional plan I'm not sure we can meet our commitments," he said.

National statistics show college food services are feeding students for less than \$3 per day per student and in some cases less than \$2. The national average is \$2.36 as determined by a survey of the

National Association of College and University Food Services. MSU charges \$2.66 a day.

"Other universities may appear to have lower charges but it must also be recognized other universities have state aid in operating their food services and building residence halls, which of course keeps their costs down. Ours is a non-profit making operation and we show a greater return to go back into the facility," Lewis said.

The department employs 85 full time people and 300 students.

"We have supervisors on each shift who do nothing but look for ways to improve production areas and quality," he said.

MSU also has a student food committee which meets frequently and makes suggestions about preparation and student preferences.

It's surprising the number of students who would rather eat hamburgers than steak," Lewis said.

Students have an ample choice. Last year Lewis inaugurated a plan to serve hamburgers and French fries with every lunch and dinner in addition to two other entrees. Students also have their selection of six kinds of salad, two vegetables, soup, bread, desserts and about 10 beverages.

Another unique plan is the soup and sandwich line, something which has proved popular with students with the growing trend towards snacks.

Students may eat an unlimited quantity of everything except the main meat entree.

College students have hearty appetites and Lewis and his crew started ordering large quantities of items early this summer.

The frozen eggs arrive in 30-lb. cans and are useful because as Lewis said, "Can you see our help cracking enough eggs to bake cakes for over 3,000 students?"

Eggs with two yolks and one white are also available for baking purposes.

The food service uses mostly frozen vegetables.

"The quality is better and quality is most important," Lewis said.

He predicts for the school

year students will consume 87,000 gallons of fresh whole milk.

Meat accounts for about half of the food expenditure.

American's favorite combination, hamburgers and fries, goes over big with the students.

"Three years ago our French fry consumption was 18,000 lbs.," Lewis said. "Last year, since we started serving hamburgers and fries two meals a day, we used over 100,000 lbs. of French fries."

Also inaugurated last year during final week was an 11 o'clock special of French fries and hamburgers.

Good nutrition is a goal of the food service but Lewis said with some students it's impossible.

"You might get someone who wants to eat hamburgers every meal," he said.

Breakfast is served from 7 to 10:15; lunch from 10 to 2 and dinner from 4 to 6:15.

In keeping with the national trend of preference for snack foods MSU opened a soup and sandwich line last year.

"I think you can see this trend in town with the rise of taco and hamburger joints," Lewis said. "The soup and sandwich line is very popular here."

The days of students "starving" while waiting in line to eat are long gone at MSU.

"There's no reason for a student to wait more than three or five minutes in the cafeteria," he said. "And they can come back and eat as often as they want. We don't care if it's 10 times a day."

OUT ON A LIMB

By Don Akchin

You just can't please the Mafia.

You would think owning the state of Louisiana and getting two complimentary articles in Life Magazine would satisfy these guys. Appasement, apparently, has failed.

For now the Mafia, or a similar, well-organized syndicate, is stealing 10-speed bicycles from LSU students.

Honestly! That's like stealing candy out of the mouths of babes.

ONE LUSCIOUS babe had her candy-colored bicycle stolen from her in broad daylight. Kate Mallet, 20, was riding in front of the Deke House on Dalrymple in her post-Woodstock hugging bell bottoms and her white pull-over lace blouse. A flashy dresser on the sidewalk whistled and said, "That's a pretty patch you have there. What does it say?"

He referred, of course, to the one on her belled bottom. Miss Mallet, frankly flattered,

dismounted and proceeded to show Flashy that her derriere decal read "Love." When she turned to remount her bicycle, it had vanished.

MIS MALLETT later learned that Flashy was part of an elaborate ruse. Her bike was loaded into a waiting orange garbage truck while she had her back turned. Two days later it was a pawnshop somewhere north of Omaha, Neb.

Bicycle owners can take several steps to protect their wheels.

— Avoid derriere decals.
— Leave 10-speeds locked in a room with the curtains closed. Do not leave 10-speeds out in public, even locked.

— Less expensive bikes should always be locked. The syndicate won't take them but some other enterprising joker will.

— Whenever possible, chain the bicycle to something immovable, like the Union or a live oak.

EVEN THIS safeguard,

however, was not enough for Miss Honeydew Stickywicket, 18, who chained her 10-speed to a U.S. mailbox outside the Pentagon. An hour later both mailbox and bicycle were gone. Campus Police are still searching for the bike. Federal investigators traced the mailbox to a pawnshop north of Omaha, Neb.

— Don't attend football games. More bicycles are stolen during home games than the rest of the week.

— Ride on the right-hand side of the road, with the automobiles.

THIS DOESN'T stop thieves but it will prevent me from having three coronary arrests every time I ride my bicycle onto campus. Cycling around here is beginning to take on all the thrills and excitement of a Demolition Derby. You never know what may await you around the next corner, perhaps a head-on-collision.

And I do not relish the thought of dying in the saddle with a spoke through by heart.

**HAFNER'S
AUCTION HOUSE**
& USED FURNITURE
IN BELGRADE

We Buy Separately or by the Household,
or You May Consign Your Merchandise!

We Guarantee

Satisfaction at Time of Sale

LARGE SELECTION

Household Furniture & Appliances - On Display
Also Kitchen Appliances - ALL KINDS

CUSTOMER

CONVENIENCE

Hafner Will Buy Early

& Pickup When

Ready to Move.

CALL BELGRADE 388-6062

Open 10 A.M. to 5 P.M. Weekdays or by Appointment
Fred & Ella Hafner - Owners
89 East Northern Pacific Ave.

First Baptist Church

CORNER GRAND & OLIVE ST.

Welcomes & Invites

ALL STUDENTS TO CHURCH DINNER

October 1st — 6:30 p.m.

Tone returns with new ideas for theatre

By Joe Nistler
Staff Reporter
Ben Tone, MSU assistant

professor of theater arts and a former television actor, spent the past summer working for a

Seattle company called A Contemporary Theater, and has come back with new ideas

about directing. Tone, who has been teaching on the Bozeman campus since

1963, participated in three ultra-modern productions during the summer, beginning with "Echoes," a theatric statement by Richard Nash.

The second play was "The Trial of the Catonville Nine," the story of the Berrigan brothers' burning of draft files and the brothers' subsequent trial. Tone was in the role of the judge.

The third play was "Moon Children," an intimate investigation into the commune life of college kids, with a carload of four-letter words added for flavoring.

Each play lasted for two weeks.

Tone explained that the main advantage of his experience was "working with three professional directors and also working with professional actors from New York, Los Angeles, and Seattle."

Continuing, he said, "I learned new techniques of directing and preparing an actor. Five years ago, directors in Seattle blocked a play quickly and tried to get it on its feet immediately. Now, actors are free to do their own blocking and dialogue."

Tone jumped right out of high school in Portland, Oregon and onto the stage.

Eventually, after years working in New York City, he helped establish the Virginia City Players in 1949, and thus began his seasonal trek to Montana. Through the 50's, Tone worked in such diverse places as New York and Toledo during the winter, only to return to Montana during the summer to tour the state.

In addition, during this period he appeared in several Hallmark Hall of Fame television productions, including "Alice in Wonderland," "The Devil's Disciple," and "The Lark."

After one "unsuccessful" summer doing a one-man show in West Yellowstone, Tone was hired as a speech instructor at MSU. Two years later, he began concentrating on the theater arts.

"The class of student acting is improving at MSU," he stated. "Since we have received the departmental drama degree, we've been getting more transfers and freshmen every year."

"Twenty years ago, actors were considered second class citizens. Today, because of the huge number of television actors, there is more respect for actors in general. It's still tough trying to find an acting job, though," noted Tone.

Tone teaches Shakespeare, acting, pantomime, stage makeup, and the fundamentals of directing. In addition, he directs many MSU student productions.

Hi Gang!

WELCOME TO BOZEMAN

Come on in and Meet the Staff in Our Customer Service Department



Susie Secor



Debbie Kessler



together,

we
can
make
it happen

FIRST NATIONAL BANK

IN BOZEMAN

MEMBER F.D.I.C.



Phi Kappa Phi, national honorary society of faculty and student members, has a chapter at MSU. Senior students are elected to membership on the basis of scholarship and leadership attainments. Top ranking junior students are also eligible.

Defensive wall concerns new grid coach Hysell

How green!

WOULD YOU BELIEVE RENT 1001 ITEMS

Would You Believe You Can Rent This Many Items From One Store Reasonable Rates,

ATHLETIC AND SPORTING
tandem bicycle
rubber rafts
snow shoes
toboggans

BABY NEEDS
high chair
stroller
porta cribs
6 yr. cribs
play pen

BEDS
rollaway beds
baby beds

CAMPING
air mattresses
sleeping bags
tents
tent heaters
lanterns
tarps
packboard
cooler

CARPENTER AND ELECTRIC

arrow hammer
arrow stapler
mitre box
sanders
drills
extension cords
roto hammer
router or planer
skill saws

FLOOR CARE
shampooer
linoleum roller
vacuums, wet and dry
upholstery shampooer

A B C
Rental

1602 West Beall
Open Mon.-Sat.
8 a.m.-6 p.m.
Ph. 587-7318

HEALTH AND HOUSEHOLD

action cycle
belt vibrators
electric fan
gym dandy
slender gem
joggers

sewing machine
electric heater
adding machine
typewriters
hot plate

HOSPITAL AND INVALID
hospital bed and rails
canes
crutches
wheel chairs

LADDERS AND PAINTING
step ladders
paint spray units

LAWN AND GARDEN

MECHANICS — HOIST
power'n pull
motor hoist
hydraulic jack
transmission jack
piston hones
socket wrench set
torque wrench
copper tube and flanging kit
battery charger

Do-It Yourself

The job of molding a stout defensive line at MSU has been placed squarely on the broad shoulders of Cliff Hysell, a former Bobcat lineman who returned to his alma mater after being a part of the highly successful Great Falls High School program.

He was the Bison defensive coordinator for five years and helped them capture three state championships while posting two unbeaten seasons.

When Hysell played in the mid-sixties, defense was the Bobcats' forte.

He was a member of the 1964 Camellia Bowl team which allowed 111 points in 11 games. Last year's Bobcat team yielded 284 points in 10 games. Though everybody is scoring more these days, that figures out to a too-high four touchdowns a game.

Even though MSU returns the heart of last year's defensive front, Hysell's task

is formidable.

"After working with the kids four weeks it's difficult for me to say how strong we'll be," Hysell says. "I'm not familiar with our competition."

Hysell and head coach Sonny Holland say the strength of the defense lies in the quickness of tackles Curt Brandon, Glasgow, and Bill Kollar, Warren, Ohio.

Kollar, 6-3, 236, was all-Big Sky a year ago as a sophomore. Brandon, 6-3, 235, has received less recognition than Kollar but Holland rates him the equal of any lineman in the league.

Backup man Wayne Hammond, 6-4, 244, isn't as quick as the other two but he has excellent strength.

The ends are Greg Maurer of Helena and Lynn Schenk of Fairfield. Behind them are senior Doug Morrison of Lewistown, sophomore Randy Fought of Toledo, Ohio and

freshman Gary Fetfeit of Kalispell.

Hysell says Maurer, a 6-2, 206-pound sophomore, could develop into "one of the best ends we've ever had." Maurer was one of three freshmen to play regularly in 1971.

The starting inside linebackers are Ron Ueland and Butte and Dusty Birkenbuel of Great Falls. They're receiving stiff competition from sophomore Gary Wright of Kelso, Wash. Brandon's ability to play linebacker provides added depth.

Outside linebacker is Hysell's chief concern. Starters Gary Kimmel, Sunburst, and Steve Endres, Clinton, Md., have progressed well but the first substitute, transfer Rod Anardi of Maple Valley, Wash., is new to the Bobcat system.

MSU's basic defense is a 4-4 alignment, a change from the 5-2, which had been a standby for years.

On paper there's almost no way Montana State's defensive secondary can equal that of a year ago, which featured All-Big Sky Conference choices Bob Banaugh and Eddie Robinson, but Assistant Coach Sonny Lubick is counting on a new defense and some promising young players to make the Bobcats respectable.

"There's no way you replace a three-year starter like Banaugh," said Lubick. "And Robinson started for us two years and had some great games."

However, Lubick points out that the club does have some players with experience such as Monte Boston, Brad Brisbin, Steve Endres, and Gary Kimmel and some good, but inexperienced people like Steve Dodds, Doug Vickery, Mike Davis, and Bill Crowley.

"Overall, we're hurting experience-wise, but we've got some good kids who want to get the job done," Lubick said. "You can't underrate attitude."

Not only will there be new faces in the secondary but there will be an entirely new defense — at least new at Montana State.

For the first time the Bobcats will play a zone in the defensive backfield. Before, they played man-to-man only. "We'll probably play zone at least 50 per cent of the time," Lubick said.

If nothing else, the Bobcats will show opponents more variations on defense than in past seasons. "Naturally you get variations in coverages using both zone and man-to-man but using either one exclusively," Lubick said.

Lubick says the secondary is going to benefit from a veteran defensive line. "Coach Cliff Hysell is doing a super job with the people up front and that's got to help us," Lubick said.

From a standpoint of personnel, Lubick says MSU's cornerbacks are a little stronger than a year ago, enabling them to defend against the run a little better.

Brisbin, a junior letterman from Bozeman, is a starter on one side while Vickery, a senior from Portland, Ore., and Davis, a sophomore from Seattle, are bidding for the spot on the other side.

Vickery, one of the fastest men on the 70-man squad, has been slowed by injury. Before last spring he had spent most of his playing time as a wide receiver.

Crowley, a freshman from Billings, has impressed coaches with his speed and toughness. He's playing behind Brisbin.

Boston, a two-year starter from Missoula, and Dodds, a sophomore from Spokane, are battling for the starting free safety position.

Starters at strong safety are Kimmel, a senior two-year letterman from Sunburst, and Endres, a junior letterman from Clinton, Md.

Newcomers must provide depth behind those two.



The Bobcat coaching staff for 1972 consists of Cliff Hysell, Sonny Holland, Sonny Lubick, Dennis Erickson, and Bill Christiansen.

How to shoe

Two schools in horseshoeing will be offered this fall, one an 11-day short course for horse owners, the other an 11-week program to train professional farriers.

The short course was held Sept. 11-22. It is set up to provide instruction for horse enthusiasts who want to improve their shoeing skills. The classes covered basic anatomy of the foot and lower leg of the horse, faulty gaits and conformation, and proper trimming, fitting and nailing of the shoe.

The second course will run from Sept. 25 through Dec. 15, with 40 hours of instruction scheduled each week. This school is designed to produce proficient farriers who can do professional shoeing jobs on nearly all types of horses.

Both courses are self supporting through an enrollment fee and are approved for veterans under the G.I. Bill.

For further information contact Professor Bob Miller, Animal and Range Sciences Department.

WELCOME
Students and Faculty

THE GANG ALL MEETS HERE FOR THE COLDEST BEER IN TOWN—LUNCHES AND PLENTY OF CONVERSATION.

LITTLE JOHNS

OPEN 11:00 to 2:00

WE BOOST THE BOBCATS

Golden Bobcats-cage class of the 20's

More than 40 years have passed since the Golden Bobcat basketball team brought fame to Montana State University (then Montana State College). This article in a recent issue of the nationally-circulated "Magazine of Sigma Chi" recounts some of the Golden Bobcats' exploits.

The true greatness of the Montana State College Bobcat basketball team of 1927 to 1929 was attested to by the Helms Athletic Foundation which designated the Cats as the greatest college quintet of all time.

During two seasons the Aggies compiled a record of 72 victories against four defeats and piled up a total of 2213

points to 1208 for an offensive record of 63.2 points a fray.

The Cats from Bozeman were the fathers of the fast break and were among the first clubs to employ a man to man defense.

The Bobcats defeated the national AAU titlists, the Cook Painters, two games out of three, a feat which is unheard of today, for no college clubs of today, however good, dare share the hardwoods with the likes of AAU teams.

The 1929 team composed of Ashworth "Cat" Thompson, 5'9", and Orland Ward, 6'0", forwards; Frank Ward, 6'2", center, and guards John "Brick" Breeden, 6'2", and Max Worthington, 6'0", is generally considered the strongest club of that fantastic

era. The next year, with several players having graduated, the team was still strong enough to take an eastern swing and lose a one-point fray to Pitt, the national titlists. On that same jaunt the Cats licked Marquette, Purdue, Penn State, and Nebraska, losing to Butler and Loyola.

Ott Romney brought Thompson and the Wards from Utah, to supplement

All Montana was "nuts" about their Bobcats, and so was the nation. Tremendous crowds saw them play everywhere, and we can recall having heard of fantastic prices being paid for tickets to see them perform their feats of ledgerdemean with a basketball.

another great Utahan, Val Glynn, who later starred as a baseball pitcher, and then became a superintendent of schools at Harlowton, Montana. Several years ago he retired as dean of students at his alma mater, MSC.

The Cats so dominated the Rocky Mountain Conference one year they beat the Colorado Buffaloes in the playoffs 62 to 21 and 62 to 33.

And even as a "pick-up quintet," without practice, they'd conjure up their skills and click as an awesome machine, overwhelming their foes, before standing-room-only crowds.

How they'd "bust" down the floor, making herculean passes the length of the court, speeding short bursts of

lightening to one another, interspersing these feats with backward tosses which somehow always found their mark!

Max Worthington's agility and quickness, his play-making and how aggravating he was covering other players.

These are the five who one year were named as a unit to the All-Rocky Mountain Conference first team. Subs made it three straight in winning 53 to 47.

Romney left Bozeman in 1928 and was succeeded by Schubert Dyche, his assistant, who mentored the Bobcats for years afterwards.

The Golden Bobcats dominated the collegiate basketball scene in their time more so than any other quintet and captivated the fans of that era even more so than did later date Russell and K. C. Jones of the great San Francisco University club or UCLA's Bruins of Alcindor fame.

"Cat" Thompson has been chosen on the all-time All-American team, being cited for his amazing quickness, dribbling, and shooting prowess. He averaged 17 points a game and once hit 20 with his left hand, a bone having been chipped in his right.

Frank Ward was chosen on the 1928 and 1929 All-American teams. Ward could dunk with either hand and had a great hook shot.

His brother Orland thrice made the All-Rocky Mountain team, once hitting 40 points in a game, unbelievable at that time.

Breeden, three times All-League guard, was a tremendous defensive man and the club's best ball handler. We can recall his amazing back handed passes. His arms were strikingly lengthy.

You may ask how did they manage to lose any games at all? Chalk it up, perhaps to fatigue. Sufficient to say they lost 47 to 43 to Utah State, but won three other games from that club, and lost 44 to 40 to the AAU hotshot Cook Painters, winning the other two.

Years after they graduated the team members would get together during Christmas vacation to take a brief tour around Montana playing whoever dared a joust with them.

The team of stars — the immortal five of destiny!

Why were the Golden Bobcats great?

Because they had tremendous esprit de corps, team pride, and dedication. Coach Dyche recalls he dismissed the boys so they could have Christmas Eve free, and then he found them back at the gym practicing (they had jimmed the door). The Cats were determined to be at their best for a Pacific Coast invasion two days later.

It's been 40 years since we were captivated by the Golden Bobcats and we're still afflicted with a hero worship for these necromancers of the hardwood.

WELCOME

University STUDENTS

LET'S GET ACQUAINTED!

- **ATHLETIC SUPPLIES**
Fraternity & Sorority Coats
Gym Supplies Arrows (35¢ & up)
Footballs — Soccer Balls — Etc.
- **HUNTING SUPPLIES**
Gunsmithing — Rifles — Scopes
Ammunition (Including Hard-to-Get Calibers)
Free Sighting-in Targets
- **KNIVES**
Gerber — Buck — Schrade — Western
- **RELOADING SUPPLIES**

FREE — Zeroing-In Targets

Everything For The College Student

Bozeman's only Complete Sporting Goods Store

POWDER HORN

Phone 587-7373

35 East Main

WE BOOST THE BOBCATS

Rodeo championship climaxes 25 years

By Bob Miller
and
Sandy Gagnon

Twenty-five years of intercollegiate rodeo competition at Montana State University was climaxed in June when the men's team won the national team championship.

In addition to the team crown, MSU's men won four individual national championships. This was the largest number of individual titles ever won by a college in one season in the 25-year history of the College National Finals Rodeo.

Bob Schall, Arlee, was the national champion bareback rider; Jock McDowell, Wisdom, the national champion saddle bronc rider; Dean Perkins, Miles City, national champion ribbon roper, and Lynn Perry, Cut Bank, national champion steer wrestler.

After a slow start in the spring the MSU men's team easily won the regional crown with 3,785 points to 2,987 points for Blue Mountain Community College of Pendleton, Oregon.

Winning the national team championship over the best inter-collegiate athletes in the nation wasn't easy. Some 215 contestants representing over 50 colleges and universities from the western states were

competing. This was the third straight year that MSU hosted the five-day, six-performance College National Finals Rodeo.

MSU Comes From Behind to Win

MSU led at the end of the first go-around with points made by Bob Schall in bull riding, Pat Greany in ribbon roping, and Jock McDowell in saddle bronc riding.

The team trailed Eastern New Mexico University and Southern Colorado State College at the end of the second go-around but had four boys who had qualified to get another head of stock Saturday night. Schall marked 71 on his third bareback horse to place third in the final go-around and enough points to win the national championship in this event. Jock McDowell drew a tough horse to ride and was bucked off, but teammate Cleve Loney of Cascade marked 70 to split third and fourth in the final go-around and placed second in the average on three head.

The MSU men did not score in calf roping and ribbon roping the final night but MSU's Lynn Perry, competing as a non-team member because an injury had limited him to one event,

took points away from Eastern New Mexico University by placing second in the steer wrestling the final night and winning the average on three head. The team championship was to be decided in the bull riding, the last event of the rodeo. Although Schall was bucked off the famous Reg Kesler bull, Blue Frost, it did not alter team standings as riders from Southern Colorado and Eastern New Mexico did not mark high enough on their bulls to place. MSU won with 390 points to Colorado State's 370 and Eastern New Mexico with 331.

Girls' Team Strong Too

Although the MSU girls did not place at this year's finals rodeo, they have been strong contenders in past years. In 1971 an MSU girl, Jan Walter Wagner, Miles City, was the national all-around girls champion and also the champion break-away roper. In 1970, the girls' team tied for second in the nation. This year, the girls easily won the region with Jan Anderson of Wisdom leading the way as regional all-around girl and break-away roping champion. Two freshmen, Debbie Burghduff of South Dakota and Cindy Bolen of Idaho, along with Jan, made up the

team for this year's finals rodeo.

Montana State has one of the strongest rodeo programs in the nation with excellent support from the administration, students and rodeo fans.

Not only does rodeo require great athletic ability, but it also encourages academic success, leadership and responsibility. Rodeo has the highest scholastic requirements of any college sport. It is also the only sport which allows students to participate in the development and enforcement of rules and regulations under which they compete. Students serve on regional and national executive boards and have an equal voice with the faculty in all decisions involving the sport. A student serves as chairman of the national executive board.

Three faculty members work with rodeo activities at MSU. Bob Miller and Sandy Gagnon, both members of the animal and range science department, serve as director and coach, respectively. Bud Purdy, fieldhouse manager, serves as advisor to the club on rodeo production.

MSU Facilities Nation's Best

The facilities for rodeo at Montana State University are the best in the nation. The fieldhouse is the largest and finest indoor rodeo arena on any campus. The annual intercollegiate rodeo held each April draws a standing

room only crowd for the Saturday night performance.

In recognition of the dedication and hard work of Rodeo Club members, plus the financial sacrifice each team member makes to compete in rodeo, the student body has provided an excellent travel budget. Mileage is paid for four outfits to haul students and horses to each rodeo and funds are also supplied for room and meals when the team travels. Team members must supply all their own equipment. Boys and girls competing in the timed events each have several thousand dollars invested in horses, trailers, and pickups.

Enthusiastic rodeo fans have supported the rodeo program, not only by their attendance at the regional and championship rodeo, but also in the scholarship program which the club maintains for the rodeo team. Along with individual cash donations by interested supporters, a number of ranchers donate a calf to the MSU Steer-A-Year Club. The MSU rodeo team shares in the profits made from the sale of these calves.

The 175-member MSU Rodeo Club is one of the largest and most active clubs on the campus. In addition to fielding the rodeo team, it provides practice stock for all club members who wish to try out for the team. The club also produces the annual MSU intercollegiate rodeo which last year drew 180 contestants from 18 different colleges and universities.

SPECIAL SCHOLARSHIP OFFER.

CLASS OF '75 ONLY.

Scholarship Includes: 2-year tuition...free! \$100 monthly. Book allowance, lab fees, etc.

How to qualify:

Just send in the coupon, or talk to the Professor of Aerospace Studies on your campus. (If you're class of '76, next year is your year.)

U.S. Air Force Recruiting Service
Directorate of Advertising (RSAV)
Randolph Air Force Base
Texas 78148

Please send me more information on your 2-year scholarship program.

Name _____ Birth Date _____
Address _____ Sex _____
City _____ County _____ State _____ Zip _____
Present College _____ Future College _____
Soc. Sec. # _____

**FIND YOURSELF A SCHOLARSHIP
IN AIR FORCE ROTC.**

2-NR-92



Wayne Edwards, Bobcat running back, ran for a 57 yard TD during Saturday's victory over North Dakota State.

3 seniors to captain

Three veteran seniors have been selected to captain the MSU football team this fall.

They're Curt Brandon, John Hotchkiss, and Allan Young. They were elected by their teammates.

Brandon, a defensive lineman, and Young, an offensive lineman, were starters in both 1970 and 1971. Hotchkiss, an offensive back,

moved into the lineup early in '71 after transferring from Spokane Community College.

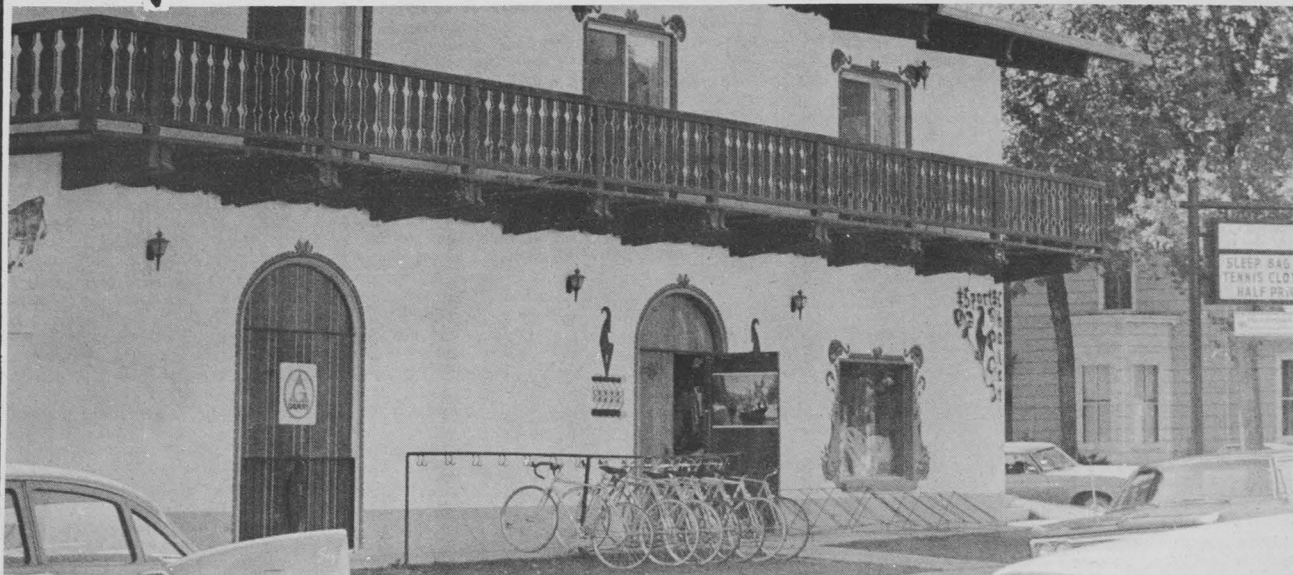
Coach Sonny Holland said the three will provide the Bobcats with excellent leadership.

"They've certainly earned the respect of their teammates since they've been here," Holland said. "All three work at getting better the year-round."



The Sport Chalet

Come in and meet the new owners Bob and Rene



202 South Willson Ave.

Plenty of Free Parking



to ALL MSU STUDENTS

**Come in and check our
Back to School Specials!!**



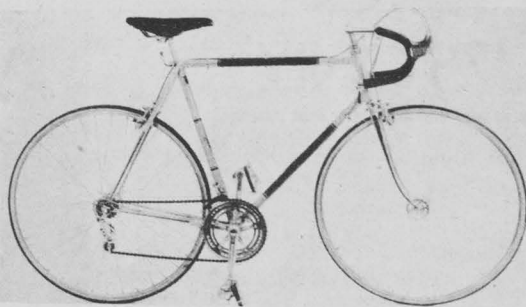
TOP LINES IN ALPINE SKIS - BOOTS - CLOTHING - CROSS COUNTRY EQUIPMENT - BACK PACKING
TENNIS EQUIPMENT & CLOTHING - 10-SPEED BICYCLES - MOUNTAIN CLIMBING - WATER SPORTS - PHOTOGRAPHY

Fantastic Savings on Superlight Italian 10-Speeds

**Fiorelli Model
Tour de France**

Reg. Price \$225.00

\$160⁰⁰



**Fiorelli Model
Milano san Remo**

Reg. Price \$160.00

\$125⁰⁰

1972/73 Model Skis & Boots In!!

Blizzard, Kastle, French Dynamic, Hexcel, Dura Fiber, Hart, Lange, Nordica, San Marco, Scott and many more!!

LAY-A-WAY NOW! Small down payment will hold your lay-away till Christmas at no additional charge.

The Sport Chalet where the action is for 1972

Special Note: Watch for our Open House Party. Date to be announced in next Exponent


NEW MONSTER FLARES

For Young Men

Brushed Blue Denim with cuffs
From 28 to 32

\$12



Also  *McDonald's* has Levis & Farah

Monster Bells For Gals

Blue Denim Low Rise Fit

\$10 to \$12



Gals Waffle Stompers

In both the oxford or 6" shoe style. All sizes.

\$14 to \$18



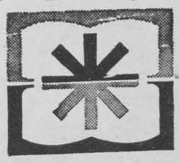
Men's Waffle Stompers

\$18 to \$20

In both the oxford and shoe styles. Suede or smooth leathers.

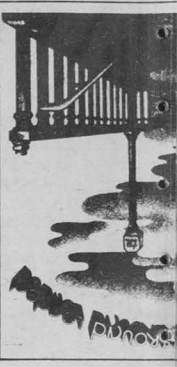


Plenty of Free Parking



McDonald's

BOZEMAN, MONTANA



Rock Albums \$3.39

BIG PACK of Songs at a small pack



TEAM ELECTRONICS

PIONEER (harmann kardon) **Scotch** **SANYO**
JANSZEN **KROSS** **TDK**
CRAIG **KENWOOD** **LLOYDS**
PICKERING **SHURE** **DYNACO**
Sansui **THORENS**
Wollensak **Dual**
Garand **Empire** **PANASONIC**
BSR **McDONALD** **ALTEC** **LANSING**

Prepare yourself for the pending academic stress. Music makes everything easier and shopping for the best music players available anywhere is easiest at Team.

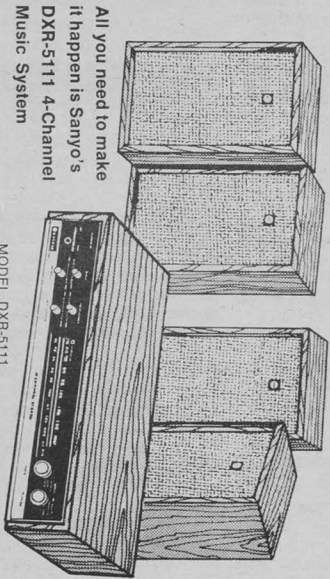
... and they would be pleased to play for you.

the GREATEST NAMES play on OUR TEAM



TEAM ELECTRONICS

YOUR ROOM BECOMES A MUSIC CHAMBER



All you need to make it happen is Sanyo's DXR-5111 4-Channel Music System

MODEL DXR-5111

Imagine being surrounded by music from four speakers and experiencing the sensation of actually being a part of the music. With the Sanyo DXR-5111 it's possible, even on a scholar's budget.

Though low in price, this system provides many quality features. It comes complete with AM/FM stereo receiver, four separate speakers, four amplifiers and decoder matrix circuitry. Stereo sources and play discrete 4-channel material from tape or records too.

There's more to the story, so get all the details at your TEAM Electronics Center.

TEAM PRICE: \$159.95



Pioneer SX-525 AM/FM Stereo Receiver

Altec 887A Capri Acoustic Suspension Speakers

Come in and listen... you'll agree it's a great package to have around when you're back at the books.

Pioneer SX-525 AM/FM Stereo Receiver
Stereo on a budget can have a lot of the power and a lot of the stereo, as this superlative new AM/FM receiver from Pioneer is the music listener 13 Watts per channel (RMS) of music power, highly advanced circuitry and a full choice of program more important extras than many receivers priced much, much balanced, dynamic stereo sound—and gives you more power to fill a large room with music. Moreover, it is Pioneer-built and in stereo that says just about everything.

Altec 887A Capri Acoustic Suspension Speakers
When you hear the big open sound you'll wonder how the compact can deliver it. The two-way speaker system uses an 8" acoustic 3" direct radiator for high frequency reproduction. Cabinets are with oiled walnut. Attractive snap-on grille.

Voice of Music 1593 Stereomatic Turntable with Stereo Magnets
New stainless steel "Shadowweight" tone arm, precision mounted. And an extra special feature—"Cue" control—suspend the left off with the touch of a finger. Shielded magnetic stereo deliver all the highs and lows of your favorite music. Mediterranean polystyrene base. Tinted dust cover, too.

TEAM ELECTRONICS

Shepard diagnosis viruses

For his work on diagnosis of potato viruses, MSU plant pathologist Dr. James F. Shepard has received the 1972 American Institute of Biological Sciences-Campbell award.

The award is given annually by Campbell Soup Co. to a scientist who has made an outstanding contribution in vegetable research. It was presented to Shepard Aug. 30 during the annual meeting of AIBS held at the University of Minnesota.

A native of New York, Shepard joined the MSU staff in 1967 and immediately took

on the responsibility of developing a virus-free potato program for Montana.

He began the formidable project with one tuber each of two varieties, Nargold Russet and Netted Gem.

After culturing these stocks, Shepard developed the serological (serum) tests necessary for diagnosing infected plants.

Planting virus-free stock can give growers more than 25 percent increase in yields, say pathologists who have made yield studies in numerous potato growing areas.

The new testing procedures

are extremely valuable to Montana growers, most of whose potatoes are sold for seed stock.

After Shepard's testing breakthrough, the Montana Agricultural Experiment Station, in conjunction with the Montana Potato Improvement Association, set up a separate potato virus diagnostic laboratory.

The lab is run by research associate Gary Secor who, in 1971, ran nearly 300,000 serological tests of individual potato plants for Montana growers.

Walter presented Mangold Award

MSU professor, Dr. William G. Walter, has been awarded the prestigious Walter S. Mangold Award — for outstanding work in the field of environmental health — by the National Environmental Health Assoc.

Walter, head of the MSU botany and microbiology dept., received the award at the society's thirty-sixth annual conference in New York City.

He was sponsored by the Montana Environmental Health Assoc.

"It is the greatest honor I've ever had," said Walter, who is a member of Montana's Environmental Quality Council and the author of more than 40 publications.

He noted that Dr. Mangold, now a professor at the University of California at Berkeley, had helped set up the Montana Environmental Health Assoc. years ago.

The Mangold award consists of a permanent trophy, a traveling trophy — which Walter will keep for one year — and the prestige accompanying such an honor.

Walter has been involved in two significant studies recently. In one, he found that carpeting may be used in hygienic hospital rooms and hallways without danger of increasing infection. The use of carpeting would allow hospital administrators to deaden some of the building's noise, and to make it more cheerful and homey.

In the second study, Walter and a number of colleagues found that a watershed closed to public activity yielded stream water less bacteriologically pure than a watershed open to public usage. The reason for this, he found, was that wild animal droppings were polluting the otherwise pure water.

CAMPUS CLUBS

Scheduling coordinated for MSU groups

A service that is bound to become one of the most widely-used on the MSU campus — that of coordinating space, food services and housing for groups meeting at MSU — is directed by Allen Bertelsen, assistant director of the Student Union Building.

Bertelsen, along with SUB receptionists Maurine Skalitzky and Virginia Ryerson, acts as a coordinating agent for numerous student, faculty and outside organizations that meet on the

campus.

The groups — ranging from the Loyal Order of the Moose to the Radical Student Union — vary in size from 15 to 1,500, according to Bertelsen.

Most are campus related, he reported, and do not require special housing or food attention.

Nevertheless, a number of large organizations like the Future Farmers of America meet annually at MSU, requiring extensive arrangements.

Bertelsen's post, that of

campus scheduling coordinator, became necessary last year when the number of meetings on the campus started running over 50 a week.

To keep track of the numerous meetings and events, Bertelsen has established an announcement board just west of the SUB main desk. The board is updated daily.

To make a reservation for a meeting or any other type of campus event, persons should contact 994-3081.

Nursing program improved

Susan Dowell, an Omaha native who spent two years as a nurse with the Peace Corps in Turkey, has begun work as director of the "family practitioners" nursing study program at MSU.

Health care in many of Montana's smaller communities is expected to improve with this new program. The project will bring registered nurses, some

of them 10 or 15 years out of school, to the MSU campus for three quarters.

The nurses will study the latest nursing techniques and medical developments. Upon "graduation," they will return with their new skills and knowledge to the communities where they are employed.

The educational program is being financed by an initial half-million dollar grant from the Public Health Service, an agency of the Department of Health, Education and Welfare.

Miss Dowell until recently was a nursing consultant to the Montana State Board of Health in Helena. She received her training at St. Joseph's Hospital in Omaha and a bachelor of science degree in nursing at the University of Colorado. She was awarded a master's degree in nursing from MSU in 1971.

Yoga lecture to be held

A lecture on yoga will be held Friday, September 22 at 6 p.m. in Wesley House (714 South 8th). Lecturer will be Acharya Kumar, who has recently arrived in the U.S. after extensive studies in India.

According to local yoga enthusiast Kathy Krishna, "all sincerely interested persons will be initiated after the lecture."

Krishna also announced that Hatha yoga classes will begin in Bozeman this month. For further information, contact her at 301 North Bozeman.

MSU STUDENTS
and FACULTY



- See Us For -

Full Line of Year Around Sporting Goods

Automotive Supplies — House Wares

Gift Wares — Hardware

COAST-TO-COAST STORE

MORRIS LAGGE, OWNER



WORLD
PEACE DAY

MSU grad serving in Morocco

A young Bozeman architect serving in the Peace Corps is helping the North African nation of Morocco meet one of its most pressing problems: the need for housing, public facilities and urban growth plans as its population shifts from the countryside to the cities.

Robert J. Newhall, 25, a native of Bozeman and architecture graduate of Montana State, is in his second year of Peace Corps service as a volunteer architect in Marrakach, Morocco's third largest city.

One of 27 architects and urban planners serving in Morocco as Peace Corps volunteers, Newhall works in the Marrakech regional office of Morocco's Ministry of

Urbanism, Habitat and the Environment. The regional office coordinates planning and design for public and private buildings throughout a quarter of Morocco's 172,000 square mile territory.

Newhall is a member of the American Institute of Architects. At present he is at work designing a series of 150 to 200 shops with apartment housing on the upper floors for the town of Quarzazate, a day's trip from his headquarters in Marrakech.

Newhall is also drawing up a city design layout for a suburb of Marrakech which, like many Moroccan cities and towns, is experiencing a rapid population growth and the resulting demand for more housing, schools and public facilities. Newhall recently

completed a design for a new public square in Safi, a town on Morocco's Atlantic coast.

With his professional degree and practical experience in architecture, Newhall is typical of the highly skilled volunteers the Peace Corps is sending overseas under its "New Directions" emphasis.

In response to manpower requests from its 60 host countries, the Peace Corps is seeking an increasing number of skilled technical and professional volunteers to meet development needs around the world.

Newhall studied architecture for six years at MSU. He joined the Peace Corps in June 1971 shortly after receiving his bachelor's degree in architecture.

Senior tests set

College seniors preparing to teach school may take the National Teacher Examinations on any of the four different test dates announced today by Educational Testing Service, a nonprofit, educational organization which prepares and administers this testing program.

New dates for the testing of prospective teachers are: November 11, 1972, and January 27, April 7, and July 21, 1973. The tests will be given at nearly 500 locations throughout the United States, ETS said.

Results of the National Teacher Examinations are used by many large school districts as one of several factors in the selection of new teachers and by several states for certification or licensing teachers. Some colleges also require all seniors preparing to teach to take the examinations. The school systems and state departments of education which use the examination results are listed in an NTE leaflet entitled **Score Users** which may be obtained by writing to ETS.

On each full day of testing, prospective teachers may take the Common Examinations which measure their professional preparation and general educational background and a Teaching Area Examination which

measures their mastery of the subject they expect to teach.

Prospective teachers should contact the school systems in which they seek employment, or their colleges, for specific advice on which examinations to take and on which dates they should be taken.

The **Bulletin of Information for Candidates** contains a list of test centers, and information about the examinations, as well as a Registration Form. Copies may be obtained from college placement officers, school personnel departments, or directly from National Teacher Examinations, Box 911, Educational Testing Service, Princeton, New Jersey 08540.

Chet predicts the future

Commentator Chet Huntley described Montanans as "eternal everlasting optimists" who should look at their personal income, shrinking farm employment and unemployment, as final Woman's Week speaker earlier this summer.

"I'm unable to separate the future of Montana women from the future of Montana," Huntley said, adding that "women will not be left out" if

the state grows and prospers. Doubling the population would still mean only eight persons per square mile in Montana, Huntley said.

He predicted by 1980 government will employ two of every 10 workers in Montana, compared to only one by agriculture. Huntley said tourism could become Montana's No. 1 industry and he would like to see 20 to 25 recreation complexes like Big Sky in Montana.

Huntley said Big Sky soon will add 200 to 75 present employees to account for some \$5 million in taxes annually.

He said Montana has more potential recreation to sell than any other state, and could do it without hurting the environment or using much public land. He advocated continued utilization of forests and other resources, but outlawing clearcutting where it will cause erosion.

ETS announces test schedule

Educational Testing Service announced today that undergraduates and others preparing to go to graduate school may take the Graduate Record Examinations on any of six different test dates during the current academic year.

The first testing date for the GRE is October 28, 1972. Scores from this administration will be reported to the graduate schools around December 4. Students planning to register for the October test date are advised that applications received by ETS after October 3 will incur a \$3.50 late registration fee. After October 10, there is no guarantee that applications for the October test date can be processed.

The other five test dates are December 9, 1972, January 20, February 24, (only the Aptitude Test is administered), April 28, and June 16, 1973. Equivalent late fee and registration deadlines apply to these dates.

1972 Bobcat football tickets: Staff and faculty may buy a \$14 season reserved ticket for \$11 or a general admission season ticket for \$6. MSU students with valid ID's may be a general admission season ticket for \$3. Single game admissions are \$4 reserved and \$2.50 general admission for staff and faculty, \$1 for MSU students with valid ID's.

A very limited distribution of complimentary tickets is available to distinguished guests, MSU athletic staff and spouses, and game administration workers.

All home Bobcat games will be played at the Bozeman Hawks field. First game, September 30.

Choice of test dates should be determined by the requirements of graduate schools or fellowship sponsors to which one is applying. Scores are usually reported to graduate schools five weeks after a test date.

The Graduate Record Examinations include an Aptitude Test of general scholastic ability and Advanced Tests measuring achievement in 19 major fields of study. Full details and registration forms for the GRE are contained in the 1972-73 GRE **Information Bulletin**.

The **Bulletin** also contains forms and instructions for requesting transcript service on GRE scores already on file with ETS. This booklet is available on most campuses or may be ordered from: Educational Testing Service, Box 955, Princeton, New Jersey 08540; Educational Testing Service, 1947 Center Street, Berkeley, California 94704; Educational Testing Service, 960 Grove Street, Evanston, Illinois 60201.

Landis appointed director

Named as new head of the Center for Intercultural Programs is Dr. Richard Landis, an associate professor of history and director of Asian Studies at MSU. He will succeed Dr. Robert Dunbar, whose retirement becomes effective at the end of August.

Landis has a doctorate from the University of Washington, and was awarded a Fulbright fellowship in 1966 to study Chinese society and culture.

As director of CIP, Landis will be responsible for domestic exchange and study abroad programs for students.

In addition, CIP sponsors

foreign and American Indian visiting professors, grants for foreign studies, and acts as a counselor for foreign and Indian graduate students.

"It is an extremely diverse job," said Landis, "and my hopes and expectations are to carry on the excellent work Dr. Dunbar has accomplished."

"I will try to generate a greater American Indian presence on campus than we've seen before," he added. "I also hope to develop and sponsor university grants in international studies areas on a more extensive basis."

Landis will continue to teach Russian and Asian history.

SUB damages down

Al Bertelsen, director of the MSU Student Union Building, said that damages to the SUB during the last school term were way down from the 1970-71 term, "a year which was exceptionally rough because of vandalism."

Bertelsen explained that one reason for reduction of property damage in the SUB is that many students are finally realizing that it is their money that is used to keep the building in top condition.

"Furnishings and fixtures are paid for through the operation of the facility," he stated. "Our income is

derived from student money spent in the food service area and in the game room, plus the rentals of our rooms to various groups."

Bertelsen noted that as SUB damages increase, the personnel are forced to raise prices to keep the place operating.

He also said that the SUB, which is open more than one hundred hours a week during the school year, could use more movie projectors, blackboards and portable coathangers. However, money for these is not presently available.



Guess the number* of Swingline Tot staples in the jar.

The jar is approximately square -3" x 3" x 4 3/8". Look for the clue about "Tot" capacity.

The "Tot 50" is unconditionally guaranteed. It staples, tacks, mends and costs only 98¢ suggested retail price at Stationery, Variety and College Bookstores with 1,000 staples and vinyl pouch. Swingline Cub Desk and Hand Staplers for \$1.98 each.

Fill in coupon or send postcard. No purchase required. Entries must be postmarked by Nov. 30, 1972 and received by Dec. 8, 1972. Final decision by an independent judging organization. In case of tie, a drawing determines a winner. Offer subject to all laws and void in Fla., Mo., Wash., Minn. & Idaho. **IMPORTANT:** Write your guess outside the envelope, lower left-hand corner.



*Clue: (You could fit)

200 and 300 Tots with the Staples in the Jar.)

Swingline Honda G P.O. Box 1 New York, N.Y. 10016

THE ARE... STAPLES IN THE JAR

Name _____ Address _____

City _____ State _____ Zip _____

Telephone No. _____

Swingline
32-00 Skillman Ave., Long Island City, N.Y. 11101

Bookstore makes modest gains

Montana State University's bookstore has a goal of keeping prices low and at the same time turning over a small profit.

The store has come a long way from the days when the registrar's office maintained a small supply of pencils, ink and paper.

Since its opening in 1931 the bookstore's main intent has been to sell texts, but student demand has made it necessary to stock fad items and other incidentals in addition to school supplies.

Wayne Arnett, operations manager, said a change has been made this summer in the area of trade books.

"Prior to this summer we had 17 categories," he said. "Now we have 31. We separated divisions such as social sciences into, for example, psychology and other categories. It used to be if a student was looking for a special book of poetry he had to go through the whole English section. Now it's classified into biography, literature, and poetry. It really helps the kids."

Arnett works for Edwin Howard, manager, who has been with the store since 1940. In 1966 Howard was elected president of the National Association of College Stores, "the highest honor accorded in this field."

"He goes out of his way to provide the best for the student body here," said Arnett.

The store also has added a hobbies and crafts section of books, which according to Arnett, is proving popular.

The growing belief that paperback texts will eventually replace

hardbounds is unfounded at MSU.

"A couple of years ago everyone was convinced everything was going to go to paperback but it didn't go that far," he said. "I suspect the volume is not over 30 percent here. In the past, professors used just one book. Now some maybe are using five 200-page paperbacks, so the price and number of pages is similar."

He said paperbacks are widely used in social science classes and English but rarely in technical areas.

The average price of a paperback text at MSU is around \$2 compared with \$8 to \$10 for hardbounds.

Arnett said the store makes every effort to buy back used books.

"In the past professors used the same books but with changes in technology today three years is about the lifespan of one book," he said. "New material is coming out so rapidly that each quarter about 50 percent of the books are not used again."

Used books fall into three groups: Those which MSU will use the following quarter which the bookstore buys back at 50 percent of the new book price; those not used at MSU again which a used book jobber buys in the store, and old editions with little value.

"We try to give students every opportunity to sell back books," Arnett said.

He noted many of the used books available to MSU students were purchased by the bookstore from a used warehouse, thus another attempt at giving the student the best deal.

"This is a service we try to

provide in getting the price down," Arnett said.

The bookstore is not trying to compete with downtown stores.

"We're not going to start selling tires here," Arnett said. "We're not in any way trying to compete with downtown. Our only goal is to provide an on-campus facility for day-to-day academic and supply needs and incidentals for the student body and faculty."

Arnett said prices of textbooks are set by the publishers and are uniform throughout the nation.

"We receive a minimal discount on them and our only objective is to break even if possible," Arnett said.

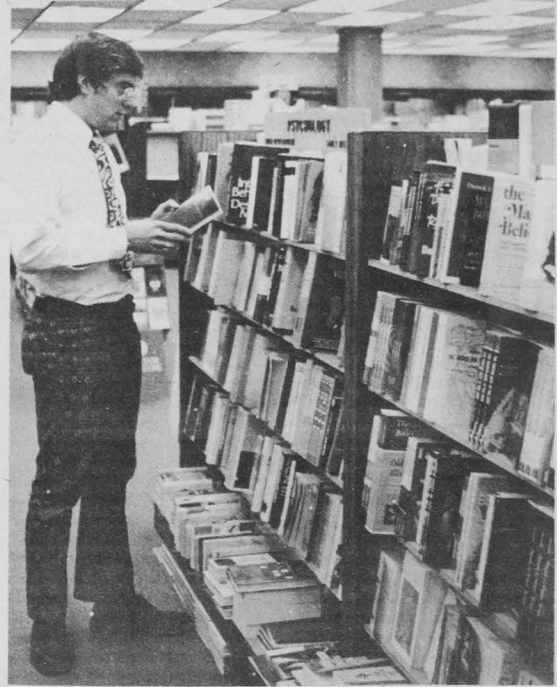
The MSU Bookstore received neither tax support nor student fees. It is owned by the students and faculty of MSU.

"The objective of this store is to turn over a very modest profit," Arnett said, adding that prices on items other than texts are kept as low as possible.

"We have mass purchasing power through a group called the Western Bookstore Association, so we at least have competitive prices with some downtown stores. Our objective is to provide as low as possible prices and not run at a loss."

The store has seven full time employees plus 15 student wives employed all year. An additional 13 are hired during rush seasons.

"As a student owned store we feel we have an obligation to the students. We can't hire students because of their schedules, so we hire student wives," Arnett said.



MSU STORE ECONOMICAL — Wayne Arnett, operations manager of Montana State University's bookstore, shows revamped section where broad categories were reclassified into smaller ones for ease of location. Arnett has been with the store since February. (MSU photo)

Halls lose out

Students' tastes in housing are changing and it is doubtful that more high rise residence halls — now landmarks on the Montana State University campus — will be constructed.

During the last spring quarter 49 percent of the more than 7,000 students attending MSU lived "on campus," that is in residence halls and housing units for married couples.

"But students are turning away from the dormitory style of life," Glenn Lewis, director of On Campus Living at MSU, reports, "and the trend is toward apartment dwelling. If this trend continues," he declared, "we have enough residence halls or dormitories to take care of all future needs."

University authorities have for some time been aware of this change in existing patterns of student living and in 1971 an on-campus survey was conducted in an effort to pinpoint some of the students' desires and the problems of meeting them.

The survey showed there is general dissatisfaction with dormitory living as it is known today and that students want, among other things:

Apartments, with kitchen facilities for cooking.
Private baths.

Furniture which can be shifted to suit individual tastes.

Some choice in colors in wall decorations and in selection of window drapes.

More closets for clothes and general storage.

Mirrors.
Better study areas.

Space for stereos, television, telephones or intercoms.

"Adequate" recreational facilities.

Present residence halls, while bright, clean and well

maintained, are pretty much standardized to permit maximum economy in purchase of furnishings and other equipment and for ease of maintenance. This sameness and lack of flexibility in making their rooms a "little more like home" are among main causes of dissatisfaction with dormitory living.

University regulations such as those which govern visiting hours or use of alcohol on the premises add to the discontent. Day-after-day eating in the residence halls' large dining rooms, in spite of efforts to serve attractive, varied meals at all hours, also contribute to the demands for greater liberties in living accommodations.

Although university authorities are conscious of students' wants for a change from traditional dormitory living, these changes will be slow in coming about, Lewis says, principally because of the cost of new construction and alterations to existing structures.

Some existing buildings cannot be converted into apartments because of their type of construction. Others can be converted by the elimination of partitions and through other structural changes.

Two independent architects, however, are at work on plans for an additional 125 apartments for married students, and the remodeling of Pryor hall, presently used to house single students, into 90 efficiency apartments.

Whatever pace of conversion to apartments assumes, taxpayers may remain at ease, Lewis pointed out. All student housing, along with food and other such services, is paid for by students at no cost to Montana taxpayers.

"X" Rated French Performers

MICHELIN "X" RADIALS

B.F. Goodrich Sonic Belted

"60" Series

Free Replacement Guarantee

G 60-15

White Letters

47²⁷

Tax Included



- ALIGNMENT — Shocks - Brakes
- BEST BALANCING — German Hoffman Balancer
- SPEED LANE — Fast Service
- RETREADS — Only Retread Plant in Bozeman
- INVENTORY — Largest in Southwestern Montana
- BOZEMAN'S LARGEST INDEPENDENT TIRE DEALER

LONG'S **BIG-O TIRES**

101 E. Mendenhall

Phone 587-4441

CAMPUS CHARLIE . . .

"You in a heap o' trouble, boy"

If you have a car on campus, you will soon become acquainted with the traffic office and its inhabitants, collectively known as Campus Charlie.

The traffic office requests that students register their cars and cycles within one week after registration in the fieldhouse. If the \$4 vehicle registration fee is not paid within that period, negligent students will be given a \$1 ticket in addition to the initial

\$4 cost. The fine is doubled after seven days.

However, Campus Charlie has many other duties besides checking up on vehicle registration.

For example, there is always one policeman patrolling the campus in a familiar yellow station wagon. In addition, "there are two walking patrolmen at night who quietly scan the grounds," according to Sergeant Harold Pettys of the

traffic office.

"They watch the parking lots for thievery, and also the traffic flow. They observe any weird people wandering around."

Continuing, Pettys said, "They control the dorm areas and of course look for Peeping Toms, and if there are any problems inside, they will be called into the dorms. Last year was a pretty quiet year."

He listed some of the major problems that the traffic

office encounters as: students who don't register or pay fines on their motorized vehicle, transients, bike storage, animal control, and drug control.

"A lot of students seem to feel that since their car is not registered with the campus police, nothing can be done to them when they receive a ticket. In that situation, we have two procedures.

"First, if the vehicle is blocking service driveways or

building entrances or interfering with the normal flow of traffic, we call a wrecker and impound the vehicle. The owner is then subject to pay the tickets plus wrecking fees and other impounding costs.

"Second, we have wheellocks available. A car cannot be moved once the wheellock is in place. We used them a lot during winter and spring quarters with people who had \$30 or \$35 worth of tickets," Pettys stated.

Moving to the subject of transients, he said, "Any that are caught in the buildings without belonging there will be arrested and charged with trespassing. This includes the dorms.

"One of our big problems is bicycles. All bikes are supposed to be parked in bike racks. Parking on steps or bringing them into buildings is illegal, as well as padlocking them to trees or railings," he said.

"This illegal parking causes the groundskeepers trouble during grass cutting or snow removal. If this problem continues at the present rate, we may have to break locks and chains and impound them so the groundskeepers can do their jobs. Also, bikes should be ridden only on the streets."

Pettys said there are two rules about dogs on campus. One, no dogs are allowed in any building. Two, any dog on campus has to have a city license and be on a leash. Otherwise, such canines will be impounded by the city dogcatcher.

Both the campus police and the city police are given the right to use search warrants in an effort to locate contraband drugs in the dorms. Pettys noted that many different types of drugs were discovered in the dorms, which are state property, during the previous school year — including pot, LSD, speed, and amphetamines.

In addition, he said that those caught stealing would be taken downtown to be handled by Bozeman authorities. A theft of an item with a value greater than \$50 will net the culprit a felony rap.

The traffic office, headed by Chief Don Skerrit, employs eight fulltime people besides the secretary and a traffic maid.

"As a whole, we get along real well with students. In the past, we have received 100 per cent cooperation from them.

"Our role here is not only enforcing the law but also helping the students. If a student has a problem, we will help him," concluded Pettys.

SHOWING

THE

73's

PLYMOUTH - DODGE - CHRYSLER - DODGE TRUCK

DART SWINGER 2-DOOR HARDTOP

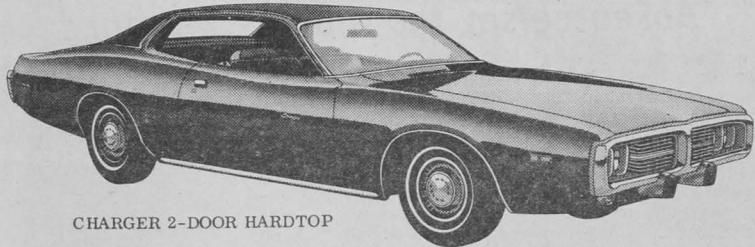


Tuesday, September 26



POLARA 2-DOOR HARDTOP

Join us for
Coffee and
Sandwiches
all day



CHARGER 2-DOOR HARDTOP

ROLFE AND WOOD, INC.

Where It's "GOTTABEE" Good

25 No. Willson — Downtown Behind the Baxter Hotel

586-5438

Serving MSU Students with the Best Car Deals and Service in Town — For 25 Years



IT'S FALL . . .

New dung fuel lauded

(AFS) A few years ago, a British chemist announced to a world that wasn't really ready for it that he had made fuel for his automobile out of chicken manure.

As he later proved to the incredulous, he had done just that. But apparently industry — and perhaps the public — was just not ready to fuel three or four-thousand dollar autos with chicken shit.

However, the process of turning non-human waste into something palatable has hardly been abandoned. At the national meeting of the American Chemical Society in New York last week, plans were unveiled for converting cattle crap into a nutritious feed for livestock.

No one was saying whether cattle would be eating their own dung, but that seems to be the plan. An even more ambitious scheme yields enough methane gas from the dung to supply the heat and electricity needed to run the entire conversion process.

Since one of the companies

involved, General Electric, has already opened a demonstration plant in Arizona to perfect the plan, it can hardly be written off as some pie-in-the-sky scheme.

The chemical key to the whole process, apparently, was the discovery by a General Electric biochemist of a particular strain of bacteria that thrives on cellulose and lignin, the primary fiber constitution of manure.

The bacteria consumes the fibers, along with the rest of the manure, leaving a residue rich in protein. It also produces methane gas, which according to some chemists can power an engine generator.

All this raises the possibility that in the near future man may reap similar benefits from his own feces. Whether man is willing, however, is another question. The cattle, of course, have little choice.

The chemists who tested the processed manure claim it's free of harmful bacteria and is

tasteless and odorless, but as nutritious as other protein supplements such as soybean, cottonseed and fish meals. Which might suggest to some a day when the ever-rising cost of meat will force man breed livestock only for its manure.

It takes little imagination to envision what the chemical-crazed food industry might do with an already nutritious substance that is odorless and tasteless. After all, examples already abound of successfully marketed products are neither nutritious nor tasty.

And if it all seems too far-fetched to imagine being propelled by gas derived from chicken shit, how about horse shit, or bat shit?

If the nation's economy were able to accommodate itself to such a conversion, an individual's ability to secure food and fuel would only be... well, his own fault. Undoubtedly, some critics will suggest such a scheme is a step backwards.

— Ted Friedman/AFS

Secondary ed aids many

MSU's Department of Secondary Education and Foundations is basically a service department, according to G. V. Erickson, department head.

Contrary to its name, the Department of Secondary Education and Foundations does not have all students preparing to teach secondary education under its jurisdiction. Most academic and professional departments offer teaching options and most students choose that route. Only those majoring in social studies, general science and physical science are directly under Erickson's domain.

"These three areas are primarily under our department because they're multi-discipline courses and don't fall into a specific subject," Erickson said.

A primary function of the department is to provide foundation courses valuable to teachers at all levels in such areas as history and philosophy of education, educational psychology, tests and measurements, audio-visual, and curriculum.

"We're a service department to all," Erickson said. "We provide foundation courses for all teachers and also students getting graduate

degrees. For example we teach six classes in educational psychology for nurses, elementary and secondary teacher. We teach audio-visual courses to people in all fields."

The department head noted his department serves over a thousand students a year, although actual enrollment is less than a hundred.

Students directly under his department have the three options. Those studying general science prepare to teach junior high school and take courses in biology, chemistry, physics, and earth sciences.

Physical science students are prepared to teach chemistry or physics on the high school level.

Erickson noted there is good teacher placement in both general science and physical science.

The other field, social studies, involves history, geography, government, sociology, and economics. This option draws the most students and, according to Erickson, has the poorest chance of employment.

The department has nine full-time faculty members and five graduate assistants. There are three people supervising student teaching this fall.

Is sterility contagious?

A representative of the Association for Voluntary Sterilization, Courtland Hastings, spoke in Bozeman recently about the benefits of both male and female sterilization.

"First, let me say that the sterilization operation is medically acceptable by all medical organizations, it is legal in all 50 states, and it is relatively inexpensive in comparison to the cost of an unwanted child.

"It is simple, safe, and the most reliable method of birth control, and it is permanent," said Hastings. Patients are usually 30-40 years old.

However, he added that if potential patients have any doubts about the finality of the operation, they should not use this method.

He stated that there was only a 50 per cent chance for reversal for male patients, and only about a 30 per cent chance for women.

Hastings explained that sterilization is the cutting and tying of a very small pair of tubes in either the man or the woman, so sperm and ovum cannot meet. Therefore, conception is impossible.

"Sterilization causes no adverse effects on an individual's sex life. No organ or gland is removed, and there is no interference at all with the operation of the whole glandular system. Masculinity and femininity are controlled by hormones, which are not affected by the operation.

"Also, contrary to fables about sterilization, women continue to have their periods, and it does not cause frigidity. In fact, in most people, it causes a noticeable heightening in sexual response. It's emancipation — a new life for a man and his wife.

"In addition, sterilization can save millions of potential broken homes caused by the fear of unwanted pregnancies," he noted.

Continuing, he said that 95 per cent of all vasectomies are done in a doctor's office with local anesthesia. The operation takes only about 15 minutes, and the man is able to go back to work the next day. Hastings said that a vasectomy causes only negligible pain.

"It will not cause any adverse psychological effects as long as the man realizes it will not affect his masculinity," stated the AVS representative.

Cost of the vasectomy runs between \$75 and \$125, and is a much simpler procedure than female sterilization, called tubal ligation.

However, Hastings said that a new method of tubal ligation called laparoscopy has been developed within the past two years. With this method, the doctor administers local anesthesia to the woman patient, makes an incision near the navel, and completes the operation in 20 minutes. The patient usually leaves the hospital within four hours.

The cost of this new "band-aid surgery" is between \$175 and \$250.

Hastings said that approximately 200 hospitals in the U.S. are using laparoscopy. John Hopkins hospital has already performed 2,500 such operations.

Changing the subject slightly, Hastings noted that the goals of the AVS are 1) to educate the public about sterilization and 2) to make sterilization available to all people of legal age, whether married or unmarried and regardless of their ethnic, religious, family, or financial

background.

"The poor should have just as much access to sterilization as the rich," he said. With this goal in mind, AVS is jointly working with Zero Population Growth and the American Civil Liberties Union to try to prevent all U.S. public hospitals from denying anybody of legal age the right to have a sterilization operation.

Hastings stated that a public hospital which denies any woman such an operation is violating her constitutional rights to control of her own person and freedom from the cruel and unusual punishment of an unwanted pregnancy.

The Association for Voluntary Sterilization is a non-profit, tax-exempt corporation set up 35 years ago as an alternative to a rapidly expanding world population, and is headquartered in New York City.

"Of course, it's not always possible for a United States Senator to be on hand for every vote that is taken in the Senate, because there are many things outside that have to do with Senate business and must be attended to, but an absentee record of over 25% is just a bit high. Too high, in fact, to really believe it was all business connected with Senate activity."

This was part of the conversation Henry S. Hibbard, Republican Candidate for the U.S. Senate had with newsmen in Missoula recently. Hibbard was pointing out that by not being on the job, Metcalf's absenteeism is not only costing much in the way of money out of the taxpayers pocket but also his voice is not

MSU THEATER

Stage shows set

"Dark of the Moon," a drama of rural Americana based on the ballad of Barbara Allen and set in the mountain southeast, will lead off the 1972-73 Theatre Arts season at Montana State University.

Performances of the classic folk play are scheduled Oct. 31-Nov. 4 in the Student Union Theatre.

A Shoestring Theatre production of "The Firebugs" by Max Frisch, an allegorical drama, will be performed Dec. 5-9.

Other productions

'Absenteeism too much' - Hibbard

being heard on legislation vital to residents of Montana.

Hibbard said a 25% absentee rate has cost the taxpayers in Montana approximately \$65,000 for a six (6) year period. That is much higher than the income for the average Montanan for the same period. Hibbard pointed out too, that the average worker must put in an eight (8) hour day, five days a week for that amount and still help pay Metcalf's salary.

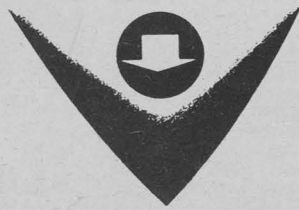
Hibbard said he can't help but feel the working man in Montana is a bit disillusioned when he realizes the State has a Senator who is wasting as much as he works hard for in a year.

On the subject of Legislation, Hibbard said, "How a person feels on any

given issue isn't as important as having a Senator on hand who will cast a vote one way or another. Metcalf has missed voting on legislation important to Montana such as bills on transportation, education, revenue, pollution control, rural development, the draft, and many more."

Hibbard said, "I would be on the job and in my Senate seat a good deal more than our current Senator has been and when the occasion should arise that I would have to be absent I would try and work it around legislation that would be important to the State of Montana. Montana just can't afford a part-time Senator who will only serve on a part-time basis drawing full-time pay."

We Point the Way...

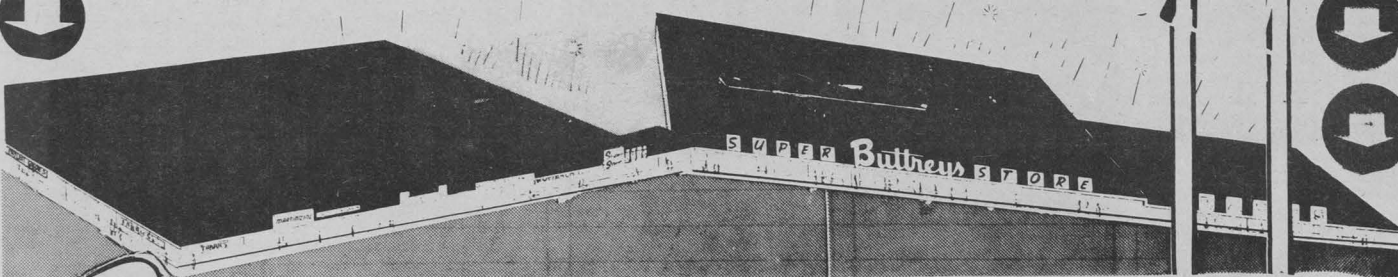
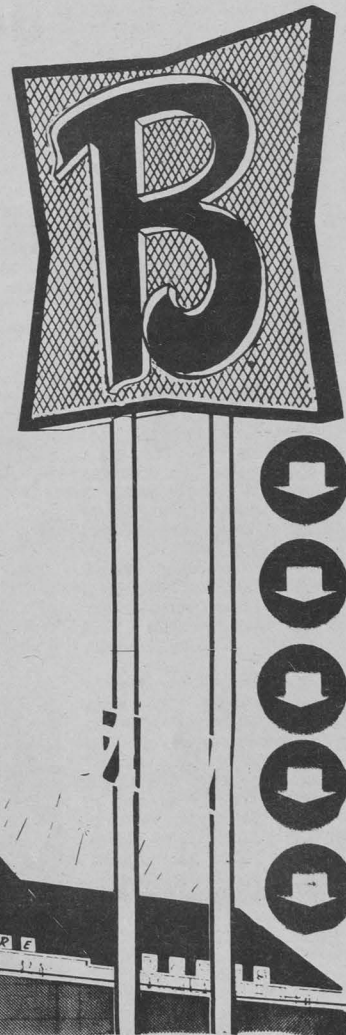


MORE SERVICE! MORE QUALITY! MORE SAVINGS!

- ★ Van Dyken-Stevenson
- ★ Bozeman OK Hardware
- ★ Monarch Clothing
- ★ Super Save Drug
- ★ Plaza Barber Shop
- ★ Buttrey's Super Store
- ★ W. T. Grant
- ★ Payless Shoes
- ★ Pin Cushion Fabrics
- ★ Shoe Inn
- ★ One Hour Martinizing
- ★ Mecklenberg Realty
- ★ Robins Hallmark Cards - Gifts
- ★ Western Bank

SOUTHWEST MONTANA'S LARGEST COMPLEX IN BOZEMAN

OPEN SUNDAYS



Buttreys SHOPPING CENTER

He shoots Bobcats yearly

"He's a veteran, a real professional," says Montana State football coach Sonny Holland.

"He's like having another assistant coach," former Bobcat coach Jim Sweeney has said many times.

The man receiving this praise, Max Hunke, recently began his 17th year of association with football, yet he's virtually unknown to sports fans.

Since 1957 Hunke has filmed all the Bobcats' home football games and most of those away from home too. He also films important scrimmages and home basketball games. There's no way to tell how much film he has shot, but 500,000 feet wouldn't be a bad guess, he says.

Hunke's job during a game is to keep the camera centered on the action and to make certain he gets all 22 players on film, just the opposite of those television closeups you see. The film is studied by the coaches — they go over each play time-and-time-again — and they need to know what every player is doing on every play.

UM dumped

Five lost fumbles, three interceptions, and too much Mike Deutsch proved to be Montana's downfall in Saturday night's 42-14 loss to the Fighting Sioux of the University of North Dakota.

Deutsch, a hard running halfback, went on a record setting six touchdown spree and gained 157 of North Dakota's 206 rushing yards, but Montana's worst enemy was itself.

After driving for touchdowns the first two times it handled the ball Montana turned the ball over a nightmarish six times before the first half ended. North Dakota marched 54 yards following the second Grizzly TD for its first score, and then broke the game open with four second quarter scores. All four were set up by Montana errors.

The Fighting Sioux pulled to within one point, 14-13, when they followed up a UM fumble with a 54 yard drive to open the second quarter. UM fumbled the ensuing kickoff over to the Sioux on the Montana eight and two plays later Deutsch put UND ahead 21-14. North Dakota's third and fourth touchdowns of the quarter came after Montana fumbles on the Grizzly 27 and 20 yard lines.

Deutsch's 63 yard run early in the third quarter was the final scoring play of the game.

Coach Jack Swarouth said, "We played reasonably well, with the exception of the turnovers, but gave the ball game away. I was pleased with the play of both the offensive and defensive lines. Tackle Gary Swearingen did a good job on defense. Glen Welch, our split receiver, had an excellent game."

Though Hunke gets consistently good film, it's in the service area where he really excels. Home games usually end around 4 o'clock and he'll have the film to the coaches by 7 o'clock.

This service is possible only because there's a film processor on campus and Hunke refuses to rest until the film is done.

"He not only gets excellent film, but his service is second to none, and I'm including major schools too," Sweeney said. "I remember when Max used to drop the film off at my house after home games. I'd hardly be through with dinner."

This type service means hard work for Hunke, but he thrives on it, probably because he enjoys photography and travel.

Actually, filming football games is a sideline for Hunke, who works in the MSU Office of Information, where he does all types of photo and audio-visual work. Photography is also his hobby and he has taken thousands of spectacular color slides throughout the west, the majority in Gallatin and Park counties and Yellowstone Park.

The film job has taken Hunke to many parts of the West and to some pretty precarious positions — sometimes he sets up his Bell & Howell camera on a press box roof, or on a 65-foot tower, or on a platform atop a light pole.

He doesn't seem to mind high places. Like a house

painter, he's used to height. Asked if he's ever afraid on one of his perches, he shrugged and said, "It all pays the same."

Things he doesn't like, however, are poor field lights encountered occasionally and cold, wet weather. "Somewhere along the way, I've run into about everything," he said.

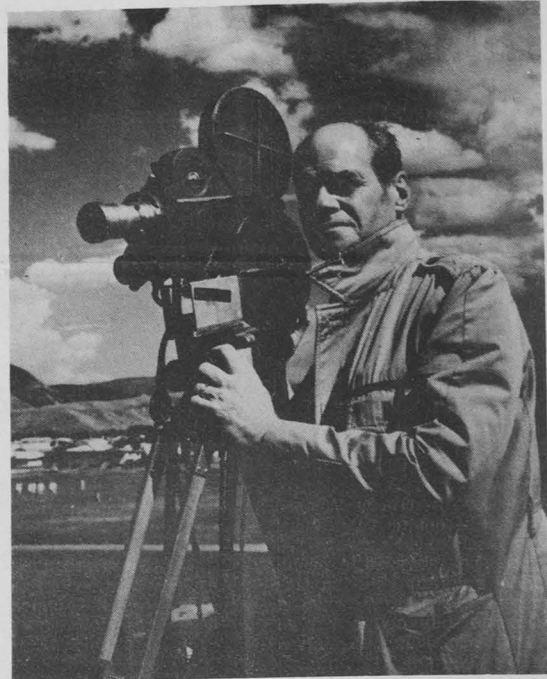
"I'll never forget a game at Ogden, Utah a few years ago. It was at the rodeo grounds there. I had to shoot in a blizzard and I couldn't keep the camera from freezing. Somehow I made it through the game and got a film out of it."

Like all film men, Hunke gets used to some shopworn comments: "Here's MSU's Cecil B. DeMille," or "Don't forget to take the lens cap off."

Hunke has never forgotten to remove the lens cap before going into action, but he says it has happened to other photographers.

His camera, incidentally, was given to the athletic department in 1947. In 1957 it was converted from spring drive to electric drive, a Zoomar lens was added and 400-foot magazines were installed.

"I've enjoyed it over the years but I don't know how much longer I'll continue," said Hunke, who's in his mid-50s. "Somebody else is going to have to take over one of these times. I'll say this, I've met a lot of fine people and had some good times. I enjoy working with the coaches and my association with the players."



Max Hunke has been filming Bobcats since 1957.

'Campus Cats' planned

Montana State athletic director Tom Parac has scheduled two special attractions each week throughout the football season for the benefit of Bobcat fans.

Parac said a program will be conducted by a member of the football coaching staff each Wednesday at 7:30 p.m. in the mezzanine room of the Baxter Hotel.

"It'll incorporate a film when one is available, along with comments, usually a review and preview session, by a member of the staff," Parac said.

Something new is scheduled each Thursday morning from 9:30-10:30 in the Big Horn-Yellowstone room of the MSU Student Union Building.

Parac said that's when the "Campus Coffee Cats" will meet and hear MSU's head coach, Sonny Holland, discuss the past week's game as well as each upcoming game.

The meeting is open to students, staff, faculty and the general public, Parac said.

He said complimentary coffee will be served at each Thursday morning session.

Sophs run to glory

Montana State has had good success in the rushing department and two of the top three ground gainers are sophomores, the Bobcats' two-game football statistics reveal.

Wayne Edwards, a sophomore tailback from Denton, is the club rushing leader with 145 yards on 27 attempts, a 5.4 average per try. The 6-0, 206-pounder carried 14 times for 106 yards in last week's 27-24 victory over North Dakota State.

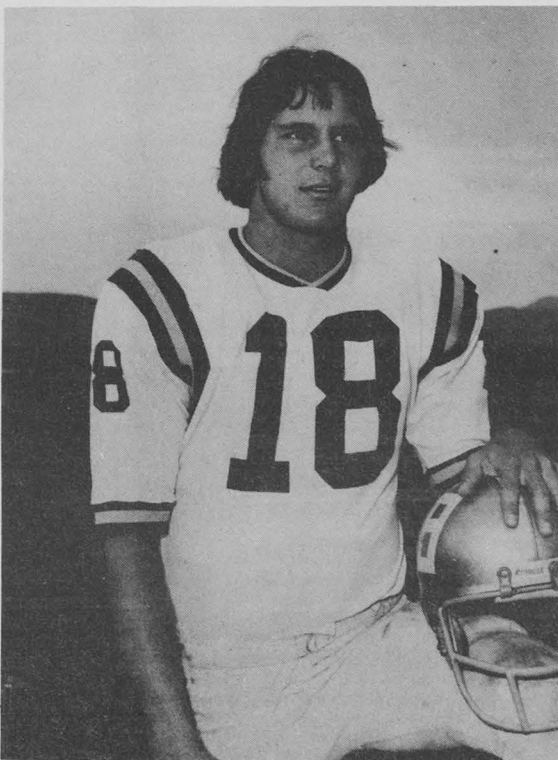
Senior quarterback Zoonie McLean of Plentywood is second with 137 yards on 35 attempts, a 3.9 average. Another soph, Bob Burns of Butte, is third with 89 yards on 17 attempts, a 5.1 mark. Burns alternates at tailback with Edwards.

Senior wingback John Hotchkiss has 39 yards on six attempts for a sparkling 6.5 average and a pair of soph fullbacks round out the figures, Bob Burkhart with 38 yards and Don Bagley with 26.

As a team the Bobcats have outrushed their two opponents 459 yards to 285. MSU is averaging 4.3 per rush.

Passing is a different story, however, as opponents have passed for 362 yards and five touchdowns to 154 and three touchdowns for the Bobcats.

McLean has completed 10-of-29 passes for 140 yards and two TDs. Sam McCullum is the top receiver with six catches for 95 yards and three touchdowns. Hotchkiss has four-for-49 yards and Roger Martin has one-for-10.



Senior quarterback Zoonie McLean has scored 20 points in the first two games of the 1972 campaign.

ANNOUNCEMENT

Library hours for the 1972-73 school year are: 7:45 am to 11 pm, Monday-Friday. 8 am to 5 pm, Saturday. 2 pm to 11 pm, Sunday.

ANNOUNCEMENT

Radical Student Union will hold its first meeting Tuesday, Sept. 26, in Room 302 of the SUB at 8 pm. There will be an opportunity to meet some new profs, etc. New students are invited.

Innovative horizontal annuals arrive

The new yearbooks arrived Tuesday morning in the midst of a rainstorm, and were distributed Wednesday and Thursday.

According to Montanan editor Larry Thompson, the annual "exceeded our expectations, especially for a yearbook that has a new format."

Thompson was talking about the horizontal design of the book, which caused problems in printing, making covers and packing. However, it is the first annual of its kind ever printed for a large school.

"We apologize for any

errors in name-spelling, but we don't think there are any major errors," he explained.

Next week, Thompson and his business manager-wife, Linda will accompany three other Montanan staffers to Dallas to discuss the upcoming yearbook with the Taylor Publishing Company.

Meanwhile, Louise Riley, head of the editorial staff, and copy editor Janice Hand will stay in Bozeman and run the office.

Those attending with Thompson and his wife will be darkroom technician Bob Thomson, photo editor Pete

Freivalds, and managing editor Mack Frost.

If any students who were here last year have not received their copy of the Montanan, they can get it by bringing last year's ID to the yearbook office.

This year's Montanan, the first one copyrighted in MSU's history, will be the basic model for next year's issue. However, Thompson noted that financial difficulties will force his staff to print 32 less pages for the 72-73 book, although there will again be 24 pages of color.

Night class offers credit

The MSU School of Commerce will offer night lecture classes in its Critchfield, assistant professor of commerce.

The course covers basic concepts of commercial real estate, including legal aspects, financing, appraising methods, and marketing procedures.

MSU offers either three or four university credits for the course, depending on whether or not additional discussion sections or projects are taken. Persons who are not regularly enrolled MSU students may attend the classes for a special attendance fee of \$9 per credit hour.

Classes will meet Tuesday from 7-10 pm, with the first sessions set for Sept. 26 in 301 Reid Hall.

Instructor will be Lee

Further information on the course is available from the School of Commerce, telephone 994-4421.

MSU center rallies against ills

Learning how to get things done through long-range planning and regional cooperation may be one way to help eastern Montana combat social and economic problems.

Anne Williams, coordinator of social science research in Montana State University's new Center for Interdisciplinary Studies, indicates that one of the center's current projects is aimed at organizing just that kind of cooperation.

The center is doing the basic research and developing an educational program to provide the necessary guidance — the tools — for citizens of 28 eastern Montana counties to help themselves solve regional problems.

Among those problems are: lack of industry and trained leaders, declining population, few jobs for the young, scarcity of health care and a lack of recreational and educational facilities.

In attempting to find cures for these difficulties, the MSU center is working with the South Central Montana Development Federation, composed of 10 counties, and the Economic Development Association of Eastern Montana, encompassing the 18 easternmost counties of the state.

"Our goal," Mrs. Williams

said, "is to help people know more about how to help themselves and where to go to get the help that is needed."

"Our purpose," she added, "is to provide research and education in community problem solving, planning and organization. We have provided training for those citizens concerned so they are prepared to follow through with appropriate development projects."

Center researchers have, for example, been involved in studies of other communities in the United States which have successfully combated social and economic ills similar to those of eastern Montana. Where programs which seem adaptable to eastern Montana's needs are found, they are passed on to local leaders for possible use in their communities.

In a closely-related project, Mrs. Williams and center research associate William R. Lassey are studying the adequacy of community services such as hospitals, recreation and facilities for the care of the aged in 18 counties in the region.

This is part of a 10-state regional research effort expected to come up with recommendations for improving the quality of community services in sparsely populated areas.

Examples of such joint problem-solving, Dr. Lassey said, might be cases in which several neighboring communities pool money and talent to improve schools or hospitals, to provide better utilization of water resources, develop small industries or recreation programs.

"Many things can be done jointly which would be difficult to do alone," Dr. Lassey pointed out, "and the center can do much of the basic research and development for such action programs."

Applejack to appear

The MSU veterans organization will be presenting their first entertainment of the year Saturday night when Applejack appears in the SUB Ballroom.

According to Jack Herron, president of the organization, there will be a \$1.50 charge per person.

The show will last from 9 til one.



"The Most In Dry Cleaning"

J. & M. Cleaners, Inc.

"One-Hour Martinizing"

Two Locations

Buttrey's Shopping Center — 586-2973



Northgate Shopping Center — 587-1722



Health Center adds to services

The MSU Health Center has, for the past several years, arranged with a private insurance company to provide accident and health insurance, on a voluntary basis, to MSU students as a supplement to the Health Center services.

This supplemental insurance has provided, and still provides in its program, coverage of automobile accidents and vacation periods between quarters, including summer, when the Health Center Term Coverage is not in force.

Medical or surgical care provided outside the confines of the Health Center is also the financial responsibility of the student.

If you are not covered through some personal program or family plan with

your parents it is recommended that you investigate the plan offered by Mutual of Omaha Insurance Company.

Their representative will be on campus during registration and each week until the enrollment deadline, October 18, 1972.

The annual premium for a single student is only \$21.50; for student and spouse, \$80.25; for student and spouse with one child, \$133.25; for student and spouse with 2 or more children, \$186.25.

This premium is pro-rated downward for students who do not enroll until the winter or spring quarters.

Coverage begins on September 14, 1972 or the date of enrollment in the plan, whichever is later. The coverage ends on September 14, 1973.

"Oh, take the cash and let the credit go"

Omar Khayyam

Visit the new bargain section

at

Country Book Shelf

1528 West Main -

in back of the Red Barn

9 to 6, Monday thru Thursday, 9-7:30 Fri. and Sat.



WELCOME BACK MSU



ROGER BERNA
General Manager



The staff and I would like to take this opportunity to welcome the students and their faculty to Bozeman and Monarch Clothing.



VALUABLE COUPON

This Coupon Is Worth **\$5⁰⁰**
Toward The Purchase of
Any Coat or Jacket
In The Store

(Certain Fair Trade Items Must Be Excluded From This Offer)

VALUABLE COUPON



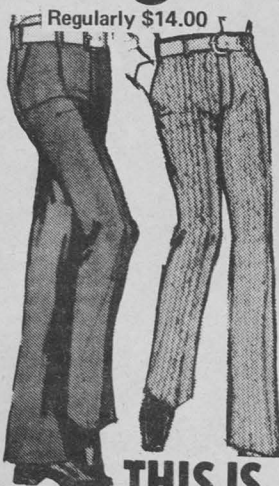
Mens & Ladies

One Group

FLARES

\$6⁹⁷

Regularly \$14.00



Mens & Ladies

SHOES

Any Shoe In Our Entire Stock!

10% off



Long Sleeve

SPORT SHIRTS

\$3⁹⁷

AND

\$4⁹⁷

Regularly \$7.00 Up



Buttreys Center

THIS IS YOUR SUNDAY — OPEN NOON 'TIL 5 P.M.

Board approves Mont PIRG

MontPIRG (Montana Public Interest Research Group), a student organization based on the ideas of Ralph Nader, has been approved by the state Board of Regents.

The organization, approved on a conditional basis, will be asking for voluntary \$1 contributions from students next winter quarter at MSU, University of Montana, and Eastern Montana College.

Before a school can ask for voluntary MontPIRG funds, the Board of Regents said that at least 50 per cent of the students at the school must approve of the plan by petition or referendum.

Fifty-three per cent of MSU students approved the plan last spring.

Also, MontPIRG cannot show an appreciable drop in support, without being subject to a student review in the form of a vote.

In addition, all expenses incurred by the school when collecting the \$1 fee during registration would have to be paid for by MontPIRG. There would be a minimum fee of at least one per cent of all money collected.

Finally, MontPIRG must submit to an independent audit which will be made public.

Ken Anderson, an engineering student at MSU and one of the MontPIRG leaders on this campus, announced that it is his group's plan to solicit project ideas from the student body, faculty members and local citizens this fall to determine what the most urgent social problems affecting this state — from inadequate housing to polluted air and rivers to poor working conditions in mines and factories.

Next winter quarter, if MontPIRG has collected enough money, it will begin operating on these problems, using the money collected to hire a full-time legal consultant to handle any possible legal problems and court action.

Anderson explained that it is the hope of MontPIRG members that students will voluntarily investigate problem areas that the student body deems most urgent. Then, it is hoped, such students will submit their findings to their advisors and be given academic credit for the projects.

MontPIRG would then publish these findings the following quarter.

Anderson said that MSU MontPIRG headquarters will again be in the SUB, next to the Circle K bookstore.

Montana State University's 1972 Homecoming will be held Oct. 19, 20 and 21, honoring the classes of 1947 and 1962, and centering on the Bobcat football contest Oct. 21 against Boise State.

Oct. 19, students will participate in an all-campus vote to select from three co-eds the girl who will reign as queen over the Homecoming celebration. Candidates for the title are Kathy Laird, Linda Phillippe and Debbie Thaut.

Alumni returning for the weekend will register Oct. 20

at either the Baxter Hotel or the Student Union.

Saturday's schedule on Oct. 21 begins at 7:30 am with a Bobcat Booster Breakfast at the Baxter Hotel, followed by a parade in downtown Bozeman at 10 am.

The traditional Alumni Reunion Luncheon is scheduled for noon in the Student Union.

Highlight of the weekend will be the football game, which will begin at 2 pm on Van Winkle Field in Bozeman.

From 4-6 pm, living groups, including fraternities, sororities and residence halls, will hold open house.

Saturday evening's schedule includes the Class of 1947 reunion dinner at 6:30 pm at the Holiday Inn, the Bobcat Lair at 7 pm in the Baxter Hotel and Big Name Entertainment in the Fieldhouse at 8 pm.

Joe May, executive secretary of the MSU Alumni Association, said selection of performers for the Homecoming Show Oct. 21 is still pending. Details will be worked out with the ASMSU Campus Entertainment Committee, he said, and announced at a later date.

Selective service announces ceiling

The Selective Service System recently announced that the draft lottery number ceiling for the last three months of the year will be RNS 95. Men with lottery numbers through RSN 75 are being inducted in August and September. The year-end ceiling of RSN 95 assures almost three-fourths of the men who faced induction during 1972 that they will not be called this year.

Approximately 15,900 men will be inducted during the October-December period,

with the majority of inductions taking place in October and November. All available men with RSNs of 95 and below who are classified 1-A or 1-A-O and are members of the 1972 First Priority Selection Group will receive at least 30 days notice of their induction date. Conscientious objectors, classified 1-0, with RSNs of 95 and below will be selected for alternate service in civilian jobs at the same time. All eligible men with RSNs of 95 and below who become available for

induction or alternate service after mid-November when the last induction orders for 1972 will be mailed will be liable for induction or alternate service during the first three months of 1973 should there be calls during that period.

The inductions for the last three months of 1972 will bring the total of men inducted into the Army in 1972 to approximately 50,000, the number which Secretary Laird indicated would be required during 1972. More than 94,000 men were inducted during 1971; 162,500 in 1970.

Grants

KNOWN FOR VALUES

In The Buttrey Shopping Center

WELCOME

University Students
& Faculty

"We'd Like To Serve You!"

Store Hours:

Monday thru Fridays
9 a.m. — 9 p.m.

Saturdays
9:30 a.m. — 9 p.m.

Sundays
Noon — 5 p.m.

We Carry A complete
Line of Curtains, Drapes,
Drapery Hardware

Whoppers

Malted Milk Balls

Reg. 78c pkg. **2 for \$1.00**
NOW

Matchmate

Towels

Reg. \$1.154 **\$1.33**

Bath Towels

Reg. 94c **77c**

Hand Towels ..

Reg. 54c **37c**

Wash Cloths...

Kantrun

Panty Hose

Reg. \$1.48 pr. **\$1.17**
pr. SALE

Sheer Natural S-T-R-E-T-C-H

Panty Hose

Reg. 88c pr. **51c**
pr. SALE

Men's 100%

Acrylic Knit

Shirts

Solid Color or Stripe

Reg. \$4.24 **\$2.97**
SALE

Bonded Knit

Remnants

Reg. \$2.49 yd. **\$1.77**
yd. SALE

ENJOY
BETTER LIVING
WITH GRANTS CREDIT

Grants KNOWN FOR VALUES...COAST TO COAST



Welcome MSU Students & Faculty

We are headquarters for all your classroom & home sewing needs.

Large selection of fabrics, sewing notions, trims, ideas . . .



Choose from:

Trapper Plaids

100% Acrylic

\$3⁴⁹ yd.

Machine Washable

Wide Wale Corduroy

100% Cotton

\$1⁷⁹ yd.

Sunset Suede Cloth

"The Leather Look"

Machine Washable

\$3²⁹ yd.

100% Polyester

Double Knits

\$3⁸⁸ to \$4⁹⁸ yd.

Also Visit

Our Drapery Department

* Custom Draperies

* Upholstery

* Wall Paper

* Decorator Shades

In The Buttroy Shopping Center

Store Hours:

Monday thru Friday 9 a.m. — 9 p.m.

Saturday 9 a.m. — 5:30 p.m.

Fabrics by Pin Cushion

Chemical engineers prefer west

Of all 16 western states, Montana ranks first in the per capita production of chemical engineers.

This somewhat surprising fact is revealed in a recent issue of Chemical Engineering Education, a professional journal that spotlights the Montana State University Chemical Engineering Department in a feature article.

The magazine notes that Montana's output of chemical engineers is even more remarkable when it is taken into account that MSU has the only department in the state training students in that field, while many other states have several schools doing so.

Further, among the 28 chemical engineering departments in the western U.S., MSU is exceeded only by two very large schools, the Universities of Washington and California, in total number of graduates produced.

Dr. Lloyd Berg, head of

chemical engineering at MSU, notes that his department's enrollment has increased 150 percent and the size of its graduating class doubled in the past 12 years.

The impressive quantity of graduates in chemical engineering produced at MSU is matched, moreover, by the caliber of its students.

For example:

— Thirty percent of the department's students were on the honor roll during the 1971-72 school year.

— Career placement of the Class of 1971 was double the national average.

— In three of the past four years the Outstanding Engineering Student as designated by the Montana Society of Engineers has been a chemical engineer.

— In the past five years 14 percent of the senior men's honorary, Septemviri, has been composed of chemical engineers, though students in that major compose less than 3 percent of the total MSU student body.

Students endorse demo ticket

WASHINGTON — The Student National Education Association, the nation's largest individual member association of college students, has endorsed the McGovern-Shriver ticket. This is the first time the 80,000-member organization has backed a presidential candidate.

Tom Creighton, president of the student NEA, which is affiliated with the 1.2 million member National Education Association, announced the endorsement at a news conference here today at the Statler Hilton Hotel. "McGovern has often stood alone in his battles to represent our viewpoints," said Creighton. "His record

shows his commitment to our country's youths and their concerns."

Creighton also contrasted McGovern's record on education with President Nixon's, criticizing Nixon for vetoing four pieces of education legislation during his first term.

McGovern-Shriver National Youth Director Ed O'Donnell said, "This endorsement by an organization of 80,000 young people is a better indication of new voter sentiment than the recent Gallup poll of new voters in which only 221 persons were interviewed."

The Student National Education Association is made up entirely of future teachers.

Students tour Europe

Now any student can independently earn his or her trip to Europe by simply obtaining a paying job in Europe. A few weeks work at a resort, hotel, or similar job in Europe paying free room and board plus a wage more than pays for the new \$165 round-trip Youth Fare being offered by the scheduled airlines. A couple more weeks on the job earns money for traveling around Europe before returning home.

Thousands of paying student jobs are available in Switzerland, France, Germany, Italy and Spain. Neither previous working experience nor knowledge of a foreign language are required for many jobs. However, to make certain every student gets off to a good start on their job the Student Overseas Service (SOS) provides job orientation in Europe. Jobs immediately available

include resort, hotel, restaurant, hospital, farm and sales work. Jobs almost always pay free room and board in addition to a standard wage.

Jobs, work permits, visas, and other necessary working papers are issued to students on a first come, first served basis. Although thousands of jobs are immediately available, applications should be submitted far enough in advance to allow SOS ample time to obtain the necessary working papers and permits.

Any student may obtain an application form, job listings, and the SOS Handbook on earning a trip to Europe by only sending their name, address, name of educational institution, and \$1 (for addressing, handling, and air mail postage from Europe) to SOS — Student Overseas Services, Box 5173, Santa Barbara, California 93108.

Cats to tangle with Cal Poly

MSU meets another defending league champion Saturday night as it continues play outside the Big Sky Conference.

The Bobcats' foe is Cal Poly at San Luis Obispo, 1971 California Collegiate Athletic Association (CCAA) champion. Game time at the Mustangs' 7,000-seat stadium is 9 p.m. (MDT).

Montana State played North Dakota, the North Central Conference champion in the opener, and met North Dakota State, last year's MCC runnerup, this past weekend.

The Bobcats are returning to San Luis Obispo after a 12-year absence, eager to take up where they left off then. On

that last visit they escaped with a 22-18 victory, scoring on a 45-yard screen pass in the final minute of the game.

Cal Poly, which won 6 and lost 5 a year ago, again has prospects for a good team, says Coach Joe Harper. The Mustang mentor was worried about depth in both the offensive and defensive backfields, but is breathing easier after a 42-0 season-opening victory over Hayward State.

MSU coach Sonny Holland says, "Cal Poly has good size up front on their defensive unit and they're very aggressive. Also, they have some fine athletes on offense. They have good team speed, which could

pose a real problem for us."

The Bobcats' enthusiasm is at a new high this week following their 27-24 come-from-behind victory over North Dakota State. It was the sixth loss for the Bison in seven seasons.

"It was a great team effort the second half," Holland said. "Our kids seemed to respond to the success of one another. The defense went out and did a job early in the third quarter. That seemed to inspire the offense."

It was the second week the Bobcats fought from far behind, only this time they managed to pull out a victory. After trailing 21-7 at halftime, MSU scored once in the third

period and twice in the fourth. The go-ahead TD came with 22 seconds left in the game.

Defensive standouts were tackles Curt Brandon, Bill Kollar and Wayne Hammond and linebackers Dusty Birkenbuel and Ron Ueland. "Hammond had a great game," Holland said. "He's the biggest man on the team (6-4, 244), yet he twice was down field first to make the tackle on kickoffs."

Holland was pleased with the offensive line. "Our linemen blocked consistently well against a good defensive front," he said. "It was a great double team block by Leon Potkay and Dave Myers that broke Wayne Edwards for his

long touchdown run."

Holland also had praise for tackles Allan Young, a senior, and Jim Boyle, a 6-3, 236-pound sophomore.

"The play of our fullbacks and tailbacks was good all night," Holland said. "They ran and blocked hard."

Edwards, a sophomore from Denton, had his first 100-yard game as a Bobcat. He rushed 13 times for 106 yards. Quarterback Zoonie McLean rushed 25 times for 89 yards and sophomore Bob Burns ran seven times for 41 yards.

Another bright note: the Bobcats came out of the game with no injuries, so will go into the Cal Poly game in good physical condition.

JV squad replaces depleted frosh team

There is a new facet in MSU football this fall — a junior varsity team rather than a freshmen team.

According to head coach Sonny Holland, there are two reasons for this switch. One, a limited number of scholarships restricts the number of freshman players each year. Second, since the Big Sky Conference has ruled that freshmen are eligible to play varsity ball, the ranks of the first-year men have been

reduced for non-varsity action.

Holland stated that the jv squad will be handled by the regular coaching staff plus three graduate assistants — former Bobcat standouts Gary Gustafson and Frank LaMasse, and a graduate student from Missouri, Billy Ray.

The jv team will play three games this fall. The first game will be against the U of M Cubs September 27. Two home

games will wrap up the schedule, a tilt with the Idaho State junior varsity October 6 and a match with the Western Montana College varsity October 20.

The final jv game of the year will be a prelude to the Bobcat Homecoming game, scheduled for October 21 against Boise State.

Holland said that the junior varsity will consist of freshmen, sophomores, "and possibly one or two juniors."

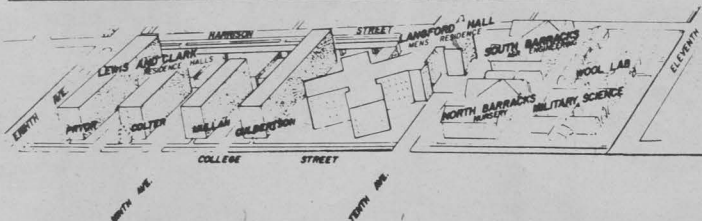
Presently, the only freshman Bobcat regular is Pat Bolton, a kicking specialist from Butte.

However, Bill Crowley, a defensive back from Billings, plays on the kickoff team.

Other freshmen who have made the Bobcat traveling squad during the first two games are fullback Roscoe Schmidt, quarterback Brooks Laning, defensive tackle Bert Markovich, and defensive end Gary Fetveit.

Holland appeared happy with the potential of his freshmen offensive backs, both on the varsity and junior varsity.

Likely freshmen starters on the jv offensive backfield are Laning or Mike Holder at quarterback, Schmidt or Steve Cosoer at fullback, Steve Kracher or Gordon Hale at running back, and Alan Reichow at wingback.



Welcome!

COLLEGE STREET



Don W. Liebsch
President

Daniel K. Edwards
Vice President

Donna Brewer
Assistant Cashier

Karen Wheat
Teller

Nancy Gaustad
Bookkeeper

Gail Fraley
Teller

Cheryl Skjeret
Secretary

Bonny Hanke
Teller



MSU Students Welcome to Bozeman and Western Bank

- FREE STUDENT CHECKING ACCOUNTS
- NO STOP LIGHTS TO WORRY ABOUT
- PLENTY OF FREE PARKING
- "ULTRA-MODERN" DRIVE-IN SERVICE
- MOMENTS FROM CAMPUS
- WE WILL TRANSFER YOUR ACCOUNT TO THE WESTERN BANK AT NO CHARGE

WESTERN BANK OF BOZEMAN



Phone 587-1231

1632 W. MAIN STREET

19th STREET



Buttrey's Store Hours

Mon.—Sat. 8-10

Sunday 10-7

Prices

Thurs.,

21-

GRADE A CORNISH

Game Hens

22 oz. birds

79¢

EACH

Chunk Tuna

DEL MONTE

6 1/4 oz. can

41¢

Crisco

SHORTENING

3 LB. CAN

89¢

FROM OUR BAKERY

Cookies

RAISIN OATME



2

DOZ.

SPRINGDALE GRADE A

Fryer Parts



2 LB. BOX

98¢

GLAZED APPLESAUCE



Cake Donuts

18

FOR

BUTTREY'S

Facial Tissue

200 Count Box

5 FOR \$1.00

FOR

DRINK MIX

Orange Tang

27 oz. jar

\$1.09

BUTTREY'S

Salad Dressing

QUART JAR

43¢

ROTH

Whole Hams

Lb.

59¢

3

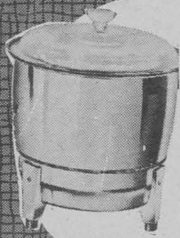
U.S. M

Caulifl

Large H

5

Active—
Sat.,
23



4 Quart Mirror Brand

Corn Popper

with cord and see thru cover
Reg. \$3.49

\$ **2**⁸⁷



Join

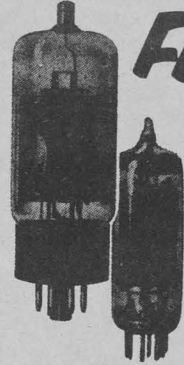


Film Club

Every 7th Roll Processed

FREE

FOR FULL DETAILS VISIT OUR FILM COUNTER!



FREE!

RADIO & T.V. TUBE TESTING

Test radio and TV tubes at your convenience at Buttrely! It's easy to do-it-yourself on our modern electronic equipment. If new ones are needed, we carry a complete selection of tubes at Budget Prices!

25% off

Mfg. List Price

Ironing Board

Full Size with adjustments for 8 different positions



\$ **3**⁸⁸

Reg. \$4.99

PARISIAN

French Bread

\$ **1**⁰⁰

LOAF



Filler Paper

500 Sheet College Wide Ruled

Reg. 99c

57¢

SEAMLESS STRETCH

Panty Hose

3 Shades in Beige, Coffee and Spice

Seamless Stretch

2 Sizes

Reg. 99c

39¢



ver



Student

Bic Pens

8—Bic Ball Point Pens

Reg. 99c

43¢

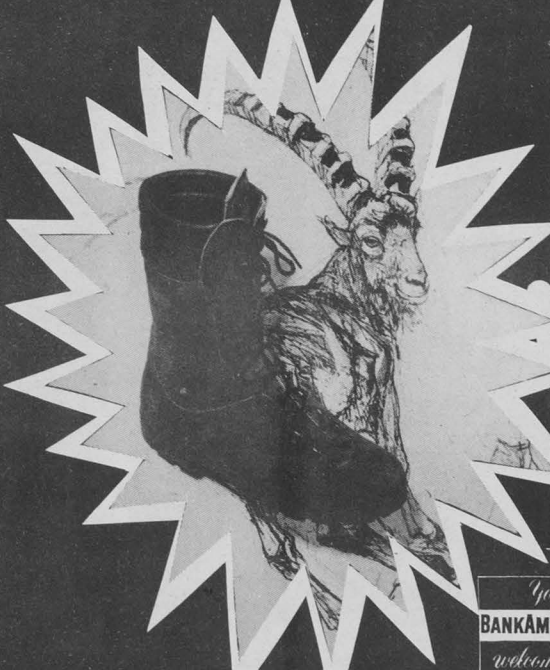
EACH

... and you
thought all shoes
were alike.

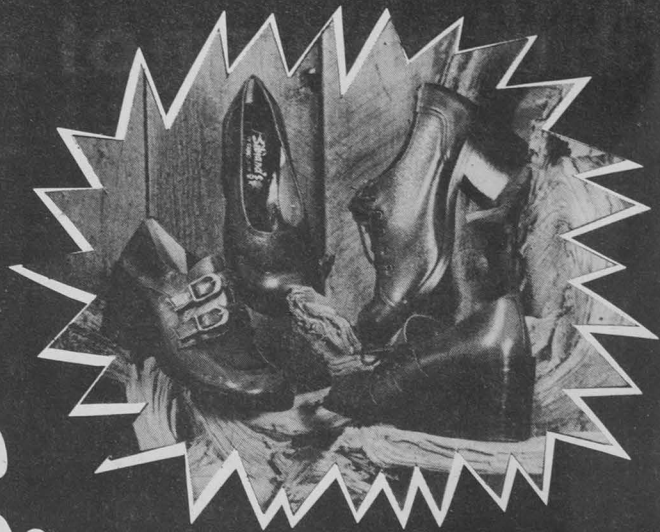


THE
GOOD
STUFF

TIE ONE ON



Your
BANKAMERICARD
welcome here



ON
THE
SCENE



VALUABLE COUPON

FALL SHOES

PRESENT THIS
COUPON WITH I. D. WHEN
PURCHASING ANY
SHOES IN STOCK
AND GET **20% OFF**

COUPON EXPIRES OCT. 1, 1972

S H O E I N N

BUTTREY'S SHOPPING CENTER

Hitchhiking for fun and personal profit

**By John Brand
Alternative Features Service**

"Look, John, I'm trying to help you. Now, I'm giving you this warning and I'm telling you to grab a bus outta this state before we catch you again because if we nab you another time you'll be in jail until Monday and if you don't have any money you'll stay there until somebody can post your bail. And if no one posts your bail, you're screwed, John. So I'm warning you. I'm trying to help you; it's against the law to hike on this road. It's for your own protection, John. Cars hit people like you all the time; why, just the other night we scraped a couple of packers off the interstate and lifted them to the morgue. So I'm warning you, John."

Somehow the whining speech of this polished and starved man in blue doesn't quite ring true. How can he be helping me if he's throwing me off the road, telling me to catch a bus or take a back road (grave) and traveled only by farmers and local milkmen) 150 miles to the Kansas border? And since I've only \$20 to get to New York, how can I spend \$17 of that just to leave Colorado?

My hitchhiking days started in the butch-haircut innocence of the late fifties, thumbing truckers out of LA to the Mojave Desert towns, to Reno, Lovelock, Boise, and back.

Like most suburban boys, I'd also thumb to and from school, or to the beach, or occasionally to the mountains. I'd go on long trips to get out of the mash and clatter of city

life — sometimes just for kicks, to see how far I could get.

There was no one waiting for me on the other end, nobody to stop me with apple pie or stuff a few peaches in my pack. I'd turn around, dead broke, and hitch back home.

Church couldn't hold me, or take me into myself, so on Sunday morning I'd be out on the freeway ramp, salami and rye under my shirt and a pair of trunks buttoned beneath my Levi's, en route to Malibu or Santa Monica. My parents, God save them, would be back in the varnished pews, praying for my life and the forgiveness of my sins.

I hadn't even a ruck-sack in those days, only a bundle wrapped under my arm like a true vagabond. "Organized" hitching hadn't come about yet, so if you looked freaky, you could count on no ride.

Nowadays, hitching is an art of travel enjoyed no longer as something "different" by an esoteric few; but by thousands of youths each day, making their way cross-country to homes, universities, communes, religious colonies, abortion clinics, rock festivals, and anti-war demonstrations.

The road is not a lonely place. Interstate highways (I-70, I-40, I-80 — no longer

romantically called "66" or "The Denver Route" or "The Lincoln Highway") are crowded with people, sharing nylon-aluminum knapsacks loaded with folding tents, sleeping gear, freeze-dried ice cream, Zen bibles, medicinal herbs and homegrown dope.

Looking freaky is no longer a liability in obtaining a ride on most major roads; there's probably another freak conveniently on his way to the same place you are, bumping along in a van, converted milk truck, model-T, or even grinding along in a semi.

Hitchhiking is pretty much a "functional" effort these days. The U.S.A. is choking on poverty; people are running loose without a dime in their overcoats.

The hitchhiker is no longer an eccentric out on a spree. You're more likely to meet a serious dude AWOL from the army (on one recent trip at least a third of the hitchers I met were), a college student going home for a break, a couple en route to Boston from Berkeley with a package of educational toys under their arms, or a poet like myself going to rap and read and hold a workshop at some distant university for a little bread and brotherly interchange, or just "simple" people out looking for work — hitching

because they've no money for a car or because they think there're too many automobiles for too few people and are determined to boycott the car culture by buying a pair of shoes and polishing their thumbnails.

But hitchhiking — and hitchhikers — are in danger. Thumbers need protection — but not the Man's kind of "protection," where he writes you a warning ticket while checking your eyeballs through his mirrored shades, seeking bloodshot rings or dilated pupils.

In states as strict as Ohio or Colorado, where you have to possess a sort of transcendental power to thumb a ride, you must stand opposite the traffic going your way and act the idiot, hands in pockets trying to meditate a ride on the other side of the interstate highway; in other words, hitchhiking is illegal there.

The penalty can be anything from a \$25 to \$100 fine to a jail sentence — and there's always a gross delay in cross-country travel even if you're not busted. (A thorough coverage of the pedestrian laws in all the states, plus some pretty gruesome tales of bad rides caught in-between good ones, comes in a new book called **Side of the Road: The Hitchhiker's Guide to the United States** (April, 1972,

Simon and Schuster, paperback, \$1.95) which was written by Ben Lobb and Sarah Links.)

But it isn't just outrageous laws that imperil the hitchhiker; it is the roads, and the automobiles themselves.

City and country roads in more progressive communities now have lanes for bicyclers. Yet nothing is provided on interstate throughways: there're no lanes for cross-country bikers or for people without motorized means of travel. No wayside stations are set up for the hitchhiker. The only conveniences offered thumbers are bulletin boards at a few universities where possible rides to such-and-such destination are listed.

For the true protection of hitchhikers and the preservation of hitch-hiking as a means of travel, much can be done. Restrictive laws must be repealed. Separate lanes could be furnished on interstate highways — the routes most commonly traveled by thumbers because they provide the most direct rides and the best chances of getting picked up.

And would it really be unfeasible to establish wayside A-frames or hostels where the overnighiter may be put up free or at minimal charge and have shower and a bowl of hot soup?

STUDENTS

Kirkwood Baptist Church Welcomes You

Don't forget your spiritual growth and education.

COME WORSHIP WITH US

EACH SUNDAY: 7:00 A.M. Prayer Breakfast
9:45 A.M. Sunday School
11:00 A.M. Worship Service
6:30 P.M. Church Training
7:30 P.M. Worship Service

WEDNESDAY: 7:30 P.M. Prayer Service
8:30 P.M. Youth & Adult Choir

NURSERY PROVIDED

"the difference will be worth the distance"

KIRKWOOD BAPTIST CHURCH

15th Ave. & Beall
(Behind Buttrey's)
John R. Lane, Pastor
John Foster, Music Director

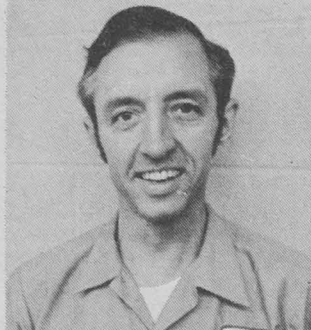
COME IN AND MEET THE NEW OWNERS

**NOW
OPEN
SUNDAYS
NOON to 5**

Grand Opening

**STORE
HOURS:
8:00 A.M.
to
9:00 P.M.**

Thursday-Friday-Saturday — September 21-22-23



**Marvin Leister
Co-Owner**



GRAND PRIZE 10-Speed Bicycle (value \$84.95)

The front wheel of this bike will be motorized with a speedometer attached. The winner will be the person who can calculate the nearest amount of miles after running for 12 hours on Thursday, 12 hours on Friday and 3 hours on Saturday.

(Drawing at 5:25 p.m. Sat., Sept. 23)



**David Tubbesing
Co-Owner**

FREE DOOR PRIZES

- | | VALUE |
|--|--------|
| 1 Quart size food jar by Thermos | \$4.59 |
| 1 Stainless steel double kitchen sink | 31.95 |
| 2 Auto (spring on) head rests each | 5.98 |
| 1 Bike head light and generator set | 6.35 |
| 1 Delta kitchen sink faucet | 16.60 |
| 1 Tow cable | 5.95 |
| 1 Renaissance serving tray
by Corning | 12.95 |
| 1 True Temper 16 oz. hammer | 7.79 |
| 1 Toastmaster toaster | 23.50 |
| 1 Faucet sink fixture for kitchens | 16.75 |
| 1—50-foot 3-wire cord set by Mid State | 5.00 |
| 1 Closet seat by Beneke | 4.67 |
| 1 10-gal. plastic trash can | 3.65 |
| 1 Plushy bath scale by Hanson | 7.89 |
| 1 50-ft. measuring tape by Lufkin | 7.85 |
| 1 Hibaccl | 5.95 |
| Set of 2 Wizard standard heavy duty
shocks (any pair in stock to
fit your car) | 12.98 |
| 1 Wizard Citation upright vac cleaner | 49.95 |
| 1 Osterizer Blender | 28.95 |
| 1 Humidifier by Presto | 59.95 |

**OVER
\$500⁰⁰
PRIZE
VALUE**

**JUST
COME IN
AND
REGISTER**
(No Purchase Necessary)

**Over 1000 Items To Be Given Away.
Fly Swatters—Coin Purses—Car Wax
Plastic Litter Bag—Furniture Polish**

SPECIALS

**POP
and
BALLOONS
for
The Kids!**

	Regular Price	Sale
Mirro Electric Corn Poppers with Cord	\$4.99	\$2.89
King of the Road oil additives	79¢	39¢
Wizard standard spark plugs	79¢	39¢
White Mountain apple peeler slicer	6.59	3.95
Garbage cans, 20 gal. galvanized	3.99	2.39
Western Auto stainless steel coffee maker	20.88	14.88
Western Auto 4 slice toaster	21.44	15.44
Bike tire and tube combination (3 sizes)	4.74	2.89

**FREE
COFFEE
and
DONUTS**



**Winchester
Model 70
RIFLE** Calibers 30/06-
.308-.243-.230
\$119⁹⁵
Regular \$174.75
300 Mag., 22-250 Reg. 189.95—\$129.95

**Remington
Mohawk
22 Calibre
Long Rifle—H. Vel.**
SHELLS
Regular 79¢
49¢

**All Other
GUNS
In Stock**
15% Off

**Winchester
Model 770
RIFLE** Caliber
30/06
Regular \$139.95
\$99⁹⁵
300 Mag. and 7 mm
Regular \$159.95—\$109.95

Bozeman Hardware Western Auto Store
IN THE BUTTREY SHOPPING CENTER

Pot is popular proposal

By Michael Betzold
Alternative Features Service
 Legalization of pot is becoming a popular cause, with petitions to put the question to a vote now in circulation in several states. I think it's a cause ill-conceived.

Pop revolutionaries like Abbie Hoffman have made extravagant claims for marijuana's revolutionary potential. Indeed, the spread of dope-smoking from ghetto to suburb and campus did seem to herald exhilarating social change during the sixties. But that change has been slow in coming, and the myth now seems to be so much hope.

Now, unless you're prejudiced or stupid, you know it's as harmless as alcohol, doesn't lead to hard drugs, or turn you into a Communist.

In fact, many good anti-communists smoke pot. Once the more hardened traditionalists soften, die, or try it themselves, marijuana will be regarded as just another social amenity.

From a radical viewpoint, the effects of widespread, accepted and legal use of grass are problematic. The Black Panthers, stern revolutionaries, long ago banned all drugs from their politics.

Operating from the vantage-point of the colonized Black, they saw how drugs kept people down and only stoned the revolution.

The search for a "high" substitutes an ephemeral goal for the awareness of life's ugly realities. Pot can serve the same purpose for potential white revolutionaries.

At some level of use, and at

some ebb of political awareness, grass ceases to be liberating and becomes dulling. It makes the present liveable. Especially in suburbia, pot seems to serve the same function for teenagers as booze, sex and success serve for their parents; they all make boredom and isolation palatable.

You needn't assume a conspiracy in government, but only that some powerful men in this country are intelligent (which is at least somewhat plausible), to speculate that our leaders are looking on drug use with increasing favor. Like selling whiskey to the Indians, it works. A lot of frustrations (and potential trouble) are dispelled by getting loaded.

Similarly, legalization of marijuana can help to head off potential trouble for the American economy. Our system of state capitalism requires predictable consumers, and, in pot, the economy will find one more steadily expanding market among young people.

It's a well-known fact that the big tobacco conglomerates are already gearing up to corner this huge new market. The proponents of legal pot shrug off this prospect.

They point to the advantages of industrializing grass: it would put crooked dealers out of business, furnish a better and cheaper product — and you could still grow your own.

Such touching faith in an economic system so many of us call corrupt is sorely misplaced. A more consistent approach indicates that pot after legalization would probably be mass-produced

(and eventually synthetic), of poorer quality, just as costly as it is now — and there'd be little room for competition, if the sales of cigarettes or autos are any guide.

It seems, appearances otherwise to the contrary, that many of us still believe the free enterprise system is free. Or, rather, we bemoan the evils of capitalism, only to forget them when it's grass — not cars or color TV's — that the marketplace promises to give us. Isn't it hypocritical to buy a chunk of the system only if the price is right?

And if pot's made legal, we'll have to silence that line we've given our parents for years: that objects are not liberating. If we're sickened by their materialism, their mass-produced needs, their resort to pills or the bottle, we can't say it's "different" when we want our things sanctioned.

In **The Pursuit of Loneliness**, Philip Slater remarks that drug users "may be enjoying the current more, but they are still plugged into the same machinery that drives other Americans on their weary and joyless round."

By expecting too much from marijuana, and too easily accepting its pleasurable effects, we may ultimately electrocute ourselves by plugging into our own version of the same old circuit.

Many present pot laws require "cruel and unusual punishment" and clearly must be softened. But legalizing grass could well give the American economy and its free enterprise mythology their biggest shot in the arm in years. And that **fix might fix us for good.**

Competition for grants opened

In May, 1972, the 1973-74 competition for grants for graduate study abroad offered by the U.S. Government under the Fulbright-Hays Act and by foreign donors was officially opened by the Institute of International Education. Now, only a few more weeks remain in which qualified graduate students may apply for one of the 590 awards which are available.

Full Grants, which provide round-trip transportation, tuition, and maintenance for one academic year, are

available to 29 countries. U.S. Government Travel Grants are offered to 11 countries and foreign donors provide awards to 14 countries.

Candidates must be U.S. citizens at the time of application, hold a bachelor's degree or its equivalent by the beginning date of the grant, have language ability commensurate with the demands of the proposed study, projects, and good health. Preference is given to applicants between 20 and 35 years of age.

Students earn lauds

Students from MSU earned recognition at the recent annual meeting of the student section of the American Agricultural Economics Association at the University of Gainesville in Florida.

In national debate competition, Charles Failing, a spring graduate from Miles City, and Leon Spaeth of Silesia, a senior, took second place.

Debating whether or not international agricultural policy should be based on comparative advantage, they placed behind first-place Purdue University and ahead

of third-place University of Illinois.

Convention participants elected Wayne Gillespie, an MSU senior from Kevin, as national president of the student section for 1972-73.

Gillespie also earned honors in national essay competition with a paper on a service confinement system for beef cows in northern Montana.

Club advisers are Drs. Gail Cramer, who served last year, and Steve Stauber, who will be adviser for the coming school year. Both are from the MSU Department of Agricultural Economics and Economics.

Van't Hul appointed

The Department of Civil Engineering and Engineering Mechanics at MSU has announced the appointment of Arthur W. Van't Hul to direct its graduate program in environmental health engineering.

Van't Hul comes from Lewiston, Ida., where he was regional public health engineer for 15 years with the Idaho Highway Department.

The Department of Civil Engineering and Engineering Mechanics at MSU has announced the appointment of Arthur W. Van't Hul to direct its graduate program in environmental health engineering.

Van't Hul comes from Lewiston, Ida., where he was regional public health engineer for 15 years with the Idaho Highway Department.

At MSU he will be

responsible for a new option — offered as a master of science in civil engineering — designed to develop applicants from engineering and related applied science fields in concepts of environmental health engineering.

Under the program, students will be trained to supervise such projects as water supply, sewage treatment and solid waste disposal. They will also receive thorough grounding in related regulatory laws, planning, municipal financing and public health aspects of disease control.

A licensed professional engineer, Van't Hul earned a bachelor of science degree from the University of Illinois and a master of science from Colorado State University.

Music department awards scholarships

The Department of Music at MSU has announced that 115 returning and new students have been awarded scholarships in music for the 1972-73 school year.

Creech Reynolds, music department head, said the scholarships — which range in amount from \$36 to \$750 — are awarded to outstanding musicians who are enrolled at MSU or have indicated they plan to attend.

Two-thirds of the recipients,

Reynolds noted, are majoring in fields other than music, but have continued their interest in music through individual study or participation in one or more of MSU's 14 musical organizations.

The awards total some \$10,000 in scholarships. They are funded through contributions from alumni and other friends of the university, as well as from fund-raising efforts of MSU music students.

Plastics vs. Ecology-minded

Reprinted From
Conservation News;
 September 1, 1972

Even the government has gotten a whiff of the problem. The Internal Revenue Service recently approved the use of polyvinyl chloride plastic liquor bottles to replace glass ones. When challenged by the Environmental Protection Agency, the IRS argued that PVC bottles would use fewer natural resources than glass bottles.

But EPA reportedly countered that the raw materials needed for glass — silica sand, soda, ash, and lime — are far more plentiful in nature than the petroleum needed for PVC. The IRS withdrew its approval for review, although it intends to return with a final decision by the end of 1972.

The burning of plastics has even been linked with the actual destruction of municipal incinerators. The hydrochloric acid produced during the burning corrodes metals, thus hastening the breakdown of municipal incinerators. The acid may also damage the skin and

upper respiratory system of humans.

Landfills have also proved to be a problem as plastic cans and bottles are tough to crush or compact due to their pliant nature.

A promising new plastic in bottle form with the unlikely name of Barex 210 is now being test-marketed by Pepsi-Cola. According to the manufacturer, Sohio's Vistron Corporation, Barex 210 offers the unique advantage of being able to burn to an ash "without giving off noxious or corrosive fumes." While the press build-up seen thusfar doesn't really explain why Barex 210 is so different from other plastics, it does indicate that Barex resin is first made up into a spaghetti-like material, dried, and then diced in BB-size pellets for molding into a bottle.

The company claims that the Barex 210 bottle has already passed many of the critical tests which would provide an environmentally-superior substitute for the ordinary plastic bottle. With the building pressure of the "ban the can" and "throttle the bottle" movements throughout the U.S., the U.S.

Food and Drug Administration has already given its approval for the plastic to be used for food and drug containers.

Evidence of our ever-increasing use of plastics is easily seen in every garbage dump in America. Americans throw away somewhere between 7.2 and 10.8 million tons of plastic garbage each year.

When it was introduced in the 40's and 50's, plastic was foreseen as the space-age wonder of the future, offering unlimited uses for the consumer and industry. Of all the projected uses though, none held more potential than as a replacement for the glass and metal container — cans, bottles, toothpaste tubes, etc.

The rising reliance on the new product even spawned an entirely new adjective — "plastic" became anything that was sterile, phony, or contrived.

The biggest drawback to the use of plastic bottles and cans has been waste disposal. Problems associated with the disposal of plastic have been immense and it is usually not conducive to recycling.

SKI

DISCOUNT

center

name brands at BIG savings



Jackets

Quality name brands
Great styles

MENS - LADIES
JUNIORS

40% Off

No seconds

POLES

Tapered Aluminum shafts
Slalomgrips - leather straps

BIG SAVINGS

at your Ski Discount center

list at
7.00

4²⁵

Boots

Mens - Ladies - Juniors

Regular
fit &

FOAM

40% Off

Warm-Ups

Full side - zip
Dacron - lined

40% Off

name brand
Quality products -
no seconds

HEAD

Head SKIS

360's the perfect
Recreational ski

list at
155.00

77⁵⁰

Ski Discount price

More Name Brand

SKIS 40% OFF



OPEN

Sept. 23

HOURS

MON. - FRI.: NOON TO 9 P.M.

SAT. : 10 A.M. TO 6 P.M.

SUN. : 10 A.M. TO 4 P.M.

Step-in

Bindings

S SALOMON S-404

heel & toe

dial-atenstion
adjustment

21⁹⁵

list at
36.00

your Ski
Discount price



DISCOUNT

center

WHERE?

SKID, INC.

2000 N. 7th

at O Bar J Trailer Sales

New degree offered at MSU

Draft to end

Computers — those versatile machines that could well have a greater impact on society than any other technological advance in the history of man — are providing the basis for an up-to-date degree program.

The degree, approved this summer by University System regents, is a bachelor of science in computer science.

Offered through the school's Department of Industrial Engineering and Computer Science, the four-year

MSU has had established coursework and faculty in computer science since 1968, he noted.

A valuable adjunct to the computer science program is ready access to the extensive facilities of the MSU Computing Center. The department has also received a \$20,000 grant from the National Science Foundation for additional equipment, most of which should be installed by early fall.

Credit for development of the program, Ritchey said,

and innovators rather than the technicians one associates with the term 'computer programming'."

Faulkner said the degree was designed with a generous selection of electives because "such a wide range of businesses and other operations can be involved with computers. A student in this field should have a fairly broad background."

The degree, though administered through the College of Engineering, is not, said Ritchey, an engineering

WASHINGTON, D.C. — Defense Secretary Laird's announcement in his August 28 press conference marks the near fulfillment of the Administration's efforts to end military conscription. Said Laird, "Every effort will be made to minimize draft calls, if not avoid them entirely, between January and July 1973, when the current induction authority expires."

Since 1968 draft calls have dropped 77 percent. Draft calls peaked in 1968 at 299,000; they were slightly less (289,900) in 1969. In 1970 the draft took 163,500 young men, and in 1971, 98,000. This year 50,000 men (the lowest since 1964) were scheduled to be drafted. For 1973 induction totals may be zero.

The draft wind-down is part of a four year effort to replace the draft with a volunteer army, an attempt based on the 1968 Nixon campaign pledge that if elected he would "work toward ending the military draft and establishing in its place an all volunteer armed force."

Immediately after the 1969 inauguration the President established the Gates Commission to study the draft, the feasibility of an all-volunteer army, and recommended transition measures.

While working to eliminate conscription, the Administration, through the Draft Reform Bill introduced to Congress in May 1969 and Executive Orders, modified the draft system. The local selection process was ended through the adoption of the draft lottery system. The seven year period of vulnerability to the draft, 19 to 26 years of age, was reduced to one.

When in November 1969 the order of call was reversed, so that the youngest men are now the first to be drafted.

The ending of student, occupational and paternal deferments last year curtailed favoritism towards any one group.

A nation-wide system of Youth Advisory Committees with a branch in each of 50 states was set up in June 1969 to advise draft age men of their rights under current draft laws. A national committee meets regularly with the Selective Service Director to discuss enlistment problems.

In their news conferences both the President and Laird stressed the need for the enactment of a series of bills to increase funding for military personnel. This would be provided by two measures currently pending in Congress: one piece of legislation permitting an enlistment bonus for the National Guard and the Reserves and another bill providing additional incentive pay for physicians. The Defense Secretary mentioned that monetary incentive programs have proved successful in Army and Marine Corps projects. These offer a \$1,500 enlistment bonus for men signing up for four year hitch in ground combat units. The army, continued Larid, which was having trouble getting volunteers for infantry, artillery and armored divisions signed up 5,400 men in June — about 400 more than average monthly needs.

To institute an all-volunteer force, the Administration has spent about \$1.9 billion on "transitional" costs — mainly in higher pay scales — and plans to spend about \$2.7 billion in fiscal year 1973.

As an incentive for volunteers military pay for enlistees has been increased from \$102.30 a month to \$288 a month, an 182 percent increase. Since 1964 the average annual pay of service men has doubled: from \$4700 to \$9500.

Over half the new defense budget is for personnel, both military and civilian. Between fiscal years 1964 and 1973, payroll and related costs have increased by \$20.8 billion, or nearly doubled during the past decade.



program encompasses elements of both science and engineering. Dr. John Ritchey, head of the department, said it gives the student "a broad base of mathematics, statistics and computer studies, with concentration in either systems programming, information systems management or technical computer applications."

Ritchey expects an influx of students at all levels, from freshmen to seniors. "Several students are near graduation," he said, "and have been waiting for official approval of the degree."

belongs to Dr. Louis Schmittroth, professor of computer science. Schmittroth headed the Computer Science Department before it merged with Industrial and Management Engineering earlier this year and has been involved since 1968 in planning for the degree.

Martin Faulkner, assistant professor of computer science, emphasized the difference between computer science and courses in computer programming. "Our students are well-versed in programming," he said, "but the degree is intended to provide leaders, managers

program. "It is housed in engineering primarily because it emphasizes application rather than theory.

"The person who holds this degree," he said, "will be a specialist in one of several areas of computer technology. He'll be qualified to go out and do a job for someone.

"The computer is one of man's most remarkable inventions, one that is important at all levels of government and industry. It deserves serious study. And society needs the sort of experts we hope to provide with this degree in computer science."

Classroom office to be built

Andy van Teylingen, MSU campus architect, sees no problems for sometime to come in classroom space.

The Classroom-Office Building, scheduled for completion in the summer of 1974, "will take care of our needs for the foreseeable future," according to the architect.

Van Teylingen said bids will be let in mid-November on the 84,751 sq. ft. structure. The two-story building will be constructed north of Hamilton Hall and south and west of Herrick Hall. The state is providing \$2.5 million, \$50,000 comes from a federal grant and \$400,000 from student fees.

When the building is

completed the mathematics, sociology, speech, history, government and philosophy, and English and theater arts departments will have new homes. The offices are now scattered around the campus.

In addition classes will no longer be conducted in Montana Hall.

The Classroom-Office Building will provide seats for 1,500 students at a time and have classrooms accommodating from 20 to 120 students.

"This building will loosen up the classroom situation on campus," van Teylingen said. "Here we have 8.7 sq. ft. of classroom space for each full time equivalent student. The

Classroom-Office Building will make it about 10 sq. ft., which is adequate.

"It will take us through our maximum enrollment peak predicted by the Board of Regents to be 8,700 in 1975."

Another help in relieving space problems is Leon Johnson Hall which should be complete by late in the fall quarter, according to van Teylingen. The building will have a classroom accommodating 279 and another for 100 open at the beginning of the quarter and the second floor laboratory should be in operation. The eight-story building will have only six of the floors completed because of lack of funds.

Theatre Arts to meet

Theatre Arts invites any interested students to attend a meeting Monday, September 25, at 7:30 pm in the SUB Theatre.

The purpose of the meeting will be to discuss the coming

theatre season and the possibilities for student participation in it. The Theatre Arts staff will be present to explain plans for the coming year and the opportunities for students in the Theatre Arts program.

1972 Bobcat football tickets: Staff and faculty may buy a \$14 season reserved ticket for \$11 or a general admission season ticket for \$6. MSU students with valid ID's may be a general admission season ticket for \$3. Single game admissions are \$4 reserved and \$2.50 general admission for staff and faculty, \$1 for MSU students with valid ID's.

A very limited distribution of complimentary tickets is available to distinguished guests, MSU athletic staff and spouses, and game administration workers.

All home Bobcat games will be played at the Bozeman Hawks field. First game, September 30.

Super Save

DRUG CENTER

Buttrey's Shopping Center
Bozeman, Montana

OPEN 7 DAYS A WEEK!

WEEKDAYS...9:00 AM to 10:00 PM
SUNDAYS...10:00 AM to 7:00 PM
SAVE 7 DAYS A WEEK AT
THE FRIENDLY STORE, Super Save!

Super Saving COUPON THIS COUPON WORTH **14¢**

KODAK COLOR FILM
CX 126-12, \$1.40 Value,
Everyday at Super Save 93¢
With This Coupon **79¢**

Expires Wed., Sept. 27, 1972
Super Save DRUG CENTER

Super Saving COUPON THIS COUPON WORTH **30¢**

BRECK SHAMPOO
\$2.15 Value,
Everyday at Super Save \$1.19
WITH THIS COUPON **89¢**

Expires Wed., Sept. 27, 1972
Super Save DRUG CENTERS

Super Saving COUPON THIS COUPON WORTH **24¢**

SYLVANIA FLASH CUBES
\$1.65 Value, Everyday
At Super Save 93¢
With This Coupon **69¢**

Expires Wed., Sept. 27, 1972
Super Save DRUG CENTER

Super Saving COUPON THIS COUPON WORTH **20¢**

BUFFERIN TABLETS
60's, \$1.23 Value,
Everyday at Super Save 89¢
With This Coupon **69¢**

Expires Wed., Sept. 27, 1972
Super Save DRUG CENTER

Super Saving COUPON THIS COUPON WORTH **85¢**

STEREO RECORDS
Bozeman's Largest Selection, \$5.98 Value,
Everyday at Super Save \$4.22
With This Coupon **3³⁷**

Expires Wed., Sept. 27, 1972
Super Save DRUG CENTER

Super Saving COUPON THIS COUPON WORTH **34¢**

BOX of 40 TAMPAX
\$1.93 Value, Everyday
At Super Save \$1.33
With This Coupon **99¢**

Expires Wed., Sept. 27, 1972
Super Save DRUG CENTER

Super Saving COUPON THIS COUPON WORTH **20¢**

STYLE HAIR SPRAY
98¢ Value, Everyday
At Super Save 59¢
With This Coupon ... **39¢**

Expires Wed., Sept. 27, 1972
Super Save DRUG CENTER

Super Saving COUPON THIS COUPON WORTH **52¢**

PANTY HOSE
Stretch - N - Fit
\$1.49 Value,
Everyday at Super Save 99¢
With This Coupon **47¢**

Expires Wed., Sept. 27, 1972
Super Save DRUG CENTER

Super Saving COUPON THIS COUPON WORTH **24¢**

HAVOLINE MOTOR OIL 3 Quarts
Streight Weight
At Super Save Regular 39¢ Quart
With This Coupon **93¢**

Expires Wed., Sept. 27, 1972
Super Save DRUG CENTER

Super Saving COUPON THIS COUPON WORTH **60¢**

8 TRACK TAPES
\$6.98 Value
Bozeman's Largest Selection
Everyday at Super Save \$4.99
With This Coupon **4³⁹**

Expires Wed., Sept. 27, 1972
Super Save DRUG CENTER

Super Saving COUPON THIS COUPON WORTH **26¢**

CLOSE-UP TOOTH PASTE
\$1.09 Value, Everyday
At Super Save 83¢
With This Coupon **57¢**

Expires Wed., Sept. 27, 1972
Super Save DRUG CENTER

Super Saving COUPON THIS COUPON WORTH **31¢**

RADIO BATTERIES
Everyday
At Super Save 98¢
With This Coupon **67¢**

Expires Wed., Sept. 27, 1972
Super Save DRUG CENTER

JUST **CLIP** AND

SAVE WITH THESE COUPONS!

Lair's 'baby' book-a popular sleeper-

When a privately printed book goes through seven printings in three years and sells several thousand copies with virtually no advertising or promotion, its author might justifiably claim to have produced a popular "sleeper."

MSU education professor Jess Lair makes no such claim, but New York publishers Doubleday and Co. would be less hesitant about boosting the book. They have just brought it out in a revised and expanded version.

The new edition is titled "I Ain't Much Baby, But I'm All I Got," the same name Lair gave the book he had privately printed in 1969, primarily to help students in his classes at MSU.

The book tells how Lair changed his approach to life after suffering a serious heart attack a decade ago. At that time he headed a successful firm of marketing consultants in Minneapolis. He said goodbye to the world of advertising and promotion and decided to turn to teaching. In the process he earned a master's degree and a Ph.D., in psychology, from the University of Minnesota.

Lair came to MSU in 1967, where he first taught English and courses in mass communications, then gradually shifted his instructional emphasis to education, particularly educational

psychology. Students rate his classes among the most popular at the university.

A chronicle of Lair's personal reactions to life, as well as those of his students, the book underscores his personal philosophy of teaching. As he puts it, "You can't be a teacher without also being a person who lives."

The volume is intended, Lair says, "to help people lead more fruitful lives." But he is no sunshine-spreading Pollyanna. The precept that life is tough is basic to both his book and his ideas about communicating with others as a teacher and a person.

Many human problems, he feels, stem from the fact that people fail to share their mutual experiences. "The person next to you may feel just as frustrated and isolated as you do, but you'll never know it unless he talks to you about it.

"It's hellish to have to be close to people," Lair acknowledges. "You see your own inadequacies. The more deeply I speak about myself to others, the more I can communicate with them."

When the first version of "I Ain't Much Baby, But I'm All I Got" came out, Lair began receiving requests for copies from all over the U.S. and abroad. The book has been used as a psychology and educational psychology text in some 20 colleges and univer-

sities, as well as for counseling in a number of centers treating alcoholism and drug addiction.

The title, which communicates something of Lair's outlook on life, has prompted people to ask him where it

came from.

"Actually," he recalls, "a group of students suggested it, from a phrase I was using a lot in my classes. I told them I thought it was too long. They said that didn't matter. I told them my wife didn't like it.

They said, 'So what?' So I used it."

The MSU professor feels the new book won't make any big changes in his life. "I'm already doing what I want to do," he says, "in the place I want to do it."

THE SKIERS CHOICE!

FOR:

- ★ HEAD
- ★ DYNASTAR
- ★ SCOTT
- ★ A & T
- ★ SALOMON
- ★ HENKE
- ★ HUMANIC
- ★ SIERRA DESIGN
- ★ CROSS COUNTRY & TOURING
- ★ FISCHER
- ★ HANSON
- ★ GERRY
- ★ ASPEN
- ★ SWING WEST
- ★ RIEKER
- ★ ALPINE DESIGN
- ★ KASTINGER

THE FINEST

SALES : SERVICE : RENTAL

1508 W. MAIN

CHARGE IT!

we honor master charge THE INTERBANK CARD

your BANKAMERICARD welcome here

The Roundhouse Ski & Sport center

FOR KGLT

New d.j.'s needed

Nancy Landgren, the new general manager of the campus radio station KGLT, has a problem — she needs more announcers.

"We're going to need a lot of people this year, especially d.j.'s for the morning shows," she said.

To help correct this problem, she will soon call a general meeting for those students interested on working on either KGLT or KATS. These students will work as apprentices with regular disc jockeys until they become proficient enough to handle a shift of their own.

However, Landgren noted that announcers on KGLT, because of Federal Communications Commission rules, must obtain a license to broadcast. No such stipulation exists for the platterspinners at KATS.

KGLT, on 90.1 fm, has been designated by the FCC as a non-commercial educational station. It receives taped broadcasts from the Pacifica network, the Canadian Broadcasting Corporation, and the US government. Landgren stated that KGLT had approximately 40 d.j.'s last year, but lost about a dozen through graduation or dropping out.

Main attractions on KGLT are Pacifica network interviews and discussions. For example, last year's presentations included discussions on prison reforms, women's lib, and drugs in modern society. Interviewees ranged from radicals Saul Alinsky and Huey Newton to

that former hero of the silver screen, Roy Rogers.

Also, 9 o'clock Wednesday, which discusses issues relevant to MSU, has a large following. Listeners who want to express themselves may call up during the show and ask the panel questions. Barry White and Kayle Jackson are scheduled as program moderators this fall.

During the day, KGLT announcers can play any kind of music they want. At night, an alternating system of music begins. One night of the week may be devoted entirely to rock, while the next night might single out classical music, to be followed the night after by country western or blues.

KATS, at 590 am, "is a looser type of station," the new general manager said. A carrier-current station, it is brought into the dorms on a phone line, and is not supposed to go any farther than the dorms.

However, it can often be picked up at other places on campus. Last season's crop of KATS announcers numbered about 20, but their ranks too have been thinned. Shelby Kuenning and Tom Baffuto will be directing KATS operations.

"Students can begin working at the radio station any time they feel like it, although once they take an assignment to do a show, they have to do it the whole quarter," said Landgren.

Both stations are located in the SUB basement. For information, call 994-3001.

Mont PIRG to aid consumers through united student action

Students who feel they have little voice as a citizen and consumer may be pleased to find a student-oriented protection agency working for them when classes begin this fall.

The organization, the Montana Public Interest Research Group, or MontPIRG, has initiated chapters on three campuses of the Montana University system, and plans to begin operation with the opening of the fall term.

MontPIRG will be student funded and student directed,

according to Ken Anderson, a junior in mechanical engineering at Montana State University.

"Primarily a research and information agency," he said, "MontPIRG hopes to represent student interests that have largely been ignored by corporate and civil authorities."

To do so, voluntary fees collected from students on the Bozeman, Billings and Missoula campuses — totalling as much as \$45,000 in a year's time — will be used to

hire a professional staff to coordinate student activities.

The state MontPIRG director, according to Anderson, will be a lawyer. He said MontPIRG members are currently examining credentials of prospective candidates.

MontPIRG will work in four areas, Anderson noted. They are: the legislature, the courts, governmental agencies, and the communications media.

For the student, he said, MontPIRG would offer representation in the areas of environmental quality, consumer protection and "human rights," the latter including racial and sexual discrimination, housing and educational quality.

"In addition," Anderson noted, "MontPIRG will attempt to balance Montana's powerful corporate influences with strict attention to company policy on human and

physical ecology, occupation health and safety standards and honesty in corporate taxation."

The idea for a public interest group came from Don Ross, co-author of **Action For a Change**, and a member of Ralph Nader's Raiders.

The University of Montana and Montana State University began work last fall on the project; Eastern Montana College began independently but soon joined the larger universities.

Anderson said 26 other states are currently in the process of forming PIRG's.

In Montana, over 50 per cent of the students in each school signed petitions last winter or spring stating that they would be willing to pay \$3 a year for MontPIRG on an optional basis.

A proposal for uniform collection of funds was to have been presented to the Board of Regents earlier this summer, but was discouraged by

university officials as student funding for a potentially political organization.

EMC students are supporting MontPIRG out of student activity fees, MSU students may be able to voluntarily add a \$1 fee to registration costs, and UM students are without a method of supporting MontPIRG currently.

Although endorsements for MontPIRG have come from a wide range of Montana personalities — including Democratic gubernatorial candidate Tom Judge — students working on the agency are anxiously awaiting the return to classes.

"Student reaction to MontPIRG," said Anderson, "has generally been that it is a fantastic idea, but apprehensive about its workability."

"What we are wondering about," he said, "is their reaction when we ask for their money."

MSU

Welcome Students



We

have so many

shoe styles for

men and women

You have one stop

shopping

Egbert's
SHOES

Downtown In Beautiful Bozeman



Here we see one of MSU's finest, solving one of the biggest problems we had last week, the traffic.

Photo by Freivalds

Light my fire!

By the U.S. Forest Service

MISSOULA — Fire. Friend or enemy? The answer is both," sometimes even when the fire happens to be a forest fire. For example, an uncontrolled wildfire is an enemy; but a "prescribed" or "harnessed" burn can be beneficial and even necessary in forest management.

So, in effect, says Dr. J. Alfred Hall in "Forest Fuels, Prescribed Fire, and Air Quality," a new publication of the Pacific Northwest Forest and Range Experiment Station of the USDA Forest Service. Hall, who is consultant for the Station, is also retired Director of the Forest Products Laboratory at Madison, Wisconsin.

In his publication, Hall

provides an authoritative evaluation of the significance of wood smoke in the present-day environment in the belief that such information will be of value to foresters, air quality officials, health protection agencies, and the informed public.

Since before the dawn of mankind, there have been forest fires. The havoc that an uncontrolled fire can cause has been demonstrated amply by some of our present-day conflagrations.

And yet, some benefits come out of some forest-fires, Hall reminds us.

For instance, foresters have learned to "prescribe" and control fire as a management tool for many purposes — to establish favorable seedbeds,

to remove competing underbrush, to speed up nutrient cycling, to control tree pests, to establish desirable animal browse, to incinerate debris after harvest and thinning operations, and many others. But smoke is a natural result of this.

So how best to minimize the effects of smoke on the environment as a whole? It is in this context that the author presents the known information on the physical and chemical properties of smoke resulting from burning for forest fuels.

For a copy of this publication, write to Information Services, USDA Forest Service, Federal Building, Missoula, Montana

59601

'Men must be with us', urges Friedan

In a major critical reappraisal of the women's movement released in August McCall's, Betty Friedan takes issue with some of the ideas and leaders currently associated with women's liberation.

(In a statement made on the eve of the article's publication Ms. Friedan, author of *The Feminine Mystique* and widely regarded as the founder of the contemporary women's movement said, "I wrote this article only after months of deliberation and fully realize what I have said will cause some dismay, especially among those members of the Movement newly conscious of the need to fight for equality for women.

But there are deep ideological differences among us which we cannot afford to obscure in the name of a unified Sisterhood. There is not a single voice, but many voices in the Movement. Unless we openly seek the truth, we risk allowing the Movement to be misused, ripped-off and perverted in ways that could wound it beyond recovery.")

Insisting that "Men can and must be with us if we are to change society," the principal founder and first president of

A. L. Strand, fifth president of MSU, from 1937 to 1942, was the first alumnus to hold the office.

the National Organization for Women criticizes both Gloria Steinem, editor of *MS. magazine* and Representative Bella Abzug for encouraging what she calls "female chauvinism," in the *McCall's* article.

"When Gloria Steinem dismisses marriage as 'prostitution'... the assumption is that no woman would ever want to go to bed with a man if she didn't need to sell her body for bread or a mink coat... A female chauvinism that makes a woman apologize for loving her husband or children denies the real feelings of too many women," she says, adding that she disagrees with Ms. Steinem's view that a conspiracy to preserve "the economic and social profit of men as a group," prevents women from achieving equality.

Referring to Ms. Abzug's losing Democratic Primary race against William Fitz Ryan in New York's 20th Congressional Record, she says, "Only a female chauvinist would say that no matter how good a man's record — on peace, on women — women must support a female opponent just because she is a woman.

"That would invite me to vote against women simply because they are women... Liberal male journalists and other men who had previously supported both women's liberation and Bella Abzug,

react with outrage.

"If I were a man, I would object strenuously to the assumption that women have any moral or spiritual superiority as a class. This is male chauvinism in reverse... and those who preach or practice it seem to me to be corrupting our movement... and inviting a backlash that endangers the very real gains we have won.

"As a woman I object to female chauvinism — not only because it is dangerous, but because it is wrong... it is wrong to elevate women as a class by yet another sexual definition... (which) denies us our human identity... which is what this movement is all about, and all it is about.

"If we make men the enemy they will surely lash back at us... If we demand equal treatment from them and still insist on special privilege... we deserve the backlash."

Recalling that, "I have always objected to a rhetoric that treats the women's movement as class warfare against men," Ms. Friedan says that the movement has had enough of "sexual politics" and admonishes women to "leave behind as dinosaurs, or isolate as lethal freaks male chauvinist pigs and female chauvinist boors alike."

Calling the real goals of the women's movement "too important and precarious to jeopardize now," Ms. Friedan strongly recommends that

women get on with the job of securing "equal pay, equal opportunity for good jobs, and the training for them, our own voice in decisions of church and state, an end to practices that discriminate against us or put us down, and the

restructuring of work, home, marriage and child rearing.

"I believe my first responsibility is simply human, just as a man's is... In this new human politics, female chauvinism is as obsolete as the Playboy Bunny."

Lawyer protects students

HOUSTON, Tex. (I.P.) — Legal counselor Larry Wayne, aside from practicing law, is plugging away for the rights of 24,000 students enrolled at his alma mater, the University of Houston.

He spends up to 20 hours a week helping UH students handle traffic tickets, apartment, employer and family problems and face an occasional criminal charge without actually representing them in court.

One problem Wayne frequently must deal with is common law marriage. "Some couples come in here not even realizing they are married," he says. Under common law, Wayne said, a man and a woman need only to introduce themselves as husband and wife, or even open a joint charge account as such to be considered married.

"Students intend to be married under common law, and

then expect to be able to dissolve their relationship in the same manner it was formed," he said. "They don't realize that a common law marriage requires the same formality of divorce proceedings that is required for a ceremonial marriage."

UH's dean of students established Wayne's office last year in an effort to offer students a wider range of services. Since then, Wayne has counseled in excess of 700 students on legal matters.

Wayne solves most of the problems via appointments in his office which last 30 minutes or so. About five percent are serious enough to require an attorney, he says.

Current projects for Wayne's office: publishing a "Tenant-Landlord Law" pamphlet and organizing legal symposia by which legislators, judges and other law officials would "bring law to the student."

SUBARU Trade-ins:

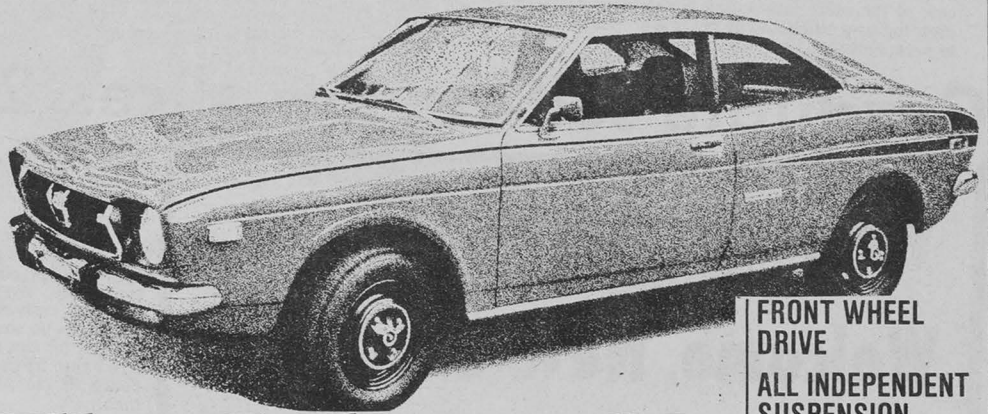
- 1962 Mercedes-Bens (2)
- 1962 Volvo (2)
- 1964 VW Bug
- 1966 VW Bug
- 1968 VW Bug
- 1969 VW Bug (3)
- 1970 VW Bug
- 1968 VW Camper
- 1968 Ford Certina
- 1968 Caveman Camper
- 1968 GTO (sharp)
- 1969 Datsun 2000

the SUBARU:

The Subaru comes as 2 door, 4 door, 4 door Wagon and GL Coupe. It is the ideal car for the owner who looks for economy, comfort, quietness and highway stability. Its front wheel drive will enable you to reach any ski area without effort (or snow tires) and after a snow storm get back out too. In highway stability and economy the Subaru can't be touched by any small car in its class. In our opinion it holds its own with the older models of Peugeot, Volvo and Saabs.

And by the way, we repair old Peugeots, Volvos and VW's.

See you!



The Subaru GL Coupe \$2499*

TEST DRIVE IT. NOW.

Free maintenance service for 12,000 miles or one year

the metric shop

1022 No. 7th

One of 11 Dealers in Montana

The car for people who know all about imported cars.
The car for people who never considered an import.

FRONT WHEEL DRIVE

ALL INDEPENDENT SUSPENSION

STANDARD:

- AM Radio
- Electric Clock
- Electronic Tachometer
- Reclining High-Back Bucket Seats
- Console and Cigarette Lighter
- Four Speed, All-Synchro Transmission
- Front Disc Brakes
- Wall-to-Wall Carpeting
- Styled Wheel Covers
- Radial Tires
- Electric Rear Window Defogger
- Deluxe Vinyl Upholstery
- Custom Exterior Striping

* POE Dealer preparation, handling, freight, and state or local taxes, if any, extra.

Proposed U.S. cities deemed a necessity

By Dr. Verne House

Extension Public Affairs Economist

Population growth rate is currently in a downtrend and is at the lowest point it has been since records were kept. This is not news to students of population. Some would suggest that this evidence proves that we need not be concerned about population and that advocates of zero population growth are merely alarmists who have not studied the facts. What are these facts?

In recent years our population recently crossed the 200 million level. Our population density is low compared to many other countries.

Let us suppose that our population growth rate did, in fact, drop to zero. This does not mean that our population would stabilize at its present level. Conrad Tauber, Associate Director of the Bureau of Census, estimates that with a zero population growth rate we might reach stability by the year 2037 with a population of 276 million. This would seem to be a minimum projection because we are currently growing faster than this.

Problems of Population Growth

Regardless of the growth rate it is apparent that our rapid increase in population will result in a much larger population over all. There are some obvious effects to be expected from this rapid rate of change. First, we will need more places for people to live. Second, unless we have massive and effective redistribution of income we will need the economic growth to provide jobs for the additional people. Third, the additional economic growth will result in further degradation of environmental quality and will require a more organized economy that we presently have (if you can imagine that).

We have not done very much to recognize and cope with these problems. Several recommendations have been made. One of the more interesting is the idea of creating new cities. Let us put this proposal in perspective.

New Cities

In 1969 the National Committee on Urban Growth Policy proposed that the Federal government take an active role in planning new cities. This committee suggested that in the next 30 years the United States should create 100 cities of 100,000 people each and 10 cities of 1,000,000 people each.

If we were to carry out such a program, this would provide for about 20 million of the total expected growth, leaving 40 million to be added to the existing metropolitan areas. The metropolitan areas already have their troubles, many of which can be attributed to growth pains.

If we were to avoid increasing the present size of the metropolitan areas, we would need to develop another two cities of 75,000 people every month between now and the year 2000. These numbers suggest a problem which commands attention. What are we doing about it? Those past efforts in public housing and urban renewal have not been conspicuous successes.

A new overture was made in 1971 when the Federal government launched a program for the development of new towns.

The first appearance of new community legislation was made in the last days of the Lyndon Johnson Administration. The most recent act passed at the end of 1970, established an organizational apparatus for the idea and authorized broad credit, loan guarantees and grant assistance to qualified developers of new communities. Thus far Congress has not appropriated land and grant funds for this part of the program, but the loan guarantee program is well underway, with over 100 million dollars in guarantees approved by the end of 1971.

The U.S. new communities policy takes its inspiration from the post-war British experience in planning and building new towns. A ring of new towns around London was conceived as a means of controlling the cities growth. By now the United Kingdom can point to 15 new towns designed to accommodate more than a million people

and a dozen more under development that will absorb more than another 1 and 3/4 million. British new town policy has been modified over the past 25 years but it is generally judged a success, according to a recent report by a prestigious foundation, Resources for the Future.

U.S. policy is quite different in that the American new town typically is a private large scale development scheme aimed at making a profit. But the justification for public policy in this field is not to enhance the profitability of the enterprises but rather to insure that public interests are realized in the course of development.

In the United States new communities are largely a metropolitan phenomenon; they seem to depend on established labor markets and strongly structured regional economies. We have long recognized that the flow of people from rural to urban areas in the United States occurred because the labor market is stronger in the urban areas. A number of attempts have been tried in recent years to lessen this flow of people.

We have passed laws encouraging rural economic development but they do not seem to have been powerful enough to overcome the rapid rate of substitution of capital goods, such as machinery, for labor in the agricultural industry. This substitution of capital for labor has, of course, been encouraged by government policy.

The point is that it will take considerable effort to create enough new employment in rural areas to bring about some desirable redistribution of the population. New rural development legislation is progressing through the Congress. The Rural Development Act of 1972 recently emerged from the House-Senate Conference Committee so that we can expect it to be voted on in the near future.

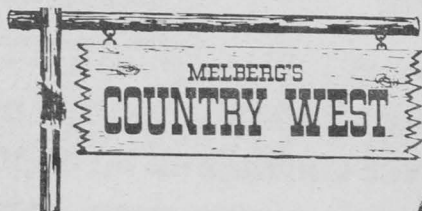
In its present form the Rural Development Act bill will encourage rural business including the agricultural business and provide special assistance to small farm units. Whether this effort will absorb enough labor to stem the flow of people to existing cities remains to be seen.

Graduate self-review slices 20 programs

Welcome Back Welcome New Students

For the best in ranch and Western wear —

Come to the sign of the
revolving horse where
the action is!!



President Carl W. McIntosh, acting on the findings of a faculty group which has conducted a comprehensive review of graduate degree programs at the institution, has recommended to State University System regents that 20 advanced degree programs be suspended.

Basis for the recommendation came from the executive board of the MSU graduate faculty.

Describing the move as "significant pruning," Dr. McIntosh said streamlining of the graduate program will enable MSU "to consolidate and utilize its resources to strengthen ongoing degree programs at both the graduate and undergraduate level."

The recommendation will terminate MSU's master of science degree in applied science degree, which was closed to admissions in the spring of 1971, pending the graduate board review. Over a period of 40 years, the degree had been awarded to students in 36 separate academic areas.

"By eliminating this degree," said McIntosh, "we are acknowledging the excellence of other existing programs in a wide range of disciplines. It was the finding of the graduate board that this 'catch-all' type of graduate program should be terminated."

Elimination of the master of science in applied science

degree, which has been approved by the MSU Budget Committee, means that students currently enrolled in the program will have six quarters — not to extend beyond September of 1975 — to complete their degrees.

Also suspended are the Ph.D. in education, which has been offered in addition to the doctor of education degree (which will be retained), and the master of science in education.

McIntosh noted that the master of education degree and the master of science in physical education, as well as the master of education in physical education, will be retained "as appropriate programs in these fields."

Said the MSU president: "We've taken a good, hard look at our graduate degree offerings. The economy resulting from this action will be largely in the prevention of further escalation of costs, since the addition of resources to these programs would have been necessary to maintain them at a quality level consistent with the standards of the university."

"I see this move as a contribution to the quality of MSU's graduate and undergraduate programs. It also represents an updating of our academic offerings. Whatever unresolved problems remain, full consideration will be given to the needs of our students and the state."

Now You Can Ride The Escalators To The New Second Level "WORLD OF FASHION"

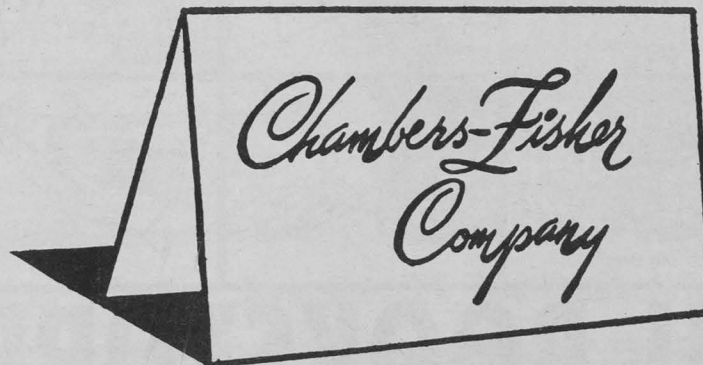
And Also The Escalators Will Carry You To
Chamber's Lower Level



THE
BEST
DRESSED
GIRLS
CARRY
PACKAGES
FROM
CHAMBERS

All of us at Chambers Welcome the MSU
Students and Faculty to view our newly
expanded and modernized facilities.

Protected
Parking



Convenient
Credit

In The Heart of the BIG MAIN SHOPPING CENTER
Downtown Bozeman



CHEERS FOR THE YEAR: An eight-member cheerleading squad will stimulate spirits at Montana State University football and basketball contests this school year. Practicing a formation above are six of them, from left: Janine Leeds, Havre; Jan Smith, Laurel; Walt Backer, Great Falls, Blinda Swenson, Sidney; Mary McRae, Lewistown; and, in front, Gwen Jones, Belgrade. Not pictured are Jim Miller, Polson, and Dick Armstrong, Kalispell. Miss Swenson is cheer queen for the group. (MSU photo)

Museum opens soon

The Museum of the Rockies, a popular place for both members of the community and visitors, will open Oct. 18 in new quarters on the MSU campus.

At present the museum is closed for a month while the move is being made to the new site on the corner of South 7th Avenue and Kagy Boulevard.

The former dairy barn that served as the museum's home for several years is scheduled for demolition. It dates back to 1903. That location, at 11th Avenue and Arthur, will become part of the site for the MSU Creative Arts Complex now under construction.

A two-level, 12,800 sq. ft. building will be the new location for the museum. It is the first part of a complex which will eventually have eight modules connected by corridors.

Each building will be devoted to displays interpreting the physical and social aspects of the Northern Rocky Mountain area.

The museum concentrates exhibits on the physical setting through displays in the earth sciences, paleontology and natural history. The social setting is depicted through archeology and anthropology, pioneers and settlers, and technologies.

The Museum of the Rockies, founded in 1957, is, according to Dr. Drew, one of the few museums in the country built by the community and maintained by a university.

It was financed by donations but is a part of the university as far as maintenance and operation funds go, according to Dr. Drew.

He sees the museum as "something used by university students and the general public."

As museum employees carefully move the large collection of displays into the first module, construction is scheduled to begin on the second building, due for completion in a year.

The first floor of the new quarters will be used for exhibits, and working offices and shops will be housed in the basement.

When the museum re-opens several new exhibits will be unveiled. Scheduled is a traveling Indian art show.

Dr. Drew noted the museum's policy is keeping articles in the open where people can get a close look and also giving access to the work areas.

Museum hours are 8 a.m. to 9 p.m. weekdays and 1 to 5 p.m. weekends.

HOWDY

On behalf of the Board of Directors, Management and Staff, your MSU BOOKSTORE, INC. Welcomes all new and returning students and faculty. We wish you success in the coming year and look forward to serving your academic needs.

Back-to-School! NEEDS

<p>Pens and Pencils</p>	<p>Filler Paper</p>	<p>Notebooks</p>	<p>Needed Supplies</p>	<p>Dissecting Sets</p>
<p>Art Supplies</p>	<p>Desk Lamps</p>	<p>Slide Rules</p>	<p>Drafting Equipment and Supplies</p>	<p>Brief Cases</p>



MSU BOOKSTORE INC.

- Student and Faculty owned since 1931 -

WELCOME

Faculty and Students

MONTANA STATE UNIVERSITY

"Home of the Fighting Bobcats"



**2121 WEST MAIN STREET
BOZEMAN, MONTANA**

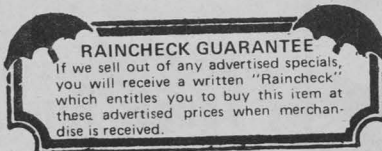
STORE HOURS: 9 TO 9 WEEKDAYS 10-6 SUNDAYS

Montana's Only True Discount Store

- * School Supplies
- * Sporting Goods
- * Records
- * Health and Beauty Aids
- * Gift Items
- * Automotive Supplies
- * Men's, Women's and Children's Clothing

**Nationally Advertised
Brands**

**ALL MERCHANDISE
IS GUARANTEED**



Prices Effective September 22 thru October 1, 1972



"WHERE YOU ALWAYS BUY THE BEST FOR LESS"

GIBSON'S

DISCOUNT CENTER



MEN'S

100% Nylon

Snorkel Coats

\$25.00 Retail

ONLY

19⁸⁸

Sizes for ladies too!

LADIES'

Checkmate Jeans

25 STYLES

* FLARES * LOWRISE

Retails to \$17.00

ONLY

5⁸⁸

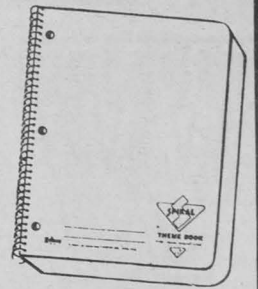


Theme Book

WIDE OR NARROW RULE

98c Value

43¢



VALUABLE COUPON

Oil Change

Includes LEE OIL FILTER of any size, plus 5 Quarts Oil your choice straight or double weight

\$4.50 Everyday Price Value

With this coupon

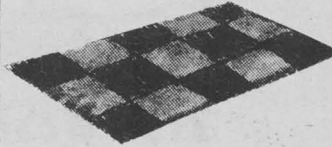
2⁹⁹

Good only at GIBSON'S

Coupon Good thru Oct. 1

Scatter Rugs

24x36" Checker
Luxury High Pile



3⁵⁹

Bedspreads

Full & Twin Size

Quilted

Values to \$18.00



8⁸⁸

Men's Famous Brand

PANTS

Assorted Styles
All Flares
Retails to \$14.00

4⁸⁸



Blankets

72x90"

Gold Only

\$5.00 Value



2⁴⁴

Infant Stroller

No. 203

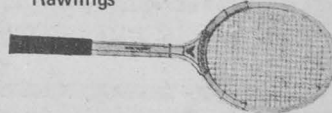
\$25.00 Retail

6 only - No rainchecks



15⁸⁸

Rawlings



Tennis Racket

John Newcombe Brand
\$11.99 Everyday

NOW

7⁸⁸

60

ST

39c ON

Ty

STP



With

Good

Nylon

Mini-Ruck

\$2.89 Everyday

1⁵⁹

Official Intercollegiate



Ten

Can of

99¢

6x9"
BOOKS
19¢



Legal Pads
 8½x11" or 8½x14"
 Your Choice
29¢



Bic Pens
 Medium Point Assorted Colors
 19¢ Value



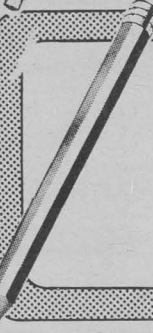
9¢

Values to 99¢
Clipboards
 Your Choice
44¢

SUPERSTIK
 GLUE STICK by PAPER MATE.
 59¢ Value
49¢



No. 2 Lead
Pencils
 Finest Quality
 5¢ Value



1¢
 Each

Paper Tablet
 typing paper
 25¢



FLAIR!
Markers
 by Papermate
 49¢ Value
29¢



300 Ct.
Filler Paper
 69¢ Value



37¢

VALUABLE COUPON
Treatment
 60 Value with this coupon
 89¢ with coupon
57¢

Erasers
 Assorted
9¢
 Pencil or Ink




Utility Rack
 for kitchen or bathroom
 89¢ Everyday
 NOW **57¢**



Football
 \$2.99 Everyday
1.99



VALUABLE COUPON
Zerex Anti-Freeze
 With this coupon
 Without Coupon \$1.69
 Good only at GIBSON'S
1.49 Gallon
 Coupon Good thru Oct. 1



Portable Electric Heater
 1350 Watts
 Automatic Thermostat
 Fan Forced Air
 \$21.99 Everyday
 NOW **14.88**



Hunter 33343

Balls
 \$8.99 Everyday
5.99



Rawlings Red, White & Blue
Baseball Gloves
 \$8.99 Everyday
 NOW **5.99**



VALUABLE COUPON
Rally Cream Wax
 10 oz.
 With this Coupon
 Without this coupon \$1.39
 Good only at GIBSON'S
79¢
 Coupon Good thru Oct. 1





CLIP 'N' SAVE SALE

COUPON

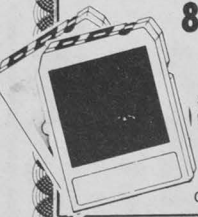
8 Track Tapes

\$6.98 List Price
With Coupon

4⁸⁸

Good Only at GIBSON'S

Coupon Good Thru Oct. 1



COUPON

Stereo LP's

\$5.98 List Price

With Coupon

3⁶⁶

Without Coupon \$4.27
Good Only at GIBSON'S

Coupon Good Thru Oct. 1

COUPON

Film with Processing

CX 126-20 Prints or
CX 135-20 Prints

With Coupon

3⁹⁹

Good Only at GIBSON'S

Coupon Good Thru Oct. 1

COUPON

Plastic Travel Boxes

For Soap or Toothbrushes

With Coupon

13[¢]

Without
Coupon 23c

Good Only at GIBSON'S

Coupon Good Thru Oct. 1



COUPON

Cassette Player/Recorder

With Coupon

Without Coupon \$29.99

19⁹⁹

Good Only at GIBSON'S

Coupon Good Thru Oct. 1



COUPON

AM/FM Portable Radio

Westinghouse
Model 5035
With Coupon

9⁸⁸

Without Coupon \$15.99
Good Only at GIBSON'S

Coupon Good Thru Oct. 1



COUPON

Bath Bowl Brush

With Coupon

19[¢]

Without Coupon 39c

Good Only at GIBSON'S

Coupon Good Thru Oct. 1



COUPON

IRONING BOARD

Pad & Cover Set

With Coupon

47[¢]

Without
Coupon 69c

Good Only at GIBSON'S

Coupon Good Thru Oct. 1



COUPON

Ironing Boards

3⁸⁸

With Coupon
Without Coupon \$4.99
Good Only at GIBSON'S

Coupon Good Thru Oct. 1



COUPON

Style Hair Spray

13 oz. Size
With Coupon

39[¢]

Without Coupon 57c

Good only at GIBSON'S

Coupon Good Thru Oct. 1



COUPON

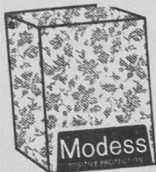
Modess 40's

Regular or Super
With
This
Coupon

99[¢]

Without Coupon \$1.49
Good Only at GIBSON'S

Coupon Good Thru Oct. 1



COUPON

Royal Trend

Quart
Size
With
This
Coupon

47[¢]

Without Coupon 89c
Good Only at GIBSON'S

Coupon Good Thru Oct. 1



COUPON

Scope

24 oz. Super Size

With
Coupon

97[¢]

Without Coupon \$1.35
Good Only at GIBSON'S

Coupon Good Thru Oct. 1



COUPON

Ultra brite Toothpaste

1.75 oz.

With Coupon

13[¢]

Without Coupon 27c

Good only at GIBSON'S

Coupon Good Thru Oct. 1



COUPON

Coronet Bath Tissue

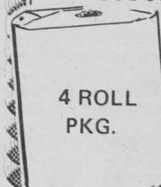
With Coupon

34[¢]

Without
Coupon 49c

Good Only At GIBSON'S

Coupon Good Thru Oct. 1



COUPON

100's Bayer Aspirin

With
This
Coupon

59[¢]

Without Coupon 79c

Good Only At GIBSON'S

Coupon Good Thru Oct. 1



COUPON

Cheer

KING
SIZE

With
Coupon

1²⁹

Without Coupon \$1.47
Good Only at GIBSON'S

Coupon Good Thru Oct. 1



COUPON

5 Qt. Purex

With Coupon

53[¢]

Without Coupon 73c
Good Only at GIBSON'S

Coupon Good Thru Oct. 1



British student raps on school

He's tired of Robin Hood jokes, but Derek H. Davis, a business manager from Nottingham University in England, took the ribbing in good humor during his three-day visit to MSU in August.

Davis is traveling across North America on a Winston Churchill Memorial Trust fellowship, visiting college and university business

managers in Canada and the United States to examine college financial systems.

In return for the sponsorship of his seven week trip, Davis will file a report on his finding with the Churchill Trust and other organizations.

He chose to visit MSU because of similarities between the University of Nottingham and the Bozeman

school. Both have departments of engineering and agriculture, and the British school's 5,500 student population is expected to match MSU's 8,000 within a few years.

In addition to his MSU visit, Davis will see 11 other American universities, including Harvard, Massachusetts Institute of Technology, the Universities of Arizona and Washington, and two Canadian schools, the Universities of Alberta and Manitoba.

On completion of his trip, Davis will be awarded the Winston Churchill medallion.

Despite the apparent similarities between the University of Nottingham and schools such as MSU, Davis pointed out that a number of differences exist.

Out of the 5,500 students attending Nottingham, only two per cent come from the immediate community.

"Students want to go away to a university," he said. English students, Davis explained, tend to pick colleges more on their academic value than proximity to home.

In Great Britain applying to a university differs markedly from American practice. The state-owned colleges have a

central clearing board — the UCCA — which handles all applications for higher education.

The student may apply to five colleges through UCCA, but can be provisionally accepted by only two. At the end of the Sixth Form — the British equivalent of the senior year in high school — the student takes A level comprehensive tests.

The A level tests either qualify or disqualify him for the colleges that have already provisionally accepted him.

Students unable to qualify for either college are recycled through UCCA again, and a position in a less demanding college may be found for them.

Financial aid to English students is guaranteed. The county in which the student's parents live pays for the student's tuition, student union fee and an annual grant.

Each student is entitled to the subsistence grant, worth up to approximately \$1200 a year, depending on his parents' financial capabilities.

On the other hand, student work-study jobs are practically non-existent in Great Britain. Davis said students do not have time to work and go to college at the same time.

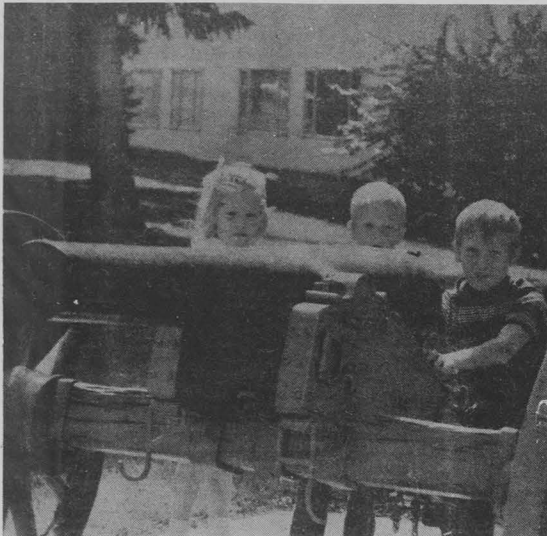
Tight academic standards mean that English universities have selective admission, Davis noted, while American schools have selective retention. Less than 10 per cent of the English students drop out, although their American counterparts do so at a rate approaching 50 per cent.

Nevertheless, the rigid academic standards still allow more than half the students completing the Sixth Form to go on to some sort of higher education, i.e. polytechnics, teacher training colleges or the university.

British students are required to specialize in their field of studies long before the American student. From the age of 11 years, Davis said, a child is channelled into a "field of endeavor." By the end of the Sixth Form he has a pretty good idea of what he will become.

American students often do not pick a major until the end of their first year of college, sometimes even later.

The trip by Davis seems to be fulfilling the hopes of the Winston Churchill Memorial Trust, which was set up to "give men and women from all walks of life a chance to increase their knowledge by traveling abroad."



Will the NRA help us keep it?

Photo by Freivalds

Reed awarded grant

The National Institute of Health is awarding an MSU professor, Dr. Norman Reed, an important Research Career Development grant.

The award will allow Reed, an associate professor of microbiology, to devote full time to research on immunology of the thymus gland. Immunology is the branch of medicine dealing with immunity from disease.

The Career Development awards are given to a limited number of promising young scientists to allow them to continue valuable research.

Under the grant, the Public Health Service will pay the full salary of Reed, not only allowing MSU to use his former salary elsewhere, but freeing Reed's time from administrative and most teaching duties.

"I'm very happy to get the grant," said Reed. "The reason is that immunology is in its prime. It has become a science in the past ten years.

"The consequences," he went on, "are far reaching, and will include such areas as organ transplantation, immunities to disease, and blood transfusions.

"Now I have a chance to do fundamental work of much practical consequence," he said.

Only one other MSU faculty member, Dr. Gary Strobel, a professor of plant pathology, has been awarded such a grant.

The grant is renewable over a five year period if Reed's

research continues to be fruitful.

He will work on the reaction of thymusless mice to a series of drugs. By noting the difference between the reactions of normal and the thymusless mice, Reed may be able to identify the function of the thymus in immunological reactions.

In addition, he will transfer human tumors to the special mice, then treat them with anti-tumor drugs that have not been approved for human use. Because they do not have a thymus, the mice do not reject the foreign tissue of the tumor.

"We're now to the point where we can talk about the physiology — or anatomy and functions — of the thymus," Reed reported.

Reed will be joined in his research by Dr. John Jutila of the MSU microbiology department, and three graduate students, Dave Aden, Judith Manning, and Dale Isaak.

A local fraternity, Delta Chi, was the first MSU fraternity to achieve national affiliation. It received approval from Sigma Chi on April 1, 1917, but so many of the men were in military service that formal installation was postponed until November. The first sorority, Alpha Omicron Pi, was chartered Feb. 23, 1917. It was the first social group on campus to have a national affiliation.

Army ROTC pays. When you're in, and when you're out.

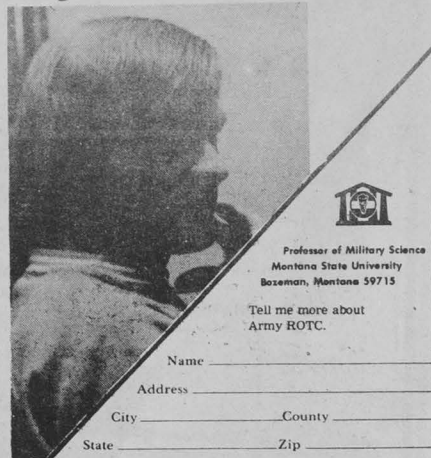
Army ROTC pays you \$100 a month during your last two years of college. But the money, handy as it is, isn't the real reason you should enroll in ROTC.

There is a bigger payoff. The one that comes after you've earned your degree and commission. After you've served your country as an officer. That's the time you'll know the real value of Army ROTC.

When you begin your civilian career. You'll find you have the combination that just about guarantees success — a

good education, fined tuned with military management and experience. Let us tell you about the options. It may not be too late. The two year program is available to qualified students.

Army ROTC. The more you look at it, the better it looks.



Professor of Military Science
Montana State University
Bozeman, Montana 59715

Tell me more about Army ROTC.

Name _____
Address _____
City _____ County _____
State _____ Zip _____
College attending _____

Physical plant maintains whole campus

The physical plant at Montana State University has a multitude of functions best summed up as responsibility for campus maintenance.

Martin Whalen, director, said the plant had several projects going this summer. Installation of the Centrex Telephone system was just one major job. Mountain Bell Telephone Co. did the work, revamping the entire phone system, but Whalen's office was responsible for smooth operations.

Another major project was installation of phase two of the underground electrical distribution system, the primary feed for electricity on the entire campus.

Whalen said overhead lines on 11th Street and Lincoln fed both the former campus underground system and the Montana Power Co. principal line to Livingston. MSU decided to install all underground lines for aesthetic purposes, according to Whalen. The old circuits

were overloaded because of increased consumption on campus.

All campus utility lines will be underground by Oct. 1, according to Whalen. "We hope to have all the overhead lines down by Jan. 1," he said.

"One of the eyesores on campus always has been 11th because of overhead lines and poles."

Whalen said the last major expansion of the electrical system was in 1953. Last year the first portion of replacing existing underground wiring and some overhead was completed of \$175,000.

Phase two is costing \$130,000. The project is funded by the Long Range Building Program financed by Montana's cigarette tax.

The physical plant director said his office is in charge of the heating system, streets, walks, lawn, trees and shrubs, all utilities, storm and

sanitary sewers, as well as for all practical purposes, the campus police, post office, laundry, and various other operations.

Last summer he had five women working on flower beds and added 25 employees to his staff.

Whalen explained why portions of the campus appear torn up.

"We have several buildings under construction right now," he said. "In the process of construction there's considerable excavation, trucks make a mess out of the streets, and buildings have to be connected to utilities by trenching and direct burial."

Under construction are the Museum of the Rockies, the creative arts building, a health and physical education center, a new football stadium, the nursing building, and Leon Johnson Hall.

In addition, a special improvement district was

created for increase of water pressure on the west side of campus. Whalen said pressure was low and the extra water needed for better fire protection is important.

Paving also falls under the physical plant's jurisdiction. A portion of the Roskie Hall and Hedges Hall North parking lots were done.

Minor remodeling was completed throughout the summer in various buildings but the major project was moving agricultural engineering welding facilities from the south Barracks area to Ryon Laboratory, which completed that department's move from the barracks area. The old welding labs will be demolished.

"The whole purpose of my department is to provide the educational environment necessary for instruction of our student body," he said. "Beautification is as necessary as utilities."

Welcome Back!

Choice Grade
Fresh Meat

"Coldest"
Beer
In Town
(Also Keg Beer)

Garden Fresh
Produce

Joe's Parkway
SUPER MARKET

"We Boost the Fighting Bobcats"

AS FIRE RETARDANT

Sky-high fertilizing!

Don't call them "borate bombers" anymore, because they're not. But you could call them "fertilizer bombers" because fertilizer is what that red-colored fire retardant is that you might have seen cascading down onto forest fires this summer from the bellies of those old World War II planes. In firefighting circles, they are simply called "air tankers."

Until 1962, borate was the primary chemical used by the USDA Forest Service as a fire retardant, but borate acted as a harsh soil sterilant of quite long duration. Besides, while it may have saved the trees

from burning, it killed the foliage that it came in contact with. So the Forest Service, working in conjunction with the fertilizer industry, has developed greatly improved types of fire retardants which do not harm the environment.

According to Charles W. George, research forester at the Forest Service's Northern Forest Fire Laboratory, Missoula, modern forest fire retardants are either liquid or dry-type fertilizers. These materials are mixed with water and dropped in bulk from aircraft flying at near-treetop levels.

"There are two general types of forest fire retardants currently in use — thickened and unthickened," according to George. Both types are mixed with water. The purpose of the fertilizer chemical is to alter combustion reactions of a fire so that burning is retarded. Retardants are used primarily to buy time and reduce the effort necessary to suppress wildfires."

The viscous retardants are most effective in the control of upper story or treetop forest fires and in brushy areas of Southern California where there is little or no ground cover. Because of its better penetration, the low viscosity retardants are ideally used on

understory fires in ground cover and duff, such as the smoldering type of fire of an Alaska muskeg or tundra.

Retardant drops — usually of between 600 and 3,000 gallons — are made at heights of between 75 and 300 feet above ground. As drop height is increased, retardant dispersal and the effect of wind also increase. Thickened retardants have a much better chance of reaching the target under the more difficult situations often prevailing during large fires. Drop height, aircraft speed, and wind influence the effectiveness.

The Forest Service is always looking for new and better fire retardant solutions to use for aerial drops on forest fires. And this search affords a continual challenge to the fertilizer industry to produce better products.

"Among the requirements for a suitable retardant," George said, "and one that people should be aware of is that a retardant should not be hazardous to plants, animals, fish, or humans when applied to forest or rangeland."

Fire retardant planes in the Northern Region are based at the Aerial Fire Depot west of Missoula, West Yellowstone, Kalispell, Helena, Grangeville, and Coeur d'Alene.

WELCOME

STUDENTS & FACULTY

TEEPEE GAS

Bill Gum, Mgr. — 587-1841 — 2230 West Main

Self Service — No Tokens

"Remember" "It Costs Less To Gas With Gum"

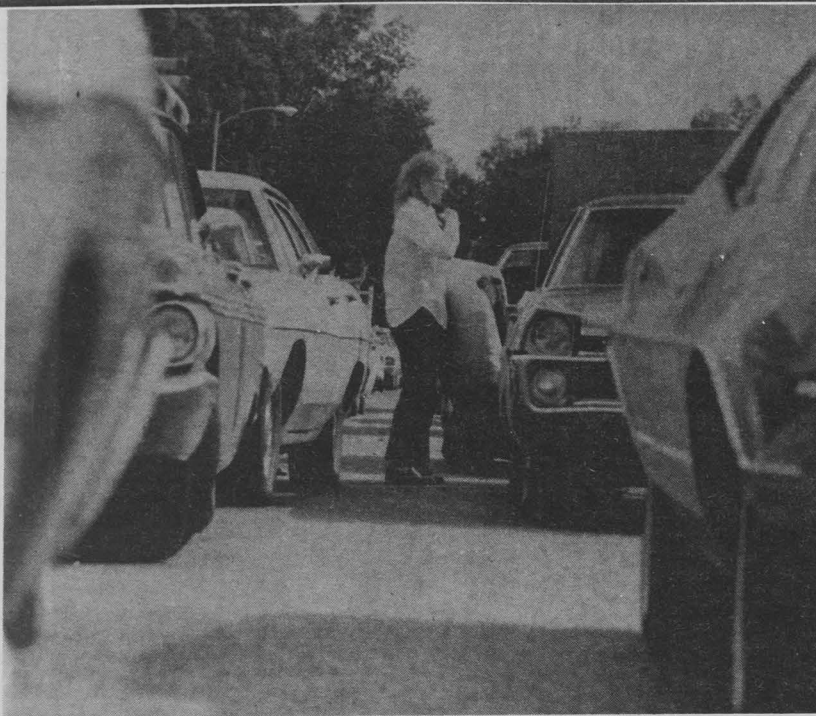
Another Addition to Teepee Gas—

Bozeman's Newest Laundromat

Open 7:30 a.m. — 10 p.m.

Regular student enrollment at MSU during World War II was low. Registrations dropped from a high of 1,801 in 1941 to 1,155 in 1944-45. But in 1945-46 the number rose strikingly to 2,014, and returning veterans skyrocketed enrollment to 3,591 in 1946-47 and 3,664 in 1947-48.

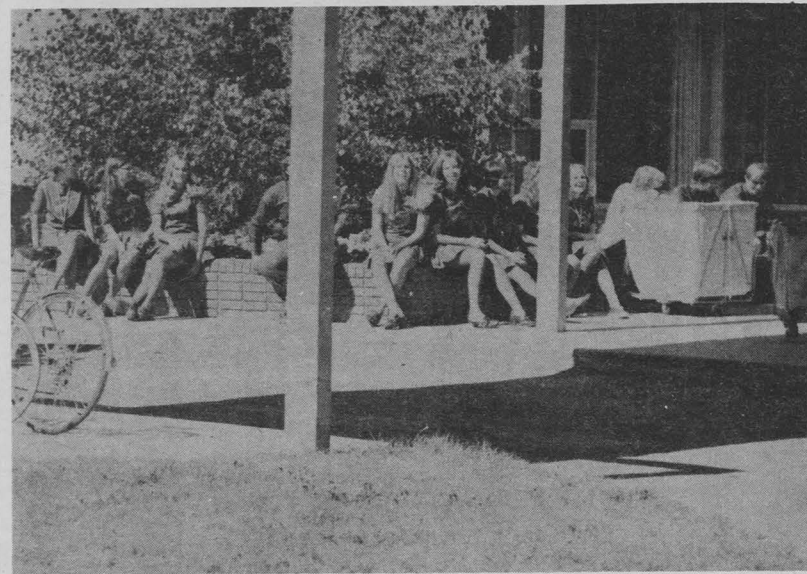
When Montana achieved statehood in 1889, the federal government turned over the Fort Ellis site east of Bozeman to the state. National guard summer camps were held there for a few years, then the 640-acre site was turned over to Montana State College as a dryland experimental plot.



For all of you with cars, don't worry, the parking problem isn't that bad. I hear it clears up during Christmas break, spring break, summer vacation . . .

Freshmen

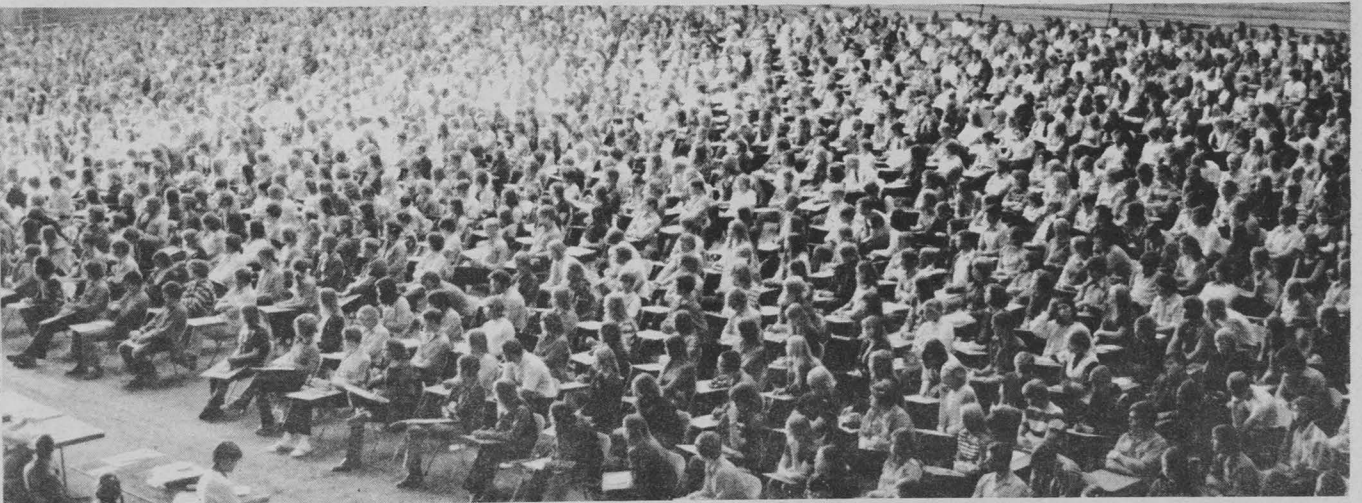
Welcome



. . . but the hard working Circle K, Spurs, and Fangs are always ready to help . . .



. . . so with dogs and monkeys in hand you moved in without knowing about . . .

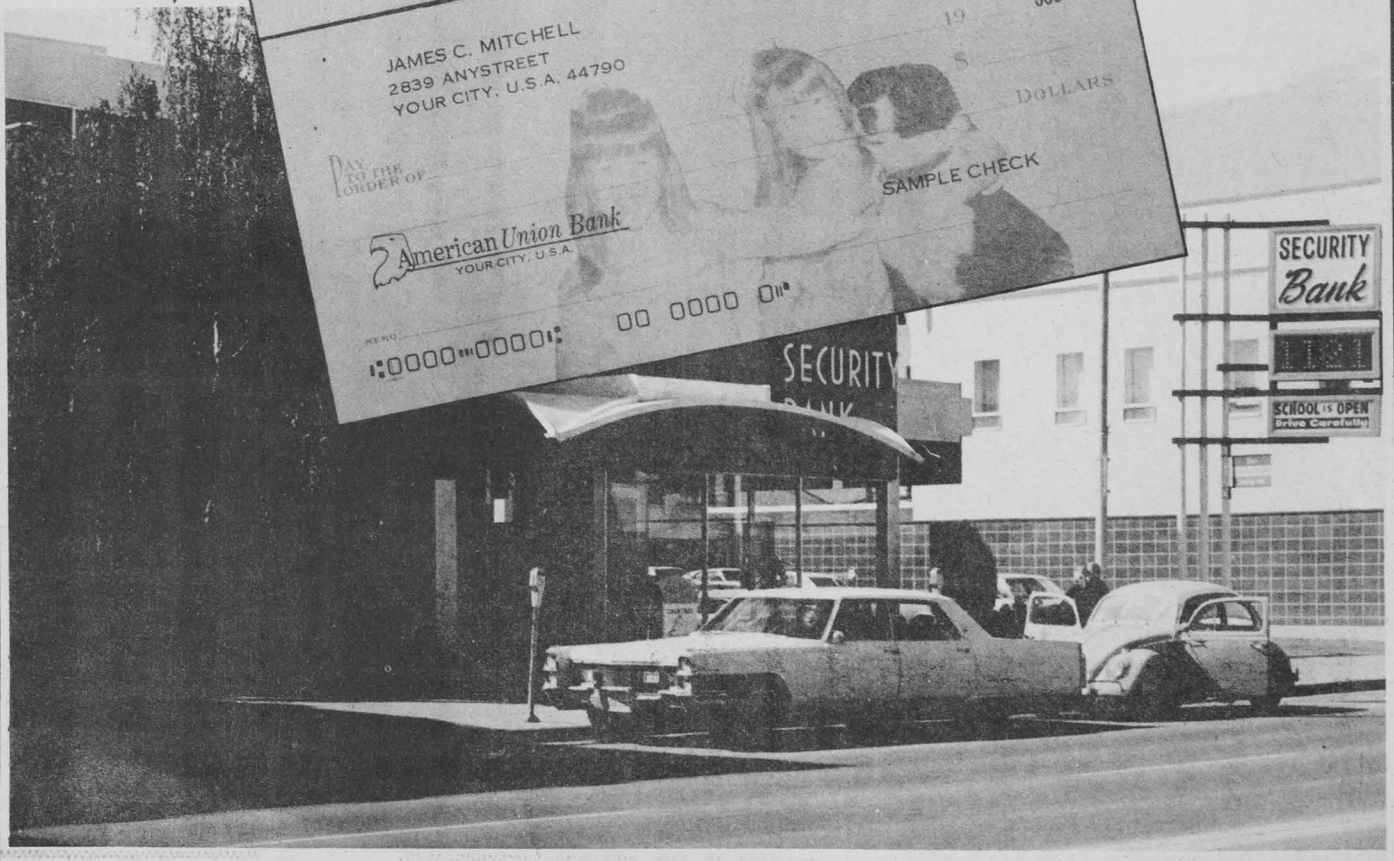


. . . The mass lecture that was waiting for you.

Do Your Own "Thing" With Security Bank's New PHOTO - CHECKS

With our new PHOTO CHECKS, you can individualize your checks so they look like no other checks in the world. Choose whatever picture you wish . . . and we'll put it on your checks. With SECURITY, you're a person, not a number.

ONLY AT



Local law academy duties explained

By Joe Nistler
Staff Reporter

Housed on the fourth floor of Colter Hall at MSU, the Montana Law Enforcement Academy is striving to make state law enforcement officers more knowledgeable about their profession.

According to Charles Skillen, academy director, there are two types of periodic instruction given — the four-week basic school and the two-week advanced school.

He explained that the basic school is primarily for those officers with less than three years experience. "We get people from the sheriff's department, city police, the Fish and Game Department, Campus Security Police, the state fire marshall's office, gross value weight scalemen, park service people, capital security officers from Helena, and even law enforcement officers from out-of-state."

This year's June basic school covered almost 50 different subjects during the 170 hours of classtime in the SUB. Areas of study included such diverse topics as Bomb Recognition and Disposal,

Narcotics and Dangerous Drugs, Public Speaking, and Search and Seizure.

Skillen noted that classroom study was supplemented by individual study and numerous hours of practice with firearms at the Academy range, located on the Kelly Canyon road.

Practical experience through actual cases is emphasized in advanced MLEA schools. Skillen said that arrest procedures, crime reports, fingerprinting, and homicide investigation are major areas of advanced study.

Instructors for both basic and advanced study include FBI agents, High Patrolmen, Warm Springs personnel (to discuss criminal psychology), veteran policemen, Skillen, and his assistant director, Chuck O'Reilly.

Skillen stated that the advanced schools were especially popular with the police departments from very small Montana towns.

"A smaller community will try to get a man into as many schools as possible, because there may be only two or three

officers in that town. One man from a little department may attend 7 or 8 schools," he said.

The MLEA pays for mileage, room, board, and tuition for all of its students



Charles Skillen

under provisions made by the governor's Crime Control Committee.

Officers stay in the Lewis and Clark dormitories while at

MSU. Of the 1,806 students who have participated in the MLEA program from its inception in 1959 through the end of 1971, less than two per cent have been women.

Skillen mentioned, "We're real strong in legal subjects, because it has been determined by the courts that law enforcement departments are responsible for their personnel. Therefore, the main problems we are concerned with are 'Is an officer's arrest or search legal, and 'When should an officer use his firearms.'"

The MLEA also sponsors a police court school, a school for justices of the peace, and a rifle course taught by the National Rifle Association.

As of September 1, the MLEA was placed under the Attorney General's office as part of executive reorganization in state government.

Skillen said that the reorganization will probably lead to even more state law enforcement officers attending the MLEA in an attempt to upgrade the entire state operation.

Phillips
BOOK STORE

Has Been
Serving

MONTANA
STATE
COLLEGE

Since 1897



We Are Proud
To Be Serving
The University
Now



YOUR
DOWNTOWN
STUDENT
STORE

PHILLIPS
BOOK
STORE



We Have Most
of Your Needs



If We Don't
Have It
We Will Tell
You

Where You Can
Find
What You
Want!

PHILLIPS
BOOK STORE

111 E. Main

586-9544

Sharp notes possible U.S.-U.S.S.R. cereal research

A proposal aimed at strengthening research cooperation between Communist countries and those of the free world was put forth during the recent International Cereal Rust Conference held in Prague, Czechoslovakia, said Eugene Sharp, Montana State University research plant pathologist.

Sharp was one of six U.S. representatives attending the eight-day conference, the purpose of which is to find ways to lick rust diseases in wheat, barley and oats.

Working under the theme of

"Peace and Bread for the World," participating scientists proposed that international nurseries be established so that any cereals producing country would have access to all varieties and selections of cereal grain.

"Heretofore, there were problems in acquiring varietal stock from some nations, particularly those in the eastern bloc," explained Sharp.

The worldwide nursery system is badly needed, he said, so that plant breeders can work more efficiently

toward developing varieties that can resist rust diseases.

The MSU scientist sees the proposal as just a preliminary step. "Russian scientists liked the idea, but said they would have to get approval from higher authority before making any commitments."

Sharp addressed the conference to outline the importance of Montana's contribution to cereal grain production. He also presented a formal paper on his work with rust diseases and was chairman of one session

dealing with genetic resistance.

Official languages for the conference were English and Russian. Interpreters and individual earphones took care of the linguistics situation.

The conference was great and our host was most gracious, said Sharp, "but many of us had some trouble getting used to sardines and hot plum juice for breakfast — and no coffee."

He said the next conference, in 1976, will be held in Switzerland.

CREATIVE ARTS

Complex to open in '74

The Creative Arts Complex now under construction at Montana State University should be a big boost to a number of academic departments when it opens in 1974, according to Campus Architect Andy van Teylingen.

Housed in the \$3.5 million structure, located east of Hedges Halls on 11th Avenue, will be Art, Architecture, Music and Industrial Arts.

Work on the complex began last spring and should be finished in time for autumn classes in 1974.

"The building means that Art will be able to get out of the basement of the library, Hannon Hall (a girls' dormitory) and Herrick Hall," said van Teylingen.

"With more permanent housing," he added, "the Art School will have adequate studios for design and sculpture.

"For Architecture, he continued, "the Creative Arts Complex promises additional space for classrooms and much better design studios."

Architecture is now temporarily housed in the basement of the library — with Art — and on the fourth floor of Reid Hall.

Moving Architecture out of Reid will mean more classroom space for Commerce, van Teylingen noted.

"Music will be moved from temporary buildings we bought from a chromium mine in 1947," he said.

From the South Barracks, built just after World War I, will come Industrial Arts. Said van Teylingen, "They'll have decent shops to work in, as modern as any in the country."

The complex is being built entirely with funds derived from student fees.

ROTC head named

A former faculty member and administrator at the U.S. Air Force Academy, Col. James E. Banks, has been appointed head of the Military Aerospace Studies Department.

Banks, 42, will direct the university's Air Force ROTC program. He succeeds Col. Lavern C. Hutchins, who retired recently from active military service.

A specialist in analytical chemistry who holds a bachelor's degree, a master's and a PhD in that field from Stanford University, Banks has spent most of his military career as a teacher and researcher at the Air Force Academy.

He entered the Air Force in 1955 and was appointed to the Academy faculty in 1958. From 1968 to 1970 he spent as an exchange professor at the Philippine Military Academy. He returned to the USAF Academy in 1970 and was

SCHOOL SONGS

FIGHT ON MONTANA STATE

Fight on Montana State
 March down that field of play
 Fight on, you Bobcats
 We're with you all the way.
 Rah! Rah! Rah!
 We'll cheer for old MSU,
 Our blue and gold team
 Will lead us to victory.
 So fight on, Montana State
 We're going to win today.



ALMA MATER

Fling wide our colors, bright and true,
 Sunlight gold and ether blue
 Fit emblem of our college days,
 Proudly we our banner raise.

Chorus:

Oh, MSU right loyally,
 We offer songs of praise to thee;
 Long may thy power enduring be,
 Alma Mater, hail to thee!

When years have born us far away,
 Memory shall keep today,
 We'll gladly owe to MSU
 What we are and hope to do.

Support



the Bobcats!

WE'RE THE WATUSIS

We're the Watusis
 We're eleven feet tall.
 We fight the Nairobis
 They're no good at all.
 The cannibals may eat us,
 But they'll never beat us
 Cause we're the Watusis
 We're eleven feet tall.
 Ungawa! Ungawa! Ungawa!



STAND UP AND CHEER

Stand up and cheer,
 Cheer loud and long for dear Montana
 For today we raise
 The blue and gold to reign victorious.
 Our sturdy band now is fighting
 And we are here to win the fray.
 We've got to win, Rah! Rah!
 We're here to win, Rah! Rah!
 For this is dear Montana's Day.

Early faculty at Montana State were attracted to the new school, at salaries of 1,200 to \$1,500 a year. Many were graduates of the best institutions in the country, and more came from Harvard than any other school in the U.S.

TAPES

Latest & Greatest
 8-Track & Cassette

\$1.99

BACK TO SCHOOL AUDIO SALE

AMPEX

Tape Recorders and Audio Equipment

30 to 50% DISCOUNT

WE'RE GLAD YOU'RE BACK!

HITACHI

Modular Components

- AM/FM Radio
- Phono
- Air Susp. Speakers
- 8 Track Player (Retail \$269.95) with Cassette Recorder Add. \$50



\$199

AMPEX CASSETTE RECORDERS

Compact Portable

Micro 9A Complete

- * Mike
- * Case
- * AC Cord and Earphones

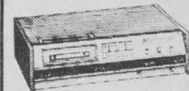
Compare at \$69.95 or more

\$39.90

Limited Quantity



Stereo Home Deck
 Plugs into your stereo . . .

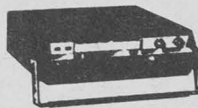


Micro 54 Automatic Eject Mfg. Sugg. List \$159.95

Cassette Recorder/Player

\$99.90

HITACHI 4-WAY AUTO STEREO



- Auto
- Portable
- Home

CASSETTE Player/Recorder

Locks in Car, Plays on 12 Volts, AC Battery

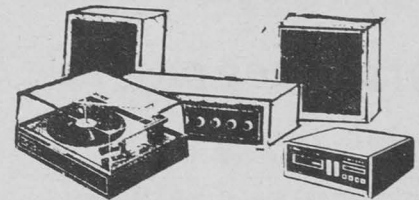
Compare at \$129.95 \$99.90

Admiral Stereo Components

- Stereo Amplifier
- AM/FM Stereo
- BSR 2000X Record Chgr.
- 8-Track Stereo Player

\$239.95 Retail Value

\$139.90



You can add a cassette player/recorder deck for . . . \$69

BSR HiFi Record Changer 310X

- Deluxe Automatic Record Changer
- * Shure Magnetic Cartridge
 - * Diamond Stylus
 - * Base & Dust Cover



\$49.90

Mfg. Sugg. Retail \$80.00

SAVE 38%

AKAI

Special Introductory Prices



Finest quality most advanced open Reel Tape Recorders

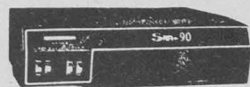


New HiFi Stereo Cassette Tape Recorders that play both sides!



New 4 Channel Stereo Amplifiers and Tuners . . . Stereo Speakers

Boman 8 TRACK AUTO STEREO



Deluxe 'Sport 90'

\$29.90

- * Dual Tone Controls
- * Powerful Amplifier
- * Stereo Speakers

Complete with Speakers Compare at \$69.95

Toyo



Quad 8 4 Channel 8-Track Tape Player 4 Speakers

\$168

Retail \$259.85

8 TRACK RECORDER HOME DECK

\$99.90 Retail \$119.95



8 Track Portable Stereo Recorder

\$88

Retail \$129.00



10 E. Main
Showcase



Schwinn®

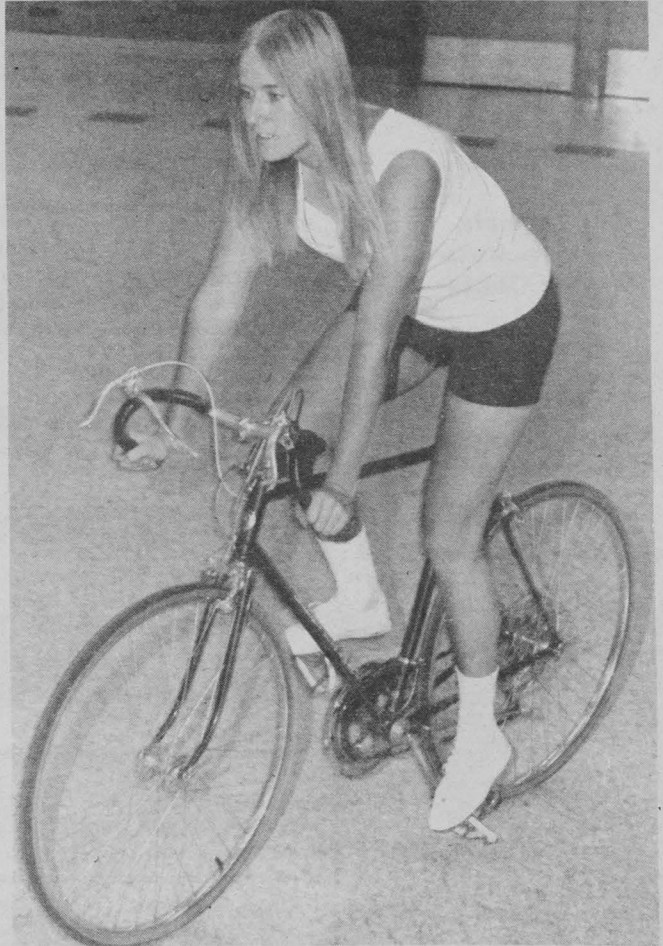
... for the young in heart

Schwinn
Quality
saves you
money

STUDENT CYCLING HEADQUARTERS . . .

More and more students are turning to cycling for the best in exercise and recreation. Stop in, let us put you on the bike best suited for you . . . wide selection of sports and tourist models, fitted and ready-to-ride.

Schwinn
Factory
Trained
Service



Bozeman's Cycling Headquarters

Locks, Lights, Packs, Extra Nuts & Bolts

OWENHOUSE HARDWARE CO.



ATTENTION M S U



McCRACKEN'S 1st ANNUAL

YELLOW TAG

S A L E

**Ski Jackets
Work Jackets
Winter Coats**

40% Off

**Famous
Brand Name
Underwear**

40% Off

Cut out this ad and bring it to McCracken's. It will entitle you to \$3.00 off on any Bailey felt hat of your choice. We have a wide selection.

**All
Double Knit
Slacks**

15% Off

GIRLS
SWEATERS
SLACKS
BLOUSES

UP TO 40% OFF

**End's Tomorrow -
Saturday - Sept. 23**

**So get it together and make it on down -- NOW
Take Advantage of Savings Of Up To 60%**



Come down today and register for \$100 worth of gift certificates to be given away. Drawing will be held tomorrow. You may be one of 5 lucky winners.



SLACKS
HUNDREDS LEFT
AT UP TO
40% Off

**All Denim
and
Brush Jeans**

10% Off

**POPULAR BRAND NAME
BOOTS**

30% OFF

**All Short Sleeve
Sport Shirts**

30% Off

**SPORT COATS
&
SUITS**

**40% Off
50% Off
60% Off**

131 East Main

McCRACKEN'S

Phone 586-9570