



MAIN STREET HELENA, MONTANA, 1870

PHOTO POST CARD

Kodak
PLACE
STAMP
HERE
Paper

ADDRESS

Hometown of both parents - J. R. Cumming ¹⁸⁹²
and Marguerite A. Moreau
(Cumming) 1894



Dear Ivan & Carol,

We are very excited about October
7th and look forward not only to
an afternoon event / book signing but
to hosting you in our still-standing house.
Until then, take care and it will be
lovely to have you back in Montana.

~~AT~~

The Nature
Conservancy



Protecting nature. Preserving life.™

The mission of The Nature Conservancy is to
conserve the lands and waters on which all life depends.

nature.org/montana

Golden light over Montana grasslands.
The Nature Conservancy is working with landowners to conserve
the state's wide open spaces for both wildlife and family ranchers.

© Bebe Crouse

When the last free trail
Is a prim fenced lane,
And our graves grow weeds
Through forgetful Mays,

Richer and statelier, than
You'll reign, mother of men
Whom the world will praise

And our sons will love you,
And sigh for you, and labor
And battle and die for you.

But never the fondest will understand,

The way we have loved you.

Young, young, young land!

Anonymous

March 15, 2013

Ivan and Carol Doig
17277 15th Avenue NW
Seattle, WA 98177-3846

Program Update

Dear Ivan and Carol,

I am pleased and honored to take the helm of the Montana Chapter during the search for a new State Director. The chapter has a sterling reputation for its extraordinary conservation achievements and exemplary staff; both of which I've been able to see firsthand since my arrival in Helena. Without any diminishment of those conservation successes, I must say that I stand in awe of the formidable collection of talent, experience, and passion that makes up the Montana staff. They are truly the reason that this relatively small chapter has been able to reach such enormous conservation goals.

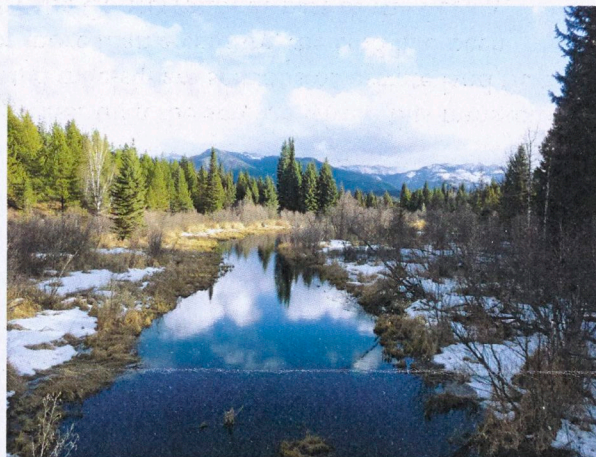
My arrival in Helena came on the heels of three impressive additions to our conservation portfolio.

Swan River State Forest – Crown of the Continent

Another 14,624 acres surrounding the spectacular Swan Valley is now in the hands of the people of Montana with our sale to the state Department of Natural Resources and Conservation (DNRC). The land, which was part of our 310,586-acre Montana Legacy Project, is covered by a conservation easement held by the state department of Fish, Wildlife & Parks (FWP). The easement will limit permanent development of the land while allowing it to remain a working forest.

The state forest is a key piece of a broad sweep of land that sustains the Swan River system. Sparkling streams, tumbling out of the rugged Mission and Swan Mountains, feed the river. The cool forests and lush wetlands harbor grizzly bears, Canada lynx, wolverine, and wolves, as well as loons, eagles, and a host of other birds.

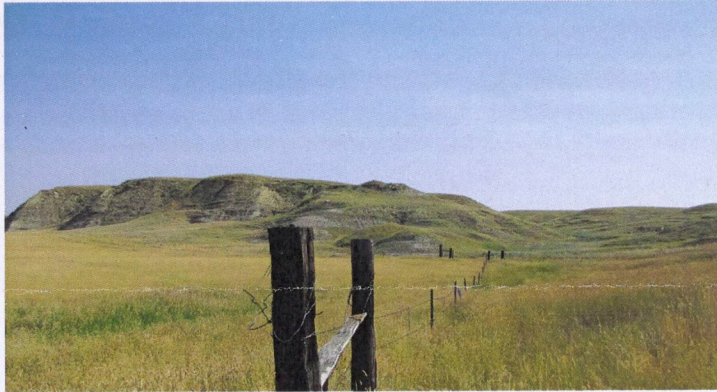
But the true conservation impact of this sale is far greater than the acreage within this transaction. That's because this land includes more than 18 disconnected mile-square sections of private land that were scattered like cards within the larger state forest. For more than a century, the land had been logged by a succession of owners until it was purchased by the Conservancy as part of the Legacy Project. This sale helps meet one of the project's primary goals: to re-connect fractured holdings so that they remain resilient and beneficial to people and wildlife for many generations to come.



Swan River State Forest is a rich mosaic of forest, streams, and wetlands that supports a wide variety of wildlife. © Steve Kloetzel/TNC

Carroll Easement – Northern Prairies

Declining grassland birds, pronghorn, and swift fox are among the animals that will benefit from a new 7,004-acre easement on the Carroll property on Montana's Northern Prairie. The easement covers high quality mixed-grass prairie and adjoins one of Montana's largest proposed prairie wildernesses, the Bitter Creek Wilderness Study Area. This study area has also been designated by the Bureau of Land Management as an Area of Critical Environmental Concern.



The land conserved by the Carroll easement helps assure the integrity of the state's largest proposed prairie wilderness area. © Bebe Crouse/TNC

When we think of wilderness, an image of craggy mountain peaks often comes to mind, yet this remote rangeland may see fewer people than places in the well-known Bob Marshall Wilderness. This easement ensures that intact habitat will remain for both pronghorn and Greater Sage-grouse, which depend on this land for their twice-yearly migrations. In the case of the Sage-grouse, this area is in the heart of a migratory path of the birds' longest journey – more than 100 miles each way. The federal government

determined that both Greater Sage-grouse and Sprague's Pipit meet the criteria for being threatened species but precluded that action until 2014. These Sage-grouse are also Canada's last sustainable population, making their conservation of international concern. Similarly declining birds that depend on this land include Chestnut-collared Longspurs, Baird's Sparrows, Lark buntings, and Long-billed Curlews. Other Species of Concern that find refuge here are the tiny swift fox and regal Ferruginous Hawk.

We are grateful to the U.S. Natural Resources Conservation Service for providing part of the funding for this purchase.

Steel Creek Ranch – Southwest Montana

A rich mosaic of sagebrush steppe, streams, and wetlands of the Big Hole Valley's Steel Creek Ranch is now protected with a 2,013-acre conservation easement, and with it, habitat for wildlife ranging from moose and gray wolves to Greater Sage-grouse and Arctic grayling. Recent subdivision and development nearby had threatened to pinch off an essential seasonal migration route for pronghorn moving between the Pioneer Mountains to the east and the Big Hole Valley bottom to the west. Conservation of the ranch preserves a last, narrow pathway (less than one half mile wide!) for these amazing creatures to reach vital seasonal range.



Conservation of the Steel Creek Ranch protects a narrow, but vital migration pathway for pronghorn. © Jim Berkey/TNC

Steel Creek is also one of the most productive fluvial Arctic grayling spawning streams in the Big Hole Valley and has been a restoration priority for many years. Other wildlife frequenting the

ranch include deer, elk, Bald Eagles, Ferruginous Hawks, Long-billed Curlew, Sandhill Cranes, pygmy rabbits, and numerous species of ducks.

We are pleased to have been able to work with Beartooth Capital on this project. Beartooth is a private firm that deals in ranch properties that are in need of restoration and long-term conservation. Along with partners at Montana Fish, Wildlife & Parks and the federal Natural Resource Conservation Service, the firm has been actively restoring the streamside and wetland habitat on the ranch.

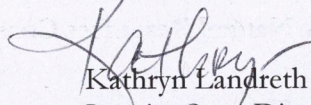
Nature and Art

The well-worn adage that "a picture is worth a thousand words" remains especially true in the realm of conservation. In that spirit, we are honored to support a wonderful exhibit at Helena's Holter Museum of Art entitled *Montana's Living Landscape: A Photographic Essay*. The show features the work of seven Montana photographers who have contributed work to The Nature Conservancy in Montana. It's just a wonderful show, and if you haven't had a chance to see it, be sure to stop by before it closes on April 14. While there, you can also take in a marvelous collection of Ansel Adams' photographs from the collection of Lynn and Tom Meredith. Some of you know Tom as a former member of the Conservancy's Montana Board of Trustees and a current member of our global board.

The search for a new State Director is progressing on schedule, and we hope to have good news to report on that front in the coming weeks. In the meantime, we continue to move forward with our conservation efforts across the state.

Please don't hesitate to contact me with your ideas, questions, or if you'd just like to visit.

All the best,


Kathryn Landreth
Interim State Director

Thanks so much!



Thank you for your generous support.

Just one of the gorgeous prints of the 'Montana's Living Landscape' exhibit at the Holter Museum of Art in Helena through April 14th.

Peregrine Falcon © Kate Davis

January 10, 2013

Ivan and Carol Doig
17277 15th Avenue NW
Seattle, WA 98177-3846

Dear Ivan and Carol,

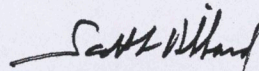
As a friend of The Nature Conservancy in Montana, you may or may not have heard that our State Director, Kat Imhoff, who has admirably led the chapter for the past five years, is moving on to another wonderful opportunity. Kat has accepted a position as the President of James Madison's Montpelier and Center for the Constitution. We wish Kat the very best as she takes her considerable experience and talents to protect one of our country's most prominent heritage sites. Kat's official last day with the Montana chapter was January 2, 2013. She can be reached in her new capacity at kimhoff@montpelier.org.

We have a strong transition plan in place. Kathryn Landreth, formerly the Nevada State Director for The Nature Conservancy, has agreed to act as Interim State Director. Kathryn's long tenure with the Conservancy, her deep experience in conservation, and the respect she enjoys from her colleagues and partners make her an excellent choice to lead the chapter during this transition. She visited the chapter before the new year and began full-time on January 7th.

Our search committee is working hard to recruit a new State Director with the goal of filling the position in the spring. The committee consists of Kathryn Landreth, Western Division Director Karen Berky, Idaho State Director Toni Hardesty, Montana Chapter board members Page Dabney and Eliza Frazer, and me, the Chairman of the Montana board.


I want to assure you that the Montana Chapter continues to move forward with our great conservation work. Our seasoned staff will be working closely with Kathryn and the new State Director to ensure that our mission advances during the transition. If you have any concerns or questions, please don't hesitate to contact Kathryn at klandreth@tnc.org or (406) 443-0303. We would love your input on this next exciting chapter for conservation in Montana.

Sincerely,



Scott Hibbard
Chairman of the Board

SPRING 2012

The Nature
Conservancy 
Protecting nature. Preserving life.™



MONTANA
Landmarks

A MAGAZINE OF
THE NATURE CONSERVANCY IN MONTANA

MONTANA

wants
11th March.

The Magazine of Western History
Montana Historical Society Press

Molly Holz

Editor

(406) 444-0090 Fax (406) 444-2696

mholz@mt.gov



MONTANA HISTORICAL SOCIETY

225 North Roberts ♦ PO Box 201201 ♦ Helena, MT 59620-1201
(406) 444-2694 ♦ (800) 243-9900 ♦ www.montanahistoricalsociety.org

MICHAEL KORN

HELENA AREA COORDINATOR



***Montana Fish,
Wildlife & Parks***

930 CUSTER AVENUE WEST • HELENA, MONTANA 59620-0701
OFFICE (406) 495-3260 FAX (406) 495-3273

OFFICE OF THE GOVERNOR
STATE OF MONTANA

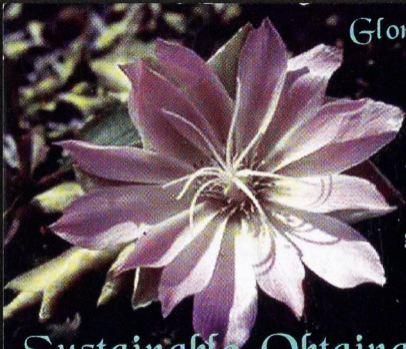


ANN BRODSKY
LEGAL COUNSEL

STATE CAPITOL
HELENA, MT 59620-0801

EMAIL
abrodsky@mt.gov

TELEPHONE: (406) 444-3558
FAX: (406) 444-4151



Gloria Flora, Director

P.O. Box 1424

Helena, MT 59624

406 495-0738

(fax) 406 495-9703

(cell) 406 459-3486

gflora@s-o-solutions.org

Sustainable Obtainable Solutions

There are two things that interest me, the relationship of people to their land and the relationship of people to each other.

Aldo Leopold

*The Episcopal Church of the Nativity, Helena
St. John's Episcopal Church, Townsend*



The Reverend Deacon

John C. Board

*2704 Gold Rush Avenue
Helena, Montana 59601-5661*

Phone: 406-442-9308

Email: jcboard@bresnan.net



John E. Taylor

PHOTOGRAPHER

508 Holter
Helena, MT 59601
(406) 442-9667

Jack & Kay

HELENA BUSINESS GUIDE

ACCOUNTANTS

Galusha, Higgins and Galusha
Certified Public Accounts
Arcade Building
442-5520
Quality Service Since 1919

ADVERTISING AGENCIES

Ad Pro Advertising — Ron Deyle
Now featuring Jet Script® Laser Typesetting
Brochures • Newsletters • Logo Design
Typesetting • Production • Planning
110 East Lyndale Avenue — 449-7073

ART GALLERIES

The Artful Framers Gallery
Limited Edition & Original Art Work
Custom Framing
Located in Livery Square
23 Neill Ave. — 449-6386

Cason Fine Art Gallery & Custom Jewelry Design

Mid-downtown Helena — on the Walking Mall.
7 No. Last Chance Gulch — 443-5919
Original Fine Art, Sculpture, Carvings & Prints
Diamonds & Yogo Sapphires — Signature Cut Crystal

Holton's of Helena, Ltd.

1219 11th Ave. — 442-3688
Fine Art by Montana Artists
Made-in-Montana Gifts, Yogo Sapphire Jewelry
Books on Montana, Local Interest & Nature

Tatem House

440 South Park — 442-8375
Tues.-Sat. 10-5:30
Handcrafted Pottery, Etchings, Weavings,
Jewelry, Crafts & Art by Montana Artists
Beautifully displayed in one of Helena's Historic Landmarks

BANKS & SAVINGS INSTITUTES

American Federal Savings & Loan Association

347 N. Last Chance Gulch — 442-3080
Three convenient locations to serve you.
Main Office — Last Chance Gulch
Drive-up Satellites — 28 Neill Ave. & 1930 Prospect Ave.

Bank of Montana

500 N. Main (Last Chance Gulch)
(406) 442-1850
Convenient Downtown Location
Free Parking — 24 Hour Cashcards

Norwest Bank Helena, N.A.

350 N. Last Chance Gulch — 447-2000
3 Convenient Instant Cash Locations
Express Bank — Fuller & Placer
Capital Hill Mall — 1600 11th Ave.
SuperAmerica — 401 Euclid
Helena's Oldest Bank — We're 911

First Bank Helena

6th & Last Chance Gulch — 442-2540
2 Convenient Fast Bank® Locations
6th & Last Chance Gulch — Bank Lobby
Buttrey Foods — 1000 Boulder Ave.
Member Plus System

Valley Bank of Helena

3030 N. Montana — 443-7440
A Full Service Bank — Member F.D.I.C.
2 Instant Cash Locations
3030 N. Montana Avenue & Lundy Center

CARD & GIFT SHOP & FLOWERS

Leslie's Hallmark & Flowers

Fresh Flowers
Candy Shop — Souvenirs
Large Selection of Gifts for any Occasion
In the Capital Hill Mall and Downtown

CAR RENTALS

Budget Rent-A-Car

Bob's Fine Cars, Inc.

1930 N. Main

Ph. 442-7011 ANYTIME

4x4 and RV Rentals

Capital Rent-A-Car

1330 Prospect Ave. — (406) 442-6310
Associate of Capital Ford Sales
Lowest New Car Rental Rates in Helena
Free Pick-Up and Delivery — Half Day Rates Available

DAILY NEWSPAPER

Independent Record

442-7190 — 1-800-523-2272
317 Cruse Ave. — P.O. Box 4249
Capital Country's Morning Newspaper

CUSTOM FRAMING

Ben Franklin Frame Shop

Lundy Shopping Center
See Steve, Al or Bob for Free Estimates
442-2040

THEATRES

Grandstreet Theatre "The Show Place of Helena"

Community Theatre — Open Year Round
• Live Dramas • Broadway Musicals •
• Costume Rentals • Children's Shows •
Call 442-4270 or 443-3311 for information

Second Story Cinema

9 Placer St. — 443-0287
Helena's showcase for classic, contemporary,
American & foreign films. Many premieres.
HELENA SERIES FOR THE PERFORMING ARTS

HOSPITALS

St. Peter's Community Hospital

2475 Broadway — 442-2480
24-hour emergency room — 444-2150
Ambulance Service — 442-3123

Shodair Children's Hospital

840 Helena Avenue — 444-7500
Child Psychiatric Services, Medical Genetics,
Adoption Services, Child Abuse Prevention

LODGING, FOOD & SPIRITS

Best Western Colonial Inn

2301 Colonial Dr. — 443-2100
2 Pools, Indoor & Outdoor
Sauna & Spa
Restaurant & Lounge

Shilo Inn

2020 Prospect Avenue — 442-0320
Nationwide Toll Free 1-800-222-2244
Free Continental Breakfast & Airport Shuttle
Indoor Pool - Steam — Sauna

PARKS & RECREATION FACILITIES

Lewis & Clark County Fairgrounds

Camping and Picnic Facilities
Annual Stampede & Fair Last Week in July
P.O. Box 4237 — Custer & Henderson St.
442-1098

PRINTERS

Century Lithographers

Full Service Printers
648 North Jackson
Helena, Montana
442-5595

REAL ESTATE & RENTALS

Sandy McPherson, Inc., Realtors

75 East Lyndale — 442-6333
Serving Your Real Estate Needs Since 1965
Real Estate is our ONLY business
Call Us Any Time!

RESTAURANTS

The Stonehouse Restaurant

Located at Historic Readers Alley
A unique dining experience
in the atmosphere of 1890's Helena.
Lunch 11-2 / Dinner 5:30-10
(406) 449-2552

Tony's Restaurant & Lounge

1827 Prospect Avenue
443-0850 or 443-0854
Live Action Keno
Poker & Keno Machines

TRAVEL AGENCIES

Anderson-Elrading Travel Service

550 N. Montana Avenue
406-442-7900 / 1-800-442-1200 toll free
Official American Express Representative
No Charge for Service

Your Adventure Travel

34 N. Last Chance Gulch, Suite 100
406-442-4493 / 1-800-338-8785 toll free
"We are a free service to you
in the heart of downtown Helena"

TOURIST ATTRACTIONS

Eldorado Sapphire Mine

6240 Nelson Road
442-7960 #034
Open April 15 - October 15 (7 am - 6 pm)
Our reputation is "LARGE SAPPHIRES"

Frontier Town

Museum, Fine Dining, Bar & Lounge
Largest Gift & Curio Shop in the Area
15 Miles West of Helena on U.S. 12
Phone 442-4560

Holter Museum of Art

12 E. Lawrence Street
The Museum exhibits quality works of varied media
in periods ranging from historical to contemporary.
Sponsored by the Helena Arts Council,
a non profit organization.
Hours: Tuesday-Saturday, 10 a.m.-5 p.m.
Sunday, noon-5 p.m.

Montana Traditional Jazz Festival

"Greatest Traditional Jazz Festival in the West"
Last Full Weekend in June
P.O. Box 856 — Helena, MT 59624
443-4754

Centennial Waterslide Park

Hot Springs • Kid's Pool • BBQ • Volleyball
Separate Adult Facility • Complete Health Club
Steambath • Sauna • Lap Pools
4420 Hiway 12 West — 443-5777

24 HOUR SHOPPING MARKETS

County Market

3050 N. Montana Avenue
443-0635
Complete Bakery, Produce and Meat Department
"Compare the Bottom Line"

UTILITIES

The Montana Power Company

1315 North Main
Electricity and Natural Gas
Call for a Free
Energy Audit
442-4610

HISTORIC HELENA

by VIVIAN A. PALADIN,

Former Editor, MONTANA the Magazine of Western History

There are many capital cities in the country which are much larger and better known, but there are none more interesting, colorful, or indeed unique, than Helena, since 1875 the capital of Montana Territory and State. Its beginnings, in the twisting, narrow mountain defile which is today its main street, came in 1864, when four discouraged prospectors found gold in paying quantities along a tiny stream and called the place Last Chance Gulch.

The four prospectors, Reginald Stanley, John Crabb, John Cowan and D.J. Miller, have become known to history as the Four Georgians, although only two of them were from that state. What is important is the fact that they were typical of their breed. They stayed long enough to see their first strike become the scene of countless log cabins, and they participated in the first efforts at enforcing rough mining laws and ensure the safety of their own claims to water and promising ground. But none of them stayed long.

They were soon followed, however, by others who were interested in more solid pursuits than the illusory search for gold. These were people of vision who saw not only that Helena was surrounded by a virtual ring of mineral treasure but that her location was a strategic one for transportation radiating throughout the new Territory.

As indicated earlier, Helena has been Montana's capital city since 1875, when it wrested the honor from Virginia City. After Montana became the 41st state in 1889, however, Helena soon found herself in contention with others. In an election in 1892, six towns were in the running. Helena and Anaconda emerged as the top winners but since neither had a clear majority, a run-off election was held in 1894. Now came the big fight, one still remembered for chicanery and fraud. When the votes were counted, despite cries of foul from Anaconda, Helena was declared the winner.

Along with its Victorian charm and importance as a financial, political and transportation center, Helena has experienced adversity as well, much of it caused by the whims of nature. Fires, fed by the natural chimney effects of winding Last Chance Gulch, brought the town almost to its knees a number of times in the 1860s and 1870s. The threat was not mitigated until more solid buildings replaced the original wooden structures and a reasonably well-equipped fire department was developed after the city incorporated in 1881.

In later years, the forces of nature have again plagued Helena, notably earthquakes, the most recent and devastating being those of October, 1935, when hundreds of buildings were destroyed and four people were killed.

Through it all, however, Helena has rebuilt and prospered and today is a delightful city of mansions, museums and people who are so proud of their city and its past that they are always eager to share it with visitors. Never has this pride shown more clearly than in 1989, as Helena people join with their fellow Montanans in celebrating the Centennial year of statehood.

Experience it here, in Helena, and all across the state as the past, present and future of the Treasure State are celebrated in special and meaningful ways.

Helena Centennial Year Events

1989

- April 6 - June 25 — Centennial Quilt Exhibition (Montana Historical Society)
- April 21 - May 14 — Youth Art Electrum (Holter Museum of Art)
- May - November — Little Red Schoolhouse Centennial Exhibit
- May 12 — Vigilante Parade (Last Chance Gulch)
- May 15 - 20 — National Historic Preservation Week
- June 2 - 3 — Governor's Cup Centennial Marathon
- June 3 - 4 — The Montana Centennial Musical Extravaganza (Civic Center)
- June 22 - 25 — Montana Traditional Jazz Festival
- June 23 - 24 — 15th Annual Downtown Art Mart
- July 2, 3, 4 — Fourth of July, Community Celebration
 - All Nations Celebration and Church Service
 - Centennial Park Dedication and Kid's Fun Day (Memorial and Centennial Parks)
- July 3 - 4 — Montana Centennial Wagon Train/Parade
- July 4 — Fireworks Display
- July 12 - August 13 — Helena: A Century of Art and Artifacts, Centennial Exhibit (Holter Museum of Art)
- July 22 - 23 — Governor's Cup Horse Show (Lewis and Clark Fairgrounds)
- July 26 - 30 — Last Chance Fair and Stampede (Lewis and Clark Fairgrounds)
- September 18 - 24 — Native American Centennial Pow-Wow Week
- August 17 - 20 — Western Rendezvous of Art (Holter Museum of Art)
- September 28 - October 1 — Adult Art Electrum XVIII (Holter Museum of Art)
- October — William A. Clark Collection (Montana Historical Society)
- October 14 — Military and Civilian Ball (Civic Center)
- November 8 — State Birthday Celebrations (Capitol Building)
 - Re-enactment of Statehood Transmittal
 - Centennial Ball
 - Centennial Fireworks

1990

- January — Helena Area Chamber of Commerce Annual Banquet
- February 10 — Governor's Cup Annual Sled Dog Race (starts downtown)
- February 17 — Chocolate Festival (Civic Center)
- March — Governor's Prayer Breakfast
- April 22 — Helena Train Expo (Civic Center)

HIGHLIGHTS

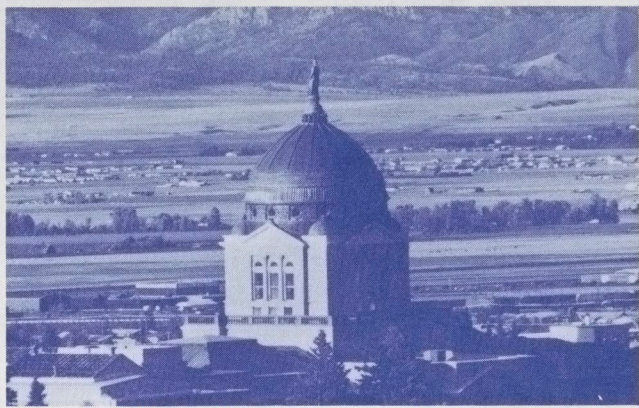


Photo by Craig Sharpe



Archie Bray Foundation 2915 Country Club Avenue — 443-3502

Praised as one of "the foremost schools of pottery in America" by a Smithsonian Institute official. Pottery classes are offered to the general public, and many beautiful display pieces are for sale. Gallery hours — Mon. thru Sat. 10 a.m.-5 p.m., or by appointment. Closed Sundays.

Benton Avenue Cemetery Benton Avenue near Carroll College

Dating back to the gold rush days of 1864, this cemetery holds the secrets of Helena's beginnings. Visit the monuments of territorial legislators, gunslingers, vigilantes and pioneers all resting in this common place.

Canyon Ferry Lake

Once a site for gold rush activity, today it's famous for fishing, camping, boating, and many other recreational activities.

Carroll College

1501 N. Benton Ave. — 442-3450

Montana's largest independent college with an enrollment of 1,500 students. Carroll is a four-year liberal arts college offering over 30 bachelor degrees.

Civic Center

340 Neill Ave.

The Helena Civic Center, home of many city offices, was originally built by the Algeria Shrine Temple. The uniqueness of the Moorish architecture adds variety to the skyline of Helena.

Centennial Waterslide Park — 443-5777

Located at the Broadwater Hot Springs just six minutes from downtown Helena on Highway 12 West, this park includes plenty of room for swimming, picnicing, sliding and relaxing. Separate facilities available for adults. All day passes \$8.00. Open daily noon to dark, Memorial Day through Labor Day.

Downtown Pedestrian Mall

442-9869

Historic Downtown Helena District, the Queen City's exciting center of business, entertainment and cultural activity. Visit Last Chance Gulch, our "main street," for a fun filled day of tours, exhibits, special events, fine food and recreation. We're rich in history and alive in the arts.

Frontier Town

Highway 12 W., McDonald Pass — 442-4560

An authentic reproduction of a western town constructed by John Quigley. See the largest one piece bar in the world, country stores, chapel, and much more. While there dine in the western dining room and enjoy a 75 mile view from atop the continental divide. Open daily, April thru October, 9 a.m.-10 p.m.

Grand Street Theatre

Park & Lawrence — 443-3311

Our national award winning community theatre provides Helena with a wide variety of Broadway musicals, comedies and dramas. Top quality entertainment, provided by local talent, for the whole family.



Gates of the Mountains 1-15 North — 16 Miles North of Helena — 458-5241

Take a relaxing guided boat tour and view the Gates of the Mountains, named by William Clark of the Lewis & Clark Expedition. Stop for a picnic or simply watch for the wildlife that lives along the Missouri River. Tours from Memorial Day thru September. Adults \$5.50, Senior Citizens, \$4.50. Children ages 4-16, \$2.50, 3 and under, free. Tour times are shown on brochures available at Helena Area Chamber. Special charter trips available.



Gold Collection

350 N. Last Chance Gulch — 447-2000

The Northwest's largest gold collection is displayed at the Norwest Bank in downtown Helena. It contains nuggets, wire gold, leaf and dust gold, and gold coins of various weights and sizes. Exhibit open during banking hours: M-Th: 9:30-4:00; F: 9:30-5:00.

Great Divide Ski Area — 449-3746

Montana's fastest growing ski area. The Great Divide is located 22 miles northwest of Helena above Marysville. A base to summit chairlift and a free handle-tow for beginners serve over 200 acres of skiable terrain. Complete with ski rentals, ski school, restaurant, saloon, sun-deck and snow-making equipment. Open seasonally, Wednesday thru Sunday and all Holidays.

Helena Brewers Professional Baseball — 449-7616

Helena is proud to host the Helena Brewers baseball team of the Pioneer League. Enjoy a professional game during a pleasant summer evening at Kindrick Legion Field, Main Street.

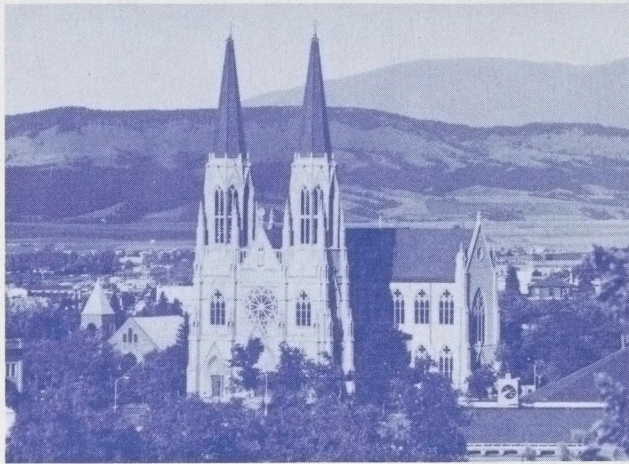


Photo by Craig Sharpe

Helena National Forest — 449-5201

Hike, camp, fish, or hunt when in season. For maps of the area, contact the Forest Service located in the Federal Building on Park Ave.

Helena Symphony Society — 442-1860

The Helena area boasts its own symphony orchestra and chorale of 150 community volunteers. The Helena Symphony Society presents six concerts a year, featuring well-known guest artists and covering a wide range of musical styles, from classical and Christmas, to pops and premieres of new works.

The Holter Museum of Art

12 East Lawrence Street — 442-6400

Located in downtown Helena, Montana, the Holter is a Visual Arts Facility presenting exhibits of paintings, sculpture, photography, ceramics, weaving, and other art forms. Hours are Tuesday thru Saturday, 10 a.m.-5 p.m., Sunday Noon-5 p.m. Closed Mondays and major holidays. FREE ADMISSION.

Last Chance Tour Train

Roberts and 6th Avenue — 442-6880

Take an hour condensed, but relaxed tour of Helena on the tour train. Tours depart from the Historical Society Museum. Departure times for the tour train are 8:30, 9:30, 10:30, 11:30, 1:30, 2:30, 3:30 & 4:30. Adults, \$3. Children 12 and under, \$2. Available June 1 thru Labor Day.

Marysville (Ghost Town)

Thomas Cruse discovered gold here in 1876 and sold it for \$1,500,000. Once a thriving town, it is now a true ghost town with empty old structures reflecting yesterday.



Photo by Craig Sharpe

Montana Historical Society Museum

225 North Roberts Street — 444-4794

Incorporated in 1865 during the gold rush, by the First Territorial Legislature, it now houses the Mackay Gallery containing C.M. Russell paintings and illustrations, the F.J. Haynes Photographer Exhibit and a temporary exhibit housing western art. The Montana Homeland Exhibit, opened in 1988, reflects Montana's history from pre-history to the Modern Era. Summer hours: 8 a.m.-6 p.m. Weekends and holidays, 9 a.m.-5 p.m. After Labor Day: Closed Holidays and Weekends. Group tours are available. Library open: Monday-Friday, 8 a.m.-5 p.m. Closed Weekends and Holidays

Original Governor's Mansion

304 North Ewing — 444-4794

Built in 1888 during Helena's hey-day, by William Chessman, this grand home was purchased by the state in 1913 for Montana's governors. The mansion is furnished as it might have been during the administration of Governor Stewart (1913-1921). Free tours hourly Tuesday thru Saturday: 12 p.m.-5:00 p.m. Tours by appointment: January thru March.

Reeder's Alley

South Park Ave. — 449-2552

These picturesque red brick buildings were constructed in the 1870's by Louie Reeder, a Philadelphia brick mason. They are the last complete block of historic buildings in Helena. Built to house the old miners and muleskinners of the gulch, Reeder's Alley now houses shops, restaurants, and a free visitor center. Great fun for the whole family. Restaurant and shops open year round.

St. Helena Cathedral

509 North Warren Street — 442-5825

The Cathedral is modeled after the Votive Church in Vienna, Austria, and a cathedral in Cologne, Germany. The Cathedral has irreplaceable stained glass windows, beautiful paintings, and an imported white marble altar. Visitors welcome 9 a.m. to 5 p.m. daily. Group tours by appointment, a small stipend is requested.

Second Story Cinema/Helena Film Society/ Myrna Loy Center for the Media and the Performing Arts

9 Placer Street — 443-0287

Across from Bank of Montana, Helena's own unique showcase for classic and contemporary, American and Foreign films. Sponsors of the Helena Series for the Performing Arts and numerous special events. The Society is currently renovating the old county jail into the Myrna Loy Center for the Media and the Performing Arts.

Shope Paintings & Statue of "Boy with a Leaking Boot"

Last Chance Gulch & 6th Ave.

At the First Bank see the statue "Boy with a Leaking Boot" which was originally located in the front of the Broadwater Natatorium. While there, also view the paintings of Ervin "Shorty" Shope, one of Montana's outstanding artists.

State Capitol

1301 6th Avenue — 444-4794

View Charles M. Russell's famed mural "Lewis and Clark Meeting Indians at Ross Hole." Self guided tour information available in the Capitol Rotunda. Summer tours available on the hour. Monday-Saturday, 10 a.m.-5 p.m.; Sunday, 11 a.m.-4 p.m.

pertinent tidbits

COURTESY OF THE HELENA CHAMBER OF COMMERCE

Population

Lewis & Clark County	50,100
Helena Proper (9 sq. miles)	24,800
Helena Trade Area (35 mile radius)	61,500

Elevation: 4,157 feet above sea level

Transportation

Delta Airlines/Sky West Airlines	442-9998
	1-800-227-6105
Horizon Airlines	442-0930
	1-800-547-9308
Northwest Airlin Airlines	443-6400
	1-800-225-2525
Capital City Bus Terminal	442-5860
Dial-A-Ride Bus	442-9333
Old Trapper Taxi	449-5525

HOTELS AND MOTELS

Aladdin's Coach House Motor Inns	
Coach House Downtown	442-6080
Coach House East	443-2300
Best Western Colonial Inn	443-2100
Day's Inns	442-3280
Holter Lake Lodge	1-235-4331
Imperial 400 Motor Inn	442-0600
Jorgenson's Holiday Motel	442-1770
Lampighter Motel	442-9200
Park Plaza Hotel	443-2200
Sanders Helena's Bed & Breakfast	442-3309
Shilo Inn	442-0320
Super 8 Motel	443-2450
Upcountry Inn	442-1909

CAMPGROUNDS

Branding Iron	443-9730
Helena KOA	458-5110
Kim's Marina & Resort	475-3723
Lewis & Clark County Fairgrounds	442-1098
Silo's Campground	1-266-3100

MOST FREQUENTLY USED TELEPHONE NUMBERS

Helena Area Chamber of Commerce	442-4120
Montana Power Company	442-4610
U S WEST Communications	449-8000
Helena Schools	442-5773
Independent Record (daily news)	442-7190
St. Peter's Hospital	442-2480
Helena Regional Airport	442-2821
Police	442-3231
Sheriff	442-7880
Highway Patrol	444-7000
	1-800-525-5555
Fire Department	442-5241
Ambulance	442-3123

CENTURY LITHOGRAPHERS

HELENA AREA
CHAMBER OF
COMMERCE
201 East Lyndale Avenue
Helena, Montana 59601



YOUR PERSONAL GUIDE TO HELENA MONTANA and surrounding areas INCLUDING MAP

and pertinent tidbits
Published by the
Helena Area Chamber of Commerce

201 East Lyndale
Helena, Montana 59601
Tel. 406/442-4120



1901 Prospect Avenue
Helena, Montana 59601
406/442-5232

3060 N. Montana Avenue
Helena, Montana 59601
406/442-2800

The Nature
Conservancy



Protecting nature. Preserving life.™

nature.org/montana

Kat Imhoff
Montana State Director

The Nature Conservancy
32 South Ewing Street
Helena, MT 59601

Tel (406) 443-0303

Fax (406) 443-8311

kimhoff@tnc.org

100% post-consumer materials



From: Jennie Corley <jcorley@TNC.ORG>
Subject: Oct 7 Book Signing
Date: August 13, 2012 1:41:58 PM PDT
To: "cddoig@comcast.net" <cddoig@comcast.net>
Cc: Kat Imhoff <kimhoff@TNC.ORG>
▶ 4 Attachments, 546 KB

Hi Ivan,

It was nice visiting with you this morning. I spoke with Kat and she said if you would send us a list of names and addresses of the people you'd like to invite to the Oct 7 book signing, we would be happy to mail out invitations. We are planning on mailing to individuals that are on our greater Montana membership mailing list which is about 4500. Combined with the Holter's list and the list from MT Preservation Alliance, it could be a sizable mailing. The Holter is limited to 250, however. Hope this answers your question regarding the invitation list.

I have also attached directions to Kat's house. It is my understanding that you will arrive and stay over at her home on Oct 7.

I will put the itinerary in a formal letter and send that to you in the next day or two.

Thanks, Ivan. Please let me know if you need anything further.

Jennie

Please consider the environment before printing this email

Jennie Corley
Executive Assistant
Montana Trustee Liaison

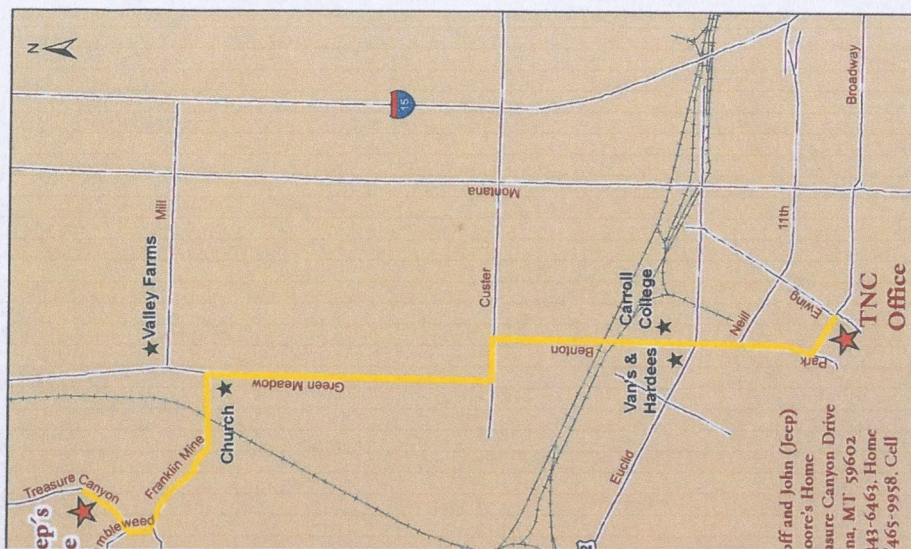
jcorley@tnc.org
(406) 443-0303 (Phone Main)
(406) 443-6734 (Phone Direct)
(406) 443-8311 (Fax)

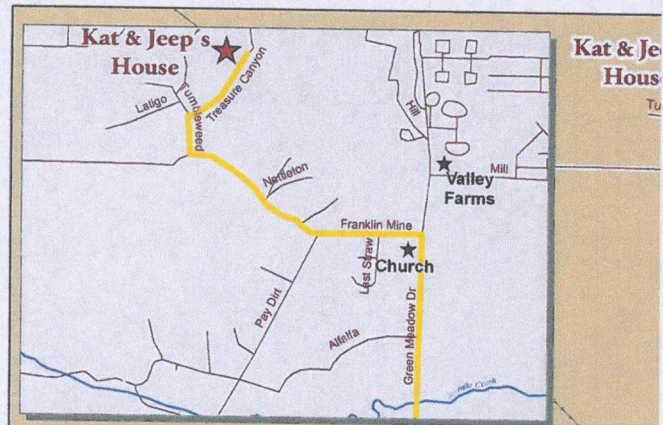
The Nature Conservancy
Montana Field Office

32 S. Ewing St.
Room #220
Helena, MT 59601

The Nature Conservancy 
Protecting nature. Preserving life.™

nature.org





From TNC Office (intersection of South Ewing and Broadway Avenue).

- * Travel Broadway Avenue west to Park Avenue.
- * Turn right (north) onto Park Avenue (name changes to Benton Avenue).
- * Travel Park/Benton Avenue, crossing Euclid (Hwy. 12), past Carroll College, to Custer Avenue (approximately 2 miles from Broadway)
- * Turn left (west) onto Custer Avenue
- * Travel Custer Avenue to Green Meadow Drive (approximately 1/2 mile)
- * Turn right (north) onto Green Meadow Drive to Franklin Mine Road (1.8 mile)
- * Turn left (west) onto Franklin Mine Road to Tumbleweed Drive (about 1.1 mile).
- * Landmark: At Franklin Mine Road, on southwest side of Green Meadow, is a small church with a lighted sign.
- * Turn right (north) onto Tumbleweed Drive to Treasure Canyon Drive, short distance.
- * Turn right onto Treasure Canyon Drive. It's the 2nd house on the left - a bit up the road with metal horse sculpture in the yard.

From I-15 and Lincoln Road exit (traveling south from Great Falls).

- * Turn right (west) onto Lincoln Road to North Montana Avenue (about .4 mile)
- * Turn left (south) onto North Montana Avenue to Sierra Road West (3 miles)
- * Turn right (west) onto Sierra Road to Green Meadow Drive (1.3 miles)
- * Turn left (south) onto Green Meadow Drive to Franklin Mine Road (1.3 miles)
- * Turn right (west) onto Franklin Mine Road to Tumbleweed Drive (1.1 miles)
- * Turn right onto Tumbleweed Drive to Treasure Canyon Drive (.2 mile)
- * Turn right onto Treasure Canyon Drive. It's the 2nd house on the left - a bit up the road with metal horse sculpture in the yard.

Kat & Je
Hous

Kat Imho
M
5528 Tre:
Hele
406/4
406/

From: carol doig <cddoig@comcast.net>
Subject: **Re: invitations for October 7 book signing**
Date: August 29, 2012 8:15:07 AM PDT
To: Kat Imhoff <kimhoff@TNC.ORG>



Hi, Kat.

I've been lagging in suggesting names for the invitation list, so let me just propose a few basic ones you've probably already thought of, and we'll call it good:

Bruce Whittenberg, Montana Historical Society director.

Molly Holz, editor, Montana, The Magazine of Western History.

Butch Larcomb, editor, Montana Magazine and managing editor of the IR.

Marcella Walter, our friend who's coming to dinner, too. 225 Alpine #2A, Helena 59601.

That should cover it. Good news here -- The Bartender's Tale became a national bestseller yesterday.

All best,

Ivan

On Aug 29, 2012, at 6:29 AM, Kat Imhoff wrote:

Good morning Ivan-

I apologize if you sent this already, but can you remind me of the folks that you would like to be sure we invited to the October 7th event?

The invitation looks great and we are excited.

Kat

Sent from my iPad

From: carol doig <cddoig@comcast.net>
Subject: **Re: hello from MT**
Date: August 16, 2012 3:22:57 PM PDT
To: "Chere Jiusto" <chere@preservemontana.org>



Yup. Books came and thanks a lot. They're lovely.

On Clay Scott: Have him phone me pronto at 206-542-6658 so he and I can try to work out a date for the interview he wants. I'm really busy the first couple of weeks of September, but I'll try to squeeze in in if it's not too complicated.

All best. See you in Helena.

Ivan

On Aug 15, 2012, at 3:50 PM, Chere Jiusto wrote:

Hello Ivan!

I hope that Charlotte's books have reached you by now, I sent them out in two boxes late last week. Thick volumes, I think I got my money's worth with the flat rate on priority shipping. If no books have arrived, please let me know, I have the numbers to track them.

And re: the homesteading piece for MT Public Radio, Clay Scott, of Mountain West Voices Radio, informs me that he has a broadcast week reserved for the program in early October on both Public Radio stations. Since it would be too early for that deadline to record you here in Helena, he suggested if you are amenable, that he could arrange for a sound tech to visit you at home or office, and record an interview with him.

Please let me know if this might work, I am sure he would make it as convenient as possible. Meantime, I think you would truly enjoy visiting the Mountain West Voices Radio website - it is a growing collection with a myriad of authentic, unpolished Montana voices. Our homestead piece will be a half hour, the collections on-line are just 5 minutes but each is just wonderful. Give a listen! mountainwestvoices.org

Here is Clay's input, please let me know if this might work out and thank you again Ivan for all your kindness to us,
Chere

Hi Chere,

I belong to an organization called AIR (Association of Independents in Radio), and there are a few members in Seattle who could do the 'tape sync,' as it's called. I think \$150 is pretty standard for the sound engineer to, in this case, go to Ivan's house to record him while I conduct the interview over the phone.

If Ivan were able to make time for this, it should probably be in the first two weeks of September. In the meantime, I'm trying to find some other voices for the piece. (All your ideas are great, by the way. I've

August 14, 2012

Ivan Doig
17277 15th Ave. NW
Seattle, WA 98117-3846

Dear Ivan,

We are thrilled to be partnering with the Holter Museum and the Montana Preservation Alliance to host a book signing event for your latest book "The Bartender's Tale" on the evening of October 7th at the Holter Museum in Helena, Montana.

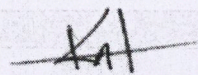
Your itinerary for the evening is as follows:

Sunday, October 7, 2012	
4:00 pm	Cocktail Hour Ivan Doig to begin book signing
4:30 pm	Introduction by Kat Imhoff Kat Imhoff will introduce Ivan Doig, thank Holter Museum, and thank Montana Preservation Alliance
4:45 pm	Ivan Doig to describe writing the book and do some selected readings and have a question and answer period
5:15 pm	Holter Museum to "close" the event Ivan Doig will stay and sign books
6:00 pm	Event ends

Kat and her husband, Jeep will be hosting you and your wife at their home the evening of October 7th. If you could let us know if you plan to get to their house pre-event, that would be super. We will plan on getting you to the event by 4:00 p.m. They are also planning a light dinner at their home with some of our Montana trustees after the event.

We look forward to this upcoming event and learning more about your great book. Please let me know if you need anything further.

Thanks,



Kat Imhoff
State Director

From: carol doig <cddoig@comcast.net>
Subject: Re: Looking forward to seeing you in Montana
Date: September 26, 2012 1:03:12 PM PDT
To: Kat Imhoff <kimhoff@TNC.ORG>



Kat, hi. Good news on the turnout: we're looking forward to the event. We'll be at your place after lunch, between noon and 1 p.m., if that's OK with you, to put our feet up briefly before performing.

Best. Ivan and Carol

On Sep 26, 2012, at 11:55 AM, Kat Imhoff wrote:

Dear Carol and Ivan,

I am about to be on the road until October 6th but will be reachable via email or cell phone if you do need to touch base. I wanted to let you know that we have 144 RSVPs for the book signing/talk on the 7th and 28 folks for a "small" private dinner that evening. A super turn out for Helena!

I will look for your arrival sometime (afternoon?) on Sunday. Jennie said she gave you directions to the house but if you can let me know if you need lunch that day or whatever, that would be great.

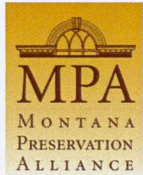
We are very much looking forward to seeing you in Helena!

Kat

Cell: 406 465 9958

The Nature Conservancy 
Protecting nature. Preserving life.*

32 South Ewing Street ~ Helena, MT 59601



 **HOLTER**
MUSEUM of ART
12 E. LAWRENCE ST. HELENA, MT 59601
406-442-6400 WWW.HOLTERMUSEUM.ORG

**Bringing stories, art, and
community together...
Meet the author!**

Non-Profit Org.
U.S. Postage
PAID
AlphaGraphics
Bozeman

We are pleased to invite our members to a reading
and signing by Ivan Doig, author and native
Montanan, of his new book, *The Bartender's Tale*.

Date: Sunday ~ October 7, 2012

Time: 4-6 p.m.

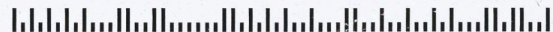
Place: The Holter Museum of Art
12 E. Lawrence Street ~ Helena, Montana

Space is limited (no kidding), so please reserve a seat today.

Call Kim Patterson at 406.495.2260 or
e-mail kim_patterson@tnc.org to RSVP.

7/1478

Marcella Walter
2225 Alpine Drive Apartment 2A
Helena, MT 59601-5834



IVAN DOIG



THE
BARTENDER'S
TALE



a novel



Ivan Doig RSVP List

1

Check-In	RSVP	From	ALPHA_NAME	PRIMARY CONTACT	SECONDARY CONTACT	CITY	STATE
	1	Holter	Alfredson, Karma				
	1	Holter	Alfredson, Noreen				
	2	MPA	Ambrose	Hugh & Andrea Ambrose		Helena	MT
	2	TNC	Archambault, Bette Jo Ms.	Bette Jo Archambault		Helena	MT
	1	MPA	Bailey	Annie Bailey		Bozeman	MT
	2	TNC	Balcken, Jeff	Jeff Balcken		Helena	MT
	2	TNC	Barton, Drake Mr. & Lloyd, Kathy Ms.	Drake Barton	Kathy Lloyd	Helena	MT
	4	TNC Staff	Bauer, Brad and family				
	1		Bennett, Marilyn				
	4	TNC Staff	Birkland, Nathan				
	2	Holter	Bishop, Don and Joan				
	2	Holter	Blank	Tamara Blank		Helena	MT
	2	TNC	Board, Mait and John C.	Mait Board		Helena	MT
	1	Holter	Bonifas, Bard				
	1	Holter	Bonifas, Jesse				
	2	Holter	Borwn, Mr. and Mrs. Ray				
	1	Holter/MPA	Bramer and Flink	Kathryn Bramer and John Flink		Helena	MT
	2		Brodsky, Ann				
	2	MPA Staff	Brown, Christine				
	2	TNC/MPA	Caldwell, Charlotte Ms. & Schutz, Jeffr	Jeffrey Schutz	Charlotte Caldwell	Clyde Park	MT
	1	Holter	Carlson, Linda				
	3	Holter	Cech	John, Victoria, and Isaiah Cech		Clancy	MT
	2	Holter	Cohea, Terry and guest				
	2	TNC Staff	Corley, Jennie and Kim				
	2	TNC	Cronholm, John & Carla	John and Carla Cronholm		Helena	MT
	1	TNC Staff	Crouse, Bebe				
	1	Holter	Davis, Donna				
	1	TNC Staff	Davis, J.D.				
	1	TNC/MPA	Dean, Patricia Ms.	Patricia Dean		Helena	MT

Ivan Doig RSVP List

2

	3		DiBianchi, Cory				
	2	Holter	Duffy, Mr. & Mrs. Dick				
	2	Holter	Eidel	Marcia Eidel		Helena	MT
	1	TNC	Eischeid, Sam	Sam Eischeid		Ringling	MT
	2		Ellis, Helen and Kris Ellis				
	4		Ely, Kathleen				
	2	TNC	Eubank, Donna	Donna Eubank		Helena	MT
	2	TNC	Feldner, Tim Mr.	Tim Feldner		Helena	MT
	2	TNC	Fisher, J. (Joanne and Richard)	J. Fisher		Great Falls	MT
	2	TNC/MPA	Frazer, Eliza H. Ms. & Hood, Barry G.	Eliza H. Frazer	Barry G. Hood	Helena	MT
	2	TNC	Garrigues, Martha Ms.	Martha Garrigues		Great Falls	MT
	2	Holter	Gilbert, Hannah and guest				
	0	TNC	Granzow, Robert L. Mr. & Linda Mrs.	Robert and Linda Granzow		Polson	MT
	2	TNC	Harris, Barbara Ms.	Barbara Harris		Missoula	MT
	1	Holter	Hart, Judy				
	1	TNC	Haxby, Martha Ms.	Martha Haxby		Whitehall	MT
	2	Holter	Hibbard, Mary and Terrill				
	2	TNC/MPA	Hibbard, Scott G. Mr. & Gretchen Mrs.	Mr. and Mrs. Scott G. Hibbard		Helena	MT
	2	TNC	Hill, Richard Mr. & Joyce Mrs.	Richard and Joyce Hill		Helena	MT
	1		Hudnutt, Elizabeth				
	cancel	TNC	Hulett, Raela A. & Tait, Courtney A.	Raela A. Hulett	Courtney A. Tait	Havre	MT
	2	Holter	Hunter & Johnson	Peg Hunter & Patrick Johnson		Helena	MT
	1	Holter	Hunter, Dave				
	1	Kat/MPA	Hunter, Peter	Peter Hunter		Helena	MT
	1	TNC staff	Imhoff, Kat				
	1	TNC Staff	James, Alison				
	1	w/ Linda Silverberg	Johnson, Mary				
	2	MPA Staff	Juisto, Chere				
	1	MPA	Juneau	Denise Juneau		Helena	MT
	2	MPA	Kaufmann, Christine/Kempt, Pat	Christine Kaufmann		Helena	MT

Ivan Doig RSVP List

	1	Holter	Keim, Pat and Linda				
	1	Holter	Kelly, Janet				
	1	w/ Molly Person	Kendall, Nona Jane				
	1	w/ Molly Person	Kendall, Russ				
	2	TNC/Holter	King, Denise	Denise King and L.M. Minich		Jefferson Cty	MT
	0	TNC	Kirsch, Gretchen	Gretchen Kirsch		Whitefish	MT
	2		Lauer, Norb				
	2	TNC	Levin, Randi	Randi Levin		Clancy	MT
	3	TNC	Lewis, James A.	James A. Lewis		Livingston	MT
	4		Lovell, Elise				
	0	TNC	Lowery, Bette A. Ms.	B.A. Lowery		Missoula	MT
	1		Luke, Ruth				
	2	Holter/MPA	Mainwaring and Benedict	Scott Mainwaring and Susan Benedict		Helena	MT
	1	TNC Staff	Martin, Brian				
	1	Holter	McCaffrey, Helen				
	1	w/ Molly Person	McKay, Tavie				
	2	TNC	Miller, Cathy Ms.	Cathy Miller		Ennis	MT
	2	TNC	Moore, Rick Mr. & Sylvia Mrs.	Mr. and Mrs. Rick Moore		Clancy	MT
	1	TNC Staff	Moser, Gail				
	8	Holter	Mountain West Bank				
	2	TNC	Murphy, Mark J. Mr. & Lauren	Lauren and Mark Murphy		Helena	MT
	3		Nelson, Isabel				
	2	TNC/MPA	Nicholson, Alan Mr. & Nancy Mrs.	Alan and Nancy Nicholson		Helena	MT
	1	Holter	O'Neil, Michael				
	2	Holter	Obbie	Jim and Glenna Obbie		Clancy	MT
	2	TNC	Oconnor, Connie Ms.	Connie Oconnor		Clancy	MT
	2	Holter/MPA	Orr and Dix	Katherine Orr and Randy Dix		Helena	MT
	1	TNC	Osborne, Lucas	Lucas Osborne		Helena	MT
	1	TNC staff	Patterson, Kim				
	1	TNC	Pena, Lisa	Lisa Pena		Helena	MT

Ivan Doig RSVP List

4

	1	TNC	Person, Margaret H. Mrs./Molly	Waldemar and Margaret Person		Great Falls	MT
	2	Holter	Petit, Larry & guest				
	1	MPA	Porte & Dave Carr	Sanna Porte & Dave Carr		Helena	MT
	3	TNC/Holter	Putsch, Bob Mr. & Poo Mrs.	Poo and Bob Putsch		Canyon Creek	MT
	2	Holter	Quinlan, Madalyn and Brian				
	1	TNC	Randall, Mary Ellen Ms.	Mary Ellen Randall		Helena	MT
	1	Holter	Ridgeway, Barb				
	1	TNC	Roe, Sandra	Sandra Roe		Ovando	MT
	3	MPA	Rostad	Lee Rostad		Helena	MT
	2	TNC	Ruedisili, Neal Mr. & Mary Mrs.	Mr. and Mrs. Neal Ruedisili		Helena	MT
	1	TNC Staff	Sattler, Deb				
	1	TNC	Saxton, Berma	Berma Saxton		Helena	MT
	1		Schweyen, Judy				
	1	TNC	Silverberg, Thorne P. & Linda	Thorne and Linda Silverberg		Clancy	MT
	1	Holter	Smith	C. E. Vicki Smith		Helena	MT
	2	TNC	Snow, Neil Dr.	Dr. Neil Snow		Helena	MT
	1	Holter	Spencer, David				
	1	TNC/MPA/Holter	Speyer, Tim	Tim Speyer		Helena	MT
	1	w/Lisa Pena	Springmeyer				
	1		Stevenson, Ed and Jane				
	4	TNC	Stoner, Dennis & Debbie	Dennis and Debbie Stoner		Bozeman	MT
	1	TNC	Stout, Susan E. Mrs.	Mrs. Susan E. Stout		Whitehall	MT
	2	MPA	Strahn	Derek Strahn		Bozeman	MT
	1	Kat/MPA	Sullivan, Amy	Amy Sullivan		Helena	MT
	1		Swisher, Ann				
	2	Holter	Tandy, Dianna & guest				
	2		Taylor, Jack and Kay				
	1	Holter	Thiede	Paula Thiede		Helena	MT
	4	TNC	Vedovatti, Phil	Phil Vedovatti		Butte	MT
	1	TNC/MPA	Vogt, Martha Ms. & Greene, Jim Mr.	Martha Vogt	Jim Greene	Helena	MT

Ivan Doig RSVP List

	2	Holter	Volkerez, Mr. and Mrs. Willem				
	cancel	Holter	Vrooman and Peterson	Nicholas Vrooman and Linda Peterson		Helena	MT
	1	TNC/MPA	Walter, Marcella Ms.	Marcella Walter		Helena	MT
	2	Holter	Warner, Tim and Heather Margolis				
	1	TNC/MPA/Holter	Whearty, Niki	Niki Whearty & James Reynolds		Helena	MT
	1	TNC	Wolff, Susan J. Dr.	Dr. Susan J. Wolff		Great Falls	MT
	1	Holter/MPA	Woo, Margaret	Margaret L. Woo		Helena	MT
	2	TNC	Youmans, Clif Mr. & Heidi Mrs.	Clif and Heidi Youmans		Helena	MT
	2	TNC	Zanella, Virginia	Virginia Zanella		Bozeman	MT
	211						



Dear Ivan and Carol,

On behalf of the TNC Montana Chapter, thank you so much for your on-going and generous support. While the grizzly or bndra swans or Canada lynx will never know that your gift helped protect critical habitat, they can survive and thrive in these landscapes now. Please let us know if you would ever like an on-the-ground tour of what you help make possible. It would be lovely to see you in Montana. With appreciation, ~~and~~



The mission of The Nature Conservancy is to
conserve the lands and waters on which all life depends.

nature.org/montana

Tundra swans winging along the Rocky Mountain Front.

© Dave Hanna

The Nature Conservancy



Protecting nature. Preserving life.™

nature.org/montana



FSC® RECYCLED
Paper
FSC® C051259

RECYCLED
Paper

Kat Imhoff
Montana State Director

32 South Ewing Street
Helena, MT 59601

Tel (406) 443-0303

Fax (406) 443-8311

Cell (406) 465-9958

kimhoff@tnc.org

100% post-consumer materials





Kathleen

Dear Ivan and Carol,

Greetings from very snowy Montana. I wanted to reach out to you in case you might like to have an update on our Chapter activities. I will be in Seattle on March 22 and 23 for some foundation meetings. If you would like to grab a cup of coffee or dinner, it would be lovely to meet you. Yours in conservation,
~~Pat~~

"WINTER DOGWOOD SNOWBALLS"

copyright © Kathe LeSage
Wolf Creek, Montana

LeSage Photographics



*A friendly little company founded in anticipation
of offering photographic images that inspire
recognition and appreciation...an alchemical moment
that creates a warm heart.*

*lesagephotographics@hotmail.com
www.lesagephotographics.com*

AVIS

FOR RESERVATIONS CALL
TOLL FREE IN U.S.A.

1-800-331-1212

24 HOUR ROADSIDE ASSISTANCE
1-800-354-2847

Visit Avis Online at www.avis.com

AVIS RENT A CAR LOCATIONS

Approx.
Miles
From
Bozeman, MT

IDAHO

466	1 Boise	208-383-3350
316	2 Hailey	208-788-2382
200	3 Idaho Falls	208-522-4225
260	4 Pocatello	208-232-3244
372	5 Twin Falls	208-733-5527

MONTANA

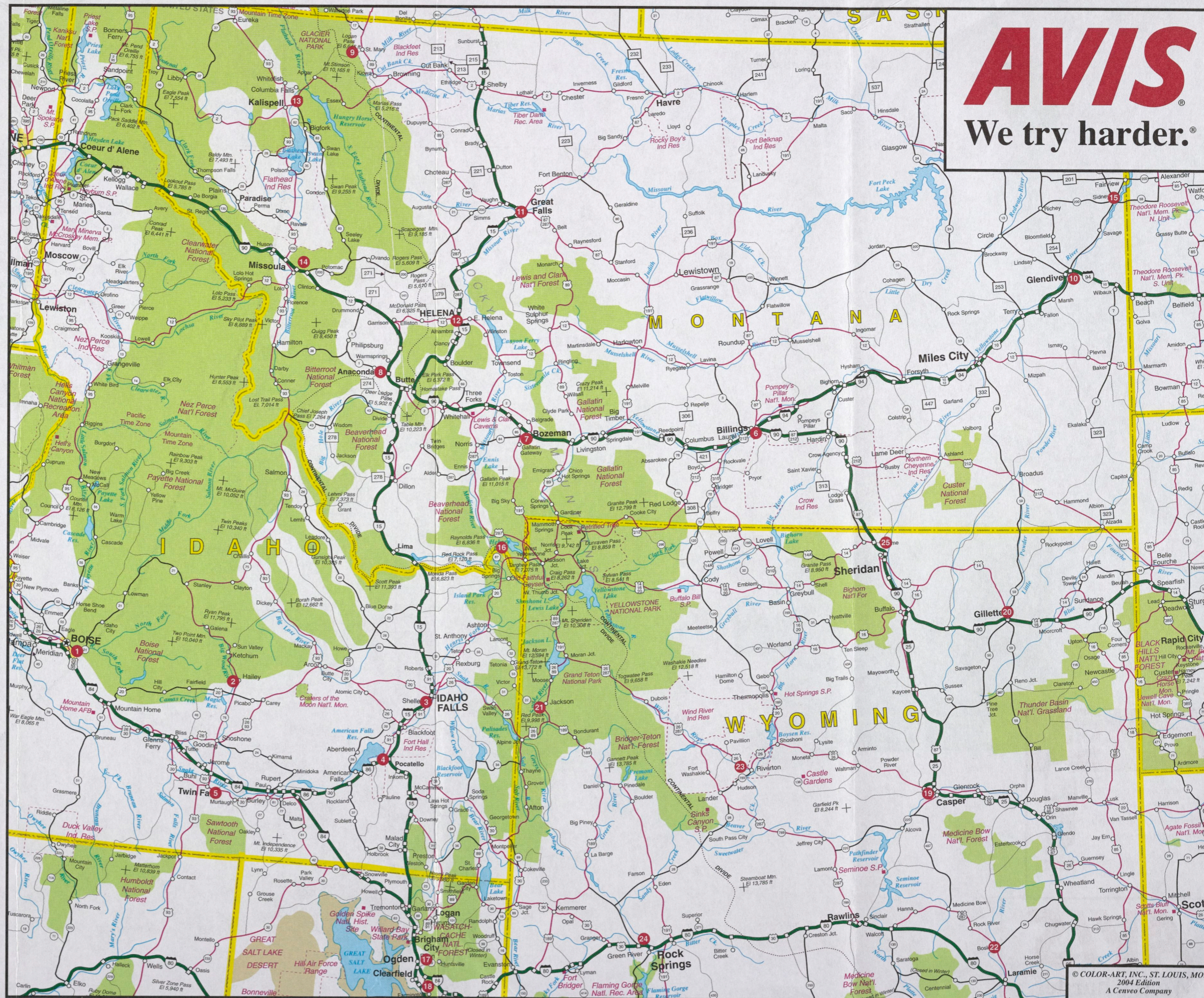
144	6 Billings	406-252-8007
	7 Bozeman	406-388-6414
82	8 Butte	406-494-3131
380	9 Glacier Park (Seasonal)	406-226-9227
364	10 Glendive	406-365-8032
177	11 Great Falls	406-761-7610
95	12 Helena	406-442-4440
291	13 Kalispell	406-257-2727
202	14 Missoula	406-549-4711
447	15 Sydney	406-482-4402
90	16 West Yellowstone (Seasonal)	406-646-7635

UTAH

374	17 Ogden	801-394-5984
415	18 Salt Lake City	801-575-2847

WYOMING

431	19 Casper	307-237-2634
370	20 Gillette	307-682-8588
230	21 Jackson	307-733-3422
416	22 Laramie	307-745-7156
236	23 Riverton	307-856-5052
454	24 Rock Springs	307-362-5007
276	25 Sheridan	307-672-2226



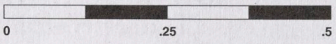
AVIS

We try harder.®

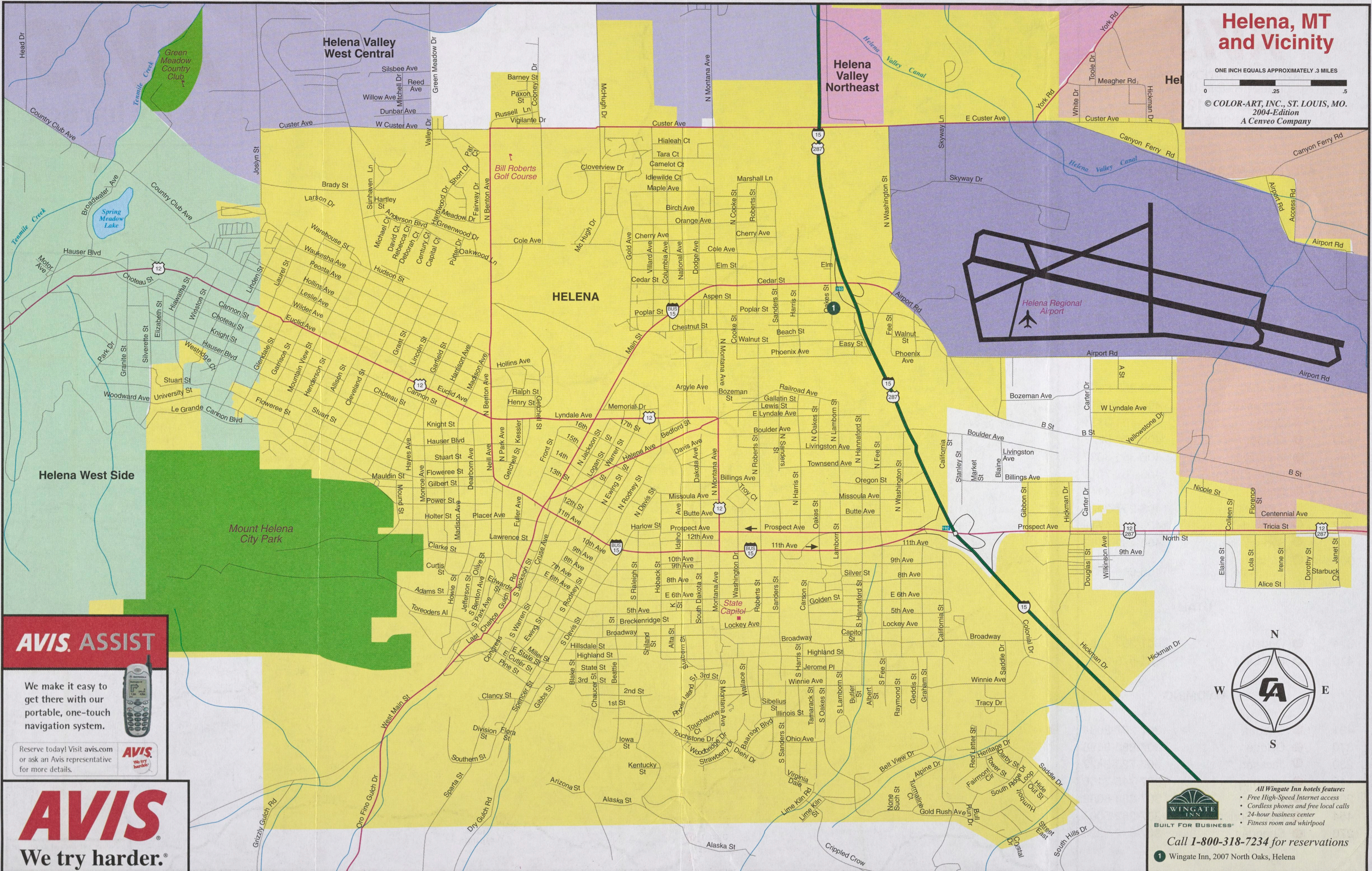
© COLOR-ART, INC., ST. LOUIS, MO.
2004 Edition
A Cenvo Company

Helena, MT and Vicinity

ONE INCH EQUALS APPROXIMATELY .3 MILES



© COLOR-ART, INC., ST. LOUIS, MO.
2004-Edition
A Cenevo Company



AVIS ASSIST

We make it easy to get there with our portable, one-touch navigation system.

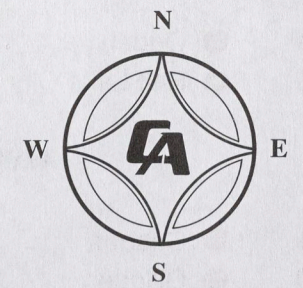


Reserve today! Visit avis.com or ask an Avis representative for more details.



AVIS

We try harder.®



- All Wingate Inn hotels feature:
- Free High-Speed Internet access
 - Cordless phones and free local calls
 - 24-hour business center
 - Fitness room and whirlpool

Call 1-800-318-7234 for reservations

1 Wingate Inn, 2007 North Oaks, Helena

26 Dec. '09

Molly, hi--

I hope you're surviving the winter okay. Marcella tells us it's a big one.

See what you think of this as a blurb for Verlaine. Any problem with it, give me call and we'll tinker.

“With local savvy and the detective skills of a first-rate scholar, Verlaine Stoner McDonald splendidly recreates the ‘Red days’ of radical politics in the Depression-hit farm country of northeasternmost Montana. This extraordinary chapter of Montana history, little-known at best and often deliberately obscured, at last has found its clear true voice.”

--Ivan Doig, author of *Bucking the Sun*

Slip me a couple copies of the book when it comes out, okay? Meanwhile, please pass along my warm congrats to Verlaine.

All best,

Big Sky. Big Land. Big History.
Montana
Historical Society

*Historic Preservation
Museum
Outreach & Interpretation
Publications
Research Center*

December 16, 2009

Ivan Doig
17277 15th Avenue NW
Shoreline, WA 98177

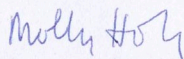
Dear Ivan:

I hope you are having a festive holiday season and that all is going well on your Butte book. Marcella and I walk together every week and so I hear bits of news. Here at the Montana Historical Society we continue to crank away, witness the enclosed *Red Corner* book galleys.

I'm delighted that you're willing to blurb the book. I do hope you like it. It might be a bit rough yet – Verlaine is giving it a polish before we send it off to the proofreader and indexer. (I'm so close to it now that I can't really tell.) At any rate, the plan is to send the book off to the printer by the end of January. I would like to have your comments by January 20, if possible.

Thanks again, and enjoy the read.

Sincerely,



Molly Holz
Editor, Montana Historical Society Press

225 North Roberts Street
P.O. Box 201201
Helena, MT 59620-1201
(406) 444-2694
(406) 444-2696 FAX
montanahistoricalsociety.org



Registration deadline is
**Sept. 8 for this year's final
 Art of Leadership workshop,
 Sept. 26-27 in Great Falls.**
 Download registration forms at
 art.mt.gov or e-mail
 cholt@montana.com.



July/August 2006

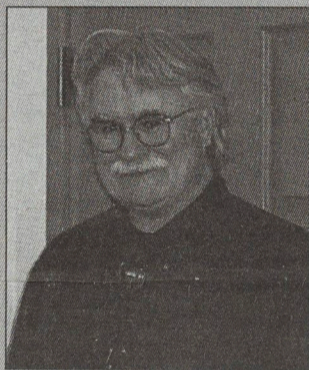
■ Montana - The Land of Creativity

Providing information to all Montanans through funding by the National Endowment for the Arts and the State of Montana

NEWS OF NOTE

**Historical Society
 hires new director**

Richard Sims, currently director of the Sharlot Hall Museum in Prescott, AZ, was recently named the new director of the Montana Historical Society.



Richard Sims

Lee Rostad of Martinsdale, president of the society's board of trustees, said the board spent several months

reviewing more than 35 applicants from across the country to be head of the MHS as it deals with important issues over the next several years, including development of a new Montana History Center.

"We look forward to working with Richard as he leads the society in the development of this tremendously important project," Rostad said.

Sims, 59, has been a museum professional since 1979. At Sharlot Hall Museum, he oversaw a state institution on a four-acre complex with several modern and historic buildings and a staff of 27.

See Historical Society on page 2

**Judy Blunt wins
 Guggenheim award**

Judy Blunt, author of the 2002 memoir "Breaking Clean," has won a coveted Guggenheim Fellowship Award.



Judy Blunt

Guggenheim Fellows are appointed on the basis of distinguished achievement in the past and exceptional promise for future accomplishment. Blunt, an associate professor in The University of Montana Department of English, is the first faculty member in UM's Creative Writing Program to receive a Guggenheim Award since Richard Hugo in 1970.

The award, which averaged \$38,000 last year, will allow Blunt to take a sabbatical during spring 2007. She will spend the time working on a book of essays about strength and storytelling among women in the West.

See Guggenheim on page 2

**Allen Foundation grant helps MSIP
 continue building arts participation**

By Kristi Niemeyer

In an interview three years ago in *State of the Arts*, Joel Jahnke laid out the groundwork for Montana Shakespeare in the Parks' participation in the Montana Arts Council's Building Arts Participation (BAP) program, funded by the Wallace Foundation:

"By working more closely with selected tour coordinators and by giving them more resources, we can build audiences and establish teams who have more of a vested interest in what we're doing," said Jahnke in 2003. "And by sharing what works, hopefully we can grow somewhat exponentially."

Those words have proven prophetic. "The whole Building Arts Participation process for us was quite life-changing," he says now. "It changed the way we do business here."

The BAP grant of \$34,000 and the work that it required of MSIP also helped pave the way for a new grant of \$45,000 from the Paul G. Al-

len Family Foundation. The new funding of \$15,000 a year for three years allows the company to "continue to explore" the audience-building techniques that it began with BAP. "The case we made with them was that we'd begun all this work and didn't want to stop it."

The Bozeman-based theatre company stages free productions of Shakespeare's plays in more than 50 towns in Montana and Wyoming each summer. Building audiences "was not a priority," says Jahnke. "Because our shows are free, there was no direct correlation between audience size and income from ticket sales." And for many years, the audience had grown steadily, so why worry?

However, during the past decade, the number of people filling parks and outdoor amphitheatres to see

the productions had started to level off or diminish. If audiences didn't grow, neither would the donations that help MSIP keep its performances affordable to the communities and nonprofit organizations around the state that pay for the tour.

The BAP process helped the company look at the way in which it related to audiences and tour coordinators. "For a long time, we viewed tour coordinators less as partners than as presenters of what we produced," says Jahnke. "There wasn't much of a team relationship."

Although he'd met most of the coordinators during two sabbaticals from his teaching job at Montana State University, there was no ongoing relationship with the

people on the ground, who brought MSIP to town each summer.

In communities large and small, those coordinators were often "a one-man band," who raised money and handled logistics and publicity on their own.

One of the company's first moves under the BAP program was to hire a tour coordinator liaison - a role that has



Billings audience enjoys a summer performance by Montana Shakespeare in the Parks.

(Photo by Braden Moran)

now expanded to community relations director. Jahnke's wife, Kathy, who fills that position, brought a wealth of business expertise to the post, having managed a string of Maurices clothing stores in the Midwest before moving to Montana.

"She's been able to couple that business attitude with what we do artistically," says Jahnke. She began by cultivating personal relationships with tour coordinators, making on-site visits to communities that host the productions, and trying to discern what made each site unique and how best to help each town promote the performance.

See Shakespeare on page 9

Applications available for Cultural Trust Grants

Applications are currently available for Cultural and Aesthetic Project grants, which are made every two years from Montana's Cultural Trust Fund.

The application deadline is Aug. 1 and the grant period runs from July 1, 2007 to June 30, 2009. Applications are available from the Montana Arts Council at www.art.mt.gov or by calling 406-444-6449.

The applications must be for cultural and aesthetic projects, including but not limited to the visual, performing, literary and media arts, history, archaeology, folklore, archives, collections, research, historic preservation and the construction or renovation of cultural facilities.

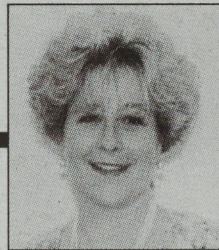
Applications may be made for:

- Special Projects, which include events of limited duration, planned expansions of organizations and projects that generate new sources of revenue (a separate application for project requests of less than \$4,500 is available to both volunteer groups or those that have a paid staff);
- Operational Support, which is available to organizations that meet specific criteria; and
- Capital Expenditures, which are for construction or renovation of cultural facilities, historic preservation or the purchase of art or artifacts.

A 16-member citizen's advisory committee will review proposed projects and make funding recommendations to the 2007 Montana Legislature, which will make final decisions on all grants.

Arni's Addendum

Arlynn Fishbaugh, Executive Director
afishbaugh@mt.gov



MAC seeks major funding initiatives

Each spring state agencies formulate their budget requests to the Governor for the next biennium, which will be FY 2008-2009. MAC developed a budget with a set of major initiatives tied to current state priorities in education, economic development and job growth.

The total new funding request is \$1.6 million for the FY 2008-2009 biennium, summarized below. MAC's current general fund appropriation for the FY 2006-2007 biennium is \$782,000.

The first priority for the source of funding for these proposals would be state general fund, but MAC has also proposed an alternative funding mechanism to respond to the frequent refrain, "If the arts council only had a dedicated funding source, it could avoid competing in the general fund arena."

The state budget office has asked us not to go public with the proposed source until the Governor has had time to consider it. We can say that the alternative source that MAC is proposing is not the accommodations tax (bed tax).

During the summer the Governor will be considering all requests from every state agency and creating his final budget this fall for the Legislature.

If you have any opportunity to speak with the Governor during the summer, please reinforce the need for these new budget initiatives. The state's financial picture is positive, and MAC believes that it is a perfect opportunity for the state to finally make an appropriate investment in its funding of the arts. If not now, when?

MAC believes that it is a perfect opportunity for the state to finally make an appropriate investment in its funding of the arts. If not now, when?

Individual Artist Fellowships

Restoration: \$135,003

This would restore and upgrade this valuable program that provides much-needed materials, equipment, research/travel/studio time to enable an artist to pursue new aesthetic directions and techniques. The program was cut during the budgetary dilemmas the followed Sept. 11; this amount would enable MAC to double the number of awards given to artists.

number of awards given to artists.

Arts Education: Helping rural schools meet state arts standards: \$478,035

Arts education has not yet been formally addressed within the

state as part of the new effort to fund education as a whole in Montana.

- There is a lack of qualified arts teachers in the state, and teachers need help meeting the state arts standards. This program will provide mentors to teachers who have minimal arts training and assist school districts that are unable to hire arts teachers.

- The arts organizations in the state provide the primary hands-on professional arts experiences for children. This funding will improve education by extending this outreach.

- The program also will have a special focus on the arts as part of Indian Education for All.

The Arts Mean Business: At home, on the farm and in town: \$240,035

These plans have been developed with extensive input during the last two years and include:

- Expansion of the Indian Art Buying program on reservations beyond the state parks system and other economic development efforts with the tribes.
- Creation of a liaison staff position to coordinate and move projects along between the arts council, Department of Commerce and the Governor's Office of Economic Development.
- Development of a website clearing house for arts business resources.
- Providing training in marketing, business, web and legal issues for artists.
- Development of a juried art program, "Montana Masters," to increase sales of fine handcraft products through the Made in Montana program; and development of other markets, along with attendant promotion.

Information Technology

Stabilization and Improvement: \$188,035

MAC's information technology infrastructure is in major need of updating and improvement in order to solve inefficiency problems that have escalated during the last 10 years, creating what is now an untenable situation. MAC suffers from out-of-date software, a database that is not functioning as it should, and insufficient staffing to get the problem solved (our IT person has two other jobs; all three used to be full-time positions.)

We have limped along for nine years and this problem is impacting every aspect of our agency negatively. We cannot move to e-grants, nor can we implement the economic development programs down the pike without this budgetary solution.

Repay loan to the Cultural and Aesthetics Trust made in FY 2006: \$500,000

This would repay the loan made from the Cultural Trust by the Legislature to fund the Malta Dinosaur Museum in the last days of the last legislative session. It is a one-time-only appropriation.

Cultural and Aesthetic Trust Shortfall: \$94,000.

There may be a shortfall in Cultural Trust earnings for the end of FY 2007. The amount above would be a one-time-only appropriation to prevent having to make any grant cuts in the last half of FY 2007.

The total request is \$1.04 million for the biennium in ongoing costs, plus \$594,000 in one-time-only funds in FY08, which equals \$1.6 million.

We will be pursuing these initiatives with gusto, and need everyone's support as we work to build the state's reputation as "Montana... The Land of Creativity."

Relief fund helps artists rebuild

Americans for the Arts Emergency Relief Fund, www.americansforthearts.org, was established to provide timely financial assistance to victims of a major disaster for the purpose of helping them rebuild the arts in their community. Visit the website for details.

— From Montana Nonprofit Association Grants Insider

Historical Society director (from page 1)

Before that he was director of the Museum of Western Colorado for five years and operations manager for the Museum of Northern Arizona in Flagstaff for the previous 10 years.

"We are thrilled about the breadth and depth of experience and knowledge Richard brings to the Montana Historical Society at one of the most exciting times in the history of our institution," said trustee Tom Foor, who chaired the selection committee.

Sims begins his new job in mid-July when he moves to Helena with his wife, Debra, whom he describes as a parks and recreation worker and dedicated mountain biker.

"I am ready to lead the work of further establishing MHS as Montana's museum and as Montana's heritage keeper and protector," Sims said. "Expanded facilities and increased public service are central to that mission."

Sims said he has worked closely with pioneer families, ranchers, miners and Native

American tribes throughout his career and is looking forward to establishing close working relationships with all of the people of Montana.

Sims is a Kentucky native and U.S. Army veteran. He earned bachelor's degree in anthropology from the University of Oregon, a master's in English from Northern Arizona University, and a Museum Management Certificate from the University of Colorado.

Sims has consulted with museums in Australia, London and Mexico and been a keynote speaker for museum conferences from St. George, Utah, to Sydney, Australia.

The couple's only child, Lander, is a senior at Northern Arizona University, where he's majoring in anthropology.

Sims is proud of growing up on a farm in Kentucky, but says he has been in the West since 1971 and considers himself a westerner in outlook and attitude.

Guggenheim Fellowship (from page 1)

Blunt is among 187 winners of 2006 Guggenheim Fellowships selected from nearly 3,000 applicants in 78 different fields, from the creative arts to the natural sciences. The John Simon Guggenheim Memorial Foundation will award \$7.5 million in this year's competition, its 82nd.

Her critically acclaimed collection of essays, *Breaking Clean*, described Blunt's struggle for independence during more than 30 years on isolated wheat and cattle ranches in northeastern Montana. The third generation of a home-

steading family, Blunt grew up more than 50 miles from the small Hi-Line town of Malta and married an area rancher.

She left behind the challenges and rewards of the only life she knew in 1986, moving to Missoula with her three children to study at UM.

Breaking Clean won the PEN/Jerard Fund Award and the Whiting Writers' Award and was a *New York Times* Notable Book.

"It's daunting to be put in the league of other Guggenheim fellows," Blunt told a *Missoulian* reporter. "I'm tap dancing with joy."

STATE OF THE ARTS

State of the Arts is published six times a year by the Montana Arts Council and produced by *Lively Times*.

State of the Arts welcomes submissions of photographs, press releases and newsworthy information from individual artists and arts organizations. Please check with the Montana Arts Council for reprint permission.

Deadline: The deadline for submissions is July 25, 2006, for the September/October 2006 issue. Send items to: Montana Arts Council, PO Box 202201, Helena, MT 59620-2201; phone 406-444-6430, fax 406-444-6548 or e-mail mac@mt.gov.

Subscriptions: *State of the Arts* is available free of charge to Montana residents as a public service of the Montana Arts Council. To subscribe, please call 406-444-6430, or update or sign-up online at www.art.mt.gov. Out-of-state subscriptions at \$15 per year are welcome — mail your check to the Montana Arts Council, PO Box 202201, Helena, MT 59620.

16. **C. W. CANNON, 303 Bdwy.—1868.** (HV 10 AV 10) Gothic Revival typical of mid-18th century American small homes—Grant Wood style. Note Gothic windows, high pitched roof and high narrow windows.

17. **CONSISTORY SHRINE, 15 N. Jackson—1915.** Site of famous Ming Opera House which was built in 1880. Designed after temple at Karnak, Egypt. Scottish Rite Emblem on top. Architects—Haire and Carsley.

18. **POWER AND TRACTION BLDG., 17 N. Jackson.** Helena was first locality to have electric lights, 1882. This fine rough granite building with handsome entrance was built for the power plant to supply power for street cars and for lighting.

19. **ATLAS BLOCK, 7-9 Last Chance Gulch.** (AV 10) Sculpture of Atlas bearing a tall shaft surmounted by an urn shows interesting picturesque ornamentation.

20. **SECURITIES BLDG., 101 N. Last Chance Gulch—1886.** (HV 10 AV 10) Best example of Romansque Revival Architecture. Round stone arches, stone columns, capitals, frieze and cornice. Note thumb print between 1st floor arches, terra cotta fish downspout.

21. **GOODKIND BLDG., 139 N. Last Chance Gulch—1884.** (HV 5 AV 9) Built by Bach, Cory and Co. Grocery and was later sold to Goodkind Bros., wholesale liquor dealers and suppliers, when 6th Ave was Price St.

22. **POWER BLOCK, 58, 60, 62 N. Last Chance Gulch—1889.** (HV 9 AV 10) An old landmark. Best example of rugged Romansque type of architecture. Interior of heavy timber. State Senate met here in 1893.

23. **FIRST NATIONAL BANK, 6th and Last Chance Gulch.** In lobby are some fine paintings of early Montana days by Shorty Shope.

24. **NORTHWESTERN BANK, 350 N. Last Chance Gulch.** On the site of old Haymarket Square. In lobby is famous gold collection and fine ceramic mural by Rudy Autio.

25. **IRON FRONT, 413 N. Last Chance Gulch—1887.** Except for the windows and the galvanized iron cornice, the front is constructed entirely from cast-iron components.

26. **MONTANA CLUB, Montana Club Bldg., 6th & Fuller.** A distinguished private club founded in 1885. Rebuilt in 1905 to replace a similar structure which had burned. Cass Gilbert, architect.

27. **DIAMOND BLOCK, 40-52 W. 6th Ave.—1889.** (HV 2 AV 10) Triangle shaped building of rough cut granite embellished with copper faced bay windows, small balconies, and three centered arches. Note decorative diamond-shaped mirrors on face.

28. **UNITED STATES POST OFFICE, COURT HOUSE & FEDERAL OFFICE BLDG., 316 N. Park—1904.** This Renaissance style of architecture is of a later period. Note fine wrought iron lanterns at entrance. Of granite and sandstone with marble in the large window arches.

29. **LEWIS AND CLARK PUBLIC LIBRARY, 325 N. Park—1901.** This was first constructed as the Unitarian Church. After the earthquake in 1935 the library moved here. Has two fine DeCamp paintings.

A. CONFEDERATE MEMORIAL FOUNTAIN, Hill Park. A loving tribute to Confederate soldiers by the Daughters of the Confederacy of Montana. 1916.

30. **HELENA CIVIC CENTER, 339 Neill Ave.—1920.** The Algeria Shrine Temple built this Moorish style landmark building. After it was damaged by the 1935 earthquake the city purchased it and restored it for the Civic Center. City offices, auditorium (2,500 seats), gallery-lounge-ballroom.

31. **GREAT NORTHERN DEPOT BUILDING, 110 Neill Ave.** Before earthquake destruction this had tall clock tower with a 30 ft. clock on each of the four sides. Now, the Montana Chamber of Commerce office.

32. **ST. HELENA CATHEDRAL, Lawrence & Warren.** Begun 1908 and dedicated 1914. Patterned after the beautiful Votive Cathedral in Vienna, Austria. The twin Gothic spires rise 230 ft. Interior has fine stained glass windows from Bavaria. Audio tours.

33. **COL. WILBUR F. SANDERS HOME, 328 N. Ewing St.—1875.** Home of prominent lawyer who contributed immensely to the establishment of law and order in this state. U.S. Senator in 1889 and president of Montana Historical Society for 30 years.

34. **FORMER GOVERNOR'S MANSION, 304 N. Ewing—1884.** Fine brick and terra cotta residence designed by Cass Gilbert, nationally known architect. Home of nine governors. Tours.

35. **JOSEPH K. TOOLE HOME, 203 N. Ewing.** Home of Montana's first governor after statehood. Now Brondel Hall.

36. **STATE CAPITOL—1902.** Built of Montana sandstone, with heroic bronze statue of "Goddess of Liberty" (or "Columbia") topping the copper dome. Charles Russell's largest painting in House of Representatives, depicting Lewis and Clark meeting the Indians at Ross's Hole.

37. **MONTANA HISTORICAL SOCIETY, Veterans & Pioneer Memorial Bldg., 225 N. Roberts.** This building houses the Montana Historical Society which was established in 1865. It is the State Museum, library and archives, home of the "Montana Magazine of Western History", and the Charles Russell Gallery.

38. **CARROLL COLLEGE—Founded in 1909** by Bishop John Patrick Carroll. Cornerstone laid by William Howard Taft. A Catholic College offering a full liberal arts curriculum to 1,400 students. Seven major buildings on a 54 acre campus.

39. **BENTON AVENUE CEMETERY—1864.** Helena's oldest cemetery with tombstones dating back to Helena's first residents—Vigilantes, cavalymen, and territorial legislators.

40. **LE GRAND CANNON BLVD.—From west end of Holter St. to Broadwater.** A memorial drive along the north slope of Mt. Helena—in memory of the son of Charles W. Cannon. Formerly location of early ditch, which brought water to the miners.

41. **MT. HELENA—A mountain to climb at our back door.** A city park with trails to the top. North slope trail passes Devil's Kitchen (cave first named McKinley Cave) known to have served as a shelter to the Indians and early prospectors. About a 2 hour climb to top.

B. FIRST SPECIAL SERVICE FORCE MEMORIAL—to the joint American-Canadian forces which were activated at Ft. Wm. Henry Harrison, July, 1942. Erected by surviving members in memory of their comrades.

42. **343 CLARK ST.—Home of U. S. Senator Thomas J. Walsh,** famous for uncovering the Teapot Dome Scandal.

43. **400 DEARBORN AVE.—Home of cattleman Daniel E. Kaufman** for whom Charles Russell painted "Waiting for a Chinook."

44. **418 W. LAWRENCE ST.—Known as the Stadler Home.** Built by Mr. Kaufman's close friend and partner of the OH Ranch. Note carriage house they shared.

45. **427 W. LAWRENCE ST.—Llewellyn L. Callaway,** a prominent historian, attorney, and early Chief Justice of the Montana Supreme Court lived here.

46. **520 HARRISON AVE.—Henry Sieben,** pioneer stockman built this home in 1898. He crossed the plains in '64, rode the open range and built up two sheep ranches.

47. **531 POWER ST.—Built by W. E. Cox,** real estate merchant who built \$500,000 worth of houses in '80's.

48. **600 HARRISON AVE.—Senator T. C. Power** built this home in 1891. He was an entrepreneur who ran riverboats on the Missouri, stage lines between Helena and Ft. Benton. Now the residence of the Catholic Bishop.

49. **702 and 706 HARRISON AVE.—Victorian homes** built circa 1890 of local rough hewn granite and decorative shingles.

50. **529 FLOWERREE ST.—This Tudor style home** built c. 1888 shows the use of the Gothic arch and the crossed timbers. Home of Wm. Nichols of Yellowstone Park Co.

51. **724 HARRISON AVE.—Mr. A. C. Johnson,** bank president, built this home in 1896. It is now the home of the Episcopal Bishop.

52. **802 MADISON AVE.—Built for A. J. Seligman,** the son of a wealthy New York City family. He came here to manage the family mine at Marysville.

53. **725 MADISON AVE.—Built in 1887.** Three generations of the J. S. M. Neill family have lived in this rose brick house which has a large grand hall, and gazebo in yard.

54. **720 MADISON AVE.—Built by Governor Hauser** in 1875 and now the residence of former Governor Tim Babcock.

55. **702 MADISON AVE.—The home of another prominent pioneer rancher,** Mr. John Boardman. Note beautiful oak door and carriage house in rear.

56. **642 MADISON AVE.—Prominent pioneers** who lived here were C. J. McNamara (who owned the IX Ranch) and Aubrey Holter, a prominent hardware merchant.

57. **642 DEARBORN AVE.—Known as the Charles Power** home. An entrepreneur who built business blocks and was active in transportation, mining, and banking.

58. **804 DEARBORN AVE.—Mr. Conrad Kohrs,** one of the great cattle barons of the U.S., lived here. He entertained Teddy Roosevelt and other notables at this home.

59. **812 MADISON AVE.—Built in 1883** by Mr. H. H. Child, who managed the Marysville mine for Mr. Seligman.

C. THOMAS FRANCIS MEAGHER MEMORIAL—by Gaudins. In memory of Acting Territorial Governor who mysteriously disappeared from a riverboat at Ft. Benton.

AV—Architectural Value

HV—Historic Value



EUCLID AVENUE (HIWAY 12 WEST) LEADS TO FT. WM. HENRY HARRISON, EARLY DAY CAVALRY POST, NOW A VETERANS ADMINISTRATION HOSPITAL; THE CONTINENTAL DIVIDE & FRONTIER TOWN SIT ATOP MCDONALD PASS ABOUT TWELVE MILES WEST OF HELENA.



MADISON AVE. - LOOKING SOUTH



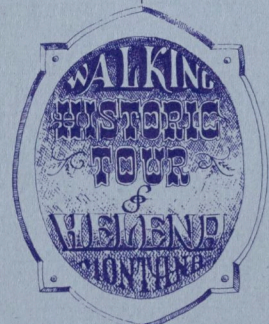
A GENERAL VIEW OF HELENA FROM FIRE TOWER HILL - 1887



VIEW OF LAST CHANCE GULCH FROM BROADWAY - 1887

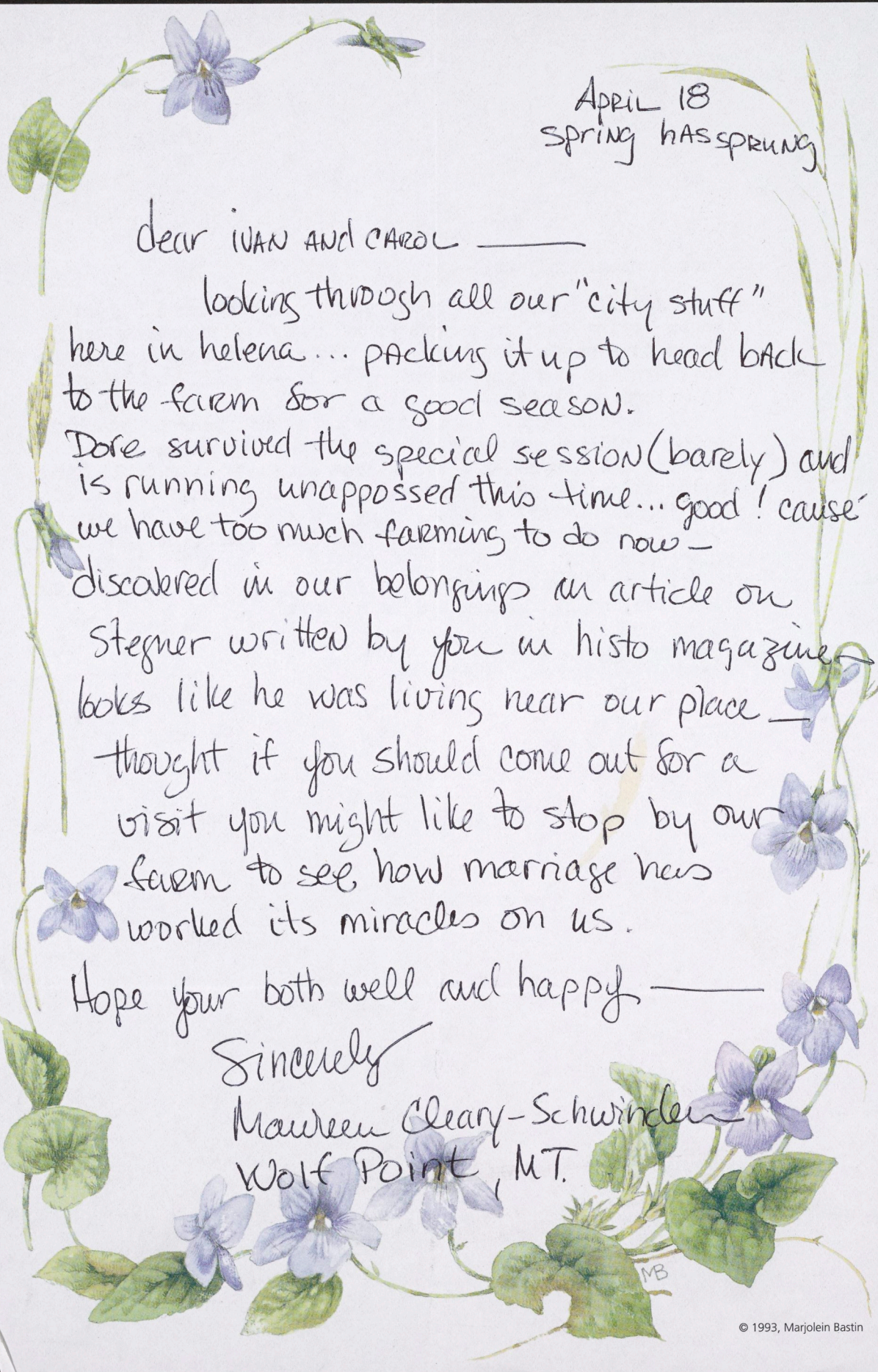
LEGEND

- INDICATES HISTORIC SITE
- INDICATES MONUMENTS OR MEMORIALS TO GROUPS OR INDIVIDUALS.
- INDICATES HOMES OR BUILDINGS OF HISTORIC VALUE.
- ★ INDICATES HOMES OR BUILDINGS HAVING ARCHITECTURAL VALUE.
- ☆ INDICATES HOMES OR BUILDINGS OF BOTH HISTORIC & ARCHITECTURAL VALUE.



PREPARED BY
Jean Baucus and BOB Morgan
for
The Lewis & Clark County
BICENTENNIAL COMMITTEE
1976

1. **MALL**—Last Chance Gulch of the 1870's. Welded metal sculpture of men sluicing gold by Lyndon Pomeroy. One of the original street cars and a few of the very early business blocks. (Refer to No. 3.)
2. **OLD FIRE TOWER**—1874. (HV 10 AV 8) This "Guardian of the Gulch" still stands on Watchtower Hill. The first wardens sounded the alarm by striking a huge triangle. Later this was replaced by a 2,200 pound bell.
3. **SITE OF DISCOVERY OF GOLD**—July 1864. Four miners who felt it was their "last chance" to make it found "colors" in this little gulch at this site. \$20 million in gold was mined in this area in the next 20 years.
4. **SITE OF OLD CHINA TOWN**—Cor. State and Last Chance Gulch. The Chinese helped build the railroads, cultivated truck gardens and operated their own grocery stores. Under this street was a long tunnel where they smoked opium.
5. **THE PIONEER CABIN**—S. Park—1865. (HV 10) This cabin of hand-hewn logs has been authentically restored to show a typical miner's residence of the "gold rush" days.
6. **REEDER'S ALLEY**—1860's-1880's. These were the first permanent dwellings in Helena, replacing the flimsy frame and canvas shacks which had been first put up by the gold miners. The bricks were shipped in from Charlie Russell's father's brick works in St. Louis. There are now art and crafts shops where the artisans can be seen at work. The Stone House is now a restaurant.
7. **HELENA END OF BENTON ROAD**—1860's. Before railroads, most of the supplies were freighted by riverboat to Ft. Benton. From that point these goods were hauled by freight wagons over the Benton Road to Helena.
8. **B. H. TATEM HOUSE, 440 S. Park**—1860's. (HV 9 AV 9) Early home of rough granite. The brick arched windows, wide eaved hip roof and decorative balcony give it a Mediterranean feeling. Mr. Tatem had an iron foundry on the north side of the house.
9. **EMIL KLUGE HOUSE, 540 W. Main**—1870's (HV 4 AV 10) Sometimes called "The Maverick," this unique house with a lower story of hand-hewn logs and an upper story of crossed timbers filled in with brick is of great architectural importance. Only two or three of this purely Medieval style remain in the U.S.
10. **MASONIC TEMPLE, 100 Bdwy.**—1885. (HV 9 AV 9) Hub of activity of Helena development in '80's. Used for serious lodge meetings as well as for banquets, and funerals. Note ornamental cornice and round arches.
11. **PARCHEN BLOCK, 10 Bdwy.**—1886. (HV 9 AV 10) Fascinating example of eclectic Victorian architecture, using cast iron, elaborate terra cotta and 3-storied arched openings.
12. **DENVER BLOCK, 103-129 Bdwy.**—1890. (HV 5 AV 8) Apartment building partly Romansque in design was built by Peter Winne, builder-architect.
13. **U.S. ASSAY OFFICE, 206 Bdwy.**—1875. (HV 10 AV 7) Over \$2 million in gold passed through here annually. Son of President Harrison was assayer here.
14. **COURT HOUSE, entire block**—1888. (HV 10 AV 10) Handsome massive granite building served as Territorial Capitol and State Capitol for a time.
15. **JAIL, 15 N. Ewing**—1887. County jail one of the most ornate building in the U.S. used for such purpose. Note handsome door.



April 18
Spring has sprung

Dear Ivan and Carol —

looking through all our "city stuff"
here in Helena... packing it up to head back
to the farm for a good season.

Dore survived the special session (barely) and
is running unapposed this time... good! cause
we have too much farming to do now —

discovered in our belongings an article on
Stegner written by you in histo magazine —
looks like he was living near our place —

thought if you should come out for a
visit you might like to stop by our
farm to see how marriage has
worked its miracles on us.

Hope you both well and happy. —

Sincerely

Maureen Cleary-Schwinder
Wolf Point, MT.

24 April '94

Dear Maureen and Dore--

Appreciated Maureen's note, which was timely; I'd just begun trying to plan a Fort Peck/Plentywood research trip later this year. Right now, it looks as if we'd appreciate an overnight with you around Sept. 12--or will you be back in Helena by then?

All is well here. Carol's having a good year of teaching at her college--students are pretty serious these days, bearing out the q-&a I heard from somebody at a publishing house the other day. Question: what's the status symbol of the '90s? Answer: a job. On my end of things, I'm busier than I want to be on this big Fort Peck novel, but am getting there with it.

So, here's hoping we can see you in the Wolf Point country; meantime, happy farming and being married.

all best,



NONA KEELER
Administrative Assistant
Department of Institutional
Advancement

(406) 447-4491
Fax – **(406) 447-4511**
nkeeler@carroll.edu



CARROLL COLLEGE
1601 N. Benton Avenue
Helena, Montana 59601
www.carroll.edu



NANCY W. LEE
Executive Director for Advancement

406-447-4454
Fax: 406-447-4511
Cell: 406-459-8479
nlee@carroll.edu

CARROLL COLLEGE
1601 N. Benton Avenue
Helena, MT 59625-0002
www.carroll.edu

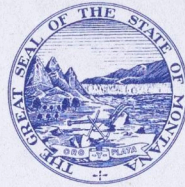
MT photog of the Ringling shots we have & now leader of trips into "Doig country":

Jack Taylor
508 Holter
Helena 59601

(406)442-9667

OFFICE OF THE GOVERNOR
STATE OF MONTANA

BRIAN SCHWEITZER
GOVERNOR



JOHN BOHLINGER
LT. GOVERNOR

April 9, 2007

Dr. Ivan Doig
17277 15th Avenue NW
Seattle, WA 98177-3846

Dear Ivan:

I am writing to invite you to a gathering of the Northwest Chapter of the Montana Ambassadors on May 15th. Montana is on the move, with record economic expansion and business recruitment, and I look forward to sharing with you and the Seattle business community Montana's many business opportunities, as well as discussing Montana's tremendous potential for developing "clean & green" energy for consumption in the Northwest.

Also, as the first in a series of Ambassadors events that will highlight specific regions of Montana, we will be joined by the Economic Development team of Butte-Silver Bow as well as the management team of SeaCast, a Seattle company that has recently expanded its operations into Butte. They will discuss their experience and why Montana is a good expansion alternative for Seattle area businesses.

Please join us for an evening of networking with fellow Montanans and "friends of Montana" who share a professional and personal interest in keeping up to date on the great state of Montana.

Date: May 15th, 2007
Time: 6:30pm – 9:00pm
Place: Columbia Tower Club, Columbia Center, 701 Fifth Ave
For more information, contact Todd Kenck 206.947.9406 or todd@kenck.com.

I look forward to seeing you in Seattle.

Sincerely,

A handwritten signature in blue ink, appearing to be "B. Schweitzer".

BRIAN SCHWEITZER
Governor

ic

About Montana Ambassadors: The Montana Ambassadors is a volunteer, not-for-profit organization of leaders in business, education, and the professions with a common dedication to living and doing business in Montana and furthering the best interests of the state, who serve at the pleasure of the Governor. The Northwest Chapter of the Montana Ambassadors was the first chapter established outside of the state and is run by passionate Montana immigrants located in the Seattle area.

14 April 2007

Brian Schweitzer
Office of the Governor
State Capitol, PO Box 200801
Helena MT 59620-0801

Dear Governor Schweitzer--

Carol and I are going to have to take a raincheck (never that hard to do in Seattle) on the invite to join with the Montana Ambassadors in the May 15th shindig. We very much appreciate your keeping us in mind, and hope some other occasion will give us a chance to get together. What the heck, come by our place sometime, too! Incidentally, I have a highly incipient dab of Montana boost to report to you: the movie rights to my latest novel, *The Whistling Season*, have been optioned by guys who actually seem to have some money and experience. We shall see.

All best wishes from this household, which still has a teeshirt around here that reads *Honorary Montanan*, quite the way Carol and I think of ourselves.

Sincerely,

11 May 2009

Nona Keeler
Administrative Assistant
Department of Institutional Advancement
Carroll College
1601 N. Benton Ave.
Helena MT 59601

Dear Nona--

Carol and I are successfully home, after our terrifically fine time at Carroll commencement. We thank you for your part in handling the logistics, and please pass along our gratitude to Nancy Lee for all her good work on our behalf. I'm passing along the receipts for our trip expenses that Dr. Trebon told me would be picked up, which fortunately are just one meal and airport parking, totaling \$105.

Best wishes,



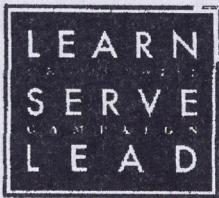
**2009 Commencement Schedule
Commencement and Opening of Carroll College's Centennial Year**

Friday, May 8, 2009

3:30-4:30 pm	History Book Release & Signing – <i>Bold Minds and Blessed Hands</i> written by Robert Swartout, Professor of History. Unveiling <i>Reason Through the Light of Faith</i> Centennial painting and print signing by the artist Robert Morgan	Tent Outside St. Al's
6:00 to 10:00 pm	Centennial Jubilee Dinner – Honorees and their guests, and special guests are invited to the Centennial opening dinner	Campus Center

Saturday, May 9, 2009

9:30 am	Baccalaureate Mass – pick-up robes in Brondel Center (basement) then line up outside Cathedral and process with graduates. Fr. David O'Connell, President of Catholic University in Washington, DC will preach at the mass. Pictures in front of Cathedral following Mass. Return robes to Brondel Center	Cathedral of St. Helena <i>Reserved seating for guests</i>
11:00am-1:30pm	A luncheon for honorees and guests and board members	Campus Center Lobby -- Hoff Kavanagh Room
1:30pm	Line up -- pick-up robe in hospitality room (in PE Center Lobby). Honorees and board members will process to the stage following the faculty.	PE Center
2:00pm	Commencement Return robe to hospitality room.	PE Center <i>Reserved seating for guests</i>
5:00 – 7:00 pm	Reception hosted by Dr. Earl Heller, '58, at his historic T.C. Power residence for Golden graduates, honorees and guests, and board members	600 Harrison (corner of Power and Harrison)
7:00 pm	President Trebon and his wife Scottie extend an invitation to his home for dessert and coffee.	425 Gilbert Street, Helena



CARROLL COLLEGE

FAX COVER SHEET

To: Ivan Doig – (206) 542-6658

From: Nona Keeler – (406) 447-4511
Carroll College

Date: April 21, 2009

of Pages (including cover sheet)

Good Morning Mr. Doig,

Attached you will find copies of the following:

- Thank you letter from Dr. Trebon
- Airline reservations
- Hotel reservations
- 2009 Commencement Itinerary
- Map of Carroll's campus

You are invited to attend any or all activities. Please let me know which you would like to participate in.

Is it possible to get the names of any guests (other than Carol) you'd like to bring to Mass and/or Commencement so that we can make them feel at home? We have room for 2 guests at Mass and up to 6 for Commencement.

We will provide transportation for you while you're here, unless you're more comfortable renting a car. Please let me know what works best for you.

Please don't hesitate to let me know if you have any questions or need any assistance.

Thanks so much,

Nona
nkeeler@carroll.edu

"You must be the change you wish to see in the world." Mahatma Ghandi



Office of the President

April 1, 2009

Mr. Ivan Doig
17277 15th Avenue, N.W.
Shoreline, WA 98177

Dear Mr. Doig:

On behalf of Carroll College and its Board of Trustees, I thank you for accepting the invitation to receive an honorary doctorate at the College's commencement ceremony this May 9, 2009. As you know, this is Carroll's centennial year, the celebration of which will formally begin at Commencement 2009. With this historic milestone in mind, we carefully selected you and our other distinguished honorees to symbolize the historic significance of this event. Further, your presence and your wisdom shared at this ceremony will have a tremendous impact on our students, faculty, staff and the many others in attendance.

The schedule of events for Carroll's centennial commencement features several events. The key activities are Baccalaureate Mass, 10 a.m. at the Cathedral of St. Helena, you are invited to participate in this service if you wish; and commencement, 2 p.m. in the Carroll College health & physical education center on Benton Avenue. Your honorary degree will be conferred during the commencement ceremony. After conferral of the honor, you will be invited to offer a brief response of approximately two to three minutes in length, if you desire.

Coordinating commencement events and travel arrangements are Nancy Lee and Nona Keeler; their business cards are enclosed. Within the next week, you will receive a detailed itinerary. Please feel free to call if you have questions.

I look forward to seeing you and Carol at the graduation ceremonies.

Sincerely,

A handwritten signature in cursive script, appearing to read "Thomas J. Trebon".

Thomas J. Trebon, Ph.D.
President



Letter Of Confirmation

March 23, 2009

Ivan Doig
1601 N. Benton Avenue
Helena MT 59625

Dear Ivan Doig,

Thank you for buying a travel insurance plan from Access America!

Please make sure you read this *letter of confirmation*, your enclosed *certificate/policy*, and any other attached documents, including riders or other forms carefully. Because the *certificate/policy* may describe coverage not included in your plan, be sure to look at all of the documents to understand your specific coverage. Contact us immediately if you think there is a mistake in your *letter of confirmation*.

Information about your plan

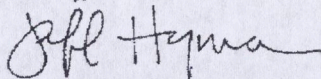
Name of your plan: Air Ticket Protector
Policy identification number: E09056751
Type of order: Gateway

Number of people insured: 2
Who it insures: Ivan Doig, Carol Doig
Date of purchase: March 23, 2009
Plan effective date: March 24, 2009
Travel dates: May 8, 2009 - May 10, 2009

Total cost: \$37.72
Amount paid: \$37.72

Thanks again for buying a travel insurance plan from Access America.
We wish you a safe and pleasant trip.

Sincerely,



Jeff Hyman
Vice President of Travel Operations



Access America will refund your insurance premium if you cancel your insurance within 10 days of purchase and have not filed a claim or departed on your trip.

To modify your policy or file a claim, please visit www.accessamerica.com.

Please detach the card to the right, fold, and carry with you.

AccessAmerica[™]
Travel Insurance & Assistance

Name: Ivan Doig
Policy No.: E09056751

Emergency Assistance Card

For emergency assistance during your trip call:

1-800-654-1908 1-804-281-5709
(From U.S.) (Collect)

For benefit information call:

1-800-284-8300
(From U.S.)

To modify your policy or file a claim, please visit:

www.accessamerica.com

2805 North Parham Road, Richmond, VA 23294

What Your Plan Includes

Your plan includes the following coverage, up to the limits shown. Please see your certificate/policy for information about how our insurance works.

Benefit	Coverage Limits*
Baggage Coverage	\$200.00*
Baggage Delay Coverage	\$200.00*
Concierge	
24-Hour Hotline Assistance	
Trip Cancellation Protection	\$359.24*
Travel/Trip Delay Coverage	\$200.00*
Trip Interruption Protection	\$359.24*

*USD per person unless noted otherwise

Please Note

- There is a \$500 maximum for all covered dental expenses.
- If you purchased Emergency medical transportation, medical repatriation is limited to \$5,000 per covered person.
- California residents: We are doing business in California as WASC Insurance Agency and our California license # is 0B01400.
- Insurance coverage is provided under a Form No. 101-C-XX-01 or 101-P-XX-01 issued by Jefferson Insurance Company.



Office of the President

April 1, 2009

Mr. Ivan Doig
17277 15th Avenue, N.W.
Shoreline, WA 98177

Dear Mr. Doig:

On behalf of Carroll College and its Board of Trustees, I thank you for accepting the invitation to receive an honorary doctorate at the College's commencement ceremony this May 9, 2009. As you know, this is Carroll's centennial year, the celebration of which will formally begin at Commencement 2009. With this historic milestone in mind, we carefully selected you and our other distinguished honorees to symbolize the historic significance of this event. Further, your presence and your wisdom shared at this ceremony will have a tremendous impact on our students, faculty, staff and the many others in attendance.

The schedule of events for Carroll's centennial commencement features several events. The key activities are Baccalaureate Mass, 10 a.m. at the Cathedral of St. Helena, you are invited to participate in this service if you wish; and commencement, 2 p.m. in the Carroll College health & physical education center on Benton Avenue. Your honorary degree will be conferred during the commencement ceremony. After conferral of the honor, you will be invited to offer a brief response of approximately two to three minutes in length, if you desire.

Coordinating commencement events and travel arrangements are Nancy Lee and Nona Keeler; their business cards are enclosed. Within the next week, you will receive a detailed itinerary. Please feel free to call if you have questions.

I look forward to seeing you and Carol at the graduation ceremonies.

Sincerely,

A handwritten signature in cursive script, appearing to read "Thomas J. Trebon".

Thomas J. Trebon, Ph.D.
President



Time and again, old Helena town, as one of the more poetic of the snoose-chewing ranch hands I worked with as a kid used to call it, this city has been a starting point for me. Those teenage seasons of piling bales or driving a grain truck or herding sheep would bring me here from Ringling or Dupuyer with my summer wages to outfit myself with school clothes. (I never dreamt that one day those would include this kind of regalia.) As my working life became also a writing life, my books often had a beginning in research at the Montana Historical Society here, and before long Helena became one of the neighborhoods of imagination where my fictional characters spent chapters of their lives.

In the initial novel of my trilogy about Montana's first hundred years of statehood, *Dancing at the Rascal Fair*, two young Scotchmen "green as the cheese of the moon," Angus McCaskill and Robert Burns Barclay, alight downtown at the time of statehood, in November, 1889.

In the centennial novel, *Ride With Me*, Mariah Montana, Jick McCaskill is coaxed out of a crying jag about his family's fateful past by one of Helena's icons, Dave Walter, the late great researcher and scholar at the Historical Society, and my great friend.

And finally, in *Prairie Nocturne*, Susan Duff from her house on Highland Street, up past the capitol, looks out on Monte Rathbun down there under the streetlamps of 1924 polishing a rich man's limousine, and in her mind's eye, and mine, across town to the twin spires of the cathedral and beyond, to this historic college.

So, for me it is a magical circle of journey to be here at Carroll on this occasion, in this old town, a starting point not only for me but for the young men and women graduating today. The way-above-average class of 2009, the centennial class, starts the next chapter of its story now, and I'm proud to be a footnote to it. Thank you.

From: carol doig <cddoig@comcast.net>
Subject: Doigs a Comin'
Date: April 22, 2009 3:20:54 PM PDT
To: Marcella Walter <mmsw922@aol.com>



We're not quite on our way, Marcella, but we've just received some details and are sharing them in case you'd agree to be literary escort.

Friday, May 8 Horizon # 2434. Scheduled to arrive Helena at 4:59 p.m .

If you're available to pick us up we'll first check in at the Hampton Suites, and then happily accept your invite to drinks and dinner. (Carroll College will let us rent a car if we need one.)

Saturday, May 9. Morning free.

Noon -- Arrive for lunch at Campus Center lobby, Hoff Kavanagh Room.

1:30 p.m. --Ivan leaves to pick up his robe. Carol and Marcella go to PE Center and find seats.

2 p.m. -- Commencement. We're told this may take a couple of hours.

5ish -- Ivan would like to sit down to dinner before the following receptions. At some point, please check to see how early we could put on the feedbag at the Windbag.

6-6:30 p.m. -- Arrive at reception hosted by Dr. Earl Heller "at the historic T. Power residence."
600 Harrison (corner of Power and Harrison).

7 p.m. -- Dessert and coffee at the home of President Tom Trebon and his wife Scottie.
425 Gilbert St.

Sunday, May 10. Horizon # 2433. Scheduled to depart 8:30 a.m.

We're skipping Friday evening and Saturday morning events. Good thing, too, huh? More later. All's well here.
Fondly, Carol

From: mmsw922@aol.com
Subject: All good news
Date: March 24, 2009 6:09:01 AM PDT
To: cddoig@comcast.net

Carol - and Ivan,

From where I sit, all last evening's news is stupendous!

A couple quick morning thoughts:

I'm remembering how noisy the Windbag is on Friday nights. So I'm thinking simple supper here after you have the chance to take a deep breath and get squared away.

I'm slowly adding to my own liquor collection. (The good gin and bourbon are here, but those don't sound right.) Remind me what you usually travel with - and it will be here. Keeps your luggage lighter!

And if, for all or part of your visit, you'd like my car, it's yours-----or the truck.

What fun!

Love,

Marcella

The Average US Credit Score is 692. [See Yours in Just 2 Easy Steps!](#)

I emailed
- yes for dinner
- Cutley

Carroll College honorary degree

Memo

Dr. Tom Trebon cell: (406)459-1212 office: (406)447-4401

commencement May 9

married
Crank. grew up in S.
Phoenix/Seattle U / focus on. over X
can take: 3-4 yrs / of impact of place

I'm honored to be considered, and as time allows I would try to make this happen, although I'm trying to finish a book manuscript by June 1. Could you tell me about this, what's involved, what would be expected of me.

drive or fly

base
memo
procession

- Fri. eve
- 2 p.m. ~~at~~ do not have 1 hr response - 5 min. reception afternoon
Sat. dinner / Cath. Upres. & Diane Evans & Helena
- nurse / memorial \$0.00 number

What would be the financial arrangements?
- fly in Fri. mt, out Sat. / cover cost of flights

For the sake of the household budgeting, does the college cover any of the trip expenses?

no expense

--make our own lodging arrangements?

picked up

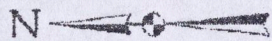
--does the college provide a gown? / will be in touch

--tickets for my wife and at least one friend

invite / to dinner

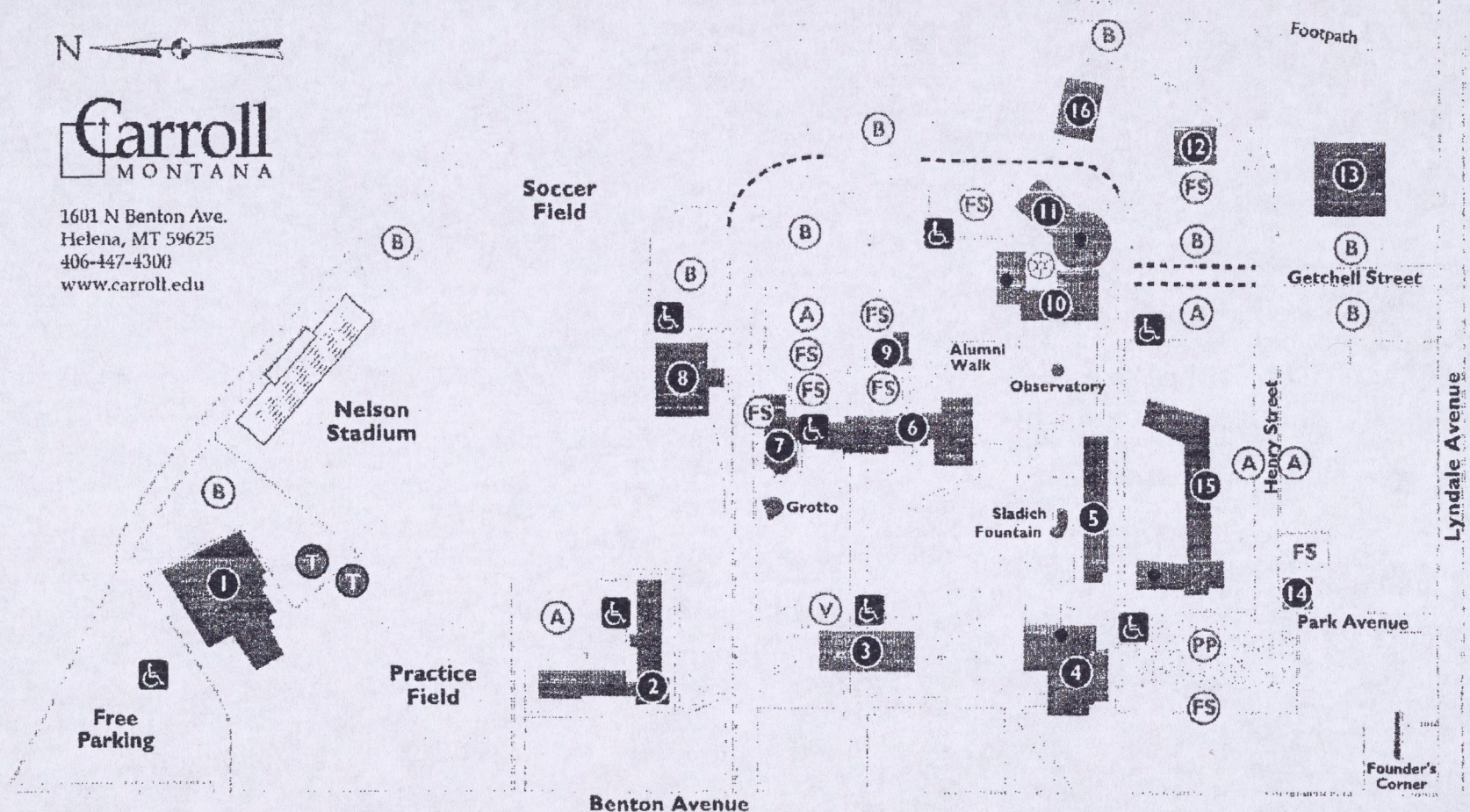
call back next Monday, May 16, 3 pm Helena time, 2 pm Seattle time

- can arrange @ other occasions to recognize
- 2800-3000 athletic center / basketball
- 6590 Mt. grade
- 900 yr Pres / Ben Bay



Carroll MONTANA

1601 N Benton Ave.
Helena, MT 59625
406-447-4300
www.carroll.edu



- (A) A Parking (B) B Parking (PP) Paid Parking (FS) Faculty/Staff Parking (V) Visitor Parking (♿) Handicap Parking
- *** B parking weekday 7am-5pm

- | | | |
|--|--|---|
| <ul style="list-style-type: none"> 1 Physical Education Center 2 Guadalupe Hall 3 O'Connell Hall 4 Campus Center <ul style="list-style-type: none"> • Cafeteria, Lobby, Meeting Rooms 5 Borromeo Hall 6 St. Charles Hall | <ul style="list-style-type: none"> 7 Performing Arts Center
(St. Charles Old North Hall) 8 Corette Library 9 St. Albert's 10 Simperman Hall <ul style="list-style-type: none"> • Wiegand Amphitheater 11 Fortin Science Center <ul style="list-style-type: none"> • Scola | <ul style="list-style-type: none"> 12 Waterbarn 13 Television Station 14 Facilities Offices 15 Trinity Hall <ul style="list-style-type: none"> • Trinity Lounge 16 Civil Engineering Laboratory (T) Tailgating Area |
|--|--|---|