

1974

Temp

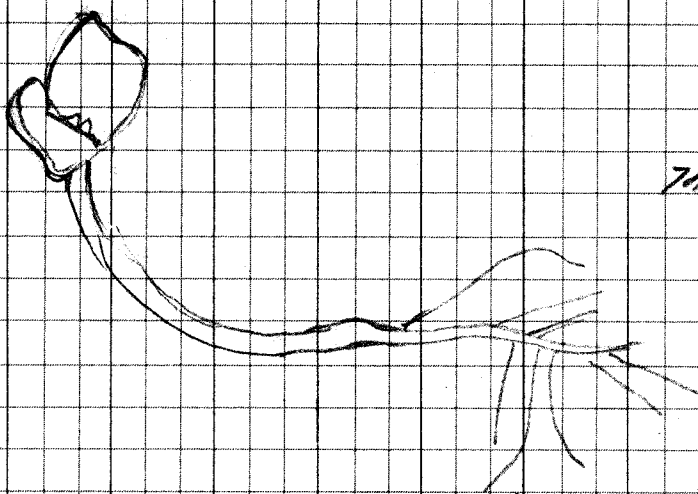
Seedlings (30-40mm) 26°F

→ 25°F

①

②

|       |        |   |  |
|-------|--------|---|--|
| Jan 9 | 9:15 A | Into temp   | Out 3 PM                               |
| " 9   | "      | Into temp (24-25°F) again.  | No damage at 26°F                      |
| " 9   | 3 PM   | Out 25°F (5 hr exposure)  | Frozen roots                           |
| " 10  | 9 AM   | Roots all appear dead.  | Hypus and cot's O.K.                   |
| " 18  | 10 AM  | Hypus cot's still alive.  | Two or 3 first leaves showing on some. |
|       |        | <del>Roots</del> Ends of roots dead but many root sprouting from stele in cell expansion region |  |



These with root hairs

Febr 1 1974

Germinated seeds into 25°F for 3 hrs  
Jan 29 9:50 A to 1:50 P

As above roots (and) stem killed  
Most hypus cot's alive after 3 days  
at 68°F. Cot's green Hypus pink to red.