

Grass Valley 1946 Range Re seeding Plots
Hot Creek District - Lassen National Forest

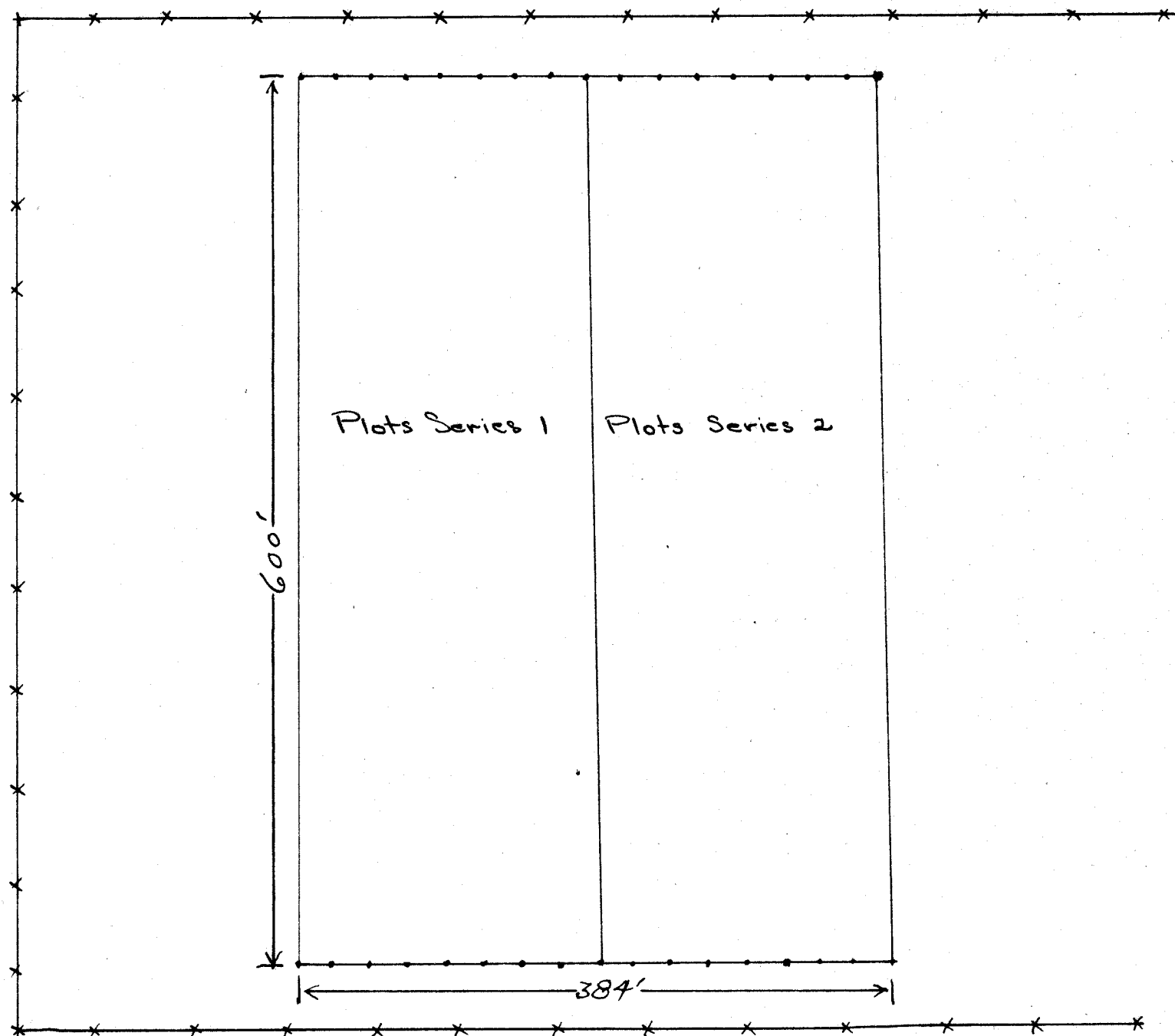
Drilled plots were planted October 11, 1946. Plots were drilled north and south 12 feet wide and 600 feet long. They are numbered from west to east for each of the two replications as follows:

Plots					lbs. per
No.:	GR No. :	Scientific Name	Common Name	Source	acre
1	158	<i>Bromus inermis</i>	Smooth brome	Commercial	12.5
2	19	<i>Agropyron smithii</i>	Western wheatgrass	"	20
3	94	<i>Phalaris arundinacea</i>	Reed's canary grass	"	10
4	61	<i>Trifolium hybridum</i>	Alfalfa clover	"	10
5	157	<i>Falium pratense</i>	Timothy	"	10
6	28	<i>Elymus glaucus</i>	Blue wildrye	Lassen N. F.	10
7	96	<i>Sitanion hystrix</i>	Squirreltail	" " "	10
8	14	<i>Festuca rubra comutata</i>	Showings fescue	Commercial	10
9		Mixture B ₁			10
10		" "			10
11		" "			20
12		" "			30
13		" C ₁			10
14		" "			10 + 4 alfalfa clover
15		" B ₂		Commercial	10
16	160	<i>Sesale cereale</i>	Cereal rye	"	20

Parts by weight

	Mixture B ₁	Mixture C ₁	Mixture B ₂
<i>Bromus inermis</i>	150	110	10
<i>Agropyron cristatum</i>	100	-	-
<i>Medicago sativa and Salenta</i>	25	-	10
<i>Arrhenatherum elatius</i>	10	10	20
<i>Falium pratense</i>	55	11	-
<i>Agrostis alba</i>	-	8	-
<i>Agrostis tenuis setuaria</i>	-	8	-
<i>Phalaris arundinacea</i>	-	6	11

Grass Valley
Hat Creek District
Lassen National Forest



Stakes at 24 foot intervals
Plots 12 feet wide