

**Harvey Valley 1946 Range Re seeding Plots
Sagean River District - Lassen National Forest**

Three types of plantings were made as follows:

1. Species rows made with packet samples of limited seed supply, rows 19 1/2 inches apart and 60 feet long, replicated 3 times. CRANS plantings. Planted October 9, 1946.
2. Drill plots planted with a grain drill, plots 12 feet wide by 300 feet long. CRANS plantings. Planted October 15, 1946.
3. Extension service plots. Planted broadcast, plots 5 feet wide by 10 feet long. Planted October 9, 1946.

1. Species rows

Species rows are numbered from north to south in consecutive order in each replication as follows:

Row No.	CR No.	Scientific Name	Common Name	Source
1	40	<i>Agropyron smithii</i>	Western wheatgrass	Commercial
2	62	" <i>crispatum</i>	Crested wheatgrass	"
3	53	<i>Agrostis alba</i>	Red top	"
4	48	<i>Bromus inermis</i>	Smooth brome	"
5	56	<i>Elytis glomerata</i>	Orchard grass	"
6	88	<i>Elymus glaucus</i>	Blue wildrye	Lassen N. F.
7	81	<i>Festuca idahoensis</i>	Idaho fescue	" " "
8	44	<i>Festuca rubra comutata</i>	Chewings fescue	Commercial
9	66	<i>Trifolium hybridum</i>	Alsike clover	"
10	49	<i>Medicago</i>	Ladak alfalfa	"
11	61	<i>Trifolium repens latum</i>		
		<i>Trifolium hybridum</i>	Ladino-alsike	Commercial mixture
12	52	<i>Poa nevadensis</i>	Nevada bluegrass	Lassen N. F.
13	89	<i>Purshia tridentata</i>	Bitterbrush	SCR P-9870
14	90	" "	"	Lassen N. F.
15	24	<i>Phalaris arundinacea</i>	Reed's canary grass	Commercial
16	39	<i>Phleum pratense</i>	Timothy	"
17	35	<i>Poa annua</i>	Big bluegrass	SCR P-2716
18	77	<i>Agropyron smithii</i>	Western wheatgrass	SCR P-9579
19	45	<i>Agrostis alba tenuis</i>	Astak bent	Commercial
20	31	<i>Arrhenatherum elatius</i>	Tall meadow catgrass	"

No.	GR No.	Scientific Name	Common Name	Source
21	29	<i>Dactylis glomerata</i>	Orchard grass	SCS P-5155
22	64	<i>Phalaris arundinacea</i>	Reed's canary grass	SCS P-5155
23	148	<i>Muhlenbergia squarrosa</i>		Lassen E. Park
24	119*	<i>Bromus marginatus</i>	Mt. bromegrass	" " "
25	150**	<i>Calamagrostis</i> sp.		" " "
26	151*	<i>Elymus glaucus</i>	Blue wildrye	" " "
27	152	<i>Hordium</i> sp.		" " "
28	153**	<i>Elymus glaucus</i>	" "	" " "
29	154*	<i>Bromus marginatus</i>	Mt. bromegrass	" " "
30	155	<i>Douglasia caespitosa</i>	Tufted Hairgrass	" " "
31	156*	<i>Elymus glaucus</i> (very leafy)	Blue wildrye	" " "
32	157	<i>Falcus pratensis</i>	Vinethy	Commercial
33	158	<i>Bromus inermis</i>	Smooth brom	"
34	159	" <i>marginatus</i>	Mt. bromegrass	"

* Not sufficient seed to include these 4 grasses in second and third replications.

** Not sufficient seed to include these 2 grasses in third replication.

2. Drilled Plots

The drilled plots are numbered from east to west. The same plots are planted in the second series (or replication) in the same order as the first as follows:

Plot No.	GR No.	Scientific Name	Common Name	Source	lb/acre
1	158	<i>Bromus inermis</i>	Smooth brome	Commercial	20 lbs.
2	159	" <i>marginatus</i>	Ht. brome	"	15
3	160	<i>Agropyron smithii</i>	Western wheatgrass	"	25
4	54	<i>Phalaris arundinacea</i>	Reed's canary grass	"	10
5	157	<i>Phleum pratense</i>	Timothy	"	15
6	115	<i>Elymus glaucus</i>	Blue wildrye	SCS, P-10120	10
7	61	<i>Trifolium hybridum</i>	Alsike clover	Commercial	10
8	44	<i>Festuca rubra cuneolata</i>	Chewings fescue	"	10
9		Mixture A*			10
10		" "			15
11		" "			20
12		" "			30
13		" B*			20
14	160	<i>Secale cereale</i>	Common rye	Commercial	40

*Mixture A: *Bromus inermis* 10 lbs.
Medicago sativa and falcata. 10 "
Arrhenatherum elatius. 20 "
Phleum pratense. 11 "

*Mixture B: *Bromus inermis* 100 "
Agropyron cristatum. 100 "
Medicago sativa and falcata. 25 "
Arrhenatherum elatius. 10 "
Phleum pratense. 55 "

3. Extension service plots

Two series of plots were planted. The west series was planted with seed from Dr. Love's collection. The east series was planted with seed obtained from Dr. Stebbins. Plots are numbered from north to south. Space was left on south of west series for legumes to be planted spring 1947. Plots were as follows:

West series

Plot: Love-Jones:			
No. :	plant No. :	Scientific Name	Common Name
1	6	<i>Arrhenatherum elatius</i>	Tall oatgrass
2	6A	" "	Non-shatterin tall oatgrass
3	7	<i>Bromus carinatus</i>	California bromegrass
4	8	<i>Festuca elatior</i> L. 29366	Tall fescue
5	8A	<i>Festuca elatior</i>	Kentucky 31 selection of fescue
6	12	<i>Lolium perenne</i>	H. ryegrass
7	1A	" "	Perennial ryegrass
8	25	<i>Bromus catharticus</i>	Prairie grass
9	25A	<i>Phalaris arundinacea</i> x <i>P. tuberosa stenoptera</i> hybrid	
10	30	<i>Sanguisorta minor</i>	Burnet
11	30 A	" "	European strain of burnet
12	63-64	<i>Bromus inermis</i>	Smooth brom
13	100		British brom
14	101A		Selection of Grimson clover

To be planted in the spring

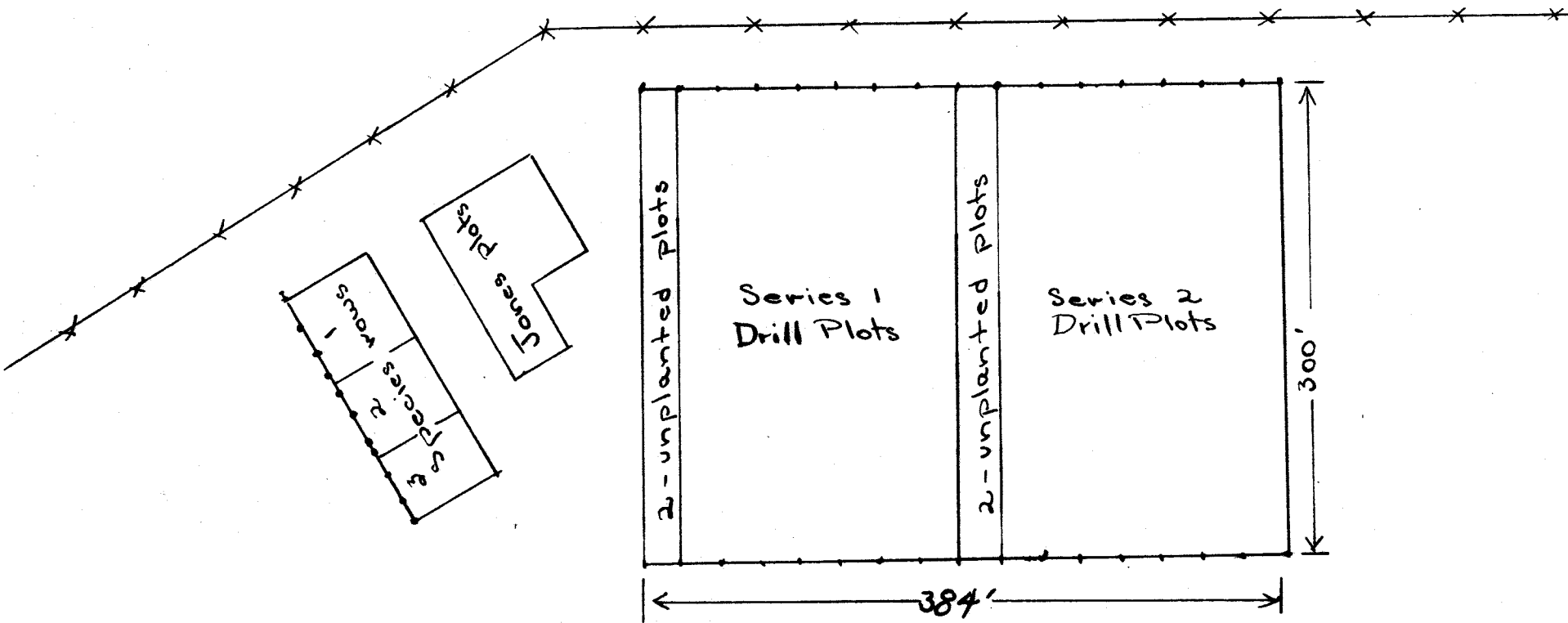
15	15	<i>Lotus corniculatus</i>	Birds foot trefoil - erect type
16	16	" "	" " " - prostrate type
17	18	<i>Medicago sativa</i>	Ladak alfalfa
18	19	<i>Medicago lupulina</i>	Black medick
19	26	<i>Trifolium subterraneum</i>	Subterranean clover - Mt. Barker variety
20	30	" "	Subterranean clover - Tallarook variety
21	61	<i>Medicago officinalis</i>	Yellow sweet clover
22	61A	" "	Selection yellow sweet clover
23	102	<i>Trifolium hirtum</i>	Rose clover

East Series

Fig. :	Stobbs No. :	Scientific Name
1	570 B	<i>Bromus marginatus-steniscus</i> *
2	574	<i>Bromus trinitii-carinatus</i> *
3	510 A	<i>Bromus hachemius-steniscus</i> *
4	510 B	<i>Bromus hachemius-steniscus</i> *
5	616 A	<i>Bromus hachemius-steniscus</i> *
6	616 B	<i>Bromus hachemius-steniscus</i> *
7	650	<i>Bromus catharticus-hachemius</i> *
8	651	<i>Bromus catharticus-hachemius</i> *
9	652 C	<i>Bromus catharticus-hachemius</i> *
10	653	<i>Bromus catharticus-hachemius</i> *
11	655	<i>Bromus hachemius-steniscus</i> *
12	6107	<i>Bromus carinatus</i>
13	6108	<i>Bromus carinatus</i>
14	Leys-type No. 31	<i>Festuca idahoensis</i> from Rice Mountain, Nevada N. F.

* Amphidiploid hybrid

Harvey Valley
Susan River District
Lassen National Forest



drill plots 12 feet wide
Stakes at 24 foot intervals

Area tilled with Towner disc,
Spike tooth harrow; rolled before
seeding.

Drilled with 6 foot Van Brunt drill.