

# Fall Planting of bitterbrush 1943

Oct 14. Shasta seed

Dry Lake, Lassen (exclosure)

Planted 4 Pt fruit about 12" west of stakes (1' high) numbered 1 to 50 also 4 Pt seeds 12" east of same stakes. Planted about 1" deep.

Nov 22 Shasta seed

Smith sale burn (Medoc)

Planted 5 to 10 seeds E of 50 (1' high) stakes and 5 to 10 fruits west of same stakes. Planted about 1" deep. (1" of snow on ground).

Nov 19 Dry Lake Lassen

Glandulosa seed and fruit

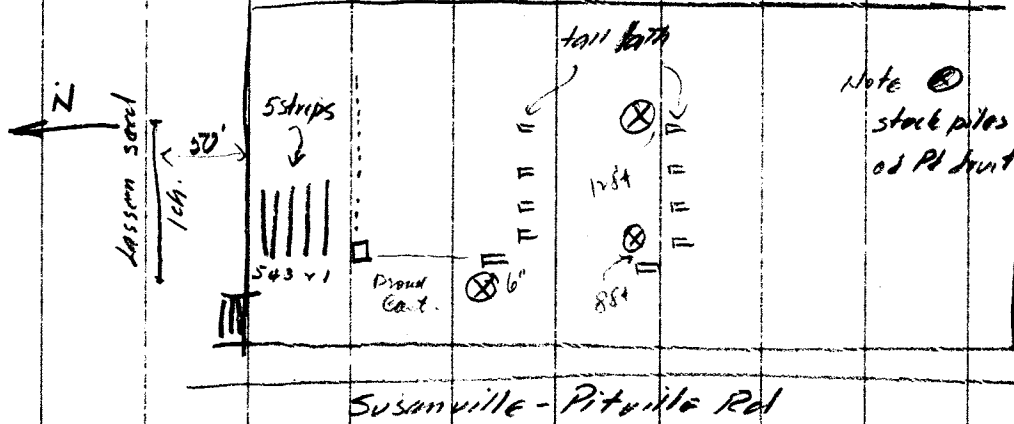
2 seeds planted S of 50 stakes } same stakes as  
2 fruits " " " " } above (Oct 14)

Lassen seed and fruit

5 strips north of 4" square white post

Strip

- 1 Seed 1/4" plus brome scattered on top
- 2 Fruit and brome 1/4"
- 3 Seed 3/4" plus brome on top.
- 4 Fruit and brome 1/4"
- 5 Seed 1 1/4" plus brome on top.



Note ⊗  
stack piles  
of Pt fruit

Bitterbrush Reseeding  
Fall 1943

May 26 1944  
A. Hervey

Stake No	Madoc Smith Sale Burn		Dry Lake Madoc & Fischer				
	Fruit <sup>shasta</sup> W	Seed E	Fruit N	Seed S			
15	0	1	Planted G.F.		}		
32	0	1	Dec 24/43				
44	2 { south planted spring 1943		Examined May 27/44				
			ALH				
58	special notes	}	1 germinated east side of stake planted spring 1943 hold over		}		
75			1 E '43 survival				
76			3 E " " "				
77			1 E " " "				
90			1 ger E hold over				
93			2 E survival			vigorous grazed	
98			1 E " "			grazed	
93			3 E " "			" "	
6						1	} planted
7						1	
18			1				
40			2 W survival	vig. grazed			
Pumice plot May 27							
18	2 survival vigor fair (only survival)						
No germination of seed and fruit planted in fall of 1943							
Soil damp 3" below surface							
Lack of moisture cause of germination failure.							