

September 10, 1943

Number of hours per day that temperature ranges between
32° F. and 50° F.

Bitterbrush - Weather Record - Hills Flat 1941

Date	August 1940	Sept. 1940	Oct. 1940	Nov. 1940	Dec. 1940	Jan. 1941	Feb. 1941	March 1941	April 1941	May 1941
	hours	hours	hours	hours	hours	hours	hours	hours	hours	hours
1 - 2	6.5	5.5	10.0	2.0					9.0	14.0
2 - 3	9.5	7.5	4.0		3.0				6.5	13.5
3 - 4	10.0	8.5	6.0		2.0				6.5	9.0
4 - 5	8.5	5.5	4.0						-	10.5
5 - 6	8.0	4.5	6.0						-	9.0
6 - 7	7.5	11.5	6.0						6.0	11.0
7 - 8	10.0	4.5	5.0						8.0	16.0
8 - 9	8.0	12.5	6.0						9.0	6.5
9 - 10	6.0	3.5	4.0						5.0	8.5
10 - 11	9.0	4.5	4.0						6.5	12.0
11 - 12	9.5	12.0	4.0					1.0	6.5	18.0
12 - 13	8.5	13.0	4.0					1.0	7.0	14.0
13 - 14	8.0	6.0	5.0	3.0				3.0	7.0	10.0
14 - 15	7.5	4.5	3.0	3.0				2.0	8.0	6.5
15 - 16	8.5	7.0	6.0	4.0				6.0	4.5	7.5
16 - 17	8.0	7.0	8.0	6.0					3.0	9.0
17 - 18	7.5	19.5	4.0						1.0	6.0
18 - 19	6.0	6.5	6.0						3.0	6.0
19 - 20	4.0	4.5	2.0						7.0	7.0
20 - 21	4.5	7.0	12.0						2.0	10.5
21 - 22	8.5	5.0	8.0						7.0	11.0
22 - 23	7.0	6.5	5.0						9.5	10.5
23 - 24	7.0	12.0	12.0						8.5	15.0
24 - 25	186.5	9.0	6.0	8.0					5.5	11.5
25 - 26	7.0	6.0	6.0						8.5	19.0
26 - 27	7.0	6.0	6.0						8.0	14.5
27 - 28	7.0	6.0	4.0						7.0	9.0
28 - 29	9.0	5.0	5.0						10.0	12.5
29 - 30	6.5	4.0	7.0						14.0	6.5
30 - 31 or -1	11.0	4.0	8.0					8.0	15.5	8.5
31 - 1	6.0		8.0					10.0		5.5

32° F }
 to }
 50° F }

{ total from Sept 17-18 to Dec. 4 = 17 days (287.5 hr.)
 " " Mar 12 to May 15 = 16 days (396.0 ")
 total from Sept 24-25 to May 15-16 = 36 days (874.0)
 " Sept 17-18 " " " = 28 days (683.5)

1237.5

Temp. Blacks Mt 13r.

Max hrs duration

1940		Air		Soil	
	3"	4"	Max	Min	14"
Jan	32	25			
Feb	24	24			
Mar	55	24			
Apr	67	26			76
May	81	30			114
June	98	39			132
July	99	48			158
August	105	43			
Sept	86	33			
Oct	67	30			
Nov	40	25			
Dec	20	13			
Max 180					
Study plan					
	212		Wet	DM	
	200		1-5	5-60	
	180		7-15	1-4	
	160		3		
	140		5		
	120		30		
	100		60		

Dec. 29 1940
 A Horman
 K Battle

Soil Temperatures Black Mt
 1/4 inch

Date	Max	Min		Max	Min		Max	Min		Max	Min
Aug 1, 1940	128	28	Sept 1	126	21	Oct 1	12	17	Nov 1	36	22
2	132	28	2	118	34	2	62	21	2	20	20
3	132	32	3	102	28	3	66	20	3	20	20
4	130	34	4	110	27	4	70	21	4	20	20
5	132	32	5	58	25	5	76	16	5	20	20
6	132	40	6	100	21	6	78	16	6	20	20
7	133	30	7	79	28	7	60	20	7	20	20
8	145	32	8	117	20	8	80	18	8	22	16
9	145	30	9	101	19	9	90	16	9	20	20
10	148	26	10	118	16	10	75	19	10	20	20
11	145	32	11	120	18	11	98	20	11	20	18
12	146	36	12	101	32	12	96	18	12	28	10
13	145	27	13	80	31	13	96	16	13	36	16
14	145	31	14	105	16	14	97	30	14	42	18
15	144	29	15	59	21	15	94	16	15	43	14
16	144	29	16	69	23	16	63	20	16	47	12
17	143	30	17	68	20	17	96	20	17	35	14
18	143	29	18	44	28	18	96	20	18	32	10
19	138	26	19	74	27	19	94	18	19	25	3
20	140	18	20	76	20	20	90	26	20	24	12
21	140	22	21	85	20	21	88	20	21	20	12
22	122	30	22	90	21	22	80	20	22	28	6
23	140	28	23	95	17	23	70	27	23	30	10
24	132	30	24	81	28	24	41	26	24	26	16
25	85	28	25	99	20	25	44	26	25	32	10
26	106	22	26	88	23	26	28	20	26	26	8
27	112	25	27	60	20	27	55	20	27	30	11
28	120	26	28	67	23	28	34	19	28	26	12
29	125	28	29	78	17	29	42	20	29	32	18
30	122	26	30	85	18	30	47	18	30	25	12
31	118	35				31	44	17			

Soil temperatures 1/4" depth

B. M. Branch Dec 9-16 1940

Duration of temperatures

Date	40°-30°F	30-20	20-10	10-0	0 and -5	Total
Monday		3	24			24
Tues			14	10		24
Wed			7	17		24
Thurs			7	7	10	24
Fri			6	6	(12)	24
Sat			6	8	10	24
Sunday			14	10		24

Longest period below 10°F 17 hours

" " " 0°F 17 hours between Fri and Sat

Dec. 29, 1942
 A. Hornum
 K. Battle

Soil Temperatures Blacks Mtn.
 1/4 inch

Date	Max.	Min.	1941	Max.	Min.	1941	Max.	Min.	1941	Max.	Min.
Dec. 1, 1940	26	10	Jan 1	20	20	Feb. 1	20	18	Mar. 1	19	18
2	37	10	2	20	20	2	17	14	2	19	18
3	37	16	3	20	20	3	20	20	3	18	18
4	26	11	4	20	20	4	20	20	4	20	18
5	28	13	5	20	20	5	20	20	5	20	18
6	26	11	6	18	18	6	20	20	6	19	17
7	28	13	7	18	18	7	20	20	7	19	16
8	25	12	8	18	18	8	20	20	8	19	16
9	24	12	9	18	16	9	20	20	9	18	16
10	19	7	10	18	16	10	20	20	10	30	16
11	18	1	11	18	14	11	20	20	11	36	16
12	20	-3	12	18	17	12	20	20	12	39	16
13	18	-5	13	19	19	13	20	20	13	46	18
14	18	-5	14	19	19	14	20	20	14	42	15
15	20	0	15	19	19	15	20	20	15	46	14
16	22	15	16	19	19	16	20	20	16	54	18
17	17	17	17	19	19	17	20	20	17	48	12
18	18	18	18	19	19	18	20	19	18	52	19
19	18	18	19	19	19	19	20	18	19	42	20
20	18	18	20	19	19	20	20	18	20	52	21
21	18	18	21	19	19	21	20	20	21	50	15
22	18	18	22	19	19	22	20	18	22	55	19
23	19	19	23	19	19	23	20	18	23	48	14
24	19	19	24	19	19	24	20	18	24	54	20
25	19	19	25	19	19	25	20	18	25	57	15
26	19	19	26	19	19	26	20	18	26	55	19
27	19	19	27	18	16	27	18	18	27	51	19
28	19	19	28	20	16	28	19	18	28	35	23
29	19	19	29	18	15				29	44	20
30	20	20	30	18	16				30	42	21
31	20	20	31	18	17				31	36	23

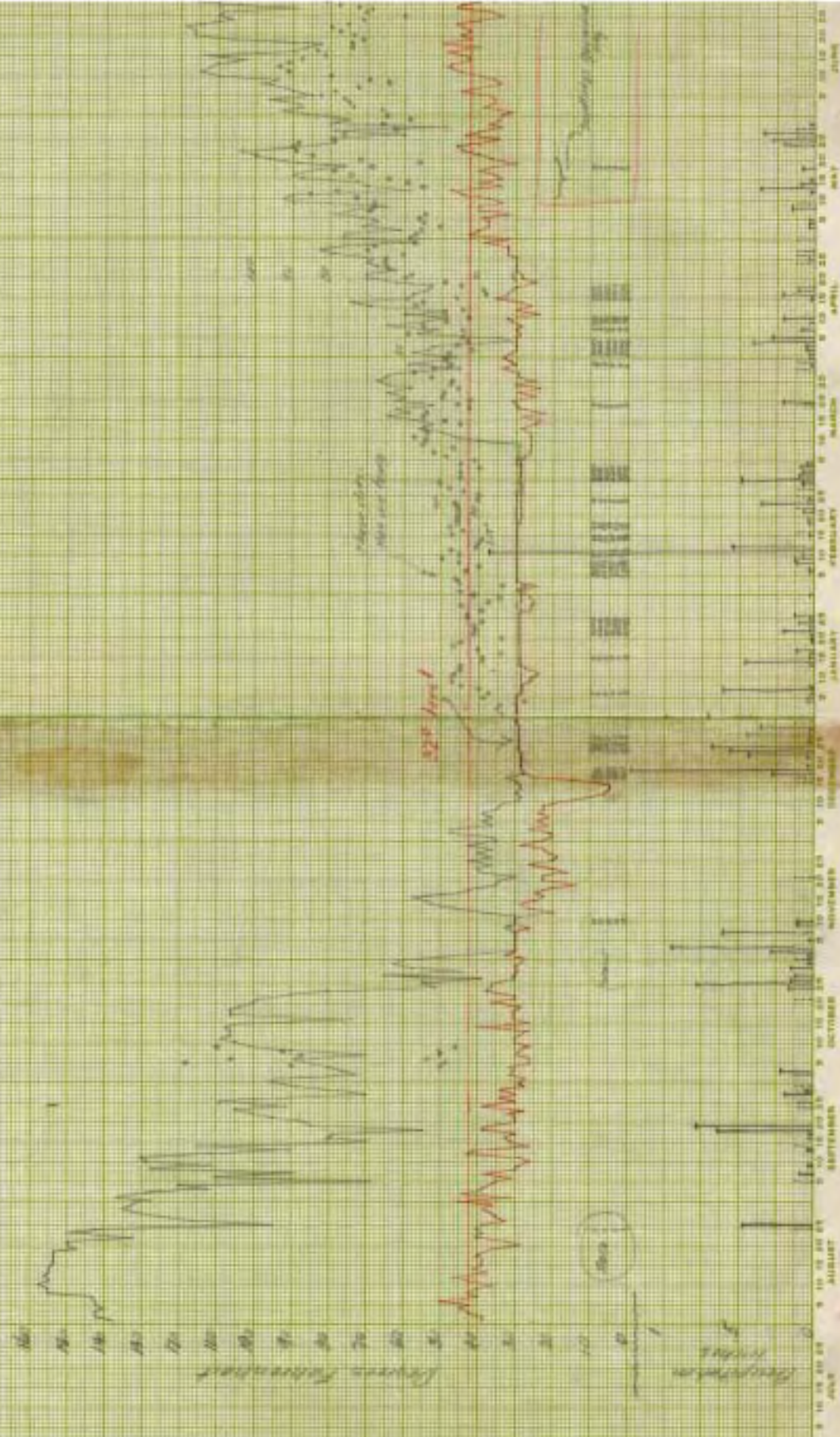
1940

1941

JULY AUGUST SEPTEMBER OCTOBER NOVEMBER DECEMBER JANUARY FEBRUARY MARCH APRIL MAY JUNE

Fig. 2 - Daily maximum and minimum temperatures at LA LINN
1940-1941. (The following data were obtained from the
LA LINN, 1940-1941. LA LINN, 1940-1941.)

Maximum and minimum
Daily soil temperature to which insects are exposed
Charles H. Thomas Station



1940

1941

Figure 2
Alimony