

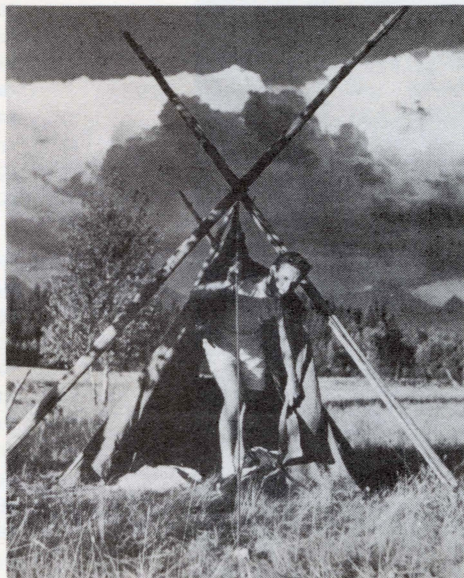
CONDITIONS OF SALE

*Who, you ask, is this salesman shark who would sell all the scenes in a national park?
Stacked on his counters of gnarled old pine are bottles and buckets of sunset wine,
And mixed in those barrels are rain and snow, glaciers, ice caves and alpine glow.
He holds every mortgage, deed and lien on mountain sounds and wind and scene.
These were wangled from a grizzled old goat and a timberline bird with a song-sore throat,
And they're hid real well in a rendezvous in a mountain meadow full of deer and dew.
If your soul's in the market for sweet thrush song and you'd like a freshet oom miles long,
Or the blazing aurora you'd like to own, or a turquoise lake on a long term loan,
You'd better speak up in a voice real loud and plan to arrive on the very next cloud.
The prices are cheap but before any sale you must taste ten days of our mountain trails;
Count all the stars in the yawning skies and laugh at a western man's campfire lies.
Since it's hard to both rhyme and fully explain, below we will list the details mundane.*

WILDERNESS TRAIL TRIPS is still the most thrilling vacation yet devised. No holiday can offer you such a complete change of routine, such inspirational surroundings, warm friendships and healthy living.

EQUIPMENT: You need none! Everything except your actual wearing apparel is furnished. Our comfortable wool sleeping bags are complete with tufted air mattresses for plush sleeping. Other slumber equipment includes the thrilling music of mountain streams, the crackle of the campfire, the threnody of thrush song and the jeweled night sky of the high country.

FOOD: We're mighty particular about our full course meals. Food preparation is handled by the staff. Breakfast and dinner is served in camp, and a trail lunch is provided at noontime. You'll have food as fine as it can be served—and **plenty** of it!



TRAILS: They are maintained by the National Park Service and have been constructed through the most scenic area in all America. The grades are kind to the foot traveler. You hike your own desired pace; there's no "keeping up" with the leader to contend with.

PACK ANIMALS transport all food and equipment. You hike free and unencumbered. All packing is done by the staff.

HOW STRENUOUS? This is not designed as a feat afoot, **but** there are plenty of side trips if you wish more hiking or if you like mountain climbing.

It's a "come again" vacation, for each year **over 10%** of our guests are repeaters. A Minneapolis doctor writes, "Without any doubt, your trip is one of the high points of enjoyment in my life!" We will be happy to send you the names of others in your community who have trekked with us so that you may hear first hand of their enthusiasm for this mountain adventure.

THERE ARE NO EXTRAS. The rates include everything. There are four 10-day trips. Following each trip is a float trip down the famous North Fork of the Flathead River. This eleventh day is optional. **RATES:** \$150 for 10 days or \$165 for 11 days.



PHOTOS BY BLAIR THAW

SCHEDULE OF TRIPS. July 7-17, July 21-31, August 4-14, August 18-28. All trips start at Belton (West Glacier), Montana, on Monday afternoon with the arrival of Great Northern's Oriental Limited. All 10-day trips end Thursday afternoon and coincide with train departures from Belton. If you plan on 11 days, your departure will be Friday afternoon. (Add one day to the above schedule dates.) Arrangements can be made to meet guests at the Flathead Airport or Empire Builder (Streamliner) arrivals at Whitefish.



For map & prospectus write immediately to:

H. Frank Evans, The Trail Merchant.

Until June 1, address: 715 W. Garden, Coeur d'Alene, Idaho.

After June 1, address: Panorama Ranch, West Glacier (Belton), Montana



The Trail Merchants

"this year I'm walking"

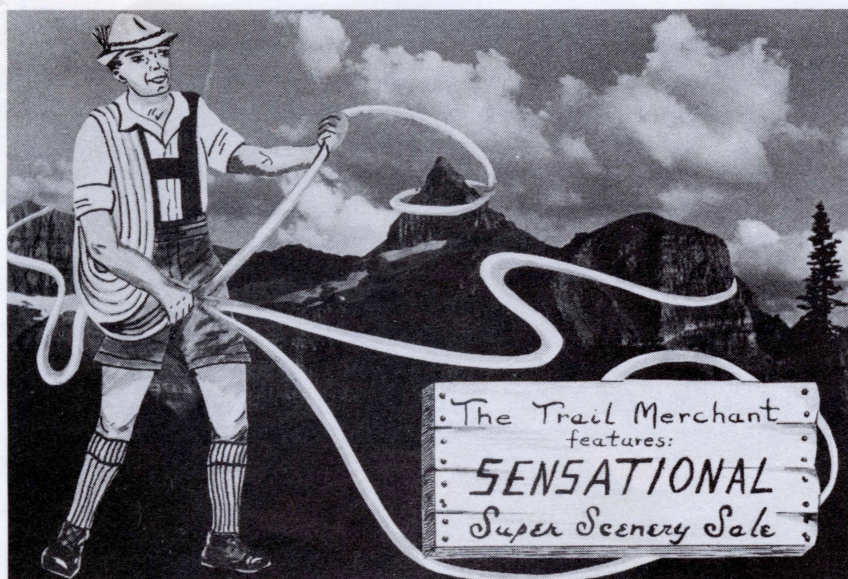
Your gracious hosts at Panorama Ranch and on the trail are Frank and Edna Evans. Years of intimate living with the inspirational beauties of this land have shaped these personalities into wonderful trail companions. Frank is a naturalist who spent several years as a ranger in Glacier National Park. He has tramped these trails and climbed these peaks for the past fifteen years. Edna is a registered nurse and serves as camp doctor. They hike with you on the trail. They can find mountain goats among the cliffs above and tell you where you will be likely to see moose and elk from the trail. They will teach you to catch the fighting rainbow, Dolly Varden and cut-throat trout that abound in these mountain streams and lakes.

Glacier National Park in northwestern Montana is the scenic climax of the American Rockies. No area can surpass it in sheer beauty, and it defies our language for adequate superlatives. Its beauties provoke a deep reverence and humility for those who enjoy the sanctuary of its wilderness. One highway crosses the park and two others bite into the lower areas of two of its valleys. Beyond this the million acre mountain wonderland belongs to the wild and is dissected only by trails. The park has a rich population of wild flowers and forests, and it is inhabited by more big game species than any other similar area.

To live here for a few days in the sanctity of primeval splendor and be on speaking terms with the mountains, the waterfalls and the very wilderness itself, is one of the most inspiring experiences that you can know. This vacation offers you a respite from the ulcerating pace of vicious routine of present day living. You will long cherish every minute that you spend with us on the trails of Glacier National Park. Our every effort is dedicated to your complete enjoyment of this vacation adventure.



PHOTO BY THAIS SPENCER



*Wilderness Trail Trips
in Glacier National Park*

715 W. Garden Avenue
Coeur d'Alene, Idaho

SEC. 34.66 P.L.&R.
U. S. POSTAGE
PAID
COEUR D'ALENE, IDA.
PERMIT NO. 105

Dr. Caroline McGill
58 W. Quartz St.
Butte, Montana

S 1 51