

# AMERICAN MOUNTAINS

ALONG THE ROUTE OF THE  
AIR-CONDITIONED, ROLLER-BEARING

## NORTH COAST LIMITED





# The Scenic Mountain Route Across America

You See Twenty-eight Ranges of Mountains  
from Northern Pacific Main Line Trains

## Count the Mountains!

SEE all the Northern Pacific mountains you can on your journey, for they are unsurpassed anywhere in the world! Twenty-eight ranges are visible from your train window—the same vast mountains that Lewis and Clark overcame, rich now in the lore of pioneer days in the Northwest, wearing the mantle of glamor that gold prospector, railroad builder, and rancher have put upon their mighty shoulders!

This is the “March of the Mountains” as it appears to the watchful westbound Northern Pacific traveler:

Wolf Range—South of Hysham, Montana.  
Beartooth Range—Southwest of Billings.  
Crazy Mountains—Reed Point to Mission, north.  
Absaroka Range—South to Livingston.  
Bridger Range—Bozeman to Belgrade, north.  
Gallatin Range—Livingston to Bozeman, south.  
Madison Range—Bozeman to Three Forks, southwest.  
Tobacco Root Range—Sappington to Whitehall, south.  
Gravelly Range—Whitehall to Homestake, south.  
Snowcrest Range—West of Whitehall.  
Continental Divide—Main Range of the Rockies, Whitehall to Silver Bow.  
Bull Mountains—Whitehall to Pipestone Springs, north.  
Highland Mountains—Seen from Butte, south.  
Continental Divide—Seen from Helena and vicinity.  
Big Belt Range—North of Townsend, Winston and Helena.  
Elkhorn Range—Toston to Helena, south.  
Anaconda Range—Butte to Garrison, west.  
Flint Creek Range—Deer Lodge to Gold Creek, north.  
Deer Lodge Mountains—Same as Flint Creek Range.  
Garnet Range—Drummond to Bonner, north.  
Sapphire Range—Drummond to Missoula, south.  
Mission Range—Arlee to McDonald, northeast.  
Coeur d'Alene Mountains—Paradise to Thompson Falls, southwest.  
Bitter Root Range—Thompson Falls to Lake Pend Oreille, south.  
Cabinet Mountains—Paradise to Heron, north.  
Selkirk Range—Oden to Rathdrum, northwest.  
Cascade Mountains—Cle Elum to Auburn, east.  
Olympics—Coast cities (clear weather).

*Twenty-eight Ranges of Them!*

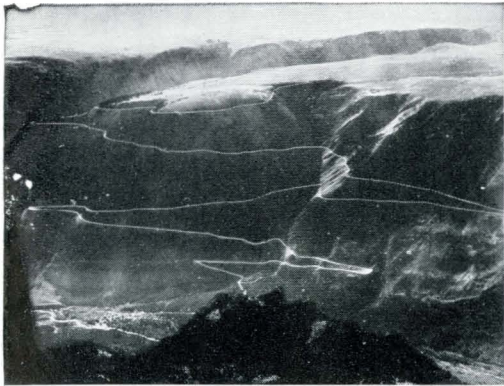
Panorama of Rockies, From Continental Divide, Butte, Mont.

The Northern Pacific Crosses Nearby at 6,356-foot Elevation

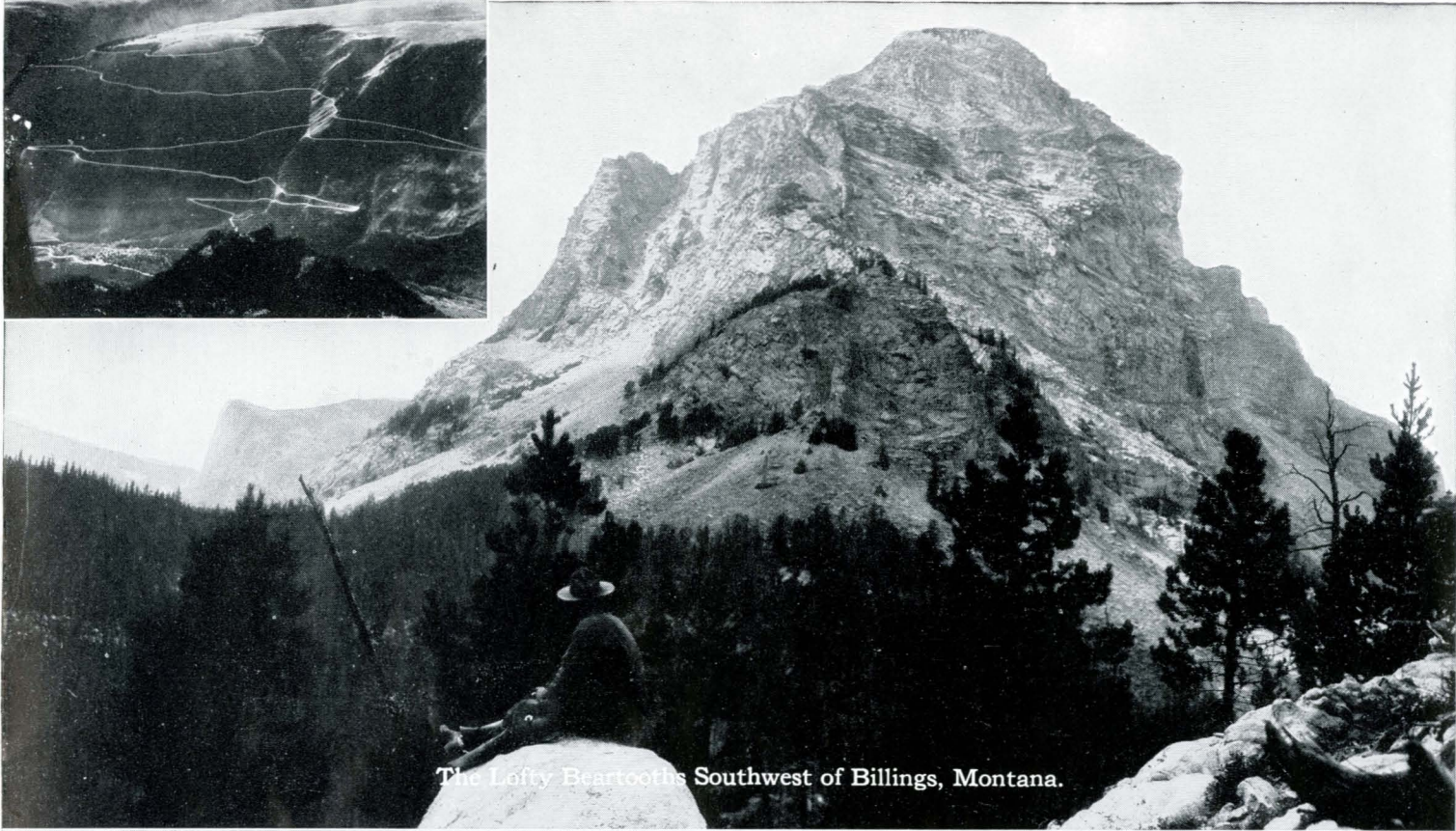
(Homestake Pass)



# stic Mountain Scenery on the Main L



← From Red Lodge, Amazing Switchbacks Lead You to the Top of the Rockies and Yellowstone Park



The Lefty Beartooths Southwest of Billings, Montana.



The Beautiful Absarokas near Livingston, Montana.



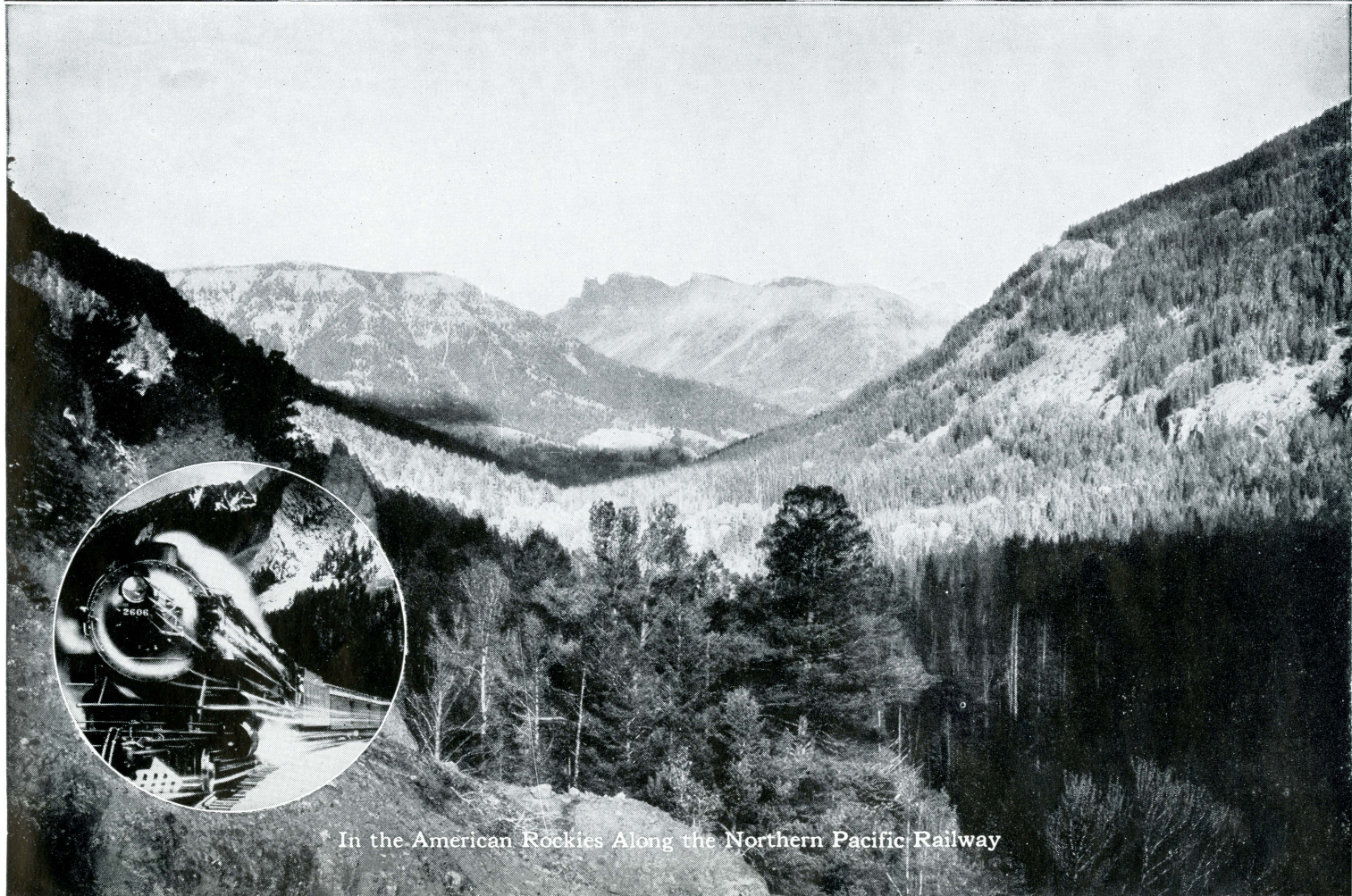
# For More Than 1000 Miles—Majes



←The 10,000-foot Peaks of the Crazy Mountains—Montana



Blue Lake in the Crazy Mountains of Montana.

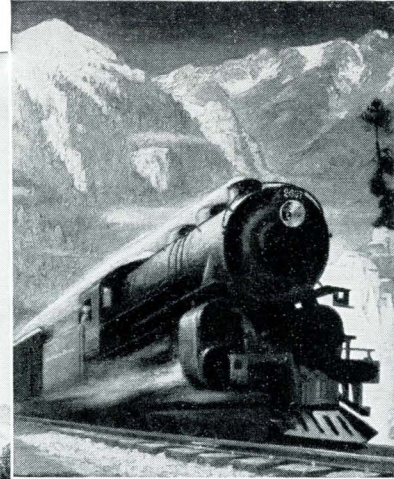


\* In the American Rockies Along the Northern Pacific Railway

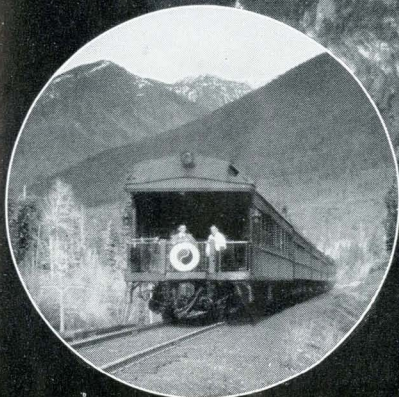


# Line of the Northern Pacific Railway

Bozeman Pass➤

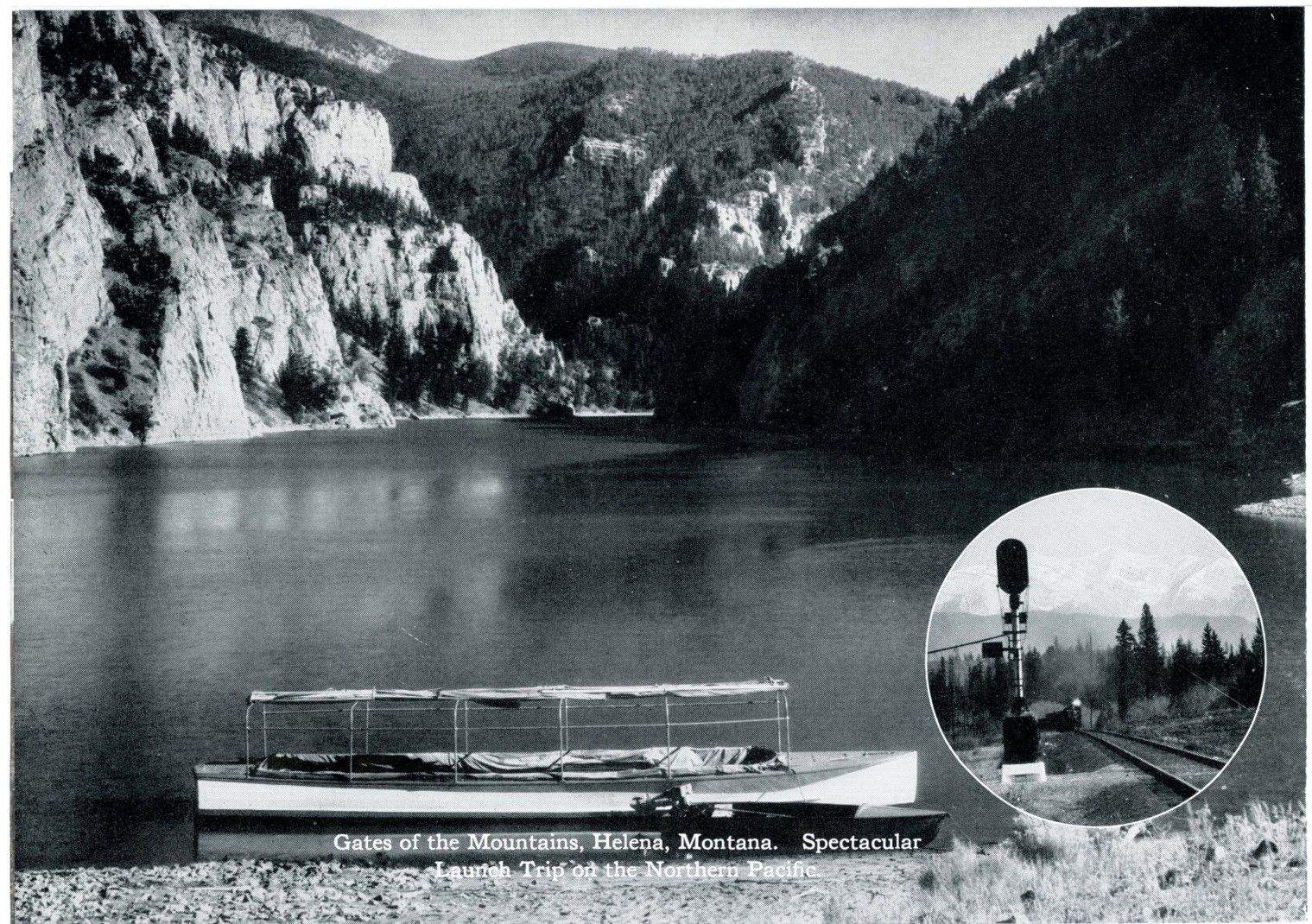


The Gallatin Mountains at Bozeman, Montana, are Spectacular.

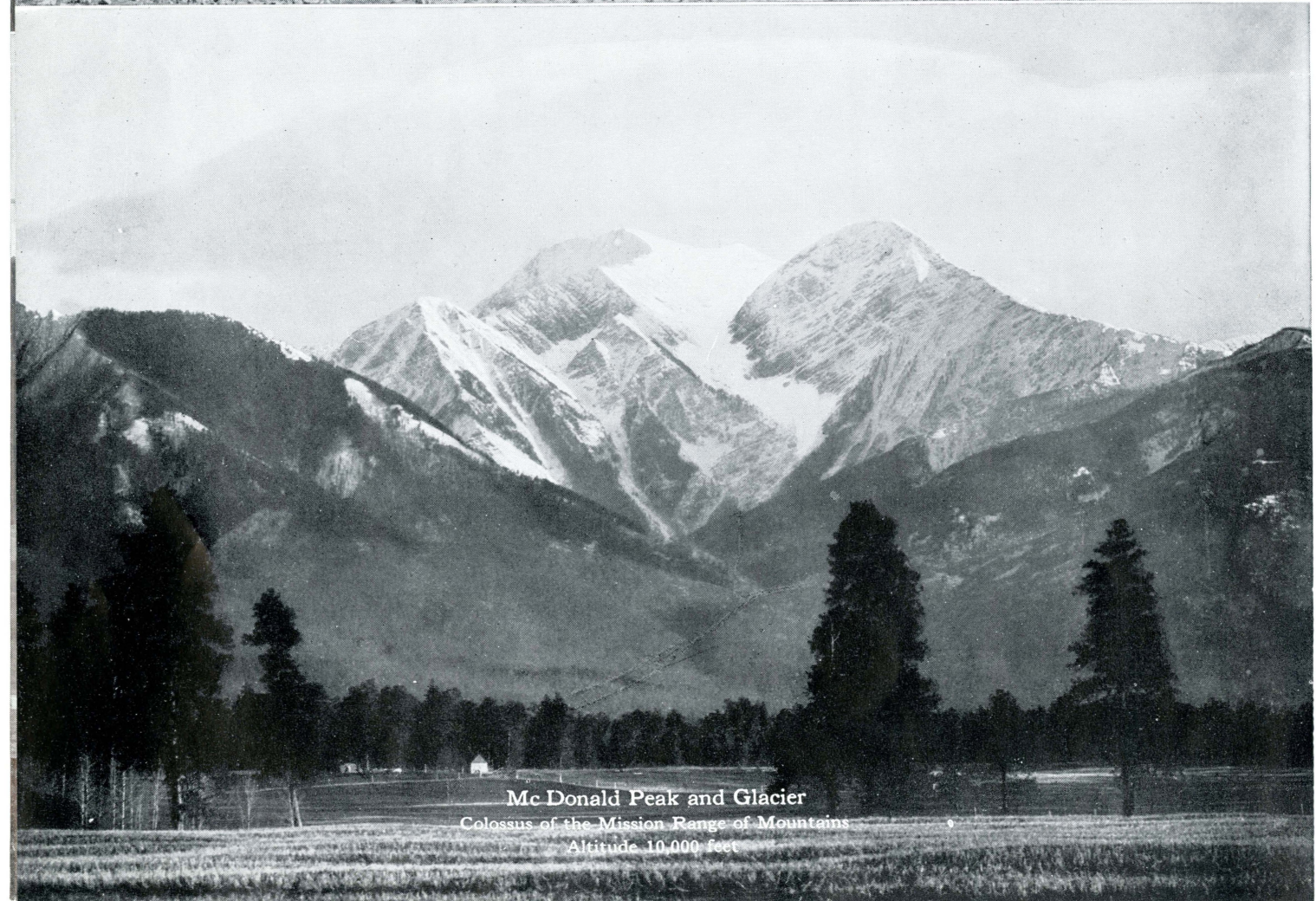


Montana, State of Mountains, Shows Northern Pacific Travelers Many 10,000 Foot Peaks.





Gates of the Mountains, Helena, Montana. Spectacular  
Launch Trip on the Northern Pacific.



Mc Donald Peak and Glacier  
Colossus of the Mission Range of Mountains  
Altitude 10,000 feet





Through the Montana Rockies into Idaho



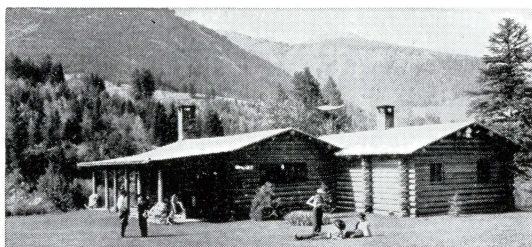
The Cascade Mountains, with Towering Beacons Like St. Helens, are Magnificent.



DELIGHTFUL  
PLACES  
TO STAY IN  
THE MOUNTAINS



LET THE  
NORTHERN PACIFIC  
HELP MAKE YOUR  
TRAVEL PLANS



Ranches are restful and lots of fun. There are 150 excellent ranches and mountain lodges in Montana and Wyoming Rockies served by the N. P.



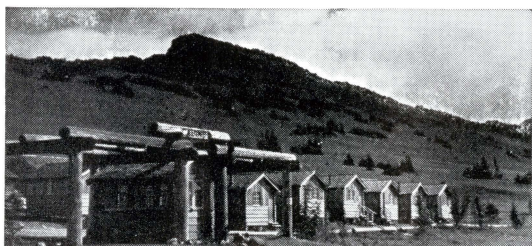
Luxurious Hotels of Yellowstone Park are most attractive to summer visitors. Excellent rooms, cuisine, dances, parties daily.



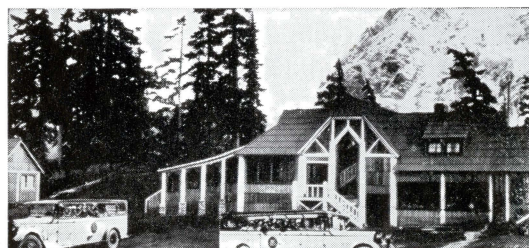
Timberline Lodge, Mt. Hood, Oregon. New, modern 6,000 feet elevation.



Paradise, Rainier Park, Winter and Summer, an inspiring vacation place.



Sunrise, Rainier Park, 200 nice cottages on the sunrise side of Rainier. Located at the edge of Emmons Glacier—always cool and comfortable.



Mt. Baker, Wash. Scenic Winter and Summer playground. Rustic cottages on the mountain slopes.

Whenever you travel West, you'll enjoy the  
air-conditioned luxury train, the

## NORTH COAST LIMITED

CHICAGO ■ ST. PAUL ■ MINNEAPOLIS ■ DULUTH ■ SUPERIOR ■ MINNESOTA'S 10,000 LAKES REGION ■ FARGO ■ BISMARCK ■ "ROOSEVELT PARK" ■ THE DAKOTA BAD LANDS ■ BILLINGS  
YELLOWSTONE PARK ■ LIVINGSTON ■ BOZEMAN ■ HELENA ■ BUTTE ■ MISSOULA ■ SAND  
POINT ■ SPOKANE ■ YAKIMA ■ SEATTLE ■ TACOMA ■ PORTLAND ■ VANCOUVER ■ VICTORIA

E. E. NELSON PASSENGER TRAFFIC MANAGER, ST. PAUL, MINN.

OFFICES IN MANY  
PRINCIPAL CITIES  
OF U. S. A. & CANADA