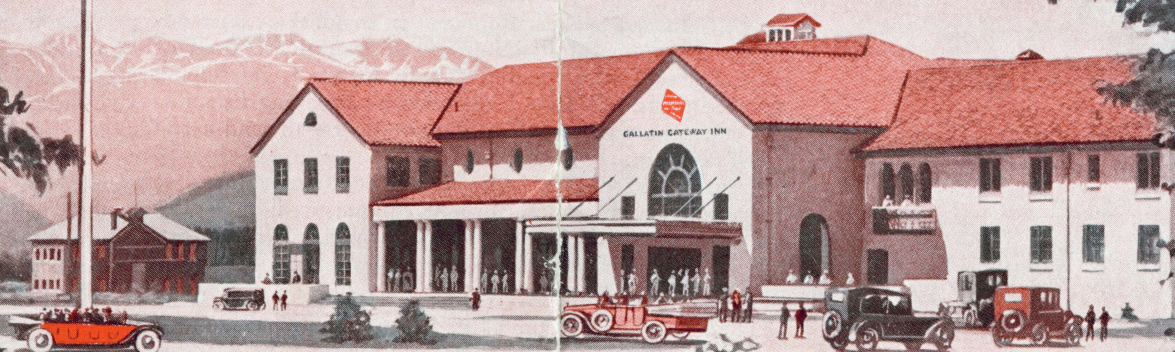


# GALLATIN GATEWAY INN

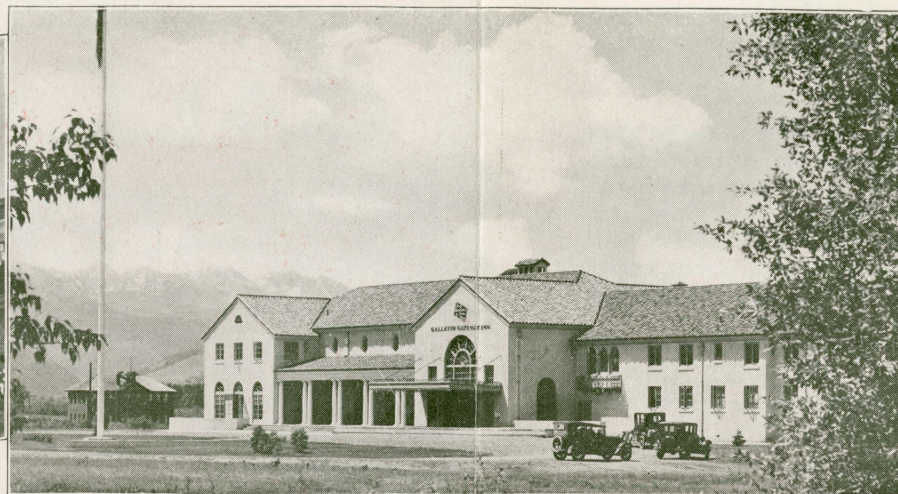
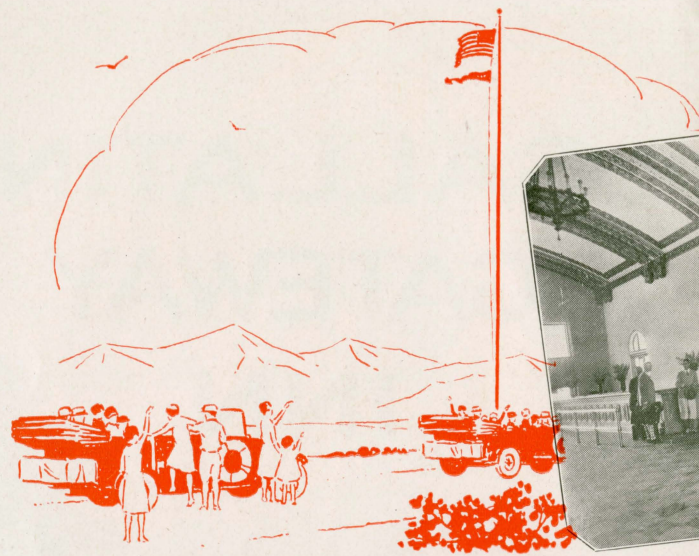
# GALLATIN GATEWAY INN



CHICAGO  
MILWAUKEE  
ST. PAUL  
AND PACIFIC

CHICAGO  
MILWAUKEE  
ST. PAUL  
AND PACIFIC





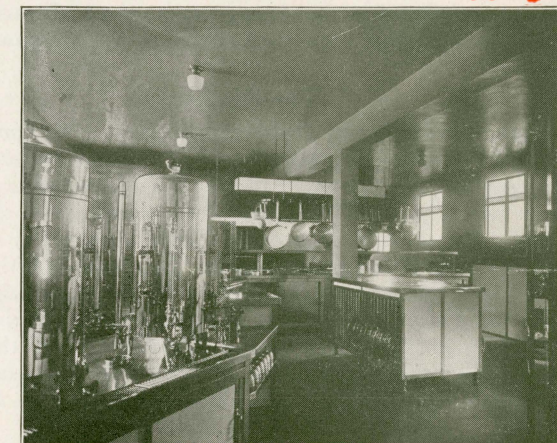
## The Beautiful GALLATIN GATEWAY INN Invites You!

**T**HE magnificent Gallatin Gateway Inn standing at the entrance of Yellowstone Park . . . halfway between Chicago and Seattle—Tacoma on the Chicago, Milwaukee, St. Paul and Pacific Railroad . . . is operated by the Sleeping and Dining Car Department of the Railroad, with the same intelligent and courteous service found on its trains.

"Milwaukee" built and owned, it is a splendid example of what "The Milwaukee Road" is doing to make Yellowstone travel more delightful and enjoyable. Last year thousands of visitors came to view the spectacular beauty of rugged, snow-capped mountains, vast forests, the oft told scenic marvels of Yellowstone. "The Milwaukee Road," ever anxious to be of the greatest service to the traveler, felt that its responsibility did not end merely

by transporting these visitors swiftly, safely and in the utmost comfort to their destination. Something more was to be done. To accommodate these discerning guests in a manner to the king born, to house them magnificently, dine them sumptuously and provide entertainment and an atmosphere equal to if not better than the most exclusive country club anywhere in the world, is the purpose and object of the Gallatin Gateway Inn.

Part of the Inn is given over to a terminal station for travelers to and from Yellowstone National Park and here, also, the big yellow motor coaches of the regular park transportation company begin and end their journey to the never-ending marvels of the "Land of the Magic Wand."



### The Exterior

The beautiful Spanish Romanesque building as it stands today more than fulfills its greatest expectations. Built of cream-colored stucco and modernly fireproof, its sloping red-tiled roofs, tall-arched windows, overhanging balconies and casement windows on the upper floor—all lend a real touch of Spain, the romantic.

Beauty and romance, however, have not been allowed to interfere with the practical. The equipment, both hidden and visible, is of the finest, providing the greatest comfort, safety and luxury.

### The Arrival at the Inn

Your Milwaukee train glides down into the valley and comes to a smooth, even stop. There, right before you, its sloping, red-tiled roof gleaming in the western sunshine, is Gallatin Gateway Inn. No need to bother about your hand baggage—the Inn's attendants will remove it from the train and deliver it to you after you have entered the Inn.

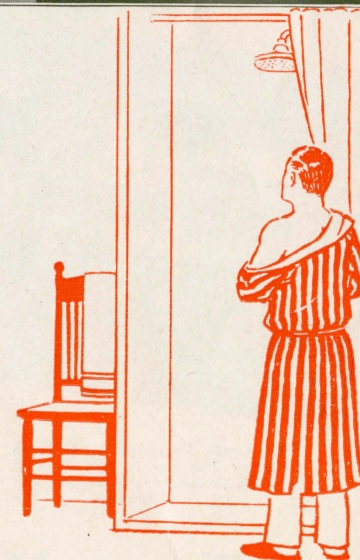
### The Foyer

The moment you step into the spacious foyer of this beautiful building you know that you are going to enjoy your brief or extended stay far beyond anything that you ever anticipated. You will be charmed with its unique arrangement and design, its lofty, arched ceiling colorfully decorated, its vastness. Here are the offices of The Milwaukee Road, telegraph, park transportation, hotel and lodge companies, the office of the hotel management and a curio shop. Here, also, are neatly-attired bellboys always courteous and ready to do your instant bidding.

North of the foyer is the commodious baggage room, where one may check all surplus luggage during the park trip. Here are rest-rooms with showers and all modern facilities to refresh the traveler. Adjoining are twelve dressing rooms, six each for men and women, designed especially for the use of travelers who remain only an hour or more between trains. Each dressing room has dressing table and mirror, etc., and is connected with tile shower bath.

### The Lounge

South of the foyer is the most attractive and impressive room in the Inn—the spacious lounge. Designed in a style that is typically Spanish, its lofty ceiling is decorated by huge, painted beams and its colorful tapestries and carpets are vivid, yet in good taste. An interesting feature is the huge fireplace around whose cheery warmth and glow the guests gather each evening to smoke and chat and play cards, or just to rest. At the south end is an artistic, wrought-iron stairway leading up to a balcony and to the bedrooms. French doors open upon wide verandas, from which one may watch the coming and going of the tourists, and enjoy a view of the broad lawns and beautiful mountains. The furnishings—the lighting fixtures—all have been carefully selected with "Milwaukee" thoroughness, and the general effect is that of a drawing room in the magnificent home of a Spanish noble. Attractive writing desks, a combination radio and phonograph, and grand piano are here for the convenience and entertainment of guests.



Gallatin Gateway Inn was built, and is owned and operated by The Milwaukee Road



# The Beautiful GALLATIN GATEWAY INN Invites You!

## The Dining Room

Words and pictures alone would hardly do justice to the beautiful dining room with a seating capacity of three hundred and fifty. One must sit down to a meal in this epicure's paradise to really appreciate how enjoyable a meal can be. There is only a short wait between the time of the taking of the order and the arrival of the food, but in that brief interval one's eyes wander to the windows and there one may see a view that is superb. To the east is the rugged Bridger Range—to the south, the snow-capped peaks of the Gallatin, their lower reaches covered with stately pines.

The arrival of the food interrupts these pleasant contemplations—and *such* food. The choicest delicacies are marshalled and set before you. Some of the fruits, vegetables and dairy products are obtained in the valley to insure freshness. The whitest of napery, sparkling silver and glass, and attractive tableware add to the enjoyment of the meals. The immaculately-clad and courteous young women employed in the dining room are all advanced students in the home economics course at the Montana State College.

## The Kitchen

Just a word, now, about the kitchen. No apology is needed for describing this splendid example of modern utilitarian efficiency. *Everyone* ought to know something about how food is prepared—it lends zest and interest to the food itself. The great kitchen of the Inn is a marvel of modern convenience, efficiency, sanitation. There is a gigantic crude oil range. There are broilers and ovens and steam tables and automatic electric devices of every conceivable variety and for every purpose. And what is the object of all these devices? Just this. To prepare the food under the most sanitary conditions possible—to make it pleasing to the eye

and to the palate—to get it to the table with the least possible delay. Just *one* meal and you'll know what we mean.

## The Bedrooms

The beautiful bedrooms of the Inn invite to restful sleep. They are all on the second floor and are attractively furnished, well-ventilated and spacious. Each bedroom is furnished in beautiful mahogany—artistic Spanish draperies at the screened windows, hot and cold running water or bath, comfortable guest chairs, attractive lamps, scatter rugs—all combine to present an atmosphere of beauty and refinement.

Rates are most reasonable. Single room, \$3.50; with bath, \$5.00. Double room, \$5.00; with bath, \$7.50. Connecting rooms with bath between, party of four, \$12.50; party of three, \$10.00; party of two, \$8.50.

## Our Invitation

We have told you briefly and sincerely just what we, at the Inn, are prepared to offer you. We could go on to tell you more about the Inn—more about the painstaking care that has been expended to landscape the grounds, to supply window boxes filled with lovely, flowering plants—little touches of color here and there that add so much to the attractiveness. We could speak of the spirit of service which animates every employee and representative of The Milwaukee Road.

But we're just going to do one thing, however, and that is, extend to you our most cordial invitation to come and see for yourselves.

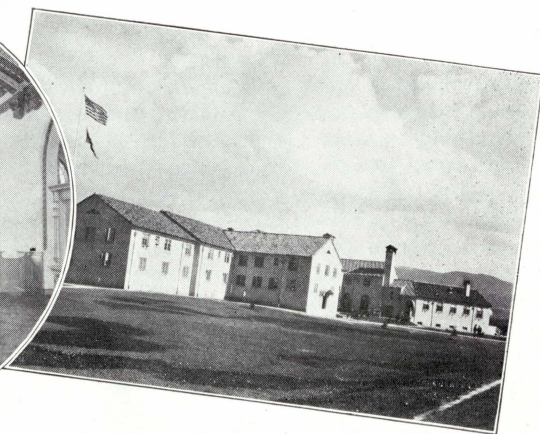
We assure you that the time you spend at the Gallatin Gateway Inn will be one of the most happy adventures that you have ever experienced.



The Great Entrance to Gallatin Gateway Inn invites you to step over its threshold and be magnificently entertained.



The spacious foyer is beautifully decorated and attractively furnished. Here are neatly-attired bellboys ready to do your instant bidding.



The first thing you see as you step off the train is the west view of the Inn, its sloping red-tiled roofs gleaming in the sunlight.

## Chicago, Milwaukee, St. Paul and Pacific Railroad

GEO. B. HAYNES

Passenger Traffic Manager, Chicago, Ill.

W. B. DIXON

General Passenger Agent, Chicago, Ill.