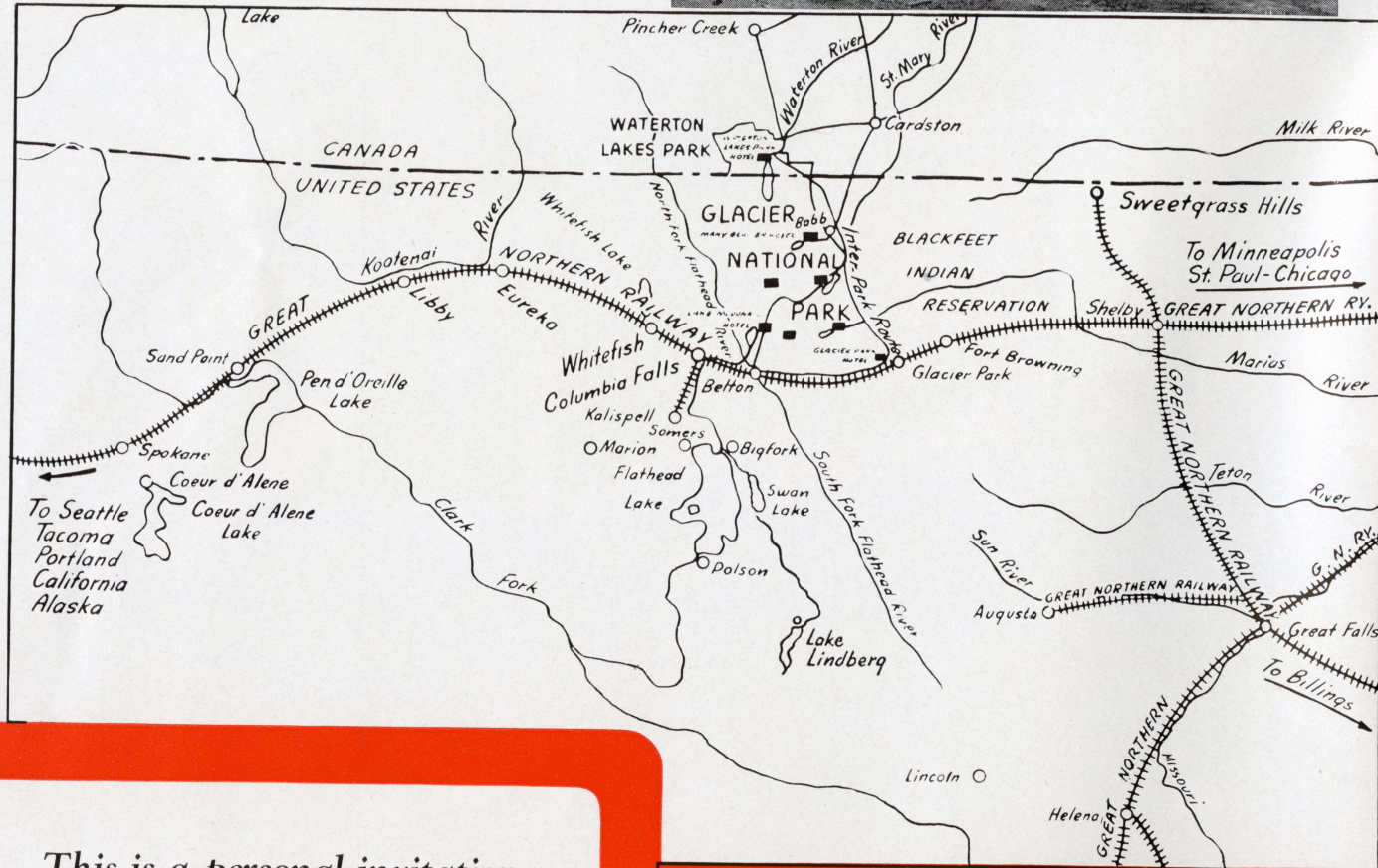
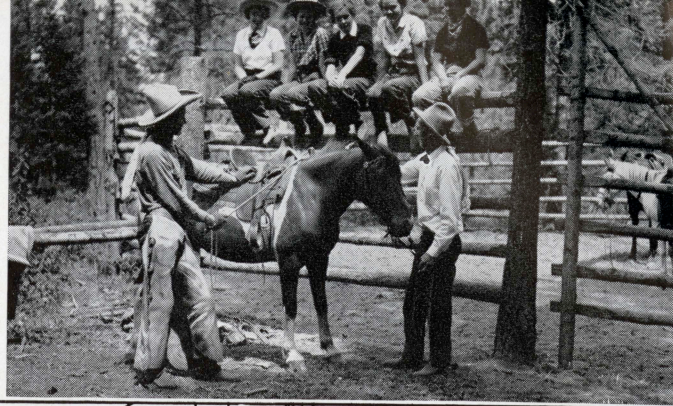


# VACATION ON A WESTERN DUDE RANCH



Go on the **EMPIRE BUILDER**  
via **GLORIOUS GLACIER PARK**

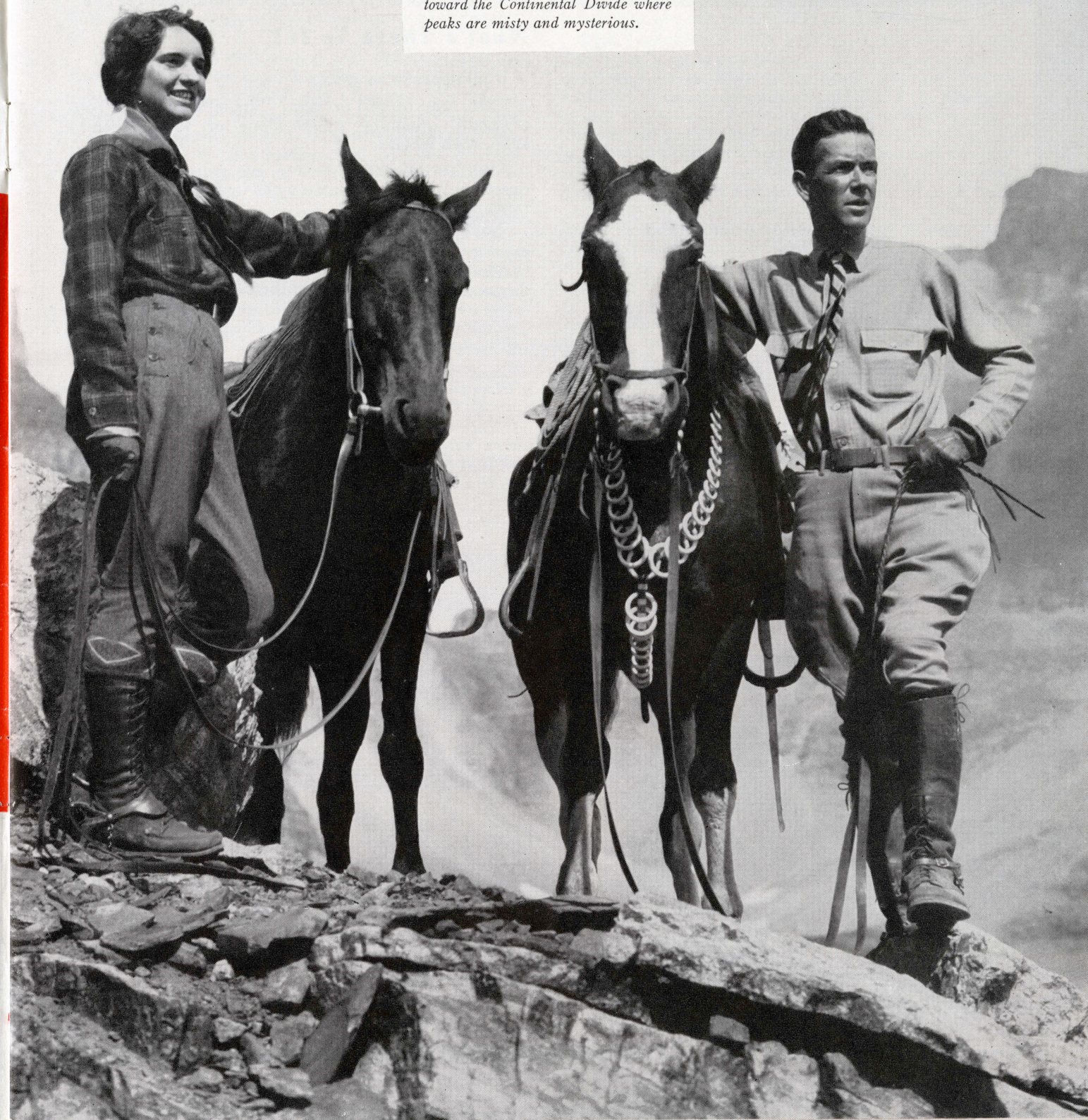
A vacation at a Dude Ranch is packed with hours of joyous living.



This is a personal invitation to write us for details and help for this—your greatest vacation.



From a high pinnacle the overlook is toward the Continental Divide where peaks are misty and mysterious.



# A Dude Ranch Vacation?

## What's There To It?

It all depends on *you*.

First, are you girl or man? Single, married or betrothed? Planning to go alone or with others? If so, with whom?

After settling these points, we get down to the question, what does one do while loafing on a western ranch?

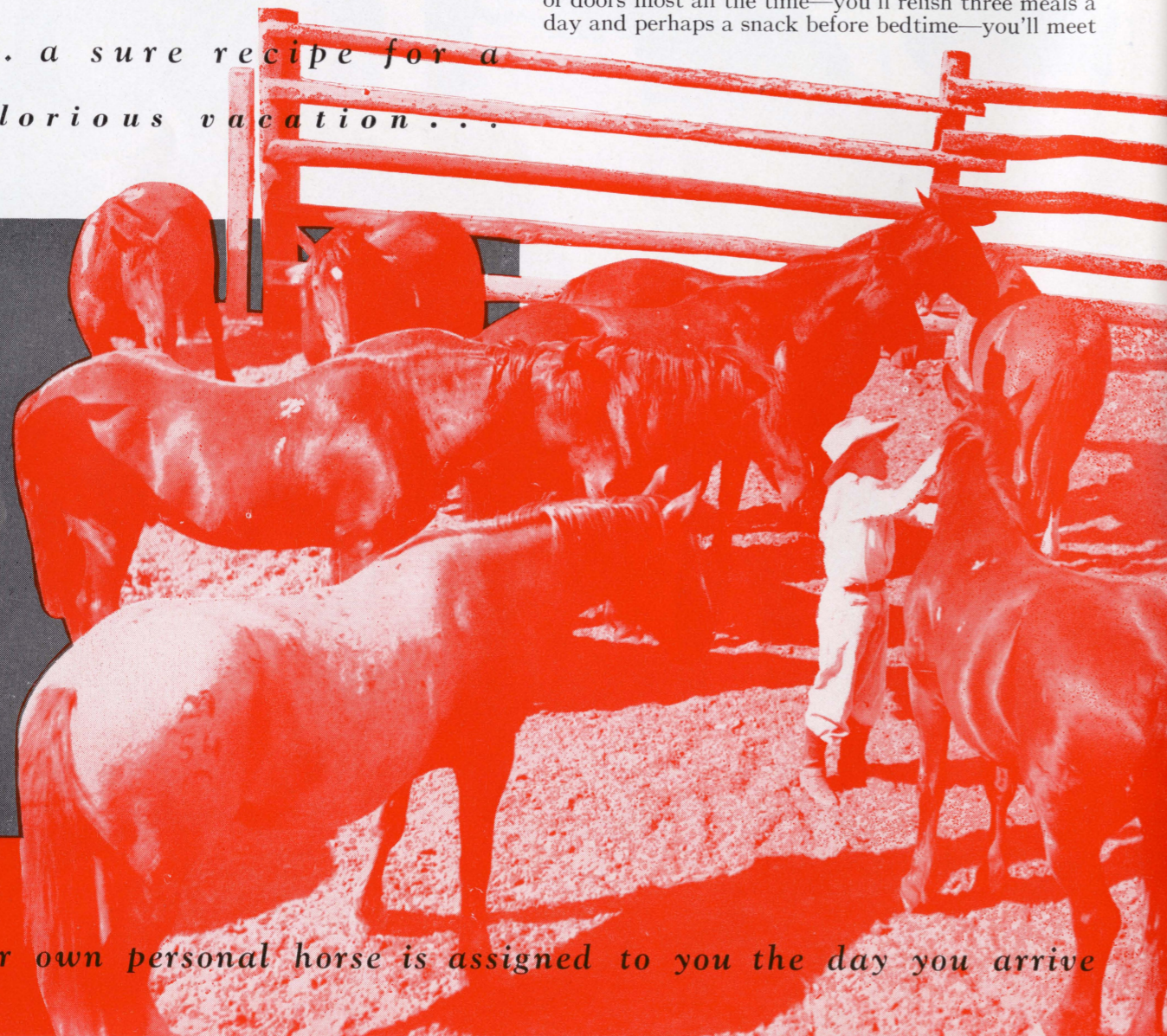
You'll ride—it's easy the way the cowboys teach you—you'll hike of your own free will—you'll be out of doors most all the time—you'll relish three meals a day and perhaps a snack before bedtime—you'll meet

**H O R S E S . . . D U D E S**

**. . . W R A N G L E R S . . .**

**SCENERY . . . more HORSES**

*. . . a sure recipe for a  
glorious vacation . . .*



*Your own personal horse is assigned to you the day you arrive*

nice people—you'll ride into the golden sunset for the thrill of seeing the copper moon ride from a purple hilltop. You'll sleep as if you could never get enough of it.

You may hesitate because you don't happen to know any ranch owners who take summer guests.

Don't let that worry you, because the Great Northern Railway knows every rancher whose place is described in this booklet. Our representatives visit the ranches from time to time. Thus, when a Great Northern agent makes a reservation for you it is like a personal letter of introduction.

The people from the ranch will meet you at the Great Northern Railway Station with a car or a station wagon. As the Empire Builder pulls away you'll wonder what the ranch, its owners and the other guests will be like. But before the first week is out, you'll feel like staying all summer. The western sunshine and ozone will store into you a winter's supply of Vitamin D, and the warmth of western hospitality will make you feel perfectly at home.

As for the choice of a ranch, there is no finer selection than the dude ranches served by the Great Northern Railway in Montana, Idaho, Washington, Oregon, Alberta, and British Columbia. Each year the ranches in this area grow more popular. They offer medium altitudes, bracing atmosphere, sunny days, with long northern twilights, star-sprinkled nights, many clear streams and lakes . . . prairies, foothills and mountain ranges . . . wherever you hang up your city clothes, you'll find courtesy and attention to your comfort.

The Dude Ranch Vacation season varies. Some of the ranches take guests only during the summer—June to October; others stay open until late fall for hunting parties; others operate for a period in winter when conditions are right for winter sports—skiing, skating, tobogganing, while some are glad to have guests at any time of the year. The periods from May 1st to June 15th and from September 1st to November 1st are ideal for ranch vacations if you can get away from your regular routine in the spring or fall. The freshness and beauty of flowers, shrubs, mountains, valleys and high plains of the Dude Ranch country and the routine at the ranches which comes with nature's renewal of life in the spring makes May and June dude ranching more than ordinarily enjoyable. In the fall, throughout most of Montana and the Northwest, for that matter, the woods, hills and plains are a riot of color . . . days are warm and quiet

from the sun out of blue skies . . . and nights with millions of stars "almost within reach" through the crisp clear air, are beautiful beyond description.

This booklet will help you select the type ranch you'd like to visit but it is suggested that you correspond with one or more of the ranch operators before making a definite commitment. Many of the ranchers expect an exchange of references before making reservations for guests and while every possible effort is made to publish accurate information about ranches in this booklet, particularly with reference to rates and discounts, the data which can be given on each individual ranch is necessarily incomplete. All of the ranchers given representation in this booklet will promptly and honestly answer any questions about themselves and the accommodations they offer. If they feel that you would not be happy at their particular resort they will tell you so—and perhaps recommend another place which they think would be more to your liking. Many of them publish their own descriptive folders which they are glad to send to prospective guests. The Great Northern representatives also will be glad to answer questions and when you have finally settled on the ranch at which you would like to spend your vacation, they will make both ranch and train reservations for you.

Whoever you are, girl or man, footloose and fancy-free, or happily married, come on out this summer. To a dude ranch in the Great Northern country. You'll love it.

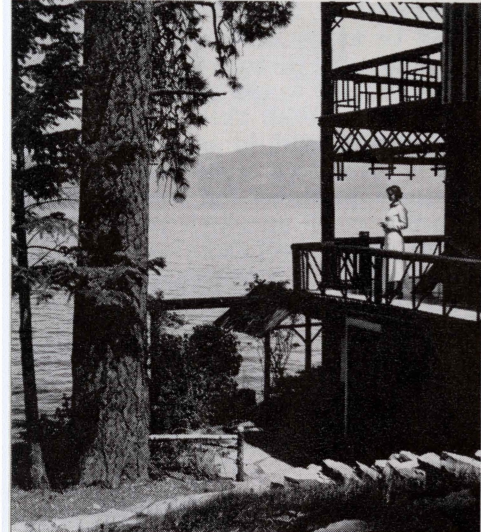
\*Reference to this Great Northern publication in your correspondence with Dude Ranch Operators will be appreciated.



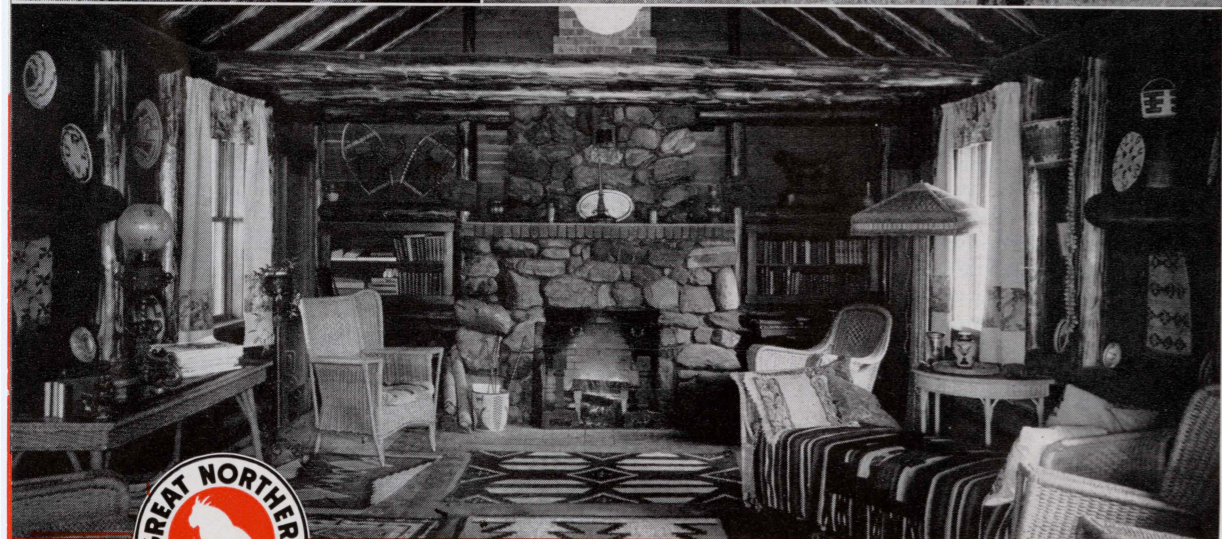
*With a galloping stream for a battleground,  
meet and conquer gamey western trout . . .*



*Ranch houses are as individual as their surroundings, and this one is typical of attractive vacation homes awaiting you.*



*Some of the ranch houses were specially built for guests; others are modernized western homes, and several provide cabin accommodations.*



*Comfort and friendliness are predominant characteristics of Dude Ranch houses. In such spacious living rooms as this one you can spend enjoyable evenings with congenial people.*

### Allan Ranch (K Bar L)

Augusta, Montana

Beyond all roads in the Rocky Mountains, at the Forks of Sun River, in the Lewis & Clark National Forest and Wilderness area. Excellent horses with hundreds of miles of mountain trails to ride and explore; many miles of good trout streams; pack trips through Sun River Country and South Fork of Flathead; big game hunting in season; natural warm springs swimming pool; good log cabins, meals and beds. Western, mountain ranch atmosphere and life. Altitude 5,000 feet. Weekly rates \$50.00 to \$65.00, which includes saddle horse. \$10.00 round trip transportation from Great Falls to ranch (80 miles). Excellent accommodations for 24 guests. Owner-Operator: Mrs. Ralph Allan. Postoffice, telegraph and telephone station, Augusta, Montana.

### Arps Ranch

Augusta, Montana

Eighty-two miles from Helena, 76 miles from Great Falls, 18 miles from Augusta, Mont., on privately owned land in Lewis and Clark National Forest. Buildings: Ranch house, individual guest cabins, bath house, barns, corrals, etc. Accommodations for 12 guests at one time. 32 head Arabian and Morgan horses, well broken and gentle. Good riding equipment. Recreation: Riding, fishing, hunting (in season) and all the home activities of a typical cattle ranch where guests are taken. Altitude 6,000 feet. Rate: \$40.00 per week per person—includes everything but personal laundry. No charge for transportation Great Falls to ranch. Owner-Operator: John F. Arps, P. O. address, Augusta, Mont.

### Baker's Guest Ranch (7 Lazy P)

Choteau, Montana

Thirty miles west of Choteau, Montana, in the Rocky Mountain Division of the Lewis and Clark National Forest, surrounded by towering peaks, cold clear streams and beautiful evergreen forests. Good fishing and hunting in season. Saddle horse trips to scenic points daily, accompanied by reliable guide. Dependable mountain trained horses and genuine western saddles. Fully equipped to handle parties on camp pack trip. Altitude 5,300 feet. Cool, clean cabins, excellent beds; meals served family style. Accommodations for 16 guests. Rates: \$50.00 per week. Rates for hunting and pack trips on application. Rates include transportation from either Great Falls or Choteau, Montana. Owner-Operators: Mr. and Mrs. Jack Baker, P. O. Box 297, Choteau, Montana.

### Bar X 6 Ranch

Babb, Montana

Forty miles from Glacier Park Station on Great Northern Railway—on Duck Lake, Blackfeet Indian Reservation; 10 miles from Canadian boundary; 16 miles from Many Glacier Hotel. Altitude 5,000 feet. Frame buildings on concrete foundations; shingled roofs and sides. Accommodations for 30 guests. Good beds; good food; riding, swimming—all activities found on large horse ranch. Will meet guests at Glacier Park Station. Makes no charge for their transportation to and from ranch. Rates from \$35.00 to \$40.00 per week per person (all inclusive). Reductions on application for groups. George W. Noffsinger, Pres. P. O. address: Babb, Montana. Telegraph address: Glacier Park, Montana.

### Brander's 2 B Ranch

Fort Steele, British Columbia

Eleven miles from Cranbrook, B. C. in the Canadian Rockies, 190 miles from Spokane, Wash. and reached from there via Spokane International—train leaving Spokane daily 11:45 p. m. and arriving Cranbrook, B. C., 8:00 a. m. Taxi charge from Cranbrook to ranch, \$1.00. Altitude 2,550 feet. Buildings: ranch house—main floor recreation room, dining room, kitchen, bathroom, large porch; second floor, three large bedrooms and parlor; several cabins, barns, corrals, bath house, dairy, etc. Accommodations for 8 guests. Good saddle horses and equipment. Rate: \$25.00 per week per person; 10% reduction for stay of one month. Owner: Mrs. B. Brander. Operators: Mrs. B. Brander and Mrs. N. C. Rice. Postoffice and telegraph address: Fort Steele, B. C.

### Circle 8 Ranch

Choteau, Montana

Twenty-six miles from Choteau, Montana, on north and south forks of Teton River, adjoining Lewis and Clark National Forest. Accommodations consist of 1, 2 and 3-room log cabins, bath houses (toilets and showers) and main lodge housing kitchen, dining room and guest lounge. Altitude 5,100 feet. Accommodations for 14 guests. Good beds, best of food and good horses. Recreational activities: horseback riding, swimming, hiking, dancing, fishing, hunting in season (bear, goat, elk and deer). Outfitters for pack trips. Ranch may be reached from Great Falls, 84 miles; from Shelby, 90 miles; from Glacier Park, 114 miles. No charge for transportation to ranch from Choteau. From other points the charge is \$10.00 for the round trip. Rate: \$45.00 per week per person. K. H. Gleason. Postoffice: Choteau, Montana, Box 455.



*Picturesque and hospitable ranch houses provide solid comfort and homey meals...*

**Circle W Ranch**  
Ovando, Montana

Eighty miles northwest of Helena, Montana, in Blackfoot River valley, by automobile. Facilities consist of ranch house with large recreation room, guest cabins among the trees, affording seclusion and privacy. Cabins are two and three rooms with bath. Activities are the usual ones found on a typical mountain ranch, situated in fine riding country. Circle W does not take guests for less than a two weeks' stay. Accommodations for 24 guests. It is necessary for prospective guests to make arrangements in advance. Rates are from \$50.00 to \$70.00 per week per person, with discounts for parties of four or more and for individuals staying four weeks or longer. Charge for transportation from Helena to ranch and back to Helena, \$10.00 per person. Mr. George F. Weisel. Postoffice: Ovando, Montana.

**CM Quarter Circle Ranch**  
Kila, Montana

Fifteen miles from Kalispell, Montana, on the boundary of the Blackfoot National Forest, and 40 miles southwest of Glacier National Park. Miles and miles of beautiful wooded trails; vast expanses of open country to ride over, fishing the streams or swimming in the ranch lake, going for an old fashioned hayride, cooking steaks over the camp fire, or just sitting on the corral fence—it's the place to have relaxation and fun.

The C M Quarter Circle accommodates 30 guests and consists of a typical ranch house with dining room, kitchen, living room and screened veranda. Rustic log cabins with running water and electric lights, barns, corrals, blacksmith shop and lastly the "Whinner and Snort," combination tack and club room. There is an ample green garden, cows, chickens and horses.

Free transportation from Kalispell to the ranch (and when the tires wear out, we'll call for guests in the old stage coach pulled by four horses). Rate per week, including all expenses on the ranch as well as private horse and guide service, \$50.00. Discount for parties of four or more and for periods exceeding two weeks.

For further information write the business office of the C M Quarter Circle Ranch, 2906 Harvard North, Seattle, Washington.

**Covington Lodge (T Bar 8 Ranch)**  
Swan Lake, Montana

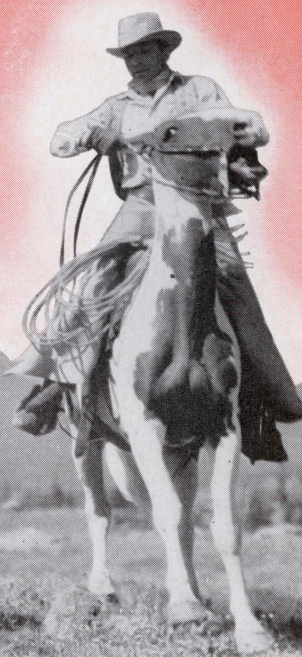
Thirty-eight miles from Kalispell, Montana, on south-east shore of Swan Lake between Mission and Swan Ranges of the Rockies, in the Flathead National Forest. Altitude 3,100 feet. Will meet guests at Kalispell or they can take bus from Kalispell to Big Fork and be met there. Lodge is large story and half frame and log building with two verandas facing the lake. Has large living room with fireplace, dining room, kitchen and ten bedrooms; two bathrooms. Ranch raises Hereford cattle, has 500 acres of pasture and puts up 250 tons of hay. Accommodations for 40 guests. Maintains 5 cabins for light housekeeping. Accepts transient patronage. Ranch has 25 western horses and good riding equipment. Good fishing, hunting in season, swimming, boating. Rates from \$40.00 to \$50.00 per week per person without the use of saddle horses; \$1.00 per day extra for horses if used each day; \$2.50 per day for horses for occasional rides. Will meet guests at Kalispell; \$5.00 each way for one person, \$1.00 extra for each additional person. Operators and owners: Mr. and Mrs. E. M. Covington. Postoffice address: Swan Lake, Montana. Telegraph address: Kalispell, Montana.

**Deep Canyon Ranch**  
Choteau, Montana

Twenty-eight miles northwest of Choteau, Montana, on the north fork of the Teton River and just south of Glacier National Park, this ranch comprising 2,200 acres nestles in a region of primitive beauty, surrounded by high mountains. Altitude 4,800 feet. Riding, fishing, swimming and pack trips are the outstanding attractions and of course, in season, big game hunting is also added. Many beautiful and historic trails lead over open country and into the mountains. Accommodations for 10 or 12 guests in well built and nicely furnished log cabins. For illustrated folder and rates write or wire J. W. White, Deep Canyon Ranch, Box 728, Choteau, Montana.

**Diamond Cross Ranch<sup>1</sup> (Seebe, Alberta)**

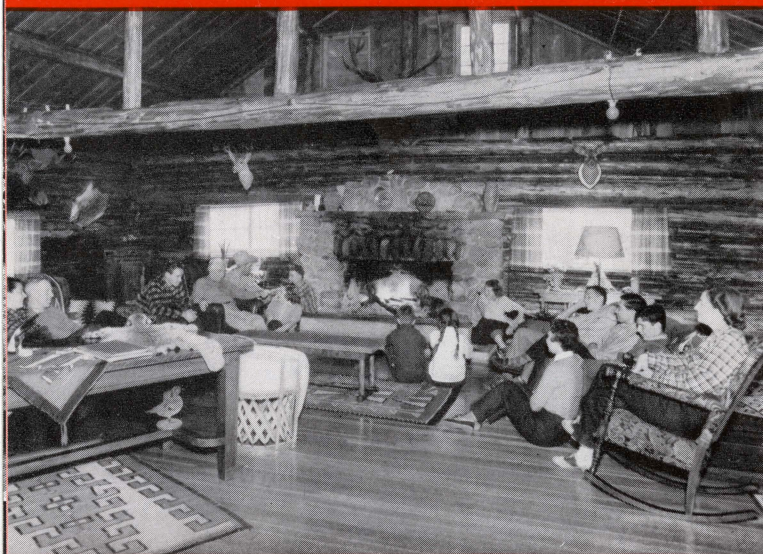
Five miles from Seebe, Alta., Canada, on C. P. R. Reached from Great Northern Ry. at Glacier Park by Waterton Lakes-Banff bus to Seebe. Ranch is 55 miles from Calgary. No charge for transportation from Seebe to Ranch. Location is close to Banff Park and flanks Stoney Island Reserve. North and east boundaries are Kananaskis and Bow Rivers. The whole area is a game preserve and wild life abounds. There is a mile long lake in front of buildings. Main building of logs has lounge 50 x 24 feet and large rock fireplace. Rustic furnishings. Connected by rock passage to dining room. Private lodge of logs with lounge and rock fireplace; 3 bedrooms and bathroom; four log cabins with private bathrooms; four frame cabins without baths but with hot and cold water. Office, power house, two bath houses behind frame cabins, extensive corrals, barns, etc. Accommodations for 20 guests. Good beds, best of food, 25 top "dude" horses. Pack trips. Good trout fishing. Hunting in season. Rates: \$35.00 to \$45.00 per week per person. Reduction of 10% for parties of 12 or more staying over a month. Owners and operators: Mr. and Mrs. B. O. Starkey. Postoffice and telegraph address: Seebe, Alta., Canada.



*The cowboys will soon have you feeling at home on a horse...*



*A top hand demonstrates his skill with a lariat.*



*Above—Comfort and convenience without "frills".  
Below—A typical Montana dude ranch saddle room.*



### Diamond Willow Ranch Shelby, Montana

Thirty-five miles north of Shelby, Montana, in the Sweet Grass Hills. This is a real cattle ranch, 8,000 acres, operated for boys from 8 to 16 years of age. Accommodations limited to 10 boys at one time. Altitude 3,700 feet. Rancher's own home is located adjacent to boys' cabins. These are log cabins furnished in "bunk house" fashion. Simple, wholesome meals are served; plenty of fresh vegetables, milk and cream are included in daily menus. Activity—daily routine of life on a cattle ranch. Each boy has his own horse and saddle and time is taken up out of doors learning a cowboy's job of wrangling, roping, branding. Week-end pack trips are made to nearby points of interest and one week-end motor trip to Glacier Park and the Blackfeet Indian Reservation. Latter trip is optional with guests. Rates upon request. Owners-operators: Mr. and Mrs. J. C. Toole. Postoffice address: Shelby, Toole County, Montana.

### Diamond S Ranch and Inn Boulder Springs, Montana

Thirty miles south of Helena, 36 miles north of Butte, Montana, and three miles from the Great Northern Ry. station of Boulder. Altitude 5,000 feet. Consists of mission style 125-room hotel with lobby 100 feet long. 200-foot veranda runs full length of hotel—and 1,000-acre tract. Accommodations for 200 guests. All rooms with hot and cold running water—some rooms with private bath. No cabin or housekeeping facilities. Source of drinking water piped throughout hotel—springs. Maintains dairy herd and serves vegetables from own garden. Raises horses and maintains cavy of from 80 to 100 saddle horses. Destinations for trail rides: Ghost town of Elkhorn 10 miles, Morrison Cave, Crow Mountains, Bull Mountains, Continental Divide and many excellent fishing lakes. Large outdoor swimming pool. Hotel is operated year around—in summer for ranch vacationists and transient tourists and in winter as a winter sports resort. Conducts pack and hunting trips in season. Rates: By the day \$5.00 to \$7.50, American Plan. By the week \$35.00 to \$50.00. Discount of 10% to parties staying 2 weeks or longer; also discounts to organized groups. No charge for transportation from Boulder to ranch. Owners and operators: Mr. and Mrs. C. L. Smith\*, Boulder, Mont.

\*Mr. and Mrs. Smith are thoroughly seasoned dude ranch people, having previously operated the Mill Creek Ranch near Livingston, Montana, for a number of years.

### Diamond X Ranch Rollins, Montana

On the shore of Flathead Lake. Altitude 3,000 feet. 27 miles from Kalispell, Montana, and 40 miles from Whitefish, Montana. All guests are met at train and returned at no extra charge. Long or short trail rides, boating, swimming, hiking, fishing, hunting in season; good horses and competent guides. Accommodations for 16 guests in new, modern cabins. Comfortable beds and good food. Rates from June 1st to November 1st, \$50.00 per week per person, one in room; \$45.00 per week per person, two in room. All-expense big game hunting pack trips, \$150.00; all-expense summer pack trips, \$12.50 per person per day. Guy Clatterbuck. Postoffice: Rollins, Montana.

### E Bar L Ranch Greenough, Montana

One hundred fifty miles from Belton, Montana, in the big Blackfoot valley at the junction of the Blackfoot and Clearwater Rivers. Altitude 3,900 feet. Meets guests at Belton. Transportation to ranch from Belton \$20.00. Log cabins of one, two and three double rooms, each cabin containing bath with hot and cold running water. Horseback riding, swimming, fishing, camping trips. Hunting in season. Rate: \$65.00 per week per person (June 1 to November 1) including saddle horse. Owners and operators: Mr. and Mrs. O. W. Potter, Mrs. Dorothy P. Benedict and Gordon Erickson. Postoffice address: Greenough, Montana. Telegraph address: Missoula, Montana.

### Haggin Ranch (Y Bar P) Anaconda, Montana

Fifty miles southwest of Butte, Montana, in Georgetown Lake area of Deer Lodge National Forest—near Anaconda Pintlar primitive area. Altitude 6,300 feet. Will transport guests arriving Butte on Great Northern Ry. to ranch and back, without charge. Lodge of rustic design, with hardwood floors—houses kitchen, dining room, office and guest lounge and sleeping quarters for a few guests. Most of guests housed in permanent cabins. All cabins comfortable and well furnished. No cabins with private baths but all have toilets and are electric lighted. Two well equipped bath houses—showers and tubs and flush toilets. Ranch has 35 head of well broken saddle horses. Good riding country; good fishing; hunting in season. Winter sports—January 1st to April 1st. Summer season—June 15 to September 15. Summer rates: \$55.00 to \$65.00 per week per person. Winter rates: \$40.00 to \$45.00 per week per person. Manager: Charley Beal. Postoffice address: Anaconda, Mont.

### Jennings Hard Trigger Ranch Glacier Park, Montana

Six miles from Glacier Park by saddle trail; 15 miles by auto road. Altitude over 5,000 feet. In Lewis and Clark National Forest on western border of Blackfeet Indian Reservation. Accommodations for 24 guests in well built and neatly furnished cabins—comfortable beds—excellent meals served family style. Fully equipped to outfit and conduct pack trips, hunting and fishing parties. Rate \$42.00 per week per person. Includes use of saddle horse. Makes reduction for guests staying longer than four weeks. Mr. and Mrs. George Jennings. Postoffice: Glacier Park, Montana.

### K Bar Ranch Coeur d'Alene, Idaho

Located on new Fernan Lake Forest Highway—5 miles east of Coeur d'Alene, Idaho and 38 miles from Spokane, Washington. Altitude 2,171 feet. Accommodations for ranch vacationists and transients in cabins and main ranch house. Some cabins equipped for light housekeeping, 20 head good saddle horses. Good fishing in nearby lakes and streams. Swimming in Coeur d'Alene and Hayden Lakes. Rates: By the day \$5.00 to \$7.00. By the week \$35.00 to \$49.00 with 10% discount to guests staying a week or longer. No transportation charge from Coeur d'Alene to ranch for guests staying a week or longer. Operated year around by Mr. and Mrs. John W. Kelly, R. 3, Coeur d'Alene, Idaho.

### Kintla Ranch (Lazy B M) Trail Creek, Montana

Forty-three miles from Belton, 53 miles from Columbia Falls, Montana, adjoining Glacier Park. Altitude 3,853 feet. Meets guests at Belton or Columbia Falls, \$5.00 per person for transportation each way from railroad station to ranch and return. Main lodge—log construction—containing reading room and lounge with fireplace; two porches, dining room and kitchen. Log sleeping cabins are on bench 18 feet above ranch house and facing mountains to east. Bath house, laundry and pump room. Accommodations for 36 guests. Meals served family style. Fresh vegetables from ranch gardens. Has own poultry and provides fresh eggs for table use. An outside fireplace where outdoor camp meals are prepared and evening entertainment is furnished. Good saddle horses and equipment. Excellent fishing, hunting in season. Rate: \$21.00 per week per person. Horses furnished at additional \$2.00 per day. Operators and owners: Mr. and Mrs. Matt Brill. Postoffice address: Trail Creek, Montana. Telegraph address: Belton, Montana.

*There is no set entertainment program for the ranch guest. He may do as he pleases.*





*There are special ranches just for girls or boys where the youngsters get the touch of nature that is the rightful heritage of young people of any years.*

**Captain Laird's Lodge (Diamond L Bar)**  
**Seeley Lake, P. O., Montana**

In one of your country's last remaining primitive areas. At an altitude of 4,350 feet in the Rocky Mountains on the shore of Lake Lindbergh and the banks of Swan River, Captain Laird has built a hospitable lodge and private cabins. Buildings are of logs, furniture of rustic design. A rare combination of forests, lakes, bathing beach, streams, mountains, horseback riding, camping and fishing trips, scenic trails, comfort and informality will be found in this land "chuck" full o'hush. Big game hunting in season: grizzly, black and brown bear, elk, deer and mountain goats. Accommodations for 25 guests. Good food and beds. No house-keeping facilities. Weekly rates: \$45.00 to \$70.00 according to accommodations desired, electric lights and modern facilities. Transportation from Belton to Lodge, \$10.00 per person. Owner-Operator: Captain Eli Laird, Seeley Lake, P. O., Montana. Telegraph address: Missoula, Montana.

**Lazy B B Ranch**  
**Libby, Montana**

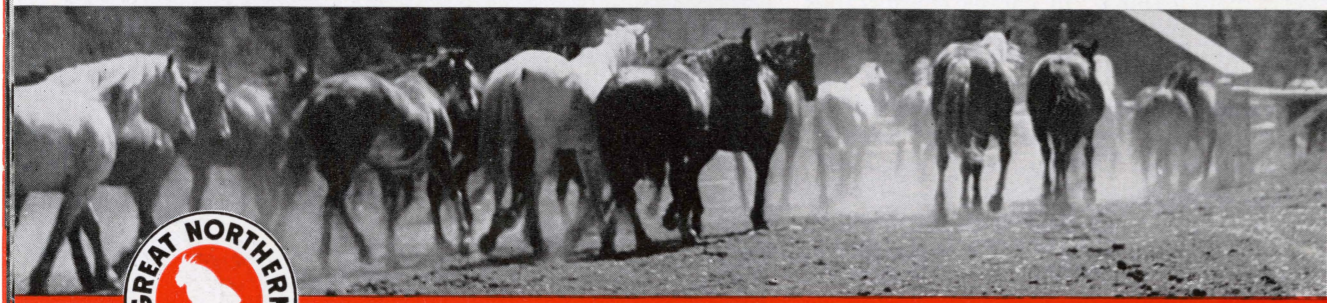
Twenty-two miles from Libby, Montana. Altitude 2,200 feet. Meets guests arriving via Great Northern Ry. at Libby. Makes no charge for transportation to ranch. Main lodge contains living room with fireplace, dining room, separate kitchen, 4 bedrooms; 2-room furnished log cabins and 4-room old log house near main lodge. Also shower bath house. Accommodations for 24 guests. Has about 20 head of good saddle horses; good riding equipment. Good fishing and hunting in season. Rate: \$35.00 per week per person including use of saddle horse. Special rates for groups or individuals staying longer than one week; also for children. Owner: Bert S. Hind. Operator: Harry K. Waylett. Postoffice and telegraph address: Libby, Montana.

**Lazy F Ranch**  
**Ellensburg, Washington**

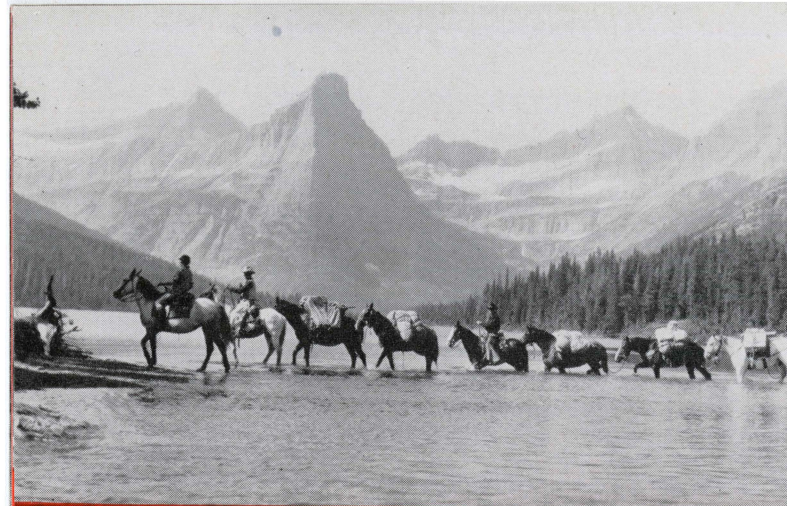
In Menastash Canyon on the eastern slope of the Cascade Mountains, four miles from Snoqualmie National Forest. Altitude 2,700 feet. Ranch house consisting of lounge and recreation room, kitchen, dining room and four bedrooms. Guest cabins on mountain stream 200 feet from ranch house. All buildings equipped with electric lights, hot and cold running water and showers. Accommodations for 32 guests. 40 head of good saddle ponies. Good fishing and hunting in season. Badminton, archery, trap shooting and swimming. Pack trips of two or three days into the mountains are provided without additional charge to those who are guests for a week or longer. Rates: \$40.00, \$45.00 and \$50.00 per week per person; one-half rate for children under 12 years of age, when accompanied by parents. Owner-operator: Jack McGrath. Postoffice and telegraph address: R.F.D. 1, Ellensburg, Wash.



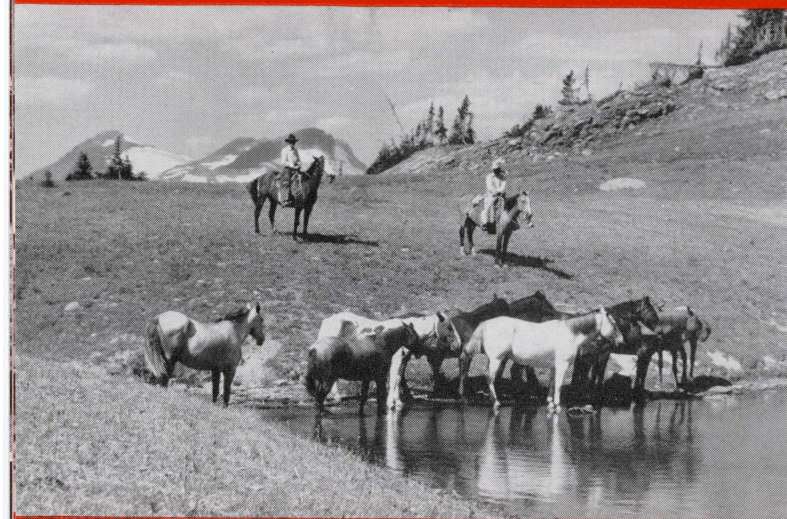
*Varied Dude Ranch activities make up the most fascinating kind of vacation. From early morning until long after supper, new and exciting things keep the fun at high pitch. Take your pick of pastimes from pleasurable loafing to any of the many exhilarating sports.*



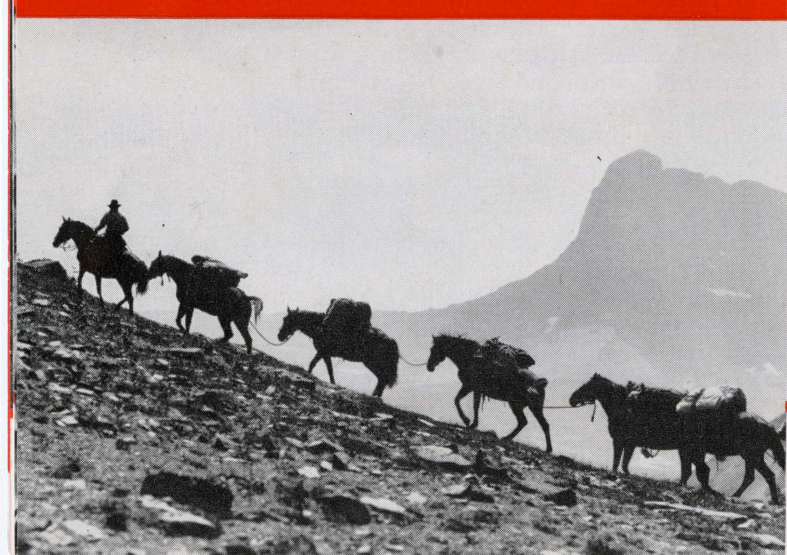
*To the music of creaking saddle leather, ride your cares away*



*Pack trails lead where roads never run—*



*Above—To points of interest far above the timber line. Below—A guide leads while pack horses bring equipment and supplies.*



### **Lazy T Ranch Joseph, Oregon**

An operating horse ranch, 120 miles from Pasco, Wash., on S. P. & S. Ry. Located on Wallowa Lake and borders the Eagle Cap Primitive Area. Glaciers, snow-capped peaks, alpine meadows, 60 lakes and hundreds of miles of trout streams within a few miles. The deepest canyon in the world—Hell's Canyon of the Snake River—25 miles due east (6,000 feet deep.) Altitude at ranch, 4,300 feet. Charge for transportation from railway station to ranch and return, \$7.50 each way per person. All buildings are of logs. Ranch house has nine guest rooms and there are four log cabins. Good food and accommodations. Excellent fishing. Elk, deer, bear and cougar hunting in season. Rates: \$45.00 to \$60.00 per week per person. Special rates for families and groups. Owner and manager: Chuck Oswald. Postoffice and telegraph address: Joseph, Ore.

### **M Lazy V Ranch Marion, Montana**

Twenty-nine miles west of Kalispell, Montana. High class ranch with miles of excellent scenic trails, good horses, fine food and good beds. Accommodations for 30 guests in log cabins. Bath houses conveniently close. A real "cattle" ranch. Fishing, swimming, horseback riding. Rates: \$45.00 weekly, \$40.00 per person for two in one cabin; includes horse and guide; reductions for longer stay. Free transportation to ranch. Charge is made only for extra baggage which has to be transferred by truck. Mrs. A. M. Moore, Marion, Montana.

### **Mad River Ranch Leavenworth, Washington**

Thirty miles from Leavenworth and 50 miles from Wenatchee, Washington, on Great Northern Ry., in northeast section of Wenatchee National Forest. Swimming, horseback riding in scenic mountain meadows and over forest trails; fine fishing; all species of trout may be caught. Special arrangements may be made for climbing nearby mountain peaks and glaciers. Extensive pack trips to any section of the Cascade Mountains. 20 guests can be accommodated comfortably at one time. Guests from the East are met at Wenatchee, those from West at Leavenworth. Charge for transportation, Wenatchee to ranch, is \$10.00 for the round trip. Rate: \$37.50 per week per person; 10% off for stay of 3 weeks or longer. Alfred H. Constans, Leavenworth, Washington.

### **Metolius Circle M Ranch Camp Sherman, Oregon**

Forty miles northeast of Redmond, Oregon, 38 miles northeast of Bend, Oregon, on Oregon Trunk R. R., 155 miles from Portland, Oregon. In Deschutes National Forest on the Metolius River. Altitude 2,980 feet. Will meet guests coming Great Northern Ry. at Portland. Charges \$9.00 each for one to three persons; \$5.00 for each additional guest for transportation to ranch. Transportation charge from Bend or Redmond, \$2.50 each. Ranch house, 2 stories, 6 bedrooms, modern, electric heat, 2 dining rooms, large living room and dance room. Seven modern cabins include electric heat. Accommodations for 25 guests. Fine string of good saddle horses. 1100 miles of beautiful mountain trails. 23 lakes within 20 miles. Fine fishing on ranch property and many mountain lakes and streams. Hunting in season. Rates: \$40.00 to \$50.00 per week per person. Children under 10, half rate; under 14, three-fourths rate. Pack trips every week. Manager: Curtis Green. Postoffice address: Metolius "Circle M" Ranch, Camp Sherman, Oregon.

### **Methow Valley Ranch Winthrop, Washington**

Situated in the upper Methow Valley—35 miles from Canadian border in the Northern Cascades. Three miles of Chewack River runs through ranch. Adjoins Chelan National Forest and primitive area. Altitude 2,000 feet. Reached from Great Northern Station at Wenatchee. Spread consists of main ranch house in which there is a large living room, with fireplace; kitchen and dining room; 5 bedrooms, 2 baths with showers and tubs, porches, etc.; 2 frame guest cabins, recreational hall, guest bunk house, 15 car garage, barns, etc., and private residence for owner—all electrified. Accommodations for 20 guests. No facilities for housekeeping. Gravity water system. Source of water—mountain springs. Has own dairy herd, poultry and vegetable garden. Thirty head of good saddle horses and competent guides. Offers trail trips into primitive area comprising million acres of forest, lakes, streams, where fishing is excellent. Conducts hunting parties in season. Game: deer, bear, pheasants, ducks, etc. Rates: \$40.00 to \$50.00 per week per person. Reduction for families of more than four. Charge for transportation Wenatchee to ranch, \$10.00. Extra charge for pack trips. Operator-owner: Paul E. Spaeth, Winthrop, Washington.

### **Moose City Cabin Camp and Guest Ranch Trail Creek, Montana**

Located on the Canadian International Boundary line in big game country; joins the Northwest corner of Glacier National Park. Large log cabins, well furnished, located on the west bank of the North Fork of the Flathead River, overlooking the main range of the Rockies located within Glacier National Park. Many streams and lakes afford ample fishing grounds. Good meals served in ranch kitchen for those not wishing to cook for themselves. Saddle horses, fresh eggs, garden and dairy products. Can accommodate 25 to 30 guests. Prices very reasonable. 57 miles north of Belton, Montana, and 60 miles north of Columbia Falls, Montana. Will meet train at Columbia Falls or Belton on advance notice. Owner-operator: M. H. Cooper, Whitefish, Montana. P. O. Box 63.

### **Mountain View Ranch (M V Circle) Cliff Lake, Montana**

A truly primitive western ranch situated on Sheep Creek, one-half mile below the mouth of Sheep Creek Canyon under the foot-hill and base of Sheep Mountain which rises to over 9,000 feet. Ranch bus will meet guests at Helena, Butte and Boulder, upon advance notice. Round trip bus fare from either point to ranch is \$15.00 for one person, \$17.50 for two persons, \$22.50 for three persons, \$25.00 for four persons. Offers plain, everyday living, home-cooked food, clean, comfortable beds and bedding, and does not cater to guests who cannot enjoy simple living. Hunting parties in season; special pack trips, including guides, saddle horses, equipment, etc., by special arrangement, the cost of such trips depending upon the number in the party and the services desired. Rates, which include meals, lodging and saddle horse, \$45.00 per week, \$165.00 per month, \$400.00 per season. Rates for families and children upon request. Operator-Owner: R. F. Hanks, Cliff Lake, Montana.

### **The Parkhill Ranches**

Operate two large ranches in Montana; one (a horse ranch) at Beehive, Montana; the other a resort ranch where water sports and horseback riding are featured, near Big Fork, Montana. These two places are operated primarily to provide western ranch life for boys, girls and adult guests. The boys and girls are not on either ranch at the same time. While the boys are at Flathead Lake Ranch the girls are at P Lazy B and transfer of the groups from one ranch to the other is made by train. Special programs of ranch activities under qualified leaders at both ranches for boys and girls.

*A pack trip is an open sesame to thrilling experiences on trails and at campfires*



## The Parkhill Flathead Lake Ranch

Big Fork, Montana

Forty miles south of Belton, Montana, western entrance to Glacier National Park; 18 miles from Kalispell and 32 miles from Columbia Falls, Montana. Altitude 2,983 feet. Two large lodges well constructed and nicely furnished. Recreation and dining hall has two floors and a gallery opening above main floor. Main lodge is of like construction except that at each end it is divided into sleeping quarters—fully equipped with modern plumbing, hot and cold water shower baths, large lavatory and numerous toilets. Other buildings are horse stables, saddle barn, dock, float, and six large cabins. Accommodations for 90 persons in single beds. Saddle horses and guides always available. Fine trail riding in Flathead Forest. Good fishing in nearby streams and Flathead Lake. All kinds of outdoor games and amusements. Excellent swimming, canoeing, boating, sailing, aquaplaning, pack trips by canoe.

The Ranch is managed by Mr. and Mrs. E. R. Parkhill. "Earl" is in charge of the girls' and boys' activities and the entertaining of parent and dude guests during the season. Mr. Parkhill is a graduate of the University of Illinois and with his brothers formerly operated Parkhill Tours throughout the United States, having had 18 years' experience entertaining tourists; visited many other dude ranches before acquiring the two ranches in 1936.

The Parkhills have a special program of activities for boys and girls, ages 9-19 separate from the adult ranch activities, from June 27 to August 21. Girls are accommodated at Flathead Lake Ranch from June 27th to July 24th. Boys from July 25th to August 21st.

On July 25th girls may continue another 4 weeks of ranch life at P Lazy B Ranch. Boys are at P Lazy B Ranch from June 27th to July 24th before spending four weeks at Flathead Lake Ranch.

Adult dude guest rates at Flathead Lake Ranch: \$45.00 to \$65.00 per week, according to number of persons in cabin or lodge. It is not necessary that anyone accompany you to the ranches for you to take advantage of the two or more persons to room rates. It is customary on dude ranches to bunk congenial folks together in the same room, with each guest having an individual bed. Unless you particularly desire individ-

ual privacy, it is recommended that you reserve accommodations at the two or more persons rate. Children under eight years of age accompanied by parents, one-half of adult ranch rates.

The rate includes lodging, meals, use of horses, boats and participation in all entertainment planned at the ranches. Guests staying two weeks or longer, or paying a minimum two week rate of \$90.00, have the privilege of taking a 4-day canoe pack trip.

Guests will be met at Kalispell, Columbia Falls or Belton and transported to the ranch at the rate of \$3.00 (\$3.50 from Belton) per person for the round trip.

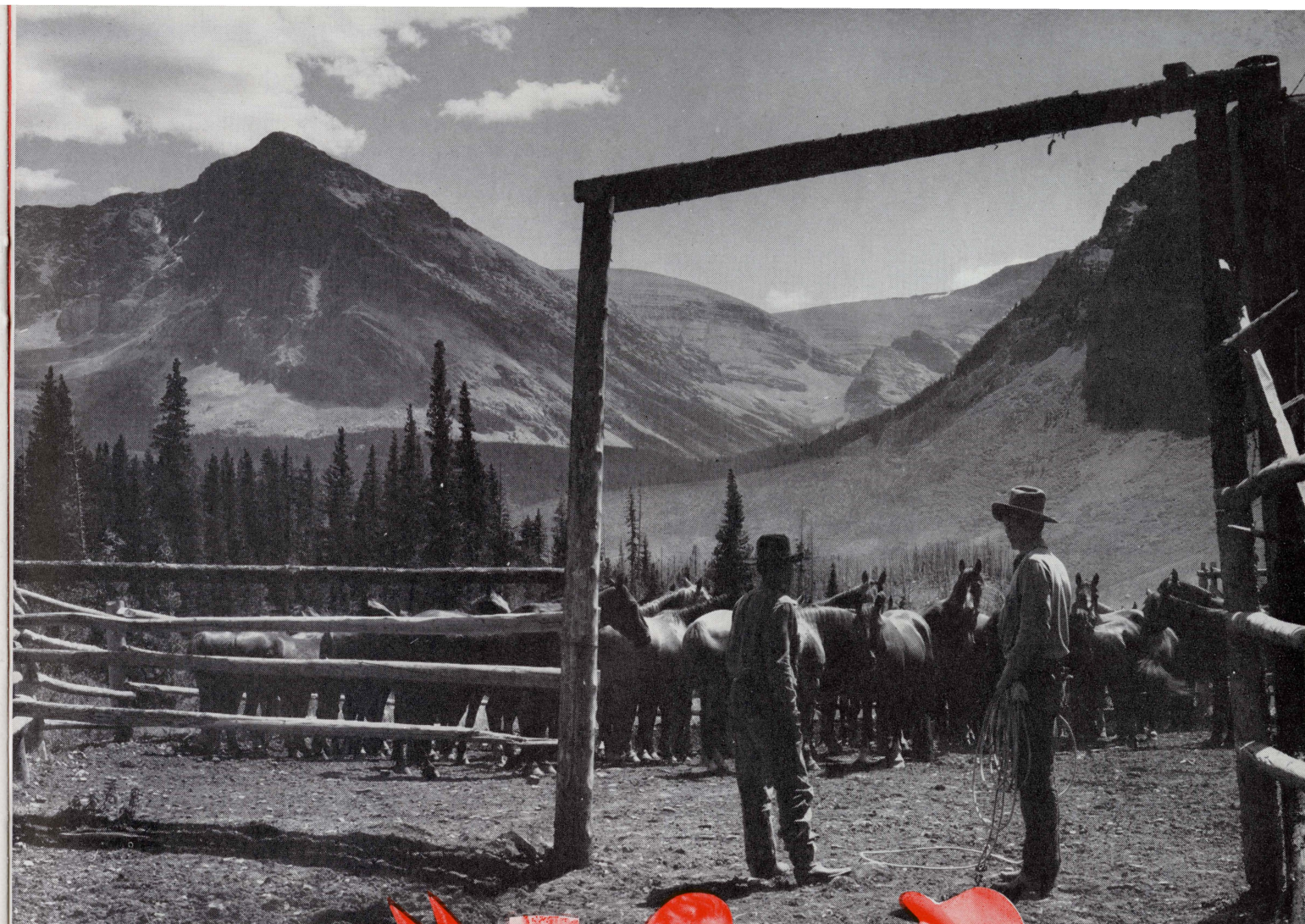
Flathead Lake Ranch is open from May 15 to November 15. However, Flathead Lake Ranch is reserved for boys and girls, ages 9-19, for the eight-week period from June 27 to August 21, inclusive. Accommodations are available for parents and relatives during this period. The ranch is open prior to June 27 and after August 21 for adult guests, family groups and parents who would like to stay over after the close of the boys and girls period. Boys and girls may stay post season as regular dude guests.

In making further inquiry or reservations prior to June 21, correspond direct with Eastern Office, 702 S. Neil St., Champaign, Illinois. After June 21, make reservations direct with Flathead Lake Ranch, Big Fork, Montana.

## Rising Wolf Ranch (Bar Lazy D N)

Glacier Park, Montana

Eight miles south of Glacier Park Station on South Fork of Two Medicine River in the Lewis and Clark National Forest. Guests are met at Glacier Park Station and transported to ranch without charge. Facilities: Ranch house, containing kitchen, dining room, living room, five double bedrooms and two baths; two cabins, each with two bedrooms, private baths, living room with fireplace; five tent houses. Accommodations for 25 guests. Recreation: fishing, swimming, riding, camping trips, target range, mountain climbing. Rates: \$50.00 per week per person in cabins; \$45.00 per week per person in ranch house; \$40.00 per week per person in tent houses. Reduced rates for families or groups of 4 or more staying 2 weeks or longer or for one person staying 4 weeks or longer. Comfortable beds and good meals served ranch style. Rates include saddlehorse and guide and car trips to scenic points. Albert (Dutch) Trenkle, Glacier Park, Montana.



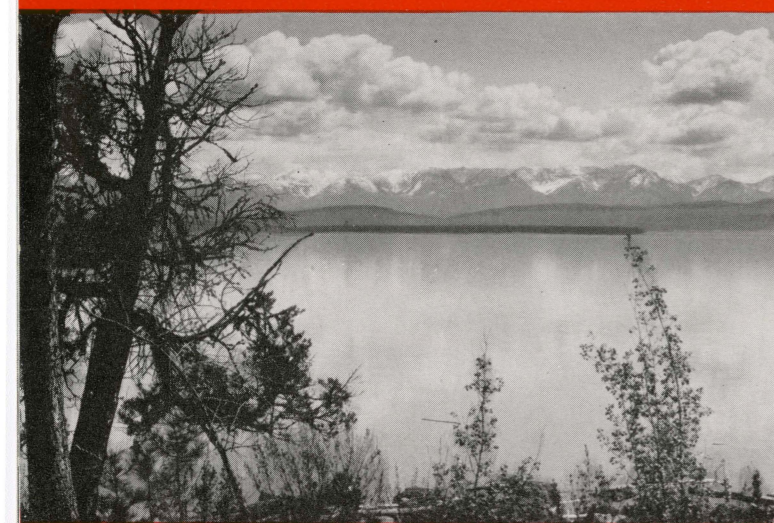
*Horseback riding, of course, will be your principal diversion while you enjoy Dude Ranch life. If you are an experienced horseman you'll find just the sort of spirited mount you like best, but if saddle-travel is new to you, don't worry about getting a horse that is gentle and trail-wise enough for a beginner. The "Wrangler" will pick the horse that best fits your requirements.*



Your horse will bring you back safely at day's end...



*Dude ranch party ready to hit the trail from Glacier Park Hotel.*



*Above—Many resorts and ranches are located on beautiful Flathead Lake. Below—A comfortable saddle for every rider.*



### **Stampede Ranch** High River, Alberta, Canada

One hundred twenty-five miles from Prince of Wales Hotel, Waterton Lakes Park; 180 miles from Sweet Grass, Montana; 35 miles west of Aldersyde or High River, Alta., Canada. Highwood River flows through ranch. Excellent trout fishing. Altitude 4,600 feet. Guests coming on Great Northern Ry. can detrain at Glacier Park, take bus to Prince of Wales Hotel and bus from there to High River, Alta. Ranch cars meet guests by appointment at High River and make no charge for transportation to ranch. Real cattle outfit, equipped to accommodate 35 guests in main ranch house, log cabins and genuine Indian tepees. Rates from \$35.00 per week per person. Special monthly rates and to parties. Main ranch house of logs with guest lounge and reading room, recreation and dancing. Spacious kitchen and dining room in separate building. Fine scenic riding country on real cattle range, foothills and mountains. Gentle saddle horses for persons of all ages. Experienced cowboy guides. Trips with the chuck wagon. Big game hunting in season. Season May 15 to Oct. 1. Owner: The Stampede Ranch, Ltd., Guy Weadick, Manager. P. O. Box 33, Longview P. O., Alberta, Canada. Long distance telephone: High River R. 2303. Telegraph address: The Stampede Ranch, High River, Alberta, Canada.

### **The Tamaracks (Lazy HT)** Seeley Lake, Montana

Ninety miles from Columbia Falls, Montana, on Great Northern Railway. On shores of Seeley Lake in Lolo National Forest. Altitude, 4,010 feet. Will meet and transport guests arriving Great Northern Ry. at Columbia Falls or Glacier Park. Charge for transportation to ranch \$10.00. Buildings: rustic log construction—dining room, lodge and clubhouse in separate buildings; 14 guest cabins, each accommodating from 3 to 7 persons. All strictly modern—hot and cold running water with shower or tub baths. All buildings within 50 yards of lake. Accommodations for 30 guests. Good beds, good food, good swimming. Horses and riding equipment furnished and included in rate. Guides furnished when necessary. Trout fishing in streams; bass in lake. Rates: \$55.00 to \$70.00 per week per person. Special rates for groups of college girls. Owner and operator: Mrs. Henry Turner. Postoffice address: Seeley Lake, Montana. Telegraph address: Missoula, Montana.

### **U. S. Bar Ranch** Ukiah, Oregon

Fifty miles from Pendleton, Oregon, in the heart of Oregon's famous Blue Mountain country, bordering Umatilla National Forest and 12 miles from Whitman National Forest. Altitude 3,400 feet. Will meet guests at Pendleton, Oregon, and transport them to ranch. Buildings—rustic lodge with all modern comforts; hot and cold running water, tub and shower baths, electric lights, spacious living room with large fireplace, all outside rooms with best of beds; large dining room and kitchen. Fresh ranch products and wild game in season provide a variety of excellent food served ranch style. No cabins. This is an operating stock ranch with a large string of good gentle saddle horses. Excellent deer and elk hunting and fishing in season. Rate \$35.00 per week per person. Special rates for families, groups and extended stays. Rates include room, meals, horse, saddle, riding and trick roping instructions, guide service, moonlight rides, swimming, dancing, hiking, trips to hot mineral springs and gold mining, and all ranch activities. Owners-operators: Mr. and Mrs. Bob Fletcher. Postoffice and telegraph address: Box 106, Ukiah, Oregon.

### **Wild Horse Island Ranch** Dayton, Montana

Thirty miles from Kalispell, Montana, and 45 miles from Columbia Falls, Montana. On Wildhorse Island in Flathead Lake; also in the northern section of the Flathead Indian Reservation. Altitude 2,900 feet. Will meet guests coming on Great Northern Ry. at Kalispell and make no charge for transportation to ranch and return to Kalispell. Lodge is log structure with large porches overlooking lake. Containing lounge, dining room, kitchen, 6 double bedrooms and 2 baths. Another lodge contains 5 bedrooms, lounge and bathroom. A clubhouse contains 10 beds. In addition there are several cabins and other ranch buildings. Accommodations for 30 guests. Good beds, good food, trail riding, swimming, water skiing, surf-board riding, boating, fishing and many other activities. The Montana State Game Commission has made Wild Horse Island a state game preserve and guests will find countless birds and wild animals living on the island,

which is four square miles in area. Rates: \$35.00 to \$50.00 per week per person. Rates include daily use of saddle horse. Owners and operators: Wild Horse Island Lodge, Dayton, Montana.

### **Fish Lake Hatcheries** Stryker, Montana

Not a dude ranch but an exceptional fishing camp located in the Whitefish Range of the Rockies on Fish Lake—also near Bull Lake and Stillwater River—two miles from the Kootenai National Forest and four miles from Great Northern Ry. station at Stryker. Altitude 3,800 feet. Camp consists of 5 log cabins, 3 on Fish Lake and 2 about 300 feet from the lake shore—all electric lighted and comfortably furnished. No meals served. Sleeping accommodations for 20 guests. Excellent lake and stream fishing nearby. Rates per day per person from \$1.75 to \$6.00; per week per person, from \$12.00 to \$35.00. Reductions for stay of longer than one week. Operator-owner: J. L. Edmonds, Stryker, Montana.

### **Lewis and Clark Guides' & Packers' Association** Choteau, Montana

An association of leading Dude Ranchers, Guides and Packers formed for the purpose of conservating wild life and scenic beauty and promoting Dude Ranch vacations, hunting, fishing and pack trips into the Great Sun River, Flathead and Pentagon Primitive Areas and adjacent territory lying along the Continental Divide south of Glacier National Park. Officers: President, Mrs. Ralph Allan, K Bar L Ranch, Augusta, Mont.; Vice-president, W. V. Hughes, Glacier Park, Mont.; Secretary-Treasurer, Jack Baker, 7 Lazy P, Choteau, Mont. Advisory Board: Joe White, Choteau, Mont.; W. V. Hughes, Glacier Park, Mont.; H. C. Arbuckle, Dupuyer, Mont., and Emil Klick, Augusta, Mont. All inquiries promptly answered when addressed to Jack Baker, 7 Lazy P, Choteau, Mont.

The information contained herein is compiled from data furnished to the Great Northern Railway by the owners and operators of the ranches listed and described. The Great Northern Railway assumes no responsibility for rates and other information given.



**Consult Great Northern Railway about a Dude Ranch Vacation**

# Glorious Glacier Park

Heart of the finest dude ranch country

Many of the desirable ranches are so situated that you can include a visit to Glorious Glacier Park without additional train fare and the Park is the rendezvous every summer of people who are en route to or from nearby ranches, or who come to spend a few days at the park hotels and chalets and tour the park as a variation to dude ranch routine. All-expense tours make it easy for Dude Ranch vacationists to see Glacier National Park.

The Park can be seen in many ways. One can "peek" into it from Great Northern's famous trans-continental train the Empire Builder. The railway runs along the southern border of the park for sixty miles, and its trains stop at both entrances, Glacier Park and Belton stations.

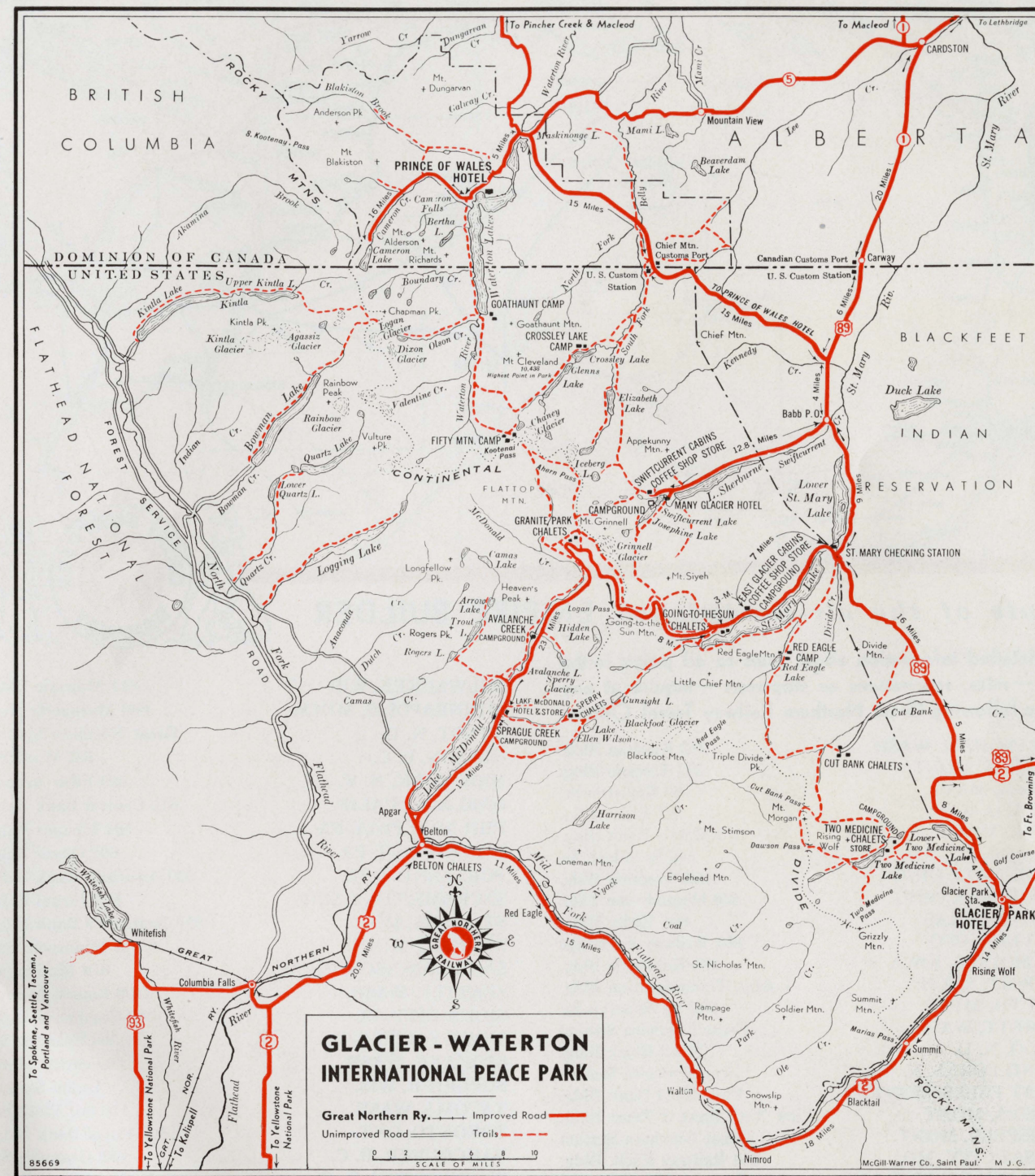
Leaving the Empire Builder, one can tour through the Park over the Going-to-the-Sun Highway, across the Continental Divide, in comfortable motor coaches that connect with all trains. Inter-park motor coach tours of from one to five days reveal an amazing display of nature's most colorful mountain scenery, all the way from the railway north across the Canadian boundary into Waterton Lakes Park. These tours include accommodations at picturesque hotels and chalets, and launch trips on the larger lakes.

Then there are saddle-horse trails for short rides near the hotels and chalets, or you can take a guide and go for a real adventure away from "civilization." An itinerary can be mapped out which takes one from point to point so that every night can be spent at one of the hotels, chalets or trail camps.

There are more than 1,000 miles of trails in Glacier and Waterton Lakes Parks, penetrating into every section. Trail trips can be arranged from one day to a week or more, with different country every day—and good trout fishing almost anywhere.

The country is a paradise for hikers and mountain climbers. There are short walks near all hotels and chalets or "hikes" from one to several days over well branched trails.

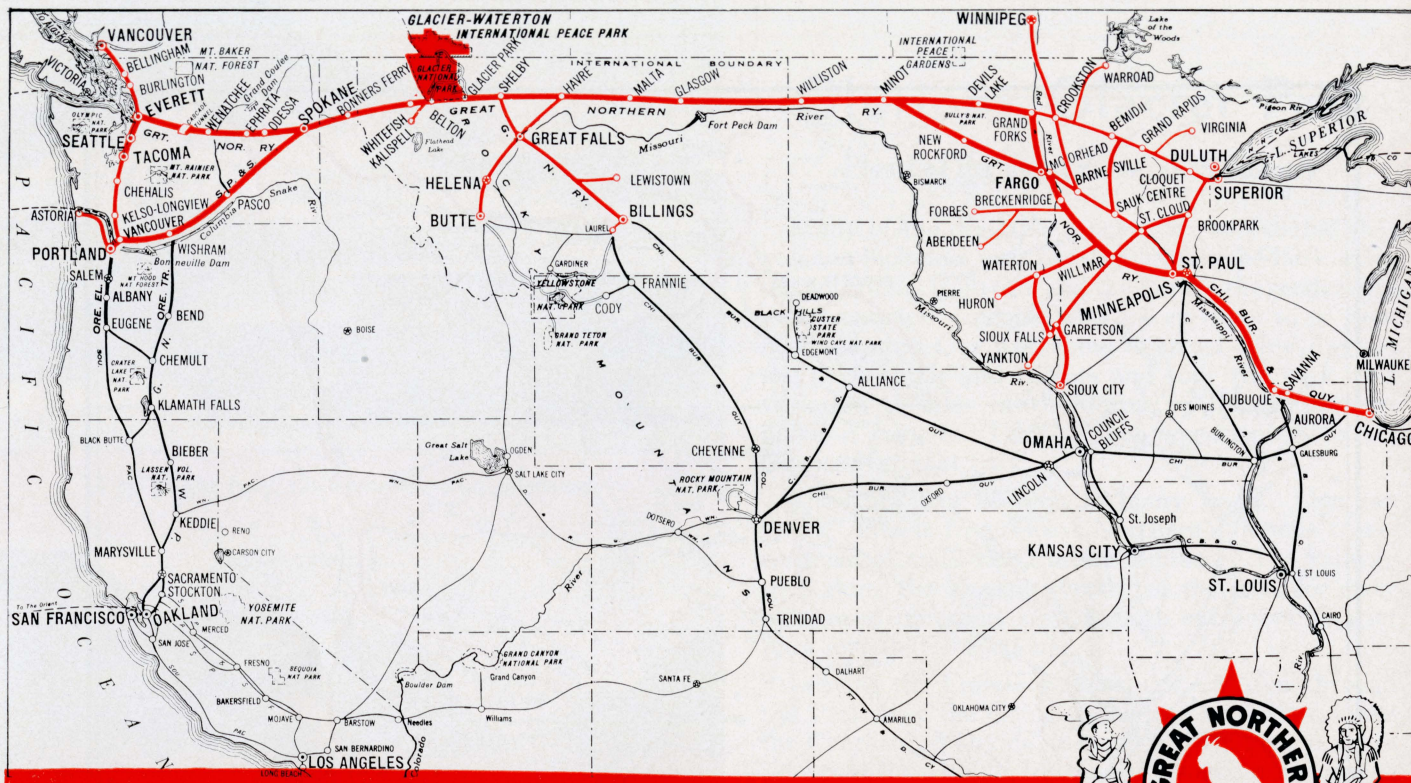
Persons afflicted with hay fever find welcome relief in the pure, pollen-free air of Glacier National Park, as well as at the dude ranches.



Atop Logan Pass, Going-to-the-Sun Highway.

Above—St. Mary Lake, Little Chief Mountain.  
Below—Motor Coaches at Going-to-the-Sun Chalets.

Glacier National Park is America's foremost trail park



## Route of the air-conditioned **EMPIRE BUILDER**

For detailed information about tours to all points in the west—rates, reservations or stopovers—inquire at any of the following Great Northern Railway Travel Offices:

BELLINGHAM, WASH.	212 Kulshan Bldg.
BILLINGS, MONT.	311 Electric Bldg.
BOSTON, MASS.	80 Boylston St.
BUFFALO, N. Y.	797 Ellicott Sq.
BUTTE, MONT.	513 Metals Bank Bldg
CHICAGO, ILL.	142 So. Clark St.
CINCINNATI, OHIO	1008 Traction Bldg.
CLEVELAND, OHIO	508 Hippodrome Bldg.
DALLAS, TEXAS	805 Kirby Bldg.
DENVER, COLO.	601 Railway Exchange
DES MOINES, IOWA	305 Equitable Bldg.
DETROIT, MICH.	Lobby, Transportation Bldg.
DULUTH, MINN.	302 W. Superior St.
EVERETT, WASH.	Great Northern Station
FARGO, N. D.	701-2 Black Bldg.
GRAND FORKS, N. D.	Great Northern Station
GREAT FALLS, MONT.	First Nat'l Bank Bldg.
HELENA, MONT.	First Nat'l Bank & Trust Bldg.
KALISPELL, MONT.	Great Northern Station
KANSAS CITY, MO.	544 Railway Exch. Bldg.
KLAMATH FALLS, ORE.	Great Northern Station
LEWISTOWN, MONT.	Great Northern Station
LOS ANGELES, CALIF.	918-19 Associated Realty Building

MILWAUKEE, WIS.	814 Majestic Bldg.
MINNEAPOLIS, MINN.	640 Marquette Ave.
MINOT, N. D.	Great Northern Station
NELSON, B. C.	557 Ward St.
NEW YORK, N. Y.	595 Fifth Avenue
OAKLAND, CALIF.	611 Central Bank Bldg.
PHILADELPHIA, PA.	504 Finance Bldg.
PITTSBURGH, PA.	602 Oliver Bldg.
PORTLAND, ORE.	530 American Bank Bldg.
SACRAMENTO, CALIF.	223 Forum Bldg.
ST. LOUIS, MO.	819 Boatmen's Bank Bldg.
ST. PAUL, MINN.	4th & Minnesota Sts.
SAN FRANCISCO, CALIF.	679 Market St.
SEATTLE, WASH.	1400 Fourth Avenue
SIoux CITY, IA.	400 Commerce Bldg.
SIoux FALLS, S. D.	503 East 8th St.
SPOKANE, WASH.	Davenport Hotel
SUPERIOR, WIS.	Union Station
TACOMA, WASH.	116 So. Ninth St.
TORONTO, ONT.	507 Royal Bank Bldg.
VANCOUVER, B. C.	683 Granville St.
WASHINGTON, D. C.	303 National Press Bldg.
WENATCHEE, WASH.	Great Northern Station
WINNIPEG, MAN.	414 Main Street

