

## RATES ON ALL-EXPENSE TRIPS

Special rate per week at Ranch, Board and Cabin, Single .....	\$27.50
Special rate per week at Ranch, Board and Cabin, For two .....	\$50.00
Per week at Ranch, board and cabin, and one-day auto trip through Yellowstone Park, per single person .....	\$32.50
Per week at Ranch, board and cabin, and one-day auto trip through Yellowstone Park, for two .....	\$60.00
Ten days at Ranch, board and cabin, and two sep- arate auto trips through Yellowstone Park, single .....	\$50.00
Ten days at Ranch, board and cabin, and two-day auto trip into Yellowstone Park, to Jackson Hole and Tetons, single .....	\$55.00
(Special arrangements can be made for trips into Yellowstone Park, rates depending on length of stay in Park.)	

Children under twelve, half rate.

Children under five, one-fourth rate.

Special rates for family groups.

(These per week rates include all transportation to and from railroad and bus terminals at Gallatin Gateway, Bozeman and West Yellowstone to Ranch.)

## Rates Per Day (American Plan)

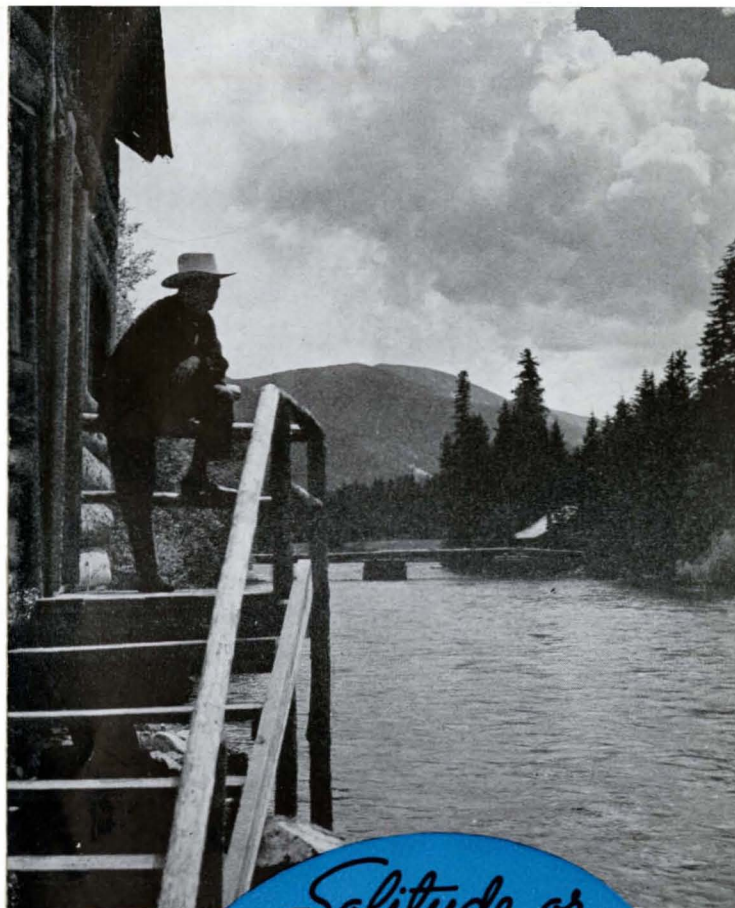
Lodging, single without bath .....	\$ 1.25
Lodging, single modern cabin with bath .....	\$ 1.50
Lodging, for two, without bath .....	\$ 2.00
Lodging, for two, modern cabin with bath .....	\$ 3.00
Breakfast .. 65¢   Luncheon .. \$1.00   Dinner .. \$1.00	
Lodging and meals, per day .....	\$ 4.00
Lodging and meals, modern cabin with bath .....	\$ 4.25

## Rates For Saddle Horses

Short trips, with guide .....	\$ 1.00
One-half day trips, with guide .....	\$ 2.00
Full day trips, with guide .....	\$ 3.50
Arrangements made for pack trips.	

For Further Information Write or Wire  
P. F. Karst, Bozeman, Montana, Route 191

WORLD'S PREMIER  
MOUNTAIN FISHING  
AT KARST'S



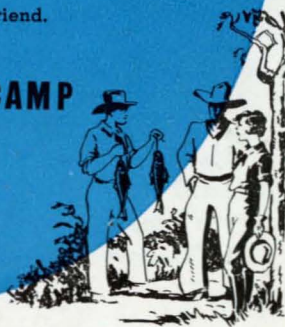
*Solitude or  
Fellowship when  
you wish it..at KARST'S*

In the ranch house at meals, at play or in conversation, you'll find the sociability which results from people living under healthful conditions. On trips afoot, in the saddle or by motor, you may have congenial companions.

Yet, when you wish, you have the privacy of your cabin. You can browse mountain paths alone. In the way of the West, people are valued for what they really are and are permitted to live as they please from hour to hour.

We'll welcome you as a friend.

KARST'S RUSTIC CAMP  
Gallatin Gateway  
Montana . . .



# KARST'S RUSTIC CAMP

GALLATIN GATEWAY · MONTANA

RIDING  
FISHING  
HUNTING  
TASTY MEALS



## The freedom and thrill of the WEST....in COMFORT at KARST'S

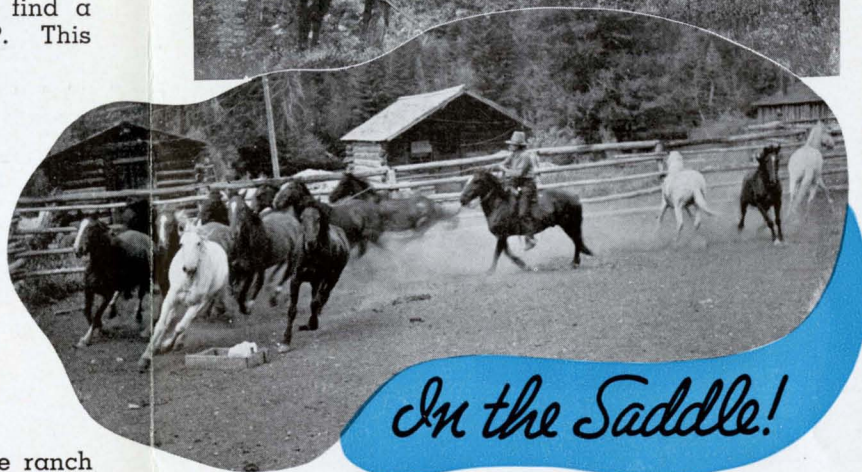
On the beautiful Gallatin River in the heart of the Montana Rockies, you'll find a welcome at KARST'S RUSTIC CAMP. This picturesque ranch is 35 miles from Bozeman, Gallatin's county seat and 15 miles from Gallatin Gateway, the entrance to Yellowstone.

Private daily Auto Service is maintained between The Milwaukee Road trains at Gallatin Gateway, Northern Pacific trains and Greyhound Bus at Bozeman, Union Pacific Bus and Railroad Station at West Yellowstone.

### Your Quarters

You'll be put up in one of the ranch bungalows, built of native logs and consisting of a living-room with one or more bedrooms as you may require. These bungalows are clustered around the main ranch house with its kitchen, combination dining room, recreation lounge and dance hall. Here, on cool evenings, a log fire roars in the great stone fireplace.

Life is easy here despite ruggedness. All buildings have electricity and provide simple comfort with sleep-inviting beds and restful furniture. The clothes you wear are your own affair... anything goes in our informal atmosphere.



*In the Saddle!*

Whether you've never straddled a horse or you're a veteran rider and a keen judge of horseflesh, our corral holds a horse for you.

Well trained mountain horses, whose sure feet know the roads and trails, will take you for an hour's ramble or on extended trips. Reliable guides are available... friendly fellows ready to guide you into the fascinating mountains. All equipment, including tepees, bedding, cooking utensils and food are furnished by the ranch.

### By Motor or Afoot

Trails are many and endless in variety. There are short, easy ones for the weary... long mountain pack trips for a day or a week... up to timberline altitudes of 11,000 feet! Mountain scenery of great beauty calls you to Lava Lake, Windy Pass, Jumbo Mountain and the Petrified Forest. One or two day motor trips to Yellowstone Park may be arranged.

## No end of things to see ... and do

Do you enjoy fishing? In nearby waters are trout... Rainbow, Eastern Brook, Loch Leven, Native Cut Throat, Grayling and Golden Trout and Mountain Whitefish.

Golden Trout are found in one lake, one of the two spots in all the world where you may cast for these rare beauties. Fishing equipment may be had at the ranch and so abundant are fish that even the novice may expect a good catch.

## at the portals of Yellowstone

An hour's drive brings you to Yellowstone Park, America's greatest wonder spot of mingled beauty and freaks. One or two-day trips may be planned.

## Everything you need is here

Comfortable quarters  
Wholesome food  
Restful beds  
Long distance phone  
Ranch laundry

Ranch store  
Electricity  
Horses  
Autos

