

SCENES AND ACTIVITIES



Karst's Ranch Store and Lodge
In Scenic Gallatin Canyon



The corral is the starting point of innumerable mountain trail trips
In the Saddle or on Foot

Trails are many and endless in variety. There are short, easy ones for the weary . . . long mountain pack trips for a day or a week . . . up to timberline altitudes of 11,000 feet! Mountain scenery of great beauty calls you to Lava Lake, Windy Pass, Jumbo Mountain and the Petrified Forest.



Interior of
Karst's Cabin



Dining Room

In the spacious
recreation room
guests meet
evenings for
music and
dancing.



From December first through
March thousands of winter
sports enthusiasts revel in
the natural beauties which
abound at Karst's Ranch.



Yellowstone National Park

Traversing a highway winding along the Gallatin River, and with the thrill of ten thousand foot snow capped mountain peaks nearby, guests from the ranch are taken for a complete trip through famous Yellowstone National Park. While the high lights are Old Faithful, the Grand Canyon and Falls, the bears, there are innumerable beautiful hot pools and springs, exquisite lakes, superb waterfalls, an endless array of natural spots of intense beauty and of freaks.

An hour's drive brings you to Yellowstone National Park, America's greatest wonder spot of mingled beauty and freaks. One or two day trips may be planned.



KARST'S RANCH

GLORIOUS
DAYS

In the Land of the
Shining Mountains

EVERYTHING YOU NEED IS HERE
Comfortable Quarters
Wholesome Food
Restful Beds
Long Distance Phone
Ranch Laundry
Ranch Store
Curio Shop
Electricity
Saddle Horses
Automobiles

Guests making reservations are met at
Bozeman, Mont.:
Northern Pacific Railway station
Greyhound Bus Terminal
Gallatin Gateway, Mont.:
C. M. ST. P. & P. RY. Gallatin Inn
West Yellowstone, Mont.:
Union Pacific R. R.
Union Pacific Bus Terminal
Western Airlines
By special arrangement automobile trips
are made from the ranch to the innum-
erable adjacent points of historic interest.

RATES PER DAY
(These rates do not include transportation)
Lodging, single, without bath . . . \$1.25
Lodging, double, without bath . . . \$2.00
Lodging, single, modern with bath . . \$2.00
Lodging, double, modern with bath . . \$4.00
Dining Room and Coffee Shop Service
at reasonable rates.

RATES FOR SADDLE HORSES
Short trips, with guide . . . \$1.00
One-half day trips, with guide . . . \$2.00
Full day trips, with guide . . . \$3.50
Arrangements made for pack trips



Situated in Gallatin Canyon,
Montana
on U. S. Highway 191
entrance to Yellowstone Nat'l. Park
(P. O. Gallatin Gateway, Mont.)
**THE FINEST ALL EXPENSE
RANCH VACATION**

SEVEN FULL DAYS

Includes

Auto transportation to and from
ranch and tour of
Yellowstone National Park

Log cabin (modern) Delicious meals

Mountain trails for hiking and saddle horse trips, and no end of things to see and do. In nearby waters are trout . . . Rainbow, Eastern Brook, Loch Leven, Native Cut Throat, Grayling and Golden Trout and Mountain Whitefish. Golden Trout are found in one lake, one of the two spots in all the world where you may cast for these rare beauties. Fishing equipment may be had at the ranch and so abundant are fish that even the novice may expect a good catch.

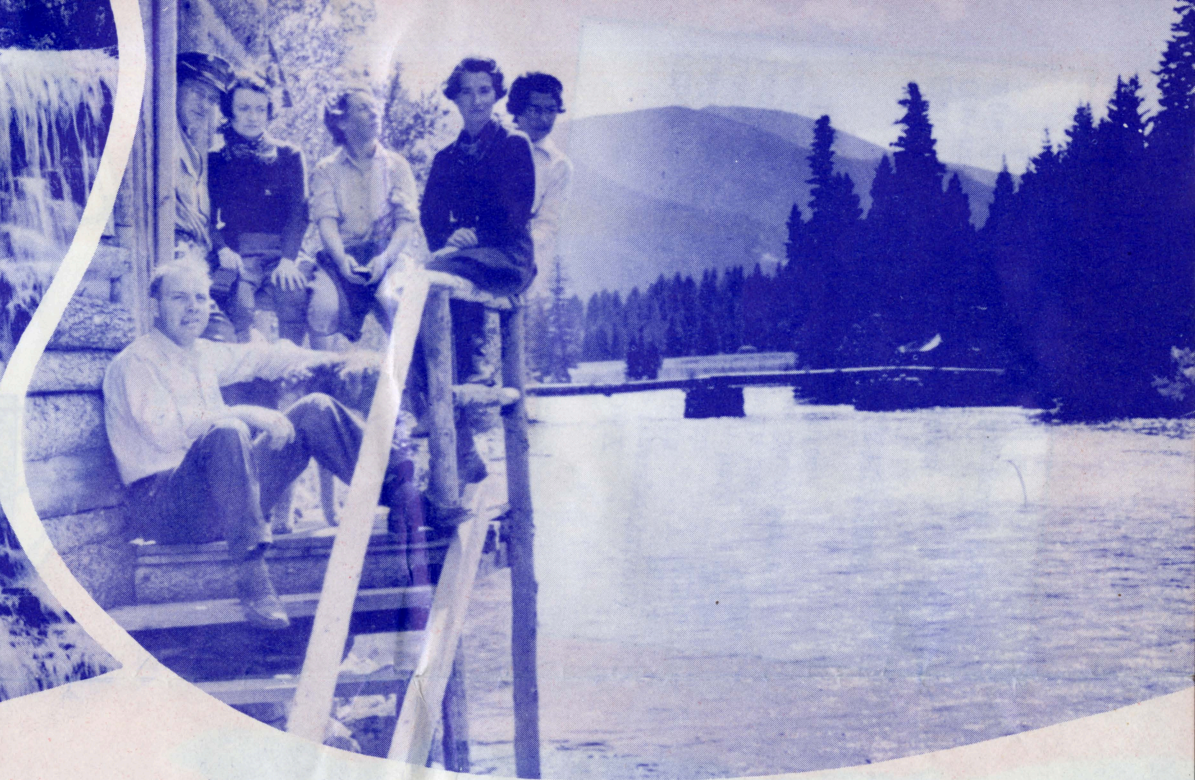
ALL FOR
\$35.00
PER PERSON

MONTANA'S LARGEST ALL YEAR MOUNTAIN RESORT

ALL EXPENSE VACATION--
**WHAT
YOU GET**



Ouzel Falls, a nearby
point of rare beauty.



Ranch cabins are located on the banks
of the Gallatin River



Gallatin Canyon



On the beautiful Gallatin River in the heart of the Montana Rockies, you'll find a welcome at KARST'S RANCH. This picturesque ranch is 35 miles from Bozeman, and 56 miles to the entrance to Yellowstone National Park.

Private daily auto service is maintained between the ranch and the Northern Pacific Railway and Greyhound Bus Stations at Bozeman, the C. M. ST. P. & P. RY. at Gallatin Gateway and Union Pacific Railroad and Bus station at West Yellowstone.

**The freedom and thrill of the WEST
in COMFORT at KARST'S**

You'll be put up in one of the ranch bungalows, built of native logs and consisting of a living-room with one or more bedrooms as you may require. These bungalows are clustered around the main ranch house with its kitchen, combination dining room, recreation lounge and dance hall. Here, on cool evenings, a log fire roars in the great stone fireplace.

Life is easy here despite ruggedness. All buildings have electricity and provide simple comfort with sleep-inviting beds and restful furniture. The clothes you wear are your

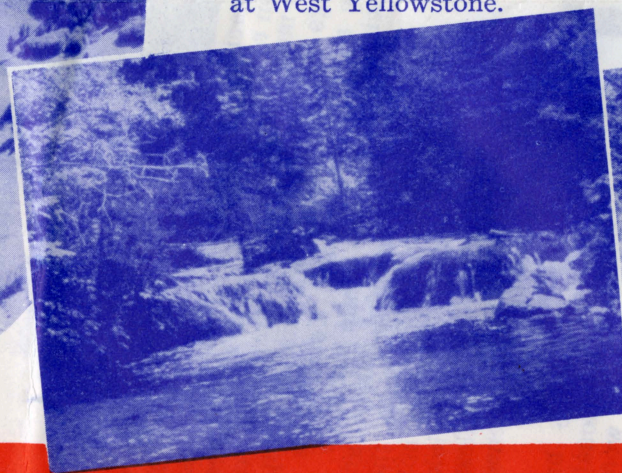
own affair . . . anything goes in our informal atmosphere.

In the ranch house at meals, at play or in conversation, you'll find the sociability which results from people living under healthful conditions. On trips afoot, in the saddle or by motor, you may have congenial companions. Yet, when you wish, you have the privacy of your cabin. You can browse mountain paths alone. In the way of the West, people are valued for what they really are and are permitted to live as they please from hour to hour.

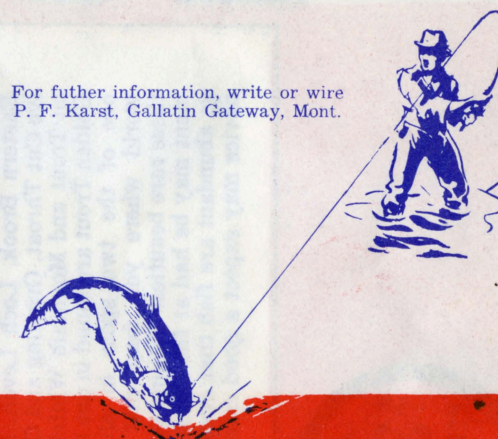
We'll welcome you as a friend.

Whether you've never straddled a horse or you're a veteran rider and a keen judge of horseflesh, our corral holds a horse for you.

Well trained mountain horses, whose sure feet know the roads and trails, will take you for an hour's ramble or on extended trips. Reliable guides are available . . . friendly fellows ready to guide you into the fascinating mountains. All equipment, including tepees, bedding, cooking utensils and food are furnished by the ranch.



For further information, write or wire
P. F. Karst, Gallatin Gateway, Mont.



WORLD'S PREMIER MOUNTAIN FISHING