

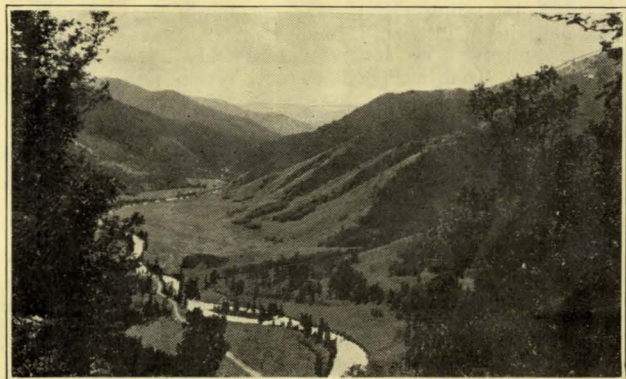
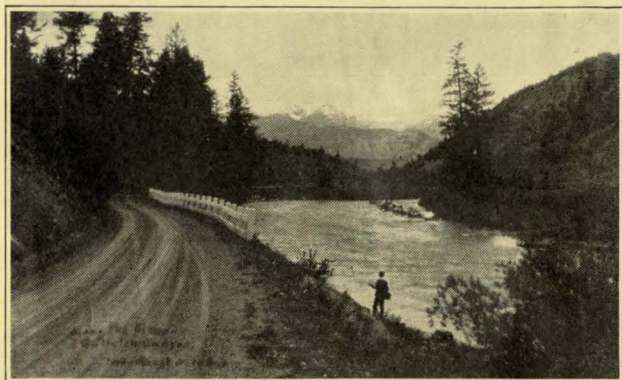
For Further Information and Rates Write

Karst's Rustic Kamp

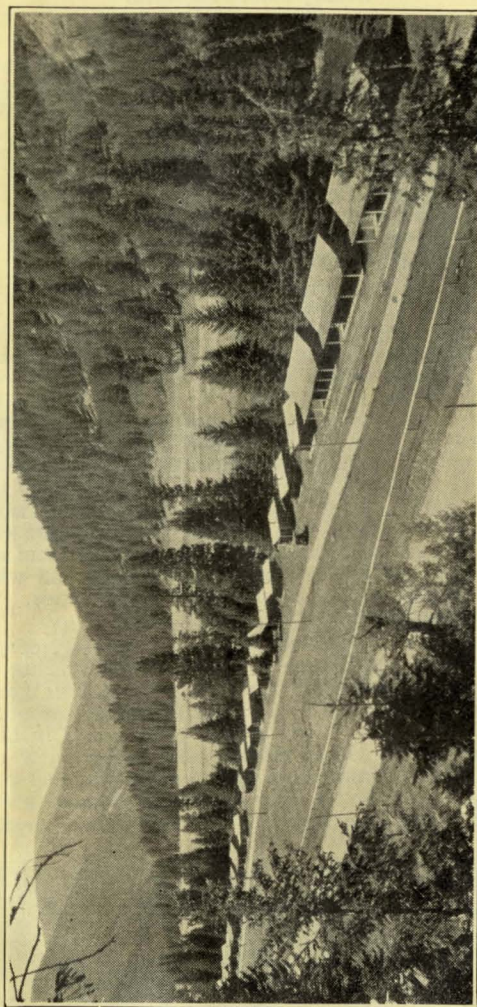
GALLATIN GATEWAY, MONTANA

Phone 10-F-14

Route 191



**Karst's
Rustic
Kamp**



In The Famous Gallatin Canyon

**Karst's
Rustic
Kamp**

SPEND YOUR VACATION

*In The Most Ideal Pleasure Resort
In Montana*

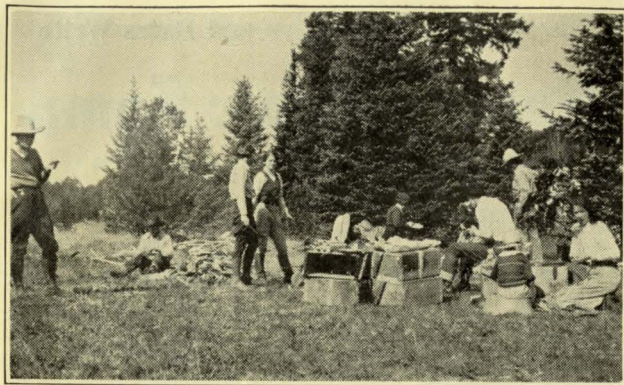
Karst's Rustic Kamp

Modern Cabins, Excellent Meals
Store, Gasoline, Oils

KARST'S RUSTIC KAMP is situated on the beautiful Gallatin river, in the heart of the Montana rugged Rockies, fifty-eight miles from the western entrance to Yellowstone Park. The ranch is thirty-five miles from Bozeman, Gallatin's county seat. A regular daily bus service from Karst's meets the N. P. R. R. and Greyhound bus at Bozeman and the Chicago, Milwaukee and St. Paul R. R. at Gallatin Gateway and provides comfortable passage to the Kamp and West Yellowstone.

The ranch proper comprises a number of log bungalows with living rooms, one, two, three and four room capacity, arranged to accommodate from one person up to the entire family, clustered about a very much larger building, known as the community house, containing kitchen and combination dining room, recreation, lounging room and dance hall, with a large open fireplace. All buildings are one story, of rustic design, electric lighted and plainly, but comfortably furnished. A long distance telephone puts you in touch with the outside world. Laundry is done at the Ranch. The beds are comfortable and the atmosphere informal—an ideal spot for those who prefer the great outdoors and where sport or old clothes can be worn at all times. The comforts of home in the rugged west.

Enjoy the thrill of mountain climbing, of getting to the top of the world, of rediscovering the outdoors; and another thrill in trail riding; gorgeous days of sunlight and grand nights around a campfire. Every hour, except those spent in blissful and sound sleep, rich in new sights, new surroundings, the change needed to make you feel yourself again. Gentle sure-footed mountain trained saddle horses in charge of an experienced horseman,



are to be had, as well as reliable guides, who will take you to all points of interest, and up rugged mountains, which rival the Alps. Our sight-seeing trips, both horseback and by automobile, extend into the famous Yellowstone Park where wonders beyond imagination are to be seen. All equipment, such as teepees, bedding, cooking utensils, food, in fact everything needed on the trail, is furnished at the ranch.

Besides the extended mountain trips, which may be arranged for a period of from over night to a week or more, short, one day trips are planned to take you to the most interesting spots near the Kamp. The trails about the ranch are many and varied, including short trips for beginners. Mountain scenery of great beauty lures guests of the Kamp on trips to Lava Lake, Windy Pass, Jumbo Mountain, the Petrified Forest. Also one or two day trips to Yellowstone Park may be arranged. Along these trails, beautiful scenery may be enjoyed from the saddle and wild game of every description is abundant. For the lover of the line and rod Karst's Rustic Kamp is situated in the very heart of a "Fisherman's Paradise."

Great care has been taken in arranging all rates at a minimum while an equal care has been taken in providing every comfort and entertainment for our guests. Pack trips, with competent guides, are reasonable for either extended trips or short rides around the Kamp. Living quarters at the Kamp are snug and comfortable with every modern convenience and priced within the reach of everyone.

