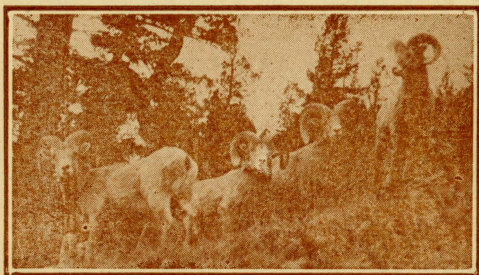


ALLAN RANCH

in the
Sun River Canyon
of the
Rocky Mountains

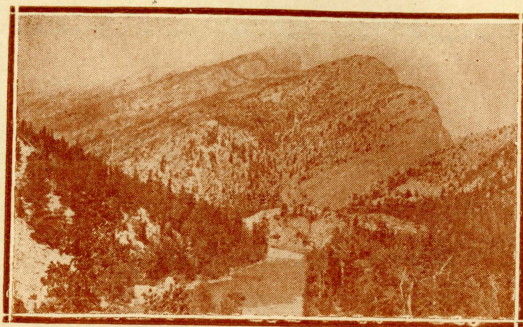


ROCKY MOUNTAIN BIG HORNS



RALPH ALLAN
LICENSED GUIDE AND OUTFITTER

Augusta, Montana



CASTLE ROCK

BEYOND THE BEATEN PATHS

About seventy-five miles South of Glacier Park by mountain trail and a part of the same great rugged Rocky Mountains is a big beautiful Canyon drained by a shining emerald river which with its tributaries drains every crevice and cranny, gulch and gully of the surrounding pine covered, rock cliffed, snow crowned mountains. It is well named Sun River Canyon. After a few days or weeks spent in its alluring wilds, it surely does leave a sunny spot in your memory.

At the end of the auto road which follows this winding river up the Canyon, across little hurrying streams and around narrow rocky places in one of the many little grassy parks bordering the river is the Allan Ranch.

From the entrance to the Canyon where Sawtooth, a massive, jagged-edged mountain over 8200 feet high rises abruptly from the plains and where across the river Castle Rock, a real medieval turreted castle-like peak rears itself likewise, the two forming a gateway to the Lewis & Clark National Forest, mountain after mountain reaches to the sky. Whichever way one looks always there is a glimpse of one a little further beyond beckoning you on.

At the Ranch six miles above the mouth of the canyon, you are in the big mountains where trails lead fan wise into a land where "crowds don't go, nor whistles blow,"—where autos can't go. Some are well kept Forest Service trails that take you into a big game, big fish, big tree country to the Continental Divide and "over the top." Many are will o' the wisp game trails, where perhaps no other person has ventured before you. Trails that are 'kinder windin' and go where no one know; that lead over carpets of flowers, ferns and mosses, through shadows of trees and rocks to open sunlit places where wondrous mountains stretch in seemingly endless panorama before you; where the laughter of tumbling mountain streams, the voices of the winds through the tree tops and over the crests

the songs of birds and the sounds of scurrying wild things are all the 'noises' you hear. Where the quietness, the beauty, grips you and rests you. You just feel the greatness of it all and are content as Mary Roberts Rinehart says, "it gets you."

This virgin country is a continuation of Glacier Park, away from the crowds where nature reigns supreme, each season, in befitting colors, scenes and game.

In this country there are elk, the second biggest herd in the U. S., black and white tail deer, black, brown and grizzly bear and mountain lion for the big game hunter. Ruffed and blue grouse and ducks for feathered game shooting. Moose, Rocky Mountain Goat and Big Horn Sheep for the camera hunter. There are also mink, lynx, marten, bob cats, coyotes, beaver, porcupine, whistling marmots,



A FISHING PARTY AT SALMON LAKE

flying and pine squirrels, badgers and an occasional otter and wolverine,—more different kinds of animal life than in any other one place in the country in the same radius of miles. A pack of lion and cat dogs, Judy a black bear and Patsy a tame coyote, live at the Ranch.

There are all kinds of flowers from when the first dog tooth violet blooms at the edge of a snow bank in the Spring to the last bit of Indian Paintbrush that fades in a snowstorm in the Fall; a great variety of mushroom growths; plants; trees, ranging from the creeping cedar and fantastic jack pine to the giant tamaracks and yellow pines; and foundation for it all, cropping out everywhere, the vast array of rocks that have given the Rockies their name.

And, O Man! the trout fishing! It begins in Sun River, 50 feet from the house and lures you on to more distant places—the beautiful Eastern Brook, the black spotted Native or cut throat, the fighting Rainbow and the great Dolly Varden or



LANG FALLS

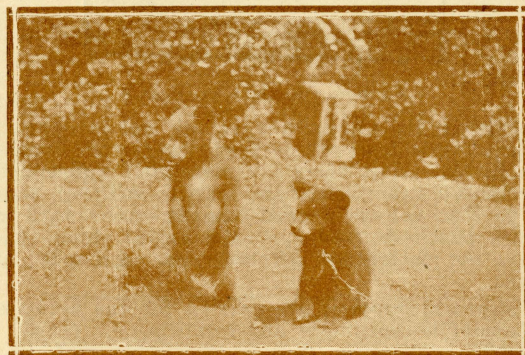
bull trout. The true fisherman knows the thrill that comes with the strike of any one of these wary beauties. Fishing licenses can be procured at the ranch.

The Ranch house is a rough timbered, roomy mountain lodge. There is a long wide porch commanding a wonderful mountain view; a big living room with game trophies and fire-places; a good-sized dining room; comfortable sleeping rooms, or tent houses, if you prefer, or cabins for family parties. Everything is comfortable and clean. The meals are well served and carefully prepared with fresh milk, cream, butter, eggs, vegetables and ice from the ranch. Pure cold drinking water. There is a delightful natural Warm Springs Plunge, 3 miles up the river,—river bathing 50 feet from the house. Elevation at Ranch 4720 feet. Cool nights. No mosquitoes.

Horseback riding, fishing, hunting, hiking, swimming, camera hunting, mountain climbing and nature study are the outdoor amusements. A piano, phonograph, radio and good library together with dancing, games and gatherings around the fire-place make the evenings and rainy days pass swiftly.

Winter brings skating, skiing and snow-shoeing. Then the game moves down towards the Ranch scarcely a day passes that one cannot see elk, deer or sheep, maybe all three, in the course of a short walk or from the porch.

It is just one more of those delightful Western mountain homes with its air of genial hospitality on the verge of modernity where one can rough it comfortably. No formalities. Sports togs are all that are needed.



PUNCH AND JUDY AT RANCH

There are many interesting one and two day trips afoot or ahorseback for one staying at the Ranch:— The Sun River Diversion Dam, where the waters of the river drop 125 feet, foaming and spraying into a narrow rocky gorge; the Medicinal Mine, a many-hued rocky structure which has been worked since Indian days for a substance containing valuable medicinal properties; Rock Sheep Sheds hewed by nature in a rock cliff, high on a mountain, where the Rocky Mt. Big Horns may be seen; Elk Licks, where elk and deer go for salt and game pictures may be secured; Lang Falls in a wild picturesque setting where a mountain stream plunges to a deep pool beneath and hurries madly to the river; Warm Springs, where a refreshing plunge may be taken in warm water which bubbles from a nearby spring; Bear Lake, where there is snow the year around; Beaver Dams and workings; many other waterfalls, caves, mountains and streams to explore. Every day a new trail to follow. Lunches are provided for those taking day trips from the Ranch.

The season is from June 1st to November 15th, though the house is open all year. The rates at Ranch for board and room are: \$4.00 a day, \$25 a week, \$100 a month. Saddle horses are \$1.25 a day. Riding instructions if requested.

The nearest railroad station is Gilman or Augusta Montana, 25 miles from the Ranch, where the Ranch car meets the train Mondays and Saturdays,

during July and August,—once a week in June and September. Charge is \$3.00 a passenger or \$5.00 a round trip on regular trips. Special trips on notice at usual rate of \$12.00 a trip. Ranch is on the Forest Service Telephone Line.



FORDING SUN RIVER AT ALLAN'S

Great Falls, Montana is the nearest city, 80 miles distant from where a good auto road leads to the Ranch. Here there are pleasant camping spots for those autoing with camp outfit. All that is asked is that you be a good camper,—your yard left clean, papers burned, tin cans buried and green trees not destroyed. Protect your grounds and game.

General supplies are carried for the accommodation of house guests and campers.

WITH SADDLE AND PACK

Do the uncrowded trails call to you? Let's go!

The hunting, fishing, camping and sight seeing trips with saddle and pack horses take you into an almost unexplored country where there are no crowds, no rules, except the courtesy of the trail; no restrictions except for fire prevention and game protection; no set camp places, your own site to choose of all the appealing shady nooks at every turn.

From the ranch trails lead to Swan River, Big River, White River, Flathead River, Dearborn River, Teton River and Spotted Bear River; to Scapegoat Mountain, Pentagon Mountain, Evans Peak, Holland Peak, Cardinal Mountain, Gordon Mountain and others; to Big Salmon Lake, Holland Lake, Surprise Lake, Lena Lake and more.

There are many different passes over the Continental Divide, namely —Big River, Rock Creek, Moose Creek, under the Chinese Wall, Indian Creek, Ahorn, Scapegoat, Gordon Pass into Swan River, and Devil's Washbound into Teton River. The Chinese Wall is a massive rock wall, four miles long and from 1500 to 2500 feet high, the home of Rocky Mountain goats. On a clear day twenty-three lakes can be seen from the Gordon Pass and there are snowbanks and glaciers on some of the mountains. The serrated pinnacles of the Mission Range can also be seen in the distance.

All these places are yet in the wild, unchanged by man and can be reached only with pack outfit.

Trips can be arranged from the Ranch to Glacier Park; down Big River to the railroad at Java; down the South Fork of the Flathead to Kalispell via Coram; out Swan River to Missoula via Holland Lake; down the Blackfoot to Missoula via Ovanda. You can go out to the railroad these five different ways over one pass and return to the ranch by another. In fact there are trips from one to ninety days not over the same trail twice with new trails left over for next time.

If you want the best of trout fishing, black, brown or grizzly bear hunting, mountain lion hunting, kodaking big game, grouse and duck shooting, wonderful scenery, mountain climbing and camping, come to our Sun River country. If the far trails call to you, you can not fail to be satisfied and you will want to come back.

Tell us the kind of a trip you are planning. If hunting, what game? Trout fishing? Sight-seeing? Or hunting, fishing and sight-seeing combined? How many in the party (men or women)? Length of time on trip. When will you arrive? Then we will outline such a trip in detail and give you cost of the trip. And it will be your own individual party.



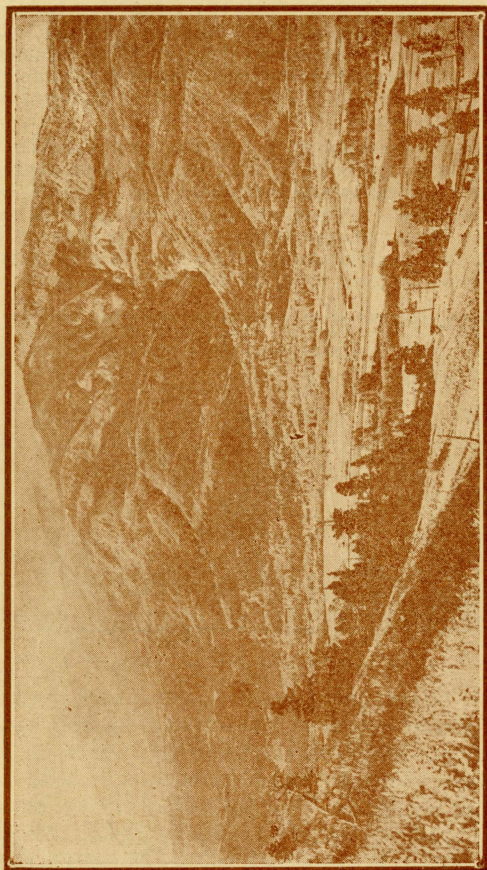
MONTANA'S ELK NEED WINTER RANGE

We furnish horses, guides, camp cook, packers, horse wranglers, tents, provisions, folding chairs and tables, stoves, dishes, cooking utensils, in fact everything needed except your own bedding and personal equipment. We believe in taking enough horses along so that we can carry plenty of equipment to make camping a pleasure. The horses, guides packers and cooks are the best that can be procured—dependable and capable in their lines. No effort is spared to make your trip an enjoyable one.

Arrangements for trips are made in advance and a deposit is required of party to reserve outfit for the date specified.

It is advisable to make reservations early.

Best of references.



ALLAN MOUNTAIN WITH ALLAN RANCH IN BACKGROUND