



• AUG 69

8-14-69

9mm L.
HENRY'S FORK

EPHEMERELLA SPECIES

♀ DUN

paper

Photos

1338
15-90

[349]

• AUG

69



1

8-5-69

11mm 2 TAILS

SPINNER

CALLIBAETIS

COLORADOENSIS

[350]

75%
133 line

Photo 4

Page 31



LEFT — Salmon Fly Nymph (Hellgramite).
RIGHT — Adult Salmon Fly.

Each year from June through early July, fishermen follow the Salmon Fly hatch on many of Montana's streams such as the Madison, Gallatin, Yellowstone, Big Hole, Blackfoot and Rock Creek.

We are offering this post card to Montana fishing dealers. Many dealers are buying the card to correspond with their floaters and fishing customers. Others are offering it for sale in their shops. This card is available only through us. The cost is \$7.00 per hundred plus 75¢ postage.

PHOTOS BY
DAN & JUELIE McLEAN
Box 13 - 682-4940
Ennis, Montana 59729



PHOTOS BY DAN & JUELIE McLEAN



Post Card

Bud Lilly Trout Shop

39 Madison Ave.

West Yellowstone, Mt.

59758

[351]



P.14

Page ~~A-B~~

86% PAT
100 LINE

86%
+ 23%
120
~~47~~
8

stonely Nymphs

[352]



80 070
Print



ALPINE
ADVERTISING

ADVERTISING AND PUBLIC RELATIONS SERVICES

P. O. Box 187
506 West Aspen

Bozeman, Montana
59715

[353]



372

E-38

~~5-38~~

A

502⁰

E:122

[354]

e-122



MADE BY
THIS PAPER
MANUFACTURED
BY KODAK

MADE BY
THIS PAPER
MANUFACTURED
BY KODAK

MADE BY
THIS PAPER
MANUFACTURED
BY KODAK

PAPER
FACTURED
KODAK

THIS PAPER
MANUFACTURED
BY KODAK

THIS PAPER
MANUFACTURED
BY KODAK

THIS PAPER
MANUFACTURED
BY KODAK

THIS PAPER
MANUFACTURED
BY KODAK

THIS PAPER
MANUFACTURED
BY KODAK

PAPER
FACTURED
KODAK

THIS PAPER
MANUFACTURED
BY KODAK

THIS PAPER
MANUFACTURED
BY KODAK

PAPER
FACTURED

PAPER
FACTURED

[355]



STONEFLY NYMPH

~~741070~~

3-8-72 JC

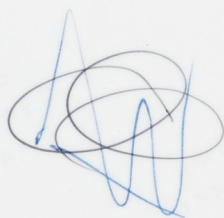
5mm grid

~~741070~~

E-39

Folder 18

~~Set out~~
~~of pencils~~



1-100% Highlite
Half tone
Thin Base Neg
L350



pt pp. 4
43% prot H.T.

6.5

X

Garman Fly
F.D.

4102 PMA KM



3-8-18

(4)

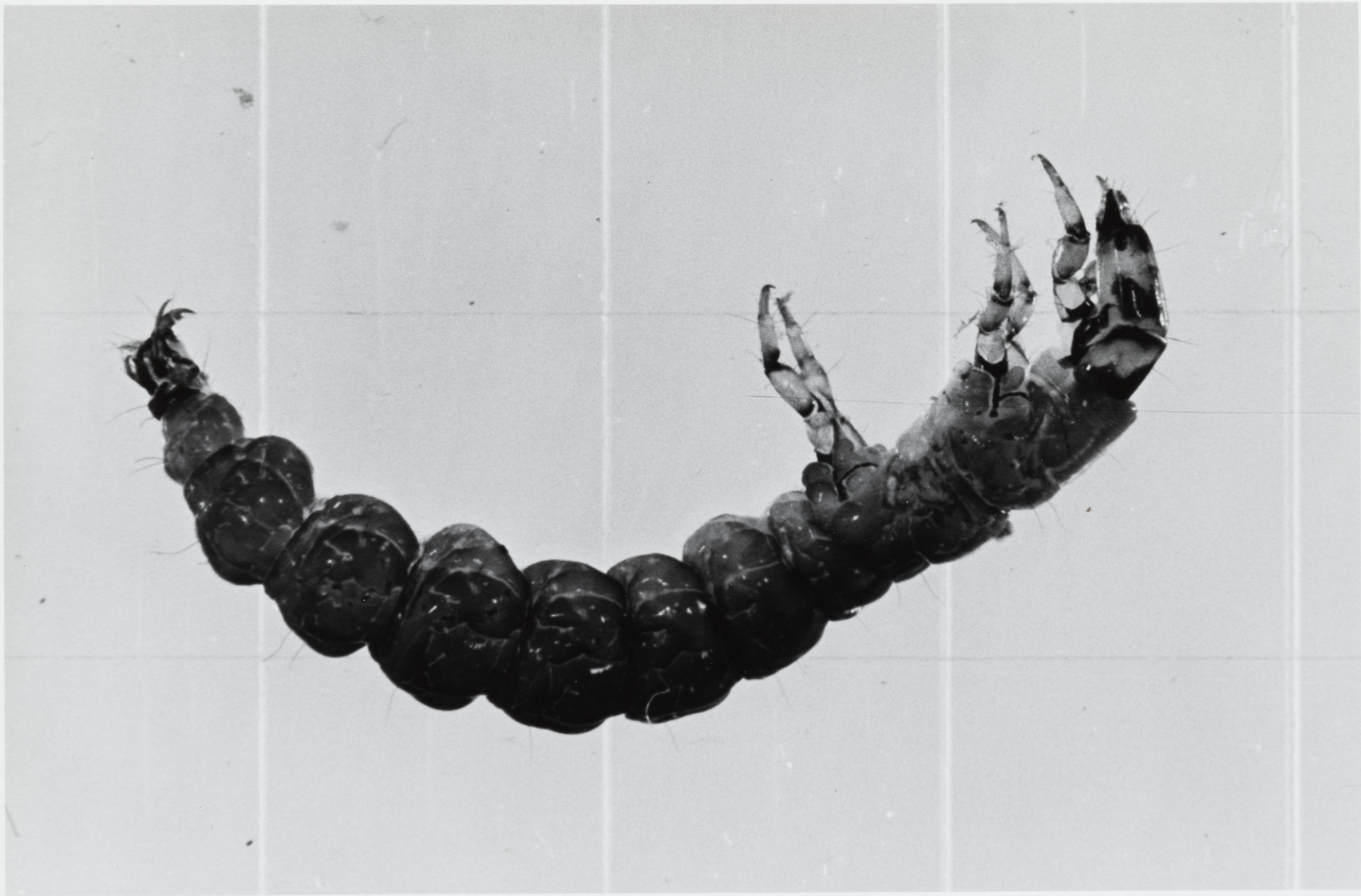
MAYFLY NYMPH

5mm grid

~~4278~~
E. 4-2

332 #T Neg
Thin Base

e-yr



3-8-18 [8] CADDIS FLY LARVA 5mm grid

E

E.45

38% PMT

e-12d

[359]



AF 3-8-18 } DAMSEL FLY NYMPH 5mm gird }

E-38
2590

2-134

[300]