

**RATES**

Lunch, soft drinks and transportation to and from the water are included in our fee. Rates for float trips are based on one or two fishermen per boat.

- FLOAT TRIPS . . . . . \$195.00 per day
- WADE OR LAKE TRIPS
- 1 Angler . . . . . \$185.00 per day
- 2 Anglers . . . . . \$190.00 per day
- 3 Anglers . . . . . \$195.00 per day
- ROAD TRIPS . . . . . \$210.00 per day
- PACK TRIPS . . . . . Call for rates
- INSTRUCTION: (Equipment Furnished)
- Half Day . . . . . \$ 65.00 per person
- Full Day . . . \$100.00 (lunch inc.) per person
- Three Day . . \$315.00 (lunch inc.) per person
- Five Day . . . \$530.00 (lunch inc.) per person
- Fly Tying, Rod Building . . . Call for rates



Fall fishing on the Madison

**DEPOSIT** - A \$50 deposit is required with your booking. Checks should be made payable to Bud Lilly's Trout Shop.

**FOR INFORMATION** or booking, call or write:



**BUD LILLY'S TROUT SHOP**  
 P.O. Box 698  
 West Yellowstone, Montana 59758  
**406-646-7801**

Summer hours: 7:00 a.m. to 9:00 p.m.  
 Winter hours: 9:00 a.m. to 4:30 p.m.

**INSTRUCTIONS**

If you are just beginning fly fishing, hiring an experienced teacher can be one of your best fishing investments. Subtleties in casting or presentation can mean the difference between a little and a lot of success. Individualized instruction are given in the following areas:

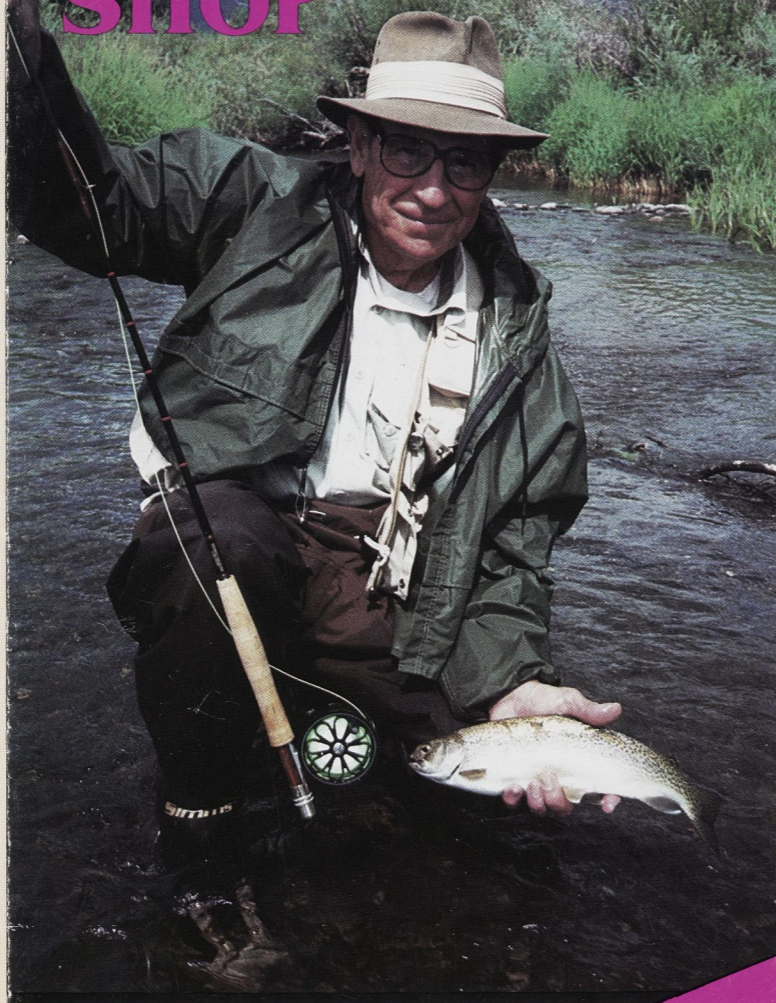
- Fundamentals of fly fishing tackle
- Essentials of knot-tying
- Casting mechanics
- Techniques of dry fly, nymph and streamer fishing
- Stream side entomology
- Tips for safe wading

**WE OFFER INDIVIDUALIZED CLASSES** (3 students per instructor). We will design classes for your specific needs and do offer **LADIES ONLY** classes as well as youth classes. (Gift Certificates available).

**BUD LILLY'S TROUT SHOP**



**GUIDE SERVICE**



Bob Allen, Hillsboro, CA

**39 MADISON AVE.**  
**WEST YELLOWSTONE, MT 59758**  
**406-646-7801**

**THE AREA**

World famous Blue Ribbon Trout Streams and Lakes are plentiful in the Yellowstone area and West Yellowstone is the hub. The headwaters of the famous trout streams in Montana, Idaho and Yellowstone Park are just a short distance. The beauty of Yellowstone Country can be enjoyed as you take a short journey to the Madison, Gallatin, Yellowstone, Firehole & Gibbon rivers in Montana or Yellowstone Park. Henry's Fork of the Snake River in Idaho is just 14 miles south. Several smaller, but excellent streams within a ten minute drive includes Duck and Cougar Creeks, Grayling Creek and the South Fork of the Madison.

If your pleasure is fishing a lake from a boat, float tubes, or shore, Hebgen and Henry's Lake are within 15 miles and many excellent lakes like Hidden and Yellowstone are with in 1 1/2 hour drive.



**THE SHOP**

Located in the center of West Yellowstone, world famous Blue Ribbon Trout streams and lakes the Trout Shop has been an institution among fly fishing for 36 years, considered the oldest and best shop in the west we have the largest fly selection in the north west and feature quality products that will handle all of your needs at standard prices. Our complete tackle shop carries Orvis, Sage, Winston, Loomis, Hardy, ATH Hart, Fothergill, Scientific Angler, Courtland, Columbia, Simms, James-Scott, and others make up our product lines in hard goods.

We specialize in the best clothing available for the fisherman. Among our product lines are Duxbak, Orvis, Columbia, Simms, Marmot, Barbony Cotton Wear, Royal Robbins and George Stafford.

The Basement Gallery has a wide range of artwork, pottery and gifts for the discriminating art buyer or fisherman looking for a special gift to take home to a deserving wife.

A new feature of the Trout Shop is a Fisherman's Den with free tying benches and tools available along with videos to view or just a comfortable atmosphere to discuss the day's fishing while relaxing. An expanded fly-tying department will assist your needs.

Make Bud Lilly's Trout Shop your fly fishing headquarters when you come to enjoy the splendor of South-western Montana. We will be happy to assist with any of your accommodations to make your western fishing experience special. Please feel free to contact us.

**THE SEASONS**

Montana, Yellowstone Park and Eastern Idaho offers some of the best fishing in the world from April through November.

**SPRING — April to June 15**

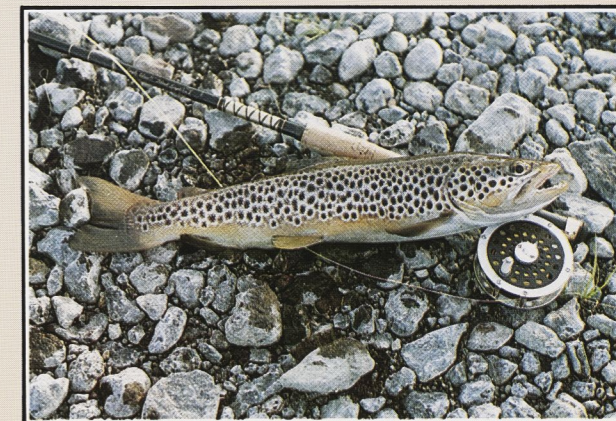
During the early season, the water conditions can vary greatly due to seasonal runoff. Fishing is often at its best or worst. The Henry's Fork of the Snake River is usually very productive and the rivers on the west side of Yellowstone Park, (Madison, Firehole, Gibbon, Gardner) can be at their best. Good catches of larger Brown and Rainbow Trout are taken on larger nymphs in the Madison. A trip to fish the Big Horn in eastern Montana can produce trophy fish.

**SUMMER — June 15 to July 31**

The water condition generally comes into its prime during this period and the weather is usually warm and comfortable with occasional afternoon showers. There are great hatches that characterize this period - the Green Drake Hatch on the Henry's Fork, the most spectacular is the Salmon Fly Hatch, which occurs on many of the waters of this area, and the profuse Caddis Hatches. Book early if this is your preference, it is a very popular time.

**FALL — August to Season's End**

The water conditions are generally low and clear. Hatches are abundant with Caddis, Mayflies, and lesser Stone flies in profusion. Hoppers and other Terrestrials abound until the heavy frosts do them in. All the major streams provide excellent angling and the back country fishing is at its peak. When the cold weather hits, Streamer fishing starts and this is the time to land a trophy Brown Trout. The Spruce Fly Hatch on the Big Hole River in mid-August is a trip not to be forgotten. The Big Horn really turns on in September with abundant Tricorythodes Hatches that produce many trophy Rainbow Trout.



Madison Brown Trout

## GUIDED TRIPS

By using a guide, you will have the advantage of current knowledge of conditions, hatches, techniques and where it is "happening". Our guides are experienced professionals that want to help you catch fish and will work long and hard to make your Western Experience special. A guide is an instructor for the beginner, and can be your best fishing investment.

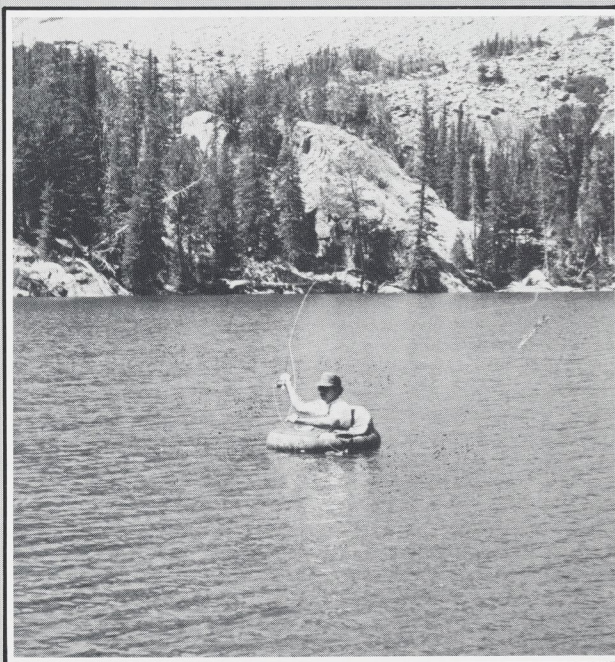
### DAILY FLOAT OR WADE TRIPS

These include trips on the Madison, Henry's Fork, and Upper Yellowstone Rivers in addition to Float Tubing Heben, Henry's, Hidden Lakes or a variety of other nearby lakes in Montana and Yellowstone Park. Our guides use McKenzie River Boats for float trips. We float tube or fish from an outboard powered aluminum 16' boat for lake fishing trips.

Our professional guides are experienced at fishing the smaller rivers and streams of Yellowstone Park and the Spring Creeks around Livingston as well. We can organize horse back trips into the high country with experienced guides as well. (Call for details).



We can help you plan every detail of your Western Fishing Trip. If you need additional information contact us for our Free Hatch Map and Catalog.



Tom Miller, Riverside, CA

### ROAD TRIPS

There are several outstanding rivers in Montana that fish extremely well during certain times of the year. These require overnight road trips and are designed to allow you to fish these excellent waters during their peak fishing times.

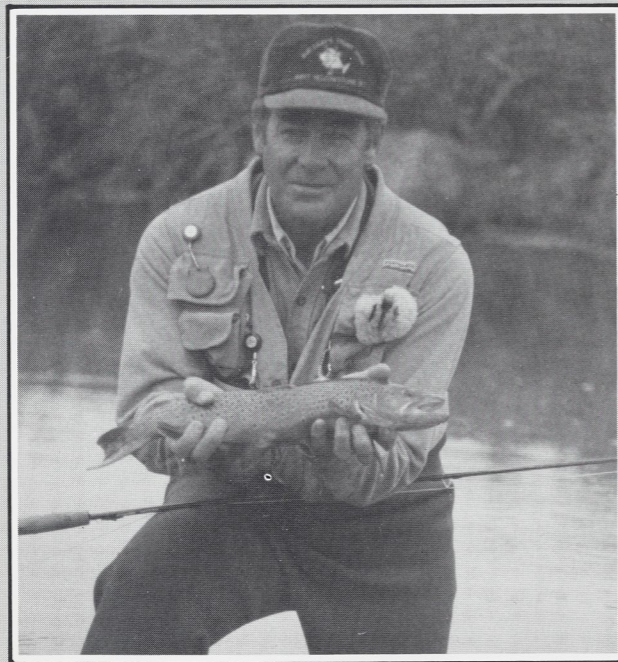
**BIG HOLE RIVER** — June 15 to July 15 during the Salmon Fly Hatch, the Caddis Hatch or in August for the Spruce Fly Hatch.

**BEAVERHEAD AND JEFFERSON RIVERS** — Late Summer Season through Fall with Streamers and Nymphs. Good trophy fish time.

**BIG HORN RIVER** — The Spring (April and May) and Fall Seasons (September, October, November) offer excellent fishing for big fish as well as a chance to have a 50 fish day during these times.

**YELLOWSTONE RIVER** — The lower Yellowstone is excellent during the early Fall season.

**MISSOURI RIVER** — Fall is Trophy fishing time for Browns.



Jim with 18" Brown Trout from the Big Horn.

## PLANNING YOUR TRIP

The West Yellowstone area is one of the most spectacular scenic wonders in America. The scenery varies from the towering Madison range to the meadows and high plains of Yellowstone Park.

The weather is beautiful during most of the fishing season, but somewhat unpredictable. Bring your camera and clothing suitable for any weather.

### FISHING TACKLE

In our part of the world, the fly fisherman may have the opportunity - or the necessity - of changing from a size 22 to a size 2 fly in the course of one trip. A good eight to nine foot, six or seven weight rod with a floating line will handle most situations.

Chest waders with felt soles will make wading easier and safer.

Call or write for recommendation on flies. You will need a variety of leaders and tippet ranging from 3X to 7X depending on the type of fishing you will be doing.

The Trout Shop carries a wide range of tackle to assist you.

### CLOTHING AND WEATHER

You should prepare for everything from very warm weather to rain and snow. Warm clothing, sun screen, chap stick, polaroid glasses, a rain coat, and a hat are necessities. The altitude at West Yellowstone is 6,666 feet.

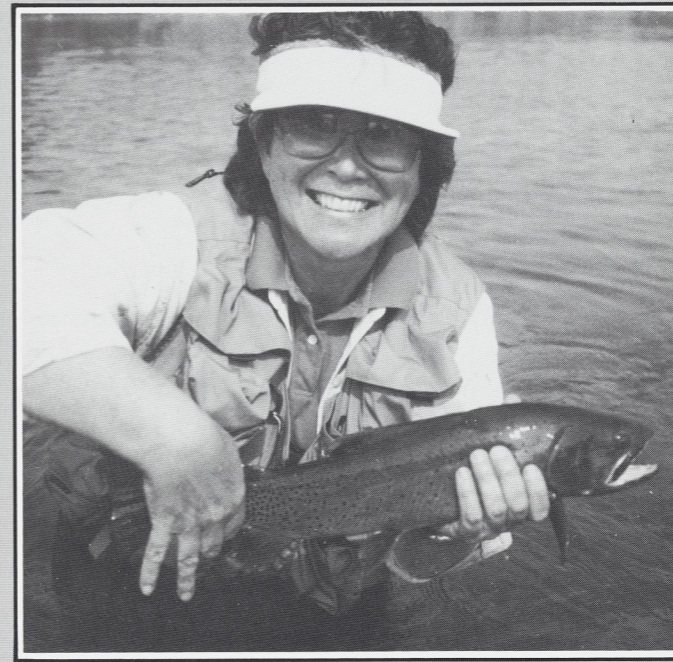
The Trout Shop carries an excellent variety of clothing to handle your needs.

### LODGING AND FOOD

West Yellowstone has a very good selection of motels and restaurants in varying price ranges, in addition to several campgrounds and guest ranches near by. Lodging accommodations should be made in advance - we will be happy to help with reservations or recommendations.

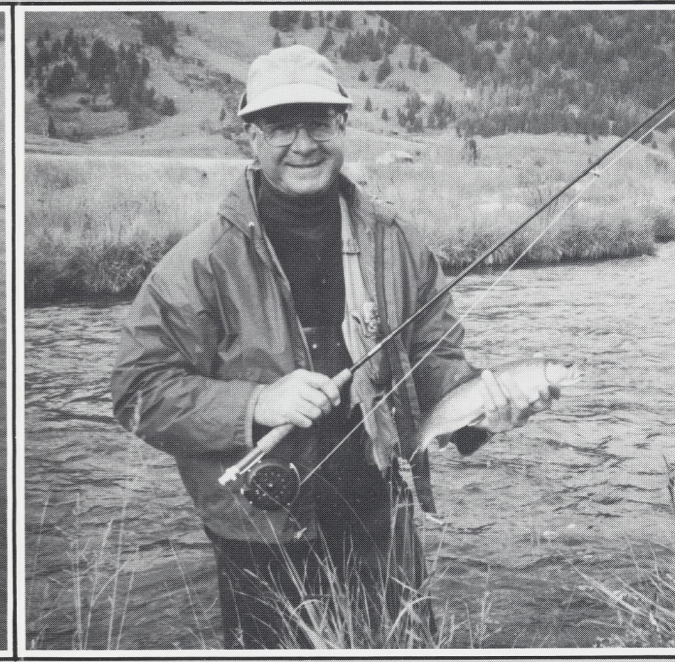
### TRANSPORTATION

West Yellowstone has an excellent airport with daily scheduled jet air service. Idaho Falls, Idaho, (110 miles) and Bozeman, Montana, (90 miles) are good access routes. Car rentals are available at all three airports. We will shuttle parties to the local airport at no charge.



Vickie Johnson, Hillsboro, CA

Cutthroat Trout on the Yellowstone



Thomas Large, Altuna, PA

Rainbow Trout on the Madison

Good Morning!

LILLY & BERKLEY 1975 FLY FISHING PROGRAM

- 9:00 A.M. Introduction-Orientation of the day's program -  
Bud Lilly
- Doug Swisher Presentation
- 10:00 A.M. Break for coffee and donuts
- 10:15 A.M. Charlie Brooks Presentation
- 11:15 A.M. Greg Lilly Presentation
- 12:00 Travel to stream - - Lunch
- 1:15 P.M. Collection and discussion of trout food - -  
Swisher-Brooks-Lillys'
- 2:00 P.M. Doug Swisher  
Demonstration-Methods of Meadow Stream Fishing
- 2:30 P.M. Charlie Brooks  
Demonstrations-Methods of Fishing Nymphs
- 3:00 P.M. Break
- 3:15 P.M. Greg Lilly  
Demonstration-Methods of Fishing Weighted Flies
- 3:30 P.M. Bonnie and Annette Lilly  
"Ladies Only" - Demonstration  
"Men Only" - Individual instruction in  
Methods of fly presentation
- 5:00 P.M. Program Ends

# THE TROUT SHOP'S FLY FISHING SCHOOL

WEST YELLOWSTONE, MONTANA

JUNE 18 - 19 - 20, 1969

## WEDNESDAY, JUNE 18

8:00 A.M. — 8:30 A.M.

Welcome and Orientation by  
Bud Lilly — at THE TROUT SHOP

8:30 A.M. — 11:30 A.M.

Casting Instruction by  
Lefty Kreh and Jim Green  
(Have your tackle with you)

11:30 A.M. — 1:00 P.M.

Lunch Break  
(On your own)

1:00 P.M. — 6:00 P.M.

Streamside Instruction.  
Wading Techniques, Locating Trout,  
Reading the Water, Presenting the Fly  
(Instructor will pick you up at motel)

6:00 P.M. — 8:00 P.M.

Dinner Break  
(On your own)

8:00 P.M.

Tackle Techniques — at  
THE TROUT SHOP

## THURSDAY, JUNE 19

9:00 A.M. — 11:30 A.M.

Casting Instructions  
(Gather at THE TROUT SHOP)

11:30 A.M. — 1:00 P.M.

Lunch Break  
(On your own)

1:00 P.M. — 6:00 P.M.

Fishing with Assigned  
Guides  
(Guides will pick you up)

6:00 P.M. — 8:00 P.M.

Dinner Break  
(On your own)

8:00 P.M.

Fly Tying Demonstration at  
THE TROUT SHOP

## FRIDAY, JUNE 20

9:00 A.M. — 11:30 A.M.

Casting Instructions  
(Be prepared to spend the day)

11:30 A.M. — 1:00 P.M.

Lunch Break  
(On your own)

1:00 P.M. — 5:00 P.M.

Fishing with Guides

5:00 P.M.

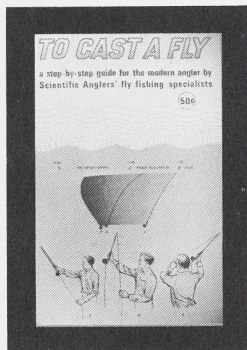
Streamside Dinner and  
Presentation of Diplomas

Closing Ceremonies

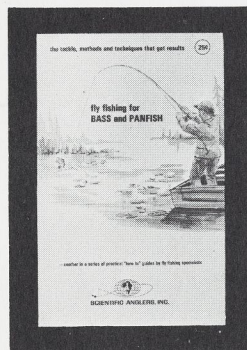
If weather permits, all of  
Friday's activity will be on  
the river. Transportation will  
be provided for family to join  
students for supper on the river.

# PROGRAM

*for the fly fisherman*

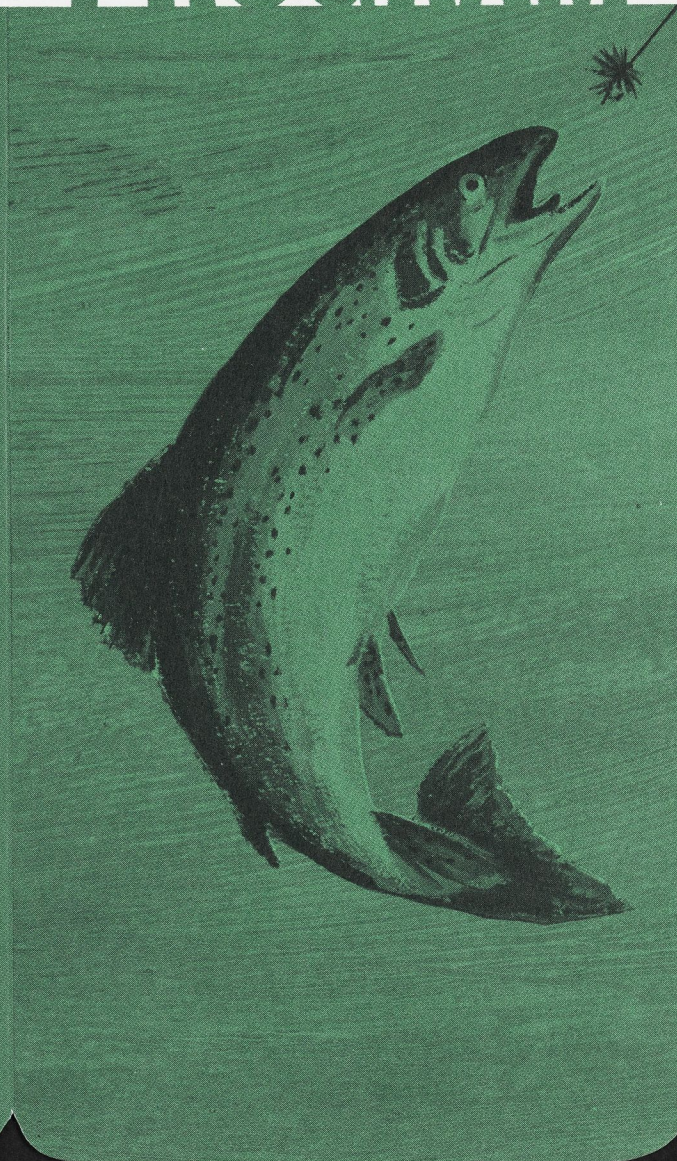


**TO CAST A FLY**  
— a step-by-step pocket  
guide to modern fly  
casting tackle, theories,  
methods and techniques  
advocated by leading  
casters. Thirty-six  
illustrated pages of  
casting help.  
**50c per copy.**



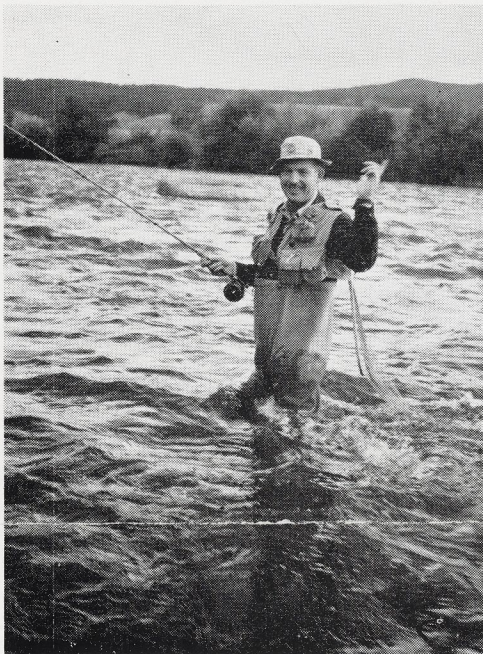
**FLY FISHING FOR  
BASS AND PANFISH**  
— the strategy and  
tactics that get results  
on streams, rivers,  
ponds and lakes — plus  
the right choice of  
tackle, bugs and flies.  
**25c per copy.**

Scientific Anglers, Inc.  
is pleased to make this  
program available in the  
interest of conservation  
and sportsmanship.



address requests to  
FLY FISHING SPECIALISTS  
**SCIENTIFIC ANGLERS, INC.**  
P.O. BOX C-95 MIDLAND, MICHIGAN 48640

Printed in U.S.A.



HOWDY! Each season we hear fishermen, after admiring some item in our store, say "Well maybe I'll get one for Christmas." We listen carefully to these wishes and hope to play a part in making them come true.

If your fisherman has expressed a wish for anything in fine fishing tackle or related items, rush us a letter. We pride ourselves on knowing our customers needs and can help make the right selection.

A gold star on this letter indicates that your fisherman is a member of the exclusive 'Bud Lilly's Trout Lunker Club.' Write for special **MEMBERS ONLY** gift suggestions.

The following are some "Wishes" we've heard often!

Best wishes for the holidays

*Bud Lilly*      *Pat Lilly*

FERALITE GLASS RODS BY FENWICK

FLY RODS 7½' to 9' .....	\$28.50 — \$32.50
SPIN RODS 6' & 7' .....	\$24.50 — \$27.50
4 PIECE FLY AND SPIN RODS WITH CASE FOR THE ANGLER THAT PUTS A FISHING ROD IN HIS SUITCASE .....	\$27.50

Matching reel and lines suggested on request for all rods.

FISHING VEST, WADERS, NET SIMILAR TO THOSE I'M WEARING IN THE ACCOMPANYING PICTURE ARE WISHES OF EVERY ANGLER. MODELS AND PRICES ON REQUEST.

BUD LILLY'S YELLOWSTONE HAT BY RESISTOL. WESTERN STYLING, MODERATE BRIM, LEATHER BAND, CAMEO COLOR. ALL SIZES..... \$15.95

BUCKSKIN GLOVES OF AUSTRALIAN GOAT ..... \$6.50

MAINE MOCCASINS BY QUODDY — Double soles - natural color ..... \$9.95

VIYELLA LONG SLEEVE, TURTLE ZIPPER NECK SHIRT BY DUOFOLD — excellent cold weather fishing, hunting or skiing shirt. Black or White. S—M—L ..... \$7.50

WIGWAM SOCKS

FRENCH SPUN WORSTED WOOL "TOP DRAWER" SOCKS BROOKTROUT

BACK GREEN OR RAINBOW BELLY WHITE, All sizes .....	\$2.25
NORWAY 100% WOOL SOCK — IDEAL FOR WADING SHOE OR SKI BOOT .....	\$2.50
THE CAMPER BOOT SOCK, 8" top - 85% Wool 15% Nylon .....	\$2.00
THE GROUSE BOOT SOCK, 10" top - 85% Wool, 15% Nylon .....	\$2.25

McGREGOR BEAN BAG PARKA — LIGHTWEIGHT 100% NYLON — IDEAL FOR ALL SPORTS — WASHABLE — S—M—L BLUE—BROWN—WHITE..... \$7.95

TOPOGRAPHICAL MAPS OF THIS AREA, MAPCASE, MILEAGE SCALE WITH COMPASS Cmpt. \$10.00

COMPLETE SELECTION OF BOOKS ON TROUT FISHING: SUGGESTIONS

TROUT, Ray Bergman .....	\$7.50
TROUT MADNESS, Robert Traver .....	\$4.95
MATCHING THE HATCH, E. Schweibert .....	\$7.50
HOW TO FISH FROM TOP TO BOTTOM, Sid Gordon .....	\$5.00
FLIES, J. Edson Leonard .....	\$5.95
PACIFIC NORTHWEST FLY PATTERNS, Patrick .....	\$1.50

LIGHTWEIGHT ALUMINUM ROD CASES TO FIT ALL SIZE RODS ..... \$2.95 — \$5.00

BUCKSKIN REEL POUCH ..... \$1.00  
(please state size on above articles)

WRAP AROUND POLAROID GLASSES FOR THE FISHERMAN ..... \$4.95

KNIVES: 02 853

SWISS ARMY KNIVES

Red Handle 3 1/2" — 13 pieces with ring, including tweezer and Tooth pick.....	\$14.50
Red Handle 3 1/2" 11 pieces with ring including tweezer and Tooth pick .....	\$11.50
Red Handle 2 1/4" Blade, File and scissor. Ideal for ladies .....	\$4.50
CASE BULLDOG 5 1/2" closed. Bone stag handle. Saber ground blade. Including Sheath .....	\$10.00
STRONG CHAIN FOR POCKET KNIVES 15" long.....	50c

ALL OTHER MERCHANDISE SEEN IN THE SHOP THIS SUMMER IS ALSO AVAILABLE INCLUDING A GOOD STOCK OF FLIES BOTH WET AND DRY. FEEL FREE TO WRITE FOR ADDITIONAL INFORMATION AND PRICES.

M E M O R A N D U M

TO: OFFICERS OF THE S.D.T.O.T.O.O.T.S.O.T.L.M.R.

FROM: YOUR HIGHLY RESPECTED SUPREME 4X STRETCH RESISTANT TAPERED  
LEADER

SUBJECT: FISHMAS, REVISED AGENDA.

---

IMPORTANT: This supercedes & replaces the previously-issued agenda, inasmuch as several vital events were inadvertently omitted from the earlier version. All members will be expected to cooperate to the utfishmost in observing the rigid time schedule of fish-events.

---

5:15 - 5:41 p.m. Grand arrival of entire cast. NOTE: Admittance by password only. 1961  
PASSWORD: Trick or trout. NOTE: Doors now close at 5:41, one minute earlier than announced on previous agenda. Stragglers subject to excessively high fine.

5:41 - 5:50 p.m. Heavy drinking.

5:50 - 5:58 p.m. Hanging, displaying, admiring of Fishart. Any members failing to bring Fishart subject to ridiculously high fine.

5:58 - 6:04 p.m. Jack Daniels Sipping Contest.

6:04 - 6:25 p.m. Colored fishegg hunt led by Big Fishbunny.

6:25 - 6:31 p.m. Heavy drinking, community fishsing.

6:31 - 7:32 p.m. Games of fishchance, featuring fishpoker, as announced in previous agenda. Anyone caught cheating in clumsy manner subject to astronomical fine.



- 
- 7:32 - 7:39 p.m. BIG MARTINI BARREL - Dive For Olives Contest.
- 7:39 - 8:44 p.m. Fishconcert Hall program.
- 8:44 - 10:24 p.m. Fishdining Room. Eats. Oratory.
- 10:24 - 11:48 p.m. Fishlantern slides. Fishmovies.
- 11:48 - 11:59 p.m. Research program; join in the big gin taste test.
- 11:59 - 12:31 a.m. Joyous celebration of Fishnew Year.
- 12:31 - 1:17 a.m. Fishart auction.
- 1:17 - 1:59 a.m. Ritual dance around Mayfish Pole.
- 1:59 - 2:01 a.m. INTERMISSION. (Note that this new event must of necessity be scheduled later than originally planned, and also shortened somewhat.)
- 2:01 - 2:26 a.m. Heavy drinking and special entertainment. For the benefit of TV lovers who tonight are being deprived of their favorite relaxation, the management is bringing in a gang of trained hoodlums and street rowdies who will engage in violent hand-to-hand fighting in the comfort of the living room. Canapes served.
- 2:26 - 2:47 a.m. Committee reports and special announcements.
- 2:47 - 3:19 a.m. Fishdancing. High-keyed revelry.
- 3:19 - 4:02 a.m. Speech by Batwing Beethoven: "Golfishing, or Nibbles and Niblicks."
- 4:02 - 4:26 a.m. Report from Society Astrologer, together with fishoroscope for year to come.
- 4:26 - 5:00 a.m. PASSOUT ROOM: Ritual revival of qualified members, followed by expulsion of Russian spies by Mrs. Y.W.W.

- 
- 5:00 - 5:16 a.m. Heavy drinking and heated arguments among disagreeable members.
- 5:16 - 5:43 a.m. Demonstration of tackle fondling by G.T.F.
- 5:43 - 6:01 a.m. Wordy speech by Exalted Silver Doctor:  
"Relationships of Poly-unsaturated Fish  
With Saturated Fishermen."
- 6:01 - 6:11 a.m. Hatchery Conditions Report by Y.W.W.
- 6:11 - 6:32 a.m. Heavy drinking and bare knuckle fist fighting among members.
- 6:32 - 7:22 a.m. Breakfast and off to the stream.

---

BRING MONEY.

4x/oh  
(4-10-61)

# FISHING GUIDE

By DON MARTINEZ  
West Yellowstone, Mont.

There is no better trout fishing region in the United States than the section within a radius of 100 miles around West Yellowstone. Bigger fish may be taken during a brief period in the fall in certain Steelhead rivers emptying into the Pacific, and there are places where a greater number of fish may be caught at times, but considering the great variety of water, weather conditions, beauty of scenery, accessibility, large average size of fish, long season and safe wading this district is without a peer. There are hundreds of miles of large rivers running beside the highways, and other hundreds of miles of open water to be reached by side roads or trails. Practically all of this water is on public land, either National Park or National Forest, open to the public.

This map is only an outline of the available fishing. It will help you plan your time to advantage, however. Space does not permit a full description of each place. Where the map itself is obscure, or the text is not clear, please call on us in the store for fuller information. Conditions vary from time to time; a stretch of water that was barren in June may be excellent in August. It is our business to keep posted.

## GAME LAWS

To insure continued good fishing the authorities both in and out of the Park occasionally close certain waters to fishing. License requirements vary from year to year. To be on the safe side consult us first.

## SURPLUS FISH

We are always grateful for the loan of an exceptionally large trout for display purposes, but we deplore contests and competitions based on size or number of fish caught, regardless of method employed. Competition has no place in trout fishing. A large catch of average sized fish is interesting chiefly to the person that caught them. Well-meaning people sometimes offer us fish as a gift. We can not use them. Unless you intend to ship out a catch, please return surplus trout to the water. It is harder at first to put back a good fish than it is to catch it, but returning fish can be made a habit like anything else. Some of the best fishermen do not carry a net or a basket, releasing all their fish except an occasional very large specimen.

## SELECTION OF FLIES

Early and late in the season, trout are taken on very large and gaudy flies, either streamers or bucktail patterns. Our experience during the past seasons indicates that the use of these large flies in mid-season is a serious mistake. Instead of the bulky Jock Scots and squirrel tails used in the past, the more successful anglers now favor flies on hooks number 10 and 12 for the Madison River and in Hebgen Lake. The marked preference of the local fly fishermen for flies either dark in color or solid black should be heeded by strangers to these waters. The most effective wet flies in past seasons have been the wooly worm and rough bodied nymph flies. Either of these two were consistently deadly in a small size when fished on a light leader, IX being the most popular weight with some experts going to 3X,

which is perhaps too light for safety in wet fly fishing where the fish average better than two pounds. A careful dry fly man can get along with 3X, rarely popping off a fly, but will lose flies right along when fishing wet with leader finer than 1X. However, the greater number of strikes due to the use of light leaders compensates for the loss of an occasional fly.

Favorite dry fly patterns include the Adams, Grey Fox, Dunham, Special Ginger Quill and the Bi-visibilitys. During the month of June long hackled Variants on a 10 or 12 hook work well, due to the presence of the Brown Drake on the water, but later small flies do better. At times size 16s are a necessity.

Large "buggy" dry flies produce well when the Stone Fly hatches appear. These hatches occur at various times on the streams and lakes.

Flies tied to imitate the grasshopper have been very effective for big fish. The grasshopper type fly fished, as the occasion demands, wet or dry is a good bet on most streams in this area.

As the experienced fisherman knows without being told, the best dry flies are apt to be small in size and dull in color. The nearer they approach the natural insects in size and outline, the more likely they are to work. Here again pattern is less important than good floating qualities.

Commencing in 1938 we began collecting and classifying natural trout stream insects from both the Madison and the Snake River watersheds. It is our intention to continue collecting the insects on which the trout feed and to work out artificials with the cooperation of certain expert fishermen. Dry-fly men can make a more intelligent selection of flies after examining the actual insects than they can hope to do by acting on hunches, or taking the advice of some tackle dealer in a remote city. The writer is well equipped to tie flies in imitation of the natural insects of this section, having been a fly maker for 20 years. Where the pattern permits we use game-cock hackle exclusively, insuring durable, high-floating flies. By selling direct to the user we keep our prices at a level actually lower than the cost of ordinary hardware store flies.

N. B. Hebgen is an artificial lake created by the dam at its western end. The map shows the shore line at full highwater stage. When the water is at a lower level, certain bays will be dry ground with the streams flowing in their old channels. Choice fishing will always be had near where streams enter the lake but when a lower water level exists, the streams mouths will not be where they are shown on the map.

## Numbered Circles On the Map

1. Mouth of the South Fork. Go West on No. 191 about 7 miles, turn right, across road from schoolhouse, checking road by small creek, go north about 3 miles to shore of lake. Many large fish will be seen feeding in the evening in the slowly moving

water of the river channel. Wet flies best, boots or waders needed.

2. The South Fork. Turn right on Lake Shore road (marked with sign) 4.1 miles West of town on 191 as above, where straight stretch of highway ends. The stream may be reached by turning off on any of several side roads to the left, after driving two miles into the woods. Perfect Dry-fly water, Hip boots are sufficient.

## 3. The Peninsula —

Check speedometer as you turn off main highway onto Lake Shore Road. Go 4.1 miles and turn off Lake Shore Road to your left. Fish anywhere around this peninsula, particularly in the Bay. The channel runs south along the east side of the point, and can be reached by wading. The west side of the point may be fished from shore. Grayling are taken here at times.

4. Mouth of the Madison. 3.5 miles North of town, turn left at Lake Shore Road. Park anywhere about .5 miles after leaving highway. Fine run of slow-moving water for either nymphs or wet-flies. High waders needed here.

5. Cross Madison River and turn left 300 yards at top of grade. Park in grove of pine trees a half mile west of highway. River channel runs along this shore of the lake. Boots required here. Try dry flies or nymphs in swampy back-water pools scattered among the willows for Eastern Brook Trout if lake shore does not produce.

6. Angle right from highway on old gravel road 3.4 miles north of town coming out on Madison River near Thornton's Camp, at old wooden bridge, that can be seen upstream from present cement bridge on highway. Good stretch of dry-fly water on near side of little island in the river about 300 yards above old bridge. Fish close to either bank.

7. Turn right on dirt road at head of grade 300 yards after crossing bridge. About 1.8 miles after leaving highway the river's presence will be indicated below high bank. River may be reached from several parking places along here. All fine water thru this stretch. Wet flies best. Waders needed. Few fishermen work this water.

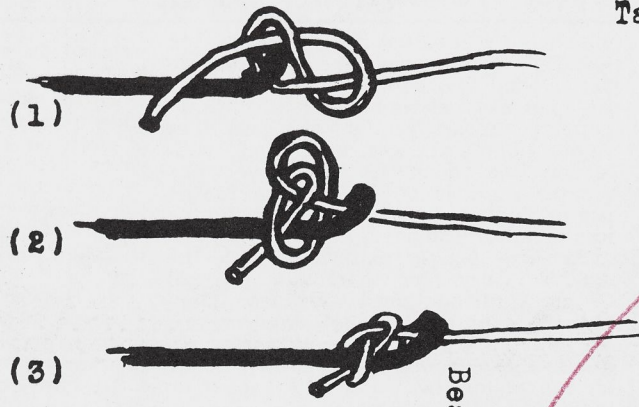
8. Turn right at Forest Service sign "Baker's Hole" 3 miles north of town on 191. Very good place late in the season. Also a good place for a voluntary swim.

9. Back of the Barns. Most over-fished and at the same time the most productive stretch of the Madison. Turn left one mile after entering Park. Road leads into a clearing with many buildings, the old stage-barns being the most prominent. The course of the river will be seen about a half mile distant. Two white trestles mark Hole No. 1, next one downstream is Hole No. 2 distinguished by big rock where road leads down to the water and No. 3 is the last pool working down stream. If all three pools are busy, continue down stream on dirt road running along the edge of the high ground about a mile, and try your luck. The water for some distance above and below the 3 "Holes" is shallow and lacking in hiding places which probably explains the presence of so many trout in the "Holes".

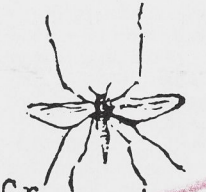
(Continued on Back Page)



THE FIGURE EIGHT KNOT



OUR FURNISH ART WORK

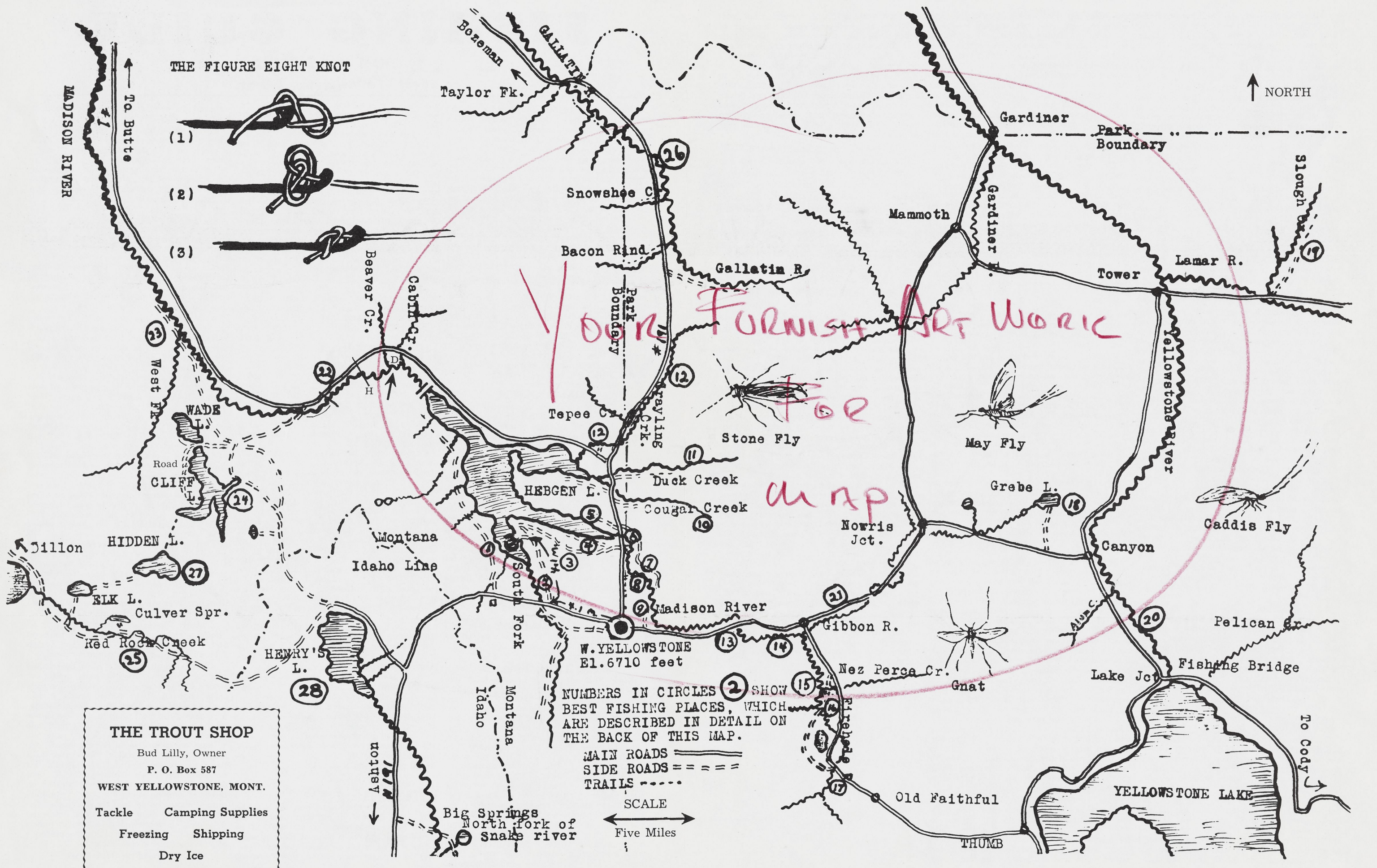


NUMBERS IN CIRCLES 2 SHOW BEST FISHING PLACES, WHICH ARE DESCRIBED IN DETAIL ON THE BACK OF THIS MAP.

MAIN ROADS SIDE ROADS TRAILS

SCALE Five Miles

**THE TROUT SHOP**  
Bud Lilly, Owner  
P. O. Box 587  
WEST YELLOWSTONE, MONT.  
Tackle    Camping Supplies  
Freezing    Shipping  
Dry Ice



10. Cougar Creek. An ideal Eastern Brook Trout stream if there ever was one. Slow and deep. Banks are brushy in places. Worms are the safest bet here.

11. Duck Creek. From the highway down to Hebgen Lake the banks are very thickly grown with willows. It is not an easy stretch to fish, but pays well for the user of dry flies. Just inside the Park line is a vast meadow running back for miles to the east. Here is an unbeatable stretch of perfect dry fly water. Moderate depth and slow current. The trout are mostly Browns with Rainbows, Brooks and Grayling for variety.

12. The Grayling. Excellent dry-fly stream up to August 1st. Turn off highway to the right before reaching the place where the stream parallels the road. Leave car when creek is reached. Fish up as far as barns on left bank facing up-stream. Fish will be in pockets in the riffles. Dry-fliers best, hip boots sufficient.

The Grayling in the Park offers nice fishing at a point 15.5 miles from town. Moose trouble occurs here sometimes; cows with calves should be avoided.

13. About 7 miles inside the Park Gate, the road crosses the Madison. Upstream from the bridge is a stretch of very interesting dry-fly water. The fish lie along the bank which is cut under by the current and also in depressions in the bed of the river. Can be fished from the bank.

14. The Nine Mile Hole. A little less than nine miles inside the Park gate. Two very large boulders about 150 yards apart on the near bank mark this spot. The boulders resemble haystacks that have been eaten away near the ground. The run of deep water past the space between the boulders is nearly always good for at least one big rainbow. Large flies, fished wet. Waders or hip boots.

15. The Firehole. Neither too hard nor too easy, the Firehole is the ace dry-fly stream of this section. The fish are mostly Browns with a fair number of rainbows. The thick growth of weeds in the stream harbors countless insect larvae. There is a big hatch of flies of one sort or another every evening and rising fish can be found at all times. Fish over 3 pounds are no rarity. The water is warm but the fish are in no way weakened because of this fact. Some fine water lies right beside the main road where the canyon widens out above the falls. If you can get past this stretch without stopping to fish, you reach—

16. The Mouth of the Nez Perce. Turn off highway to right crossing the Nez Perce Creek on plank bridge seen from highway Park anywhere in the next quarter mile. This is a rather deep, slow-moving stretch of water, but feeding fish are most apt to be close to either bank or in the shallow glides. Very small dry flies are indicated here besides larger imitations of the various sedge flies that are nearly always in evidence. When rising fish are scarce, try nymphs. Waders needed, but good fishing can be had from the bank at times.

17. Biscuit Meadows. Park near sign-board on highway reading "Biscuit Basin" and walk to Firehole River about one hundred yards to the west. Not much fished in this stretch, the River holds many big fish in this portion.

18. Grebe Lake. The place to get Grayling. This lake is closed to fishing by the Park authorities until late in the season. Ask before planning to visit it. A hike of about 40 minutes from the gate beyond which cars are not allowed brings you out on the southeast corner of the lake, near

the Grayling Hatchery. Mark the spot where you emerged from the woods well, if you plan on staying till dark. Best fishing will be found around east end of lake near mouth of a small creek. Besides the very plentiful Grayling there are some fine rainbows to be had here. Grayling are a moody fish, but by staying till dusk, a good catch is reasonably certain. Rather small flies are preferred, fished wet. Gauze wing patterns are highly recommended and squirrel tail patterns in size 12 will be found effective.

19. Slough Creek. There are very large Cut-throat in the flat stretches to be reached by the road and trail indicated on the map.

20. After viewing the Grand Canyon of the Yellowstone time yourself to reach the part of the Yellowstone River above the falls anywhere from a mile upstream from the mouth of Alum Creek to a point 2 miles down from the outlet, at sundown. Every evening there is a big rise of Yellowstone Cut-throat, all running about a pound. Dry-flies size 14 or 16 to match the duns on the water will do the trick here. Watch out for white marl patches in the bed of the stream: they are very slippery. There is no handsomer variety of trout than these Cut-throat.

21. The Gibbon. Open water in the meadows. Plenty of good trout but by no means easy to catch. Recommended as a change from fishing in big waters. Dry-flies. Boots.

22. The Lower Madison. In the Gorge. Unlike the Upper Madison where the trout all run around two pounds, down here they come in all sizes. Your next fish may be six inches or six pounds. Most of them will be around 10 inches, and flies size 8 or 10 are most useful. The bed of the river is made up of round, smooth boulders, the current is swift, so unless you are experienced in swift water wading it is advisable to pass up the Madison below the Dam. Neither felt nor hob-nails hold well on the smooth rocks.

23. The Madison along here is not as swift and treacherous as in part nearer the dam, but it is still no place for a novice. To reach the back road on the other side of the river, cross on the plank bridge leading to Cliff Lake Post Office.

24. Cliff Lake. Lake Tahoe on a small scale for scenery. This is the best place we know, for a specimen Rainbow. Fish over five pounds are quite common. Boats, guide and outboard when required, may be had at Neely's Ranch at very reasonable rates. Early and late in season is best time for exceptionally large trout. Take warm clothing; sudden showers are frequent at this altitude but seldom last long. Medium sized Cut-throat occur in enough numbers to keep the fisherman interested if the big Rainbows happen to be sulking. Very large flies are needed and the best heavy leaders at your disposal. Neely's Ranch is outfitting point for pack trips to Hidden and Otter Lakes.

25. Red Rock Creek in Centennial Valley. 35 miles from town. Eastern Brook Trout and Grayling in good numbers. Not recommended after August 10. Red Rock Lakes are the home of the last surviving trumpeter Swans. A smaller stream than any listed above; hip boots are all the protection needed. Fish average about 10 inches.

26. The Gallatin. The River is of only moderate size where it first meets the highway but grows larger every mile it travels. After summer showers it is sometimes milky for a short time. Usually it is exceptionally clear, always cold and for the most part rather swift and shallow. Like the Lower

Madison it holds fish of every size but most of them are well-conditioned Rainbows of about three-fourths of a pound. Despite its fast current it is an excellent dry-fly stream. After August 1st flies made to imitate a grasshopper have been very effective.

27. Hidden Lake can be reached in an easy one day trip by way of Elk Lake. Fishermen are ferried across Elk Lake and driven to Hidden Lake. A reasonable charge covers transportation and boat hire on Hidden Lake. Flies similar to British Salmon flies work well here.

28. Henry's Lake. South of the West Entrance to the Park about 15 miles is Henry's Lake. An Idaho license is required. No spot in the U.S.A. offers bigger prizes to the fly fisherman. Shore fishing is good from sundown on into the night. Boats are available in several places, Rich's Valley View ranch being the most accessible. Brooks, Natives and Rainbows are the three species found in Henry's Lake. They will run 2½, 4 and 6 pounds respectively on the average. Use flies no smaller than 8s and the heaviest gut leaders. The fish are found close to drowned willows and have to be held away from brush.

The north fork of the Snake River rises at "Big Springs" shown at the lower edge of the map. It is a wide, slow moving stream down as far as the Island Park Reservoir, very clear and cold. High waders are needed but the wading is safe and easy, due to the smooth gravel stream bed. The river teems with small and medium sized fish and casts are rewarded with rises more often than not. There are plenty of big fish, not easy to take, to occupy the advanced angler who wants "problem fishing". Species of trout are Rainbow, Eastern Brook and Cutthroat. Although essentially a dry fly stream, small nymphs have taken many good fish in recent seasons.

It is sincerely hoped that this Guide will make your stay in or near West Yellowstone more enjoyable. If we can save you a wasted day or introduce you to a new stream we will feel well repaid. One thing we are sure of is that we know more about trout fishing than map-making, so our feelings will not be hurt in the least if you ask us to make clear to you anything that is written or drawn on this map. With a reasonable amount of effort you should catch some good trout every day of your stay in this section. If your luck continued bad, it may be your flies that are at fault. Perhaps we can help you. Somebody from our shop is out fishing everyday. Our information on conditions and what flies the fish are taking is not founded on guesswork or hearsay.

10. Cougar Creek. An ideal Eastern Brook Trout stream if there ever was one. Slow and deep. Banks are brushy in places. Worms are the safest bet here.

11. Duck Creek. From the highway down to Hebgen Lake the banks are very thickly grown with willows. It is not an easy stretch to fish, but pays well for the user of dry flies. Just inside the Park line is a vast meadow running back for miles to the east. Here is an unbeatable stretch of perfect dry fly water. Moderate depth and slow current. The trout are mostly Browns with Rainbows, Brooks and Grayling for variety.

12. The Grayling. Excellent dry-fly stream up to August 1st. Turn off highway to the right before reaching the place where the stream parallels the road. Leave car when creek is reached. Fish up as far as barns on left bank facing up-stream. Fish will be in pockets in the riffles. Dry-fliers best, hip boots sufficient.

The Grayling in the Park offers nice fishing at a point 15.5 miles from town. Moose trouble occurs here sometimes; cows with calves should be avoided.

13. About 7 miles inside the Park Gate, the road crosses the Madison. Upstream from the bridge is a stretch of very interesting dry-fly water. The fish lie along the bank which is cut under by the current and also in depressions in the bed of the river. Can be fished from the bank.

14. The Nine Mile Hole. A little less than nine miles inside the Park gate. Two very large boulders about 150 yards apart on the near bank mark this spot. The boulders resemble haystacks that have been eaten away near the ground. The run of deep water past the space between the boulders is nearly always good for at least one big rainbow. Large flies, fished wet. Waders or hip boots.

15. The Firehole. Neither too hard nor too easy, the Firehole is the ace dry-fly stream of this section. The fish are mostly Browns with a fair number of rainbows. The thick growth of weeds in the stream harbors countless insect larvae. There is a big hatch of flies of one sort or another every evening and rising fish can be found at all times. Fish over 3 pounds are no rarity. The water is warm but the fish are in no way weakened because of this fact. Some fine water lies right beside the main road where the canyon widens out above the falls. If you can get past this stretch without stopping to fish, you reach—

16. The Mouth of the Nez Perce. Turn off highway to right crossing the Nez Perce Creek on plank bridge seen from highway Park anywhere in the next quarter mile. This is a rather deep, slow-moving stretch of water, but feeding fish are most apt to be close to either bank or in the shallow glides. Very small dry flies are indicated here besides larger imitations of the various sedge flies that are nearly always in evidence. When rising fish are scarce, try nymphs. Waders needed, but good fishing can be had from the bank at times.

17. Biscuit Meadows. Park near sign-board on highway reading "Biscuit Basin" and walk to Firehole River about one hundred yards to the west. Not much fished in this stretch, the River holds many big fish in this portion.

18. Grebe Lake. The place to get Grayling. This lake is closed to fishing by the Park authorities until late in the season. Ask before planning to visit it. A hike of about 40 minutes from the gate beyond which cars are not allowed brings you out on the southeast corner of the lake, near

the Grayling Hatchery. Mark the spot where you emerged from the woods well, if you plan on staying till dark. Best fishing will be found around east end of lake near mouth of a small creek. Besides the very plentiful Grayling there are some fine rainbows to be had here. Grayling are a moody fish, but by staying till dusk, a good catch is reasonably certain. Rather small flies are preferred, fished wet. Gauze wing patterns are highly recommended and squirrel tail patterns in size 12 will be found effective.

19. Slough Creek. There are very large Cut-throat in the flat stretches to be reached by the road and trail indicated on the map.

20. After viewing the Grand Canyon of the Yellowstone time yourself to reach the part of the Yellowstone River above the falls anywhere from a mile upstream from the mouth of Alum Creek to a point 2 miles down from the outlet, at sundown. Every evening there is a big rise of Yellowstone Cut-throat, all running about a pound. Dry-flies size 14 or 16 to match the duns on the water will do the trick here. Watch out for white marl patches in the bed of the stream: they are very slippery. There is no handsomer variety of trout than these Cut-throat.

21. The Gibbon. Open water in the meadows. Plenty of good trout but by no means easy to catch. Recommended as a change from fishing in big waters. Dry-flies. Boots.

22. The Lower Madison. In the Gorge. Unlike the Upper Madison where the trout all run around two pounds, down here they come in all sizes. Your next fish may be six inches or six pounds. Most of them will be around 10 inches, and flies size 8 or 10 are most useful. The bed of the river is made up of round, smooth boulders, the current is swift, so unless you are experienced in swift water wading it is advisable to pass up the Madison below the Dam. Neither felt nor hob-nails hold well on the smooth rocks.

23. The Madison along here is not as swift and treacherous as in part nearer the dam, but it is still no place for a novice. To reach the back road on the other side of the river, cross on the plank bridge leading to Cliff Lake Post Office.

24. Cliff Lake. Lake Tahoe on a small scale for scenery. This is the best place we know, for a specimen Rainbow. Fish over five pounds are quite common. Boats, guide and outboard when required, may be had at Neely's Ranch at very reasonable rates. Early and late in season is best time for exceptionally large trout. Take warm clothing; sudden showers are frequent at this altitude but seldom last long. Medium sized Cut-throat occur in enough numbers to keep the fisherman interested if the big Rainbows happen to be sulking. Very large flies are needed and the best heavy leaders at your disposal. Neely's Ranch is outfitting point for pack trips to Hidden and Otter Lakes.

25. Red Rock Creek in Centennial Valley. 35 miles from town. Eastern Brook Trout and Grayling in good numbers. Not recommended after August 10. Red Rock Lakes are the home of the last surviving trumpeter Swans. A smaller stream than any listed above; hip boots are all the protection needed. Fish average about 10 inches.

26. The Gallatin. The River is of only moderate size where it first meets the highway but grows larger every mile it travels. After summer showers it is sometimes milky for a short time. Usually it is exceptionally clear, always cold and for the most part rather swift and shallow. Like the Lower

Madison it holds fish of every size but most of them are well-conditioned Rainbows of about three-fourths of a pound. Despite its fast current it is an excellent dry-fly stream. After August 1st flies made to imitate a grasshopper have been very effective.

27. Hidden Lake can be reached in an easy one day trip by way of Elk Lake. Fishermen are ferried across Elk Lake and driven to Hidden Lake. A reasonable charge covers transportation and boat hire on Hidden Lake. Flies similar to British Salmon flies work well here.

28. Henry's Lake. South of the West Entrance to the Park about 15 miles is Henry's Lake. An Idaho license is required. No spot in the U.S.A. offers bigger prizes to the fly fisherman. Shore fishing is good from sundown on into the night. Boats are available in several places, Rich's Valley View ranch being the most accessible. Brooks, Natives and Rainbows are the three species found in Henry's Lake. They will run 2½, 4 and 6 pounds respectively on the average. Use flies no smaller than 8s and the heaviest gut leaders. The fish are found close to drowned willows and have to be held away from brush.

The north fork of the Snake River rises at "Big Springs" shown at the lower edge of the map. It is a wide, slow moving stream down as far as the Island Park Reservoir, very clear and cold. High waders are needed but the wading is safe and easy, due to the smooth gravel stream bed. The river teems with small and medium sized fish and casts are rewarded with rises more often than not. There are plenty of big fish, not easy to take, to occupy the advanced angler who wants "problem fishing". Species of trout are Rainbow, Eastern Brook and Cutthroat. Although essentially a dry fly stream, small nymphs have taken many good fish in recent seasons.

It is sincerely hoped that this Guide will make your stay in or near West Yellowstone more enjoyable. If we can save you a wasted day or introduce you to a new stream we will feel well repaid. One thing we are sure of is that we know more about trout fishing than map-making, so our feelings will not be hurt in the least if you ask us to make clear to you anything that is written or drawn on this map. With a reasonable amount of effort you should catch some good trout every day of your stay in this section. If your luck continued bad it may be your flies that are at fault. Perhaps we can help you. Somebody from our shop is out fishing everyday. Our information on conditions and what flies the fish are taking is not founded on guesswork or hearsay.

# FISHING GUIDE

By DON MARTINEZ  
West Yellowstone, Mont.

There is no better trout fishing region in the United States than the section within a radius of 100 miles around West Yellowstone. Bigger fish may be taken during a brief period in the fall in certain Steelhead rivers emptying into the Pacific, and there are places where a greater number of fish may be caught at times, but considering the great variety of water, weather conditions, beauty of scenery, accessibility, large average size of fish, long season and safe wading this district is without a peer. There are hundreds of miles of large rivers running beside the highways, and other hundreds of miles of open water to be reached by side roads or trails. Practically all of this water is on public land, either National Park or National Forest, open to the public.

This map is only an outline of the available fishing. It will help you plan your time to advantage, however. Space does not permit a full description of each place. Where the map itself is obscure, or the text is not clear, please call on us in the store for fuller information. Conditions vary from time to time; a stretch of water that was barren in June may be excellent in August. It is our business to keep posted.

## GAME LAWS

To insure continued good fishing the authorities both in and out of the Park occasionally close certain waters to fishing. License requirements vary from year to year. To be on the safe side consult us first.

## SURPLUS FISH

We are always grateful for the loan of an exceptionally large trout for display purposes, but we deplore contests and competitions based on size or number of fish caught, regardless of method employed. Competition has no place in trout fishing. A large catch of average sized fish is interesting chiefly to the person that caught them. Well-meaning people sometimes offer us fish as a gift. We can not use them. Unless you intend to ship out a catch, please return surplus trout to the water. It is harder at first to put back a good fish than it is to catch it, but returning fish can be made a habit like anything else. Some of the best fishermen do not carry a net or a basket, releasing all their fish except an occasional very large specimen.

## SELECTION OF FLIES

Early and late in the season, trout are taken on very large and gaudy flies, either streamers or bucktail patterns. Our experience during the past seasons indicates that the use of these large flies in mid-season is a serious mistake. Instead of the bulky Jock Scots and squirrel tails used in the past, the more successful anglers now favor flies on hooks number 10 and 12 for the Madison River and in Hebgen Lake. The marked preference of the local fly fishermen for flies either dark in color or solid black should be heeded by strangers to these waters. The most effective wet flies in past seasons have been the wooly worm and rough bodied nymph flies. Either of these two were consistently deadly in a small size when fished on a light leader, IX being the most popular weight with some experts going to 3X,

which is perhaps too light for safety in wet fly fishing where the fish average better than two pounds. A careful dry fly man can get along with 3X, rarely popping off a fly, but will lose flies right along when fishing wet with leader finer than 1X. However, the greater number of strikes due to the use of light leaders compensates for the loss of an occasional fly.

Favorite dry fly patterns include the Adams, Grey Fox, Dunham, Special Ginger Quill and the Bi-visibilitys. During the month of June long hackled Variants on a 10 or 12 hook work well, due to the presence of the Brown Drake on the water, but later small flies do better. At times size 16s are a necessity.

Large "buggy" dry flies produce well when the Stone Fly hatches appear. These hatches occur at various times on the streams and lakes.

Flies tied to imitate the grasshopper have been very effective for big fish. The grasshopper type fly fished, as the occasion demands, wet or dry is a good bet on most streams in this area.

As the experienced fisherman knows without being told, the best dry flies are apt to be small in size and dull in color. The nearer they approach the natural insects in size and outline, the more likely they are to work. Here again pattern is less important than good floating qualities.

Commencing in 1938 we began collecting and classifying natural trout stream insects from both the Madison and the Snake River watersheds. It is our intention to continue collecting the insects on which the trout feed and to work out artificials with the cooperation of certain expert fishermen. Dry-fly men can make a more intelligent selection of flies after examining the actual insects than they can hope to do by acting on hunches, or taking the advice of some tackle dealer in a remote city. The writer is well equipped to tie flies in imitation of the natural insects of this section, having been a fly maker for 20 years. Where the pattern permits we use game-cock hackle exclusively, insuring durable, high-floating flies. By selling direct to the user we keep our prices at a level actually lower than the cost of ordinary hardware store flies.

N. B. Hebgen is an artificial lake created by the dam at its western end. The map shows the shore line at full highwater stage. When the water is at a lower level, certain bays will be dry ground with the streams flowing in their old channels. Choice fishing will always be had near where streams enter the lake but when a lower water level exists, the streams mouths will not be where they are shown on the map.

## Numbered Circles On the Map

1. Mouth of the South Fork. Go West on No. 191 about 7 miles, turn right, across road from schoolhouse, checking road by small creek, go north about 3 miles to shore of lake. Many large fish will be seen feeding in the evening in the slowly moving

water of the river channel. Wet flies best, boots or waders needed.

2. The South Fork. Turn right on Lake Shore road (marked with sign) 4.1 miles West of town on 191 as above, where straight stretch of highway ends. The stream may be reached by turning off on any of several side roads to the left, after driving two miles into the woods. Perfect Dry-fly water, Hip boots are sufficient.

## 3. The Peninsula —

Check speedometer as you turn off main highway onto Lake Shore Road. Go 4.1 miles and turn off Lake Shore Road to your left. Fish anywhere around this peninsula, particularly in the Bay. The channel runs south along the east side of the point, and can be reached by wading. The west side of the point may be fished from shore. Grayling are taken here at times.

4. Mouth of the Madison. 3.5 miles North of town, turn left at Lake Shore Road. Park anywhere about .5 miles after leaving highway. Fine run of slow-moving water for either nymphs or wet-flies. High waders needed here.

5. Cross Madison River and turn left 300 yards at top of grade. Park in grove of pine trees a half mile west of highway. River channel runs along this shore of the lake. Boots required here. Try dry flies or nymphs in swampy back-water pools scattered among the willows for Eastern Brook Trout if lake shore does not produce.

6. Angle right from highway on old gravel road 3.4 miles north of town coming out on Madison River near Thornton's Camp, at old wooden bridge, that can be seen upstream from present cement bridge on highway. Good stretch of dry-fly water on near side of little island in the river about 300 yards above old bridge. Fish close to either bank.

7. Turn right on dirt road at head of grade 300 yards after crossing bridge. About 1.8 miles after leaving highway the river's presence will be indicated below high bank. River may be reached from several parking places along here. All fine water thru this stretch. Wet flies best. Waders needed. Few fishermen work this water.

8. Turn right at Forest Service sign "Baker's Hole" 3 miles north of town on 191. Very good place late in the season. Also a good place for a voluntary swim.

9. Back of the Barns. Most over-fished and at the same time the most productive stretch of the Madison. Turn left one mile after entering Park. Road leads into a clearing with many buildings, the old stage-barns being the most prominent. The course of the river will be seen about a half mile distant. Two white trestles mark Hole No. 1, next one downstream is Hole No. 2 distinguished by big rock where road leads down to the water and No. 3 is the last pool working down stream. If all three pools are busy, continue down stream on dirt road running along the edge of the high ground about a mile, and try your luck. The water for some distance above and below the 3 "Holes" is shallow and lacking in hiding places which probably explains the presence of so many trout in the "Holes".

(Continued on Back Page)

(First draft)  
1/9/61

Bud Lilly's Fishing Guide

(Section concerning specific fishing spots)

Our custom-made copyrighted map here shows principal waters within a 50 mile radius of The Trout Shop. Numbered circles on the map correspond to descriptions below, and mark some of our favorite fishing spots. Scores of others exist. If any route isn't completely clear, come in to The Trout Shop and ask us --- we'll even tell you names of all the gopher holes along the way. In our brief words about these hot spots, we've only had space to hit the highlights. Come in and sit a spell, and we'll be happy to elaborate. Good fishing!

- R rainbow trout (*Salmo gairdneri*)
- B brown trout (*Salmo trutta*)
- C cutthroat trout (*Salmo clarkii clarkii*)
- YC Yellowstone cutthroat (*Salmo clarkii lewisii*)
- EB Eastern brook trout (*Salvelinus fontinalis*)
- L lake trout (*Cristivomer namaycush*)
- ST Shitepoke trout (*Salmo buddus lillyii*)
- G Montana grayling (*Thymallus signifer*)
- RW Rocky Mountain Whitefish (*Prospium williamsoni*)



1. HEBGEN LAKE: R/ B/ RW. METHODS: Trolling, bait, lures, flies. HOW & WHERE: Trollers may rent boats at spots shown on map. Local trolling favorites: pop gear, flatfish. Bait and lure fishermen: try shore casting anywhere along north shore, also Mormon Point, Rainbow Point, both old reliables. Worms, copper wobblers recommended. Fly fishermen: casting to rising fish with size 14-18 dry flies often brings in bragging-size browns and rainbows. In late summer, schools of big trout can often be seen surface feeding along Madison Arm, the Narrows, and elsewhere around lake --within fly casting distance of shore.

2. SOUTH FORK: R/ B/ EB/ RW. METHODS: This cold, gin-clear stream is a fly fisherman's dream, but worms fans do alright, too. Only 1st-class spin fishermen can toss hardware here, because of brush, succession of hairpin curves. HOW & WHERE: Entire length of stream usually heavily stocked with 6-10" rainbows in spring. Lower stretches often harbor huge browns, rainbows moving up from Hebgen Lake. Fine gravel bottom attracts spawners. Favorite wet flies: Muddler Minnow, Woolly Worms. Dry flies: Goofus, Adams, Renegade.

3. DUCK CREEK: R/ B/ RW. METHODS: Principally a fly stream, but deft lure lovers may score by fishing upstream on long casts, and generously donating lures to roots, snags. HOW & WHERE: Early season: fish stream west of Rt. 191. Hike downstream to juncture of Duck, Cougar creeks. Fish your way back. Lunker-class browns

find Duck ideal spawning grounds, may stay and set up housekeeping. Upstream fishing provides challenges, frustrations, occasional big fish.

4. COUGAR CREEK: EB/ R/ B/ RW. METHODS: Bait, flies. HOW & WHERE: This small stream isn't easy to fish, due to brush, snags, occasional moose, but provides fine sport, particularly to worm fishermen. About 6 miles north of The Trout Shop turn off Rt. 191 -- small winding dirt roads will show you the stream.

5. QUAKE LAKE: R/ B/ C/RW. METHODS: Bait, lures, flies. HOW & WHERE: The Madison River between Hebgen and Quake Lakes is an excellent feeding area. Fish Quake Lake itself where Beaver and other creeks enter, constantly pouring food into the lake. Exploring the lake shoreline often pays off. The lake was born August 17, 1959, when an earthquake toppled a mountain top into Madison Canyon, damming the river. Heavy equipment cut a channel thru the slide area, allowing the Madison to flow once again, but a lake remains for several miles above the slide (an attraction every visitor should see).

6. LOWER MADISON: R/ B/ C/ G/ RW. METHODS: One of the world's great fly streams. Bait, lures also effective. Rocks will take their toll of lures. HOW & WHERE: This fabled stream is a succession of hot fishing spots from Quake Lake to point where it enters Ennis Lake, 60 miles further downstream.

Try spots marked with (F) on map. Fast moving water, slippery rocks, tricky wading. Dry flies tied to float in fast rough water are terrific: see us for recommended patterns. Fish wet flies deep. Spin fishermen: try Daredevils, wobblers, Mepps type lures. A famous stream for many reasons -- annually produces 6" to 6# trout. The West Fork, a small tributary stream, is off-again, on-again, but offers fine fishing when it's on.

7. UPPER MADISON: R/ B/ C/ RW. METHODS: Fly fishing only legal here. HOW & WHERE: Near Thorton's Camp, downstream to Hebggen Lake, and upstream to the Park boundary above Baker's Hole usually produces well in early and late season. Try big streamers, large nymphs: brown trout up to 8 lbs. often taken in places mentioned. More hot spots further upstream: explore and experiment. Upper Madison is entirely different from rough, rugged lower Madison. River here moves slowly -- long flat glides, tricky eddies, easy wading, well-defined pools. Starting with May fly hatch in early June, dry fly men have a ball. Try to match the hatch, cast to slurping trout.

8. FIREHOLE RIVER: R/ C/ B. METHODS: Fly fishing only legal here. HOW & WHEN: Fish primarily with dry flies, nymphs. Best times: June, early July, September, October. Brown trout, up to 24", are the real challenge here. This famous stream makes champions out of duffers one day, duffers from champs the next. Read chapters 8, 9 of TROUT by Ray Bergman for more on this famous river.

9. GREBE LAKE: R/ G. METHODS: Primarily dry flies, but small spinning lures sometimes effective. Here's a fine chance for rare, beautiful Montana grayling. Leave your car, take easy 1 hour hike over well-marked trail to lake. Remember your conservation: grayling is a vanishing species. Easily identified by oversize, confetti-spotted dorsal fin.

10. YELLOWSTONE RIVER: YC. METHODS: Bait, lures, flies -- latter provide best results. HOW & WHERE: This is a trout fisherman's river in every sense. Try to be on hand for fine fly hatches, usually short but fairly frequent. When fish aren't rising, try the Yellowstone Woolly Worm wet fly. Area near Dragon's Mouth recommended.

11. YELLOWSTONE LAKE: YC. METHODS: Bait, lures, flies, trolling. HOW & WHERE: Famed Fishing Bridge needs no description. Spinning or fly casting from shore may reward you with rare Yellowstone cutthroat, averaging 14". Specimens up to 20" not uncommon. Trolling: rent a boat or bring your own (obtain free permit from Park ranger). Boats under 16 feet long must stay within  $\frac{1}{2}$  mile of shore -- storms (violent but usually brief) are common.

12. LEWIS LAKE: B/ L. METHODS: Trolling, bait, spinning, flies. HOW & WHERE: Bring your own boat. Fly fishermen will find the mouth of Moose River as it enters Lewis Lake good at times. Explore, experiment. Immense mackinaw sometimes taken here.

13. SHOSHONE LAKE: EB/ B/ L. METHODS: Same as Lewis.

HOW & WHERE: No boats available here, but may be reached by boat from Lewis Lake via Moose River, which links the 2 lakes. Trolling big spinners flatfish sometimes effective.

14. HIDDEN LAKE: Brilliant rainbows, averaging 2 lbs., only.

METHODS: Worms fished deep, dry flies when trout are surface feeding. HOW & WHERE: To reach this small, deep lake you must drive to Elk Lake Resort or Neely's Ranch. At Elk Lake Resort, you'll pay for boat, car transportation to Hidden. At Neely's, you'll rent horses, or hire boat transportation across Cliff Lake, hike 2 remaining miles. Best fishing on Hidden usually early a.m., and just before sundown.

15. WADE AND CLIFF LAKES: R/ B/ L. METHODS: Anything

goes -- often fine fly fishing. HOW & WHERE: Boats for rent on both of these nearby lakes. Monster trout in the 10 - 20 lb. class are taken from Wade often enough to make you nervous. Cliff Lake trout known as North American piranha. fishermen advised to wear bite-proof waders, carry heavy defense weapons.

16. HENRY'S LAKE: EB/ R/ C. METHODS: Trolling good from

open day till around July 1, after which heavy aquatic grass is a problem. Lures, bait good thruout season. Once they learn the house rules, wet fly fishermen will catch lunkers. Brook trout, 3 lbs. and bigger, are plentiful. Four to 15 lb. rainbow and

hybrid cutthroat caught regularly. Boats for rent at several spots around lakeshore.

17. GALLATIN RIVER: R/ B/ C/RW. METHODS: Fly fishing only to point where river leaves Yellowstone Park. Below Park: Bait, lures, flies. HOW & WHERE: Paralleling Rt. 191 for several miles within the Park, this is a small stream. Continuing north on 191, you'll have this handsome water within a stone's throw for 40 miles. Tributary streams add to its flow to form a clear, quick, moderate-size river. A great dry fly stream. Average size of rainbows: 8 - 14", occasional lunkers. Famous guest ranches, well-kept campgrounds down Gallatin canyon.

18. LITTLE FIREHOLE: R/ C/ B. METHODS: Fly fishing only legal. HOW & WHERE: During the warmest part of the summer, trout often migrate here seeking cooler water. Conditions are extremely difficult, challenging the most experienced angler. Light long leaders and a delicate touch indispensable.

19. GRAYLING CREEK: R/ B/ C/ G/ RW. METHODS: Bait, lures, flies. HOW & WHERE: Downstream from Hebgen Lake northshore road, the creek makes continuous bends with some deep pools. Early season spin and bait fishing suggested. Upstream from same road, stream borders colorful Parade Rest Guest ranch. Further north, Rt. 191 parallels stream -- sometimes good fly fishing here. Very few grayling, for which this stream was named, remain.

Bud Lilly's  
F I S H G U I D E

COPY BLOCK  
ONE:

Our custom-made map here shows principal fishing waters within a 50 mile radius of The Trout Shop. Fishnumbers on the map correspond to descriptions below, and mark some of our favorite fishing spots. Scores of others exist. If any route isn't completely clear, come in to The Trout Shop and ask us - we'll even tell you names of the gopher holes along the way. In our brief descriptions of these hot spots, we've only had space to hit the highlights. Come in and sit a spell and we'll be happy to elaborate. Good fishing!

COPY BLOCK  
TWO:

- R Rainbow trout (Salmo gairdneri)
- B Brown trout (Salmo trutta)
- C Cutthroat trout (Salmo clarkii clarkii)
- YC Yellowstone cutthroat (Salmo clarkii lewisii)
- EB Eastern Brook trout (Salvelinus fontinalis)
- L Lake trout (Cristivomer namaycush)
- G Montana grayling (Thymallus signifer)
- RW Rocky Mt. Whitefish (Prospium williamsoni)

(A) UPPER MADISON: R / B / C / RW. METHODS:  
Fly fishing only in Park. Below Park: anything  
goes. HOW & WHERE: From Park boundary down-  
stream to Hebgen Lake usually produces well  
early and late season. Try big streamers, large  
nymphs. More hot spots further upstream; ex-  
plore and experiment. Brown trout up to 8 lbs.  
often take here. Upper Madison is entirely  
different from rough, rugged lower Madison.  
River here moves slowly - long flat glides,  
tricky eddies, easy wading, well-defined pools.  
Starting with May Fly hatch in early June,  
dry fly men have a ball. Try to match the  
hatch, cast to slurping trout. Yellowstone  
Woolly Worm and bucktails a must for all wet  
fly addicts.

(B) FIREHOLE RIVER: R / C / B. METHODS:  
Fly fishing only legal here. HOW & WHEN: Fish  
primarily with dry flies, nymphs.



Best times: June, early July, September, October. Brown trout, up to 24", are real challenge here. This famous stream makes champions out of duffers one day, duffers from champs the next. Read chapters 8, 9 of TROUT by Ray Bergman for more on this great stream.

(C) GIBBON RIVER: R / C / B. METHODS: Fly fishing only below Gibbon Falls. Above Falls: anything. HOW & WHERE: Fine fish water from Madison Junction upstream to where river parallels highway. Some large browns under cut banks. Trout here are smart, water clear, small flies good.

(D) GREBE LAKE: R / G. METHODS: Primarily dry flies, but small spinning lures sometimes effective. Here's a fine chance for rare, beautiful Montana grayling. Leave your car, take easy 1 hour hike over well-marked trail to lake. Remember your conservation: grayling is a vanishing species. Easily identified by oversize, confetti-spotted dorsal fin.

(E) YELLOWSTONE RIVER: YC. METHODS: Bait, lures, flies - latter provide best results.

HOW & WHERE: This is a trout fisherman's river in every sense. Try to be on hand for copious fly hatches, usually short but fairly frequent. When fish aren't rising, try Yellowstone Woolly Worm wet fly. Area near Dragon's Mouth recommended.

(F) YELLOWSTONE LAKE: YC. METHODS: Bait, lures, flies, trolling. HOW & WHERE: Famed Fishing Bridge needs no description. Spinning or fly casting from shore may reward you with rare Yellowstone cutthroat, averaging 14". Specimens up to 20" not uncommon. Trolling: rent a boat or bring your own (obtain free permit from Park ranger). Boats under 16' long must stay within  $\frac{1}{2}$  mile of shore - storms, violent but usually brief, are common.

(H) COUGAR CREEK: EB / R / B / RW. METHODS: Bait, flies. HOW & WHERE: This small stream isn't easy to fish, due to brush, snags and occasional moose, but provides fine sport, particularly to worm fishermen. About 6 mi. north of The Trout Shop, turn off Rt. 191. Small winding dirt roads will show you the stream.

(J) DUCK CREEK: R / B / RW. METHODS: Primarily a fly stream, but deft lure lovers may score by fishing upstream on long casts, generously donating lures to roots, snags.

HOW & WHERE: Early season: fish stream west of Rt. 191. Hike downstream to juncture of Duck, Cougar Creeks. Fish your way back. Lunker-class browns find Duck ideal spawning grounds, may stay and set up housekeeping. Upstream fishing provides challenges, frustrations, occasional big fish.

(K) GRAYLING CREEK: R / C / G / RW. METHODS: Bait, lures, flies. HOW & WHERE: Downstream from Hebgen Lake northshore road the creek makes continuous bends with some deep pools. Early season spin and bait fishing suggested. Upstream from same road, stream borders colorful Parade Rest guest ranch. Further north, Rt. 191 parallels stream, sometimes good fly fishing here. Very few grayling, for which this stream was named, remain.

(L) GALLATIN RIVER: R / B / C / RW. METHODS: Bait, lures, flies. HOW & WHERE: Paralleling Rt. 191 for several miles within the Park, this is a small stream.

Continuing north on 191, you'll have this handsome water within a stone's throw for 40 miles. Tributary streams add to its flow to form a clear, quick, moderate-sized river. A great dry fly stream. Average size of rainbows: 8 - 14", occasional lunkers. Famous guest ranches, well-kept campgrounds down Gallatin canyon.

(M) HEBGEN LAKE: R / B / RW. METHODS: Trolling, bait, lures, flies. HOW & WHERE: Trollers may rent boats at spots shown on map. Local trolling favorites: pop gear, flat-fish. Bait and lure fishermen: try shore casting anywhere along northshore, also Mormon Point, Rainbow Point, both old reliables. Fly fishermen: casting to rising fish with size 14 - 18 dry flies often brings in bragging-size browns and rainbows. In late summer, schools of trout can often be seen surface feeding along Madison Arm, the Narrows, and elsewhere within fly casting distance of shore.

(N) SOUTH FORK: R / B / EB / RW. METHODS:

This cold, gin-clear stream is a fly fisherman's dream, but worm fans do alright, too. Only 1st-class spin fishermen can toss hardware here, because of brush, succession of hairpin curves.

HOW & WHERE: Entire length of stream usually heavily stocked with 6 - 10" rainbows in spring. Lower stretches often harbor huge browns and rainbows, moving up from Hebgen Lake.

Fine gravel bottom attracts spawners. Favorite wet flies: Muddler Minnow, Woolly Worms.

Dry flies: Coofus, Adams, Renegade.

(O) LOWER MADISON: R / B / C / G / RW.

METHODS: One of the world's great fly streams.

Bait, lures also effective. Rocks will take their toll of lures. HOW & WHERE: This fabled stream is a succession of hot fishing spots from Quake Lake to Ennis Lake, 60 miles further downstream. Fast moving water, slippery rocks, tricky wading. Dry flies tied to float in fast, rough water are terrific: see us for recommended patterns. Fish wet flies deep.

Spin fishermen: try Daredevils, wobblers, Mepps-type lures. A famous stream for many reasons. Annually produces 6" to 6 $\frac{1}{2}$ " trout. The West Fork, a small tributary, is off-again, on-again, but offers fine fishing when it's on.

(P) CLIFF AND WADE LAKES: R / B / L.

METHODS: Anything goes - often fine fly fishing. HOW & WHERE: Boats for rent on both of these nearby lakes. Monster trout in the 10-20 lb. class are taken from Wade often enough to make you nervous. Cliff Lake trout known as North American piranha. Fishermen advised to wear bite-proof waders, carry heavy defense weapons.

(R) HIDDEN LAKE: Brilliant rainbows, averaging 2 lbs., only. METHODS: Worms fished deep, dry flies when trout are surface feeding. HOW & WHERE: To reach this small, deep lake you must drive to Elk Lake Resort or Neely's Ranch.

At Elk Lake Resort, you'll pay for boat, car transportation to Hidden. At Neely's, you'll rent horses, or hire boat transportation across Cliff Lake, hike 2 remaining miles. Best fishing on Hidden usually early a.m. and just before sundown.

(S) ELK LAKE: R / C / L / G. METHODS: Trolling, also shore fishing with lures, bait, flies. Very deep in spots, reputed to harbor sea-monster-size mackinaw trout.

(T) HENRY'S LAKE: EB / R / C. METHODS: Trolling good from opening day until around July 1, after which heavy aquatic grass is a problem. Lures, bait good thruout season. Once they learn the house rules, wet fly fishermen will catch lunkers. Brook trout, 3 lbs. and up, are plentiful. 4 to 15 lb. rainbow and hybrid cutthroat caught regularly.

(U) QUAKE LAKE: R / B / C / RW. METHODS: Bait, lures, flies. HOW & WHERE: The Madison River between Hebgen Dam and Quake Lake is often excellent fishing - trout feed here.



Fish Quake Lake itself where Beaver and other creeks enter, constantly pouring food into the lake. Exploring the shoreline often pays off. The lake was born August 17, 1959, when an earthquake toppled a mountain top into Madison Canyon, damming the river. Heavy equipment cut a channel thru the slide area, allowing the Madison to flow once again, but the lake remains for several miles above the slide (an attraction every visitor should see).

COPY FOR ADVERTISING PORTION

BUD LILLY FISHGUIDE

SMALL TYPE: Headquarters for fishermen & other characters

BIG TYPE: THE TROUT SHOP

DISPLAY TYPE: West Yellowstone, Montana

P.O. Box 587

Phone 000-0000

COMPLETE FISHING TACKLE

Camping Gear

Unlimited Free Advice

I freeze and ship fish & game anywhere in the U.S.A.

Wet, Dry & Moist Ice for sale Guide Service

Flies tied to order

Mail orders Filled

VERY SMALL TYPE:

(Send \$5 for sampler assortment special trout flies custom hand-tied especially for waters nearby. Specify dry, wet or mixed.)

SCRIPT:

Bud Lilly, prop.

BODY COPY:

For years now, writers in FIELD & STREAM, OUTDOOR LIFE and SPORTS AFIELD have been bragging so loud about the terrific fishing hereabouts, it's sort of inspired the fish, given them something to live up to. And around this neck of the woods, The Trout Shop is generally recognized as offishal fishing headquarters - so much so that FISH KNOW if you've been here

BODY COPY  
CONTINUED:

first, and if you haven't they're likely to  
fin their noses at you.

So first thing to do when you arrive in  
West Yellowstone is visit The Trout Shop.  
Get your license, get free current fishing  
regulations, swap lies, etc. NOTE: I will  
listen to all your fish stories with a  
straight face. No other tackle shop can make  
this claim. I promise not to pressure you  
into buying a single doggone thing. You're  
welcome if all you want is free directions,  
advice, or to escape from a charging moose.  
(No moose can charge in The Trout Shop, and  
neither can you. Cash only.)

BUT if you want something, need something -  
I've got it. Everything from rods, reels  
and waders to flies and lures with built-in  
sex appeal for trout hereabouts.

WARNING: Fishermen find that flies, lures  
and gear that never miss in California, Texas  
and other foreign lands often aren't worth a  
¢ here.

BODY COPY  
CONTINUED:

Fish giggle & sneer at 'em. Our big voting-age fish just don't get that way without picking up a liberal education en route. Local lunkers retch at gunk that innocent itty bitty trout gobble. This makes sense: would you come out from behind a rock for a bowl of baby food? So if you haven't got a complete outfit, your best bet is to HOLD EVERYTHING, WAIT until you get to The Trout Shop, let me fix you up with flies, leaders, stuff made especially for this area that you'll need to bring back the big ones.

If you're interested in guide service, I'm available. I can personally escort you to some unusual fishing adventures not covered on my fishmap - but write or phone well in advance. Good luck and good fishing!

SCRIPT:

Bud Lilly

WEST YELLOWSTONE  
MONTANA



Bud Lilly , PROP.

(NONE GENUINE WITHOUT  
THIS SIGNATURE)

*Crop this  
way -  
just the logo*

(Continued  
from overleaf)

## The Trout Shop's OfFISHal FISHGUIDE

**YELLOWSTONE LAKE:** YC. METHODS: Bait, lures, flies, trolling. HOW & WHERE: Famed Fishing Bridge needs no description. Spinning or fly casting from shore may reward you with rare Yellowstone cutthroat, averaging 14". Specimens up to 20" not uncommon. Trolling: rent a boat or bring your own (obtain free permit from Park ranger). Boats under 16' long must stay within 1/4 mile of shore — storms, violent but usually brief, are common.

**YELLOWSTONE RIVER:** YC. METHODS: Bait, lures, flies — latter provide best results. HOW & WHERE: This is a trout fisherman's river in every sense. Try to be on hand for copious fly hatches, usually short but fairly frequent. When fish aren't rising, try Yellowstone Woolly Worm wet fly. Area near Dragon's Mouth recommended.

**SHOSHONE LAKE:** EB / B / L. METHODS: Trolling, bait, spinning, flies. HOW & WHERE: You can hike to Shoshone Lake, or reach it easier by launching your own boat in Lewis Lake (2 1/2 mi. south, not shown on map), then boating up Moose River, which links the 2 lakes. Trolling big spinners and flatfish sometimes effective in Shoshone. Fly fishermen: the mouth of Moose River as it enters Lewis Lake is often good. Immense mackinaw sometimes taken from Lewis. Explore, experiment on both lakes.

**COUGAR CREEK:** EB / R / B / RW. METHODS: Bait, flies. HOW & WHERE: This small stream isn't easy to fish, due to brush, snags and occasional moose, but provides fine sport, particularly to worm fishermen. About 6 mi. north of The Trout Shop, turn off Rt. 191. Small winding dirt roads will show you the stream.

**DUCK CREEK:** R / B / RW. METHODS: Primarily a fly stream, but deft lure lovers may score by fishing upstream on long casts, generously donating lures to roots, snags. HOW & WHERE: Early season: fish stream west of Rt. 191. Hike downstream to juncture of Duck, Cougar Creeks. Fish your way back. Lunger-class browns find Duck ideal spawning grounds, may stay and set up housekeeping. Upstream fishing provides challenges, frustrations, occasional big fish.

**GRAYLING CREEK:** R / C / G / RW. METHODS: Bait, lures, flies. HOW & WHERE: Downstream from Hebgen Lake northshore road the creek makes continuous bends with some deep pools. Early season spin and bait fishing suggested. Upstream from same road, stream borders colorful Parade Rest guest ranch. Further north, Rt. 191 parallels stream, sometimes good fly fishing here. Very few grayling, for which this stream was named, remain.

**GALLATIN RIVER:** R / B / C / RW. METHODS: Bait, lures, flies. HOW & WHERE: Paralleling Rt. 191 for several miles within the Park, this is a small stream. Continuing north on 191, you'll have this handsome water within a stone's throw for 40 miles. Tributary streams add to its flow to form a clear, quick, moderate-sized river. A great dry fly stream. Average size of rainbows: 8 - 14", occasional lunkers. Famous guest ranches, well-kept campgrounds down Gallatin canyon.

**HEBGEN LAKE:** R / B / RW. METHODS: Trolling, bait, lures, flies. HOW & WHERE: Trollers may rent boats at spots shown on map. Local trolling favorites: pop gear, flatfish. Bait and lure fishermen: try shore casting anywhere along northshore, also Mormon Point, Rainbow Point, both old reliables. Fly fishermen: casting to rising fish with size 14 - 18 dry flies often brings in bragging-size browns and rainbows. In late summer, schools of trout can often be seen surface feeding along Madison Arm, the Narrows, and elsewhere within fly casting distance off shore.

**SOUTH FORK:** R / B / EB / RW. METHODS: This cold, gin-clear stream is a fly fisherman's dream, but worm fans do alright, too. Only 1st-class spin fishermen can toss hardware here, because of brush, succession of hairpin curves. HOW & WHERE: Entire length of stream usually heavily stocked with 6 - 10" rainbows in spring. Lower stretches often harbor huge browns and rainbows, moving up from Hebgen Lake. Fine gravel bottom attracts spawners. Favorite wet flies: Muddler Minnow, Woolly Worms. Dry flies: Goofus, Adams, Renegade.

**LOWER MADISON:** R / B / C / G / RW. METHODS: One of the world's great fly streams. Bait, lures also effective. Rocks will take their toll of lures. HOW & WHERE: This fabled stream is a succession of hot fishing spots from Quake Lake to Ennis Lake, 60 miles further downstream. Fast moving water, slippery rocks, tricky wading. Dry flies tied to float in fast, rough water are terrific: see us for recommended patterns. Fish wet flies deep. Spin fishermen: try Daredevils, wobblers, Mepps-type lures. A famous stream for many reasons. Annually produces 6" to 6# trout. The West Fork, a small tributary, is off-again, on-again, but offers fine fishing when it's on.

**CLIFF AND WADE LAKES:** R / B / L. METHODS: Worms, lures — often fine fly fishing. HOW & WHERE: Boats for rent on both of these nearby lakes. Monster trout in the 10-20 lb. class are taken from Wade often enough to make you nervous. Cliff Lake trout known as North American piranha. Fishermen advised to wear bite-proof waders, carry heavy defense weapons.

**HIDDEN LAKE:** Brilliant rainbows only, averaging 2 lbs. METHODS: Worms fished deep, dry flies when trout are surface feeding. HOW & WHERE: To reach this small, deep lake you must drive to Elk Lake Resort or Neely's Ranch. At Elk Lake Resort, you'll pay for boat, car transportation to Hidden. At Neely's, you'll rent horses, or hire boat transportation across Cliff Lake, hike 2 remaining miles. Best fishing on Hidden usually early a.m. and just before sundown.

**ELK LAKE:** R / C / L / G. METHODS: Trolling, also shore fishing with lures, bait, flies. Very deep in spots, reputed to harbor sea-monster-size mackinaw trout.

**HENRY'S LAKE:** EB / R / C. METHODS: Trolling good from opening day until around July 1, after which heavy aquatic grass is a problem. Lures, bait good thruout season. Once they learn the house rules, wet fly fishermen will catch lunkers. Brook trout, 3 lbs. and up, are plentiful. 4 to 15 lb. rainbow and hybrid cutthroat caught regularly.

**QUAKE LAKE:** R / B / C / RW. METHODS: Bait, lures, flies. HOW & WHERE: The Madison River between Hebgen Dam and Quake Lake is often excellent fishing — trout feed here. Fish Quake Lake itself where Beaver and other creeks enter, constantly pouring food into the lake. Exploring the shoreline often pays off. The lake was born August 17, 1959, when an earthquake toppled a mountain top into Madison Canyon, damming the river. Heavy equipment cut a channel thru the slide area, allowing the Madison to flow once again, but the lake remains for several miles above the slide (an attraction every visitor should see).

41

HEADQUARTERS FOR FISHERMEN & OTHER CHARACTERS

## Bud Lilly's TROUT SHOP

West Yellowstone, Montana  
P. O. Box 587 Phone JU 6-7293

COMPLETE FISHING TACKLE  
WORMS SOLD & LEASED • FLIES TIED TO ORDER  
GIANT CARNIVEROUS AFRICAN NIGHTCRAWLERS  
DRY ICE • GUIDE SERVICE • MAIL ORDERS FILLED

I freeze and ship fish and game anywhere in the U.S.

(Send \$5 for sampler assortment of finest trout flies, custom hand-tied especially for nearby waters. Specify dry, wet or mixed.)

For years now, writers in FIELD & STREAM, OUTDOOR LIFE and SPORTS AFIELD have been bragging so loud about the terrific fishing hereabouts, it's sort of inspired the fish, given them something to live up to. And around this neck of the woods, The Trout Shop is generally recognized as offishal fishing headquarters. In fact, FISH KNOW if you've been here first, and if you haven't they're likely to fin their noses at you.

So first thing to do when you arrive in West Yellowstone is visit *The Trout Shop*. Get your license (no license required in Park), get free current fishing regulations, swap lies, etc. NOTE: I will listen to all your fish stories with a straight face. *No other tackle shop can make this claim.* I promise not to pressure you into buying a single doggone thing. You're welcome if all you want is free directions, advice, or to escape from a charging moose. (No moose can charge in the Trout Shop, and neither can you. Cash only.)

BUT if you want something, need something — I've got it. Everything from rods, reels and waders to flies and lures with built-in sex appeal for trout hereabouts.

WARNING: Fishermen find that flies, lures and gear that never miss in California, Texas and other foreign lands often aren't worth a ¢ here.

Fish giggle & sneer at 'em. Our big voting-age fish just don't get that way without picking up a liberal education en route. Local lunkers retch at gunk that innocent itty bitty trout gobble. This makes sense: would you come out from behind a rock for a bowl of baby food? So if you haven't got a complete outfit, your best bet is to HOLD EVERYTHING, WAIT until you get to The Trout Shop, let me fix you up with flies, leaders, stuff made especially for this area that you'll need to bring back the big ones.

If you're interested in guide service, I'm available. I can personally escort you to some unusual fishing adventures not covered on my fishmap — but write or phone well in advance. Good luck and good fishing!

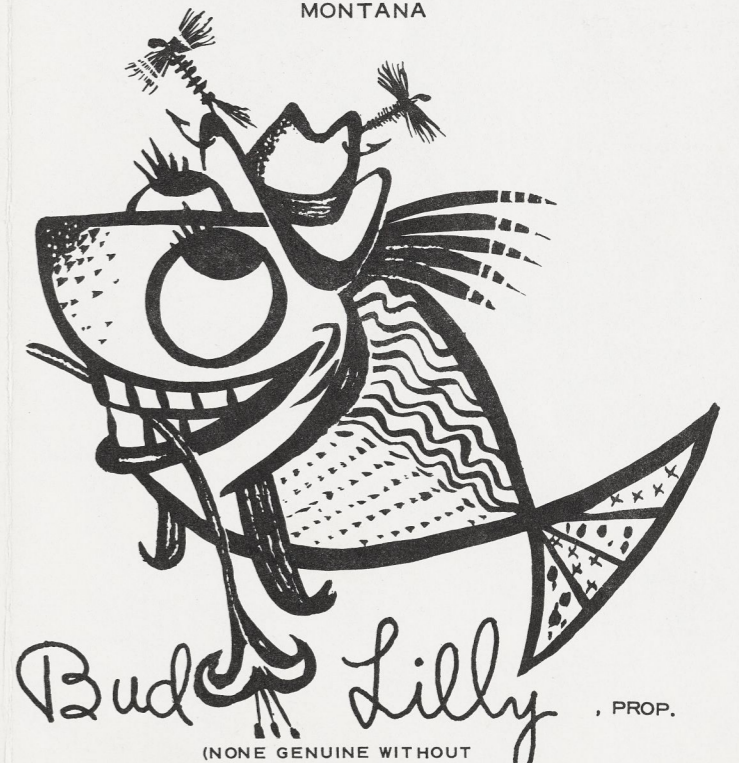


## THE COMPLEAT FISHGUIDE

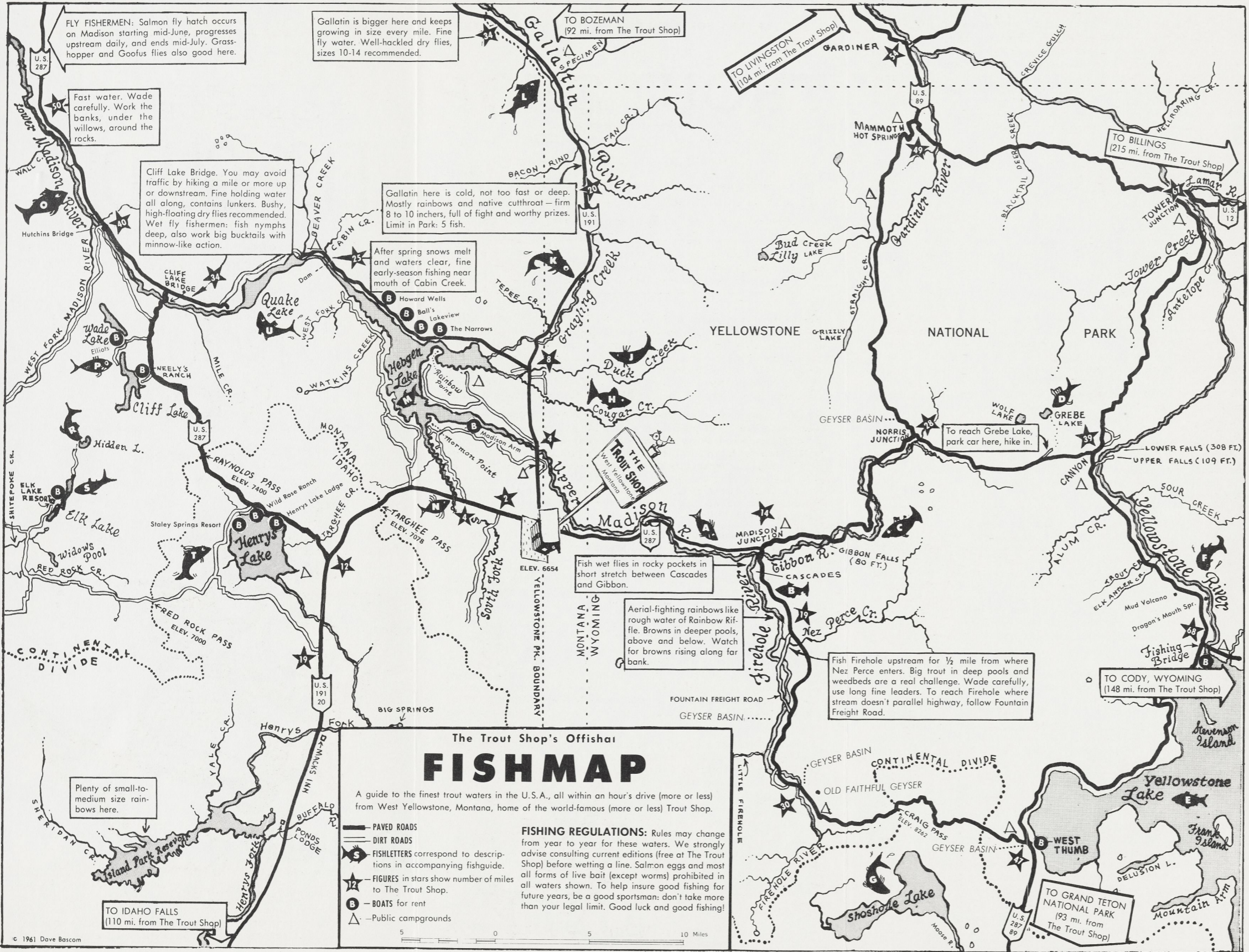
PREPARED BY AND FOR AND  
ISSUED EXCLUSIVELY BY

Bud Lilly's  
TROUT  
SHOP

WEST YELLOWSTONE  
MONTANA



Bud Lilly, PROP.  
(NONE GENUINE WITHOUT  
THIS SIGNATURE)



# The TROUT SHOP'S compleat FISHGUIDE



Bud Lilly, PROP.

Our custom-made Fishmap shows principal waters within a 50 mile radius of The Trout Shop. Fishletters on the map correspond to descriptions below, and mark some of our favorite fishing spots. Scores of others exist. If any route isn't completely clear, come in to The Trout Shop and ask us- we'll even tell you names of all the gopher holes along the way. In our brief words below, we're hitting only the highlights. Come in and sit a spell and we'll be happy to elaborate. Good fishing!

- R Rainbow trout (*Salmo gairdneri*)
- B Brown trout (*Salmo trutta*)
- C Cutthroat trout (*Salmo clarkii clarkii*)
- YC Yellowstone cutthroat (*Salmo clarkii lewisii*)
- EB Eastern Brook trout (*Salvelinus fontinalis*)
- L Lake trout (*Cristivomer namaycush*)
- G Montana grayling (*Thymallus signifer*)
- RW Rocky Mt. Whitefish (*Prospium williamsoni*)

**A UPPER MADISON:** R / B / C / RW. METHODS: Fly fishing only in Park. Below Park: anything goes except eggs, minnows. HOW & WHERE: From Park boundary downstream to Hebgen Lake usually produces well early and late season. Try big streamers, large nymphs. More hot spots further upstream: explore and experiment. Brown trout up to 8 lbs. often take here. Upper Madison is entirely different from rough, rugged lower Madison. River here moves slowly - long flat glides, tricky eddies, easy wading, well-defined pools. Starting with May Fly hatch in early June, dry fly men have a ball. Try to match the hatch, cast to slurping trout. Yellowstone Worm and bucktails a must for all wet fly addicts.

**B FIREHOLE RIVER:** R / C / B. METHODS: Fly fishing only legal here. HOW & WHEN: Fish primarily with dry flies, nymphs. Best times: June, early July, September, October. Brown trout, up to 24", are real challenge here. This famous stream makes champions out of duffers one day, duffers from champs the next. Read chapters 8, 9 of TROUT by Ray Bergman for more on this great stream.

**C GIBBON RIVER:** R / C / B. METHODS: Fly fishing only below Gibbon Falls. Above Falls: anything. HOW & WHERE: Fine fish water from Madison Junction upstream to where river parallels highway. Some large browns under cut banks. Trout here are smart, water clear, small flies good.

**D GREBE LAKE:** R / G. METHODS: Primarily dry flies, but small spinning lures sometimes effective. Here's a fine chance for rare, beautiful Montana grayling. Leave your car, take easy 1 hour hike over well-marked trail to lake. Remember your conservation: grayling is a vanishing species. Easily identified by oversize, confetti-spotted dorsal fin.

**FLY FISHERMEN:** Salmon fly hatch occurs on Madison starting mid-June, progresses upstream daily, and ends mid-July. Grass-hopper and Goofus flies also good here.

Gallatin is bigger here and keeps growing in size every mile. Fine fly water. Well-hatched dry flies, sizes 10-14 recommended.

Fast water. Wade carefully. Work the banks, under the willows, around the rocks.

Cliff Lake Bridge. You may avoid traffic by hiking a mile or more up or downstream. Fine holding water all along, contains lunkers. Bushy, high-floating dry flies recommended. Wet fly fishermen: fish nymphs deep, also work big bucktails with minnow-like action.

Gallatin here is cold, not too fast or deep. Mostly rainbows and native cutthroat - firm 8 to 10 inches, full of fight and worthy prizes. Limit in Park: 5 fish.

After spring snows melt and waters clear, fine early-season fishing near mouth of Cabin Creek.

Fish wet flies in rocky pockets in short stretch between Cascades and Gibbon.

Aerial-fighting rainbows like rough water of Rainbow Riffle. Browns in deeper pools, above and below. Watch for browns rising along far bank.

Fish Firehole upstream for 1/2 mile from where Nez Perce enters. Big trout in deep pools and weedbeds are a real challenge. Wade carefully, use long line leaders. To reach Firehole where stream doesn't parallel highway, follow Fountain Freight Road.

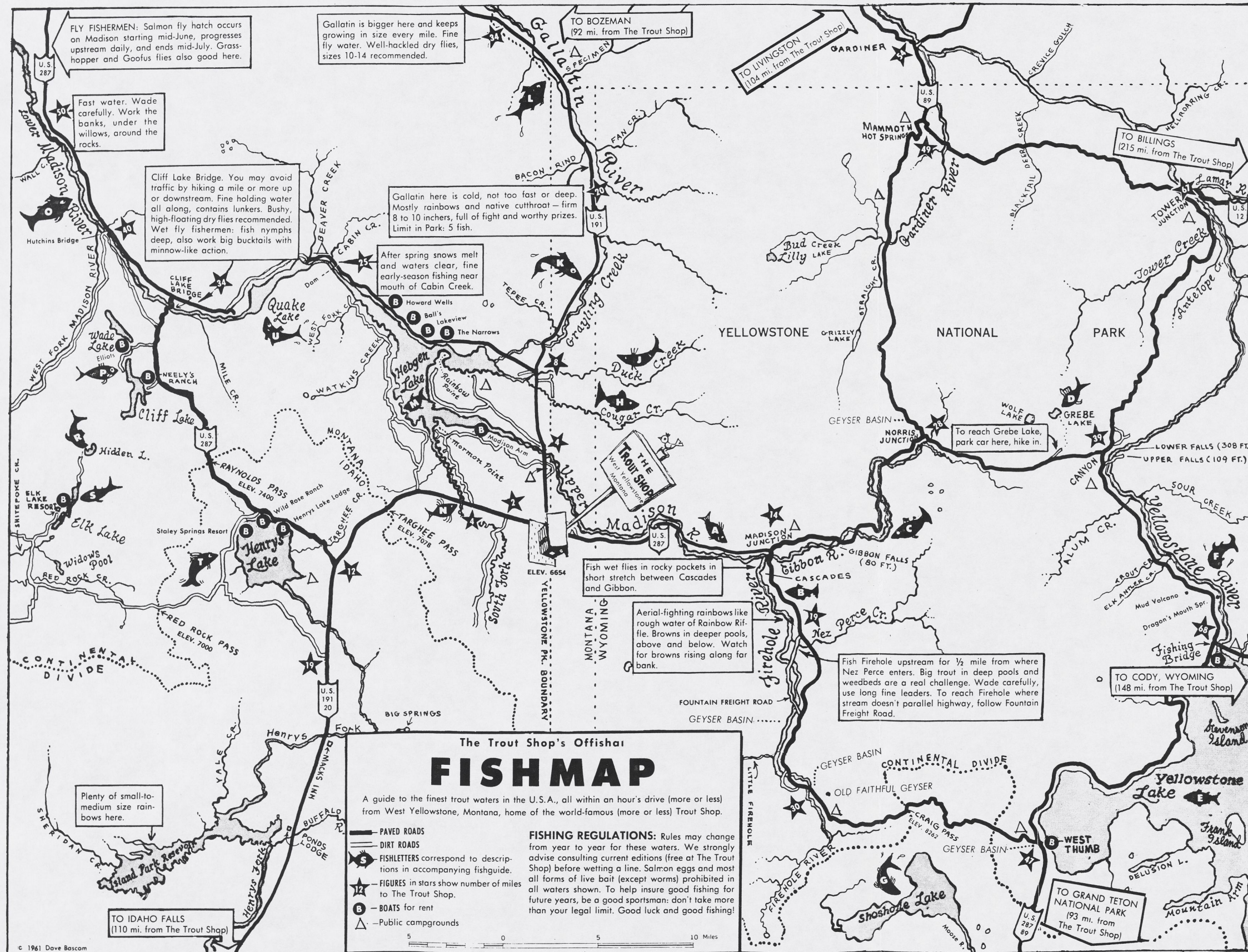
**The Trout Shop's Offshoot**

## FISHMAP

A guide to the finest trout waters in the U.S.A., all within an hour's drive (more or less) from West Yellowstone, Montana, home of the world-famous (more or less) Trout Shop.

- PAVED ROADS
- DIRT ROADS
- FISHLETTERS correspond to descriptions in accompanying fishguide.
- FIGURES in stars show number of miles to The Trout Shop.
- BOATS for rent
- Public campgrounds

**FISHING REGULATIONS:** Rules may change from year to year for these waters. We strongly advise consulting current editions (free at The Trout Shop) before wetting a line. Salmon eggs and most all forms of live bait (except worms) prohibited in all waters shown. To help insure good fishing for future years, be a good sportsman: don't take more than your legal limit. Good luck and good fishing!



# The TROUT SHOP'S complete FISHGUIDE



Bud & Lilly, PROP.

Our custom-made Fishmap shows principal waters within a 50 mile radius of The Trout Shop. Fishletters on the map correspond to descriptions below, and mark some of our favorite fishing spots. Scores of others exist. If any route isn't completely clear, come in to The Trout Shop and ask us- we'll even tell you names of all the gopher holes along the way. In our brief words below, we're hitting only the highlights. Come in and sit a spell and we'll be happy to elaborate. Good fishing!

- R Rainbow trout (*Salmo gairdneri*)
- B Brown trout (*Salmo trutta*)
- C Cutthroat trout (*Salmo clarkii clarkii*)
- YC Yellowstone cutthroat (*Salmo clarkii lewisii*)
- EB Eastern Brook trout (*Salvelinus fontinalis*)
- L Lake trout (*Cristivomer namaycush*)
- G Montana grayling (*Thymallus signifer*)
- RW Rocky Mt. Whitefish (*Prosopium williamsoni*)

**A UPPER MADISON:** R / B / C / RW. METHODS: Fly fishing only in Park. Below Park: anything goes except eggs, minnows. HOW & WHERE: From Park boundary downstream to Hebgen Lake usually produces well early and late season. Try big streamers, large nymphs. More hot spots further upstream: explore and experiment. Brown trout up to 8 lbs. often take here. Upper Madison is entirely different from rough, rugged lower Madison. River here moves slowly - long flat glides, tricky eddies, easy wading, well-defined pools. Starting with May Fly hatch in early June, dry fly men have a ball. Try to match the hatch, cast to slurping trout. Yellowstone Woolly Worm and bucktails a must for all wet fly addicts.

**B FIREHOLE RIVER:** R / C / B. METHODS: Fly fishing only legal here. HOW & WHEN: Fish primarily with dry flies, nymphs. Best times: June, early July, September, October. Brown trout, up to 24", are real challenge here. This famous stream makes champions out of duffers one day, duffers from champs the next. Read chapters 8, 9 of TROUT by Ray Bergman for more on this great stream.

**C GIBBON RIVER:** R / C / B. METHODS: Fly fishing only below Gibbon Falls. Above Falls: anything. HOW & WHERE: Fine fish water from Madison Junction upstream to where river parallels highway. Some large browns under cut banks. Trout here are smart, water clear, small flies good.

**D GREBE LAKE:** R / G. METHODS: Primarily dry flies, but small spinning lures sometimes effective. Here's a fine chance for rare, beautiful Montana grayling. Leave your car, take easy 1 hour hike over well-marked trail to lake. Remember your conservation: grayling is a vanishing species. Easily identified by oversize, confetti-spotted dorsal fin.