

Volume 2 Newsletter March
Number 4 1984

WINTER SNOWPACK

Snow surveys just released place most western river drainages in normal condition with expected run-off less than 1983. Late season moisture last year caused many rivers to be high.

Late season high water makes fishing difficult on rivers with Salmon Fly hatches in June and July, namely the Big Hole, Madison and Yellowstone. These rivers promise to be in better shape this year. Improvement continues on these particular rivers with the special regulations in effect.

This season the Yellowstone river south of Livingston is included in special regulation management. A section of the river will be lure and fly fishing only with a keep limit of one trout over 18" and 2 trout under 12". Cutthroat must all ~~be~~ released.

SPRING FISHING in the area of Helena, MT.

(A)

over

Doug O'Looney operates a tackle shop and guide service that is located in the capital city of Montana, Helena. Doug provided the information on these streams. They have so far received little national attention.

~~The Big Horn~~
THE BIG HORN RIVER

(B)

George Anderson has a tackle shop and guide service in Livingston, MT. In addition to knowing all of the waters in that area, he has been a leader in learning where and how to fish the Big Horn. He has created several effective fly patterns for the large trout in this river.

THE UPPER MISSOURI DRAINAGE

I have enclosed a brochure in this mailing from THE RIVERS EDGE located at Bozeman, MT. I felt that providing information in this issue of our newsletter on the Helena area, Bozeman, and the Big Horn ~~area~~ might ^{help you} find some interesting fishing out of the areas that are being detailed by outdoor writers.

THE YELLOWSTONE AREA and BOOKS

Next Page —

You will find a flier on a new book to be available in April, with photos by Dan Callaghan and text by Charles Brooks on the major streams in the Yellowstone Park area. I have not seen any of the prepublished materials, but I can assure you the photography will be superb and a great collection for anyone that loves the area as I do.

Also available sometime this summer will be a book titled "A Guide to Fishing Montana". I understand ~~to include~~ ^{that} some information on fishing in Yellowstone Park ~~also~~ ^{will be included in this book} ~~this book~~ I was assured ^{that it is} would not give detailed instructions on exact fishing spots, but ^{rather} acquaint the angler with the character of the stream, the best time of the season and the best times during the day. This allows the angler the opportunity to learn about favorite spots on his own, and protects against congregating fisherman on all the so called "hot spots".

These books should be in your

favorite specialty shop priced in soft cover at \$12.95 and \$8.95 respectively.

The "Anglers Guide to Montana" is written ~~with contributions from~~ ^{with} information gathered from a number of dedicated anglers intimately acquainted with the waters discussed. Again I have not read the text as yet.

FLY FISHING TIP

When I started fly fishing about 1937-8, it didn't require much skill to consistently catch trout and of course lots of whitefish. As years have gone by the trout have learned alot. I can't say that for the whitefish. Fisherman have learned alot too, but we also forget old methods as we get involved in "matching the hatch." When there are alot of trout competing for food in fast, rocky pocket water streams, ~~they~~ ^{trout} will often take large attractor flies that represent nothing in the stream.

This last season I fished with WRC member Dick Blumerskine. Dick and his wife Burt visit the Yellowstone area the month of September every year. At this time of season the nights are getting

-3-

Cold. Hatches are shorter and some of the hatches disappear. Dick and Burt and their fishing friends Red Lang and John Basnijian would laughingly tell me, when I asked how they were doing and what they had done well with, "Number ten Royal Wulff." Not matching the hatch resulted in excellent dry fly fishing. Dick proved it to me the day we fished the Madison river between Reynolds Pass and various sections to Varney Bridge.

The special regulations on the Madison in this area have created heavy populations of trout like the old days. So methods that worked ~~worked~~ 20-30-40 years ago, are back in style again.

HAUTE CUISINE

Last November Pat and I spent several days fishing the Big Hole, Beaverhead, and small streams in that area. We stayed ~~at~~ ⁱⁿ Dillon, Montana ~~where~~ ^{where we} discovered the Bannock Room ~~at Dillon~~.

The decor is early western frontier cattle days, as Dillon ^{itself} ~~really~~ is. The food is sumptuous western cattle ranch fare. Perfectly O.K.

to dine with your large western hat on.

After leaving Dillon early one morning we stopped for breakfast in Sheridan Montana. (About a 45 minute drive). We chose the Sheridan Bar and Cafe because that seemed to be ^{the} only restaurant in town. Bacon and eggs, Ranch fried potatoes just like they served on the ranch. The bacon is cured in Sheridan, by Madison meat Co., terrific.

SMITH RIVER

For a float trip to fish ~~for~~ several days the Smith offers a unique experience. Access is limited to float fishing most sections. Try to arrange for the early part of the season before low water.

We can provide you ^{with} ~~contact~~ with an outfitter ^{to contact} ~~who~~ specializes in this ^{particular} trip. Food is reported ~~to~~ to be excellent and all details of the trip well attended to. Write or call for details.

FLOAT FISHING

Float fishing on the Madison River will be on the same sections this year as it was in 1983. From MacAtee Bridge to Varney Bridge, you must get out of the boat to fish.

The controversy over float fishing on rivers flowing through private lands in Montana has been in the courts for several years. ^{On} March 31, 1984 a hearing will ^{be} held by a legislative committee to hopefully draft legislation that will accommodate both the landowner and sportsman. We will report in the May newsletter.

~~Steelhead and~~

STEELHEAD and SALMON

Pat and I spent two weeks fishing the rivers on the Olympic Peninsula in the state of Washington and a river in Oregon for steelhead.

The last weeks of Jan, we had limited success, but we learned that the steelhead are there both winter and summer.

I fished in Washington with guide J. D. Love of Port Angeles, Washington. I had met J. D. as a guide when I fished in Alaska. I fished only with flies and the winter steelhead are tough to catch with flies. Lure fishermen were doing very well. J. D. and I will try it next September or October when fly fishing is best, he tells me.

J. D. Love spends summers guiding

in Alaska for Bob Devito. Bob has a simple but excellent camp on a good river for a variety of salmon, rainbows and grayling. If you would like additional information and any help in planning a trip with either of these men let me know. I recommend them.

We also spent several days in Oregon with Doug and Jo Raines at their condo on the Oregon coast. ~~Down~~ Their son Jeff floated ~~on~~ ~~in~~ a lovely stretch of river. Rainfall had raised the river and only lures were effective, but steelhead ^{up} to 10 pounds were being caught and also an occasional sea-run cutthroat.

The steelhead on the Washington rivers I fished are caught often enough to be authentic, 18-20 pounds. However the Oregon rivers offer ^{more} ~~not~~ ~~of~~ fish at times, but smaller.

We hope to go back.

CHRISTMAS ISLAND

A small atoll in the Pacific 1300 miles south of Hawaii may be stretching the boundaries of our western Rivers Club, but it has great fishing for bonefish on a fly.

~~Our hosts~~ Doug and Jo Raines have a very successful travel business in Oregon. I asked Doug about Christmas Island, and after ~~the~~ years of experience there are few places on earth they do not know about or have ^{not} arranged travel to. Doug admitted I had done the impossible, ~~he~~ I had foiled the old master and asked about a place that he didn't know much about. ~~Christmas Island~~ so I foiled the old master.

Doug, however, researched Christmas Island carefully and supplied me information on how best to get there. I have also been in contact with people that first discovered the bone fish in the Pacific. "Sports Illustrated" had a story on this last December. We have details if requested.

CLUB PINS

There are still Club Pins available to Charter members. This is a very handsome pin designed for us by artist Pam Lanza of Bozeman, MT. \$6.50 PPD

PAT and BUD

We had a delightful winter break

from mid-January to early March,
fishing along the Washington and
Oregon coasts, then a month of
surf and sand in ~~Maui~~ Maui, Hawaii.
Pat gets brown and I get a few
freckles and sunburn.

Just prior to leaving on our
break, I accepted the Chairmanship
of the International Fly Fishing
Center Committee. The Center is
being developed in the historical
Union Pacific dining room at
West Yellowstone, MT. It
will be my function to help those
dedicated to getting the Center
open for the coming summer
Season.

The program is finally moving well
towards ~~having~~ a Center featuring
tackle displays, museum, art
of angling displays, fly tying
and casting demonstrations
and instruction, seminars, etc.
It is going to be a great place to
visit. If you would like to make
a cash contribution to help all
this come true, send it to:

Mrs Esther Simon - ~~Exec. Director~~
4628 So. Ward Way ^{Exec. Director.}
Morrison, Co. 80465

Sorry for being almost a month
late with this newsletter.

Bud and Pat

Information for outdoor
seminars and workshops

Fly Fishing Instruction

Local Information

Scenic river float trips

Historic sites

Wild Mushrooms & Berries

Scenic Drives

~~Info~~ Travel Information Centers

Newsletters Feb, May, Aug.

Predictions on Hatches

Water conditions, snow pack
run-off

Places to stay & eat if driving to
Western rivers

Places to visit if driving to western
rivers

Not a travel agency

Suggest guides, motels, restaurants
car rentals

Custom trip planning

Individual

Groups

Family

Small streams

Right place at right time

Suggest several choices for guides,
motels

Questionnaire - Check list of questions
Type of streams, wet fly, dry fly
Tackle, wading, guides, backcountry
ranches, motels, camping, insects
private plane, fly, drive, dates of
trip, fished western streams before
number in party, experience, special
problems, clothing, license

Public access

Fishing regulations

Fisheries management

Club patches, Pins, shirts, hats, etc

Club special offerings of prints,
bronze

Limited offerings of special tackle items

Ladies only program

Maps

Membership card

Charter member

Referrals

Special activities

Rodeos

Pageants

Shops

Art shows

Galleries

Antiques

Museums

~~Dinners~~ Club sponsored

suppers

Local Celebrations

Swimming

Horseback riding

wildlife - wildflowers

Dick Senn
239 Hedge Rd
Menlo Park, Ca. 94025

B.R. Cahill
416 St. Marie St.
Peoria, Ill. 61614

Prescott Tolman
c/o Postmaster
Henryville, Pa. 18322

Frank Richardson
2595 Lake Capri Dr.
Lithonia, Ga. 30058

Ross Roberts
P.O. Box 996
Joplin, Mo. 64801

Frank Salley
Camden County Pa
Camdenton, Mo.

Nathaniel P. Reed
P.O. Box 375
Jupiter Island
Hope Sound, FL 33455

Fred Case 4209 El Monte

Saginaw, MI

J.L. Hutton
6715 E. Doubletree
Phoenix, Az.

Sam Boyington
Clay Court
Lancaster, N.J. 07760

Darwin Atkins
354 N. Park St.
Parterville, ca.

Richard Trences
7239 Madoc St.
Bause, Ill. 83703

John Almklov
2616 3rd St
Bakersfield, Ca 93307

Eugene McKenzie M.D.
1345 Hickory Ridge
Memphis, TN 38116

Veryl Frye
407 College St
Somerset, Ky 42501

Neal Oakes
2301 E. Wright Blvd
Baytown, Tx 77520

Albert Minelli
RD #1 Box 84
Latayette, N.W. 07848

Donald Pyle M.D.
3001 River Rd
~~Pt Pleasant, NJ~~
Pt Pleasant Beach

Chas Church
8 Island Rd High Point
Jensen Beach, Fla. 33457

N.J. 08742

Rodney Stone M.D.
8345 William ~~St~~ Ct
S.L.C. Ut. 84107

Jack Gartside
10
Boston, ma.

John Catron
Box 788
Santa Fe, N.M. 87501

Spence Murphree

Frank Sallee
R.F.D. Box 146
Anderson, ms. 64723

Jack Izard
Atlanta, Ga.

Joe Vollmer
10 So. Fair Oaks
St. Louis, mo 63124

Lee Wulff
Star Rte
Livingston, Ranor, N.Y.
12758

Points. Access is still not a serious problem, but development is occurring and restriction to access grows. Fortunately, there is public access in Parks and National forests, ~~to~~ great western rivers.

We are offering charter members a membership card that will be numbered ~~with~~ date of issue that will be valid for 3 years. To renew your full trip planning and newsletter service a ~~charge~~ ^{payment} of 25⁰⁰ a year must be received. ~~and~~

Please enroll me as a member of Western Rivers Club for one year. My payment of \$50⁰⁰ enclosed. Yearly renewals may be made at 25⁰⁰ per year.

Name
address
Telephone

Please send this Western Rivers information to: Name
address

Name
address

Name
address

What does wild mushrooms and wild berries have to do with a Western fishing trip? Plenty. In addition to enjoying the finest trout fishing, you will ~~do~~^{be} in mountain country with wildflowers, wildlife and clean air. We can tell you where to ~~enjoy~~^{revel in} these ~~most~~ to your heart's content.

Besides the fishing we can help you in your planning to obtain information for:

- | | |
|--------------------|-------------------------|
| Rodeos | Swimming |
| Festivals | Horseback riding |
| Special shops | Fly Fishing Instruction |
| Art shows | Outdoor Seminars |
| Galleries | and Workshops |
| Antiques | Scenic river float |
| Museums | trips |
| Local Celebrations | Historic Sites |
| | Scenic Drives |

Each member of Western Rivers Club will receive a membership card that may be ~~used~~ presented when seeking local information from ~~shops~~ tackle shops or other ~~experts~~ we will inform you about. sources

Your membership card will identify you, if you ~~ask~~ for access to a stream on private land. We will help in locating these access

Commissions from any services we recommend. If you request suggestions for where to stay, good restaurants, guides, car rentals, etc we will happily make our best choices available to you.

In addition to our planning services, three newsletters will be issued each year. February, May and August. Fishing forecasts and tips, water conditions, when certain hatches are expected, fishing regulation update, fisheries management programs and of course a vital factor of western rivers information, being in the right place at the right time. Not only time of year, but time of day.

I suspect that we may use the newsletter to tell a few fish stories as well.

Planning a trip with you means a custom plan for you, a group or your family. Each situation we have arranged and helped with countless times. Enclosed is a news clipping that explains our experience.

~~West~~

WESTERN RIVERS CLUB
2007 Sourdough Rd
Bozeman, MT 59715
Tel- 1-406-586-5140

Many of you may know that we sold our shop this past spring. We sold the shop, but not our love of fly fishing nor the pleasure of helping others enjoy the sport and to have a "total outdoor experience".

Through the ~~During our~~ years of dealing with those fisherman and their families that fished the streams and lakes in our area of Idaho, Wyoming and Montana we learned what information and help made their visit a success. ~~and a pleasant one.~~

We have, ~~of course~~, kept up with the fishing in the Yellowstone area daily, ~~and~~ also spent time keeping up with all the prime waters within a day or two drive from the waters of Yellowstone, ~~in Idaho Montana and Wyoming.~~ Many friends also will provide current local information

With this experience and knowledge we would like to offer our service of planning a Western rivers trip with you. We're not a travel agency. We will accept no

Points. Access is still not a serious problem, but development is occurring and access does become restricted as a result. Fortunately there is public access in Parks and national forests to great western rivers.

Rephrase

The first one hundred members to enroll will receive a numbered Charter Member Certificate in addition to presentation membership card, trip planning services and three newsletters annually.

Western Rivers Club
Bud and Pat Lully

~~Gift Certificates are~~

Please enroll me as a member of WESTERN RIVERS CLUB for one year. My payment for \$50.00 enclosed.

Name

address

Telephone

Gift Certificates are also available

Please send Western Rivers info to:

Name

address

Name

address

~~Members will receive a membership card. If a member requests us to do so, we will~~

~~Members will receive a membership card good for one year. If a member elects to do so, the card could be used for credentials when seeking local information or access to private lands. Members will receive three newsletters annually and our trip planning services~~

~~Each of the first one hundred membership applications will receive a membership card numbered and designated charter, and a numbered charter member certificate will also be sent also to the first one hundred that enroll.~~

~~membership
Each member will receive a certificate for framing if you wish. The first one hundred members to enroll will receive a certificate of~~

~~will be charter members.~~

style



shoot

style ↓

Volume 2
Number 6

NEWSLETTER

August
1984

AMBASSADORS

The governor of Montana recently appointed 165 business men and women as ambassadors for his "Build Montana" program. Each ambassador is charged with helping business executives learn more about Montana as a place to locate a new business or expand into.

My function is more specific. I was named as chairman of the "Catch and Release Fly Fishing Tours" for visiting executives. The state of Montana will host 12-16 executives providing meals, lodging, tackle, and fishing guides for three days of fishing. Along with other committee members I will be responsible for all the planning and execution of the "tour".

The fact that the governor has endorsed a "Catch and Release" tour has put an indelible stamp on Catch and Release as a management tool on Montana trout waters.

CATCH AND RELEASE

This season has confirmed the great response of trout in the Madison River to the 30 mile section of release waters and to reduced limits in other sections. The problem this season has been heavy fishing pressure caused by other rivers being high and muddy. The Madison not only has more trout, but strong, well-conditioned trout.

Also, I can report that the cutthroat in the catch and release section on the Yellowstone river in Yellowstone Park continue to get bigger. The cutthroat is not a strong fighter until it gets 18 inches and larger in this river. These larger cutthroat are strong and have stamina. Two weeks ago I had a day in which I released a number of cutthroat that size. I felt I had all the sport I could from those fish.

FIREHOLE RIVER

For those of you planning to fish the Yellowstone area this fall, don't overlook the Firehole. We found the fish to be fat and sassy in June and, as days turn cooler, the hatches will appear again for good dry fly action through the months of September and October.

LATE SEASON HIGH WATER

A number of western rivers have had little fishing pressure as they remained swollen by late snow melt and heavy rains. The Yellowstone, Gallatin, Jefferson, Missouri, and Lamar are just now clearing and dropping to good fly fishing conditions.

OUR SILVER GATE EXPERIENCE

Last week, two good friends from Bozeman, Ed Hines and Cory Dogterum, joined me for a fishing outing. We stayed at Silver Gate, the northeast entrance to Yellowstone Park (see Dan Baily map). We had hoped to fish the Lamar one day, but heavy rains again had kept it muddy. In fact, it is going to be prime soon as no one has fished it yet. Grasshoppers will be good in September.

We fished lower Slough Creek on two occasions and found no hatches as the water was chilled by rains. An accidental lock-up to an over-curious cutthroat happened here and there, but large cutthroat and hybrid rainbow are available. We plan to return.

The Yellowstone in the Park threw us a curve. I mentioned my success there several weeks ago, but it was not repeated. Those large cutthroat were feeding and we fished to them all day without ever finding the answer. Fortunately, we landed a few, but left somewhat stunned.

This does occur and when it does, cutthroat demonstrate their sophistication, too.

Silver Gate still remains a quiet entrance to Yellowstone. The traffic was light, but the wildlife in the Park was heavy in the northeast portion. The Lamar Valley has such good grass because of all the rain, so the bison had not moved to the higher meadows. We saw several hundred. We also saw a grizzly sow and cub.

You no doubt have heard of the most recent grizzly episode in the area of Pelican Creek of Yellowstone. A hiker was dragged from her tent and the grizzly ate part of her. The bear we saw could have been that bear.

INTERNATIONAL FLY FISHING CENTER

We are very proud of what has been accomplished so far on the Center. The old Union Pacific dining room that houses the Center has undergone considerable restoration as a historic building. It is all operable and the public is allowed to tour the building without cost. The museum is in place, but still quite limited; the Pat Lilly Art Gallery is really stunning and the artist response is tremendous.

Several angling library collections have been willed to the Center. The original room assigned as the library is already becoming crowded.

The Grand Opening is scheduled for August 15. At 2:00 p.m. of that afternoon the ribbon cutting ceremony will be held. The governor of Montana, and the superintendents of Teton Yellowstone, and Glacier National Parks will be the principals. That evening we will have a dinner seating about 700. Bobby Knight, our Olympic basketball coach, will be the speaker. I promised to take him fishing.

Hope you are enjoying a good summer season.

Bud Lilly



Western Rivers Club
2007 Sourdough Road
Bozeman, MT 59715

WESTERN RIVERS CLUB
Bulletin - June 1987

The response to the Western Rivers Club by those members who were with the club in the beginning has been great and many new fly fishermen have joined as well. The "Club" is off and running again. Thanks to you.

For those of you who have not yet joined, I hope you will do so soon. Fill out the information at the bottom of the bulletin.

Membership cards are enclosed for those of you who recently sent me your 1987 dues.

Information is enclosed for pack trips into the Absaroka-Beartooth Wilderness. This will be a marvelous year for back country trips. The ice and snow will be out of the mountains early. Recent spring snows and rain will bring out the wildflowers to regenerate that special world in the peaks.

My friend Ernie Strum of Red Lodge, Montana will be a packer and guide with the Seven C Quarter Circle this season. Ernie is a very good fisherman and the kind of man you will enjoy being with in the great outdoors. The Beartooth offers the most spectacular mountain scenery in the Rockies and some wonderful high country fishing.

My book "Guide to Western Fly Fishing" is now available. For autographed copies I suggest you order from: Bud Lilly Trout Shop, West Yellowstone, MT 59958, or the Rivers Edge, 2012 N. 7th, Bozeman, MT 59715.

The West has been facing a drought and still will experience low water in the streams, but we have had some help. It has really rained throughout May. This will keep salmon fly hatches closer to normal emergence dates as well as other hatches. Look for most conditions to be about 10 days early. I'm still suggesting this to be a very good year on the big rivers. I like the Yellowstone, Missouri and Clark Fork.

The DePuy spring creek south of Livingston, Montana has had some extensive stream restoration. This is a for-pay stream and offers some excellent and challenging fishing. Phone 406-222-0221.

For those of you who dream of owning a piece of your own trout stream or recreational property in the West, my wife Esther has some interesting listings. She can be reached at her office ... 406-587-9566.

See the reverse side for membership application.

Bud Lilly

WESTERN RIVERS CLUB
2007 Sourdough Road
Bozeman, MT 59715
406-586-5140

Please enroll me in the Western Rivers Club
for one year from the date on this application.

My check for \$25 is enclosed for news-
letters, bulletins and fishing infor-
mation.

My check for \$50 is enclosed for news-
letters, bulletins, information and
full trip planning service.

My check for \$50 deposit is enclosed
for fishing with Bud _____ days on
_____ at \$250 per day.
Lunch and transportation provided.

Total \$ _____
Name _____
Address _____
Telephone _____ Date _____
Signature _____

WESTERN RIVERS CLUB

2007 Sourdough Road • Bozeman, Montana 59715
Tele. 1-406-586-5140

Many of you may know that we sold our shop this past spring. We sold the shop, but not our love of fly fishing nor the pleasure of helping others enjoy the sport and to have a "total outdoor experience."

Through the years of dealing with those fishermen and their families that fished the streams and lakes in our area of Idaho, Wyoming and Montana, we learned what information and help made their visit a success.

We have kept up with the fishing in the Yellowstone area daily and also spent time keeping current with all the prime waters within a day or two drive from the waters of Yellowstone.

With this experience and knowledge, we would like to offer our service of planning a western rivers trip with you through your membership in the Western Rivers Club. We are not a travel agency. We will accept no commissions from any services we recommend. If you request suggestions for where to stay, good restaurants, guides, car rentals, etc., we will happily make our best choices available to you.

In addition to our planning services, three newsletters will be issued each year in February, May and August. The newsletter will cover fishing forecasts and tips, water conditions, when certain hatches are expected, fishing regulation update, fisheries management programs and of course, a vital factor of western rivers information, being in the right place at the right time. Not only time of year, but time of day.

I suspect that we may use the newsletter to tell a few fish stories as well.

Planning a trip with you means a custom plan for you, a group or your family. Each situation we have arranged and helped with countless times. Enclosed is a news clipping that explains our experience.

What do wild mushrooms and wild berries have to do with a western fishing trip? Plenty. In addition to enjoying the finest trout fishing, you will be in mountain country with wildflowers, wildlife and clean air. We will tell you where you can revel to your heart's content.

Besides the fishing, we can help you in your planning to obtain information for:

Rodeos	Museums	Outdoor Seminars + Workshops
Pageants	Local Celebrations - <i>Pageants</i>	and Workshops
Special Shops	Swimming	Scenic River Floats + <i>Travels</i>
Art Shows <i>Galleries</i>	Horse Back Riding	Historic Sites
Galleries	Fly Fishing Instruction	Scenic Drives
	Antiques	<i>Plumms</i>

Each member of Western Rivers Club will receive a membership card that may be presented when seeking local information from tackle shops or other sources that we will inform you about.

Your membership card will identify you if you ask for access to a stream on private land. We will help in locating these access points. Access is still not a serious problem, but development is occurring and access does become restricted as a result. Fortunately, there is public access in Parks and national forests to great western rivers.

Each member will receive a membership certificate for framing if you wish. The first one hundred members to enroll will be *charter* members.

Western Rivers Club
Pat and Bud Lilly

Please enroll me as a member of Western Rivers Club for one year. My payment of \$50.00 is enclosed.

Name: _____

Address: _____

Telephone No. _____

Gift certificates are also available.

Please send Western Rivers info to:

Name: _____

Name: _____

Address: _____

Address: _____



Volume 1
Number 1

NEWSLETTER

February
1983

A NEW MAP

The enclosed map is provided with the compliments of John Bailey to charter members of our club. This is the most comprehensive stream coverage of any map that has been done on the area. The angling information and philosophy of using and enjoying the whole area is accurate and very helpful.

In our future plans let us use this map as a reference. We can provide exact information on final plans using U.S.G.S. topographical maps and U.S. Forest service maps.

I'm sure you are going to find streams and rivers on this map that you are not familiar with or have never heard of and may arouse your curiosity. Pat and I have spent a tremendous amount of time exploring almost all of the waters and will be pleased to provide any information we can.

With the improvement of the fishing on western streams through better conservation, stream habitat and special fisheries management, more and more anglers have come to fish the better known rivers. Overcrowding, in my estimation, has resulted during peak of the season on some of the rivers. Examples are the Railroad Ranch section of the Henry's Fork, the section known as the Barn Pools on the Madison in Yellowstone National Park.

NEW WATER

Overcrowding is the result of anglers concentrating on the major publicized hatches or when trout are migrating to spawning areas. The adventuresome angler can find equally as good fishing on well known rivers by learning time of season and sections of streams that are not publicized. We can help you in this regard.

There will be some exciting new water on the Madison River this season. February 1, the river closure between Squaw Creek and Wolf creek opened to catch and release fishing after a seven-year period of **no** fishing. Electro-fishing studies reveal this 4½ miles of river to average 4500 trout per mile. Brown and rainbow trout are about equally distributed.

The Madison in this region flows through private land. Current Montana legislation is pending to define sportsman's right of access to float navigable streams. It now appears that float fishing will be permitted.

STREAM ACCESS

Should the landowners not allow access over private property, we will be in touch with them to gain access for club members if they ask permission to do so. We will be doing this for members on any waters that are posted no trespassing.

The Big Horn River reopened to public fishing two years ago. The number of large trout in this big river has attracted a lot of attention. The trout have proven to be there and willing to take a fly. The river is controlled by Yellow Tail Dam. Flows are critical to angler success. Snow pack this year in those drainages is less than last year, which should make a much better fishing season.

Access to the Big Horn is restricted from Yellow Tail Dam downstream as it meanders through Indian reservation lands. Float fishing is advisable. We will help select a good outfitter should you elect to do this.

Streamers and nymphs are standard, but late summer and fall mayfly and caddis hatches appear. Fishing along weed beds with small dries can produce some amazingly huge trout.

ON THE MISSOURI

The Missouri River will begin to see more fly fishermen since articles have appeared in angling magazines this past year extolling its virtues — and they are true. From late July through September, on normal water flow years, the Missouri below Holter Dam for many miles offers excellent wet and dry fly fishing. There are copious hatches of mayflies and caddis. Access is simple on much of the river as it is near highway frontage roads.

September and October, the rainbows and brown commence spawning runs. Prime areas are stretches from Tostom Dam to Canyon Ferry Reservoir, below Hauser Dam and below Hauser Dam at Beaver Creek. Colorful streamers, sculpin patterns and large nymphs are most productive for trout from 2 pounds to 8-10 pounds.

These are some of the "new" waters we will be telling you about in the newsletters. In our spring issue scheduled for May, Jack Gartside, one of the most creative fly tiers and anglers in America has written a special piece for Western Rivers Club. Jack will disclose some of the secrets and pleasures of fishing waters in and around Yellowstone Park.

(over)

SPRING PREDICTION

Weather in the Rocky Mountains has been mild this winter. Early heavy snows will provide enough stream flow, unless lack of precipitation continues into spring and summer. Our prediction is for streams to clear and drop about on schedule with an average year. Last year was abnormally high water. The high water increases ground water that will help off-set lower flows this season should we continue in a dry cycle. Like all predictions, I admit I'm guessing.

WHAT TO DO

If you plan to fish the Missouri, write to the Helena Chamber of Commerce for a schedule of local events. The famous "Last Chance Gulch" in downtown Helena will be high-lighted with a series of events.

Plan to visit the "Gates of the Mountains" on the Missouri. Tour boats can also show you this unusual scenic area.

A SPECIAL DEAL

Fred Terwilliger, owner of Bud Lilly's Trout Shop, is offering Western Rivers Club members 5% discount on all purchases and guided fishing trips — just present your membership card.

NEW SERVICE

Greg Lilly and David Corcoran will open "Rivers Edge" May 1 in Bozeman, Montana. Their specialty will be fine clothing and fly fishing tackle. Their guided fishing trips will include a heavy interest in the early history of the area surrounding the upper headwaters of the Missouri. Greg's knowledge of Montana streams and history is derived from his family's settlement in Montana during the gold rush days at Virginia City.

POST SCRIPT

Sorry to be a little tardy with our first newsletter. Pat had a battle with the flu, but is now recovering well.

Look forward to helping you with your plans for visiting and fishing these great waters this coming season.



Bud and Pat Lilly



Bud and Pat Lilly

2007 SOURDOUGH ROAD · BOZEMAN MT 59715 · (406) 586-5140



WESTERN RIVERS CLUB UPDATE

March 1983

Earlier this year we sent you materials announcing the formation of the Western Rivers Club along with a membership application.

The purpose of the club is to keep you informed on the fishing in the area of Yellowstone National Park, southwestern Montana, and parts of Idaho and Wyoming to help you plan your fishing trips to this area by assisting with suggestions for accommodations, where to eat, what to see, special events, reliable guides and of course where and when to go fishing.

In addition we promised to send you three newsletters a year to be published in February, May and August. The first newsletter was mailed to club members this past February along with other special materials we thought would be interesting and helpful. The response from members to this mailing has prompted us to contact you again.

The enthusiasm of present members in what the club is and can do for them may also do the same for you. We will be pleased to send you a membership. Just enclose \$50.00 for a one year subscription along with your full name and address.

Bud and Pat Lilly



Volume 1
Number 2

NEWSLETTER

May
1983

SUMMER HATCHES

Many of the major hatches on western streams are well known to most anglers. The big question is always the same on those hatches that have limited duration, when can we expect it this year?

The Salmon Fly hatches are the most illusive as they occur when rivers are still cold and influenced by snow in the spring run-off. Spring here means well in to June. From indications at the present time, it appears that Salmon Flies will be hatching on the Henry's Fork from about May 25 to June 10, on the Fall River and Big Hole June 15 to June 25, on the Madison from June 28 to July 10, on the Yellowstone from July 10 to July 25.

The well known green drake hatch should occur about June 20 in the Island Park area of the Henry's Fork, followed by brown drakes the first week in July. Not so well known green drake hatch about the same dates on the Madison in Yellowstone Park and the Lewis river in the Lewis Meadows. A brown drake appears on the Gibbon river in the park about mid-June for a week or so. A gray drake emerges on the Yellowstone river in the Hayden Valley section, the last week of July to create some classic rise forms from gullible cutthroat.

Caddis hatches occur on almost all western streams from spring throughout late summer. The caddis has become a major hatch on the Madison from the outlet at "Quake" lake on downstream. Those parts of the Madison flowing through countryside with sagebrush and willows will have copious caddis hatches. I have to say that fishing the Madison with size 14-16-18 caddis imitators last season was really good throughout summer and fall.

From the middle of July until early October, grasshoppers will be a favorite trout food on rivers and lakes. Jack Gartside ties the finest Pheasant Hopper, a pattern that he originated and no one can tie as well. The unique coloring of the pheasant feathers make it a very good producer. The larger selective trout feed on grasshoppers also.

A spruce moth hatches on Rock Creek from late July to August. Rock Creek has catch and release areas and is providing spectacular fishing especially during this hatch. (see Dan Bailey map).

RIVER FLOAT TRIPS

Consider these rivers in addition to the more famous when planning river float fishing trips. The Smith from late June and July. The Clark's Fork on the Columbia from Missoula to Deer Lodge, August and September. The Missouri from Toston dam to Townsend, October and November. The Clark's Fork of the Yellowstone, August and September. The Bitterroot, July.

OTHER ACTIVITIES

For a "complete" source of information write: Travel Promotion Bureau, Dept. of Commerce, Helena, Mt. 59620 or call toll free 1-800-548-3390 and ask for the 1983 Montana Vacation Planning Packet. I have sent along in this mailing the Montana Vacation and Information Guide.

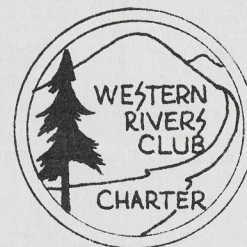
MAGAZINES AND BOOKS

For those of you interested in the early history of Montana, I have enclosed subscription forms for the Historical Society Magazine. A magazine known just as "Montana" will feature fly fishing in Montana in the issue available in May. Write: Montana Magazine, Box 3630, Helena, Mt 59604.

The Yellowstone Park Library and Museum Assoc. has had a new book published, FRESH WATER WILDERNESS - Yellowstone Fishes and Their World. 132 pages with twelve color plates of the game fish in Yellowstone. The color plates were done by western wildlife artists. Soft cover - 18.95, Hard cover 24.95. If your favorite bookstore doesn't have this book contact one of the following: Bud Lilly's Trout Shop, Box 698, West Yellowstone, MT. 59758 or the River's Edge, Box 4019, Bozeman, MT. 59715. I understand they expect to have it available.

CLUB PINS

We had a club pin struck in a limited edition of 100. It is 1 1/4" in diameter of solid metal with a gold base and colored enamel with a lock pin. As the illustration shows, the first 100 limited edition pins are "charter" pins. Price is \$6.00 each and one may be ordered for each family member registered with the club. Add .75¢ for mailing.



JACK GARTSIDE

Jack wrote the piece "The view from Baker's Hole" especially for the Western Rivers Club members. Jack has promised to write other articles for us from time to time.

BUD AND PAT LILLY

We will often be away from Bozeman several days at a time fishing and exploring. If you try to call and no one answers, try again in a few days. We will be fishing in Washington and Oregon for several days in May and expect to be back about May 15.



Volume 1
Number 3

NEWSLETTER

August
1983

NORTHEAST YELLOWSTONE PARK

The Madison and Firehole rivers in the southwest part of Yellowstone are the famous classic streams of the park. Being classified fly fishing only, with a two fish limit of 16" or larger in the early 1950's, they became excellent fishing rivers with brown and rainbow trout.

However, as catch and release regulations along with artificial lures only were applied on portions of the Yellowstone river, Slough Creek, Lamar river these waters have become excellent fishing too, for cutthroat trout.

The Lamar and its tributaries, Soda Butte and Cache Creek, have hybrid cutthroat. The hybrids get larger and fight like rainbow. Late July, August and September is the best season on these streams. Small mayflies, caddis and grasshoppers are standard, but attractors like the Royal Wulff in the rocky pocket water sections is always reliable.

CAMPING AND ACCOMMODATIONS

N.E. Yellowstone Park entrance is at the base of Beartooth Pass. A spectacular drive from Red Lodge, Mont. takes you over this breath taking mountain area to Cooke City and the hamlet of Silver Gate, a mile or two from the Park entrance.

Cooke City and Silver Gate have a number of nice small motels, cafes, a gift shop or two and good general store in Cooke City.

In Silver Gate, the Soda Butte Lodge is the place to stay. Recently purchased by two avid fly fishermen, Ralph and Carol Staton. They have completely remodeled every unit into neat, clean, comfortable and reasonable rooms. Some housekeeping available. Located on the banks of Soda Butte Creek, surrounded by awesome peaks makes a stay there an experience in itself.

Ralph and Carol can help you locate the best fishing in the Park or the Beartooth Primitive Area. The Beartooth with its hundreds of lakes, the Clarks Fork of the Yellowstone, we will tell you more about another time.

In the Park to stay in the N.E. area of the region, rustic camper cabins are available at Roosevelt Lodge. A restaurant and general store provides food and supplies. They also offer horseback rides, stage rides and chuck wagon cookouts.

Campgrounds are Slough and Pebble Creek. Both are right on the creek in the pines. Either site is only a few miles from the streams discussed here.

A book "Exploring the Yellowstone High Country" by Ralph Glidden will give you detailed descriptions of the Beartooth and surrounding area of Cooke City. Available at shops in the vicinity or I can tell you where to order.

FALL FISHING

September and October is fall fishing in Yellowstone Park as the season closes at the end of October. The migratory brown trout are well known in the Madison. There is also fine fishing for rising trout on small dry flies on all streams at this time.

The last few years I've really enjoyed fishing the Yellowstone river in the catch and release section in late September and October. Using large nymphs, leech patterns and streamers fished in the riffles bring large cutthroat to the fly. These 18-20" trout fight equally as well as the fall spawning browns. The bonus is no one else is fishing there while others flock to the barn pools on the Madison.

FALL FISHING—Other Rivers

I asked the folks at the Rivers Edge shop here in Bozeman to write a few lines on the upper Missouri watershed. Here is what they have to say. "If you enjoy clear crisp autumn days, fishing big flies with large trout possibilities and doing it in solitude, then consider the fall season in the Upper Missouri area.

There is not a better concentration of prime fall trout streams in the country like those found around Bozeman, Mont. Rivers like the Missouri, the Jefferson, the Lower Madison, the Lower Gallatin, and the Yellowstone, all will be fishing well. A cold late Spring and normal snowpack in the mountains will keep flows at optimum levels.

We prefer to work large attractor streamer patterns such as Zonkers Marabou Muddlers, Spruce Flies, and Wooley Buggers, on Hi-Density sinking tip lines. Dry fly fishing is available, but hatches are erratic and the insects small. Most larger Browns and Rainbows that the Autumn anglers dream of are taken on large wet flies.

Plan to fish between September 15 and November 30. The resident anglers have put away the fly rods and picked up their firearms. The tourists have left for the season. You will have hundreds of miles of rivers virtually to yourself. Weather can be inclement. Be prepared!!

NORTH FACE OF YELLOWSTONE

A guidebook to have for complete information on what to see adjacent to the borders of Yellowstone Park is called just that "North Face of Yellowstone." This is a general guidebook concentrating on the spectacular and mostly mountainous region lying in a 200 mile arc on the north side of Yellowstone Park. The book is divided into sections which provide the prospective visitor with strategic information, including suggestions for planning individual motor trips. The book is also accompanied by a special map of the entire region. When fly fishers travel with other family members, the book is particularly important, since it provides information for many other activities

besides fishing. There is also useful information on transportation into the North Face region from any part of the United States. The book, which is updated annually, retails for \$6.95 and is available from the publisher. Please write North Face Guidebook, P.O. Box 459, Bozeman, Montana 59715.

STORY SPRING CREEK

Enclosed is a leaflet on a lovely small creek. Two miles on a private ranch that is in the process of improving and restricting the fishing.

Although the creek has not been fished for years, beaver dams and grazing hindered its natural condition. Now it is fenced off and the dams taken out to allow spawning run from the East Gallatin River.

Registration to fish or for more information is the exclusive concession of the Rivers Edge, 2012 N. 7th Ave., Bozeman, MT 59715. Tele: 406/586-5373.

MEMBERS LETTER

We are pleased to enclose a letter received from charter members Doug and Jo Raines. We would be pleased to hear from any of our members at any time for suggestions and criticisms.

CLUB PINS

Charter members have not responded well to the offering of Club pins. As Doug Raines pointed out in his letter, they are a classy pin that we feel you would enjoy having. Send us \$6.50 for the pin and postage.

Bud and Pat

Late July..1983

Dear Fellow WRC Members...

Not long ago, Bud and I were sitting in his beat up truck waiting out a typical Montana "breeze" on the Madison River near Ennis...and our conversation turned to the Western Rivers Club. The comments and thoughts that were exchanged ranged far and wide..and I thought perhaps it would be an idea to share them with other WRC members.

Inasmuch as I was lucky enough to get acquainted with Bud and Pat before they left the shop, and being full of ideas, I feel that I was really fortunate to be in "on the ground floor" of the ideas behind the formation of WRC. The four of us (my wife Jo is an ardent fly fisher too) kicked around a lot of suggestions before anything came out in print.

Now that the WRC is indeed a reality...albeit in the infant stages, the time has come to say more about it.

The concept is superb !!!..and what better folks to offer this service. Bud and Pat are spending an inordinate amount of time researching the bulk of western Montana....Bud calls it researching, I call it fishing.. anyway, the main reason for this "work" is so that the WRC member can have the most-up-to date report on streams...access...changes in regulations.. places to stay and eat. He even checked out the Grizzly Bar at the West Fork Bridge for us. Says under the present ownership it is sanitary and serves good hot dogs !!! This may sound like fun to some but since I too do this sort of travel for a living (my wife and I operate a travel agency) I can assure you that travel for research purposes can soon become work... even if you love your work.

But "working" they are...and I have "tested" bud to make sure...with questions about where to go..when to be there...how to get there..what fly to fling.. and while Bud won't tell you what rock to stand on, I think you can rest assured that if he tells you something about it..he has been there !!!

I got sort of ticked when I read his detailed fishing report in the recent issue of the FFF mag..jealous may be a better word...I sort of thought that may most of that info should be reserved for WRC folks...got to talk with him about that...point of this part is to remind you to take advantage of him..call or write...and he will respond...with info worth far more than the cost of your dues...

It was fun too..while in Jellystone last month..to spot another WRC member.. and get to meet and visit..how did I spot him ?...by the classy WRC pin on his hat. The pin was well done and thru it, I met a neat guy who shared some of his secrets....

Like to see Bud put a "free Classified" section in the newsletter to I could sell or trade some of the treasures I have accumulated...

Point of all of this is to let you know...from my side of the river..the WRC is fun....and what better chance to take advantage of Bud & Pat..

Doug - Jo

Doug & Jo Raines



Bud and Pat Lilly

2007 FOURDOUGH ROAD · BOZEMAN MT 59715 · (406) 586-5140



October 1983

Dear Fellow Club Members;

Almost a year has elapsed since we formed our club. The club has provided Pat and I the opportunity to continue doing what we really enjoy and that is helping others enjoy the West and Western Rivers.

Those of you that made a trip here this year no doubt had some good fishing. Early season highwater hurt, but once flows returned to normal, fishing was good. We will be working to get special regulations expanded on some rivers and extended to streams that should have them and do not.

The Madison River is a "Blue Ribbon" example of how special regulations can improve a wild trout fishery. Last Saturday I had good dry fly fishing on large attractor flies, for about 2 hours in mid-afternoon. Not bad for October. Oh yes, I did see one other fisherman in the area I fished.

Our next newsletter will be sent to you in February. We are adding a notice column of ~~items~~ members would like to buy, swap or sell. Let us know of anything in the tackle line you would like to buy or sell.

We have discovered also that many of our club members have summer cottages or condos they are willing to trade or rent. Examples are--a condo at the mouth of a salmon rivers on the Oregon coast, a lovely summer home on the Madison including fishing guide, cook and housekeeper. Let us hear from you on this if you have something to rent or trade. If you just want a unique place to stay and fish, we can perhaps direct you to one of our members.

All year long we watch for interesting Christmas gifts. Here are some we think might interest you too.

If you have seen the book "Freshwater Wilderness" on fishes of Yellowstone, then a portfolio of 13 color prints of the sport fish done by Mike Simon are from the book. Quality 8 x 10" paper, set 7.95. Yellowstone Library, Yellowstone Park, Wyo. A finely hand crafted leather bound stream Log. The cover of fine 9 oz. cowhide, encloses a 3 ring binder holding heavy paper pages with lots of room for data--stream, details, fish caught and released, rods used, lines, reels, flies, leader size. \$26.95 ppd. Rivergood, P.O. Box 371, Salem, OR. 97308

Simulated wooden antique fly boxes, cherry, oak or walnut. Routed from solid block of wood. Seven cork strips hold several dozen dry flies or small nymphs. Size 4 5/8 x 2 3/4 x 1 5/16. Price 26.95 plus min. postage. Rivers Edge, Box 4019 Bozeman, Mt. 59715 or Bud Lilly's Trout Shop, Box 698, West Yellowstone, mt. 59758.

Pine needle baskets, handmade from Ponderosa pine needles. Intricate open-work designs in a variety of sizes and styles.

each of which is unique and exquisitely done. Sizes range from 3-4" to 8-10". Some with lids and in many shapes. Prices \$17-58.00. Bud Lilly's Trout Shop--406 646 7801.

Pam Lanza, the gallery manager at Bud Lilly's Trout Shop, designed our WRC logo and charter club pins. Pam will do a gift certificate for a christmas gi t of a Western Rivers Club membership. Send the name of the lucky recipiant to us.

There are still charter club pins available. This would make a neat stocking stuffer. 6.75 ppd.

Last of all, we would like your help in recruiting new members. We prefer not to advertise of members but to get them by invitation. We are enclosing several applications, please pass them along to those whom you think would like to join.

Let us take this opportunity, although a little early, to say "Merry Christmas".

Bud and Pat



Volume 2
Number 4

NEWSLETTER

March
1984

WINTER SNOWPACK

Snow surveys just released place most western river drainages in normal condition with expected run-off less than 1983. Late season moisture last year caused many rivers to be high.

Late season high water makes fishing difficult on rivers with Salmon Fly hatches in June and July, namely the Big Hole, Madison, and Yellowstone. These rivers promise to be in better shape this year. Improvement continues on these particular rivers with the special regulations in effect.

This season the Yellowstone River south of Livingston is included in special regulation management. A section of the river will be lure and flyfishing only, with a keep limit of one trout over 18" and two trout under 12". Cutthroat must all be released.

SPRING FISHING IN THE HELENA AREA

Doug O'Looney operates a tackle shop and guide service that is located in the capitol city of Montana, Helena. Doug provided the information that follows. So far, these streams have received little national attention.

Missouri River- Good floats from March on, dependent on Montana Power's releases from dams. We have four one day trips available from Holter to Cascade. Large streamers are the rule. Fishing can be slow, but larger fish are usually boated. Depending on water and air temperatures, good hatches of Blue Wing Olives can come off. We seem to have an ongoing hatch of small Black Stones on any given mild day into May.

Dearborn- Good nymph fishing early, before the runoff. Access is the problem but we hope to have this resolved in the courts soon.

Little Blackfoot- Good on any mild day, except during full runoff. A Helena favorite, mild pressure, something for everyone. No floating.

Clark's Fork (above Garrison)- The best kept secret within 100 miles- my choice anytime the weather is fair. Muddies fast with rain and thaw. Must wade, no floating. Takes awhile to warm in spring. The trophy fishing in the old Anaconda Ponds is available when the river is cloudy.

Missouri River (above Canyon Ferry)- This river has been great for large fish from spawning runs out of the reservoir, however, large fish kill this year may have affected this. We won't know until March.

Bear Lake- Good tubing. Damsel and Dragon Fly Nymphs can be great on any given day once the ice is out.

THE BIGHORN RIVER

The early spring fishing on the Bighorn really takes off around the first part of April when the first Baetis hatches begin to appear and the dry fly fishing can be superb. Midge hatches also interest the fish if the water level is not too high. Since the river temperature in the spring is much colder than the Madison or the Yellowstone, the spring fishing on the Bighorn is generally not good until the end of March and through April, when the water temperature rises above 40 degrees. The large deep lake above Yellowtail Dam keeps the water temperature down in the 36-38 degree range through the end of March. It is possible to catch a few fish on nymphs during these early months but the fishing is not good and the fish are sluggish.

Heavy Baetis hatches occur from mid-April through the latter part of May and provide some outstanding dry fly fishing. There are few anglers on the river at this time compared to the summer, with the exception of the weekends when the Billings crowd hits in full force. Once the spring Baetis hatches end in late May, the fishing is not nearly as good. June seems to be a slow month there as the water temperature is still fairly low and the fish haven't yet begun to feed heavily on nymphs and scuds, nor have any of the other insect hatches started. The Bighorn has no early caddis hatches like we do on the Madison or Yellowstone. These don't begin until July there, and the fishing really picks up in early July and is excellent right on through mid-September or so.

George Anderson has a tackle shop and guide service in Livingston, MT. In addition to knowing all of the waters in that area, he has been a leader in learning where and how to fish the Bighorn. He has created several effective fly patterns for the large trout in this river.

THE UPPER MISSOURI DRAINAGE

I have enclosed a brochure in this mailing from "The River's Edge" located in Bozeman, MT. I felt that providing information in this issue of our newsletter on the Helena area, Bozeman area, and the Bighorn, might help you find some interesting fishing out of the areas that are being detailed by outdoor writers.

THE YELLOWSTONE AREA AND BOOKS

You will find a flier enclosed on a new book to be available in April, with photographs by Dan Callaghan and text by Charles Brooks on the major streams in the Yellowstone Park area. I have not seen any of the prepublished materials, but I can assure you that the photography will be superb and a great collection for anyone who loves the area as I do.

Also available sometime this summer will be a book titled "A Guide to Fishing Montana". I understand that some information on fishing in Yellowstone Park will also be included in this book. I was assured that it would not give detailed instructions on exact fishing spots, but rather acquaint the angler with the character of the streams, the best time of the season, and the best times during the day. This allows the

angler the opportunity to learn about favorite spots on his own, and protects against congregating fishermen on all the so-called "hot spots".

These books should be in your favorite specialty shop priced in hard cover at \$12.95, and soft cover at \$8.95.

The "Angler's Guide to Montana" is written with information gathered from a number of dedicated anglers intimately acquainted with the waters discussed. Again, I have not read the text as yet.

FLY FISHING TIP

When I started flyfishing about 1937-38, it didn't require much skill to consistently catch trout and of course lots of whitefish. As years have gone by, the trout have learned alot. I can't say that for the whitefish. Fishermen have learned alot, too, but we also forget old methods as we get involved in "matching the hatch".

When there are alot of trout competing for food in fast, rocky pocket water streams, trout will often take large attractor flies that represent nothing in the stream.

This last season I fished with W.R.C. member Dick Blumershine. Dick and his wife, Bert, visit the Yellowstone area the month of September every year. At this time of season, the nights are getting cold. Hatches are shorter and some of the hatches disappear. Dick and Bert and their fishing friends, Red Lang and John Basmijian, would laughingly tell me, when I asked how they were doing and what they had done well with, "Number 10 Royal Wulff!" Not matching the hatch resulted in excellent dry fly fishing. Dick proved it to me the day we fished the Madison River between Reynolds Pass and various sections to Varney Bridge.

The special regulations on the Madison in this area have created heavy populations of trout like the old days. So methods that worked 20-30-40 years ago, are back in style again.

HAUTE CUISINE

Last November Pat and I spent several days fishing the Big Hole, Beaverhead, and small streams in that area. We stayed in Dillon, Montana, where we discovered the Bannock Room.

The decor is early Western frontier cattle days, as Dillon itself still is. The food is sumptuous western cattle ranch fare. Perfectly okay to dine with your western hat on.

After leaving Dillon early one morning, we stopped in Sheridan, Montana (about a forty-five minute drive). We chose the Sheridan Bar and Cafe because that seemed to be the only restaurant in town. Bacon and eggs, ranch-fried potatoes — just like they served on the ranch. The bacon is cured in Sheridan by the Madison Meat Company. Terrific!

SMITH RIVER

For a float trip to fish several days, the Smith offers unique experience. Access is limited to float fishing in most sections. Try to arrange for the early part of the season before low water.

We can provide you with an outfitter to contact who specializes in this particular trip. Food is reported to be excellent, and all details of the trip well attended to. Write or call for details.

FLOAT FISHING

Float fishing on the Madison River will be on the same sections this year as it was in 1983. From MacAtee Bridge to Varney Bridge, you must get out of the boat to fish.

The controversy over float fishing on rivers flowing through private lands in Montana has been in the courts for several years. On March 31, 1984, a hearing will be held by a legislative committee to hopefully draft legislation that will accommodate both the landowner and sportsman. We will report in the May newsletter.

STEELHEAD AND SALMON

Pat and I spent two weeks fishing the rivers on the Olympic Peninsula in the state of Washington and a river in Oregon for steelhead. The last two weeks of January, we had limited success, but we learned that the steelhead are there both winter and summer.

I fished in Washington with guide J.D. Love of Port Angelus, Washington. I had met J.D. as a guide when I fished in Alaska. I fished only with flies and the winter steelhead are tough to catch with flies. Lure fishermen were doing very well. J.D. and I will try it next September or October when flyfishing is best, he tells me.

J.D. Love spends summers guiding in Alaska with Bob Devito. Bob has a simple but excellent camp on a good river for a variety of salmon, rainbows, and grayling. If you would like additional information and any help in planning a trip with either of these men, let me know. I recommend them.

We also spent several days in Oregon with Doug and Jo Raines at their condo on the Oregon Coast. Their son Jeff floated us on a lovely stretch of river. Rainfall had raised the river and only lures were effective, but steelhead up to 10 pounds were being caught and also an occasional sea-run cutthroat.

The steelhead in the Washington rivers I fished are caught often enough to be authentic, 18 to 20 pounds. However, the Oregon rivers offer more fish at times, but smaller.

We hope to go back.

CHRISTMAS ISLAND

A small atoll in the Pacific 1300 miles south of Hawaii may be stretching the boundaries of our Western Rivers Club, but it has great fishing for bonefish on a fly. Doug and Jo Raines have a very successful travel business in Oregon. I asked Doug about Christmas Island, since after years of experience, there are few places on earth they do not know about, or have not arranged travel to. Doug admitted that I had done the impossible. I had failed the old masters and asked about a place he didn't know about.

Doug, however, researched Christmas Island carefully and supplied me with information on how best to get there. I have also been in contact with people that first discovered the bonefish in the Pacific. "Sports Illustrated" had a story on this last December. We have details if requested.

CLUB PINS

There are still Club Pins available to Charter Members. This is a very handsome pin designed for us by artist Pam Lanza of Bozeman, MT. The cost is \$6.50 ppc.

PAT AND BUD

We had a delightful winter break from mid-January to early March, fishing along the Washington and Oregon Coasts, then a month of surf and sand in Maui, Hawaii. Pat gets brown and I get a few freckles and sunburn.

Just prior to leaving on our break, I accepted the chairmanship of the International Flyfishing Center Committee. The center is being developed in the historical Union Pacific dining room in West Yellowstone, MT. It will become my function to help those dedicated to getting the Center open for the coming summer season.

The program is finally moving well towards a Center featuring tackle displays, museum, art of angling displays, fly tying and casting demonstrations and instruction, seminars, etc. It is going to be a great place to visit. If you would like to make a cash contribution to help all this come true, send it to:

Mrs. Esther Simon, Executive Director
4628 S. Ward Way
Morrison, CO 80465

Sorry for being almost a month late with this newsletter.



Volume 2
Number 5

NEWSLETTER

May
1984

PAT LILLY

Pat passed away April 14. She put up a tough fight with lung cancer. Following surgery and radiation, we were quite hopeful that it would disappear. Last August the doctors found the cancer had spread.

Despite the brief time the doctors allotted her, she continued to live every day as happily as she could and did not utter one complaint. We spent 37 years together with so many happy days, teaching our children about the out-of-doors and pleasures of flyfishing, and of course being in the flyfishing business for 30 years. Pat and I had many wonderful times.

We were grateful that Pat did not suffer too long. We returned from our visit to Hawaii March 5. She was beginning to experience considerable difficulty breathing, so a few days later she was put on oxygen. On April 12, she entered the hospital and the last 24 hours were very difficult for her. Her strength was tremendous, and our family relied heavily on her. Her epitaph is "Our Strength."

THE WESTERN RIVERS CLUB

Pat insisted that I continue with the club. We had so much fun the last two years exploring new places and gathering information to share with club members that it will be difficult to do alone, but I will do so.

THE FIREHOLE RIVER

The general fishing season opened Saturday, May 26 in Yellowstone Park. I fished the Firehole Saturday and Sunday. It snowed and rained hard off and on all day Saturday. Sunday it did not storm, but it was quite chilly when the wind blew across the snow-covered peaks. However, fishing with nymphs and streamers I enjoyed a good number of browns and rainbows, 10-14 inches in length. I released one brown in the 18-20 inch category. Two anglers I met had also released a brown trout of that size.

This early season action confirms our forecast that colder than average water temperature is resulting in more insect life, better hatches, and an increase in the numbers and size of trout in the Firehole. Lower water temperature will mean longer hatch periods as well as extended fishing (into July) before the water is too warm.

All of this is very encouraging for those who are particularly fond of the Firehole. I'll report to you on this again in the August newsletter.

THE YELLOWSTONE RIVER

We reported in the February 1984 newsletter that special regulations will be in effect on this river, in the sections south of Livingston, Montana, as of this season. I will be fishing this river late summer through next spring, as I have done for many years. The prospects for tremendous improvement are very promising.

My son Greg and I fished this area May 10. A caddis hatch is always heavy at that time, but usually the river is high and muddy. This year, a late spring kept the water low and clear. The hatch started mid-afternoon, with every trout in the river rising. Fishing couldn't have been better.

The hatch was on the river from about May 3 to May 10. If that occurs again soon, don't miss it.

WATER CONDITIONS

You no doubt have read and heard about late spring snow storms in Idaho, Montana, and Wyoming this year. Some drainages were affected, with rivers and streams overflowing. Most of the rivers will be later than normal, unless it turns hot and stays that way for a period of time. This will cause salmon fly hatches to be a few days to a week later than normal. Most other hatches and rivers will be on schedule, but flows will be above normal.

A NEW RESORT

Next week I am going to visit Grouse Mountain Lodge at Whitefish, MT. The name "Whitefish" might conjure up some interesting thoughts about what the fishing is like there. The Rocky Mountain whitefish is found in many western rivers as a native species, and this is true here also. There is fishing too for native cutthroat rainbow and dolly varden.

Besides fishing, there is spectacular mountain beauty there. Nearby is Glacier National Park. Glacier does not claim any fame as a fishing park, although there are a number of lakes with good trout fishing. Hikers can reach some back country areas that offer a chance for trout too.

Whitefish is best known as a first-rate ski area. The summer offers outdoor activities at the new Grouse Mountain Lodge, too, that include golf, tennis, riding, and more. I'll tell you more in the next newsletter.

NEW BOOK FROM MIKE SAMPLE

A Guide to Fishing Montana, edited by Mike Sample, should provide some fresh information on many streams in Montana. I can assure you that Mike has made every effort to provide accurate information. Awaiting its publication in midsummer, Mike tells me the following:

"The book has 20 chapters. The bulk of the book (16 chapters) covers the major trout rivers of Montana and their important tributaries. Two other chapters describe the 109 biggest and best lakes in either narratives or charts. The last two chapters cover Yellowstone and Glacier National Parks. With 85 photos, 24 maps, 256 pages, 6 x 9 inches, paper, \$7.95.

We will have the books about June 20th. They will be available in many sporting goods and book stores shortly thereafter. To my way of thinking, the best thing about the book is that it does not rely on any one person's opinion. When I wrote out the acknowledgements, I found I had consulted more than 60 guides, biologists, and long-time anglers."

INTERNATIONAL FLY FISHING CENTER

Progress on the center is going well. The old Union Pacific dining room has been declared a national historic building. It will open to public view in late June, featuring a museum, art gallery, angling library, audio-visual center, exhibits, fly casting and fly tying instruction demonstrations.

The art gallery is named in memory of Pat Lilly and will eventually house a permanent collection of international angling art. In addition, gallery sales of angling prints will be highlighted.

The Grand Opening of the center is August 15, during the annual meeting of the International Federation of Fly Fishers at West Yellowstone.

Bud



Volume 2
Number 6

NEWSLETTER

August
1984

AMBASSADORS

The governor of Montana recently appointed 165 business men and women as ambassadors for his "Build Montana" program. Each ambassador is charged with helping business executives learn more about Montana as a place to locate a new business or expand into.

My function is more specific. I was named as chairman of the "Catch and Release Fly Fishing Tours" for visiting executives. The state of Montana will host 12-16 executives providing meals, lodging, tackle, and fishing guides for three days of fishing. Along with other committee members I will be responsible for all the planning and execution of the "tour".

The fact that the governor has endorsed a "Catch and Release" tour has put an indelible stamp on Catch and Release as a management tool on Montana trout waters.

CATCH AND RELEASE

This season has confirmed the great response of trout in the Madison River to the 30 mile section of release waters and to reduced limits in other sections. The problem this season has been heavy fishing pressure caused by other rivers being high and muddy. The Madison not only has more trout, but strong, well-conditioned trout.

Also, I can report that the cutthroat in the catch and release section on the Yellowstone river in Yellowstone Park continue to get bigger. The cutthroat is not a strong fighter until it gets 18 inches and larger in this river. These larger cutthroat are strong and have stamina. Two weeks ago I had a day in which I released a number of cutthroat that size. I felt I had all the sport I could from those fish.

FIREHOLE RIVER

For those of you planning to fish the Yellowstone area this fall, don't overlook the Firehole. We found the fish to be fat and sassy in June and, as days turn cooler, the hatches will appear again for good dry fly action through the months of September and October.

LATE SEASON HIGH WATER

A number of western rivers have had little fishing pressure as they remained swollen by late snow melt and heavy rains. The Yellowstone, Gallatin, Jefferson, Missouri, and Lamar are just now clearing and dropping to good fly fishing conditions.

OUR SILVER GATE EXPERIENCE

Last week, two good friends from Bozeman, Ed Hines and Cory Dogterum, joined me for a fishing outing. We stayed at Silver Gate, the northeast entrance to Yellowstone Park (see Dan Baily map). We had hoped to fish the Lamar one day, but heavy rains again had kept it muddy. In fact, it is going to be prime soon as no one has fished it yet. Grasshoppers will be good in September.

We fished lower Slough Creek on two occasions and found no hatches as the water was chilled by rains. An accidental lock-up to an over-curious cutthroat happened here and there, but large cutthroat and hybrid rainbow are available. We plan to return.

The Yellowstone in the Park threw us a curve. I mentioned my success there several weeks ago, but it was not repeated. Those large cutthroat were feeding and we fished to them all day without ever finding the answer. Fortunately, we landed a few, but left somewhat stunned.

This does occur and when it does, cutthroat demonstrate their sophistication, too.

Silver Gate still remains a quiet entrance to Yellowstone. The traffic was light, but the wildlife in the Park was heavy in the northeast portion. The Lamar Valley has such good grass because of all the rain, so the bison had not moved to the higher meadows. We saw several hundred. We also saw a grizzly sow and cub.

You no doubt have heard of the most recent grizzly episode in the area of Pelican Creek of Yellowstone. A hiker was dragged from her tent and the grizzly ate part of her. The bear we saw could have been that bear.

INTERNATIONAL FLY FISHING CENTER

We are very proud of what has been accomplished so far on the Center. The old Union Pacific dining room that houses the Center has undergone considerable restoration as a historic building. It is all operable and the public is allowed to tour the building without cost. The museum is in place, but still quite limited; the Pat Lilly Art Gallery is really stunning and the artist response is tremendous.

Several angling library collections have been willed to the Center. The original room assigned as the library is already becoming crowded.

The Grand Opening is scheduled for August 15. At 2:00 p.m. of that afternoon the ribbon cutting ceremony will be held. The governor of Montana, and the superintendents of Teton Yellowstone, and Glacier National Parks will be the principals. That evening we will have a dinner seating about 700. Bobby Knight, our Olympic basketball coach, will be the speaker. I promised to take him fishing.

Hope you are enjoying a good summer season.
Bud Lilly



Volume 4
Number 10

February
1988

NEWSLETTER

2007 Sourdough Road
Bozeman, MT 59715

FISHING PROSPECTS 1988

Weather has been a concern for western waters this past year and it appears that may continue to be a problem for the coming season. At this time, snowpack in most Montana drainages is 60-80% of normal. For Montana this would make predictions for relatively low water again this year. Idaho and Wyoming, as well as Colorado, have good winter snowpacks.

I would plan to fish most rivers as early as possible, except larger rivers late summer and early fall.

The Big Hole River in Montana will continue to improve as it responds to special regulations. This was demonstrated last season. Check out the Beaverhead in Montana. Float fishing is best. Although the numbers of trout are not as great, there are some real trophies in that section of the Beaverhead downstream from the town of Dillon.

Dupuis spring creek south of Livingston is a private fee fishing stream that is being upgraded by extensive stream improvement. Put it on your list.

The South Fork of the Snake in Idaho had a good year with low water last year. I would consider it again this year.

Another large river to take seriously is the Clark Fork of the Columbia from Deer Lodge to Superior, Montana. That covers a lot of water and offers great river float fishing.

ENCLOSURES

For your information I am enclosing a brochure on the Greater Yellowstone Coalition. Many of you have made gifts to this organization and I can assure you their efforts to protect the Yellowstone ecosystem are paying off. This year saw a number of moves by the U.S. Forest Service in response to the coalition to stop or reduce clearcut logging in a number of locations.

Shirley Cleary offers a unique way to help you preserve a magic moment on a western river, with her ability to capture the feeling of western angling on canvas.

The Broken Spur Motel located in Three Forks, Montana offers clean, comfortable and very adequate accommodations in a great little western town. Three Forks is minutes from the Madison, Gallatin and Jefferson rivers, as well as several good small creeks. There is also a new nine-hole golf course. For good food try "Johnathan's".

Speaking of food, don't miss Jay Bentley's new location on the Gallatin River near Big Sky, Montana. Jay has proven how good his food is with the "Continental Divide" in Ennis. He'll continue to have that restaurant as well as the new one.

GUEST RANCHES

I have previously mentioned the Mountain Sky Ranch and Elk Canyon Ranch. Now the Bar N Ranch near West Yellowstone is also offering a great ranch experience. This is an old family ranch with new emphasis by the prodigal son. They have some special professional seminars of interest. Write me for more on these ranches.

BUD LILLY

The Bud Lilly Trout Shop is under new ownership. Jim Criner took over the shop last spring and did a very good job of restoring the shop to its old ways. Jim has remodeled, adding a fly tier's lounge downstairs and several innovations to make the atmosphere interesting and pleasant.

My book released last July is doing well and a second, "A Trout's Best Friend," will be available in April or May. This book has the fishing stories that I hope others will find fun and interesting.

I have my outfitter's license again and will be available for guided fishing trips. I don't do river float trips. I will however show you how I think a day on the river can be fun and exciting . . . \$250 per day . . . 1 to 3 anglers.

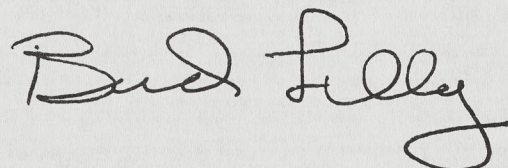
WESTERN RIVER PROPERTIES

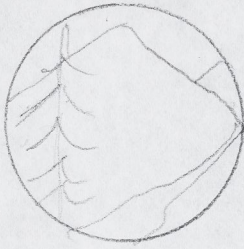
I travel around with my wife Esther as she shows ranches and properties to prospective buyers, and I'm amazed at the number and quality of these properties. Many ranchers must sell. Prices are not give-a-way, but it looks like a good time to invest in ranches to have a "fishing hole" and to see values relate to recreational uses. If you or your friends want to talk to Esther, call (406) 587-9566.

INFORMATION

Feel free to call me anytime . . . (406) 586-5140. If I'm not in just leave a message and I'll get back to you. Esther and I are going to the Florida Keys and will return March 3rd and get back to serious "western" fishing soon thereafter.

Sincerely,





Volume 3
Number 8

NEWSLETTER

May
1987

Avant Garde

INTRODUCTION

Some of you receiving this newsletter are former members of the "Club" when it was first established in 1983. With an interruption of about two years I am reactivating the Club and offering it to new members with hopes of old members rejoining.

The primary purpose of the Western Rivers Club is to offer you fishing information. You will receive newsletters and bulletins concerning fishing in general and specific information when it best applies. You are welcome to write or call me for any information regarding the fishing or help in planning your trip, making reservations for guides, accommodations or whatever.

In addition, I will be sending you up-to-date information on fishing regulations, fisheries management news on recent developments in stream access, fishing tales, where I have found good food, outstanding places to stay, upcoming special events you might want to combine with fishing, suggest outstanding fishing trips (such as river float or back country), and keep you posted on all angling and related activities to make your western fishing "the total experience."

BACKGROUND

Since retiring from the fishing tackle business at West Yellowstone, I have made Bozeman, Montana my base. This has given me the latitude to devote all of my time to fishing the waters of Montana, Idaho, Wyoming, steelhead streams in Washington and Oregon, a trip to Alaska and fishing in Mexico.

I can personally provide you with the best information available or refer you to reliable sources to answer your questions and provide you help in your plans.

I do not accept commissions from concessionaires or promote anyone's product or services, other than try to help you find the best and most reliable

I will be available anytime to receive your calls or respond to your letters. When I'm fishing, you will have to talk to my answering service, but I'll get back to you as soon as I can.

GUIDING

Following World War II river floating with air force rubber rafts and river boats began to gain in popularity. I was among those early outfitters who promoted float fishing and spent many years conducting float fishing trips as a guide and outfitter. It is a tremendous way to cover the larger western rivers.

However, I have always preferred to wade and fish. I have spent the last few years finding all of the excellent areas, sections, side channels of the western rivers that are a pleasure to wade and fish. It would be my pleasure to show them to you as well.

I am arranging to again offer my services as a guide and outfitter. If you would like a day or so with me, I am now available by reservation.

LADIES ONLY

It was my great pleasure to be one of the first to "coin" the ladies-only trip for fly fishing. Throughout my business career in fly fishing I have always tried to include ladies in offering the best equipment, instruction by ladies for ladies and information that was particularly for ladies from the women in my family and staff. We want to continue to do that.

My wife, Esther, is a professional fly fisher. She is currently successfully

involved in real estate with an emphasis on ranches, recreational properties and homes, but with some time to fish, as well as raise two children ages 3 yrs. and 6 yrs. If the lady members of our club have any questions that she can help in providing answers for, she will gladly do so.

Esther will be writing about real estate opportunities in the newsletters. If you have any interest or questions about properties, please feel free to contact Esther.

BUD LILLY'S BOOK

Last year my friend, the writer Paul Schullery, collaborated with me in writing a book "Bud Lilly's Guide to Western Fly Fishing." We fished and talked and compiled a guide to the western rivers on when, where and how to fish them. We talked about seasons, flies, tackle, selecting a good guide and much more. In fact, so much more that a second book "A Trout's Best Friend" will be offered next year.

The first book will appear in May. Autographed copies will be offered by Bud Lilly's Trout Shop at West Yellowstone and by the River's Edge in Bozeman.

Bud Lilly's Trout Shop has just recently been acquired by new owners and offers a fresh, newly decorated and stocked shop with much promise from the good new owners. Jim Kriner and his wife are anxious to do a service for all visiting anglers.

FISHING FORECAST

Many western tackle shops now offer annual fishing reports on their areas and they are often valuable in ⁵⁵ accessing conditions for the coming season. This year the streams in the Greater Yellowstone Eco-system are all facing below normal

winter snow pack that provides the water for the rivers. Expect low water conditions. Heavy rains can change this so watch to see if this could change your time to visit a particular river.

I purposely used the term "Greater Yellowstone Eco-system." This is the area of national forests and rivers surrounding and including Yellowstone National Park that offers some of the greatest fly fishing for trout on earth. I will talk more about this in future newsletters.

IN THE MEDIA

Turner Broadcasting Company will air a film on May 3 called "Portrait of America." It's a one-hour program featuring Montana. This is one in a series on all our states. Cal Dunbar of West Yellowstone and I appear in some fishing scenes. The T.V. program "20/20," with Hugh Downs and Barbara Walters, has asked me to do a fishing clip on that show in late summer.

National Geographic recently dispatched a writer to meet with many of us associated with the Greater Yellowstone Eco-system. A book about the ecology of the area is planned to be written this summer.

MEMBERSHIP

I hope I have outlined an interesting and informative membership program for you. Please call or write me if you have questions. I hope you will quickly return the membership application.

WESTERN RIVERS CLUB
2007 SOURDOUGH ROAD
BOZEMAN, MT 59715
Tel-406-586-5140

Please enroll me in the Western Rivers Club for one year
from the date on this application.

My check for \$25.00 enclosed for newsletters, bulletins
and fishing information.

My check for \$50.00 enclosed for newsletters, bulletins,
information and full trip planning service.

My check for \$50.00 deposit enclosed for fishing with
Bud _____ days on _____ at \$250.00 per
day. Lunch and transportation provided.

Total _____

Name _____

Address _____

Telephone _____

Date _____

(Signed) _____

Volume 3 NEWSLETTER
Number 8

MAY
1987

Introduction

Some of you receiving this newsletter are former members of the "Club" when it was first established in 1983. With an interruption of about two years I am reactivating the Club and ~~am~~ offering it to new members ~~and~~ with hopes of old members rejoining.

The primary purpose of the club is to offer ^{you} fishing information. You will receive newsletters and bulletins concerning fishing in general and specific information when it best applies. You are welcome to write or call ^{us} for any information regarding the fishing or help in planning a trip, making reservations for guides, accommodations or whatever.

In addition, ^{we} will be sending you up-to-date information on fishing regulations, fisheries management news on recent developments in stream access, fishing tales, where we have found good food, outstanding places to stay,

✓ up coming special events you might want to combine with fishing, suggest outstanding fishing trips (such as river float or backcountry) and keep you posted on all angling and related activities to make your western fishing "the total experience"

Background

Since retiring from the fishing tackle business at West Yellowstone, I have made Bozeman, Montana my base. This has given me the latitude to devote all of my time to fishing the waters of Montana, Idaho, Wyoming, steelhead streams in Washington and Oregon, a trip to Alaska and fishing in Mexico.

I can personally provide you ^{with} the best information available, or refer you to the best sources to answer ^{your} questions and provide them you help in your plans.

reliable? ✓

I do not accept commissions from concessionaires or promote anyone's product or services, other than try to help you find the best and most reliable what? spots rivers to fish,

✓ I will be available ~~at~~ anytime to receive your calls or respond to your letters. When I'm fishing, you will have to talk to my answering service, ^{but} and I'll get back to you as soon as I can.

Guiding

Following world war II river floating with air force rubber rafts and river boats began to gain in popularity. I was among those ^{who} early outfitters that promoted float fishing and spent many years conducting float fishing trips as a guide and outfitter. It is a tremendous way to cover the larger western rivers.

However, I have always preferred to wade and fish. I have spent

the last few years finding all of the excellent areas, sections, side channels of the western rivers that are a pleasure to wade and fish. It would be my pleasure to show them to you as well.

I am arranging to again ~~to~~ offer my services as a guide and outfitter. If you would like a day or so with me, I am now available by reservation.

Ladies Only

It was my great pleasure to be one of the first to "coin" the ladies only trip for fly fishing. ~~and~~ throughout ~~my~~ business career in fly fishing I ^{have} always tried to include ladies in offering the best equipment, instruction by ladies for ladies, and information that was particularly for ladies from the women in my family and ~~the~~ staff. We want to continue to do that.

My wife, Esther, is a professional fly fisher. She is currently (very) successfully involved in real estate with an emphasis on ranches, recreational properties and homes, but with some time to fish, as well as raise two children ages 3 yrs and 6 yrs.

a little awkward ^{have} Any questions that she can help in providing answers for ^{if the} ~~dad~~ members of our club she will gladly do so.

Esther will be writing about real estate opportunities in the newsletters. If you have any interest or questions about properties, please feel free to contact Esther.

Bud Lilly's Book

Last year my friend, the writer Paul Schullery collaborated with me in writing a book "Bud Lilly's Guide to Western Fly Fishing". We fished and talked and compiled a guide to the western rivers

on when where and how to fish them. We talked about seasons, flies, tackle, selecting a good guide and much more. In fact, so much more that a second book "A Trout's Best Friend" will be offered next year.

The first book will appear in May. Autographed copies will be offered by Bud Lilly's Trout Shop at West Yellowstone and ^{by} The River's Edge in Bozeman.

Bud Lilly's Trout Shop has just recently been acquired by new owners and offers a fresh, newly decorated and stocked shop with much promise ~~and~~ ^{from the} good new owners. Jim Kriner and his wife[?] are anxious to do a service for all visiting anglers.

Fishing Forecast

Many western tackle shops now offer

annual fishing reports on their areas
✓² and they ^{are} often good and valuable in
^{accessing} assessing conditions for the coming
season. This year the streams in the
Greater Yellowstone Eco-system
all are facing below normal winter
snow pack that provides the water
for the rivers. Expect low water
conditions. Heavy rains can change
this so watch to see if this could
change your time to visit a particular
river.

I purposely used the term "Greater
Yellowstone Eco-system". This is
the area of national forests and
rivers surrounding and including
Yellowstone National Park that
offers some of the greatest
fly fishing for trout on earth.
I will talk more about this in future
news letters.

In the Media

Turner Broadcasting Company will air

✓ on May 3 a film ~~on their T.V. Channel~~
 called "Portrait of America". ^{It's} A one-
 hour program featuring Montana.
 This is one in a series on all our
 states. Cal Dunbar (of West Yellowstone)
 and I appear in some fishing scenes.
 The T.V. program "20/20" with
 Hugh Downs and Barbara Walters,
 has asked ^{me} to do a fishing clip on
 that show in late summer.

National Geographic recently
 dispatched a writer to meet with
 many of us associated with the
 Greater Yellowstone Eco-System.
 A book about the ecology of the
 area is planned to be written
 this summer.

Membership

I hope ^I we have outlined an interesting
 and informative membership program
 for you. Please call or write ^{me} if you
 have questions. I hope you will quickly
 ✓ return the membership application.

WESTERN RIVERS CLUB
2007 SOURDOUGH ROAD
BOZEMAN, MT 59715
Tel-406-586-5140

Please enroll me in the Western Rivers Club for one year from the date on this application

My check for \$25⁰⁰¹⁵ enclosed for newsletters, bulletins and fishing information.

My check for \$50⁰⁰¹⁵ enclosed for newsletters, bulletins, information and full trip planning service.

My check for \$500⁰⁰ deposit¹⁵ enclosed for fishing with Bud _____ days on _____ at \$250⁰⁰ per day.

Lunch and transportation provided.

Name _____ Total _____

Address _____

Telephone _____

Date _____

Signed _____