



**far
east
trade
service
inc.**

BRANCH OFFICE IN SAN FRANCISCO

555 MONTGOMERY STREET
SUITE 603
SAN FRANCISCO, CA 94111-2564
U. S. A.

TEL: (415) 788-4304
TELEX: 4974157 FETS SF
FAX: (415) 788-0468

S-US-1648
May 31, 1988

Mr. Bud Lilly, Tour Chairman
Montana Ambassadors
Department of Commerce
1424 Ninth Avenue
Helena, Montana 59620

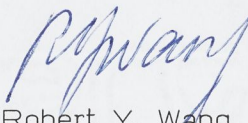
Dear Mr. Lilly:

Thank you for your kind letter of May 26, 1988, regarding the Montana Ambassadors Catch and Release Fly Fishing Tour. I have just written to both Governor Schwinden and Mr. Keith Colbo to confirm my acceptance and acquaint them with my flight schedule for the tour.

I will arrive in Butte from Salt Lake City at 1:00 p.m. on June 24, 1988, on Delta Flight 1808, and will leave on June 27 at 1:40 p.m., again from Butte, on Delta Flight 1807.

I truly appreciate the graciousness of everyone involved and look forward to the tour and to learning more about Montana, its fishing, and its leaders. Thanks again.

Yours truly,


Robert Y. Wang
Director

aw



State of Montana
Office of the Governor
Helena, Montana 59620
406-444-3111

TED SCHWINDEN
GOVERNOR

May 6, 1988

Whit Hawkins, Sr. Vice President for Marketing
Delta Airlines, Inc.
General Office
Hartsfield International Airport
Atlanta, GA 30320

Dear Mr. Hawkins:

On behalf of your colleague, John Wilson, I wish to extend to you an invitation to join us in Montana for our fourth annual "Catch & Release Fly Fishing Tour," June 24-27, 1988. Sponsored by the Montana Ambassadors, a group of 180 top business leaders, the tour is designed as a special three days of flyfishing for leading, corporate executives and as a chance to get acquainted with Montana. Our guest list is limited to seven.

The setting for the tour is The Complete Fly Fisher, a flyfishing lodge situated on the bank of the Big Hole River in southwestern Montana. We will provide our guests with lodging, food, personalized guide service, equipment and plenty of opportunities to catch some of Montana's famous wild trout. All you need to provide is your transportation to and from Montana.

We consider this an excellent way for you to get to know Montana. The atmosphere will be informal and relaxed with primary emphasis on trout fishing.

I will be calling you soon to discuss the tour. I hope you will be able to join us.

Best personal regards,

A handwritten signature in cursive script, appearing to read "Ted Schwinden".

TED SCHWINDEN
Governor

cc: Bud Lilly, Tour Chairman



State of Montana
Office of the Governor
Helena, Montana 59620
406-444-3111

TED SCHWINDEN
GOVERNOR

May 6, 1988

John Reade
Location Director
Walt Disney Pictures
500 South Buena Vista St.
Burbank, CA 91521

Dear Mr. Reade:

On behalf of your colleagues, Tom Staples and Louis Robinson, I wish to extend to you an invitation to join us in Montana for our fourth annual "Catch & Release Fly Fishing Tour," June 24-27, 1988. Sponsored by the Montana Ambassadors, a group of 180 top business leaders, the tour is designed as a special three days of flyfishing for leading, corporate executives and as a chance to get acquainted with Montana. Our guest list is limited to seven.

The setting for the tour is The Complete Fly Fisher, a flyfishing lodge situated on the bank of the Big Hole River in southwestern Montana. We will provide our guests with lodging, food, personalized guide service, equipment and plenty of opportunities to catch some of Montana's famous wild trout. All you need to provide is your transportation to and from Montana.

We consider this an excellent way for you to get to know Montana. The atmosphere will be informal and relaxed with primary emphasis on trout fishing.

I will be calling you soon to discuss the tour. I hope you will be able to join us.

Best personal regards,

A handwritten signature in cursive script, appearing to read "Ted Schwinden".

TED SCHWINDEN
Governor

cc: Bud Lilly, Tour Chairman



Department of Commerce, 1424 Ninth Avenue, Helena, Montana 59620. Telephone 406/444-3494

BOARD OF DIRECTORS

President — Jim Spring,
Chairman of the Board, Christian,
Spring, Sielbach & Assoc., Billings

First Vice-President — Dan Lambros,
Lambros Realty, Missoula

Second Vice-President — Gary Buchanan,
Account Executive, Merrill, Lynch, Pierce,
Fenner and Smith, Billings

Secretary — Keith L. Colbo, Director
Montana Department of Commerce,
Helena

Treasurer — George D. Anderson, CPA,
President, Anderson
ZurMuehlen & Co., Helena

Larry Geske, President,
Great Falls Gas Company
Great Falls

Edwin H. Jasmin,
President, Norwest Bank,
Helena

Maxine C. Johnson,
Missoula

Robert H. Lehrkind,
Assistant Vice President,
D. A. Davidson
Bozeman

Darrell "Bill" Martin,
Chairman of the Board,
Winter Sports, Inc.
Kalispell

Rick Sampsen
Farmer, Dagmar

Ray Thompson,
President, Semitool, Inc.,
Kalispell

N. "Tuck" Vosburg,
President, Pacific Hide & Fur
Great Falls

Marilyn F. Wessel,
Director of Communications,
Assistant to President
Montana State University
Bozeman

George Willett,
President, Showdown Ski Area
Neihart

May 6, 1988

Ray Tilman
3480 Hannibal
Butte, MT 59701

Dear Ray:

Your nominee, Koichiro (Kenny) Yoshino, has accepted Governor Schwinden's invitation to join us on the Ambassadors' Fourth Annual Catch & Release Fly Fishing Tour. I have sent him a letter encouraging him to make his travel arrangements and will follow-up with a phone call to counsel him on clothing, fishing equipment, etc.

For now, you should set aside Friday, June 24, through Monday morning, June 27. We are encouraging invitees to make departure arrangements for Monday morning. Friday afternoon will be dedicated to fly casting instruction and equipment fondling; Saturday and Sunday we will fish.

Please note that this year's event will be held at the Complete Fly Fisher, a fly fishing lodge on the banks of the Big Hole River southwest of Butte. We will be sending you more detailed information on the lodge and the event itself. If you have any questions, please feel free to call me at 586-5140. I will be in touch as arrangements progress.

Best wishes,

Bud Lilly
Tour Chairman

BL/bw



Department of Commerce, 1424 Ninth Avenue, Helena, Montana 59620. Telephone 406/444-3494

BOARD OF DIRECTORS

President — Jim Spring,
Chairman of the Board, Christian,
Spring, Sielbach & Assoc., Billings

First Vice-President — Dan Lambros,
Lambros Realty, Missoula

Second Vice-President — Gary Buchanan,
Account Executive, Merrill, Lynch, Pierce,
Fenner and Smith, Billings

Secretary — Keith L. Colbo, Director
Montana Department of Commerce,
Helena

Treasurer — George D. Anderson, CPA,
President, Anderson
ZurMuehlen & Co., Helena

Larry Geske, President,
Great Falls Gas Company
Great Falls

Edwin H. Jasmin,
President, Norwest Bank,
Helena

Maxine C. Johnson,
Missoula

Robert H. Lehrkind,
Assistant Vice President,
D. A. Davidson
Bozeman

Darrell "Bill" Martin,
Chairman of the Board,
Winter Sports, Inc.
Kalispell

Rick Sampsen
Farmer, Dagmar

Ray Thompson,
President, Semitool, Inc.,
Kalispell

N. "Tuck" Vosburg,
President, Pacific Hide & Fur
Great Falls

Marilyn F. Wessel,
Director of Communications,
Assistant to President
Montana State University
Bozeman

George Willett,
President, Showdown Ski Area
Neihart

May 6, 1988

Chase Hibbard
Box 835
Helena, MT 59624

Dear Chase:

Your nominee, Peter Weaver, has accepted Governor Schwinden's invitation to join us on the Ambassadors' Fourth Annual Catch & Release Fly Fishing Tour. I have sent him a letter encouraging him to make his travel arrangements and will follow-up with a phone call to counsel him on clothing, fishing equipment, etc.

For now, you should set aside Friday, June 24, through Monday morning, June 27. We are encouraging invitees to make departure arrangements for Monday morning. Friday afternoon will be dedicated to fly casting instruction and equipment fondling; Saturday and Sunday we will fish.

Please note that this year's event will be held at the Complete Fly Fisher, a fly fishing lodge on the banks of the Big Hole River southwest of Butte. We will be sending you more detailed information on the lodge and the event itself. If you have any questions, please feel free to call me at 586-5140. I will be in touch as arrangements progress.

Best wishes,

Bud Lilly
Tour Chairman

BL/bw



Department of Commerce, 1424 Ninth Avenue, Helena, Montana 59620. Telephone 406/444-3494

BOARD OF DIRECTORS

President — Jim Spring,
Chairman of the Board, Christian,
Spring, Sielbach & Assoc., Billings

First Vice-President — Dan Lambros,
Lambros Realty, Missoula

Second Vice-President — Gary Buchanan,
Account Executive, Merrill, Lynch, Pierce,
Fenner and Smith, Billings

Secretary — Keith L. Colbo, Director
Montana Department of Commerce,
Helena

Treasurer — George D. Anderson, CPA,
President, Anderson
ZurMuehlen & Co., Helena

Larry Geske, President,
Great Falls Gas Company
Great Falls

Edwin H. Jasmin,
President, Norwest Bank,
Helena

Maxine C. Johnson,
Missoula

Robert H. Lehrkind,
Assistant Vice President,
D. A. Davidson
Bozeman

Darrell "Bill" Martin,
Chairman of the Board,
Winter Sports, Inc.
Kalispell

Rick Sampsen
Farmer, Dagmar

Ray Thompson,
President, Semitool, Inc.,
Kalispell

N. "Tuck" Vosburg,
President, Pacific Hide & Fur
Great Falls

Marilyn F. Wessel,
Director of Communications,
Assistant to President
Montana State University
Bozeman

George Willett,
President, Showdown Ski Area
Neihart

May 6, 1988

Jay Wilson Preston
Ronan Telephone Company
312 Main Street S.W.
Ronan, MT 59864

Dear Jay:

Your nominee, Neil Hinchman, has accepted Governor Schwinden's invitation to join us on the Ambassadors' Fourth Annual Catch & Release Fly Fishing Tour. I have sent him a letter encouraging him to make his travel arrangements and will follow-up with a phone call to counsel him on clothing, fishing equipment, etc.

For now, you should set aside Friday, June 24, through Monday morning, June 27. We are encouraging invitees to make departure arrangements for Monday morning. Friday afternoon will be dedicated to fly casting instruction and equipment fondling; Saturday and Sunday we will fish.

Please note that this year's event will be held at the Complete Fly Fisher, a fly fishing lodge on the banks of the Big Hole River southwest of Butte. We will be sending you more detailed information on the lodge and the event itself. If you have any questions, please feel free to call me at 586-5140. I will be in touch as arrangements progress.

Best wishes,

Bud Lilly
Tour Chairman

BL/bw



Department of Commerce, 1424 Ninth Avenue, Helena, Montana 59620. Telephone 406/444-3494

May 6, 1988

Neil R. Hinchman
External Affairs Vice President
AT & T Communications
1875 Lawrence St., Room 1509
Denver, CO 80202

Dear Neil:

We are delighted that you have accepted our invitation to the Montana Ambassadors' Fourth Annual Catch & Release Fly Fishing Tour. We look forward to showing you one of Montana's finest trout streams.

As the event draws near, you will hear more from us regarding schedules, equipment and clothing needs, etc. For now, it might be wise to make your flight arrangements. Scheduled events will begin Friday afternoon, June 24, and conclude Sunday evening, June 26. It would be best to plan your departure for Monday, June 27.

The Complete Fly Fisher, headquarters for the event, is located at Wise River, about 30 miles southwest of Butte. Butte is served by Delta and Northwest Airline's commuter link. Bozeman, 80 miles east, is served by Delta, Northwest and Continental airlines. Once we know your schedule, we will take care of all ground transportation arrangements.

If you have questions please feel free to call me at 406-586-5140.

We call Montana "unspoiled and unforgettable." We are pleased that you can take time from your busy schedule to share it with us.

Best regards,

Bud Lilly
Tour Chairman

BL/bw
cc: Jay Wilson Preston



Department of Commerce, 1424 Ninth Avenue, Helena, Montana 59620. Telephone 406/444-3494

May 6, 1988

Peter C. Weaver, President
Fischer USA
242 Silver Hill
Concord, MA 01742

Dear Peter:

We are delighted that you have accepted our invitation to the Montana Ambassadors' Fourth Annual Catch & Release Fly Fishing Tour. We look forward to showing you one of Montana's finest trout streams.

As the event draws near, you will hear more from us regarding schedules, equipment and clothing needs, etc. For now, it might be wise to make your flight arrangements. Scheduled events will begin Friday afternoon, June 24, and conclude Sunday evening, June 26. It would be best to plan your departure for Monday, June 27.

The Complete Fly Fisher, headquarters for the event, is located at Wise River, about 30 miles southwest of Butte. Butte is served by Delta and Northwest Airline's commuter link. Bozeman, 80 miles east, is served by Delta, Northwest and Continental airlines. Once we know your schedule, we will take care of all ground transportation arrangements.

If you have questions please feel free to call me at 406-586-5140.

We call Montana "unspoiled and unforgettable." We are pleased that you can take time from your busy schedule to share it with us.

Best regards,

Bud Lilly
Tour Chairman

BL/bw
cc: Chase Hibbard



Department of Commerce, 1424 Ninth Avenue, Helena, Montana 59620. Telephone 406/444-3494

May 6, 1988

Koichiro (Kenny) Yoshino
Vice President & General Manager
C. Itoh (America) Inc.
One Denver Place
99 West 18th St., Suite 3060
Denver, CO 80202

Dear Kenny:

We are delighted that you have accepted our invitation to the Montana Ambassadors' Fourth Annual Catch & Release Fly Fishing Tour. We look forward to showing you one of Montana's finest trout streams.

As the event draws near, you will hear more from us regarding schedules, equipment and clothing needs, etc. For now, it might be wise to make your flight arrangements. Scheduled events will begin Friday afternoon, June 24, and conclude Sunday evening, June 26. It would be best to plan your departure for Monday, June 27.

The Complete Fly Fisher, headquarters for the event, is located at Wise River, about 30 miles southwest of Butte. Butte is served by Delta and Northwest Airline's commuter link. Bozeman, 80 miles east, is served by Delta, Northwest and Continental airlines. Once we know your schedule, we will take care of all ground transportation arrangements.

If you have questions please feel free to call me at 406-586-5140.

We call Montana "unspoiled and unforgettable." We are pleased that you can take time from your busy schedule to share it with us.

Best regards,

Bud Lilly
Tour Chairman

BL/bw
cc: Ray Tilman



Department of Commerce, 1424 Ninth Avenue, Helena, Montana 59620. Telephone 406/444-3494

May 26, 1988

Dwight Lee
Venture Capitalist
Robert R. Barker & Co.
630 Fifth Avenue
New York, NY 10111

Dear Dwight:

We are delighted that you have accepted our invitation to the Montana Ambassadors' Fourth Annual Catch & Release Fly Fishing Tour. We look forward to showing you one of Montana's finest trout streams.

As the event draws near, you will hear more from us regarding schedules, equipment and clothing needs, etc. For now, it might be wise to make your flight arrangements. Scheduled events will begin Friday afternoon, June 24, and conclude Sunday evening, June 26. It would be best to plan your departure for Monday, June 27.

The Complete Fly Fisher, headquarters for the event, is located at Wise River, about 30 miles southwest of Butte. Butte is served by Delta and Northwest Airline's commuter link. Bozeman, 80 miles east, is served by Delta, Northwest and Continental airlines. Once we know your schedule, we will take care of all ground transportation arrangements.

If you have questions please feel free to call me at 406-586-5140.

We call Montana "unspoiled and unforgettable." We are pleased that you can take time from your busy schedule to share it with us.

Best regards,

Bud Lilly
Tour Chairman

BL/bw
cc: John Oitzinger



Department of Commerce, 1424 Ninth Avenue, Helena, Montana 59620. Telephone 406/444-3494

BOARD OF DIRECTORS

President — Jim Spring,
Chairman of the Board, Christian,
Spring, Sielbach & Assoc., Billings

First Vice-President — Dan Lambros,
Lambros Realty, Missoula

Second Vice-President — Gary Buchanan,
Account Executive, Merrill, Lynch, Pierce,
Fenner and Smith, Billings

Secretary — Keith L. Colbo, Director
Montana Department of Commerce,
Helena

Treasurer — George D. Anderson, CPA,
President, Anderson
ZurMuehlen & Co., Helena

Larry Geske, President,
Great Falls Gas Company
Great Falls

Edwin H. Jasmin,
President, Norwest Bank,
Helena

Maxine C. Johnson,
Missoula

Robert H. Lehrkind,
Assistant Vice President,
D. A. Davidson
Bozeman

Darrell "Bill" Martin,
Chairman of the Board,
Winter Sports, Inc.
Kalispell

Rick Sampsen
Farmer, Dagmar

Ray Thompson,
President, Semitool, Inc.,
Kalispell

N. "Tuck" Vosburg,
President, Pacific Hide & Fur
Great Falls

Marilyn F. Wessel,
Director of Communications,
Assistant to President
Montana State University
Bozeman

George Willett,
President, Showdown Ski Area
Neihart

May 26, 1988

John Oitzinger
Oitzinger & Wiederspahn
P.O. Box 865
Helena, MT 59624

Dear John:

Your nominee, Dwight Lee, has accepted Governor Schwinden's invitation to join us on the Ambassadors' Fourth Annual Catch & Release Fly Fishing Tour. I have sent him a letter encouraging him to make his travel arrangements and will follow-up with a phone call to counsel him on clothing, fishing equipment, etc.

For now, you should set aside Friday, June 24, through Monday morning, June 27. We are encouraging invitees to make departure arrangements for Monday morning. Friday afternoon will be dedicated to fly casting instruction and equipment fondling; Saturday and Sunday we will fish.

Please note that this year's event will be held at the Complete Fly Fisher, a fly fishing lodge on the banks of the Big Hole River southwest of Butte. We will be sending you more detailed information on the lodge and the event itself. If you have any questions, please feel free to call me at 586-5140. I will be in touch as arrangements progress.

Best wishes,

Bud Lilly
Tour Chairman

BL/bw

P.S. Your expense for the weekend will be \$250.00, including meals, lodging, bar and guide service.



Department of Commerce, 1424 Ninth Avenue, Helena, Montana 59620. Telephone 406/444-3494

BOARD OF DIRECTORS

President — Jim Spring,
Chairman of the Board, Christian,
Spring, Sielbach & Assoc., Billings

First Vice-President — Dan Lambros,
Lambros Realty, Missoula

Second Vice-President — Gary Buchanan,
Account Executive, Merrill, Lynch, Pierce,
Fenner and Smith, Billings

Secretary — Keith L. Colbo, Director
Montana Department of Commerce,
Helena

Treasurer — George D. Anderson, CPA,
President, Anderson
ZurMuehlen & Co., Helena

Larry Geske, President,
Great Falls Gas Company
Great Falls

Edwin H. Jasmin,
President, Norwest Bank,
Helena

Maxine C. Johnson,
Missoula

Robert H. Lehrkind,
Assistant Vice President,
D. A. Davidson
Bozeman

Darrell "Bill" Martin,
Chairman of the Board,
Winter Sports, Inc.
Kalispell

Rick Sampsen
Farmer, Dagmar

Ray Thompson,
President, Semitool, Inc.,
Kalispell

N. "Tuck" Vosburg,
President, Pacific Hide & Fur
Great Falls

Marilyn F. Wessel,
Director of Communications,
Assistant to President
Montana State University
Bozeman

George Willett,
President, Showdown Ski Area
Neihart

May 26, 1988

John Oitzinger
Oitzinger & Wiederspahn
P.O. Box 865
Helena, MT 59624

Dear John:

Thank you for your help in planning the Fourth Annual Montana Catch & Release Fly Fishing Tour by nominating Atlee Mitchell Kohl of the Woodland Investment Company. Atlee was invited but unfortunately will not be able to attend this year.

Plans are progressing nicely for the Fourth Annual Tour and I feel the quality of the 1988 event will equal or surpass the very successful first three tours.

Again, thanks for your assistance in the tour and your interest in promoting Montana.

Sincerely,

Bud Lilly
Tour Chairman

BL/bw



Department of Commerce, 1424 Ninth Avenue, Helena, Montana 59620. Telephone 406/444-3494

BOARD OF DIRECTORS

President — Jim Spring,
Chairman of the Board, Christian,
Spring, Sielbach & Assoc., Billings

First Vice-President — Dan Lambros,
Lambros Realty, Missoula

Second Vice-President — Gary Buchanan,
Account Executive, Merrill, Lynch, Pierce,
Fenner and Smith, Billings

Secretary — Keith L. Colbo, Director
Montana Department of Commerce,
Helena

Treasurer — George D. Anderson, CPA,
President, Anderson
ZurMuehlen & Co., Helena

Larry Geske, President,
Great Falls Gas Company
Great Falls

Edwin H. Jasmin,
President, Norwest Bank,
Helena

Maxine C. Johnson,
Missoula

Robert H. Lehrkind,
Assistant Vice President,
D. A. Davidson
Bozeman

Darrell "Bill" Martin,
Chairman of the Board,
Winter Sports, Inc.
Kalispell

Rick Sampsen
Farmer, Dagmar

Ray Thompson,
President, Semitool, Inc.,
Kalispell

N. "Tuck" Vosburg,
President, Pacific Hide & Fur
Great Falls

Marilyn F. Wessel,
Director of Communications,
Assistant to President
Montana State University
Bozeman

George Willett,
President, Showdown Ski Area
Neihart

May 26, 1988

Louis Robinson
West Associates, Inc.
P.O. Box 1116
West Yellowstone, MT 59758

Dear Louis:

Thank you for your help in planning the Fourth Annual Montana Catch & Release Fly Fishing Tour by nominating John Reade of Walt Disney Pictures. John was invited but unfortunately will not be able to attend this year.

Plans are progressing nicely for the Fourth Annual Tour and I feel the quality of the 1988 event will equal or surpass the very successful first three tours.

Again, thanks for your assistance in the tour and your interest in promoting Montana.

Sincerely,

Bud Lilly
Tour Chairman

BL/bw



Department of Commerce, 1424 Ninth Avenue, Helena, Montana 59620. Telephone 406/444-3494

BOARD OF DIRECTORS

President — Jim Spring,
Chairman of the Board, Christian,
Spring, Sielbach & Assoc., Billings

First Vice-President — Dan Lambros,
Lambros Realty, Missoula

Second Vice-President — Gary Buchanan,
Account Executive, Merrill, Lynch, Pierce,
Fenner and Smith, Billings

Secretary — Keith L. Colbo, Director
Montana Department of Commerce,
Helena

Treasurer — George D. Anderson, CPA,
President, Anderson
ZurMuehlen & Co., Helena

Larry Geske, President,
Great Falls Gas Company
Great Falls

Edwin H. Jasmin,
President, Norwest Bank,
Helena

Maxine C. Johnson,
Missoula

Robert H. Lehrkind,
Assistant Vice President,
D. A. Davidson
Bozeman

Darrell "Bill" Martin,
Chairman of the Board,
Winter Sports, Inc.
Kalispell

Rick Sampsen
Farmer, Dagmar

Ray Thompson,
President, Semitool, Inc.,
Kalispell

N. "Tuck" Vosburg,
President, Pacific Hide & Fur
Great Falls

Marilyn F. Wessel,
Director of Communications,
Assistant to President
Montana State University
Bozeman

George Willett,
President, Showdown Ski Area
Neihart

May 26, 1988

Tom Staples
Int'l Trade Commission
Power Block Bldg., Suite #612
Helena, MT 59601

Dear Tom:

Thank you for your help in planning the Fourth Annual Montana Catch & Release Fly Fishing Tour by nominating John Reade of Walt Disney Pictures. John was invited but unfortunately will not be able to attend this year.

Plans are progressing nicely for the Fourth Annual Tour and I feel the quality of the 1988 event will equal or surpass the very successful first three tours.

Again, thanks for your assistance in the tour and your interest in promoting Montana..

Sincerely,

Bud Lilly
Tour Chairman

BL/bw



Department of Commerce, 1424 Ninth Avenue, Helena, Montana 59620. Telephone 406/444-3494

BOARD OF DIRECTORS

President — Jim Spring,
Chairman of the Board, Christian,
Spring, Sielbach & Assoc., Billings

First Vice-President — Dan Lambros,
Lambros Realty, Missoula

Second Vice-President — Gary Buchanan,
Account Executive, Merrill, Lynch, Pierce,
Fenner and Smith, Billings

Secretary — Keith L. Colbo, Director
Montana Department of Commerce,
Helena

Treasurer — George D. Anderson, CPA,
President, Anderson
ZurMuehlen & Co., Helena

Larry Geske, President,
Great Falls Gas Company
Great Falls

Edwin H. Jasmin,
President, Norwest Bank,
Helena

Maxine C. Johnson,
Missoula

Robert H. Lehrkind,
Assistant Vice President,
D. A. Davidson
Bozeman

Darrell "Bill" Martin,
Chairman of the Board,
Winter Sports, Inc.
Kalispell

Rick Sampsen
Farmer, Dagmar

Ray Thompson,
President, Semitool, Inc.,
Kalispell

N. "Tuck" Vosburg,
President, Pacific Hide & Fur
Great Falls

Marilyn F. Wessel,
Director of Communications,
Assistant to President
Montana State University
Bozeman

George Willett,
President, Showdown Ski Area
Neihart

May 26, 1988

Keith Colbo
Dept. of Commerce
1424 9th Avenue
Helena, MT 59620

Dear Keith:

Your nominee, Robert Y. Wang, has accepted Governor Schwinden's invitation to join us on the Ambassadors' Fourth Annual Catch & Release Fly Fishing Tour. I have sent him a letter encouraging him to make his travel arrangements and will follow-up with a phone call to counsel him on clothing, fishing equipment, etc.

For now, you should set aside Friday, June 24, through Monday morning, June 27. We are encouraging invitees to make departure arrangements for Monday morning. Friday afternoon will be dedicated to fly casting instruction and equipment fondling; Saturday and Sunday we will fish.

Please note that this year's event will be held at the Complete Fly Fisher, a fly fishing lodge on the banks of the Big Hole River southwest of Butte. We will be sending you more detailed information on the lodge and the event itself. If you have any questions, please feel free to call me at 586-5140. I will be in touch as arrangements progress.

Best wishes,

Bud Lilly
Tour Chairman

BL/bw

P.S. Your expense for the weekend will be \$250.00, including meals, lodging, bar and guide service.



Department of Commerce, 1424 Ninth Avenue, Helena, Montana 59620. Telephone 406/441-3494

May 26, 1988

Robert Y. Wang, Director
Far East Trade Service, Inc.
555 Montgomery Street, Suite 603
San Francisco, CA 94111-2564

Dear Robert:

We are delighted that you have accepted our invitation to the Montana Ambassadors' Fourth Annual Catch & Release Fly Fishing Tour. We look forward to showing you one of Montana's finest trout streams.

As the event draws near, you will hear more from us regarding schedules, equipment and clothing needs, etc. For now, it might be wise to make your flight arrangements. Scheduled events will begin Friday afternoon, June 24, and conclude Sunday evening, June 26. It would be best to plan your departure for Monday, June 27.

The Complete Fly Fisher, headquarters for the event, is located at Wise River, about 30 miles southwest of Butte. Butte is served by Delta and Northwest Airline's commuter link. Bozeman, 80 miles east, is served by Delta, Northwest and Continental airlines. Once we know your schedule, we will take care of all ground transportation arrangements.

If you have questions please feel free to call me at 406-586-5140.

We call Montana "unspoiled and unforgettable." We are pleased that you can take time from your busy schedule to share it with us.

Best regards,

Bud Lilly
Tour Chairman

BL/bw
cc: Keith Colbo



Department of Commerce, 1424 Ninth Avenue, Helena, Montana 59620. Telephone 406/444-3494

May 26, 1988

Dwight Lee
Robert R. Barker & Co.
630 Fifth Avenue
New York, NY 10111

Dear Mr. Lee:

On behalf of your colleague, John Oitzinger, I wish to extend to you an invitation to join us in Montana for our fourth annual "Catch & Release Fly Fishing Tour," June 24-27, 1988. Sponsored by the Montana Ambassadors, a group of 180 top business leaders, the tour is designed as a special three days of flyfishing for leading, corporate executives and as a chance to get acquainted with Montana. Our guest list is limited to seven.

The setting for the tour is The Complete Fly Fisher, a flyfishing lodge situated on the bank of the Big Hole River in southwestern Montana. We will provide our guests with lodging, food, personalized guide service, equipment and plenty of opportunities to catch some of Montana's famous wild trout. All you need to provide is your transportation to and from Montana.

We consider this an excellent way for you to get to know Montana. The atmosphere will be informal and relaxed with primary emphasis on trout fishing.

I will be calling you soon to discuss the tour. I hope you will be able to join us.

Best personal regards,

TED SCHWINDEN
Governor

cc: Bud Lilly, Tour Chairman

**OUTLINE OF EVENT
FOURTH ANNUAL CATCH & RELEASE FLY FISHING TOUR**

When: June 24-27 (Note: This is essentially a weekend event, with Friday afternoon arrival and Monday a.m. departure).

Where: Complete Fly Fisher, Big Hole River, 30 miles southwest of Butte. This is a deluxe fly fishing lodge, with complete guide service and gourmet meals. Guests will be limited to seven.

Transportation & Costs: Ambassadors pick up all costs except transportation to and from Montana (advise nominees that they would need to fly into Butte or Bozeman).

Purpose: To acquaint selected guests with Montana. Weekend will be relaxing, with emphasis on fishing. (Note: Guests need not be accomplished anglers; instruction and equipment available).

Bait for the Serious

Anglers in the Crowd: Given this year's date and location, we may catch the tail-end of the Big Hole's famous salmon fly hatch.

Finally: Try to get a commitment from them; tell them your call will be followed up with more detailed information if they think they can come.

*And -
This is the briefing and
the best we gave the Gov
an advisory. Letters went out
Fred Ex on Monday. Get to be added
are minutes from Louis Robinson
Tom Staples and the Science and Tech
board. We will keep you posted
John*

1988 CATCH & RELEASE NOMINEES
April 25, 1988

- 1) Yvon Chouinard, President
Patagonia Corp.
259 West Santa Clara
Ventura, CA 93001
805-643-8616 - work

Sponsor: Bud Lilly
Bozeman
587-9566

Patagonia is a \$7 million company that has recently relocated its mail order division to Montana. Potential for further expansion into Montana; as a friend of Rick Graetz, he gets up here often and enjoys Montana (loves to fly fish).

- 2) Neil R. Hinchman
External Affairs Vice President
AT&T Communications
1875 Lawrence St., Room 1509
Denver, CO 80202
303-298-6130 - work
303-694-0351 - home

Sponsor: Jay Wilson Preston
Ronan Telephone Co.
676-2751

As supervisor of AT&T's long distance telecommunications services, he can influence the timing of the installation of digital switching equipment in Billings, which, in turn, will affect Montana's desirability as a location for administrative, intensive or "information-age" businesses, i.e., mail order catalog businesses.

- 3) Robert Y. Wang, Director
Far East Trade Service, Inc.
555 Montgomery Street, Suite 603
San Francisco, CA 94111-2564
415-788-4304 - work

Sponsor: Keith Colbo
Dept. of Commerce
444-3494

Was helpful in establishing our showroom and trade office in Taiwan; has a direct relationship with many potential investors and can be helpful in relocation/financing efforts (loves to fly fish).

- 4) Peter C. Weaver, President
Fischer USA
242 Silver Hill
Concord, MA 01742
800-225-1131 - work
617-369-7344 - home

Sponsor: Chase Hibbard
Helena
442-1803

Has told Chase Hibbard, who nominated him, that he is determined to move his business, which is very compatible with Montana (manufactures downhill and cross country skis, boots and poles). Likes Montana, but has expressed concern about transportation, labor availability and supply of raw materials ("fanatic" fly fisherman).

- 5) Koichiro (Kenny) Yoshino
Vice President & General Manager
C. Itoh (America) Inc.
One Denver Place
99 West 18th St., Suite 3060
Denver, CO 80202
303-572-7777 - work

Sponsor: Ray Tilman
Butte
723-4081

This billion-dollar Japanese trading company deals in commodities like copper, grain, coal, oil, lumber, etc. Presently represents sales between Montana Resources and Nippon Mining. Could help expand sales of Montana raw materials in Pacific Rim.

- 6) Roger Stone
Stone Container Corporation
150 North Michigan Avenue
Chicago, IL 60601
312-580-4601 - work

Sponsor: Dan Regan
Montana Power Company
723-5421

Chairman & CEO of Stone Container Corporation. Purchased Champion's liner board mill 1-2 years ago. Has potential for expanding current operations in Montana to include a paper mill.

- 7) Whitney McMillan
Chairman of the Board
Cargill, Inc.
Box 9300
15407 McGinity Road
Wayzata, MN 55391
612-475-7575 - work

Sponsor: Paul Schmechel
Montana Power Company
723-5421

Chairman of Cargill, Inc. In addition to existing operations in Montana, there is potential for establishment of a meat packing plant or other agriculture processing plants in the state.

- 8) Charles S. Carter
CEO & Chairman of the Board
Great Lakes Forest Products Limited
P.O. Box 430
Thunder Bay, Ontario, Canada, P7C 4W3
807-475-2656 - work

Sponsor: Bill Duffey
Business Assistance

As Chairman and CEO of Great Lakes Forest Products Ltd., he has shown interest in expanding his company's paper products operations and could be interested in a Montana location.

- 9) Albert J. Colianni, Jr.
Senior Vice President
Marquette Bank Minneapolis
Sixth & Marquette Avenue
Minneapolis, MN 55480
612-341-5757 - work

Sponsor: Tom Ellis
Box 1441
Conrad, MT 59425
278-3446

This is an expanding banking network with some existing operations in Montana. Potential for expanded investment in Montana.

- 10) R.T. Shaw
Chairman & C.E.O.
I.C.H. Corporation
4211 Norbourne Blvd.
Louisville, KY 40207
502-897-1861 - work

Sponsor: John Oitzinger
Helena
449-6390

I.C.H. Corporation is a life insurance holding company with a billion-dollar loan portfolio. He has expressed reservations about Montana's political and economic climate. Oitzinger values him as a long-term, fixated leader who needs some encouragement to invest in Montana.

- 11) Joe Kingman, President
American National Bank
Fifth and Minnesota
St. Paul, MN 55101
612-298-6071 - work

Sponsor: John Bailey
Livingston
222-1673

Wholesale banker; can help arrange financial needs of banking industry in Montana; likes to fly fish.

- 12) Atlee Mitchell Kohl
President & Director
Woodland Investment Company
3007 Skyway Circle North
Irving, TX 75038-3598
214-659-9500 - work

Sponsor: John Oitzinger
Helena
449-6390

Private investor with an interest in several Montana businesses. Apparently interested in purchasing a ranch in Montana; likes to fly fish.

- 13) E. Eugene Garris
Executive Director
YMCA of the Rockies
P.O. Box 800
Association Camp, CO 80511
303-586-3341 - work
303-623-9215 - work

Sponsor: Ernie Strum
Red Lodge
446-2123

Continued effort on the part of Ernie Strum to get this fellow to consider Montana as a possible location for a "YMCA of the Rockies."

14) Dwight Lee
Venture Capitalist
Robert R. Barker & Co.
630 Fifth Avenue
New York, NY 10111
212-541-6970 - work
212-348-4063 - home

Sponsor: John Oitzinger
Helena
449-6390

Venture capitalist who has considered, but rejected, several investment opportunities in Montana. Has said he will continue to consider investments in Montana.

15) Elwood D. Howse, Jr.
Cable & Howse Ventures
777 108th N.E., #2300
Bellevue, WA 98004
206-646-3035 - work

Sponsor: Bill Kearns
State Bank of Townsend
266-3176

Venture capitalist whose partner, Michael Ellison, was (invited) nominated last year by Bill Kearns.

16) William D. Smithberg
Chairman of the Board
Quaker Oats Co.
Box 9001
Chicago, IL 60609
312-222-7111 - work

Sponsor: Dan Regan/Bill Duffey
Montana Power Co./Business Assistance
723-5421

As Chairman of Quaker Oats Co., he has expressed interest in a Montana operation.

17) Robert Fetzter, President
Sea Farms Inc.
8 Sound Shore Drive
Greenwich, CT 06830
203-625-3900 - work

Sponsor: Keith Colbo
Dept. of Commerce
444-3494

Recently, announced plans to locate a facility in Lewistown for commercial production of sturgeon. Potential for expanded fish products in Montana.



State of Montana
Office of the Governor
Helena, Montana 59620
406-444-3111

TED SCHWINDEN
GOVERNOR

April 26, 1988

R.T. Shaw, Chairman & C.E.O.
I.C.H. Corporation
4211 Norbourne Blvd.
Louisville, KY 40207

Dear Mr. Shaw:

On behalf of your colleague, John Oitzinger, I wish to extend to you an invitation to join us in Montana for our fourth annual "Catch & Release Fly Fishing Tour," June 24-27, 1988. Sponsored by the Montana Ambassadors, a group of 180 top business leaders, the tour is designed as a special three days of flyfishing for leading, corporate executives and as a chance to get acquainted with Montana. Our guest list is limited to seven.

The setting for the tour is The Complete Fly Fisher, a flyfishing lodge situated on the bank of the Big Hole River in southwestern Montana. We will provide our guests with lodging, food, personalized guide service, equipment and plenty of opportunities to catch some of Montana's famous wild trout. All you need to provide is your transportation to and from Montana.

We consider this an excellent way for you to get to know Montana. The atmosphere will be informal and relaxed with primary emphasis on trout fishing.

I will be calling you soon to discuss the tour. I hope you will be able to join us.

Best personal regards,

TED SCHWINDEN
Governor

cc: Bud Lilly, Tour Chairman

1988 CATCH & RELEASE N
April 25, 1988

*sent to the first
10 nominees*

- 1) Yvon Chouinard, President
Patagonia Corp.
259 West Santa Clara
Ventura, CA 93001
805-643-8616 - work

Sponsor: Bud Lilly
Bozeman
587-9566

Patagonia is a \$7 million company that has recently relocated its mail order division to Montana. Potential for further expansion into Montana; as a friend of Rick Graetz, he gets up here often and enjoys Montana (loves to fly fish).

- 2) Neil R. Hinchman
External Affairs Vice President
AT&T Communications
1875 Lawrence St., Room 1509
Denver, CO 80202
303-298-6130 - work
303-694-0351 - home

Sponsor: Jay Wilson Preston
Ronan Telephone Co.
676-2751

As supervisor of AT&T's long distance telecommunications services, he can influence the timing of the installation of digital switching equipment in Billings, which, in turn, will affect Montana's desirability as a location for administrative, intensive or "information-age" businesses, i.e., mail order catalog businesses.

- 3) Robert Y. Wang, Director
Far East Trade Service, Inc.
555 Montgomery Street, Suite 603
San Francisco, CA 94111-2564
415-788-4304 - work

Sponsor: Keith Colbo
Dept. of Commerce
444-3494

Was helpful in establishing our showroom and trade office in Taiwan; has a direct relationship with many potential investors and can be helpful in relocation/financing efforts (loves to fly fish).

1988 CATCH & RELEASE NOMINEES
April 25, 1988

- 1) Yvon Chouinard, President
Patagonia Corp.
259 West Santa Clara
Ventura, CA 93001
805-643-8616 - work

Sponsor: Bud Lilly
Bozeman
587-9566

Patagonia is a \$7 million company that has recently relocated its mail order division to Montana. Potential for further expansion into Montana; as a friend of Rick Graetz, he gets up here often and enjoys Montana (loves to fly fish).

- 2) Neil R. Hinchman
External Affairs Vice President
AT&T Communications
1875 Lawrence St., Room 1509
Denver, CO 80202
303-298-6130 - work
303-694-0351 - home

Sponsor: Jay Wilson Preston
Ronan Telephone Co.
676-2751

As supervisor of AT&T's long distance telecommunications services, he can influence the timing of the installation of digital switching equipment in Billings, which, in turn, will affect Montana's desirability as a location for administrative, intensive or "information-age" businesses, i.e., mail order catalog businesses.

- 3) Robert Y. Wang, Director
Far East Trade Service, Inc.
555 Montgomery Street, Suite 603
San Francisco, CA 94111-2564
415-788-4304 - work

Sponsor: Keith Colbo
Dept. of Commerce
444-3494

Was helpful in establishing our showroom and trade office in Taiwan; has a direct relationship with many potential investors and can be helpful in relocation/financing efforts (loves to fly fish).

- 4) Peter C. Weaver, President
Fischer USA
242 Silver Hill
Concord, MA 01742
800-225-1131 - work
617-369-7344 - home

Sponsor: Chase Hibbard
Helena
442-1803

Has told Chase Hibbard, who nominated him, that he is determined to move his business, which is very compatible with Montana (manufactures downhill and cross country skis, boots and poles). Likes Montana, but has expressed concern about transportation, labor availability and supply of raw materials ("fanatic" fly fisherman).

- 5) Koichiro (Kenny) Yoshino
Vice President & General Manager
C. Itoh (America) Inc.
One Denver Place
99 West 18th St., Suite 3060
Denver, CO 80202
303-572-7777 - work

Sponsor: Ray Tilman
Butte
723-4081

This billion-dollar Japanese trading company deals in commodities like copper, grain, coal, oil, lumber, etc. Presently represents sales between Montana Resources and Nippon Mining. Could help expand sales of Montana raw materials in Pacific Rim.

- 6) Roger Stone
Stone Container Corporation
150 North Michigan Avenue
Chicago, IL 60601
312-580-4601 - work

Sponsor: Dan Regan
Montana Power Company
723-5421

Chairman & CEO of Stone Container Corporation. Purchased Champion's liner board mill 1-2 years ago. Has potential for expanding current operations in Montana to include a paper mill.

- 7) Whitney McMillan
Chairman of the Board
Cargill, Inc.
Box 9300
15407 McGinity Road
Wayzata, MN 55391
612-475-7575 - work

Sponsor: Paul Schmechel
Montana Power Company
723-5421

Chairman of Cargill, Inc. In addition to existing operations in Montana, there is potential for establishment of a meat packing plant or other agriculture processing plants in the state.

- 8) Charles S. Carter
CEO & Chairman of the Board
Great Lakes Forest Products Limited
P.O. Box 430
Thunder Bay, Ontario, Canada, P7C 4W3
807-475-2656 - work

Sponsor: Bill Duffey
Business Assistance

As Chairman and CEO of Great Lakes Forest Products Ltd., he has shown interest in expanding his company's paper products operations and could be interested in a Montana location.

- 9) Albert J. Colianni, Jr.
Senior Vice President
Marquette Bank Minneapolis
Sixth & Marquette Avenue
Minneapolis, MN 55480
612-341-5757 - work

Sponsor: Tom Ellis
Box 1441
Conrad, MT 59425
278-3446

This is an expanding banking network with some existing operations in Montana. Potential for expanded investment in Montana.

- 10) R.T. Shaw
Chairman & C.E.O.
I.C.H. Corporation
4211 Norbourne Blvd.
Louisville, KY 40207
502-897-1861 - work

Sponsor: John Oitzinger
Helena
449-6390

1

9

8

7

THE MONTANA
AMBASSADORS
ANNUAL
REPORT



The Mission:

- To represent the Office of the Governor and the Department of Commerce in business-related contacts in and out of the state;
- To assist the Department of Commerce with its business, trade and tourism development programs;
- To sponsor projects that encourage and support economic improvements throughout the state;
- To support, whenever practical, efforts by other groups to contribute to the economic vitality of Montana;
- And, as official Ambassadors of the State of Montana, to put the best interests of the state before personal interests and to give freely of time, energy and personal finances in support of this mission.

Message from the Governor

Again in 1986, the Ambassadors were in the forefront of Montana's economic development events — contributing ideas, expertise and time.

The "Montana — An Economy in Transition" conference in July co-sponsored by my office, the Montana Power Company, the Montana International Trade Commission, the Department of Commerce and the Ambassadors and featuring noted economist Dr. David Birch, became a pivot point for public policy discussions of the state's economic future. The Ambassadors as a group, and individual members who served on the subsequent Transition Task Force, made sure that the ideas and directions explored in July were developed and ready for public debate by November — a short 100 days later.

Other Ambassadors projects also came to fruition in 1986. I was happy to present certification awards to the Montana Certified Communities' first "graduating class." Nineteen cities, towns, counties or tribes successfully completed the rigorous 16-month work schedule needed to establish a strong, durable and effective local economic development effort. As "Better for Business" signs appear at the entrance of certified communities, you are sending a visible and powerful message about Montana's pride and concern for business.

And there were the traditional Ambassador activities. The Catch and Release Fly Fishing Tour, marketing seminars for small



businesses, hosting foreign dignitaries and business relocation prospects, and personal calls on out-of-state tour operators and businesses all added to the vitality and success of our economic development efforts.

As we move forward in these changing and challenging times, I will continue to rely upon the Ambassadors. Your aggressive and positive representation of the state is crucial. I also expect you to continue sharing with me your ideas and suggestions for improving and expanding our economic horizons. Together we will make it happen.

TED SCHWINDEN
Governor

Comments from the President



1 9 8 7

It has been a very active and exciting year for the Montana Ambassadors, as we have expanded the involvement of individual Ambassadors throughout the state and activated some new and exciting programs to benefit economic development in Montana. Probably one of the most important organizational changes during the year was the creation of six Ambassador Regions, encompassing specific geographical areas of the state as defined in the official Montana State Highway Tourism Map. These areas are: Gold West Country (Helena and Butte area), Custer Country (Billings area), Glacier Country (Missoula and Kalispell area), and Charlie Russell Country (Great Falls area).

A regional vice president was appointed for each area, and several regional meetings were held throughout the year, bringing the Montana Ambassador program closer to home on a regular basis. This regionalization has been very beneficial to the organization, and in my opinion goes a long way toward involving each Montana Ambassador in a more effective manner. I want to thank each regional vice president for the fine work they have done in a relatively short time under this new organizational structure.

The business recruitment committee did a great job in 1986 with the continuation of the Catch & Release fly fishing program and the introduction of the Montana Alumni program, whereby the leading alumni of the University of Montana, Montana State University, Montana Tech and Carroll College were contacted by the

1 9 8 7

Ambassadors in anticipation of their relocating or expanding their businesses into Montana. A follow-up program between individual Ambassadors and responding alumni will continue throughout the coming year. Also, a new business recruitment program known as the Montana Winter Rendezvous was developed, and this winter's ski event involving prominent corporate executives will take place in the Flathead area in March 1987. This program was suggested by the Glacier Country Region and will be patterned after the Catch & Release program.

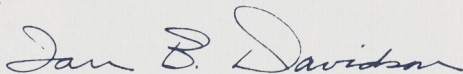
The Montana Certified Communities program, co-sponsored by the Montana Ambassadors and the Department of Commerce, had a highlight in 1986 when 19 Montana cities and counties were certified at a special banquet in Helena. This certification strengthens the capability of these communities to develop their local economies.

Another major accomplishment began with a program co-sponsored by the Montana Ambassadors, the Governor's Office, the Montana Power Co., the Department of Commerce, and the Montana International Trade Commission. Dr. David Birch gave an economic workshop in Butte, which was followed by the creation of the Economic Transition Task Force appointed by Governor Schwinden. The task force issued a report of its findings and recommendations in November 1986. The Montana Ambassadors have endorsed this report and communicated that endorsement

to all members of the Montana Legislature.

The Ambassadors also endorsed a Department of Commerce advertising program known as "It's Always Friday in Montana," which was very effective in demonstrating to the readers of the *Wall Street Journal* that Montana is a great place to develop a business and enjoy a wonderful lifestyle.

It has been a fun and exciting year for the Montana Ambassadors, and I certainly want to thank Keith Colbo and his Department of Commerce for the fine support they have provided the Ambassador organization. Also, we very much appreciate the support of Governor Ted Schwinden in all of the Ambassador programs. Thanks to each of you for your enthusiasm and work during the past year.



IAN B. DAVIDSON
President

Ambassador of the Year



In January, the directors of the Montana Ambassadors selected Bob Henkel as Ambassador of the Year. He was the regional nominee from Gold West Country. Bob is CEO of Sage Advertising, which has offices in Helena and Billings.

As an Ambassador he has provided unflagging enthusiasm and support. He is a founding member and has served on the Business Recruitment Committee from its inception. He is the 1986-87 chairman of that committee.

Bob's Ambassador contributions include building the college alumni lists for business recruitment, helping to develop the Ambassador slide show, working on a Japanese travel brochure with Northwest Airlines and the Mansfield Foundation, working on the "Invite a Business to Montana" program, and assisting with the Montana Winter Rendezvous.

In addition to the Ambassadors, Bob is a founding member of the Hometown Helena Pride Committee, executive director of the Montana Tax Reform Education Committee and serves as president of St. Peter's Hospital Foundation.

1 9 8 7

Regional Ambassadors of the Year

Charlie Russell Country

JAN REAGOR

Reagor was active in the Certified Communities Program in her region and throughout the state and is responsible for recruiting seven new members. She also suggested documenting the skills of the region's members and filing that information with the Department of Commerce so that appropriate Ambassadors can be contacted when out-of-state business prospects contact the state. This approach has been adopted by other regions.



Custer Country

JIM SPRING

Spring is a charter member of the Montana Ambassadors and serves on its board of directors. He is also on the Billings Forward board. Spring has had frequent contacts with business recruitment prospects on behalf of both organizations. In addition, Spring serves on the Board of Directors for Rocky Mountain College and is the former chair of the Governor's Council on Management.



1 9 8 7

Glacier Country

R. W. "BUCK" TORSTENSON

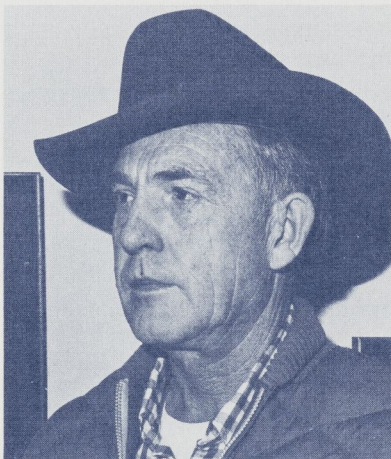
Torstenson is a charter member of the Montana Ambassadors and serves on its board. He is also a member of the Kalispell Development Corporation and a founding member of the Flathead County economic development organization. Torstenson was an active participant in the Certified Communities program and is active in tourism promotion. He frequently hosts business recruitment or film location prospects during their visits to Montana.



Yellowstone Country

BUD LILLY

Lilly has chaired the Catch & Release tour for two years and is currently vice president for Yellowstone Country. He is also a member of the Gallatin Development Corporation Business Recruitment Committee and in that capacity and as an Ambassador has worked with numerous out-of-state interests considering a move to Montana.



Missouri River Country

Missouri River Country made no nomination for 1986-87.

Fiscal Notes

Montana Ambassadors, Inc. Cash Receipts and Disbursements

	OPERATIONS		
	YEAR TO DATE	BUDGET	SPECIAL
	12/31/86	1986	PROJECTS
Receipts to Date:			
Membership	\$ 23,550	\$ 23,850	
Interest income	1,386	500	
Annual meeting	2,585	—	
Blazer badges	100	—	
Montana Venture Capital Forum			\$ 2,250
Certified Cities Program			2,865
Task Force			16,367
High Tech Forum			4,250
Total Receipts	27,621	24,350	25,732
Expenditures:			
Internal Operation:			
Meetings:			
Annual	4,464	2,000	
Board	140	800	
Miscellaneous administration	3,327	1,100	
Total internal operation expenditures	7,931	3,900	
Program:			
Ambassador regions	408	7,200	
Product promotion	127	2,000	
Catch & Release Fly Fishing Tour	8,150	7,000	
Protocol:			
Meals	1,560	2,500	
Gifts and prints	1,146	1,500	
Publicity:			
Annual report	959	1,200	
Newsletter	1,122	1,500	
Special programs:			
Montana Venture Capital Forum			5,550
Certified Cities	90	—	7,108
Birch Conference			1,773
MT Economic Transition			
Task Force			13,386
High Tech Forum			4,413
Total program expenditures	13,562	22,900	32,230
Total expenditures	21,493	26,800	32,230
Excess revenue over (expense)	\$ 6,128	\$ (2,450)	\$ (6,498)

Fiscal Notes

continued

Cash and Fund Balances

Beginning Cash Balances as of 1/1/86:

Checking	\$ 4,127	
Savings	5,226	
Certificate of Deposit	<u>7,536</u>	
		\$ 16,889
Excess of receipts over (expense)		<u>(370)</u>
		<u>\$ 16,519</u>

Ending Cash as of 11/12/86:

Checking	\$ 427
Savings	8,155
Certificate of Deposit	<u>7,937</u>
	<u>\$ 16,519</u>

	OPERATIONS	CERTIFIED CITIES	HIGH TECH & TASK FORCE	MONTANA VENTURE CAPITAL FORUM
Fund Balances:				
Beginning balance				
1/1/86	\$ 13,447	\$ 3,442	\$ —	\$ —
Receipts to 12/31/86	<u>27,621</u>	<u>2,865</u>	<u>20,617</u>	<u>2,250</u>
Total	41,068	6,307	20,617	2,250
Expenditures to 12/31/86	<u>21,493</u>	<u>7,108</u>	<u>19,572</u>	<u>5,550</u>
Balance as of 12/31/86	<u>\$ 19,575</u>	<u>\$ (801)</u>	<u>\$ 1,045</u>	<u>\$ (3,330)</u>
Ending Balances:				
Operations	\$ 19,575			
Certified Cities	(801)			
Task Force & High Tech	1,045			
Montana Venture Capital Forum	<u>(3,330)</u>			
Total Fund Balances	<u>\$ 16,519</u>			

1 9 8 7

Committee Notes

Business Recruitment

Each year the Ambassadors' Business Recruitment Committee develops the recruitment strategy for the Montana Ambassadors. The committee then meets quarterly to gauge the progress of its programs and discuss future recruitment projects and strategy.

This year the committee supported a number of projects. One was to identify Canadian firms with relocation potential and to determine possible difficulties when working with Canadian firms. The committee also targeted Montana university alumni for a direct mail recruitment campaign and helped to develop a business location brochure for Ambassador recruitment visits.

In 1987 the committee plans to complete the alumni recruitment project and to host out-of-state business executives at a "Montana Winter Rendezvous" featuring winter sports in Montana — a program patterned after the "Catch & Release" fly fishing tour. An additional project will be a direct mail recruitment effort that will target specific industries and businesses selected by the department and a number of Certified Communities. The project will be funded largely by the private sector.

Committee members: Bob Henkel, chairman, Martin White, Bob Kelly, Gene Thayer, Bruce Crippen, Bill Kearns, Betty Kissock, Al Bell, Ray Thompson, Bruce Vorhauer, Jim Lucas, Ron Haugen, Dan Averill, Randle Romney, Don Ruby, Tom Staples, Jim Hayhurst and Dan Regan.

Community Development

The first Certified Communities program year culminated in an exciting awards banquet on October 22, 1986. Almost 200 Ambassadors and community leaders joined Governor Schwinden in honoring the 19 communities that successfully completed the program.

Part of the certification process called for Ambassadors to play the role of business prospects and visit candidate communities. The result was a useful and challenging critique for the local organization. The process also developed enduring partnerships. For example, Red Lodge hosted several Townsend Ambassadors at its certification visit. The meeting was so successful that the Ambassadors arranged additional visits between the towns. Subsequently, Townsend is beginning the Certified Communities program and the Ambassadors have decided to continue to expand the visitation exchange program during 1987.

The Community Development Committee will also guide the first award program for Certified Communities, providing recognition for special achievements in tourism, downtown development,

1 9 8 7

new business development, business retention and community development.

Committee members: Bob Wuttke, chairman, Clark Pyfer, Alan Nicholson, Virginia Thompson, Don Ostrem and Tom Markle.

Local Economic Advisory Days

In January 1986, Governor Schwinden introduced a new program that involves state government visitations to communities across the state. The program, called Local Economic Advisory Day (LEAD), allows the Governor and Department of Commerce officials to investigate local economic development programs in person and to visit with successful business people in their own community. The communities or areas visited in 1986 included Ravalli County, the Wolf Point/Poplar area, Butte/Silver Bow and Flathead County.

Ambassadors in the host communities have been very active and supportive: they select the firms to visit, do much of the on-site tour preparation and host the Governor when he arrives. The local Certified Communities sponsoring organization also works closely with the Ambassadors in preparing these events and the partnership has proved to be effective and rewarding.

Marketing

The "Made in Montana" program continues to grow. Nearly 2,000 Montana companies use the colorful label on their products.

This past year the Marketing Committee played a major role in presenting six small business seminars held throughout Montana. This seminar series was co-sponsored by the Department of Commerce and the U.S. Small Business Administration SCORE program. Approximately 600 businesses throughout Montana attended these one-day seminars.

The committee is also planning a series of in-state trade shows scheduled to begin in April. These shows are intended to attract retail merchants who will feature "Made in Montana" sections in their stores.

Marketing committee members: Jane Meyer, chairwoman, Kay Fulkerson, Jean Weeks, Charles Brooks, Bob Russell, Jan Reagor and Lois Toparski.



Catch & Release Fly Fishing Tour

Through the efforts of the Catch & Release Fly Fishing Tour Committee, Montana's second annual world-class fly fishing event was again a success. Nine out-of-state CEOs enjoyed three days of Montana hospitality and fishing on blue ribbon streams — all courtesy of the Montana Ambassadors.

The tour was held September 12-15 at the Mountain Sky Guest Ranch in the Paradise Valley south of Livingston. Each visitor was teamed with a guide and an Ambassador host. Events included three unique fishing experiences, a fishing clinic, a slide show on fishing in Montana and fishing techniques and a western barbecue with Governor Schwinden.



As before, the tour is not a "hard sell" recruitment effort. The purpose, rather, is to give the CEOs a chance to relax, fish and enjoy Montana's lifestyle. The Ambassadors' Business Recruitment Committee selected the executives based on their company's potential to relocate or expand in Montana.

Guests of the 1986 tour were: **Jim Abbott**, Northwest Airlines, St. Paul, Minnesota; **Charles Allmon**, Growth Stock Outlook, Chevy Chase, Maryland; **James Galbreath**, The Rockies Fund, Denver, Colorado; **Joseph Guibault**, Stouffer Hotels, Solon, Ohio; **Koji Hirao**, Long-Term Credit Bank of Japan, New York; **Gene Rice**, MeraBank, Phoenix, Arizona; **Ralph Saul**, Peers & Co., Philadelphia, Pennsylvania; **J.R. Simplot**, J.R. Simplot Company, Boise, Idaho, and **Hobart Teneff**, Pegasus Gold, Inc., Spokane, Washington.

Ambassadors who participated as hosts or organizers were: Ian Davidson, president; Keith Colbo, secretary; George Anderson, treasurer; Ed Jasmin, past president; Bob Henkel, chairman of the Business Recruitment Committee; John Oitzinger, and Tom Staples, chairman of the Protocol Committee.

Committee members: Bud Lilly, chairman, Al Bell, Kay Fulkerson, Audrey O'Connell, Lewis Robinson, Ernie Strum, John Sullivan and Ray Tilman.

Membership Report

The following Ambassadors serve the organization as its board of directors:

Board of Directors

President:	Ian Davidson
First Vice President:	Paul Schmechel
Second Vice President:	Jim Spring
Treasurer:	George Anderson
Secretary:	Keith Colbo
Directors:	Ed Jasmin Maxine Johnson Dan Lambros Bill Martin Don Olsson, Jr. Lola Hansen Gary Buchanan Ray Thompson Buck Torstenson Rick Sampsen

Regional Vice Presidents:

Charlie Russell Country:	Larry Geske
Custer Country:	Charles Brooks
Glacier Country:	William F. Headapohl
Gold West Country:	Ed Jasmin
Missouri River Country:	Lynn D. Grobel
Yellowstone Country:	Walen F. Lilly

Montana Ambassadors

Anaconda	Nick Cladis
Frank Bennett	Janet Cox
Melvin Stokke	Bruce D. Crippen
Belgrade	Kay Foster
Dr. John R. Gillis	James R. Graff
Bigfork	Ron Haugen
Dan L. Averill	Kenneth E. Hickel
Doug Averill	Thomas C. Kryzer
Billings	E.D. "Bob" Merrill
Basil Andrikopoulos	Jase O. Norsworthy
Charles Brooks	Thomas A. Overturf
Gary Buchanan	Jackson L. "Jack" Schutte
	Thomas W. Scott
	George Selover

Jim Spring
Alvin L. Swanson, Jr.
Robert H. Waller

Bozeman

Terry Abelin
Cory Dogterom
Myles S. Eaton
Michael W. Hager
Robert H. Lehrkind
Walen F. Lilly
Harry W. Newlon
Cal Northam
Audrey O'Connell
Philip R. Sandquist
Charles V. Shewey
James W. Stephens
Dr. Bill Tietz
Marilyn F. Wessel

Butte

John S. Cote
Betty Kissock
Hazel Leuprecht
Herb K. Leuprecht
Dr. Lindsay Norman
C. Daniel Regan
Urban L. Roth
Paul Schmechel
Jack Sherick
Jim Thompson
Ray Tilman
Lois Toplarski
Martin A. White

Chinook

R. H. "Bob" Sizemore

Clancy

Art Seiler

Colstrip

F. Paul Scotten

Columbus

Kent Williams

Condon

Robert L. Ford

Conrad

Thomas L. Ellis

Dagmar

Rick Sampsen

Dillon

Owen D. Shively

Dutton

Lloyd DeBruycker

East Helena

William H. Porter
Melvin A. Sharp

Glasgow

Lynn D. Grobel
Tom Markle

Glendive

Frank Crisafulli

Great Falls

Albert G. Bell
R. C. "Dick" Bennett
Ian B. Davidson
Al Donohue
Dave Duncan
Larry Geske
Dave Hilde
Sheldon Ivers
Paul E. Matteucci
R. Jane Meyer
Donald L. Ostrem
Jan Reagor
LoyAnn P. Rembe
Lillian E. Schmasow
Frank Shaw
Bill Sirak

J. Robert Sletten

Marvin Sunderland

Gene Thayer

N.E. "Tuck" Vosburg

James Wylder

Hamilton

Nils Ribl

Hardin

Everett Bullis

Erle C. Gross

Ron Lytle

Harlowton

Warren B. "Buck" Jones

Havre

Ron Harmon

Helena

Al Adams
George D. Anderson
Ralph T. Anderson
Richard L. Bourke
Alan Cain
Keith L. Colbo
John Etchart
Rick Graetz
Jim Hayhurst
Bob Henkel
Chase T. Hibbard
Edwin H. Jasmin
Earl Johnson
Thomas L. Judge
Karen McNeal-Booker
Alan D. Nicholson
John J. Oitzinger
Clark Pyfer
Russell J. Ritter
Randle Romney
George D. Ruff
Robert A. Russell
Tom Staples
Virginia Thompson
Charles W. Walk
Jan G. Weeks

Kalispell

Frank Thomas
Rolland B. Andrews
Dan Black
Lee Carothers
Roger L. Claridge
Billie Cordes
Carol Daly
Mike Fuller
Dorothy H. Maitland
Bill Martin
F. Charles Mercord
Stephen P. Olson
Calvin S. Robinson
Don Ruby
Clyde Smith
JoAnn Speelman
Ray Thompson
R.W. "Buck" Torstenson

Lewistown

Ken Byerly

Lincoln

James C. Johnson

Livingston

John Bailey
Bruce A. Erickson
John C. Sullivan

Malta

Lee Robinson

Miles City

Jim Lucas
Bob Phair

Milltown

Ernie Corrick

Missoula

David R. Calahan
George D. Caras
William O. Coffee
Milton Datsopoulos
Lyle R. Grimes
William F. Headapohl
Maxine C. Johnson
Robert J. Kelly
Dr. James V. Koch
Dan Lambros
George Lambros
R.H. "Ty" Robinson
John Ruffatto
Dan Smith
Robert W. Wuttke

Nichart

George Willett

Plentywood

Bar E. Zeidler

Red Lodge

Ernie Strum

Ronan

Donald E. Olsson, Jr.

Seeley Lake

Dr. Bruce Vorhauer

Sidney

V. Kay Fulkerson
Lola Hansen
Nick Jones

Townsend

J. William Kearns
Neil Moldenhauer

West Glacier

Sally Thompson

West Yellowstone

Calvin W. Dunbar
F.W. Howell
Lewis S. Robinson

White Sulphur Springs

Michael E. Grove

Whitefish

Bill Kuehn
W.E. Schreiber
Carolyn Watkins



*For more information
about this program, contact:*

Montana Ambassadors
1424 9th Avenue
Helena, MT 59620
Phone (406) 444-3494





Sixth and Marquette
Minneapolis, MN 55480

June 28, 1988

Mr. Bud Lilly
Tour Chairman
Montana Ambassadors
Department of Commerce
1424 Ninth Avenue
Helena, Montana 59620

Dear Bud:

Thank you for all of the hard work and genuine hospitality extended to me on the Montana Ambassadors' Catch and Release Fly Fishing trip. From the start I knew the trip would be excellent because of you and your fine reputation. Meeting and making friendships with the entire group made the weekend a pleasure. Catching fish was only an added bonus!

I will send to you pictures to support "our story" once they are developed. The pictures might provide quite some publicity for the trip.

I hope to see you again in the future.

Sincerely,

A handwritten signature in blue ink that reads 'Bud'.

Albert J. Colianni, Jr.
Senior Vice President

AJC:rjh

MONTANA AMBASSADORS
FOURTH ANNUAL CATCH & RELEASE FLY FISHING TOUR

After three successful years of the Montana Ambassadors Catch and Release Fly Fishing Tour, it was hard to believe that the "Fourth Annual" would top them all. But to all of the participating Ambassadors this past June, it certainly seemed to be an extraordinary mix of excellent weather and fishing conditions, first class accommodations and wonderful meals, talented guides and eager learners, and most importantly, business and pleasure in equal doses.

Bud Lilly, Catch and Release Tour Committee chairman, made an excellent decision when he seized the opportunity last spring to reserve The Complete Fly Fisher Lodge in Wise River for a June event in order to take advantage of the tail-end of the Big Hole's renowned salmonfly hatch season. Given the drought and fire season that has followed, it was an even luckier decision in terms of advance planning.

Eight out-of-state guests, who once again were selected on the basis of their company's potential for expanding or relocating in Montana, participated in this year's slightly shorter event which was held from June 24-27 and allowed for two full days of fishing. The tour began Friday, June 24, with a clinic to introduce casting technique to both guests and Ambassadors followed by a warm welcome and river orientation from Bud Lilly and hosts, Dave and Chris Decker.

This year's participants were a blend of both experienced fly fisherman and novices and all spent Saturday and Sunday testing their skills on the diverse waters of the beautiful Big Hole. The salmon flies had departed for the season but there were plenty of caddis flies, mosquitoes, and a healthy number of browns, rainbows, cutthroats, and grayling in a variety of sizes. It seemed that everyone had at least one very successful day of catching and releasing from the lodge's well equipped drift boats, and with the help of Dave Decker and his experienced crew of river guides, many people experienced two days in a row of impressive catches.

Governor Ted Schwinden joined tour participants Sunday evening for the traditional presentation of awards. Guests were once again honored for lying, bad technique, bad equipment, loss of concentration due to distractions, and other dubious distinctions, and all were awarded an appropriate gift for their achievement. Each guest of the Ambassadors was also presented with a gift of "Bud Lilly's Guide to Western Fly Fishing."

Throughout the weekend there was a strong sense of purpose that was evident to all of those involved - in a relaxed setting with ideal conditions and an impressive group of participants, business in Montana can be frankly discussed. And it was..... between Ambassadors and guests, between guests themselves, and while fishing, during Liar's Hour, and over breakfast and dinner.

Guests this year were Albert "Bert" Colianni, Jr., Senior Vice President, Marquette Bank Minneapolis; Neil Hinchman, External Affairs Vice President, AT&T Communications; Joe Kingman, President, American National Bank; Dwight Lee, Venture Capitalist, Robert R. Barker & Co.; Robert "Bob" Shaw, Chairman and C.E.O., I.C.H. Corporation; Robert Wang, Director, Far East Trade Service, Inc.; Peter Weaver, President, Fischer USA; and Koichiro "Kenny" Yoshino, Vice President and General Manager, C. Itoh (America) Inc.

Bud Lilly was assisted in the planning and organization by his committee members, John Wilson, Audrey O'Connell, and Ernie Strum. Other participating Ambassadors who were nominators this year included, John Bailey, Keith Colbo, Chase Hibbard, John Oitzinger, Jay Preston, Dan Regan, Lewis Robinson, Jim Spring, and Ray Tilman.

Audrey O'Connell
September, 1988

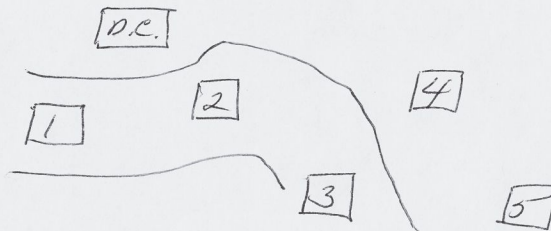
1988
1989 MONTANA AMBASSADORS' CATCH & RELEASE TOUR

ARRIVAL: Friday, June 24, 1988 (afternoon)
DEPARTURE: Monday, June 27, 1988 (after breakfast)

TOTAL PERSONS: ¹⁷ ~~16~~ Fishing Guests
3 Staff
PLUS: Sunday Night Only - Governor Schwinden + Aide

5 DELUXE CABINS/2 PERSONS PER CABIN:

- 1 Neil Hinchman - Guest
Koichiro (Kenny) Yoshino - Guest
- 2 Joe Kingman - Guest
Albert Colianni - Guest
- 3 Peter Weaver - Guest
Robert Wang - Guest
- 4 R.T. Shaw - Guest
Dwight Lee - Guest
- 5 Keith Colbo - Dept. of Commerce
Jim Spring - Ambassador



1 DOUBLE CABIN/4 PERSONS/2 BDRMS + FOLDOUT COUCH:

only 1 bathroom

- D. Cabin* { Jay Preston - Ambassador
Chase Hibbard - Ambassador - *FRI, SAT. ONLY*
John Oitzinger - Ambassador
Lewis Robinson - Ambassador
Governor's Aide - Foldout Couch on Sunday Night

*RANDY LINK
(CAN TAKE Hibbard's
Bed - SUNDAY*

OLD CABIN/5 PERSONS/2 BDRMS + FOLDOUT COUCH:

- Ray Tilman - Ambassador
John Bailey - Ambassador
Ernie Strum - Ambassador
Bud Lilly - Ambassador/Staff
John Willson - Department of Commerce/Staff

MAIN LODGE/2 BDRMS:

- Audrey O'Connell - Ambassador/Staff
Governor Schwinden - Sunday Night Only

1988
1988 MONTANA AMBASSADORS CATCH & RELEASE
"The Complete Fly Fisher"

FRIDAY, DINNER Chicken in Raspberry Sauce
 Broccoli, Pilaf Rice
 Brioche Rolls, Salad
 Dessert (Trefoil or Chocolate Torte)

SATURDAY, BKFAST Buffet including eggs, bacon, fruits,
 breads, rolls, or muffins

LUNCH Deli Sandwiches/Ham, Salami, Assorted
 Cheeses, Trail Mix, Cookies, Fruit,
 Rotini or Tabouli Salad

DINNER Salmon in Creamed Dill Sauce
 Twice-Baked Potatoes
 Asparagus or Steamed Zucchini
 Salad, Bread or Rolls
 Dessert

"undercooked"

SUNDAY, BKFAST Buffet including an assortment

LUNCH Fried Chicken and Potatoe Salad
 Fruit, Snacks, Cookies

DINNER Black Bean Soup
 Marinated Sirloin Tri-Tips
 Scalloped Potatoes
 Garlic Green Beans
 Dessert

MONDAY, BKFAST Buffet including an assortment

Dave Decker
*Paul Redfern**
Bob Folkdabell
Wayne Clayton
Stuart Decker
Jack Mauer
*Rich Hennegun**
*John Keef**
** Extra Guide*