

THE MONTANA Exponent

Coming University
ers Bobcat Den
Tonight

SUB Theatre
Features "Amahl . . ."
Next Week

No. 9 Montana State College, Bozeman, Montana

Friday, December 4, 1959

PERA IS SCHEDULED DEC. 9

Amahl and the Night Visitors, Christmas opera by Gian-Carotti, will be presented next at the Student Union Theatre December 9 through December 12. MSC students will be free with activity cards.

Reservations for seats may be made by calling extension 254 at the college. Curtain time is 8:15 p.m.

Several outstanding people will appear in the cast of *Amahl*. Playing the part of the little

crippled boy, Amahl, will be Paul Winchester, age 11. It is unusual to find a boy who is able to manage this difficult role. Paul's soprano voice and boyishness add a great deal to the production.

Elaine Coombs, who will play the mother of Amahl, has sung lead roles in many of Menotti's operas; among these are *The Medium* and *The Consul*. She studied in Iowa under Harald Holst, a student of Madame Lotte Lehman. Mrs. Coombs is a soprano but her wide range does not confine her strictly to soprano roles.

Choreographer and dancer for *Amahl* is Harvey Jung who has been a professional dancer in New York for the past several years. He has appeared on the Broadway stage in such musicals as *Damn Yankees* and *New Girl in Town* as lead dancer with Gwen Verdon. He was employed for two years as a dancer with the Metropolitan Opera. He also spent a year in Paris. He has taught classes in New York and his students are now employed all over the world.

Dancing with Harvey will be Marian Place of Bozeman. Marian began lessons at the age of four and has been dancing ever since. She has appeared in numerous reviews and has done solo work as entertainment for organizations in Bozeman.

Last, but certainly not the least, of the MSC *Amahl* cast is Bill Upshaw, who has been a professional singer for the last fourteen years. He studied under Sidney Dietsch, who also instructed Leonard Warren and Jan Pierce. He spent three years touring for the Community Concert Association with the Columbia Operatic Trio and also as a tenor soloist. He has made records with Toscanini and the Robert Shaw Chorale. He sang in the first American presentation of Stravinski's *Renard* with the Ballet Theatre in New York. Among his roles with the NBC opera is one in *Amahl and the Night Visitors*. Last year when NBC presented *Amahl* as a color spectacular on Christmas Eve, he under-studied the role of the King Kaspar and sang in the chorus of shepherds. At MSC, he will sing Kaspar.



Paul Winchester, is reprimanded by his mother, Elaine Taylor, in MSC's production of the Christmas Opera AMAHL AND THE NIGHT VISITORS. This opera will be given at the Student Theatre December 9, 10, 11, and 12 at 8:15 p.m.

Features Added to 'Prospect'

Preparations are now under way for MSC's literary magazine "Prospect." It was originally called the "Word" but was changed to the "Prospect" last year. It is a general magazine appealing to all students on campus. It features novels, poems, satires, short stories, and commercial and fine arts.

"Prospect" is published by the Student Arts Club with the help of Mueller, editor and business manager, Sandy Howell, art

editor, Larry Jacobson and Joe Taylor, associate editors, and Jack Barsness, advisor.

The club hopes to have the "Prospect" available for Winter, Spring, and Summer quarters of the coming year. So take advantage of it, students!

If there are any persons who are interested in writing short stories they are still in demand. It seems there is an overflow of poetry this time. Also photographs and cartoons will be exhibited in this new issue.

Oregon Debaters Argue Question With MSC Team

Debate teams from Montana State College and Portland State College, Portland, Ore., will meet at 4 p.m. Tuesday (Dec. 8) at the student union lounge to debate the proposition—Resolved: That "old soldiers" should fade away.

The debate, which is open to the public, is sponsored by the Great Northern Debate League which is made up of colleges and universities in the northwestern United States as well as the University of Winnipeg in Canada.

On the MSC team are Dave Peterson of Bozeman and Ralph Dougherty of Arlington, Va. Dave Currie and Phil Biddle make up the Portland team.

The Portland team is coached by Ben Padrow while this phase of the MSC forensics program is directed by Dr. N. D. Bryson.

Started in 1957 with four member colleges, the Great Northern Debate League now has seven members with the University of Minnesota at Duluth being the eastern-most member and Portland State the western-most. MSC is the only member in Montana.

Winner of the debate here Tuesday will be determined by audience vote combined with the decision of three judges.

On December 2, Peterson and Patrick Alsup of Shelby composed the MSC team which debated the same topic at Washington State University, Pullman, Wash.

Tickets Needed

Students are reminded that tickets must be purchased for the coming Treasure State Classic. Approved by Student Senate last spring, the tickets will cost fifty cents a night. Tickets will be available in the SUB lobby next Wednesday, Thursday, and Friday. Students must present their activity card when purchasing the tickets.



Rep. Lee Metcalf

Young Democrats Sponsor Metcalf; Meeting Monday

Representative Lee Metcalf will speak to the students and faculty at MSC next Monday at 4:00 p.m. in the Main Lounge of the SUB. The meeting is being sponsored by the MSC Young Democrats Club. Representative Metcalf is expected to speak on the major issues of the last Congress and also will present his views on legislation which may be introduced during the coming 87th Congress.

Recently Mr. Metcalf was appointed to the House Ways and Means Committee, and will speak in part on the problem of taxation.

The MSC Young Democrats are just part of a state and national organization that are active on most college campuses. These clubs have been organized to introduce young people to the members, leaders and ideals of the Democratic Party.

All interested students are urged to attend this oncoming meeting and join the local club. The club has drawn up a tentative Constitution and will hold elections early next January. The coming election year promises to intimately involve the local club in many state and national contests. Membership cards will be available at this meeting at a \$1 fee.

Sonny Holland Chosen To Play In East-West Shrine Game

Sonny Holland of Butte, Montana State's two-time mid-bracket all-America center, will cap a brilliant four-year career by playing in the East-West Shrine football game on January 2 in San Francisco.

By accepting the invitation to join the star-studded 24-man West team, the 6-2, 215-pound Holland will be the first Montana State College player to participate in the annual classic in Kezar Stadium.

Holland said Friday he was very surprised at his selection

and added that he considered it a "great honor" to be chosen.

"I never had any idea when I came here four years ago that anything like this would happen," he said. "I just came down to go to school and had hoped that I could make the football team."

Holland was a starter at pivot for the last four seasons and was an all-Rocky Mountain Conference selection his freshman year. MSC withdrew from the RMC in 1957 but Holland continued to pile up honors.

He was selected first team

mid-bracket All-America center the past two seasons and seems a cinch to repeat this year. Since arriving back in 1956, he started every game through the latter part of this season when he suffered a leg injury in the North Dakota game. It was his first disabling injury in four years.

He missed both the Montana University and San Diego games but is expected to be at full strength for the Shrine game.

During Holland's four years at MSC, the Bobcats won 31 games, lost six and tied one.

He's almost certain to be se-

lected for the professional football draft, but is noncommittal about joining the pros. Upon graduation next June, he's due to receive a commission as a second lieutenant in the Army and will have a two-year military obligation.

Holland is an industrial arts major and has a "B" average in his studies. He is the ranking cadet officer in the Army ROTC program at MSC and holds the rank of cadet colonel. Also, he's one of seven members of September, senior men's honorary at MSC.



Sonny Holland

Editorially Speaking . . .

Group Is Congratulated

The EXPONENT would like to extend a note of congratulations to that handful of MSC faculty and Bozeman townspeople who have continued the fine tradition established by the late Dr. Caroline McGill (see story, page 2).

This museum, although perhaps little known and little publicized, is most certainly a credit to MSC and to the entire State of Montana.

The museum offers not only an opportunity for students and interested persons to observe Montana antiques but it also offers a glimpse into Montana's rich cultural past.

Under the direction of Dr. Merrill G. Burlingame, the group has assembled a truly creditable institution, worthy of every student's support and appreciation.

Letter to the Editor

Student Rebuttal

Dear Editor:

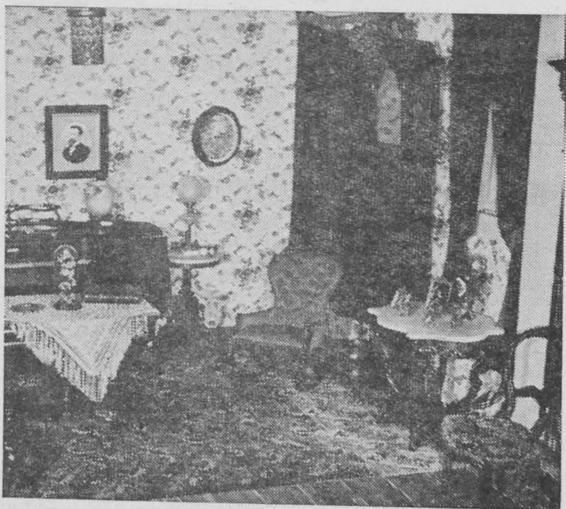
Three weeks ago, World University Service sponsored a campus shoeshine drive whereby the MSC faculty did all the dirty work of shining shoes. There has been some resentment, among the instructors, to this type of activity because it was a "demonstration of humility."

Representing WUS, I would like to take a definite stand to this objection and perhaps clarify the situation. World University Service is an international voluntary organization which operates a program of material assistance and international education to aid the world university community. It is dedicated to today's fight against poverty, hunger, sickness, and despair at colleges and universities everywhere. And to my knowledge, it is the only organization in existence today designed particularly for this purpose.

Part of the WUS program, here at MSC, is its fund-raising activities. And part of this fund-raising program was this controversial "faculty shoeshine." When we chose this activity this quarter, we felt that the faculty would be primarily concerned with the worthwhile aspects of such a function, and the idea of "faculty humiliation" hadn't even entered our thoughts. To those who felt this way, our most humble apologies. But to those who took this activity as a constructive one and in the spirit it was intended, many, many thanks.

Help us build a better world in which to live!

Arjay Godston
WUS Co-chairman



The Victorian Room

The Montana EXPONENT

Member of the Rocky Mountain Intercollegiate Press Association
Acceptance for mailing at special rate of postage provided for in Section 1103, Act of October 3, 1927, authorized February 17, 1919. Continuance of Weekly Exponent and Monthly Exponent founded 1895.
Published every Friday of the college year by the Associated Students of Montana State College, Bozeman, Montana.
Subscription rate by mail to any point within the United States and its possessions is \$2 per college year.

ARTCRAFT 2 PRINTERS

TOM OLSON.....EDITOR
JIM CRAIG.....BUSINESS MANAGER
Gary Brackon.....Associate Editor
Marge Mattson.....News Editor
Judy Dieruf.....Campus Editor
Kemp Wilson.....Sports Editor
Harriet Merna.....Society Editor
Lauren Buckland.....Photography Editor
Ann Schuler.....Office Manager

Curtain Calls

by ANN DUNBAR

The cast for the Winter play, *A Streetcar Named Desire* by Tennessee Williams has been selected by Mr. Fitch. Cast in the lead roles are Marian Place as Stella, Carl Smith as Stanley, Marty Lee as Blanche and Jeff Smith as Mitch. Others cast are Larry Daw, Steve Sevener, Ellen Missall, Ann Dunbar, Jim Larsen, Ivy-Lynn Patapas, Gwen Mindrup, and Neal Roberts. Rehearsals will begin after the Christmas holidays.

The last presentation of Fall quarter by the Theatre Arts Department went into its final rehearsals this week. *Amahl and the Night Visitors* by Gian-Carlo Menotti will open this Wednesday for its first run, Dec. 9 through Dec. 12. This opera is outstanding for many reasons: it has received wide acclaim all over the country and has been presented by a number of colleges and universities as well as professional groups. Several members of the cast have worked professionally and those in the chorus and minor roles have been chosen from the best voices at MSC. *Amahl*, very often played by a woman because of its difficulty, will be sung by an 11 year old boy.

The composer of *Amahl*, Menotti, has been called by Howard Traubman of Theatre Arts Monthly "the most successful writer of opera since Puccini". He was born in Italy and came to the U.S. at the age of 17, having composed songs since he was 6. His first opera, *Amelia Goes to the Ball*, was a success. It was followed by others: *The Medium* which has now had over 1,000 performances including a 6 months run in New York. *The Consul* won Menotti the Pulitzer Prize and the New York Drama Critics Award. Toscanini, a friend of Menotti's, came to a rehearsal of *The Consul*. Half-way through the opera, he silently rose and

walked to Menotti. He embraced him and returned to his seat. During the remainder of the opera, his eyes were filled with tears. Menotti has this quality: he is able to reduce an audience to tears with just a simple melody. He integrates the words of the music so well that one cannot separate them. After a performance of *The Consul*, a man recognized Menotti and she left the theatre. She ran to him and exclaimed, "It's just beautiful! I was so afraid it was going to be an opera!"

The movie this week at Student Union Theatre was *Phantom of the Opera*, one of the greatest horror films ever made. It stars Lon Chaney, a man of a thousand faces, as a mysterious figure who lurks in the dark, gloomy catacombs under an opera house. This is a silent film but the silence is in contrast with today's "talkies" and serves to enhance the suspense. Lon Chaney is still able to do that crawly feeling to the spine of today's audiences.

Unusual Christmas presents are hard to come by these days. The college student can't afford, but they can be found. One is willing to look in HCC Hall on the second floor, Dec. 10 and 11. Each year students and faculty alike spend extra hours and effort to do items for the Christmas Bazaar. Art objects to be sold include copper enameled jewelry, stenciled place mats, rinceplagues, silver jewelry, treen, oil and watercolor paintings, and ceramic pieces. This bazaar has become popular with the people of Bozeman, but MSC students have the advantage of "living right in the door", so take the hint and don't miss the opportunity.

Another annual event of the Christmas season is the Montana State College Christmas Sing, which will be presented Sunday, December 6 at 7:00 in the Old Gym. All living persons perform carols, both familiar and unfamiliar, comic and serious. The college symphony will have an arrangement by Creecholds of the Music Department for the perennial favorite, *Twelve Days of Christmas*. There will be no admission charge and everyone is invited.

Le Roi Smith

Students Raise Chow Gripes; Like Man, Let's Play Hockey

Like, what is all this belly-aching down at the dorms concerning the chow? I've been hearing it for months now, so your mutha decided to check it out, I mean like, play the role of Peter Gum.

In the first place, I remember a time when the boys just refused to eat their vittles at the new dorm. Some crude and slothful souls even went so far as to display their displeasure with the food by redecorating the floor and walls of the chow hall. What more appropriate decor than chow?

So, anyway, all that jazz led to better food, at least claimed the inmates of the dorms. Now a new cry is heard. But, is it idle gripes or is it fact? Like, one gal tells me that she saves up all week so she can enjoy one good meal downtown each week. And the boys are still commenting about some kind of sandwich they received last week.

Actually, guys and dolls, look at it this way. You only pay some fifty-plus bucks a month for chow. Now aren't you ashamed of yourselves? Why, it costs me sixty-five bucks a month to feed myself, a wife, and two kids. You get spinach, I have to settle for steak. You get corned beef, I have to eat tacos. Ah, cruel world.

Anyway, where there's smoke, I expect some fire.

What's all this preparation for winter sports when the weather

dad informs that a balmy season is in store. Accordingly I rushed out and planted an old banana tree that I've been saving since the T. R. campaign in Cuba. Which reminds me, all you drags wearing your white Sox up clear to your pretty little necks — de-sist! I implore thee. Like I dig crazy ankles, and all that related jazz.

All you cats who swing this skating on frozen water stuff should take note. A school hockey team will begin practice this winter quarter. Like they need players. There are only six men allowed in the rink at one time for a team, but the rest fight on the sidelines to provide extra spectator interest. Now this is a way out, sport, what with crazy crooked sticks and a little dealie that scoots around on the ice. They have all sorts of long titles for players such as Pinksters and Pucksters. (Doesn't that last name just clutch you?) The Lions Club is sponsoring the team, and the team is sponsorkink the team, which will play many games towns. One or two games are already scheduled with MSU. So, don't let all the canucks beat you to the gate, call JU 7-7684 or contact Herb McKelvey or Don Hutchinson.

Uniform of the week (Ag students)

Girls: Genuine braided Mexican rope halter.

Boys: Bull whip and spurs.
GoGoGoGoGoGoGoGoGoGo!!!!

McGill Museum Is Formally Opened

The McGill Museum, named in honor of the late Dr. Caroline McGill, will open its doors officially tonight at 7:30.

The idea of the museum, denoting Montana history, was conceived by Dr. McGill who spent much of her time and effort in advancing her conception.

Dr. McGill, who passed away last February, was formerly a doctor of medicine in Butte. She received an honorary degree from Montana State College in 1955. After Dr. McGill's death, Dr. Merrill G. Burlingame was named chairman of the Museum Committee, which is composed of Dr. Ed Booth, Mr. Verne Dusenberry, Dr. Gene Payne, Dr. Sarah Vinke, and Miss Jessie Wilbur; also assisting the college group was a committee composed of prominent Bozeman townspeople.

The museum, which is located at the corner of 11th Street and Garfield Avenue in the former Dairy Barn, is arranged to represent homes of early Montanans. Throughout the museum authenticity is achieved by such diverse items as rosewood furniture, donated by Dr. McGill, to an actual Crow Indian tipi, which was erected by a member of that tribe.

Many of the rooms of the museum are named to represent the style of furniture and furnishings that characterized that era. An example is the Victorian Room whose furnishings exemplified early Montana homes. Other areas of the museum are named: The Library, The Kitchen, The Doctor's Office, and others.

The exhibit contains a Murdock Southwest, Indian collection, The Green loom, the Boze-

man exhibit, The Agriculture Exhibit, The Ladies' Fashion Exhibit, and others.

The Plains Indian Room, in the direction of Verne Dusenberry, of the English Department, offers a unique insight into Indian culture. Mrs. Martha C. Palffy's Indian miniature enhances the display.

In Dr. Burlingame's words, "It is a college museum. Dr. McGill's conviction that the museum would serve as an educational feature. This museum, if supported by students, can very definitely be an educational feature for the students interested in Montana history."

The museum will be open from 7:30 p.m. till 10:00 p.m. tonight and thereafter will serve daily hours from 2 p.m. to 4 p.m. It will also be open to individual groups at pre-arranged times.

LITTLE MAN ON CAMPUS



"BOY, DID YOU GUYS EVER MAKE A LOTTA NOISE COMIN' IN LAST NITE!"

Committee Considers Gripes

The Student Faculty Committee on "gripes" has recently been organized and is now in the process of trying to iron out differences arising between the students and faculty members. Groups or individuals having complaints or suggestions may bring them to this committee for discussion and forwarding to the proper authorities. In the lobby of the SUB is a drop box where students and faculty members may deposit their current "gripes" and suggestions. Problems introduced to the committee in this way will

be discussed in the next meeting of the committee. Should anyone have a complaint he considers worthy of special attention he should contact any of the below listed members of the Committee. The Faculty Committee consists of: James W. Van Winkle of the Economics Department, W. E. Booth of the Botany and Bacteriology Department, Jeanne Claus of the Nursing Department, Ed Hanson of the Welfare Department and Dorothy Kennermer of the Health and Physical Education Department. Students serving on the committee are: Mary Bennett, Sallie Cardwell, Gerald Steele and Gary Thom.

Groups to Sing

Randy Barthelmess, Commissioner of Musical Affairs, announces that this year's Christmas Sing will be held this Sunday evening in the old gym at 7:30. All groups are requested to be at the gym by at least 7:00 so the Sing will be able to begin at the scheduled time. The gym will be open for rehearsals Sunday afternoon from 2:00 till 5:00. Any group that has not contacted Barthelmess about rehearsals and any other scheduling times should do so.

INTERVIEW SCHEDULE

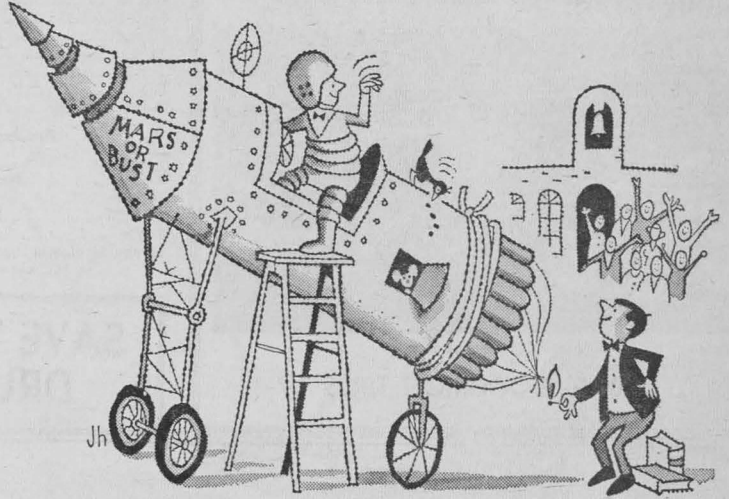
Brick Breeden of the Placement Office has released the weekly schedule of interviewing companies. Breeden's release shows the Westinghouse Corp., City of Los Angeles, IBM Corp., Universal Oil Corp., and Lever Brothers Corp. scheduled for December 4 - 11. Any interested students are urged to contact the Placement Office for appointments. The schedule is:

- Dec. 4—Westinghouse _____ E.E., M.E.
- Dec. 4—City of Los Angeles (Dept. Water & Power)—C.E., E.E., I.E., M.E., Sanitary & Power Eng. _____ E.E., M.E., I.E.
- Dec. 10—Data Processing Division, IBM _____ E.E., M.E., I.E.
- Dec. 11—Universal Oil Products _____ Chem., ChemE.—BS, MS, PHD
- Dec. 11—Lever Brothers _____ Commerce, Ag. Econ, IA and Gen. _____

Currie, if some commerce and accounting groups

Do You Think for Yourself?

(TEST YOUR WITS ON THESE QUESTIONS*)



The statement "Experience is the best teacher" is (A) the faculty's confession of failure; (B) a dogmatic way of saying you can learn by doing; (C) an excuse for trying anything once.

A B C

GIVE A BOOK for Christmas

ASSOCIATED STUDENTS' STORE



If someone called you a beatnik, would you (A) insult him right back? (B) ask him if he knows what a beatnik really is? (C) thank him for the compliment?

A B C



If you saw a dinosaur roaming around the campus, would you say, (A) "Big, ain't he?" or (B) "Where's the movie playing?" or (C) "This place is sure out of date!"

A B C



Do you base your choice of a cigarette mostly on (A) what your friends say they like? (B) what your own judgment tells you is best? (C) what the makers say about their product?

A B C

It's a wise smoker who depends on his own judgment, not opinions of others, in his choice of cigarettes. That is why men and women who think for themselves usually smoke Viceroy. They know only

Viceroy has a *thinking man's filter*—the best filter of its kind ever developed . . . the filter that changed America's smoking habits. And only Viceroy has a *smoking man's taste*.

*If you checked (B) on three out of four of these questions, you're a high-test character—you think for yourself!



The Man Who Thinks for Himself Knows— ONLY VICEROY HAS A THINKING MAN'S FILTER... A SMOKING MAN'S TASTE!

Kingston Trio's Latest Album
"Here We Go Again" . . . \$3.98

available at

ELITE NOVELTY RECORD SHOP

104 West Main Street — Across from Baxter Hotel
RCA, PHILCO, PACKARD BELL TV'S, RADIOS and STEREO PHONOS
Sales & Service. We repair all makes and car radios
— We Give S & H Green Stamps —

Don Lock's Super Service

PHONE JU 6-6945



— Conveniently Located —

AT 10TH AND COLLEGE TO SERVE YOU
AND YOUR AUTOMOBILE REPAIR NEEDS



— Distributor For —

B. F. GOODRICH TIRES

Final Exam Schedule

I. Final Exam Schedule for all sections of the following courses:

Chem 101, 103, 111, 201, 203	9:00 to 10:15 a.m., Thurs., Dec. 17
Chem 101 (Tu sections, in addition to above)	
	5:30 to 6:30 p.m., Thurs., Dec. 17
Bot 102	7:30 to 9:20 p.m., Thurs., Dec. 17
Mech 305, 306	7:30 to 9:20 p.m., Thurs., Dec. 17
Econ 201, 205	7:30 to 9:20 p.m., Wed., Dec. 16
Eng. 101, 102, 103, 111, 112, 113	1:30 to 3:20 p.m., Thurs., Dec. 17
Hist. 105	1:30 to 3:20 p.m., Wed., Dec. 16
Math 101, 102, 103, 104, 111, 112, 201,	
202, 203, 301	9:00 to 10:50 a.m., Wed., Dec. 16
Hist. 255	7:00 to 8:50 a.m., Fri., Dec. 18
Phys. 111, 205, 227, 228, 229, 230	9:00 to 10:50 a.m., Fri., Dec. 17
Soc. 201, 205	7:30 to 9:20 p.m., Fri., Dec. 18
Spch. 150	1:30 to 3:20 p.m., Thurs., Dec. 17
Com. 217, 225	9:00 to 10:50 a.m., Sat., Dec. 19
Psych. 201, 205	1:30 to 3:20 p.m., Fri., Dec. 18
H Ec. 105	9:00 to 10:50 a.m., Fri., Dec. 18

II. Final Examination in all other courses will be given as follows:
If the first lecture of lab hour for the course is held at the hour listed, the final examination will be held at the time designated.

Monday

8 a.m.	11:00 to 12:50 noon, Thurs., Dec. 17
9 a.m.	11:00 to 12:50 noon, Wed., Dec. 19
10 a.m.	11:00 to 12:50 noon, Sat., Dec. 19
11 a.m.	11:00 to 12:50 noon, Fri., Dec. 18
1 p.m.	7:00 to 8:50 a.m. Thurs., Dec. 17
2 p.m.	5:30 to 7:20 p.m. Fri., Dec. 18
3 p.m.	7:00 to 8:50 a.m. Wed., Dec. 16

Tuesday

8 a.m.	3:30 to 5:20 p.m., Fri., Dec. 18
9 a.m.	7:00 to 8:50 a.m., Sat., Dec. 19
10 a.m.	3:30 to 5:20 p.m., Wed., Dec. 16
11 a.m.	3:30 to 5:20 p.m., Thurs., Dec. 17
1 p.m.	5:30 to 7:20 p.m., Wed., Dec. 17
Irregular classes not represented	
	in the above hours 5:30 to 7:20 p.m., Thurs., Dec. 17

**SAVE WAY
DRUG**

—★—
"We Sell for Less"
—★—
44 EAST MAIN STREET

Democratic Club Schedules Work

State Representative Wold (D-Yellowstone) will be the featured speaker at the Thursday, December 10, reorganization meeting of the Young Democrat Club.

According to Grace vice-chairman of the Montana Democratic Control Committee, Wold will discuss organization of the club and also tell of the problems facing the legislative session. Wold is a member of the controversial legislative Highway Investment Committee.

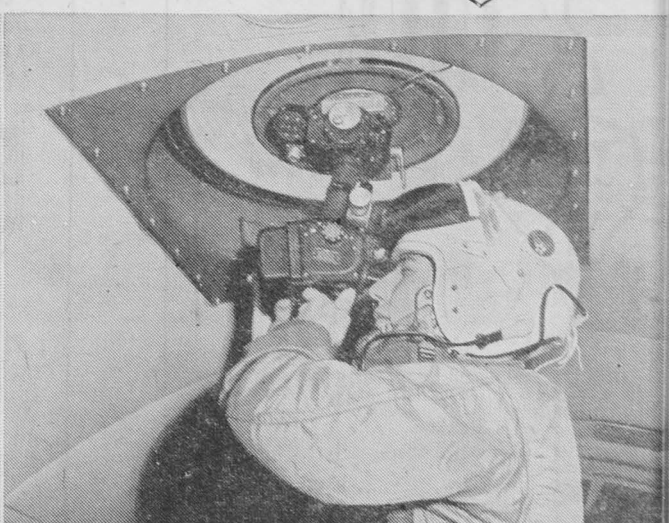
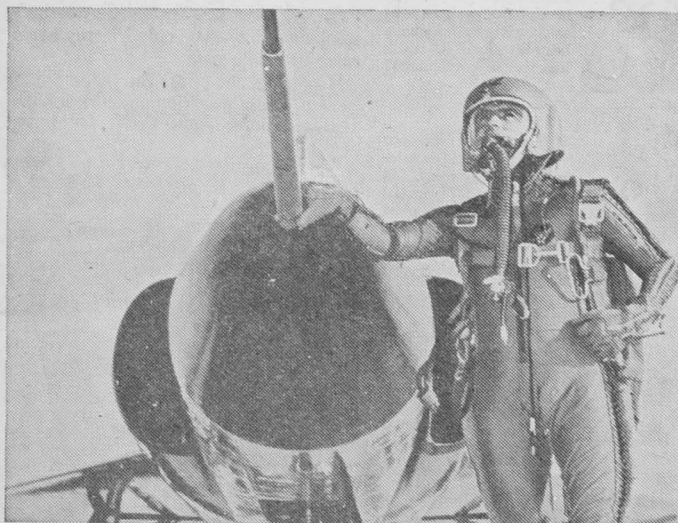
The meeting is scheduled 7 p.m. in the SUB.

MSC Nurses Elect Officers

The Montana Student Nurses Association, at a recent meeting of reorganization and elections, elected the following officers:

President: Loretta Maud Billings, Montana; Vice President: Mary Lou Brown, Montana; Secretary: Jane Rena, Gillette, Wyo.; Treasurer: Grace Ulvang, Berkeley, California; Social Chairman: Norma Howell, Missoula, and AWS Representative: Lynne Waid, Prior, Okla. with Mary Daily of Great Falls as the alternate. Mrs. Daily is the group's sponsor.

THERE'S AN IMPORTANT FUTURE AHEAD FOR THE MEN WHO WEAR THESE WINGS



The Air Force pilot or navigator is a man of many talents. He is, first of all, a master of the skies—and no finer exists. In addition, he has a firm background in astro-navigation, electronics, engineering and allied fields. Then, too, he must show outstanding qualities of leadership, initiative and self-reliance. In short, he is a man eminently prepared for an important future in the new Age of Space. Find out today if you can qualify as an Air Force pilot or navigator. Paste the attached coupon on a postal card and mail it now.

MAIL THIS COUPON TODAY

Aviation Cadet Information, Dept. A-9
Box 7608, Washington 4, D. C.

Please send me details on my opportunities as an Aviation Cadet in the U. S. Air Force. I am a U. S. citizen, between the ages of 19 and 26½ and a resident of the U. S. or possessions. I am interested in Pilot Navigator training.

Name _____ College _____
Street _____
City _____ Zone _____ State _____

GRADUATE THEN FLY

U. S. AIR FORCE AVIATION CADET PROGRAM

Opinionated Speak What You Think, But Think

by Bobbe Garry

Never sit in the SUB, or almost anywhere, for that matter, and listen to the paramount issues being discussed? Now I'm well aware that everyone has his own share of problems, and it's rather hard to find a sympathetic ear in which to unload them, whether your problem for the moment happens to be the un-graded in the class before or the fact that you are completely at a loss when it comes to finding a date for the Mortar Board race. Not only are these issues of profound interest to your neighbor but they are also character-building and the basis for stirring intellectual curiosity.

And there are few revelations more stimulating than to learn who is on the skids with whom. Telling you, there is nothing but an hour of chit-chat to make you feel like you've really accomplished something.

When there's the inevitable opportunity. Act One, Scene One. Four people seated around a thought. Everyone is inspired to contribute an idea beyond the other person's. Act Two, Scene One. The thought has progressed to the limits of basic understanding but the trend is still climbing upward and onward. By this time there are two possibilities in general mood. Either everyone is in agreement or violently in disagreement. But still the ideas keep coming and any semblance of understanding flies through the window. By the time the act is over the original thought has also flown out the window and has been replaced by concepts too deep to explain. However, everyone has a nice

PEANUTS



orange feeling and this makes up for the fact that nothing was accomplished.

Rather than appear to be defeating my own purpose, let me hasten to add that, and for this I must give credit to Emerson, thinking does not come by accepting that which is already known but by using these thoughts as instruments for progress.

HELP WANTED

Student wife to care for children in my house — hourly and occasionally all day.

CALL JU 6-2791

ELLEN

FIVE GATES TO HELL
THROUGH SATURDAY

PILLOW TALK

Rock Hudson - Doris Day
SUNDAY - SATURDAY

RIALTO

DAY OF THE OUTLAW
Burl Ives
THROUGH SATURDAY

GRAPES OF WRATH
and
TOBACCO ROAD
SUNDAY - WEDNESDAY

LEVI STRAUSS
CONTINENTAL
WASH and WEAR
SLACKS
Sizes 28 - 38
\$6.95

STEVE'S
Country Store
137 East Main

SKI?

Let Us Clean and Water Repel

Your Ski and Sports Clothing

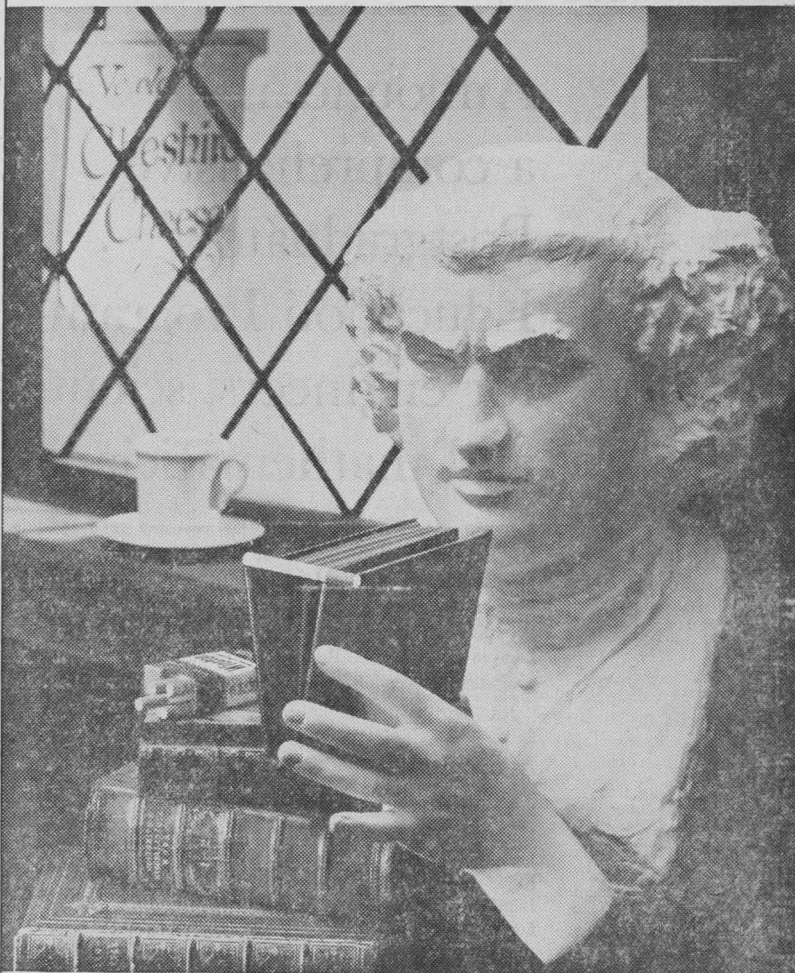
EAGLE CLEANERS

DAS and HAZELLE

— Phone JU 6-5339 —

FREE PICKUP and DELIVERY

Dr. Johnson turns another elegant phrase:



*Sir, if it hasn't got it there,
it hasn't got it!*

Old Dr. Sam has done it again—brought his dictionary up to date in terms of modern Winston usage.

Winston (win'ston), n. A cigarette with Filter-Blend on one end and a wise man on the other.

Taste (tāst), n. What decorators argue about and Winston smokers enjoy.

Filter-Blend (fil'tēr-blēnd), n. A happy marriage of art and science. Light, mild, flavorful tobaccos are artfully selected, then scientifically processed for filter smoking.

Slogan (slō'gān), n. (e.g., Winston tastes good like a cigarette should). A statement of disputed grammar but unquestioned fact.

Front (frūnt), n. (used in conjunction with the preposition "up"). The section of a filter cigarette where if it hasn't got it, it hasn't got it. Also, the section that counts, the section where exclusive Filter-Blend is to be found.

Boswell (bōz'wēl). Nickname for a guy who is always hanging around to eadge Winstons from you.

"There is nothing which has yet been contrived by man by which so much happiness is produced . . ."

Boswell's Life of Dr. Johnson, Vol. 1, Page 620

SOUND OFF . . .

by Nancy Place

Thanksgiving has come and gone—cranberries or no cranberries—and once again the last lap of Fall quarter is before us. It's a rare person who at this point isn't swamped with tests, reports, term papers, projects or coordination exercises before the final curtain falls.

Tom Turkey wasn't even picked clean before the sound of Christmas carols came blasting forth from the radio stations or the newspapers boasted notices of "shopping days until Christmas."

From the number of boxes of goodies brought back to campus,

it seems appropos to assume that eating at home was a real treat from the noodles, marshmallow topping, pimento, nuts and soggy toast we've grown so accustomed to at college.

At last, long last, some headway is being made toward a new social regulation in women's residences on campus. It is hoped that each girl will read and weigh carefully the proposed change before casting her ballot on Tuesday.

It's a sure sign that the next blizzard won't blow in until the end of final week when everyone is blasting off for home—the gods would have it no other way.

Attention Skiers! Party to Be Held

Attention all skiers! Ski club party to be held Friday, December 4, at Bear Canyon. Skiing will begin at 7 p.m.—snow permitting. If there is no snow the party will still be held at the Bear Canyon ski lodge.

To be admitted to the party a person needs an MSC ski club membership. Memberships will be available Friday night at the hill. With this membership a skier won't have to purchase a tow ticket. Also this membership entitles a person to ski anytime at Bear Canyon for a dollar instead of a dollar and seventy-five cents.

Women Vote on New Hours

On Tuesday, December 8, all women students of MSC will vote on the newly proposed change in social hours. It is hoped that this vote will thereby make official whether it is a vocal minority or a majority of the girls on campus who wish this change. The proposal is:

Social hours will be in effect from 1:00 p.m. - 7:30 p.m. (As it is now, the period from 1:00 - 4:00 is closed to social calls in the women's residences.) At the time of this vote, it will be decided whether these new hours

will be for studying purposes only, or for socializing.

Each sorority house and girls' dorm will be provided with lots on Tuesday and the girls will vote in their respective residences.

It is hoped by AWS that before voting, girls will consider the pros and cons to this change.

CONS:

1. Upperclasswomen are thising only of themselves. Freshman girls need an ad boost to help them study.
2. The Dean's Council has some proof that MSC has a good set-up for study regulations for parents' of students.
3. Girls have plenty of time to be with boys during the day. If this period is kept as is they will have the Student Union and the library in which to study.
4. Most girls and boys are in classes from 1-4 and the regulations as set up at the present help ward off curbing classes to meet boy friends at the SUB, or more conveniently at their houses.
5. This added "free period" could become out of hand, especially during Spring Quarter. If the girls in the 1-4 groups, namely the Q's, wish to study during this afternoon IN THEIR OWN HOUSES, their privacy will be taken away if several fellows suddenly invade their house.
6. As it is now, housemen can and will make allowances for the exception—if it is explained to them. Why take the privacy away where they have so much to give us so little to gain?

PROS:

1. Since girls are free to go and go as they so please until closing hours this change will allow girls to have guests in their living quarters during these same hours instead of having to use the SUB, library or curbing.
2. The lounges in dorms and living rooms in the houses designed for entertaining guests and their use will not be restricted to 4:00 hours.
3. It is not that this new regulation will make a decreasing amount of social on the campus, it is that if studying or with boys is desired after 4:00 p.m. it can be done.
4. Restricting the social isn't going to give much boost to any freshman studying habits when permitted to leave their residence during these same hours.
5. If girls are going to do es it would seem reasonable to assume that this will be done whether or not these extra free hours.
6. It is doubted that literally going to "invade" houses and make such as to disturb those upstairs.
7. If the Dean's Council has proof that MSC has a good social and studying habits, then they should encourage the phrase "your boy friends to yet."

If passed, this new regulation will affect all women's residences on campus. Support your Council by voting on December 8.

Announcing a comprehensive Postgraduate Education Program for engineers, scientists and mathematicians

Ever since the founding of the company some forty years ago, IBM has recognized education as an integral and continuing part of a professional person's life. Through formal educational programs within the company, and through affiliations with universities, it has long been possible for IBM employees to earn scholastic credits. Now a comprehensive Postgraduate Education Program, surpassing any previous program, has been initiated at IBM for plant and laboratory personnel.

ADVANCED DEGREE UNIVERSITY PLAN

A qualified engineer, scientist or mathematician, who has been with IBM at least a year, may compete for a fellowship or a scholarship in selected fields at the university which he believes offers the finest opportunities for advanced study. All benefits that would normally accrue if the candidate were on active employ-

ment will be retained.

• *Doctoral Fellowships:* Selected candidates will receive full tuition, fees and regular salaries for full-time study up to three years.

• *Masters' Scholarships:* Selected candidates will receive full tuition, fees and regular salaries for an academic year of full-time study.

ADVANCED DEGREE ON-SITE PLAN

A qualified engineer, scientist, or mathematician may undertake part-time graduate studies at an IBM plant or laboratory, concurrent with active employment.

• *Masters' Degrees:* Candidates may complete their studies at company expense under various programs operated in conjunction with universities near IBM facilities.

ADVANCED STUDY PLAN (NONDEGREE)

These studies offer continued educational opportunity throughout a career at IBM. They are not generally degree-oriented. Given at or near IBM facilities, they are designed to help retain mastery over basic engi-

neering, science, and mathematical subjects and to gain knowledge in advanced fields such as number theory, finite mathematics, magnetism, solid state physics, and network analyses.

For a descriptive folder about the new IBM Postgraduate Education Program, write to:

MANAGER OF ENGINEERING EDUCATION, DEPT. 843, IBM CORPORATION, 590 MADISON AVENUE, NEW YORK 22, N. Y.



BOBCATS TO HOST TREASURE STATE CLASSIC DEC. 11-12

Montana basketball fans will be able to see what Montana coach Dobbie Lambert labors to do with "college basketball at its best" next weekend when three of the country's top cage teams—the Bobcats in the first round of the Treasure State Classic.

The tournament opens at 7:30 p.m. on Friday, Dec. 11, with two rounds of play. The NCAA champion San Francisco State University meets Oklahoma City University. MSC meets the University of Oregon at 9:15 p.m. The games meet for consolation at 11:30 p.m. on Saturday, Dec. 12, with the championship game set for 9:15 p.m. Although many ticket inquiries have been made, there is no anticipated shortage of good seats for the two-day event. Every seat is a good one in the 10,000 capacity fieldhouse and the giant arena should easily accommodate the huge throngs. The largest crowd to see a basketball game in the huge structure was the 10,200 who saw the Bobcats play Seattle University two years ago.

Seedings have been made for the Treasure State Classic, but the favorite's probably would have to go to the powerful Chieftains of Oklahoma City. The Chiefs return with a five starters from last year's club which won 20 games and lost only seven. In addition,

Bobcats Feature Board Power

Five weeks of grueling practices and grueling seasons have convinced basketball coach Dobbie Lambert that the 1959-60 aggregation will be the strongest rebound team in recent seasons at Montana State College.

They may partially offset our lack of experience with good rebound strength," Lambert said. "I don't have the awesome rebounding of some clubs we'll meet, but we've got good over all size." The Bobcat frontline averages six feet, four and one-half inches tall and boasts good speed. The top man for MSC in practically any department is senior Larry Chanay, a 6-4, 185-pound rebounder. Chanay led the team rebounding last winter and sophomore Armand Erias, 6-2, 212, look to be the best "boardmen" for the team. Lambert believes that with experience, Erias could become the No. 1 rebounder.

Although he isn't a great rebounder, he's extremely aggressive and uses his weight to good advantage.

Players with good speed and rebounding potential are forwards John Bryant, 6-4, 195; Bratton, 6-4, 185; Bert Emery, 6-3, 185, and center Bob Erias, 6-6, 200. Gordon Hauke, 6-3, 210-pound sophomore from Billings, is greatly valued and could become a star by mid-season.

Chanay is the only man on the team, however, that has had previous varsity experience.

One thing is certain, height on our team's club is far superior to last year's 1958-59 crew. Only three of the top eight men on last year's team stood over six feet: Chanay, Tom Kelly and 6-5 Len Broz. The team's guards will average just five feet six inches. Lettermen Jimmy and Jim Owens each averaged 15-10 and service returner Matson is 6-1. Sophomore Markins is 6-2 and soph Tom Erias is 6-0. Matson can also play the forward position and is a rebounding guard.

tion, OCU won the annual All-College tournament in Oklahoma City and won a berth in the National Invitational Tournament in New York last spring. OCU already has been seeded No. 1 in this year's All-College meet.

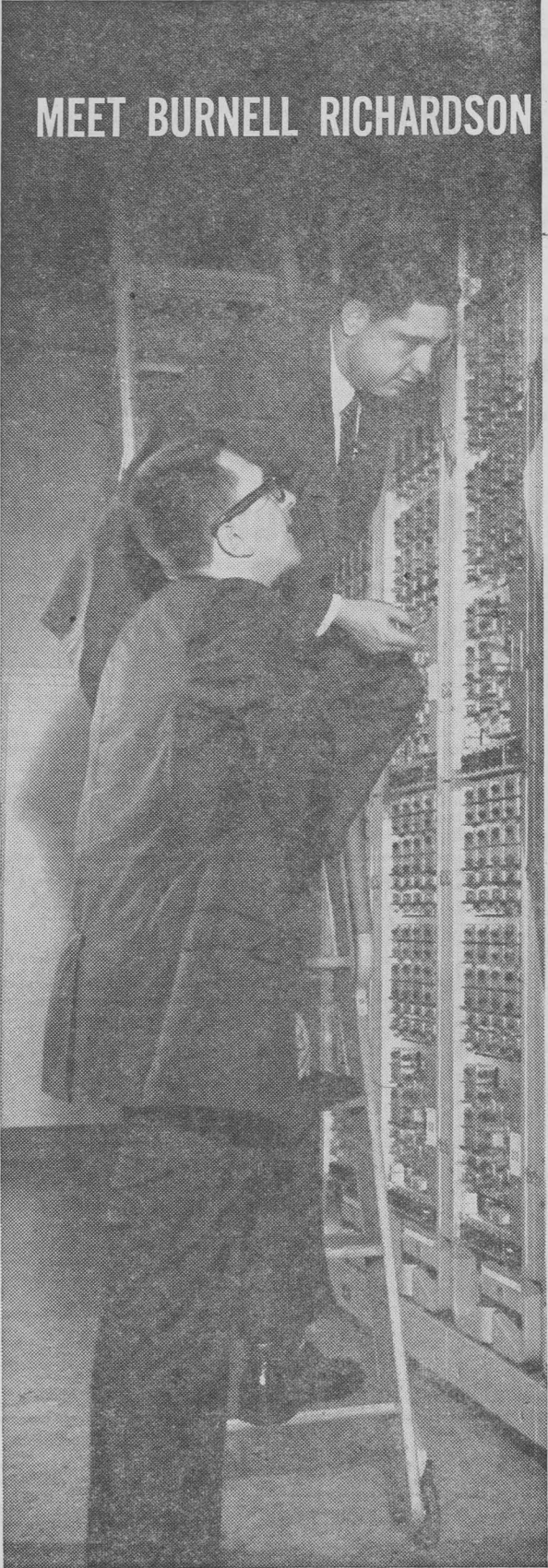
Appropriately, the Chiefs are paced by a pair of Kiowa Indians, Fred Yeahquo and Bud Sahmaunt. Sahmaunt, a quick little guard, was voted the most outstanding player of last winter's All-College meet.

Oregon looks to be the best bet to challenge OCU for the championship. The Webfoots, coached by wily Steve Belko, return four starters from last year and have many good newcomers from the unbeaten 1958-59 freshman team.

Belko, who like Lambert is a native of Indiana, compiled a fine record at Idaho State College before moving on to the West Coast. MSC and San Francisco both

are relatively inexperienced but easily could upset the dope chart the first night. USF has a potential all-America selection in 6-5 Fred LaCour while MSC's top hand is Larry Chanay. The 6-4 senior speedster averaged 20.9 points per game and was the Cats' top rebounder last year.

are relatively inexperienced but easily could upset the dope chart the first night. USF has a potential all-America selection in 6-5 Fred LaCour while MSC's top hand is Larry Chanay. The 6-4 senior speedster averaged 20.9 points per game and was the Cats' top rebounder last year.



MEET BURNELL RICHARDSON AND DICK MASLOWSKI

They're transmission engineers with Michigan Bell Telephone Company in Detroit. Burnell graduated from Western Michigan in 1951 with a B.S. in Physics, spent four years in the Navy, then joined the telephone company. His present work is with carrier systems, as they relate to Direct Distance Dialing facilities.

Dick got his B.S.E.E. degree from Michigan in 1956 and came straight to Michigan Bell. He is currently engineering and administering a program to utilize new, transistorized repeater (amplifier) equipment.

Both men are well qualified to answer a question you might well be asking yourself: "What's in telephone company engineering for me?"



SAYS DICK:

"There's an interesting day's work for you every day. You really have to use your engineering training and you're always working with new developments. Every time Bell Laboratories designs a new and more efficient piece of equipment, you are challenged to incorporate it in our system effectively and economically. For example, I have been working on projects utilizing a newly developed voice frequency amplifier. It's a plug-in type—transistorized—and consumes only two watts, so it has lots of advantages. But I have to figure out where and how it can be used in our sprawling network to provide new and improved service. Technological developments like this really put spice in the job."



SAYS BURNELL:

"Training helps, too—and you get the best. Through an interdepartmental training program, you learn how company-wide operations dovetail. You also get a broad background by rotation of assignments. I'm now working with carrier systems, but previously worked on repeater (amplifier) projects as Dick is doing now. Most important, I think you always learn 'practical engineering.' You constantly search for the solution that will be most economical in the long run."

There's more, of course—but you can get the whole story from the Bell interviewer. He'll be visiting your campus before long. Be sure to sit down and talk with him.

BELL TELEPHONE COMPANIES



Northern Conference Planned

"A new conference may soon be formed in the northern border states," reported Montana State College President R. R. Renne.

Dr. Renne just returned from a meeting in St. Louis, Mo., and reported that there was a very favorable reaction from representatives of all the schools interested, and that they all agreed to looking into all possibilities of forming such a conference.

Schools that would be included are: North Dakota State College, University of North Dakota, University of South Dakota, South Dakota State College, Idaho State College, University of Idaho, Montana State University, and Montana State College.

Many names were brought up for the conference, but the three most favorable are: The Northwest Conference, The Great Northern Conference, or the Northern Border Conference.

WHITE'S PHARMACY

Where Friendly, Courteous Service Is a Pleasure

— WE CASH YOUR PERSONAL CHECKS —

IF YOU SKI—YOU MUST SEE

The Latest in Exclusive Imported Sweaters
Bogner Stretch Pants and Clothing
Complete Stock of SKI BOOTS
Try Your Size Now While Available

The SPORT CHALET

116 South Tracy

Dial JU 6-6125

THE PERFECT CHRISTMAS GIFT



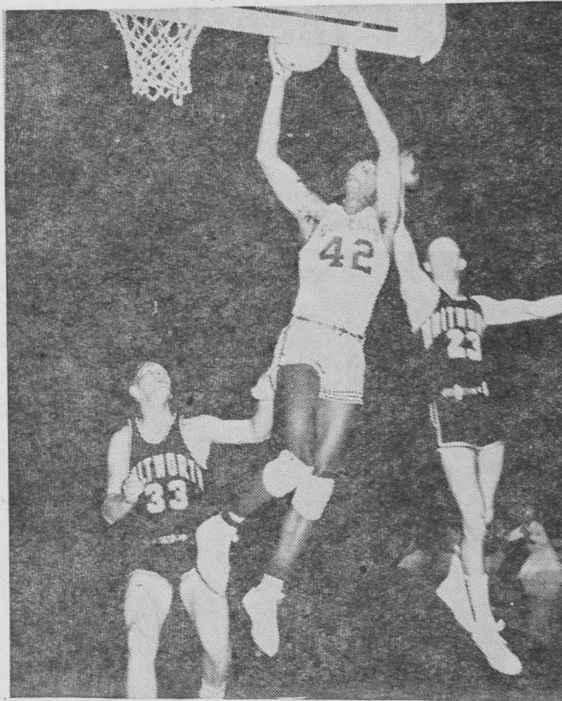
BOWLING EQUIPMENT

BY BRUNSWICK

As Low as
BALLS \$26.00 — SHOES \$6.95
BAGS \$3.95

Miniature Ball Gift Certificates
Exclusive Custom-matic Bowling Ball Fitting and
Custom Drilling Service

Student Union Game Room



"Mr. C." goes in for a layup in the game with Whitworth last Thursday night. Chaney scored 29 points followed by John Bryant with 19. The Cats trounced Whitworth a sound 106-65.

MSC Routs Whitworth

A big, fast and aggressive Bobcat basketball team won their season opener Tuesday night whipping Whitworth 106 to 65. The Pirates were out-classed from the start and the Cats quickly pulled away and led 54-35 by the half.

Early season roughness was apparent but Lambert's men gave notice of the type of ball MSC cage fans can expect during the rest of the season. Head coach Dobbie Lambert was able to clean his entire bench to get

some much needed experience for his reserves.

This year's Cats are probably about the tallest and biggest team that MSC has been able to field in the last few years. Bob Bradley at 6' 6", John Bryant at 6' 4", along with 6' 4" Larry Chanay provide aggressive power under the boards. Both Bradley and Bryant are Junior College transfers. This height, along with the shooting and speed of guards Jim Owens, Jim Murphy, and Tom Sawyer should boost the Bobcats to a winning season record.

DURAND'S JEWELRY

WATCHES and DIAMONDS

3 East Main

Phone JU 6-2486

IT PAYS TO LOOK WELL GROOMED

With a Haircut At . . .

DON'S BARBER SHOP

3 South Black

Under Saweway Drug

SKI and COLLEGE SHOP

1007 West College in West Gate Village

OFFERS YOU SKI SALES - SERVICE - RENTALS

SKIS — Hart, Kneissl, Kastle, Nordland

BOOTS — Molitor and Ricker

SKI FASHIONS — Bogner and Sportcaster

Store Hours: Every weekday, 9 a.m. - 9 p.m.
and Sunday 9 a.m. - 1 p.m.

Kittens to Open Season Against Glendive Cage

Emphasis is being placed on basic fundamentals as Coach Rousey prepares the Montana State College freshman basketball team for its opener Jan. 15 against Glendive State College.

The Jan. 15 contest kicks a 10-game schedule which includes games against Miles City State College, Sheridan (Wyo.), College and Idaho State College freshmen. All home games will be played as preliminary varsity tilts.

Heading the 11-man squad are four Montana all-state selections: Hans Fedge, Great Falls; Pramenko, Missoula; Tom Helena, and Bob Hoppe, Bozeman.

Other frosh candidates are Williams, 6-1, Conrad; Benning, 6-4, Stockett; Neal Lear, 6-0, Chilocco; O'Neil Fischer, 6-2, Quincy, Illinois; Eder, 6-1, Billings; Gary, 6-2, Bozeman; Brent Rasnitsin, 6-3, Chicago Heights, Illinois.

The complete schedule includes: Jan. 15-16, Glendive JC, at Bozeman; Jan. 22-23, Miles City State College; Jan. 28-30, Miles City; Jan. 28-30, Miles City; Feb. 1-2, Idaho State frosh, at Bozeman; Feb. 2-3, Idaho State frosh, at Bozeman; Feb. 26-27, Miles City, at Bozeman.

Matmen Practice

MSC's wrestling team practices this week for one of the toughest schedules in school's history. The team meets with teams from the University of Washington, Washington State, University of Utah, Brigham Young, and Utah State.

Last year's MSC wrestling team was unbeaten, winning dual meets and two tournament championships.

This year Coach Bozeman's potential backing for a strong team. There are returning lettermen, head Art Althoff, 177, and sophomore Brent Hall, 157, and senior Puzocher, 130. All three defeated records last year. Returning lettermen are senior man, 123; Archie Eves, head, 147; and Doug Poole, 147.

MSC's wrestling team's first meet December 15 at South Dakota Tech at Rapid City, South Dakota.

1959-60 Schedule:
Dec. 11—South Dakota Tech at Rapid City, S. Dak.

Dec. 12—Black Hills State at Spearfish, S. Dak.

Jan. 17—Utah State at Logan, Utah

Jan. 22—U. of Washington at Seattle.

Jan. 23—Triangular meet at Pullman, Wash. (Wash. State, Oregon, MSC).

Feb. 6—Black Hills State at Bozeman.

Feb. 20—South Dakota at Bozeman.

Feb. 26—Brigham Young, Provo, Utah.

Feb. 27—Utah State at Logan, Utah.

WAGNER'S

16 EAST MAIN

"College Men Like Our Clothes"



HOME OF NATIONALLY
ADVERTISED BRANDS



Volkman, SAE, (pictured left) and Jack Cochrane, SN, grunt and groan in their match during the intramural wrestling meet. Volkman won the match by a decision and went on to capture the championship in the 137 weight class.

Wrestlers Capture IM Wrestling Meet

The Alpha Epsilon fraternity took top honors in this year's intramural wrestling meet, as they won five of the nine weight classes, and scored 165 points to place Sigma Chi's 114

points in the individual matches, with Pasha of the AGR house winning the 123 lb. class; Pasha won the 10 lb. bracket for SX; Volkman, Martin, and Cashmore added to the SAE cause as they won the 137, 147, and 157 lb. divisions respectively; Lindgren of the Independents won the 177 lb. class; SAE's Blackwood won the 177 and 187 lb. divisions; and Castle of the AGR won the heavyweight title.

Points for IM wrestling as follows:

SAE	165
SX	114
SN	46
PKA	32
Ind	28
PSK	20
KS	13
LXA	8
DSP	7
AGR	6

See Russia in 1960

Student/Teacher summer tour of Russia and Eastern Europe. American conducted, from \$495. by Motorcoach. 17-days tour of Warsaw or Helsinki. Visit rural areas and major cities. Grand Tour. Russia, Poland, Czechoslovakia, Scandinavia, Europe highlights. Regiate Circle. Black Sea, Russia, Poland, Czechoslovakia, Scandinavia, Benelux, W. Europe. Europe Adventure. First time. Bulgaria, Roumania, Poland, Czechoslovakia, West-Pe scenic route. Your Travel Agent or write Dupintour, 104 E. Main, New York 17, N. Y.

Cowpokes to Face Bobcats

Eight o'clock tonight is tip-off for the first game of a double-header between the Bobcats and the University of Wyoming. The last time the Bobcats met the Cowpokes, they defeated them, which was in 1956. The series score between the teams is: Montana State 7 wins, and Wyoming 22 wins. The Bobcats will be looking for revenge, trying to settle the lopsided margin between the teams in series play.

Bill Strannigan, Wyoming's new coach, who succeeds Everett F. Shelton, says this, "We have good size, we should rebound well, and judging by what the team has shown, we won't be outscrapped by anyone." This means that the Bobcats will be up against a club that is on-the-ball and ready for their season opener.

Wyoming has seven lettermen returning to the team but lost Tony Windis, an all-time great. The probable lineup for Wyoming will be: Bertolero, 6-3, and Lively, 6-8, at the forwards; Hulsebus, 6-7, at center; and Happel, 6-1, and Hadden, 5-11, at guards.

Coach Lambert will probably pick his starting lineup from five of seven players; forwards will be Larry Chanay, 6-4, and either Armand Erias, 6-3, or John Bryant, 6-4; Bob Bradley, 6-6, will be in the center slot with the guard positions filled by Jim Murphy, 5-10, Jim Owens, 5-10, or Andy Matson, 6-1.

GALLATIN TRUST AND SAVINGS BANK

Bozeman, Montana



An Independent Bank
In Business Since 1902

WIN GUESS SCORE OF EACH SATURDAY BOBCAT GAME **WIN**

FROSTOP DRIVE INN

Open 12 - 10 p.m. — Sunday - Thursday
12 - 3 a.m. — Friday and Saturday
— Phone JU 7-3855 —

TWO FREE CHICKEN IN THE BASKET DINNERS GIVEN AWAY EACH WEEK FOR CLOSEST SCORE

Just Clip This Ad Out and Mail or Drop off at the Frostop. Entries must be in not later than Thursday for following Saturday's game.

MSC..... GO CATS GO OPP.....

Turn CHRISTMAS CHECKS Into ThriftiChecks



You'll make your Christmas dollars go further — and start the New Year right financially — if you use Christmas checks to open a ThriftiCheck Personal Checking Account. Give yourself this business-like present and enjoy year-long satisfaction in bill-paying ease, economy and efficiency. See us soon about...

ThriftiCheck

AMERICA'S MOST POPULAR CHECKING ACCOUNT SERVICE available at

First National Bank

104 E. Main JU 6-5481

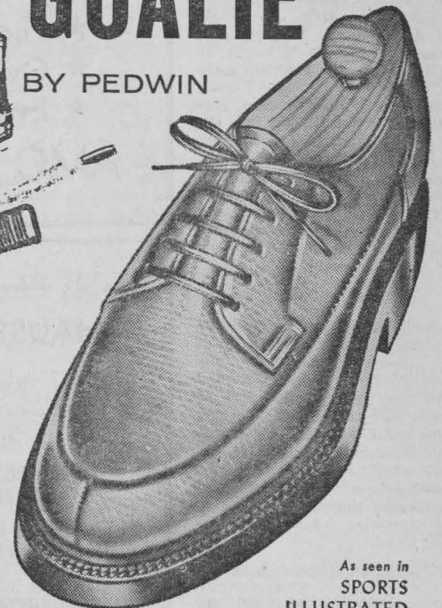
pedwin

young ideas in shoes

WHEN EXPERT PERFORMANCE COUNTS!

GOALIE

BY PEDWIN



A slick number in style and comfort... casual styles for fall will include this rugged lightweight... come in today and add this Pedwin to your wardrobe. \$11.95

Egbert's SHOES

As seen in SPORTS ILLUSTRATED

Who's Who & Who's Whose

by HARRIET MERAS

The culture of the human mind is the finest of all arts . . . and one of the most neglected. Neglected, not because we are uninterested but because we are confused. Confused about the direction we ought to take and confused about the goals we should pursue. And so, with the best will in the world, we busy ourselves perfecting means to realize a confusion.

Dear Confused: . . . have a banana!

WE GO GREEK

Recent actives at the DS house are Wayne Miller, Phil Schneider, Clyde Cleveland, Tom (Huckleberry) Sawyer, and Joe Taylor. John Bodner, John Englert, Ted Mock, George Hickman and Tom Jenni are new Pi Kap actives. The AGR's new actives include Steve Vogt, Donald Keil, and Steve Hagdnagy.

PLEGGED

Carl Senner, Gary Pilgrim, and Lars Lithander pledged DS; Paul Peterson, John Smith, Larry Creekmore, Marvin Adami, Don Franz, Robert Carver and Russ Langan are newly pledged to AGR. Vera Goulet and Janice Thompson pledged Pi Phi; Harold Lindvig, Mickey Watlups, Jerry Trebish pledged SAE.

FUTUREPLANS

Patty Kamhoot, PiPhi, announced her pinning to Gary Heath, Phi Sig.; Bill Johnstone, DS is pinned to Tootsie Toughtshell; Jim Fletcher, DS is pinned to Betti Zuzugg.

I TAKE THESE

Jeanett Wenzel, Chi O, announced her engagement to Stan Rasmussen, SAE; Sharron Beekler, Chi O, announced her engagement to Myron Trang, LXA.

PHI SIGMA K OFFICERS

New officers are Don Martin, president; Dennis Gary, vice president; Edd Kanemasu, secretary; John Holden, inductor; Bob Stone, sentinel.

Mosher Appears On MSC Campus

by Martha Elder

Visiting the Montana State College campus for two days recently was Dr. Arthur Mosher, Executive Director of the Council on Economic and Cultural Affairs.

During his stay Dr. Mosher met with the Advisory Committee for the International Cooperation Center, members and visitors of the seminar on The Nature of the Non-Western World, and staff personnel in the Department of Agricultural Economics.

In meeting with the Advisory Committee, Dr. Mosher described the activities of the Council for Economic and Cultural Affairs, a new organization financed largely by John D. Rockefeller, 3rd, and the Rockefeller Brothers Fund.

The purposes of the Council are charitable, scientific and educational. It is designed to stimulate and support economic and cultural activities important to human welfare.



On Campus with Max Shulman

(Author of "I Was a Teen-age Dwarf" "The Many Loves of Dobie Gillis", etc.)

DECK THE HALLS

When you think of Christmas gifts you naturally think of Marlboro cigarettes, leading seller in flip-top box in all fifty states—and if we annex Wales, in all fifty-one—and if we annex Lapland, in all fifty-two. (This talk about annexing Wales and Lapland is, incidentally, not just idle speculation. Great Britain wants to trade Wales to the United States for a desert. Great Britain needs a desert desperately on account of the tourist trade. Tourists are always coming up to the Prime Minister or the Lord Privy Seal, or the Thane of Glamis, or like that and saying, "I'm not knocking your country, mind you. It's very quaint and picturesque, etc., what with Buckingham Palace and Boyril and Scotland Yard, etc., but where's your desert?")



"...but where's your desert?"

Athletics And Music Concern Senate

by Judy Dieruf

Much of the attention of MSC's Student Senate has recently been focused on aspects musical and athletic.

Randy Barthelme, Commissioner of Musical Affairs, directed an announcement to senate members and all MSC students participating in the forthcoming Christmas sing:

The Christmas Sing will be held December 6 in the old gym. Choral presentations will begin at 7:30 Sunday night, but all participating groups are asked to arrive at 7:00 for preliminary preparations. Local radio station KBMN will broadcast the Christmas arias and carols throughout Bozeman. All groups desiring rehearsals will find the gymnasium open on Sunday from 2-5 p.m. for that purpose.

Keith Strandberg, improvements presently being acted upon include installation of new turnstiles, a piano, and portable stage. The board also announced plans including the possible presentation of the Harlem Globetrotters and the Althea Gibson Tennis shows.

Degradation Denied

In answer to faculty objections to the WUS Faculty Shoeshine as stated in the last issue of the Exponent, Co-Chairman Arjay Godston made the following comment: "We are not trying to see how low the faculty will go or make them feel humble. This was not our purpose at all. We only want to make money for this worldwide university organization."

Request Receives Ratification

The Geology Club's petition for

recognition was unanimously granted by Senate Monday. Open to all interested students and faculty, the club is organized to promote interest, acquaint members with the field, provide extracurricular activities and guest speakers. Dues are \$1 per quarter, \$3 per year. The geology club now awaits passage by the Dean's Council for official recognition.

Supplements Sanctioned

Supplementary budgets were approved in the following divisions: Forensics, Exponent, and a \$37.85 senate expense resulting from the Missoula conference trip.

Petition Pondered

Presently under consideration is the application of Blue Key, a national honor society, for establishment on the MSC campus.

Opposition Overridden

Some controversy developed when the relatively new campus living group, the Wesley House, asked Senate approval to enter the Christmas sing. An initial vote defeated the measure, because, in the words of some, "It is quite a lengthy program as it is."

Spokesman Jim Brookie presented his views, "I feel that we are being discriminated against. They have just as much right to sing as any other recognized living group on campus."

After reconsideration, a recall vote was taken and the measure passed with President Knapton's vote to break a tie.

Novelties Noted

Larry Daw, Commissioner of Dramatics, noted that the Christmas Opera "Amahl and the Night Visitors" to be presented under the joint sponsorship of music and dramatics departments is a new innovation at MSC. He called attention to the production of "A Streetcar Named Desire" to be presented in Missoula, the success of which may determine future MSC dramatic tours.

Appointment Announced

Gene Bourdet has been appointed by President Renne as new member of the Fieldhouse Board. According to spokesman

SULLIVAN PHOTO

- ★ Photostats
- ★ Over-rite Developing
- ★ Everything Photographic

AMC SULLIVAN FOTO

— Under The AMC Sign —

As Usual, for the Unusual See . . .

HAUSEMAN'S, 4 East Main

IMPORTED CHRISTMAS CARDS
from Germany, Norway, Sweden, Denmark and Spain

GLASS — made in the U.S.A.

IMPORTED GIFTS from Germany, Italy, Sweden,
Norway, Denmark and Mexico.

Our Balcony Is Full of Gorgeous Christmas Decorations
Norcross Gift Wrappings and Cards, all at . . .

HAUSEMAN'S, 4 East Main

Before I forget, let me point out that Scotland Yard, Britain's plain-clothes police branch, was named after Wally Scotland and Fred Yard who invented plain clothes. The American plain-clothes force is called the F.B.I. after Frank B. Inchecliff, who invented fingerprints. Before Mr. Inchecliff's invention, everybody's fingers were absolutely glassy smooth. This, as you may imagine, played hob with the identification of newborn babies in hospitals. From 1791 until 1904 no American parent ever brought home the right baby from the hospital. This later became known as the Black Tom Explosion.

(But I digress. England, I was saying, wants to trade Wales for a desert. Sweden wants to trade Lapland for Frank B. Inchecliff. The reason is that Swedes to this day still don't have fingerprints. As a result, identification of babies in Swedish hospitals is so haphazard that Swedes flatly refuse to bring their babies home. There are, at present, nearly a half-billion unclaimed babies in Swedish hospitals—some of them well over eighty years old.)

But I digress. Marlboro is, of course, an ideal Christmas gift for your friends and loved ones who enjoy filter cigarettes. As for the other hand, your friends and loved ones like mildness but don't like filters, then you can't go wrong with a carton of Philip Morris. If your friends and loved ones like a subtle mentholated cigarette that combines refreshing taste with high filtration, then buy a carton of Alpines. (Alpines, incidentally, are named after the late Albert G. Pine. Al Pine worked all his life to invent a cigarette that would combine light menthol and high filtration, but alas he never succeeded. As by-products of his research he did manage to invent the atom, the gooseneck lamp and the cocker spaniel, but the lightly mentholated high filtration cigarette, alas, never. Now this dream is realized and what could be more fitting than to pay tribute to this brilliant man by calling this cigarette Alpine?)

We, the makers of Marlboro, Philip Morris and Alpine are now enjoying our sixth year with Max Shulman. Obviously we think he is a funny fellow. We think you'll think so too if you look at his television series "THE MANY LOVES OF DOBIE GILLIS"—and read his latest book, "I WANT TO BE A TEEN-AGE DWARF."

Patronize Exponent Advertisers