

WELCOME



to the

1946
9

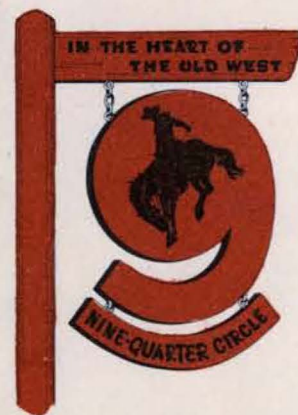


NINE QUARTER - CIRCLE RANCH

*A gem in Taylor Peaks, Gal-
latin Canyon. Inset below
shows beautiful Taylor
Creek Falls.*



OUT MONTANA WAY,
in the shadow of the Rock-
ies, where the spirit of the old West still
lives, there's a rushing, untamed river
called the Gallatin. Born in the rock
craggs near Yellowstone National Park,
one of its offsprings is Taylors Fork.
Beside this foaming stream lies the
Nine Quarter-Circle Ranch, nestled
among Lodgepole Pine, Douglas Fir,
and Englemann Spruce — an un-
spoiled, primitive wilderness where
mountains instead of buildings
form the skyline, and the sounds
of nature replace the roar of
traffic.



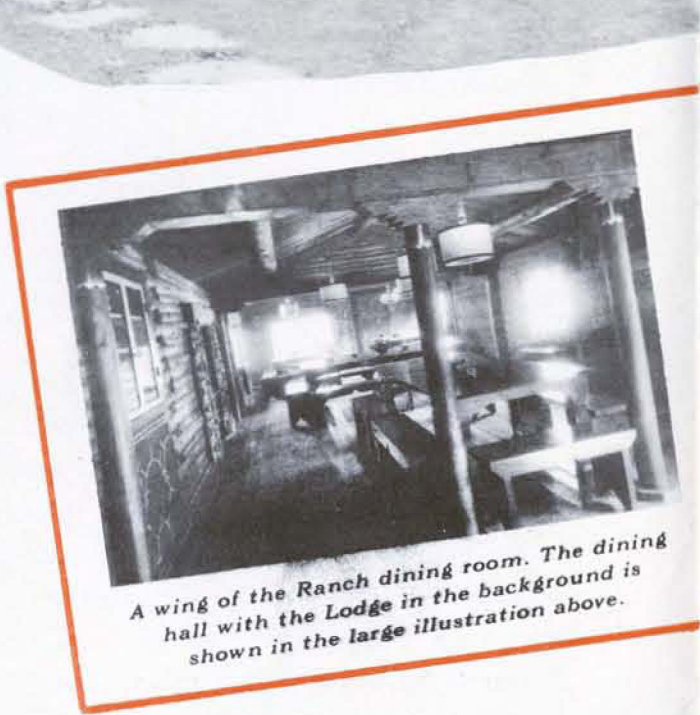
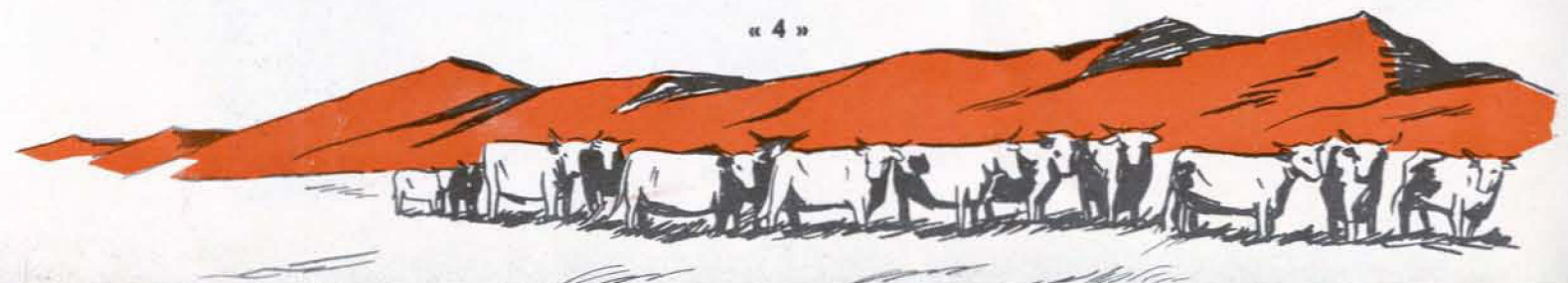


THE NINE QUARTER-CIRCLE, formerly known as the Rising Sun, has been a ranch for almost fifty years. Horses and cattle have dotted its skyline; its air has been cut with the whip of ropes; and its long corrals have enclosed the whirls of hoof dust these many lusty years. The Indians once ran elk herds here and slaughtered with short bows for the tribe. Here, too, Jim Bridger rode after Buffalo and just over the ridge—an easy day's ride from the ranch—someone made a gold strike in Alder Gulch, and Virginia City came into being.

The stage coach lurches no more over the once rocky trails; the hunter is gone with his long bowie, but Nature's wildness still remains.

HERE IS THE SETTING for a perfect vacation with all the comforts of your own home. The guest cabins are of log, built in true Montana style with gable-end porch. Interiors are spotless and equipped for real living. Rustic single and double beds have inner-spring mattresses and the finest wool blankets. Wardrobe closets, tables, and chairs are simple but practical. There's plenty of fragrant pine to burn in your cabin stove during the cool evenings. And, nearby are two large bath houses with showers, tubs, an ample supply of hot and cold running water, and soft, clean towels.

« 4 »



A wing of the Ranch dining room. The dining hall with the Lodge in the background is shown in the large illustration above.

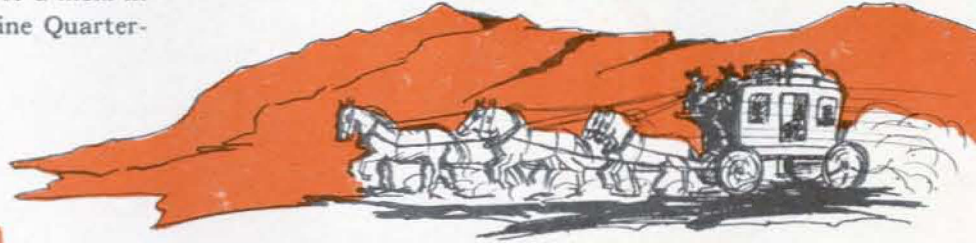


Eight of the 32 Ranch buildings. At right is one of the massive, 100-ton stone fireplaces in the lounge room of the Lodge.

YOUR FOOD at the Nine Quarter-Circle will be long remembered. It's "tops" in quality and prepared in an immaculate, modern kitchen. There's always plenty of fresh vegetables, eggs, and milk. In season, you'll find wild fowl, venison, elk or mountain trout on the table. Other meals will feature delicious chicken, pork, or beef.

Appetites that have hibernated for years suddenly acquire new life in this invigorating climate. There's a real treat in store for you, coming in from a day out of doors to a meal in the cheerful dining room at the Nine Quarter-Circle.

SOCIAL LIFE centers around the Lodge, a great hall—fifty-two by sixty feet—topping an adjacent slope. Inside, the floors are of polished hardwood. A log partition with an open arch divides the lodge into two big rooms. Each has its own huge fireplace made of a hundred tons of chosen native stone. Both may be used for dancing but one is fitted as the lounge with comfortable furniture. Here, you can play cards, swap fish stories with other guests, or just relax.



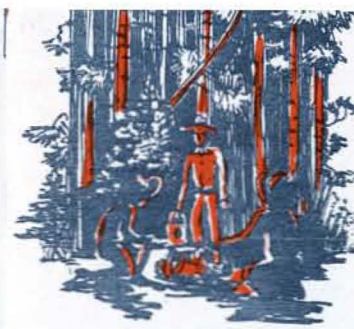
« 5 »

Fishing in this part of Nature's Wonderland is a never-to-be-forgotten thrill. Scene is up Taylors Fork, the Ranch river.



TROUT FISHING is a never-to-be-forgotten experience for guests at the Nine Quarter-Circle. In the Alpine lakes and the clear, cold streams, may be found wily rainbow, cut-throat, locklaven, mackinaw, eastern brook, and the gamey Montana grayling. Cradled in the high cirques among the

peaks are crystal-clear, well-stocked lakes that offer an eternal welcome to none but the hardiest and are available only to those who travel in the saddle. Or, you can take your rod and stroll to nearby Taylors Fork and hook onto some fine fellows. Whichever you prefer, you'll find fishing at its best in countless spots close by.



TRAIL RIDING on a Western horse in a Western saddle is a daily pleasure. If you haven't ridden and would like to learn, here is the place to start. Guests are free to take their horses and

ride where they please at any time. Well-marked trails lead to many places of interest near the Ranch. Or, you can join in on a "saddle trip". With an experienced guide in charge, these trips—never over a day in length—take you to the Sunken Forest . . . the beaver dams up Wappity Creek . . . beautiful Taylor Falls . . . the Sugar Bowl filled with colored sand . . . Meadow Creek Lakes, and many other nooks and corners in this part of Nature's Wonderland.

PACK TRIPS — For those who seek sanctuary in the more primitive spots, there's nothing to equal a "pack trip". Unlike "sad-

dle trips", they take from two days to a week and there's an extra charge for pack horses and a guide. Most of these trips may be taken by the whole family. They begin in the valley of the Ranch and continue upward through virgin forests to mountains seldom trod by man. You'll ride ridges above the timber line and gaze at Nature's grandeur. There's Specimen Ridge with its prehistoric Petrified Forest where lie the remains of ancient trees that were buried ages ago in hot volcanic ash. There's Burnt Fork Basin, game country extraordinary—a beautiful trip over high ridges where Yellowstone National Park can be seen only a few miles away. There are the Spanish Creek Lakes where a pine breeze drenched with glacial snow welcomes you.



Ranch guests returning from the trail at the day's end. Inset above shows a "pack trip" above the timber line.



The bear hunter gets his "rug" in this sportsman's paradise.

The Roundup for the day's ride is a typical scene on Western ranches. Scene on opposite page shows Bronc Busting in the Nine Quarter-Circle Corral.



WILDLIFE is varied and plentiful at the Nine Quarter-Circle. The Ranch abounds with elk, deer, and moose. Mountain sheep, black and brown bear, coyotes, lynx, bobcats, and occasional timber wolves can also be seen by the alert sportsman. In addition to the many resident game animals, great numbers of others migrate from the snow-covered ranges of Yellowstone National Park to lower levels in search of food when the Fall snows come. This makes the Nine Quarter-Circle Ranch a particularly attractive hunting favorite. There's an open game season on bear in the Spring and Fall. The season on elk, deer, and moose is open to both residents and non-residents in the Fall. If you're an enthusiast, plan to come here on a hunting trip. You'll find wild game aplenty. Incidentally, there are no snakes.

AMATEUR RODEOS are another feature of the Nine Quarter-Circle, and there's hilarious fun for everyone whenever they're held in the large, well-built corrals. Across from the lower

cabins, there's a polo field and a bit farther, equipment for trap and target shooting. A quarter of a mile away lies the river where you can hunt a swimming or fishing hole to suit your taste. You'll never lack for something to do at the Ranch.

THE CLIMATE, too, is invigorating at this 7000-foot altitude, especially to those accustomed to lower elevations. The summers out here are delightful. Temperatures range well up into the eighties during the day but the nights are always cool. Except for very unusual years, September and October also have a high percentage of beautiful weather with many warm, sunny days—this is our Indian Summer. Precipitation during the winter months is heavy. Snow comes in early November and remains until April. Some of the higher peaks may remain snow-capped the year 'round, while the lower ranges are covered with snow until the cool of the Spring gives way to the northward advance of the warming sun.

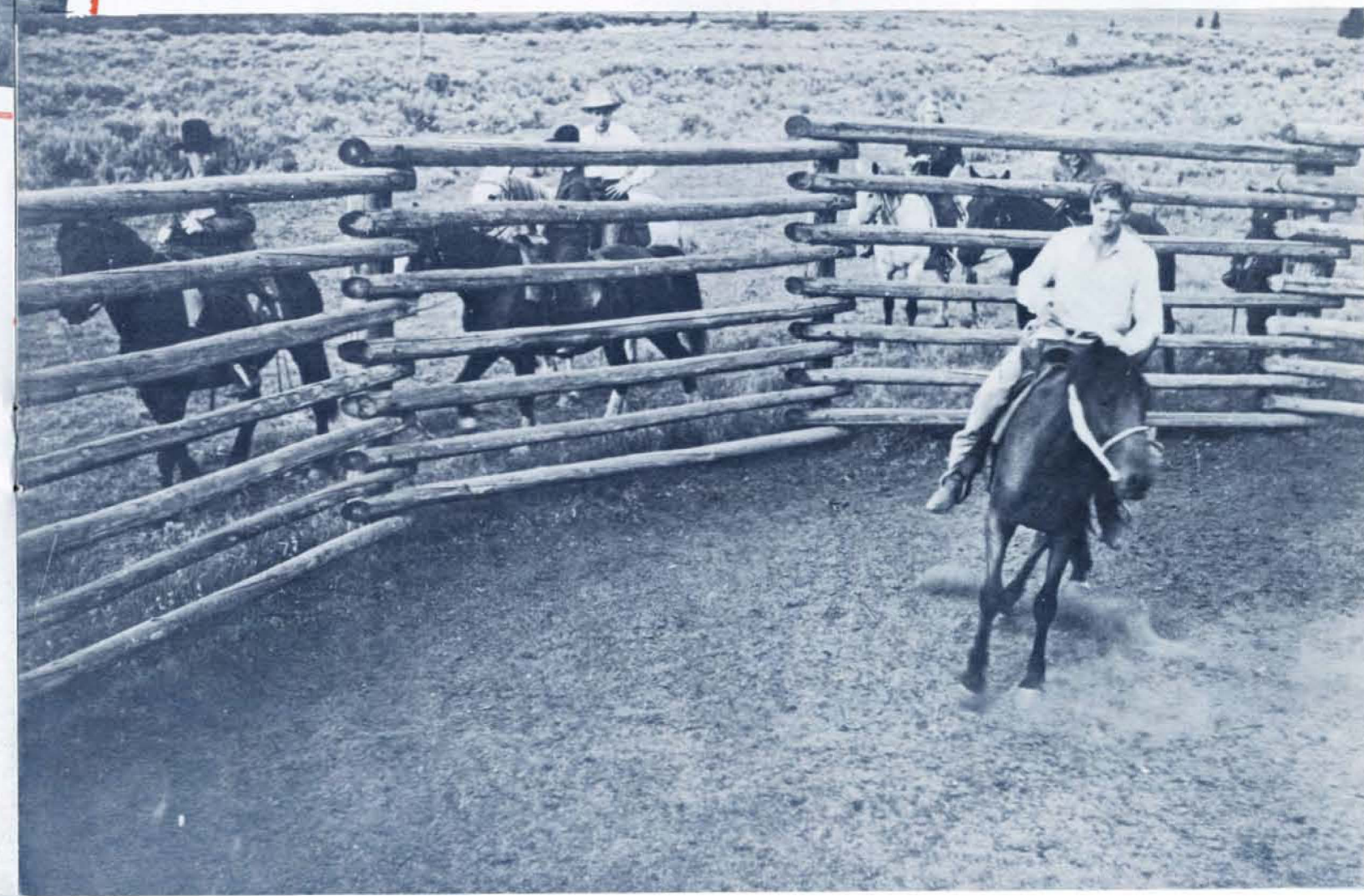
THE RANCH HANDS responsible for your welfare and comfort are true Westerners in every sense of the word. This country has been their home for many years. Each wrangler at the Nine Quarter-Circle is an expert rider, a woodsman, and a real craftsman at repairing anything from a lame horse to a sawmill. Your good time is the major concern of everyone at the Nine Quarter-Circle and you will be shown this country by those who are born to it.

A REGISTERED, TRAINED NURSE is available at all times during the guest season.

TELEPHONE SERVICE connects the Nine Quarter-Circle Ranch to the outside world.

WHAT TO BRING. For all-around mountain wear, loose-fitting clothes of wool or part wool are most suitable. Many guests—both men and women—favor blue denim, waist-high overalls, a wide-brimmed hat, and a pair

of stout, comfortable shoes or boots. Riding breeches are fine, too. A couple of sweaters and a windbreaker should also be in your wardrobe. Buckskin gloves and a bandanna are advisable. For evenings, sports clothes or ordinary traveling clothes will do nicely. If you're a trout fisherman, bring your own outfit by all means. If you're not, we recommend waiting until you get out here before purchasing the necessary equipment. Firearms are permissible but can be used on game animals only in season. The Western stores and the Trading Post at the Ranch will be able to take care of you on all your special clothing and fishing tackle needs.



This year, plan to make your vacation a Western vacation—at the Nine Quarter-Circle. Here is a Ranch with a personality all of its own. Here is rest and peace of the mountains. Here is health, happiness, and a better understanding of man and Nature at the end of a long trail. Let Howard and Jack prove to you that here is the “Good Medicine” of the Indians.



HOWARD KELSEY

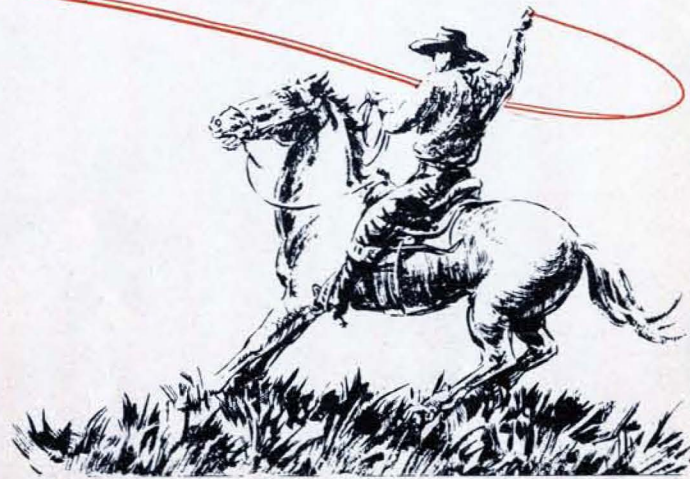
TAKE A WESTERN
VACATION

THIS YEAR

at the
NINE QUARTER-CIRCLE 9 RANCH



JACK RIDDELL



HOW TO GET THERE . . .

NINE QUARTER-CIRCLE RANCH



by car . . . No. 10 highway through Montana to Bozeman; Highway No. 191 from Bozeman towards West Yellowstone—60 miles, turn right on Taylor's Fork—five miles to Ranch. From the South—to West Yellowstone, either through Yellowstone Park or Idaho Falls, Idaho—then Highway 191, 33 miles towards Bozeman—turn left on Taylor's Fork—five miles to Ranch.

by train . . . Northern Pacific to Bozeman; Milwaukee R. R. to Gallatin Gateway; or Union Pacific to West Yellowstone.

by plane . . . Northwest Airlines to Billings or Butte, then by train to Bozeman. (Service to Bozeman is contemplated and may be in effect by summer.)

Our Station Wagon will pick you up at Bozeman, Gallatin Gateway, or West Yellowstone, upon request.

