

#### ADJACENT TO . . .

- Yellowstone National Park
- Glacier National Park
- Billings — Northwest Airlines
- Butte (richest hill on earth)
- Helena (Capital of Montana)
- Virginia City (gold dredging)
- Great Falls (home of Charlie Russell, famous painter of Western life)
- Morrison Cave
- Ouzel Falls
- Golden Trout Lakes
- Hebgen Lake



*In the Land of Shining Mountains  
Cabins at Karst's on banks of Gallatin River*

### PINES AT THE WINDOW

BY DANIEL SMYTHE

*There are pines outside my window, large pines  
Moving in music. With the night of rain and high wind,  
I can lie in the darkness and hear the drops stepping  
down  
From branch to branch. I can hear the strings of the  
branches  
Speaking to me a song with lines brought from the  
weaving sky.  
They whisper to me of sleep, and the wind's fingers  
stroking the limbs,  
Of depths beyond my ken, of a world of shadow,  
And the valleys filled with softness and sometimes  
Shining with a light from a cloud-feathered sky.  
The arms of the pines come down: they touch the house  
And murmur of a million leaves that lull on the limbs,  
And the lifting rush of the wind's lips touching them  
Over and over to the song of sleep,  
Over and over to the whisper of good, strong covers.*



*KARST'S RANCH  
in the cool of Gallatin Canyon  
U. S. Highway 191*

IN THE HEART OF MONTANA'S  
RUGGED ROCKIES

# KARST'S RANCH

Situated in Gallatin Canyon, Montana, on  
U. S. Highway 191  
the cool entrance to Yellowstone National  
Park

## THE FINEST ALL EXPENSE RANCH VACATION Seven Full Days for \$35.00 includes

Auto transportation to ranch from  
Bozeman, Gallatin Gateway or West Yellow-  
stone, Montana, and return.

Log cabin (modern) and delicious meals

Freedom of superb mountain trails for hiking  
or saddle horse trips, trout fishing in the  
Gallatin River and innumerable mountain  
lakes, entertainment evenings in Karst's  
western dance hall.

For further information address  
**KARST'S RANCH**  
Bozeman, Montana  
or  
Gallatin Gateway, Montana

#### RATES PER DAY

(These rates do not include transportation)

Lodging, single, without bath . . . . .	\$1.25
Lodging, double, without bath . . . . .	\$2.00
Lodging, single, modern with bath . . . . .	\$2.00
Lodging, double, modern with bath . . . . .	\$4.00

Dining Room and Coffee Shop Service  
at reasonable rates.

#### RATES FOR SADDLE HORSES

Short trips, with guide . . . . .	\$1.00
One-half day trips, with guide . . . . .	\$3.50
Full day trips, with guide . . . . .	\$5.00
Per week, with guide . . . . .	\$15.00

Arrangements made for pack trips





**\$35.00 Per Week All Expense Vacation--WHAT YOU GET in the *Famous Gallatin Canyon***

At Karst's Ranch (in continuous operation for forty years) is to be found the perfect vacation spot. Located in the heart of famous Gallatin Canyon, the ranch is built directly on the banks of the turbulent Gallatin River. The river, combined with billions of pine trees covering the mountain slopes, makes forever-cool days and nights at Karst's.

This historic and picturesque ranch is located directly on U. S. Highway 191, 35 miles south of Bozeman, Montana, and 56 miles north of West Yellowstone, the famous entrance to Yellowstone National Park.

Karst's Stage operates daily between Bozeman and West Yellowstone and meets guests arriving at Bozeman via the Northern Pacific Railway or Greyhound Bus; at Gallatin Gateway via the C. M. St. P. and P. R. R. and at West Yellowstone via the Union Pacific Railroad and Bus Lines.

Guests are made comfortable in cabins built of native logs and consisting of living room, from one to four bedrooms, bath or shower. Many cabins are equipped for housekeeping. All are electrically lighted. The dining room and coffee shop provide continuous service.

At the corral awaiting guests, a string of western saddle horses together with able wranglers, are ready for an hour's trip, for a half day, day or pack trips of a week or more. All equipment, tepees, sleeping bags, air mattresses, food, cook

and guide are furnished at reasonable rates. The trails are endless and beautiful, along rushing mountain streams, the giant trees shading the way to innumerable mountain lakes filled with fish. Wild life abounds and deer, elk, moose, and mountain sheep provide unexpected thrills.

In the Gallatin River, directly back of the ranch cabins, Rainbow Trout, Eastern Brook, Grayling and Mountain Whitefish await the amateur or accomplished fisherman, and a few hours in the saddle takes one to the famous Golden Trout Lakes, one of the two spots in the world where these elusive and rare beauties are to be caught. At the ranch store is to be had a wide variety of fishing equipment, also guide, if desired.

Lovers of wild flowers find beauty of color and variety throughout the entire summer season, a constant shifting of bloom such as is to be found in the mountains and here and there stretches of sage brush, a symbol of the West.

Evenings there are gay parties in the large western dance hall, bonfires under brilliant starlit skies. Complete relaxation in air filled with perfume of pine and spruce. Riding, hiking, fishing, dancing, mingling with congenial people from points far and near, the finest of food in the dining room, comfortable beds in cozy log cabins, all make a never-to-be-forgotten vacation at Karst's.



**The Freedom  
and Thrill  
of the West**



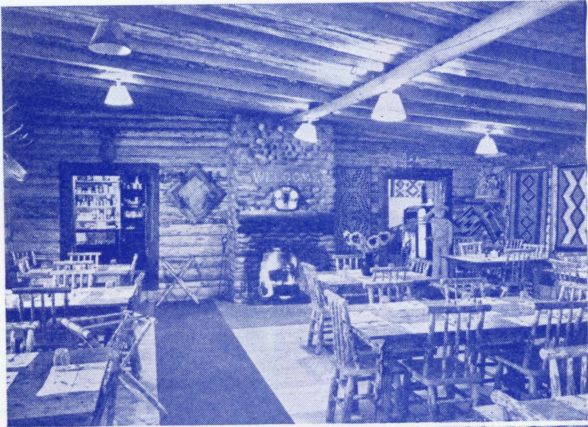
**Montana's Largest  
All Year  
Mountain Resort**



**KARST'S  
RANCH**



# SCENES AND ACTIVITIES



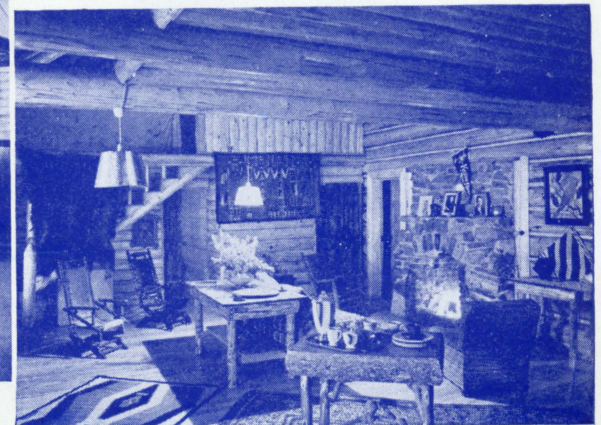
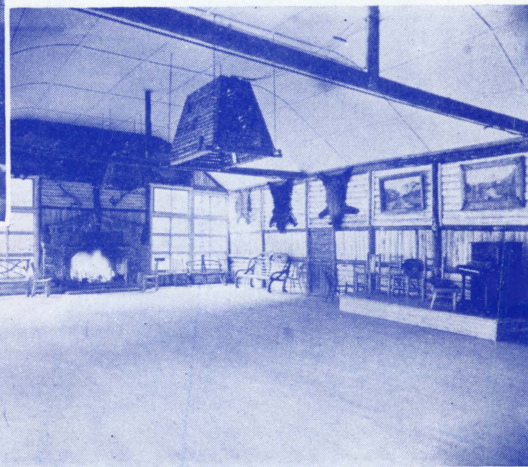
Yellowstone and Glacier National Parks open to motorists May 1 to October 15 inclusive.

**HUNTING:** From October 15 until December 1, Karst's is the ideal headquarters. Elk, deer and bear are available and every possible comfort is afforded hunters.

**WINTER SPORTS:** Nowhere in Montana is there a more perfect setting for winter sports than at Karst's. The canyon, snowclad; mountain slopes; the Galatin River running free, all make a gorgeous picture. The ski hill has two escalators, and the hill is electrically lighted, permitting skiing until early morning hours, and fireplaces and good food count for a lot after skiing.



*Railway Business Women's Convention*



## KARST'S

The Ideal Pleasure and Convention Resort in Montana located adjacent to the largest cattle and sheep ranches in the West.